

Form 3160-3
(February 2005)RECEIVED
SEP 16 2010
HOBBSDO

OCD-HOBBS

UNITED STATES
DEPARTMENT OF THE INTERIOR
BUREAU OF LAND MANAGEMENT
APPLICATION FOR PERMIT TO DRILL OR REENTER

Split Estate

FORM APPROVED
OMB NO 1004-0137
Expires March 31, 2007

1a Type of Work: <input type="checkbox"/> DRILL <input checked="" type="checkbox"/> REENTER		5. Lease Serial No. NM-105564
1b Type of Well: <input checked="" type="checkbox"/> Oil Well <input type="checkbox"/> Gas Well <input type="checkbox"/> Other <input checked="" type="checkbox"/> Single Zone <input type="checkbox"/> Multiple Zone		6. If Indian, Allottee or Tribe Name N/A
2 Name of Operator Yates Petroleum Corporation 025575		7. If Unit or CA Agreement, Name and No. N/A
3a. Address 105 South Fourth Street, Artesia, NM 88210		8. Lease Name and Well No. 38314 Herkimer BQF Federal #1H
3b Phone No. (include area code) 505-748-1471		9. API Well No. 30-025-20381
4 Location of well (Report location clearly and in accordance with any State requirements *) At surface 1980' FSL & 1980' FWL, NESW Unit K At proposed prod zone 330' FNL & 330' FWL, NWNW Unit D		10. Field and Pool, or Exploratory West Jal Delaware 33807
14 Distance in miles and direction from the nearest town or post office* Approximately 5 miles west of Jal, New Mexico		11. Sec, T, R, M, or Blk And Survey or Area Section 21-T25S-R36E
15 Distance from proposed* location to nearest property or lease line, ft (Also to nearest drlg unit line, if any) 330'	16 No. of acres in lease 640.00	12 County or Parish Lea
17 Spacing Unit dedicated to this well 160 NESW; S2NW4; NWNW	13. State NM	
18. Distance from proposed location* to nearest well, drilling, completed, applied for, on this lease, ft.	19. Proposed Depth TYD 7550&MD 10742	20 BLM/ BIA Bond No. on file NATIONWIDE BOND #NMB000434
21 Elevations (Show whether DF, KDB, RT, GL, etc) 3095 DF	22 Approximate date work will start* August 26, 2010	23 Estimated duration 60 days

24 Attachments

The following, completed in accordance with the requirements of Onshore Oil and Gas Order No 1 shall be attached to this form:

- | | |
|--|--|
| 1. Well plat certified by a registered surveyor | 4. Bond to cover the operations unless covered by existing bond on file (see item 20 above). |
| 2. A Drilling Plan. | 5. Operator certification. |
| 3. A Surface Use Plan (if the location is on National Forest System Lands, the SUPO must be filed with the appropriate Forest Service Office). | 6. Such other site specific information and/ or plans as may be required by the BLM |

25. Signature 	Name (Printed/ Typed) Cy Cowan	Date 7/21/2010
Title Land Regulatory Agent		
Approved By (Signature) /s/ Don Peterson	Name (Printed/ Typed) /s/ Don Peterson	Date SEP 14 2010
Title FIELD MANAGER	Office CARLSBAD FIELD OFFICE	

Application approval does not warrant or certify that the applicant holds legal or equitable title to those rights in the subject lease which would entitle the applicant to cc operations thereon

Conditions of approval, if any, are attached.

APPROVAL FOR TWO YEARS

Title 18 U.S.C. Section 1001 and Title 43 U.S.C. Section 1212, make it a crime for any person knowingly and wilfully to make to any department or agency of the United States any false, fictitious or fraudulent statements or representations as to any matter within its jurisdiction.

* (Instructions on page 2)

SEE ATTACHED FOR
CONDITIONS OF APPROVAL

Capitan Controlled Water Basin

Kz 9/21/10

Approval Subject to General Requirements
& Special Stipulations Attached

District I

1625 N. French Dr., Hobbs, NM 88240

District II

1301 W. Grand Avenue, Artesia, NM 88210

District III

1000 Rio Brazos Rd., Aztec, NM 87410

District IV

1220 S. St. Francis Dr., Santa Fe, NM 87505

State of New Mexico

Energy, Minerals & Natural Resources Department

OIL CONSERVATION DIVISION

1220 South St. Francis Dr.

Santa Fe, NM 87505

Form C-

Revised October 12, 20

Submit to Appropriate District Of

State Lease - 4 Co

Fee Lease - 3 Co

☐ AMENDED REPO

WELL LOCATION AND ACREAGE DEDICATION PLAT

¹ API Number 30-025-20381	² Pool Code 33800	³ Pool Name West Jal Delaware
⁴ Property Code 38314	⁵ Property Name Herkimer BQF Federal	⁶ Well Number 1H
⁷ OGRID No. 025575	⁸ Operator Name Yates Petroleum Corporation	⁹ Elevation 3095 DF

¹⁰ Surface Location

UL or lot no	Section	Township	Range	Lot Idn	Feet from the	North/South line	Feet from the	East/West line	County
K	21	25S	36E		1980	South	1980	West	Lea

¹¹ Bottom Hole Location If Different From Surface

UL or lot no.	Section	Township	Range	Lot Idn	Feet from the	North/South line	Feet from the	East/West line	County
D	21	25S	36E		330	North	330	West	Lea

¹² Dedicated Acres 160	¹³ Joint or Infill	¹⁴ Consolidation Code	¹⁵ Order No.
--------------------------------------	-------------------------------	----------------------------------	-------------------------

No allowable will be assigned to this completion until all interests have been consolidated or a non-standard unit has been approved by the division.

	¹⁷ OPERATOR CERTIFICATION I hereby certify that the information contained herein is true and complete to best of my knowledge and belief, and that this organization either owns a working interest or unleased mineral interest in the land including the proposed bottom hole location or has a right to drill this well at this location pursuant to contract with an owner of such a mineral or working interest, or to a voluntary pooling agreement or a compulsory pooling order heretofore entered by the division. Signature: <u>Cy Cowan</u> Date: <u>7/21/10</u> Printed Name: <u>Cy Cowan</u>
	¹⁸ SURVEYOR CERTIFICATION I hereby certify that the well location shown on this plat was plotted from field notes of actual surveys made by me or under my supervision, and that the same is true and correct to the best of my belief. REFER TO ORIGINAL PLAT Date of Survey Signature and Seal of Professional Surveyor Certificate Number

NEW MEXICO OIL CONSERVATION COMMISSION

WELL LOCATION AND ACREAGE DEDICATION PLAT

FORM C-128
Revised 5/1/57

SEE INSTRUCTIONS FOR COMPLETING THIS FORM ON THE REVERSE SIDE

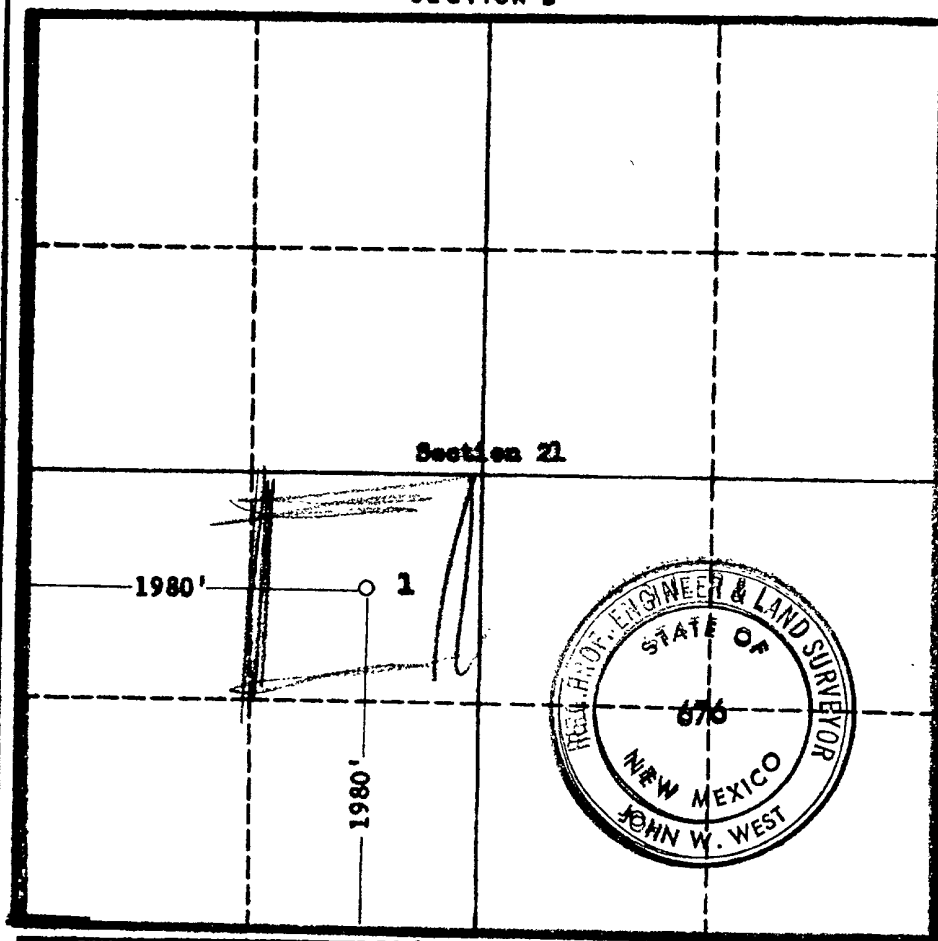
SECTION A

Operator SKELLY OIL COMPANY			Lease WEST JAL. 21 "A"		Well No. 2 1
Unit Letter K	Section 21	Township 25 SOUTH	Range 36 EAST	County LEA	
Actual Footage Location of Well: 1980 feet from the SOUTH line and 1980 feet from the WEST line					
Ground Level Elev.	Producing Formation Strawn		Pool West Jal - Strawn Gas Pool		Dedicated Acreage [Signature]

1. Is the Operator the only owner in the dedicated acreage outlined on the plat below? YES ☒ NO ☐ . (If "no," state the person who has the right to drill into and to produce from any pool and to appropriate the production either for himself or for himself and another. (65-3-29 (e) NMSA 1935 Comp.)
2. If the answer to question one is "no," have the interests of all the owners been consolidated by communitization agreement or otherwise? YES ☐ NO ☐ . If answer is "yes," Type of Consolidation _____
3. If the answer to question two is "no," list all the owners and their respective interests below:

Owner	Land Description

SECTION B



CERTIFICATION

I hereby certify that the information in SECTION A above is true and complete to the best of my knowledge and belief.

[Signature]
Name

Dist. Supt.

Position

Skelly Oil Company

Company

April 16, 1963

Date

I hereby certify that the well location shown on the plat in SECTION B was plotted from field notes of actual surveys made by me or under my supervision, and that the same is true and correct to the best of my knowledge and belief.

Date Surveyed

4-2-63

Registered Professional Engineer and/or Land Surveyor, **JOHN W. WEST**

[Signature]

Certificate No.

N.M. - P.E. & L.S. NO. 676

0 350 650 950 1250 1550 1850 2150 2450 2750 3050 3350 3650 3950 4250 4550 4850 5150 5450 5750 6050 6350 6650 6950 7250 7550 7850 8150 8450 8750 9050 9350 9650 9950 10250 10550 10850 11150 11450 11750 12050 12350 12650 12950 13250 13550 13850 14150 14450 14750 15050 15350 15650 15950 16250 16550 16850 17150 17450 17750 18050 18350 18650 18950 19250 19550 19850 20150 20450 20750 21050 21350 21650 21950 22250 22550 22850 23150 23450 23750 24050 24350 24650 24950 25250 25550 25850 26150 26450 26750 27050 27350 27650 27950 28250 28550 28850 29150 29450 29750 30050 30350 30650 30950 31250 31550 31850 32150 32450 32750 33050 33350 33650 33950 34250 34550 34850 35150 35450 35750 36050 36350 36650 36950 37250 37550 37850 38150 38450 38750 39050 39350 39650 39950 40250 40550 40850 41150 41450 41750 42050 42350 42650 42950 43250 43550 43850 44150 44450 44750 45050 45350 45650 45950 46250 46550 46850 47150 47450 47750 48050 48350 48650 48950 49250 49550 49850 50150 50450 50750 51050 51350 51650 51950 52250 52550 52850 53150 53450 53750 54050 54350 54650 54950 55250 55550 55850 56150 56450 56750 57050 57350 57650 57950 58250 58550 58850 59150 59450 59750 60050 60350 60650 60950 61250 61550 61850 62150 62450 62750 63050 63350 63650 63950 64250 64550 64850 65150 65450 65750 66050 66350 66650 66950 67250 67550 67850 68150 68450 68750 69050 69350 69650 69950 70250 70550 70850 71150 71450 71750 72050 72350 72650 72950 73250 73550 73850 74150 74450 74750 75050 75350 75650 75950 76250 76550 76850 77150 77450 77750 78050 78350 78650 78950 79250 79550 79850 80150 80450 80750 81050 81350 81650 81950 82250 82550 82850 83150 83450 83750 84050 84350 84650 84950 85250 85550 85850 86150 86450 86750 87050 87350 87650 87950 88250 88550 88850 89150 89450 89750 90050 90350 90650 90950 91250 91550 91850 92150 92450 92750 93050 93350 93650 93950 94250 94550 94850 95150 95450 95750 96050 96350 96650 96950 97250 97550 97850 98150 98450 98750 99050 99350 99650 99950 100250 100550 100850 101150 101450 101750 102050 102350 102650 102950 103250 103550 103850 104150 104450 104750 105050 105350 105650 105950 106250 106550 106850 107150 107450 107750 108050 108350 108650 108950 109250 109550 109850 110150 110450 110750 111050 111350 111650 111950 112250 112550 112850 113150 113450 113750 114050 114350 114650 114950 115250 115550 115850 116150 116450 116750 117050 117350 117650 117950 118250 118550 118850 119150 119450 119750 120050 120350 120650 120950 121250 121550 121850 122150 122450 122750 123050 123350 123650 123950 124250 124550 124850 125150 125450 125750 126050 126350 126650 126950 127250 127550 127850 128150 128450 128750 129050 129350 129650 129950 130250 130550 130850 131150 131450 131750 132050 132350 132650 132950 133250 133550 133850 134150 134450 134750 135050 135350 135650 135950 136250 136550 136850 137150 137450 137750 138050 138350 138650 138950 139250 139550 139850 140150 140450 140750 141050 141350 141650 141950 142250 142550 142850 143150 143450 143750 144050 144350 144650 144950 145250 145550 145850 146150 146450 146750 147050 147350 147650 147950 148250 148550 148850 149150 149450 149750 150050 150350 150650 150950 151250 151550 151850 152150 152450 152750 153050 153350 153650 153950 154250 154550 154850 155150 155450 155750 156050 156350 156650 156950 157250 157550 157850 158150 158450 158750 159050 159350 159650 159950 160250 160550 160850 161150 161450 161750 162050 162350 162650 162950 163250 163550 163850 164150 164450 164750 165050 165350 165650 165950 166250 166550 166850 167150 167450 167750 168050 168350 168650 168950 169250 169550 169850 170150 170450 170750 171050 171350 171650 171950 172250 172550 172850 173150 173450 173750 174050 174350 174650 174950 175250 175550 175850 176150 176450 176750 177050 177350 177650 177950 178250 178550 178850 179150 179450 179750 180050 180350 180650 180950 181250 181550 181850 182150 182450 182750 183050 183350 183650 183950 184250 184550 184850 185150 185450 185750 186050 186350 186650 186950 187250 187550 187850 188150 188450 188750 189050 189350 189650 189950 190250 190550 190850 191150 191450 191750 192050 192350 192650 192950 193250 193550 193850 194150 194450 194750 195050 195350 195650 195950 196250 196550 196850 197150 197450 197750 198050 198350 198650 198950 199250 199550 199850 200150 200450 200750 201050 201350 201650 201950 202250 202550 202850 203150 203450 203750 204050 204350 204650 204950 205250 205550 205850 206150 206450 206750 207050 207350 207650 207950 208250 208550 208850 209150 209450 209750 210050 210350 210650 210950 211250 211550 211850 212150 212450 212750 213050 213350 213650 213950 214250 214550 214850 215150 215450 215750 216050 216350 216650 216950 217250 217550 217850 218150 218450 218750 219050 219350 219650 219950 220250 220550 220850 221150 221450 221750 222050 222350 222650 222950 223250 223550 223850 224150 224450 224750 225050 225350 225650 225950 226250 226550 226850 227150 227450 227750 228050 228350 228650 228950 229250 229550 229850 230150 230450 230750 231050 231350 231650 231950 232250 232550 232850 233150 233450 233750 234050 234350 234650 234950 235250 235550 235850 236150 236450 236750 237050 237350 237650 237950 238250 238550 238850 239150 239450 239750 240050 240350 240650 240950 241250 241550 241850 242150 242450 242750 243050 243350 243650 243950 244250 244550 244850 245150 245450 245750 246050 246350 246650 246950 247250 247550 247850 248150 248450 248750 249050 249350 249650 249950 250250 250550 250850 251150 251450 251750 252050 252350 252650 252950 253250 253550 253850 254150 254450 254750 255050 255350 255650 255950 256250 256550 256850 257150 257450 257750 258050 258350 258650 258950 259250 259550 259850 260150 260450 260750 261050 261350 261650 261950 262250 262550 262850 263150 263450 263750 264050 264350 264650 264950 265250 265550 265850 266150 266450 266750 267050 267350 267650 267950 268250 268550 268850 269150 269450 269750 270050 270350 270650 270950 271250 271550 271850 272150 272450 272750 273050 273350 273650 273950 274250 274550 274850 275150 275450 275750 276050 276350 276650 276950 277250 277550 277850 278150 278450 278750 279050 279350 279650 279950 280250 280550 280850 281150 281450 281750 282050 282350 282650 282950 283250 283550 283850 284150 284450 284750 285050 285350 285650 285950 286250 286550 286850 287150 287450 287750 288050 288350 288650 288950 289250 289550 289850 290150 290450 290750 291050 291350 291650 291950 292250 292550 292850 293150 293450 293750 294050 294350 294650 294950 295250 295550 295850 296150 296450 296750 297050 297350 297650 297950 298250 298550 298850 299150 299450 299750 300050 300350 300650 300950 301250 301550 301850 302150 302450 302750 303050 303350 303650 303950 304250 304550 304850 305150 305450 305750 306050 306350 306650 306950 307250 307550 307850 308150 308450 308750 309050 309350 309650 309950 310250 310550 310850 311150 311450 311750 312050 312350 312650 312950 313250 313550 313850 314150 314450 314750 315050 315350 315650 315950 316250 316550 316850 317150 317450 317750 318050 318350 318650 318950 319250 319550 319850 320150 320450 320750 321050 321350 321650 321950 322250 322550 322850 323150 323450 323750 324050 324350 324650 324950 325250 325550 325850 326150 326450 326750 327050 327350 327650 327950 328250 328550 328850 329150 329450 329750 330050 330350 330650 330950 331250 331550 331850 332150 332450 332750 333050 333350 333650 333950 334250 334550 334850 335150 335450 335750 336050 336350 336650 336950 337250 337550 337850 338150 338450 338750 339050 339350 339650 339950 340250 340550 340850 341150 341450 341750 342050 342350 342650 342950 343250 343550 343850 344150 344450 344750 345050 345350 345650 345950 346250 346550 346850 347150 347450 347750 348050 348350 348650 348950 349250 349550 349850 350150 350450 350750 351050 351350 351650 351950 352250 352550 352850 353150 353450 353750 354050 354350 354650 354950 355250 355550 355850 356150 356450 356750 357050 357350 357650 357950 358250 358550 358850 359150 359450 359750 360050 360350 360650 360950 361250 361550 361850 362150 362450 362750 363050 363350 363650 363950 364250 364550 364850 365150 365450 365750 366050 366350 366650 366950 367250 367550 367850 368150 368450 368750 369050 369350 369650 369950 370250 370550 370850 371150 371450 371750 372050 372350 372650 372950 373250 373550 373850 374150 374450 374750 375050 375350 375650 375950 376250 376550 376850 377150 377450 377750 378050 378350 378650 378950 379250 379550 379850 380150 380450 380750 381050 381350 381650 381950 382250 382550 382850 383150 383450 383750 384050 384350 384650 384950 385250 385550 385850 386150 386450 386750 387050 387350 387650 387950 388250 388550 388850 389150 389450 389750 390050 390350 390650 390950 391250 391550 391850 392150 392450 392750 393050 393350 393650 393950 394250 394550 394850 395150 395450 395750 396050 396350 396650 396950 397250 397550 397850 398150 398450 398750 399050 399350 399650 399950 400250 400550 400850 401150 401450 401750 402050 402350 402650 402950 403250 403550 403850 404150 404450 404750 405050 405350 405650 405950 406250 406550 406850 407150 407450 407750 408050 408350 408650 408950 409250 409550 409850 410150 410450 410750 411050 411350 411650 411950 412250 412550 412850 413150 413450 413750 414050 414350 414650 414950 415250 415550 415850 416150 416450 416750 417050 417350 417650 417950 418250 418550 418850 419150 419450 419750 420050 420350 420650 420950 421250 421550 421850 422150 422450 422750 423050 423350 423650 423950 424250 424550 424850 425150 425450 425750 426050 426350 426650 426950 427250 427550 427850 428150 428450 428750 429050 429350 429650 429950 430250 430550 430850 431150 431450 431750 432050 432350 432650 432950 433250 433550 433850 434150 434450 434750 435050 435350 435650 435950 436250 436550 436850 437150 437450 437750 438050 438350 438650 438950 439250 439550 439850 440150 440450 440750 441050 441350 441650 441950 442250 442550 442850 443150 443450 443750 444050 444350 444650 444950 445250 445550 445850 446150 446450 446750 447050 447350 447650 447950 448250 448550 448850 449150 449450 449750 450050 450350 450650 450950 451250 451550 451850 452150 452450 452750 453050 453350 453650 453950 454250 454550 454850 455150 455450 455750 456050 456350 456650 456950 457250 457550 457850 458150 458450 458750 459050 459350 459650 459950 460250 460550 460850 461150 461450 461750 462050 462350 462650 462

YATES PETROLEUM CORPORATION
Herkimer BQF Federal #1H Re-entry
1980' FSL and 1980' FWL, Surface Hole
330' FNL and 330' FWL, Bottom Hole
Section 21-T25S-R36E
Lea County, New Mexico

RECEIVED

SEP 16 2010
HOBBSOCD

1. The estimated tops of geologic markers are as follows:

Top of Salt	1479'	Target Brushy Canyon	7550'-Oil
Bottom Salt/Tansill	3294'	Bone Spring	7657'
Yates	3571'	FBSS	9327'
Seven Rivers	3798'	SBSS	10117'
Delaware Sand	5356'	TD	VD 7550'
		MTD	Lateral 10742'
2. The estimated depths at which anticipated water, oil or gas formations are expected to be encountered:

Water: Already Cased Off
Oil or Gas: 5078', 5754', 7170', 8880', & 9970'
3. Pressure Control Equipment: BOPE will be installed on the 7" casing and rated for 3000# BOP System. Pressure tests will be conducted before drilling out from under all casing strings, which are set and cemented in place. Blowout Preventer controls will be installed prior to drilling the surface plug and will remain in use until the well is completed or abandoned. Preventers will be inspected and operated at least daily to ensure good mechanical working order, and this inspection recorded on the daily drilling report. See Exhibit B.
4. Auxiliary Equipment: Kelly cock, pit level indicators, flow sensor equipment, and a sub with full opening valve to fit the drill pipe and collars will be available on the rig floor in the open position at all times for use when Kelly is not in use.
5. THE PROPOSED CASING AND CEMENTING PROGRAM:

A. Casing Program: All new casing to be used

See COA

Hole Size	Casing Size	Wt./Ft	Grade	Coupling	Interval	Length
17 1/2"	13 3/8"	48#		ST&C	0-350'-in place	
12 1/4"	9 5/8"	36#		ST&C	0-5290'-inplace	
8 3/4"	7"	26#		LT&C	0-11300'-in place	
6 1/8"	4 1/2"(new)	11.6#	HCP-110	LT&C	0-10742 MD	10742

**The 4.5" casing will be cut off above 6800' after it has been cemented to 6800' and pulled.
Minimum Casing Design Factors: Burst 1.0, Tensile Strength 1.8, Collapse 1.125

B. MUD PROGRAM:

From 7072' to 10742 will use cut brine, weight 8.9-9.1 and viscosity 28-29.

Assumed 8.9 ppv for drilling plugs.

B. CEMENTING PROGRAM:

Surface Casing: Originally cemented with 400 sacks and circulated to surface.

Intermediate Casing: Originally cemented with 2050 sacks and cement circulated to surface.

Production casing - spotty cement program.

Production Casing: Production cement will be done in one stage with a DV tool set at 6800'. Cement with 1150 sacks Pecos Valley Lite (Yld. 1.41 Wt. 13.0). TOC 6800'.

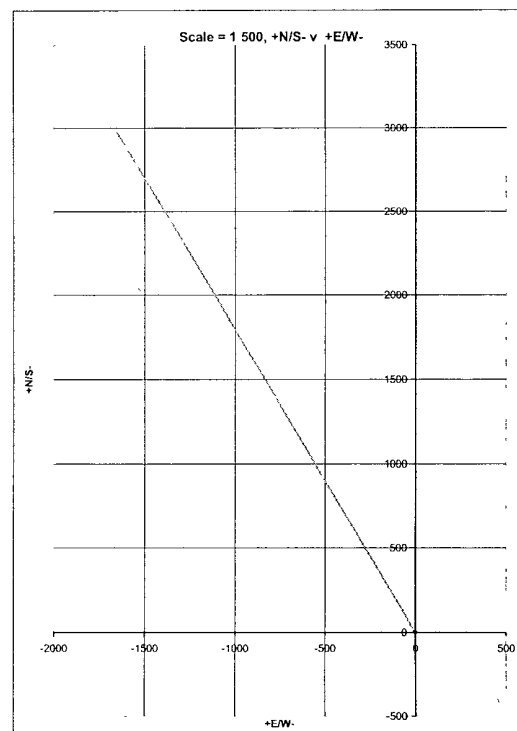
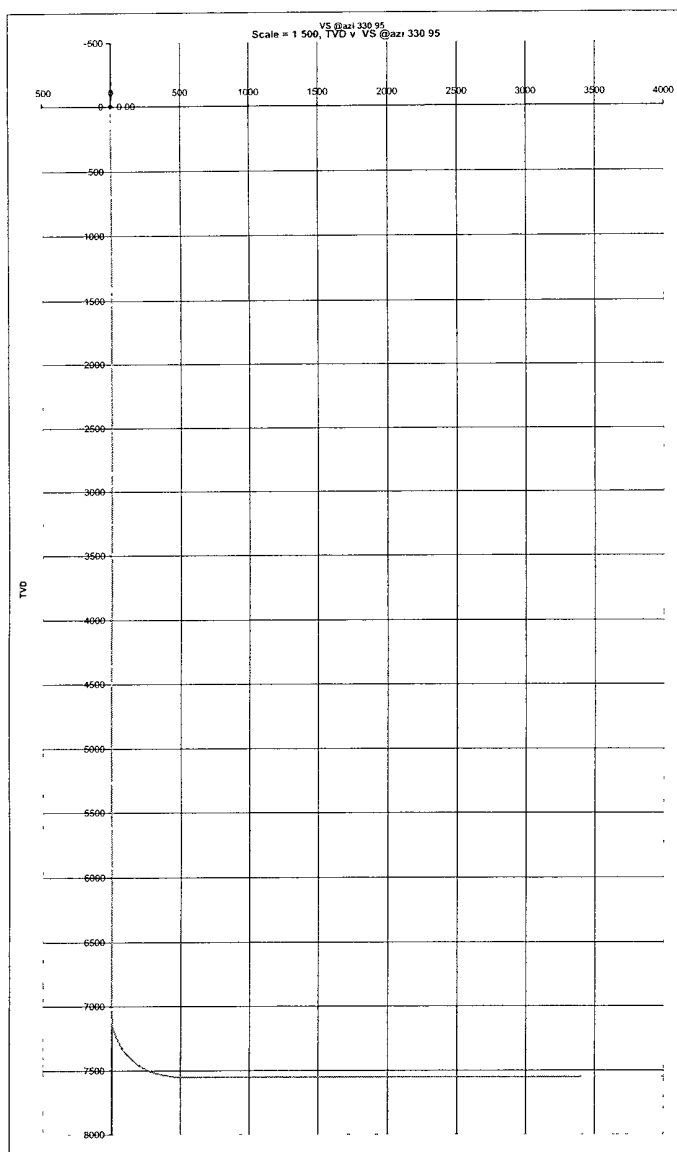
Herkimer BQF Federal #1H
Page Two

Maximum Anticipated BHP: 3651 PSI
Abnormal Pressure Anticipated: None
Lost Circulation Zones Anticipated: None
H2S Zones Anticipated: None
Maximum Bottom Hole Temperature: 130 F

*See
COP*

Yates Petroleum Corporation plans to re-enter this well using a completion unit and a drilling rig. The completion unit will drill out the plugs in the 7" casing, then run a cement bond log and casing integrity log. If there is no cement behind the casing 6900'-7050', Yates will perforate the casing and squeeze cement. The completion unit will then move off and the drilling rig will move on. A whipstock will be set at 7050' and a window will be milled in the casing. Curve will be cut at 12 degrees per 100' and landed at MD 7822' (TVD 7550'). A 2920' lateral will then be drilled at 90 degrees inc to a TD of MD 10742' (TVD 7550). Penetration point of the producing zone will be 2397' FSL and 1748' FWL.

Co: 0					Units: Feet, °, 100ft					VS Az: 330.95		Tgt TVD: 7550.00	
Drillers: 0					Elevation:					Tgt Radius: 0.00		Tgt MD: 0.00	
Well Name: West Jal A1 Reentry					Northing:					Tgt N/S: 2970.00		Tgt Displ.: 0.00	
Location: 21-25S-36E					Easting:					Tgt E/W: -1650.00		Method: Minimum Curvature	
West Jal A1 Reentry													
No.	MD	CL	Inc.	Azi.	TVD	VS	+N/S-	+E/W-	BR	WR	DLS	Comment	
0	0.00	0.00	0.00	0.00	0.00	0.00	0.00	0.00					
1	7072.54	7072.54	0.00	330.95	7072.54	0.01	0.01	0.00	0.00	-0.41	0.00		
2	7200.00	127.46	15.30	330.95	7198.49	16.92	14.79	-8.21	12.00	0.00	12.00		
3	7400.00	200.00	39.30	330.95	7374.93	107.97	94.38	-52.43	12.00	0.00	12.00		
4	7600.00	200.00	63.30	330.95	7499.07	262.90	229.82	-127.67	12.00	0.00	12.00		
5	7800.00	200.00	87.30	330.95	7549.47	454.94	397.69	-220.94	12.00	0.00	12.00		
6	7822.53	750.00	90.00	330.95	7550.00	477.47	417.38	-231.88	12.00	0.00	12.00		
7	8000.00	177.47	90.00	330.95	7550.00	654.93	572.52	-318.06	0.00	0.00	0.00		
8	8500.00	500.00	90.00	330.95	7550.00	1154.93	1009.60	-560.88	0.00	0.00	0.00		
9	9000.00	500.00	90.00	330.95	7550.00	1654.93	1446.68	-803.70	0.00	0.00	0.00		
10	9500.00	500.00	90.00	330.95	7550.00	2154.93	1883.75	-1046.52	0.00	0.00	0.00		
11	10000.00	500.00	90.00	330.95	7550.00	2654.93	2320.83	-1289.35	0.00	0.00	0.00		
12	10500.00	500.00	90.00	330.95	7550.01	3154.93	2757.91	-1532.17	0.00	0.00	0.00		
13	10742.63	2920.09	90.00	330.95	7550.01	3397.56	2970.01	-1650.00	0.00	0.00	0.00		



West Jal A1 Reentry												
No.	MD	CL	Inc.	Azi.	TVD	VS	+N/S-	+E/W-	BR	WR	DLS	Comments
0	0 00	0 00	0 00	0 00	0 00	0 00	0 00	0 00	0 00	0 00	0 00	
1	7072.54	7072.54	0 00	330.95	7072.54	0 01	0 01	0 00	0 00	-0.41	0 00	
2	7200.00	127.46	15.30	330.95	7198.49	16.92	14.79	-8.21	12.00	0 00	12.00	
3	7400.00	200.00	39.30	330.95	7374.93	107.97	94.38	-52.43	12.00	0 00	12.00	
4	7600.00	200.00	63.30	330.95	7499.07	262.90	229.82	-127.67	12.00	0 00	12.00	
5	7800.00	200.00	87.30	330.95	7549.47	454.94	397.69	-220.94	12.00	0 00	12.00	
6	7822.53	750.00	90.00	330.95	7550.00	477.47	417.38	-231.88	12.00	0 00	12.00	
7	8000.00	177.47	90.00	330.95	7550.00	654.93	572.52	-318.06	0 00	0 00	0 00	
8	8500.00	500.00	90.00	330.95	7550.00	1154.93	1009.60	-560.88	0 00	0 00	0 00	
9	9000.00	500.00	90.00	330.95	7550.00	1654.93	1446.68	-803.70	0 00	0 00	0 00	
10	9500.00	500.00	90.00	330.95	7550.00	2154.93	1883.75	-1046.52	0 00	0 00	0 00	
11	10000.00	500.00	90.00	330.95	7550.00	2654.93	2320.83	-1289.35	0 00	0 00	0 00	
12	10500.00	500.00	90.00	330.95	7550.01	3154.93	2757.91	-1532.17	0 00	0 00	0 00	
13	10742.63	2920.09	90.00	330.95	7550.01	3397.56	2970.01	-1650.00	0 00	0 00	0 00	

WELL NAME: West Jal A #1

FIELD: Jal Strawn West

LOCATION: Unit K, 1980' FSL & 1980' FWL of Section 21-25S-36E

Lea Co., NM

GL: 3095' DF ZERO: KB:

SPUD DATE: 5/9/63 COMPLETION DATE:

COMMENTS: API No.: 30-025-20381

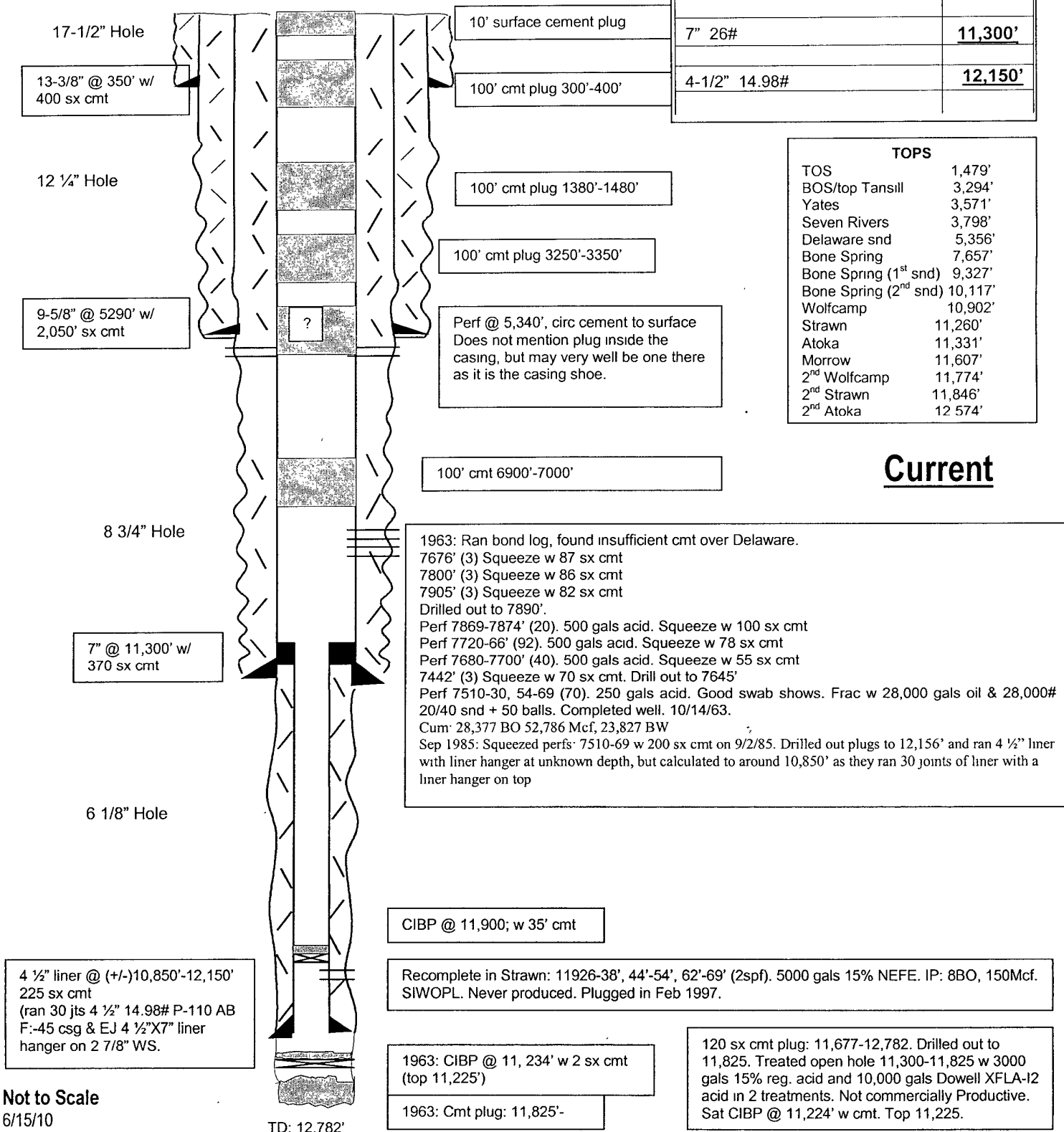
P&A 2/11/97

CASING PROGRAM

13-3/8" 48#	350'
9-5/8" 36#	5,290'
7" 26#	11,300'
4-1/2" 14.98#	12,150'

TOPS

TOS	1,479'
BOS/top Tansill	3,294'
Yates	3,571'
Seven Rivers	3,798'
Delaware snd	5,356'
Bone Spring	7,657'
Bone Spring (1 st snd)	9,327'
Bone Spring (2 nd snd)	10,117'
Wolfcamp	10,902'
Strawn	11,260'
Atoka	11,331'
Morrow	11,607'
2 nd Wolfcamp	11,774'
2 nd Strawn	11,846'
2 nd Atoka	12,574'

Current

Not to Scale

6/15/10

WELL NAME: West Jal A #1 FIELD: Jal Strawn West

LOCATION: Unit K, 1980' FSL & 1980' FWL of Section 21-25S-36E Lea Co., NM

GL: 3095' DF ZERO: KB:

SPUD DATE: 5/9/63 COMPLETION DATE:

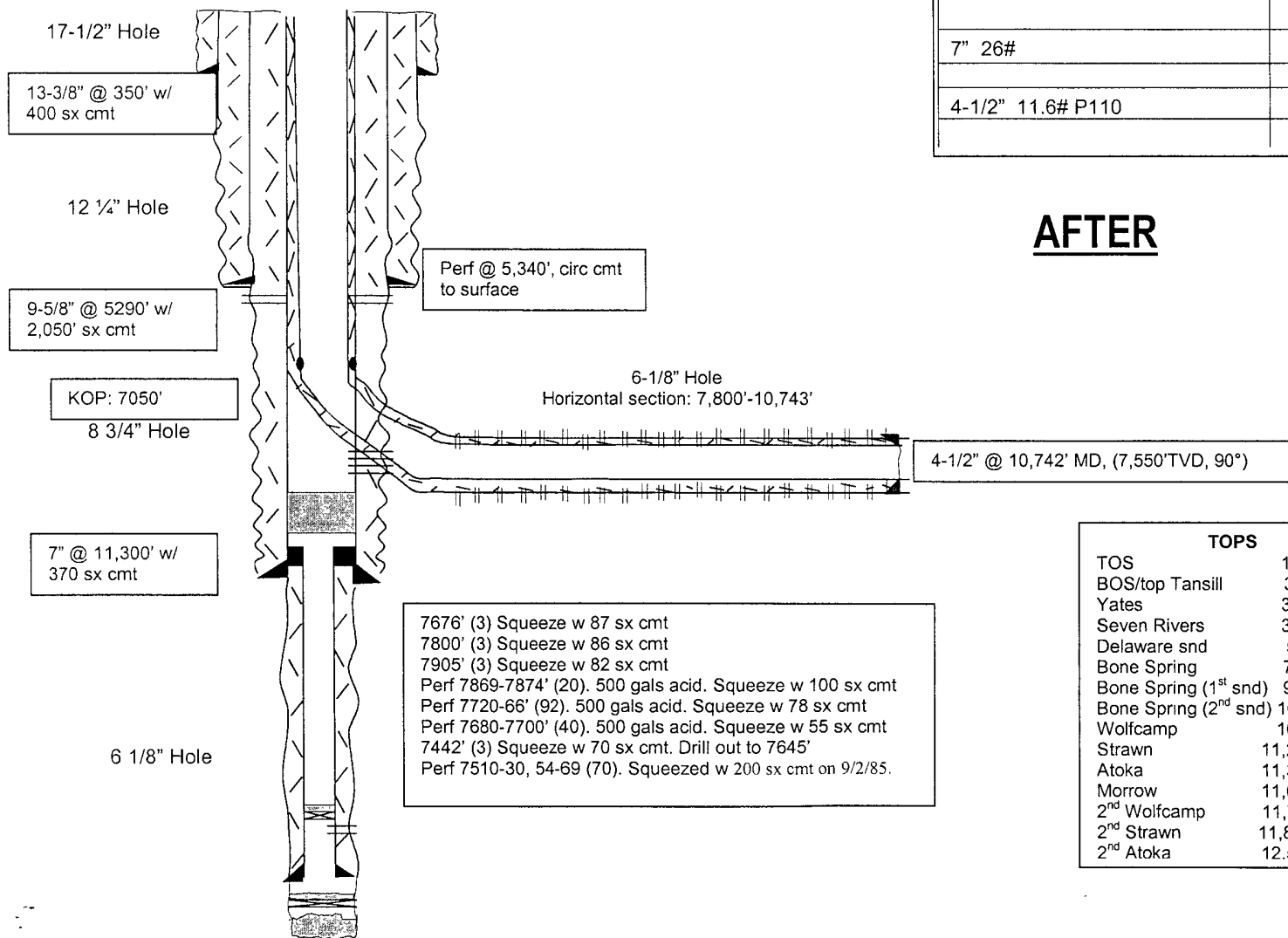
COMMENTS: API No.: 30-025-20381

P&A 2/11/97

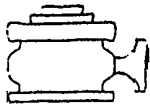
CASING PROGRAM

13-3/8" 48#	<u>350'</u>
9-5/8" 36#	<u>5,290'</u>
7" 26#	<u>11,300'</u>
4-1/2" 11.6# P110	<u>10,742'</u>

AFTER



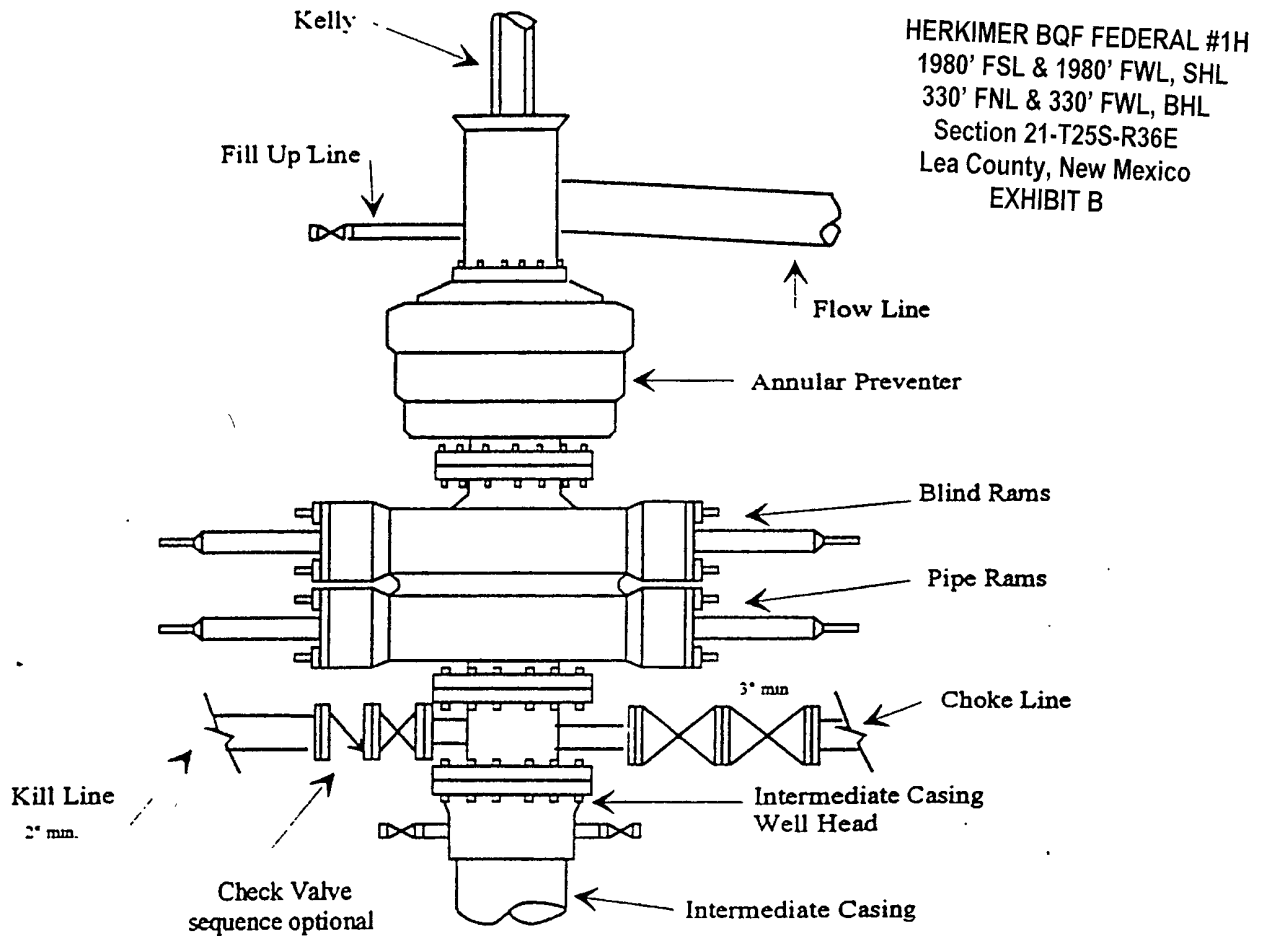
Not to Scale
7/6/10
MMFH



Yates Petroleum Corporation

BOP-3

Typical 3,000 psi Pressure System Schematic Annular with Double Ram Preventer Stack



Typical 3,000 psi choke manifold assembly with at least these minimum features

