

UNITED STATES
DEPARTMENT OF THE INTERIOR
BUREAU OF LAND MANAGEMENT

OCD-HOBBS

APPLICATION FOR PERMIT TO DRILL OR REENTER

ATS-10-692
FORM APPROVED
OMB No. 1004-0136
Expires January 31, 2004

1a. Type of Work: ☒ DRILL ☐ REENTER

1b. Type of Well: ☒ Oil Well ☐ Gas Well ☐ Other ☐ Single Zone ☐ Multiple Zone

2. Name of Operator

Mewbourne Oil Company <14744>

3a. Address

PO Box 5270 Hobbs, NM 88241

3b. Phone No. (include area code) <4145>

575-393-5905

4. Location of Well (Report location clearly and in accordance with any State requirements. *)

At surface 710' FNL & 330' FWL (SL) Unit D

At proposed prod. zone 600' FNL & 330' FEL (BHL) Unit A

14. Distance in miles and direction from nearest town or post office*

8 miles South of Maljamar, NM

15. Distance from proposed*
location to nearest
property or lease line, ft.
(Also to nearest drig. unit line, if any) 330'

16. No. of Acres in lease

80

17. Spacing Unit dedicated to this well

160

18. Distance from proposed location*
to nearest well, drilling, completed,
applied for, on this lease, ft. 1345'

19. Proposed Depth

12649' MD
8321' TVD

20. BLM/BIA Bond No. on file

NM1693, Nationwide

21. Elevations (Show whether DF, KDB, RT, GL, etc.)

3698' GL

22. Approximate date work will start*

ASAP

23. Estimated duration

40

24. Attachments

The following, completed in accordance with the requirements of Onshore Oil and Gas Order No. 1, shall be attached to this form:

1. Well plat certified by a registered surveyor.

2. A Drilling Plan

3. A Surface Use Plan (if the location is on National Forest System Lands, the
SUPO shall be filed with the appropriate Forest Service Office).

4. Bond to cover the operations unless covered by an existing bond on file (see
Item 20 above).

5. Operator certification

6. Such other site specific information and/or plans as may be required by the
authorized officer.

25 Signature

Name (Printed/Typed)

Date

Title

Jackie Lathan

07/13/10

Hobbs Regulatory

Approved by (Signature)

/s/ Don Peterson

Name (Printed/Typed)

Date

SEP 9 2010

Title

FIELD MANAGER

Office

CARLSBAD FIELD OFFICE

Application approval does not warrant or certify that the applicant holds legal or equitable title to those rights in the subject lease which would entitle the applicant to conduct
operations thereon.

Conditions of approval, if any, are attached.

APPROVAL FOR TWO YEARS

Title 18 U.S.C. Section 1001 and Title 43 U.S.C. Section 1212, make it a crime for any person knowingly and willfully to make to any department or agency of the United
States any false, fictitious or fraudulent statements or representations as to any matter within its jurisdiction

*(Instructions on reverse)

Capitan Controlled Water Basin

RECEIVED
SEP 16 2010
HOBBSOCD

K2 9/21/10
Approval Subject to General Requirements
& Special Stipulations Attached

SEE ATTACHED FOR
CONDITIONS OF APPROVAL

DISTRICT I
1625 N. French Dr., Hobbs, NM 88240

DISTRICT II
1301 W. Grand Avenue, Artesia, NM 88210

DISTRICT III
1000 Rio Brazos Rd., Aztec, NM 87410

DISTRICT IV
1220 S. St. Francis Dr., Santa Fe, NM 87505

RECEIVED

SEP 16 2010

HOBBSOCD

State of New Mexico
Energy, Minerals and Natural Resources Department

Form C-102
Revised October 15, 2009

Submit one copy to appropriate
District Office

OIL CONSERVATION DIVISION

1220 South St. Francis Dr.
Santa Fe, New Mexico 87505

WELL LOCATION AND ACREAGE DEDICATION PLAT

☐ AMENDED REPORT

API Number 30-025-39904	Pool Code 56439 4/450	Pool Name Lusk Bone Spring North
Property Code 38317	Property Name COCHISE "30" FEDERAL COM	Well Number 1H
GRID No. 14744	Operator Name MEWBOURNE OIL COMPANY	Elevation 3698'

Surface Location

UL or lot No.	Section	Township	Range	Lot Idn	Feet from the	North/South line	Feet from the	East/West line	County
D	30	18 S	32 E		710	NORTH	330	WEST	LEA

Bottom Hole Location If Different From Surface

UL or lot No.	Section	Township	Range	Lot Idn	Feet from the	North/South line	Feet from the	East/West line	County
A	30	18 S	32 E		600	North	330	East	Lea

Dedicated Acres	Joint or Infill	Consolidation Code	Order No.
160			

NO ALLOWABLE WILL BE ASSIGNED TO THIS COMPLETION UNTIL ALL INTERESTS HAVE BEEN CONSOLIDATED
OR A NON-STANDARD UNIT HAS BEEN APPROVED BY THE DIVISION

<p>SURFACE LOCATION</p> <p>Lat - N 32°43'25.62" Long - W 103°48'46.14" NMSPCE - N 627415.999 E 860077.950 (NAD-27)</p> <p>Surface Producing Area</p> <p>NM9016 NM9017 NM106717</p>	<p>OPERATOR CERTIFICATION</p> <p>I hereby certify that the information contained herein is true and complete to the best of my knowledge and belief, and that this organization either owns a working interest or unleased mineral interest in the land including the proposed bottom hole location or has a right to drill this well at this location pursuant to a contract with an owner of such a mineral or working interest, or to a voluntary pooling agreement or a compulsory pooling order heretofore entered by the division.</p> <p>Jackie Lathan 6/3/10 Signature Date</p> <p>Jackie Lathan Printed Name</p>
	<p>SURVEYOR CERTIFICATION</p> <p>I hereby certify that the well location shown on this plat was plotted from field notes of actual surveys made by me or under my supervision, and that the same is true and correct to the best of my belief.</p>
	<p>Date Surveyed: 6/3/10 Signature: [Signature] Seal of Professional Surveyor 7977</p>
	<p>Certificate No. Gary L. Jones 7977</p> <p>BASIN SURVEYS</p>

United States Department of the Interior
Bureau of Land Management
Carlsbad Field Office
620 E Greene Street
Carlsbad, New Mexico 88201-1287

RECEIVED
SEP 16 2010
HOBBSOCD

Statement Accepting Responsibility for Operations

Operator Name: Mewbourne Oil Company
Street or Box: P.O. Box 5270
City, State: Hobbs, New Mexico
Zip Code: 88241

The undersigned accepts all applicable terms, conditions, stipulations, and restrictions concerning operations conducted of the leased land or portion thereof, as described below.

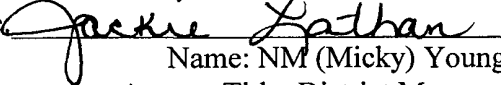
Lease Number: Lease Number NM-9016 (SL)
NM-106717 (BHL)

Legal Description of Land: Section 30, T-18S, R-32E Lea County, New Mexico.
Location @ 710' FNL & 330' FWL.

Formation (if applicable): Bone Spring

Bond Coverage: \$150,000

BLM Bond File: NM1693, Nationwide

Authorized Signature: 
Name: NM (Micky) Young
for Title: District Manager
Date: July 13, 2010

Drilling Program
Mewbourne Oil Company
 Cochise 30 Federal Com #1H
 710' FNL & 330' FWL (SHL)
 Sec 30-T18S-R32E
 Lea County, New Mexico

RECEIVED
 SEP 16 2010
 HOBBSOCD

1. The estimated tops of geological markers are as follows:

Rustler	923
Yates	2490'
San Andres	4437'
Delaware	4750'
*Bone Spring	6610'

2. Estimated depths of anticipated fresh water, oil, or gas:

Water	Fresh water will be protected by setting surface casing at 900' ^{See COA 1020'} and cementing to surface.
Hydrocarbons	Oil and gas are anticipated in the above (*) formations. These zones will be protected by casing as necessary.

3. Pressure control equipment:

A 3000# WP Double Ram BOP and 3000# WP Annular will be installed after running 9 5/8" & 7" casing. Pressure tests will be conducted prior to drilling out under all casing strings. BOP controls will be installed prior to drilling under surface casing and will remain in use until completion of drilling operations. BOP's will be inspected and operated as recommended in Onshore Order #2. A Kelly cock and a sub equipped with a full opening valve sized to fit the drill pipe and collars will be available on the rig floor in the open position when the Kelly is not in used. Will test the 9 5/8" & 7" BOPE to 3000# and Annular to 1500# with a third party testing company before drilling below each shoe, but will test again, if needed, in 30 days from the 1st test as per BLM Onshore Oil and Gas Order #2.

***4. Proposed casing and cementing program:**

A. Casing Program:

<u>Hole Size</u>	<u>Casing</u>	<u>Wt/Ft.</u>	<u>Grade</u>	<u>Depth</u>	<u>Jt Type</u>
12 1/4"	9 5/8" (new)	36#	J55	0'- 900' ^{See COA 1020'}	ST&C
8 3/4"	7" (new)	26#	P110	0-7600'	LT&C
8 3/4"	7" (new)	26#	P110	7600'-8500'	BT/C
6 1/8"	4 1/2" (new)	11.6#	P110	8300'-12650'	LT&C

Minimum casing design factors: Collapse 1.125, Burst 1.0, Tensile strength 1.8.
 { *Subject to availability of casing. }

See COA

B. Cementing Program:

- i. Surface Casing: 400 sacks Class "C" cement containing 2% CaCl. Yield at 1.34 cuft/sk. Cmt circulated to surface.
- ii. Intermediate Casing: 500 sacks 35:65 poz mix H cement containing 6% gel, 5#/sack gilsonite. Yield at 1.98 cuft/sk. 400 sacks Class H cement containing FLA. Yield at 1.28 cuft/sk. Cmt circulated to surface.
- iii. Production Casing: Plans are to use a Packer-Plus system with 4 1/2" casing. Will run Packer type liner @ 8300'.

See COA
liner

~~*Mewbourne Oil Company reserves the right to change cement designs as hole conditions may warrant.~~

5. Mud Program:

Interval	Type System	Weight	Viscosity	Fluid Loss
0'-900'	FW spud mud	8.6-9.0	32-34	NA
900'-8500'	Brine water	10.0-10.2	28-30	NA
8500'-12650'	FW w/Polymer	8.5-8.7	32-35	15

6. Evaluation Program:

See COA

Samples: 10' samples from surface casing to TD
Logging: Tie-in GR & Gyro from KOP (7800') to surface. GR from 7800' to TD.

7. Downhole Conditions

Zones of abnormal pressure: None anticipated
Zones of lost circulation: Anticipated in surface and intermediate holes
Maximum bottom hole temperature: 120 degree F
Maximum bottom hole pressure: 8.3 lbs/gal gradient or less

8. Anticipated Starting Date:

Mewbourne Oil Company intends to drill this well as soon as possible after receiving approval with approximately 45 days involved in drilling operations and an additional 10 days involved in completion operations on the project.

Mewbourne Oil Company

Location: Lea County, NM
Field: (Conchise) Sec 30, T18S, R32E
Facility: Conchise 30 Fed Com No. 1H

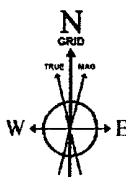
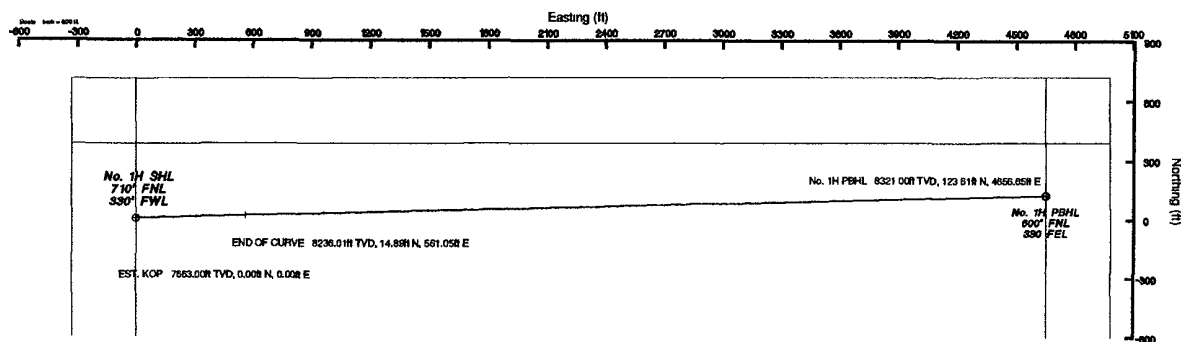
Slot: No. 1H SHL
Well: No. 1H
Wellbore: No. 1H PWB

SEP 16 2010
HOBBSOC



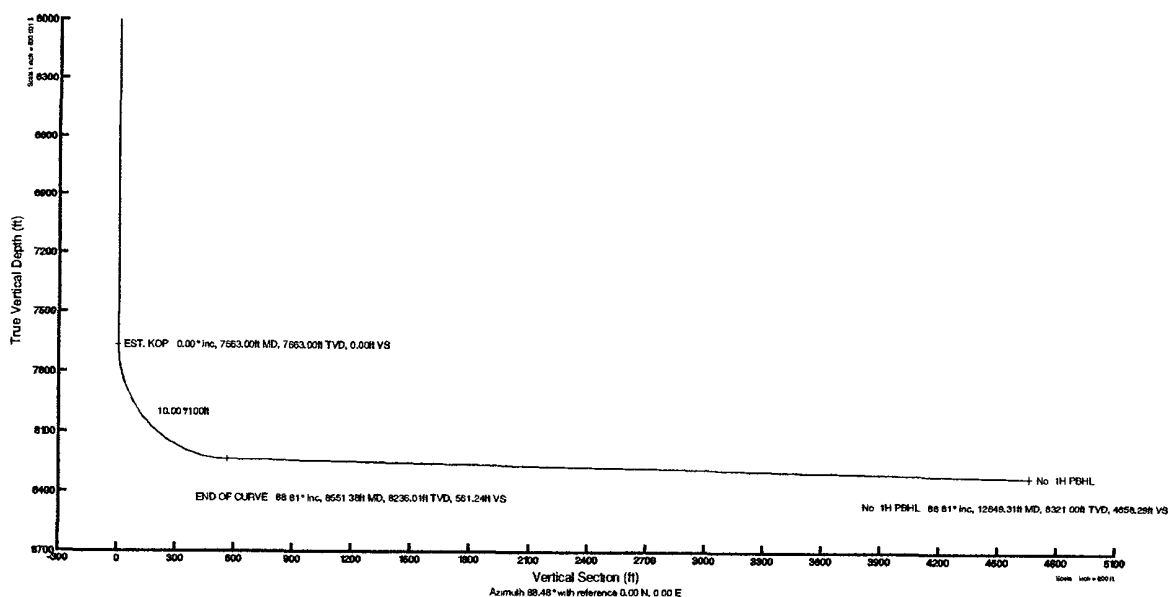
Well Profile Data

Design Comment	MD (ft)	Inc (°)	Az (°)	TVD (ft)	Local N (ft)	Local E (ft)	DLS (°100ft)	VS (ft)
Tie On	0.00	0.000	88.479	0.00	0.00	0.00	0.00	0.00
EST. KOP	7663.00	0.000	88.479	7663.00	0.00	0.00	0.00	0.00
END OF CURVE	8551.38	88.812	88.479	8236.01	14.89	561.05	10.00	561.24
No. 1H PWB	12649.31	88.812	88.479	8321.00	123.61	4656.65	0.00	4658.29



BGGM (1945.0 to 2011.0) Dip: 60.65° Field: 49060.7 nT
Magnetic North is 7.90 degrees East of True North (at 5/24/2010)
Grid North is 0.28 degrees East of True North
To correct azimuth from True to Grid subtract 0.28 degrees
To correct azimuth from Magnetic to Grid add 7.62 degrees
For example: if the Magnetic North Azimuth = 90 degs, then the Grid North Azimuth = 90 + 7.62 = 97.62

Plot reference wellpath is Plan #1	
True vertical depths are referenced to Rig 45 on No. 1H SHL (KB)	Grid System: NAD27 / TM New Mexico State Planes, Eastern Zone (3001), US feet
Measured depths are referenced to Rig 45 on No. 1H SHL (KB)	North Reference: Grid north
Rig 45 on No. 1H SHL (KB) to Mean Sea Level: 3716 feet	Scale: True distance
Mean Sea Level to Mud line (Facility, Conchise 30 Fed Com No. 1H): -3698 feet	Depths are in feet
Coordinates are in feet referenced to Slot	Created by: Victor Hernandez on 5/24/2010



RECEIVED

SEP 16 2010

HOBSOCD

Planned Wellpath Report

Plan #1

Page 1 of 4



REFERENCE WELLPATH IDENTIFICATION

Operator	Mewbourne Oil Company	Slot	No. 1H SHL
Area	Lea County, NM	Well	No. 1H
Field	(Conchise) Sec 30, T18S, R32E	Wellbore	No. 1H PWB
Facility	Conchise 30 Fed Com No. 1H		

REPORT SETUP INFORMATION

Projection System	NAD27 / TM New Mexico State Planes, Eastern Zone (3001), US feet	Software System	WellArchitect@ 2.0
North Reference	Grid	User	Victor Hernandez
Scale	0.999938	Report Generated	5/24/2010 at 4:46:49 PM
Convergence at slot	0.28° East	Database/Source file	WellArchitectDB/No. 1H_PWB.xml

WELLPATH LOCATION

	Local coordinates		Grid coordinates		Geographic coordinates	
	North[ft]	East[ft]	Easting[USft]	Northing[USft]	Latitude	Longitude
Slot Location	0.00	0.00	660077.95	627416.00	32°43'25.616"N	103°48'46.140"W
Facility Reference Pt			660077.95	627416.00	32°43'25.616"N	103°48'46.140"W
Field Reference Pt			660077.95	627416.00	32°43'25.616"N	103°48'46.140"W

WELLPATH DATUM

Calculation method	Minimum curvature	Rig 45 on No. 1H SHL (KB) to GL	18.00ft
Horizontal Reference Pt	Slot	Rig 45 on No. 1H SHL (KB) to Mean Sea Level	3716.00ft
Vertical Reference Pt	Rig 45 on No. 1H SHL (KB)	GL to Mud Line (Facility)	0.00ft
MD Reference Pt	Rig 45 on No. 1H SHL (KB)	Section Origin	N 0.00, E 0.00 ft
Field Vertical Reference	Mean Sea Level	Section Azimuth	88.48°

Planned Wellpath Report

Plan #1
Page 2 of 4

REFERENCE WELLPATH IDENTIFICATION

Operator	Mewbourne Oil Company	Slot	No. 1H SHL
Area	Lea County, NM	Well	No. 1H
Field	(Conchise) Sec 30, T18S, R32E	Wellbore	No. 1H PWB
Facility	Conchise 30 Fed Com No. 1H		

WELLPATH DATA (53 stations) † = interpolated/extrapolated station

MD [ft]	Inclination [°]	Azimuth [°]	TVD [ft]	Vert Sect [ft]	North [ft]	East [ft]	Grid East [srv ft]	Grid North [srv ft]	Latitude	Longitude	DLS [°/100ft]	Comments
0.00	0.000	88.479	0.00	0.00	0.00	0.00	660077.95	627416.00	32°43'25.616"N	103°48'46.140"W	0.00	Tie On
7663.00	0.000	88.479	7663.00	0.00	0.00	0.00	660077.95	627416.00	32°43'25.616"N	103°48'46.140"W	0.00	EST. KOP
7763.00†	9.997	88.479	7762.49	8.70	0.23	8.70	660086.65	627416.23	32°43'25.618"N	103°48'46.039"W	10.00	
7863.00†	19.994	88.479	7858.97	34.54	0.92	34.53	660112.48	627416.92	32°43'25.623"N	103°48'45.736"W	10.00	
7963.00†	29.991	88.479	7949.49	76.74	2.04	76.71	660154.66	627418.04	32°43'25.632"N	103°48'45.242"W	10.00	
8063.00†	39.988	88.479	8031.31	134.01	3.56	133.96	660211.90	627419.56	32°43'25.645"N	103°48'44.572"W	10.00	
8163.00†	49.985	88.479	8101.95	204.61	5.43	204.54	660282.48	627421.43	32°43'25.660"N	103°48'43.746"W	10.00	
8263.00†	59.982	88.479	8159.25	286.41	7.60	286.31	660364.24	627423.60	32°43'25.677"N	103°48'42.789"W	10.00	
8363.00†	69.979	88.479	8201.49	376.91	10.00	376.78	660454.70	627426.00	32°43'25.696"N	103°48'41.730"W	10.00	
8463.00†	79.976	88.479	8227.38	473.37	12.56	473.20	660551.12	627428.56	32°43'25.717"N	103°48'40.601"W	10.00	
8551.38	88.812	88.479	8236.01	561.24	14.89	561.05	660638.96	627430.89	32°43'25.736"N	103°48'39.573"W	10.00	END OF CURVE
8563.00†	88.812	88.479	8236.25	572.86	15.20	572.66	660650.57	627431.20	32°43'25.738"N	103°48'39.437"W	0.00	
8663.00†	88.812	88.479	8238.32	672.84	17.85	672.60	660750.51	627433.85	32°43'25.760"N	103°48'38.267"W	0.00	
8763.00†	88.812	88.479	8240.40	772.81	20.51	772.54	660850.44	627436.51	32°43'25.781"N	103°48'37.097"W	0.00	
8863.00†	88.812	88.479	8242.47	872.79	23.16	872.49	660950.38	627439.16	32°43'25.802"N	103°48'35.927"W	0.00	
8963.00†	88.812	88.479	8244.54	972.77	25.81	972.43	661050.32	627441.81	32°43'25.824"N	103°48'34.757"W	0.00	
9063.00†	88.812	88.479	8246.62	1072.75	28.47	1072.37	661150.25	627444.46	32°43'25.845"N	103°48'33.587"W	0.00	
9163.00†	88.812	88.479	8248.69	1172.73	31.12	1172.32	661250.19	627447.12	32°43'25.867"N	103°48'32.417"W	0.00	
9263.00†	88.812	88.479	8250.77	1272.71	33.77	1272.26	661350.13	627449.77	32°43'25.888"N	103°48'31.247"W	0.00	
9363.00†	88.812	88.479	8252.84	1372.69	36.42	1372.20	661450.07	627452.42	32°43'25.909"N	103°48'30.077"W	0.00	
9463.00†	88.812	88.479	8254.91	1472.66	39.08	1472.15	661550.00	627455.07	32°43'25.931"N	103°48'28.907"W	0.00	
9563.00†	88.812	88.479	8256.99	1572.64	41.73	1572.09	661649.94	627457.73	32°43'25.952"N	103°48'27.737"W	0.00	
9663.00†	88.812	88.479	8259.06	1672.62	44.38	1672.03	661749.88	627460.38	32°43'25.973"N	103°48'26.567"W	0.00	
9763.00†	88.812	88.479	8261.14	1772.60	47.04	1771.98	661849.81	627463.03	32°43'25.995"N	103°48'25.397"W	0.00	
9863.00†	88.812	88.479	8263.21	1872.58	49.69	1871.92	661949.75	627465.69	32°43'26.016"N	103°48'24.227"W	0.00	
9963.00†	88.812	88.479	8265.28	1972.56	52.34	1971.86	662049.69	627468.34	32°43'26.037"N	103°48'23.057"W	0.00	
10063.00†	88.812	88.479	8267.36	2072.54	54.99	2071.81	662149.62	627470.99	32°43'26.059"N	103°48'21.887"W	0.00	
10163.00†	88.812	88.479	8269.43	2172.51	57.65	2171.75	662249.56	627473.64	32°43'26.080"N	103°48'20.717"W	0.00	
10263.00†	88.812	88.479	8271.51	2272.49	60.30	2271.69	662349.50	627476.30	32°43'26.101"N	103°48'19.547"W	0.00	
10363.00†	88.812	88.479	8273.58	2372.47	62.95	2371.64	662449.43	627478.95	32°43'26.123"N	103°48'18.377"W	0.00	

Planned Wellpath Report

Plan #1
Page 3 of 4

REFERENCE WELLPATH IDENTIFICATION

Operator	Mewbourne Oil Company	Slot	No. 1H SHL
Area	Lea County, NM	Well	No. 1H
Field	(Conchise) Sec 30, T18S, R32E	Wellbore	No. 1H PWB
Facility	Conchise 30 Fed Com No. 1H		

WELLPATH DATA (53 stations) † = interpolated/extrapolated station

MD [ft]	Inclination [°]	Azimuth [°]	TVD [ft]	Vert Sect [ft]	North [ft]	East [ft]	Grid East [srv ft]	Grid North [srv ft]	Latitude	Longitude	DLS [°/100ft]	Comments
10463.00†	88.812	88.479	8275.65	2472.45	65.61	2471.58	662549.37	627481.60	32°43'26.144"N	103°48'17.207"W	0.00	
10563.00†	88.812	88.479	8277.73	2572.43	68.26	2571.52	662649.31	627484.26	32°43'26.165"N	103°48'16.037"W	0.00	
10663.00†	88.812	88.479	8279.80	2672.41	70.91	2671.47	662749.25	627486.91	32°43'26.187"N	103°48'14.867"W	0.00	
10763.00†	88.812	88.479	8281.88	2772.38	73.57	2771.41	662849.18	627489.56	32°43'26.208"N	103°48'13.698"W	0.00	
10863.00†	88.812	88.479	8283.95	2872.36	76.22	2871.35	662949.12	627492.21	32°43'26.229"N	103°48'12.528"W	0.00	
10963.00†	88.812	88.479	8286.02	2972.34	78.87	2971.30	663049.06	627494.87	32°43'26.251"N	103°48'11.358"W	0.00	
11063.00†	88.812	88.479	8288.10	3072.32	81.52	3071.24	663148.99	627497.52	32°43'26.272"N	103°48'10.188"W	0.00	
11163.00†	88.812	88.479	8290.17	3172.30	84.18	3171.18	663248.93	627500.17	32°43'26.293"N	103°48'09.018"W	0.00	
11263.00†	88.812	88.479	8292.25	3272.28	86.83	3271.12	663348.87	627502.82	32°43'26.314"N	103°48'07.848"W	0.00	
11363.00†	88.812	88.479	8294.32	3372.26	89.48	3371.07	663448.80	627505.48	32°43'26.336"N	103°48'06.678"W	0.00	
11463.00†	88.812	88.479	8296.40	3472.23	92.14	3471.01	663548.74	627508.13	32°43'26.357"N	103°48'05.508"W	0.00	
11563.00†	88.812	88.479	8298.47	3572.21	94.79	3570.95	663648.68	627510.78	32°43'26.378"N	103°48'04.338"W	0.00	
11663.00†	88.812	88.479	8300.54	3672.19	97.44	3670.90	663748.61	627513.44	32°43'26.400"N	103°48'03.168"W	0.00	
11763.00†	88.812	88.479	8302.62	3772.17	100.09	3770.84	663848.55	627516.09	32°43'26.421"N	103°48'01.998"W	0.00	
11863.00†	88.812	88.479	8304.69	3872.15	102.75	3870.78	663948.49	627518.74	32°43'26.442"N	103°48'00.828"W	0.00	
11963.00†	88.812	88.479	8306.77	3972.13	105.40	3970.73	664048.43	627521.39	32°43'26.463"N	103°47'59.658"W	0.00	
12063.00†	88.812	88.479	8308.84	4072.11	108.05	4070.67	664148.36	627524.05	32°43'26.485"N	103°47'58.488"W	0.00	
12163.00†	88.812	88.479	8310.91	4172.08	110.71	4170.61	664248.30	627526.70	32°43'26.506"N	103°47'57.318"W	0.00	
12263.00†	88.812	88.479	8312.99	4272.06	113.36	4270.56	664348.24	627529.35	32°43'26.527"N	103°47'56.148"W	0.00	
12363.00†	88.812	88.479	8315.06	4372.04	116.01	4370.50	664448.17	627532.00	32°43'26.548"N	103°47'54.978"W	0.00	
12463.00†	88.812	88.479	8317.14	4472.02	118.67	4470.44	664548.11	627534.66	32°43'26.570"N	103°47'53.808"W	0.00	
12563.00†	88.812	88.479	8319.21	4572.00	121.32	4570.39	664648.05	627537.31	32°43'26.591"N	103°47'52.638"W	0.00	
12649.31	88.812	88.479	8321.00†	4658.29	123.61	4656.65	664734.30	627539.60	32°43'26.609"N	103°47'51.628"W	0.00	No. 1H PBHL

Planned Wellpath Report

Plan #1
Page 4 of 4

REFERENCE WELLPATH IDENTIFICATION

Operator	Mewbourne Oil Company	Slot	No. 1H SHL
Area	Lea County, NM	Well	No. 1H
Field	(Conchise) Sec 30, T18S, R32E	Wellbore	No. 1H PWB
Facility	Conchise 30 Fed Com No. 1H		

TARGETS

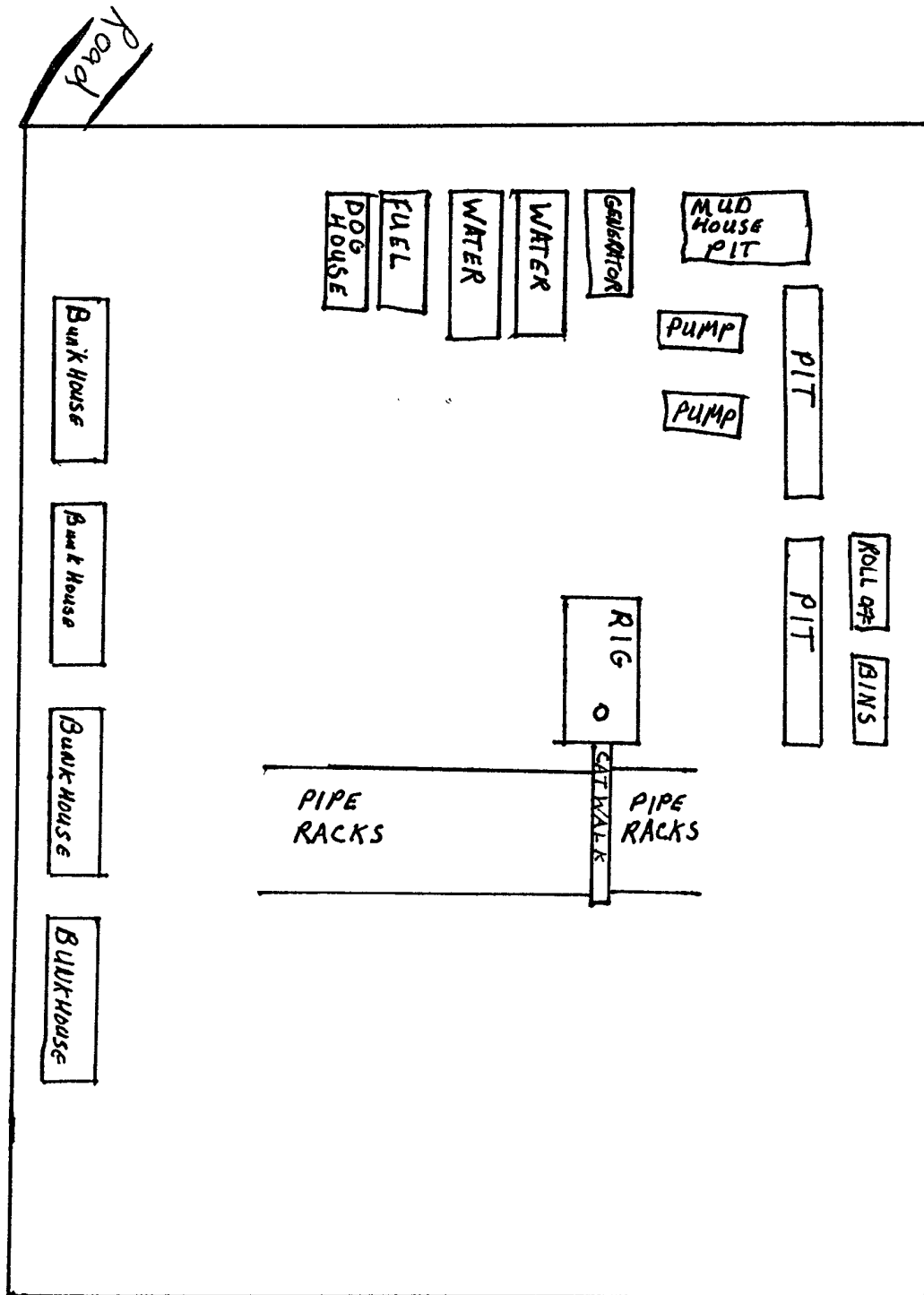
Name	MD [ft]	TVD [ft]	North [ft]	East [ft]	Grid East [srv ft]	Grid North [srv ft]	Latitude	Longitude	Shape
1) No. 1H PBHL	12649.31	8321.00	123.61	4656.65	664734.30	627539.60	32°43'26.609"N	103°47'51.628"W	point

SURVEY PROGRAM Ref Wellbore: No. 1H PWB Ref Wellpath: Plan #1

Start MD [ft]	End MD [ft]	Positional Uncertainty Model	Log Name/Comment	Wellbore
18.00	12649.31	NaviTrak (Standard)		No. 1H PWB

Mewbourne Oil Company
Conchise "30" Federal Com #1H
710' FNL & 330' FWL
Sec 30, T18S, R32E

2



TOP SOIL

1"
50'

Exhibit #5

Mewbourne Oil Company
Conchise "30" Federal Com # 1H
710' FNL & 330' FWL
Sec 30, T 18S, R 32E

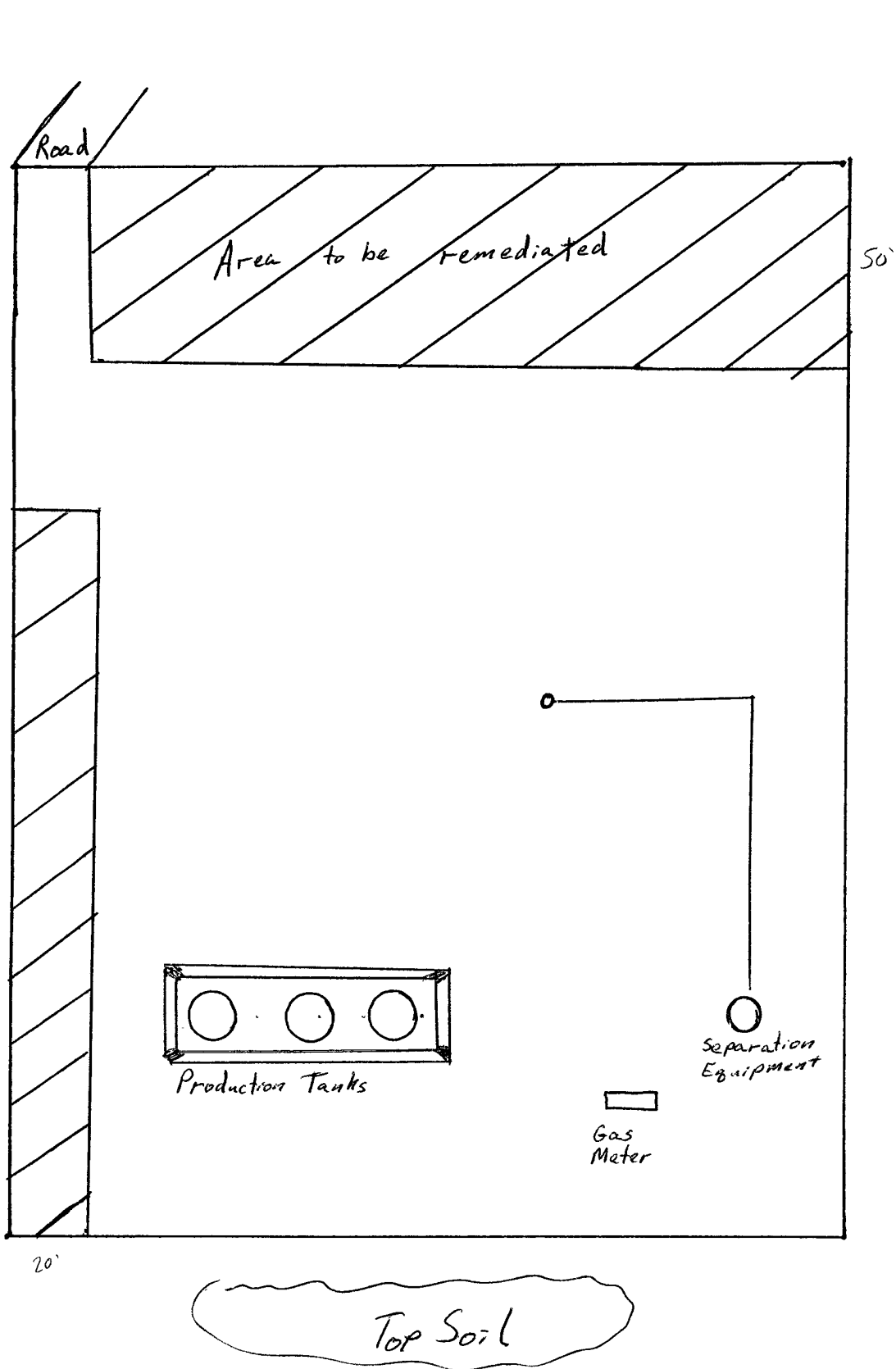


Exhibit #6

Notes Regarding Blowout Preventer

Mewbourne Oil Company

Cochise 30 Federal Com #1H

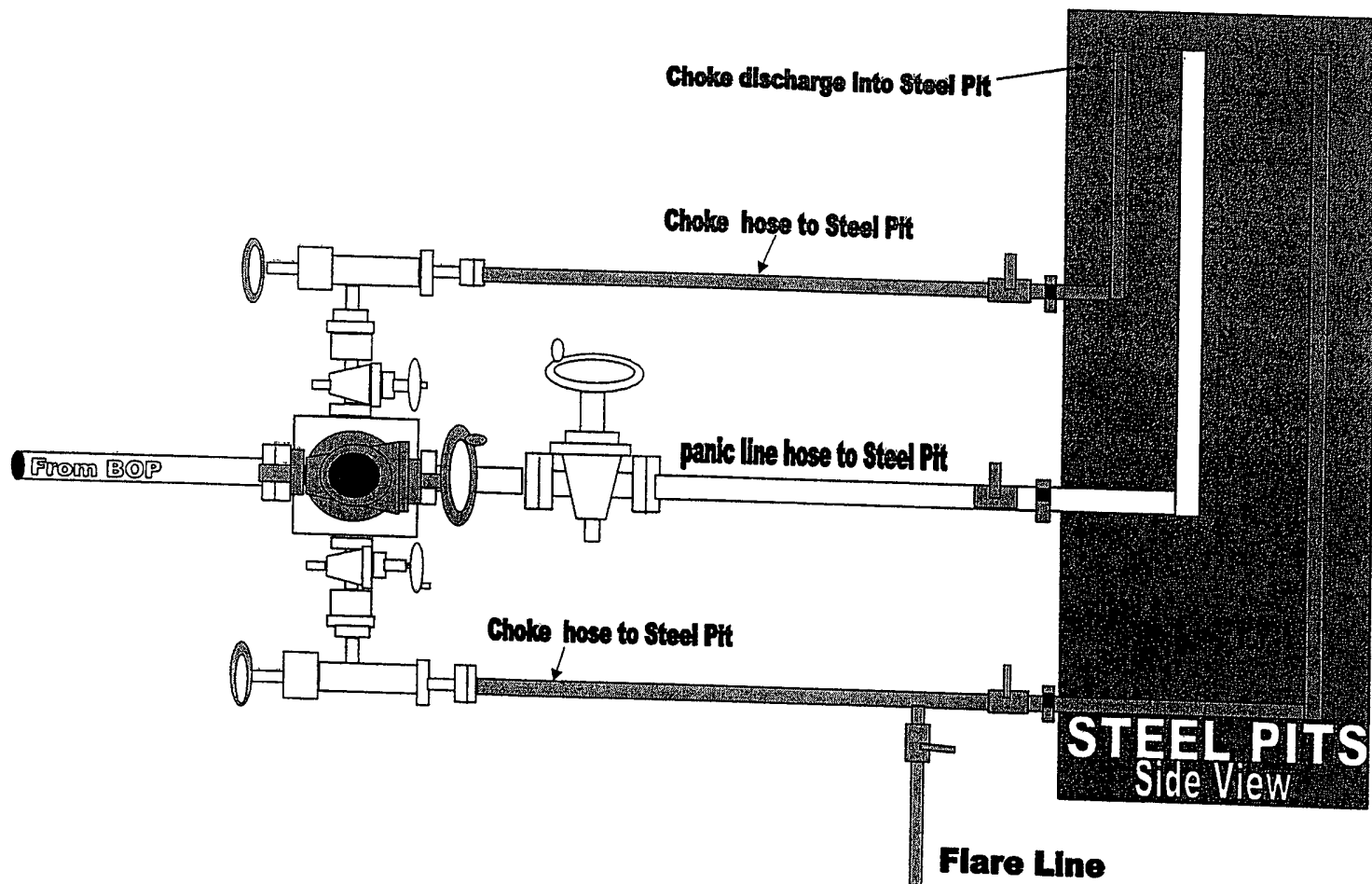
710' FNL & 330' FWL (SHL)

Sec 30-T18S-R32E

Lea County, New Mexico

- I. Drilling nipple (bell nipple) to be constructed so that it can be removed without the use of a welder through the opening of the rotary table, with minimum internal diameter equal to blowout preventer bore.
- II. Blowout preventer and all fittings must be in good condition with a minimum 2000 psi working pressure on 9 5/8" casing and 3000 psi working pressure on 7".
- III. Safety valve must be available on the rig floor at all times with proper connections to install in the drill string. Valve must be full bore with minimum 3000 psi working pressure.
- IV. Equipment through which bit must pass shall be at least as large as internal diameter of the casing.
- V. A kelly cock shall be installed on the kelly at all times.

Blowout preventer closing equipment to include and accumulator of at least 40 gallon capacity, two independent sources of pressure on closing unit, and meet all other API specifications.



2000#/3000#BOP manifold system

For Exhibit 2 + 2A

Mewbourne Oil Company
BOP Scematic for
12 1/4" Hole

Exhibit 2

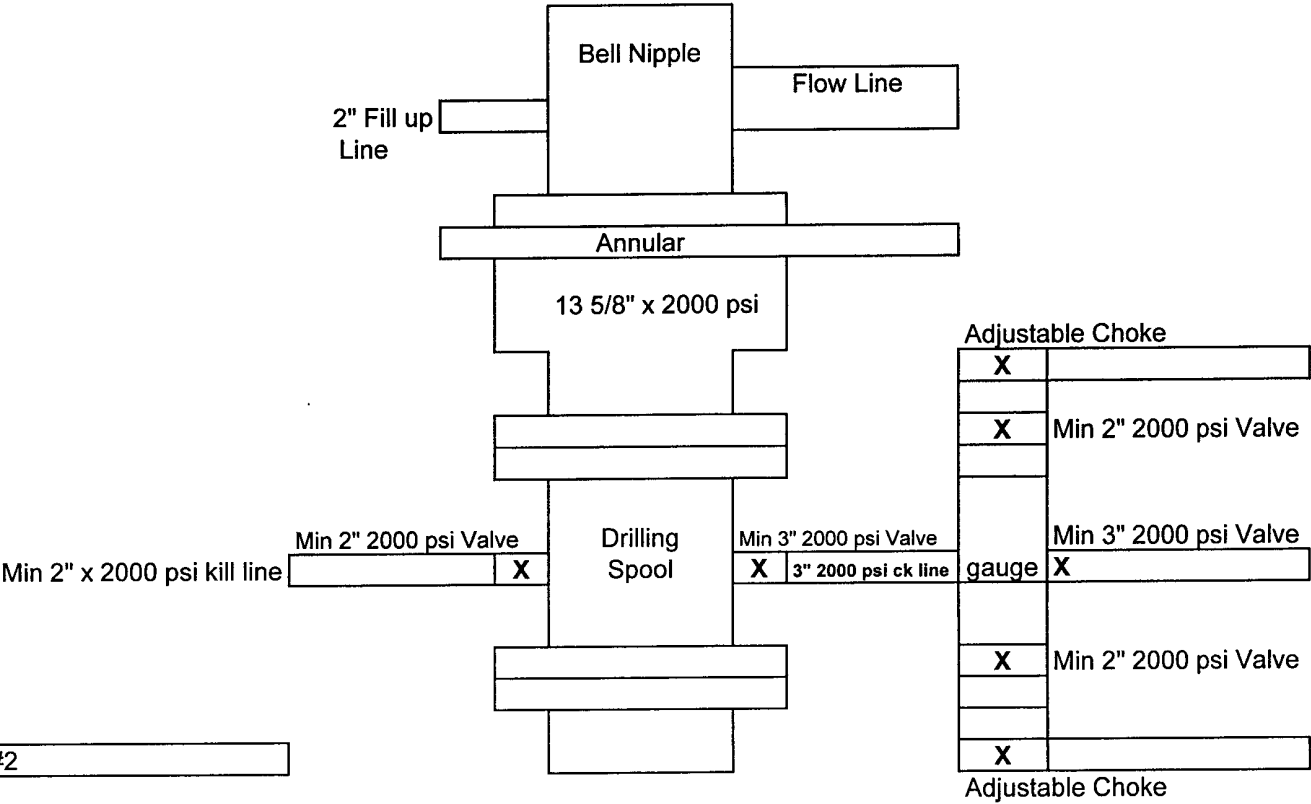


Exhibit #2

Conchise "30" Fed Com #1H
710' FNL & 330' FWL
Sec 30-T18S-R32E
Lea, County
New Mexico

Mewbourne Oil Company
BOP Scematic for
8 3/4" ' Hole

Exhibit 2A

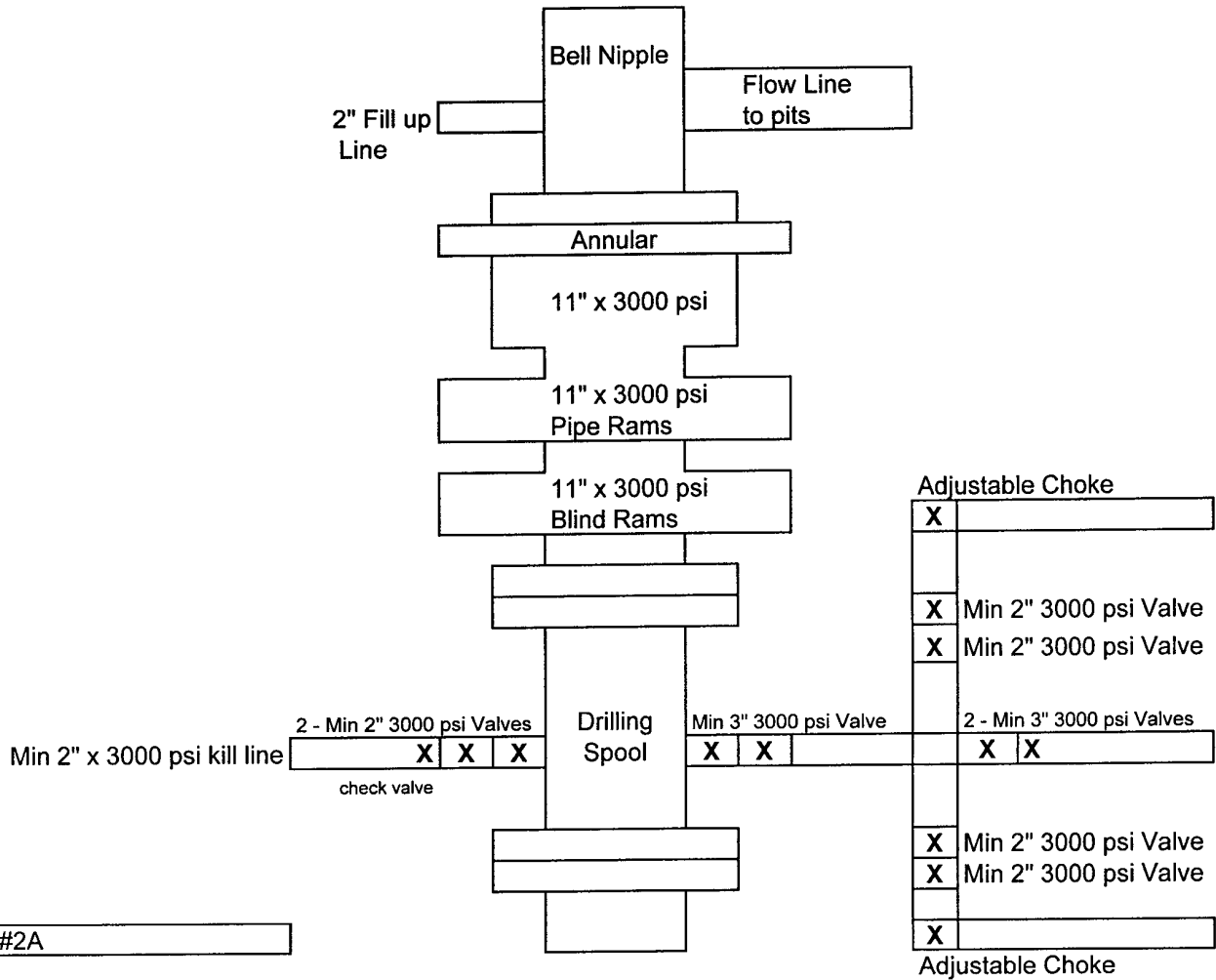


Exhibit #2A

Conchise "30" Fed Com #1H
710' FNL & 330' FWL
Sec 30-T18S-R32E
Lea County,
New Mexico