

DISTRICT I  
1625 N. French Dr., Hobbs, NM 88240

DISTRICT II  
1301 W. Grand Avenue, Artesia, NM 88210

DISTRICT III  
1000 Rio Brazos Rd., Aztec, NM 87410

DISTRICT IV  
1220 S. St. Francis Dr., Santa Fe, NM 87505

State of New Mexico

Geology, Minerals & Natural Resources Department

OIL CONSERVATION DIVISION

1220 South St. Frances Dr.

Santa Fe, NM 87505

Form C-102

Revised October 12, 2005

Submit to Appropriate District Office

State Lease - 4 Copies

Fee Lease - 3 Copies

RECEIVED

AUG 23 2010

HOBBSOCD

☐ AMENDED REPORT

WELL LOCATION AND ACREAGE DEDICATION PLAT

API Number 30-025-39514		Pool Code 62965	Pool Name WARREN; BLINEBRY-TUBB OIL & GAS
Property Code 31493	Property Name WARREN UNIT Blinebry-Tubb WF		Well Number 336
OGRID No. 217817	Operator Name CONOCOPHILLIPS		Elevation 3532'

Surface Location

UL or lot No.	Section	Township	Range	Lot Idn	Feet from the	North/South line	Feet from the	East/West line	County
C	34	20 S	38 E		60	NORTH	2630	WEST	LEA

Bottom Hole Location If Different From Surface

UL or lot No.	Section	Township	Range	Lot Idn	Feet from the	North/South line	Feet from the	East/West line	County
Dedicated Acres 40		Joint or Infill	Consolidation Code		Order No.				

NO ALLOWABLE WILL BE ASSIGNED TO THIS COMPLETION UNTIL ALL INTERESTS HAVE BEEN CONSOLIDATED OR A NON-STANDARD UNIT HAS BEEN APPROVED BY THE DIVISION

<div data-bbox="73 997 1096 2005"><p>27</p><p>2630</p><p>3531.9'</p><p>3533.1'</p><p>60'</p><p>3528.0</p><p>3530.9'</p><p>Plane Coordinate X = 869,013.1 Y = 560,957.4</p><p>34</p></div> <div data-bbox="73 1869 584 2005"><p>NOTE:</p><p>1) Plane Coordinates shown hereon are Transverse Mercator Grid and Conform to the "New Mexico Coordinate System", New Mexico East Zone, North American Datum of 1927. Distances shown hereon are mean horizontal surface values.</p></div>	<div data-bbox="1112 997 1550 2005"><p>OPERATOR CERTIFICATION</p><p>I hereby certify the information contained herein is true and complete to the best of my knowledge and belief, and that this organization either owns a working interest or undivided mineral interest in the land including the proposed bottom hole location or has a right to drill this well at this location pursuant to a contract with an owner of such a mineral or working interest, or is a voluntary pooling agreement or a compulsory pooling order heretofore entered by the division.</p><p><i>J. N. Fiske</i> 8-10-10 Signature Date JALYN N. FISKE Printed Name</p><p>SURVEYOR CERTIFICATION</p><p>I hereby certify that the well location shown on this plat was plotted from field notes of actual surveys made by me or under my supervision and that the same is true and correct to the best of my belief.</p><p>December 2, 2008 Date of Survey</p><p>MACON McDONALD LVA Signature &amp; Seal of Professional Surveyor</p><p>NEW MEXICO 12185</p><p>W.D. MUM 2008-10-10 Certificate No. 12185</p></div>
---	---

DISTRICT I  
1625 N. French Dr., Hobbs, NM 88240

State of New Mexico  
Energy, Minerals & Natural Resources Department

Form C-102  
Revised October 12, 2005  
Submit to Appropriate District Office  
State Lease - 4 Copies  
Fee Lease - 3 Copies

DISTRICT II  
1301 W. Grand Avenue, Artesia, NM 88210

OIL CONSERVATION DIVISION

DISTRICT III  
1000 Rio Brazos Rd., Aztec, NM 87410

RECEIVED

1220 South St. Frances Dr.  
Santa Fe, NM 87505

DISTRICT IV  
1220 S. St. Francis Dr., Santa Fe, NM 87505

AUG 23 2010

☐ AMENDED REPORT

HOBBSOCD

WELL LOCATION AND ACREAGE DEDICATION PLAT

API Number <b>30-025-39514</b>	Pool Code <b>63080</b>	Pool Name <b>WARREN, DRINKARD</b>
Property Code <b>31443 31488</b>	Property Name <b>WARREN UNIT</b>	Well Number <b>336</b>
OGRID No. <b>217817</b>	Operator Name <b>CONOCOPHILLIPS</b>	Elevation <b>3532'</b>

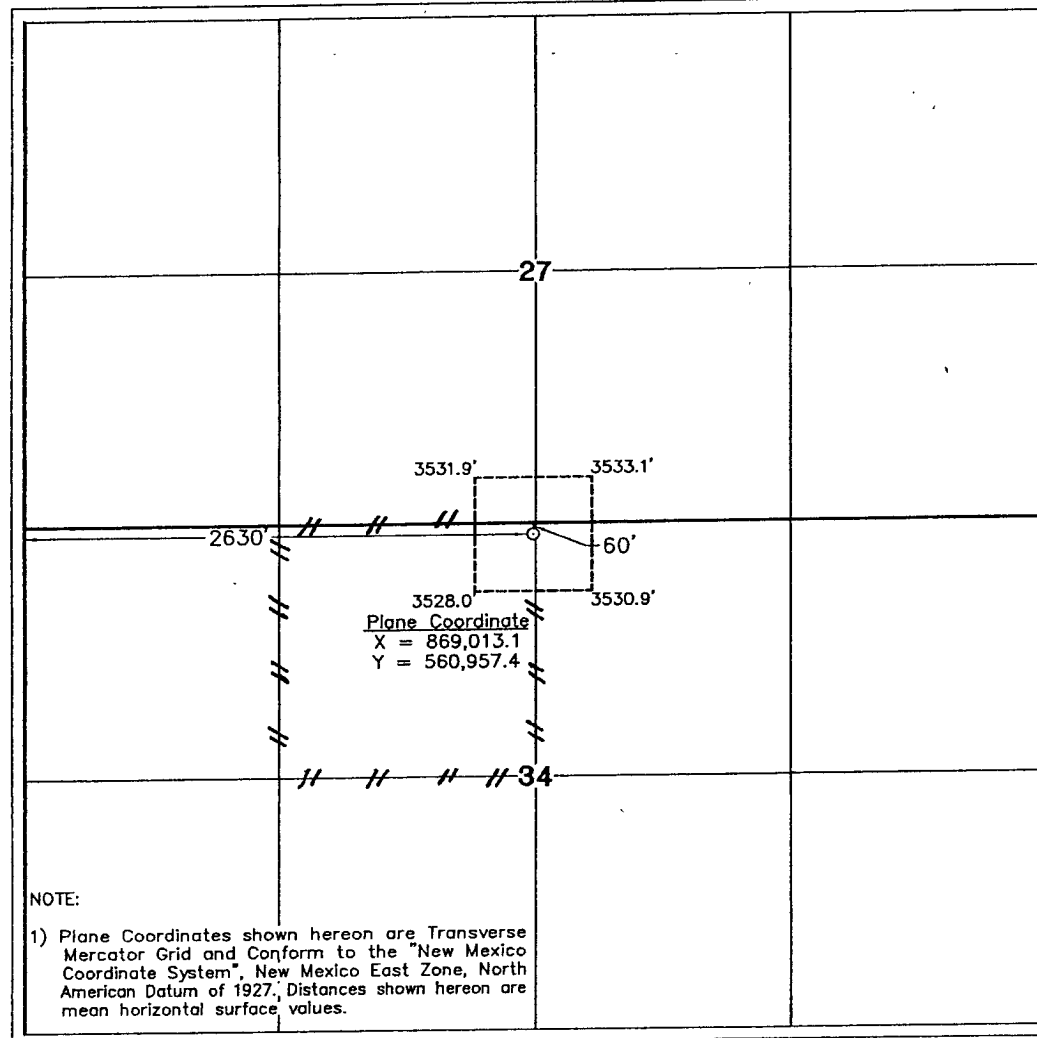
Surface Location

UL or lot No.	Section	Township	Range	Lot Idn	Feet from the	North/South line	Feet from the	East/West line	County
C	34	20 S	38 E		60	NORTH	2630	WEST	LEA

Bottom Hole Location If Different From Surface

UL or lot No.	Section	Township	Range	Lot Idn	Feet from the	North/South line	Feet from the	East/West line	County
Dedicated Acres <b>40</b>	Joint or Infill	Consolidation Code	Order No.						

NO ALLOWABLE WILL BE ASSIGNED TO THIS COMPLETION UNTIL ALL INTERESTS HAVE BEEN CONSOLIDATED OR A NON-STANDARD UNIT HAS BEEN APPROVED BY THE DIVISION



NOTE:

- 1) Plane Coordinates shown hereon are Transverse Mercator Grid and Conform to the "New Mexico Coordinate System", New Mexico East Zone, North American Datum of 1927. Distances shown hereon are mean horizontal surface values.

OPERATOR CERTIFICATION

I hereby certify the the information contained herein is true and complete to the best of my knowledge and belief, and that this organization either owns a working interest or unleased mineral interest in the land including the proposed bottom hole location or has a right to drill this well at this location pursuant to a contract with an owner of such a mineral or working interest, or to a voluntary pooling agreement or a compulsory pooling order heretofore entered by the division.

**J. N. Fiske** 8-10-10  
Signature Date  
**JALYN N. FISKE**  
Printed Name

SURVEYOR CERTIFICATION

I hereby certify that the well location shown on this plat was plotted from field notes of actual surveys made by me or under my supervision and that the same is true and correct to the best of my belief

December 2, 2008

Date of Survey  
Signature & Seal of Professional Surveyor LVA

**W. O. McDonald**  
12185  
Certificate No. 12185