

DISTRICT I
1625 N FRENCH DR., HOBBS, NM 88240

State of New Mexico

Energy, Minerals and Natural Resources Department

Form C-102

DISTRICT II
1301 W. GRAND AVENUE, ARTESIA, NM 88210

OIL CONSERVATION DIVISION
1220 SOUTH ST. FRANCIS DR.
Santa Fe, New Mexico 87505

Revised October 12, 2005
Submit to Appropriate District Office
State Lease - 4 Copies
Fee Lease - 3 Copies

DISTRICT III
1000 Rio Brazos Rd., Aztec, NM 87410

DISTRICT IV
1220 S ST FRANCIS DR., SANTA FE, NM 87505

WELL LOCATION AND ACREAGE DEDICATION PLAT

☐ AMENDED REPORT

API Number 30-025-39905	Pool Code 96764	Pool Name Monument Abo SE
Property Code 306624	Property Name WH LAUGHLIN	Well Number 12
OGRID No 873	Operator Name APACHE CORPORATION	Elevation 3550'

Surface Location

UL or lot No.	Section	Township	Range	Lot Idn	Feet from the	North/South line	Feet from the	East/West line	County
E	9	20-S	37-E		1650	NORTH	330	WEST	LEA

Bottom Hole Location If Different From Surface

UL or lot No.	Section	Township	Range	Lot Idn	Feet from the	North/South line	Feet from the	East/West line	County
Dedicated Acres 40	Joint or Infill	Consolidation Code	Order No.						

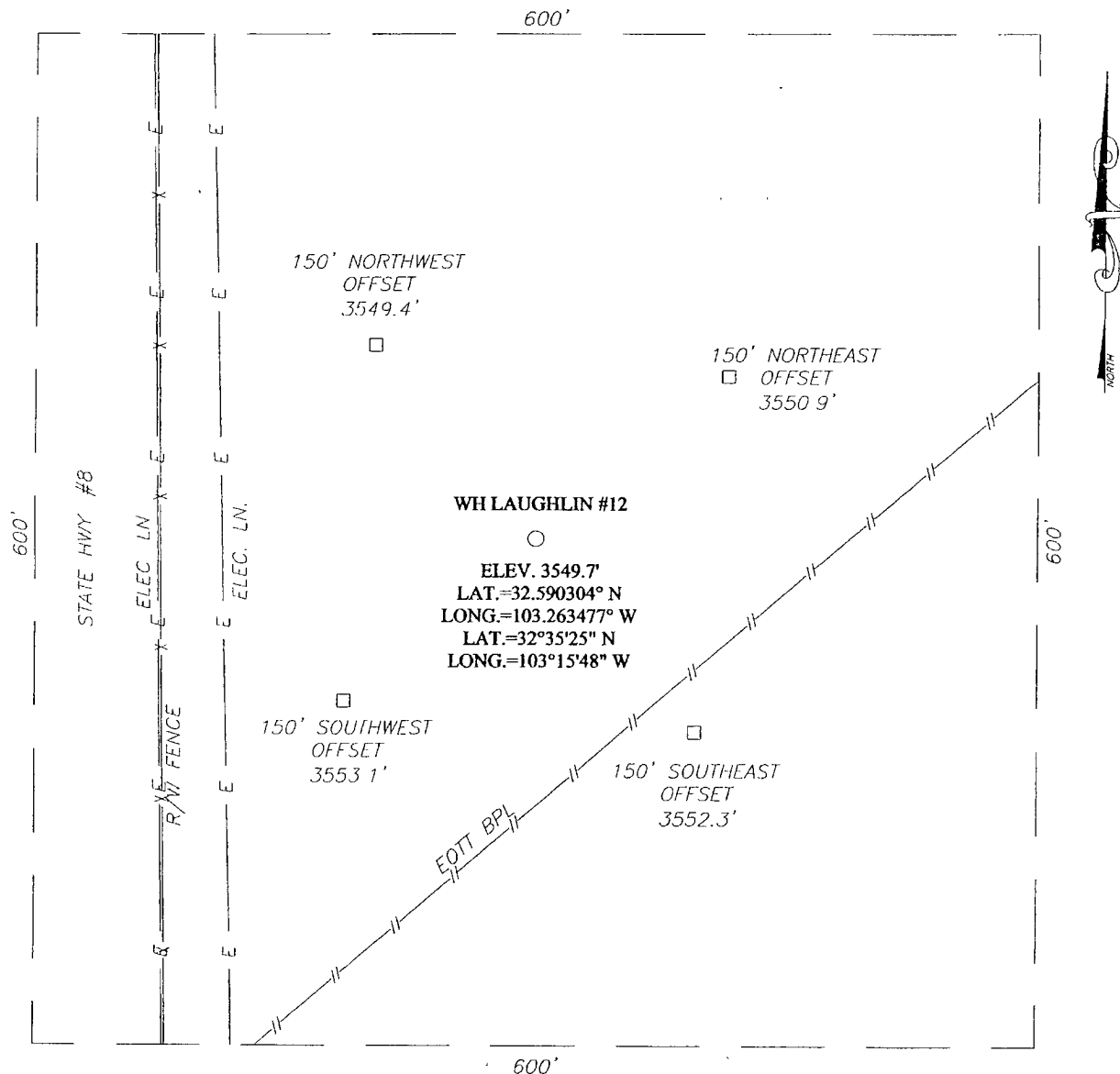
NO ALLOWABLE WILL BE ASSIGNED TO THIS COMPLETION UNTIL ALL INTERESTS HAVE BEEN CONSOLIDATED
OR A NON-STANDARD UNIT HAS BEEN APPROVED BY THE DIVISION

<p>Diagram showing well location with geodetic coordinates and surveyor certification.</p> <p>GEODETIC COORDINATES NAD 27 NME</p> <p>Y=580121.4 N X=829515.5 E</p> <p>LAT = 32.590304° N LONG = 103.263477° W LAT = 32°35'25" N LONG = 103°15'48" W</p> <p>Diagram showing well location with geodetic coordinates and surveyor certification.</p>	<p>OPERATOR CERTIFICATION</p> <p>I hereby certify that the information herein is true and complete to the best of my knowledge and belief, and that this organization either owns a working interest or unleased mineral interest in the land including the proposed bottom hole location or has a right to drill this well at this location pursuant to a contract with an owner of such mineral or working interest, or to a voluntary pooling agreement or a compulsory pooling order heretofore entered by the division</p> <p><i>Sherene Starr</i> 9-2010 Signature Date Sherene Starr Printed Name</p> <p>SURVEYOR CERTIFICATION</p> <p>I hereby certify that the well location shown on this plat was plotted from field notes of actual surveys made by me or under my supervision, and that the same is true and correct to the best of my belief.</p> <p>ALONSO EDISON 2010 Date Surveyed Signature & Seal of Professional Surveyor <i>Ronald Edison</i> 9/20/2010 Certificate No. RONALD EDISON 3239</p>
--	--

SECTION 9, TOWNSHIP 20 SOUTH, RANGE 37 EAST, N.M.P.M.,

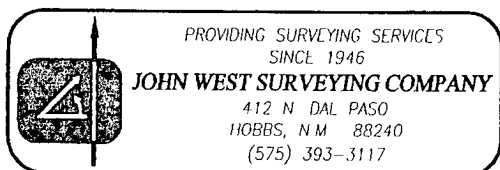
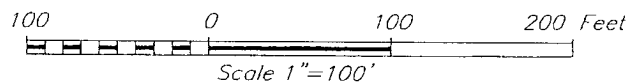
LEA COUNTY,

NEW MEXICO



DIRECTIONS TO LOCATION

FROM THE INTERSECTION OF HWY 8 AND CO. RD #322 (MONUMENT) GO SOUTH ON HWY #8 APPROX 2.4 MILES. TURN LEFT AND GO EAST APPROX 300 FEET THE LOCATION STAKE IS APPROX 200 FEET NORTH

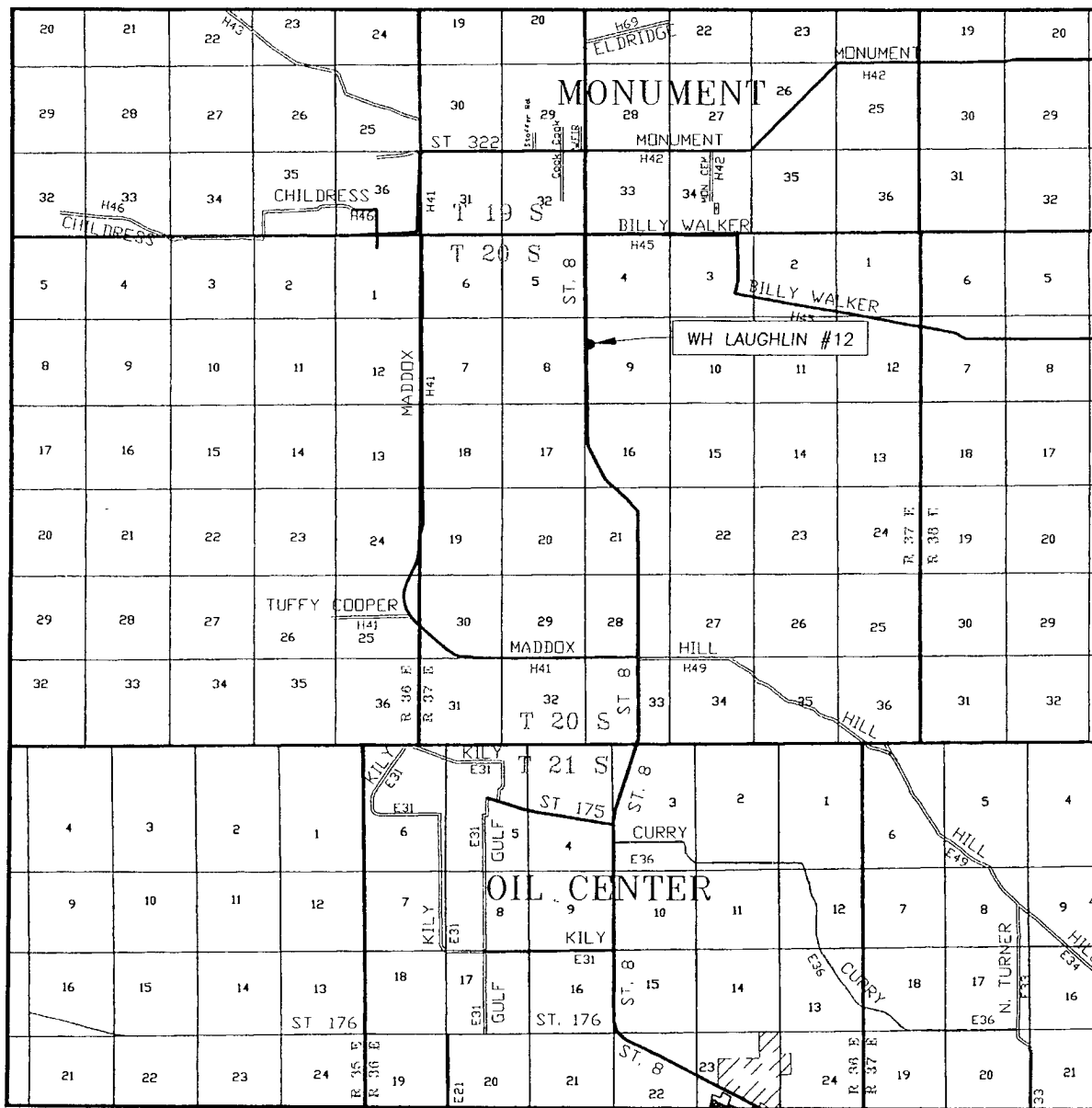


APACHE CORPORATION

VH LAUGHLIN #12
LOCATED 1650 FEET FROM THE NORTH LINE
AND 330 FEET FROM THE WEST LINE OF SECTION 9,
TOWNSHIP 20 SOUTH, RANGE 37 EAST, N.M.P.M.,
LEA COUNTY, NEW MEXICO.

Survey Date: 8/17/10	Sheet 1 of 1 Sheets
W.O Number 10.11.1242	Dr By: LA
Date: 8/24/10	10111242
	Scale: 1"=100'

VICINITY MAP



SCALE. 1" = 2 MILES

SEC. 9 TWP. 20-S RGE. 37-E

SURVEY N.M.P.M.

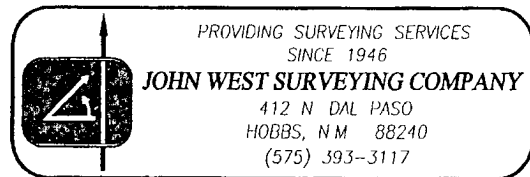
COUNTY LEA STATE NEW MEXICO

DESCRIPTION 1650' FNL & 330' FWL

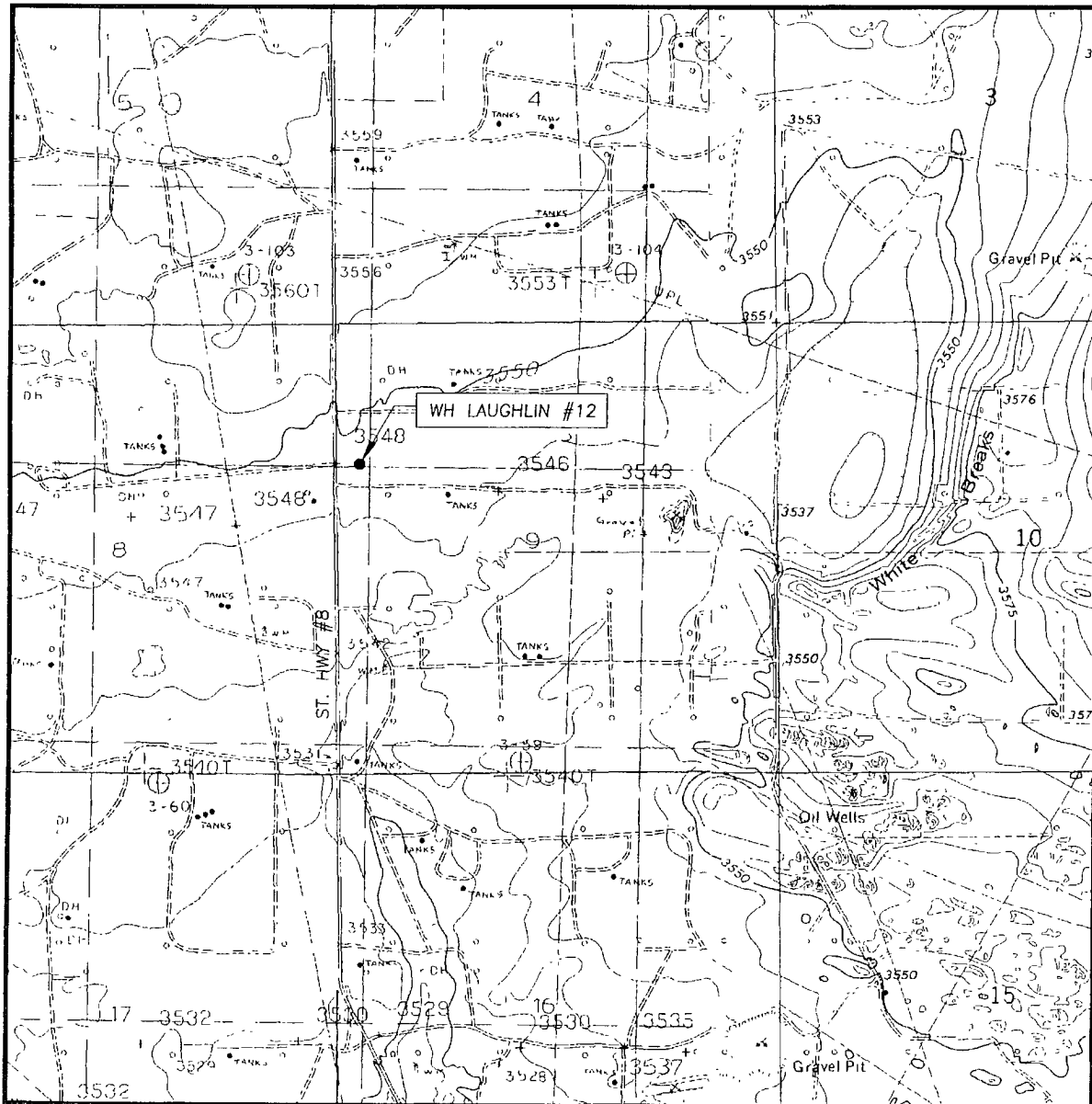
ELEVATION 3550'

OPERATOR APACHE CORPORATION

LEASE WH LAUGHLIN



LOCATION VERIFICATION MAP



SCALE: 1" = 2000'

CONTOUR INTERVAL:
HOBBS SW, N.M. - 5'
MONUMENT SOUTH, N.M. - 5'

SEC. 9 TWP. 20-S RGE 37-E

SURVEY _____ N.M.P.M.

COUNTY LEA STATE NEW MEXICO

DESCRIPTION 1650' FNL & 330' FWL

ELEVATION 3550'

OPERATOR APACHE CORPORATION

LEASE WH LAUGHLIN

U.S.G.S. TOPOGRAPHIC MAP
HOBBS SW, N.M.

