

RECEIVED

AUG 09 2010

District I
1625 N. French Dr., Hobbs, NM 88240
District II
1301 W. Grand Avenue, Artesia, NM 88210
District III
1000 Rio Brazos Rd., Aztec, NM 87410
District IV
1220 S. St. Francis Dr., Santa Fe, NM 87505

State of New Mexico
Energy, Minerals & Natural Resources Department
OIL CONSERVATION DIVISION
1220 South St. Francis Dr.
Santa Fe, NM 87505

HOBBSOCD

Form C-102

Revised October 12, 2005

Submit to Appropriate District Office

State Lease- 4 Copies

Fee Lease- 3 Copies

☐ AMENDED REPORT

WELL LOCATION AND ACREAGE DEDICATION PLAT

API Number 30-025-39702	Pool Code 51020	Pool Name 244-116; Bone Spring
Property Code 37858	Property Name LOMAS ROJAS "26" STATE COM	Well Number 3H
OGRID No. 7377	Operator Name EOG RESOURCES, INC.	Elevation 3326.8'

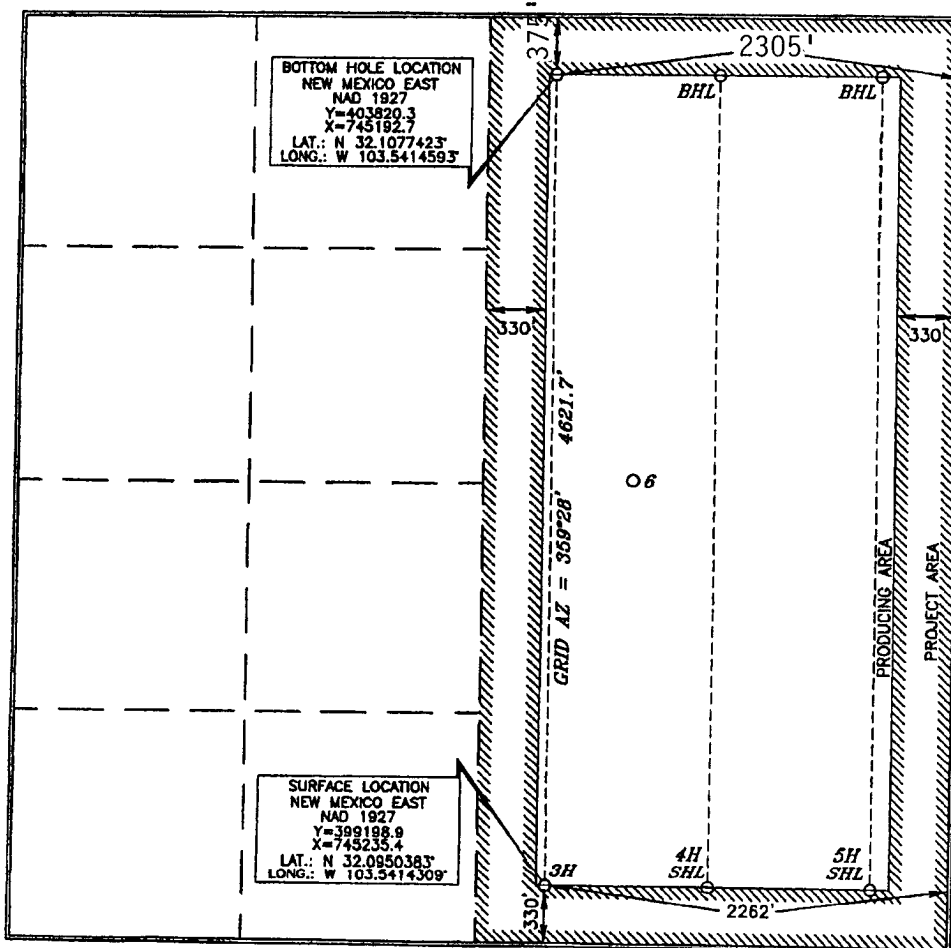
Surface Location

UL or lot no.	Section	Township	Range	Lot Idn	Feet from the	North/South line	Feet from the	East/West line	County
0	26	25 SOUTH	33 EAST, N.M.P.M.		330'	SOUTH	2262'	EAST	LEA

Bottom Hole Location if Different From Surface

UL or lot no.	Section	Township	Range	Lot Idn	Feet from the	North/South line	Feet from the	East/West line	County
B	26	25 SOUTH	33 EAST, N.M.P.M.		375'	NORTH	2305'	EAST	LEA
Dedicated Acres 320	Joint or Infill	Consolidation Code	Order No.	4905 S 2306					

No allowable will be assigned to this completion until all interests have been consolidated or a non-standard unit has been approved by the division.



OPERATOR CERTIFICATION

I hereby certify that the information contained herein is true and complete to the best of my knowledge and belief, and that this organization either owns a working interest or unleased mineral interest in the land including the proposed bottom hole location or has a right to drill this well at this location pursuant to a contract with an owner of such a mineral or working interest, or to a voluntary pooling agreement or a compulsory pooling order heretofore entered by the division.

Jim S. May 5/2/2010
Signature Date

Jim S. May
Printed Name

SURVEYOR CERTIFICATION

I hereby certify that the well location shown on this plat was located from field notes or actual survey made by me or under my supervision, and that the same is true and correct to the best of my belief.

James J. Asel 15079
Date of Survey

James J. Asel
Signature and Seal of Professional Surveyor

James J. Asel 4/29/2010
Certificate Number 15079

WO# 100316WL-a (Rev. A) (KA)