

ACCEPTED FOR RECORD

SEP 20 2010

Production Methods  
s/ Roger Hall

BUREAU OF LAND MANAGEMENT  
CARLSBAD FIELD OFFICE

## 28b. Production - Interval C

Date First Produced	Test Date	Hours Tested	Test Production →	Oil BBL	Gas MCF	Water BBL	Oil Gravity Corr. API	Gas Gravity	Production Method
Choke Size	Tbg. Press. Flwg. SI	Csg. Press.	24 Hr. Rate →	Oil BBL	Gas MCF	Water BBL	Gas/Oil Ratio	Well Status	

## 28c. Production - Interval D

Date First Produced	Test Date	Hours Tested	Test Production →	Oil BBL	Gas MCF	Water BBL	Oil Gravity Corr. API	Gas Gravity	Production Method
Choke Size	Tbg. Press. Flwg. SI	Csg. Press.	24 Hr. Rate →	Oil BBL	Gas MCF	Water BBL	Gas/Oil Ratio	Well Status	

## 29. Disposition of Gas (Solid, used for fuel, vented, etc.)

## 30. Summary of Porous Zones (Include Aquifers):

Show all important zones of porosity and contents thereof: Cored intervals and all drill-stem tests, including depth interval tested, cushion used, time tool open, flowing and shut-in pressures and recoveries.

## 31. Formation (Log) Markers

Formation	Top	Bottom	Descriptions, Contents, etc.	Name	Top
					Meas. Depth

## 32. Additional remarks (include plugging procedure):

Bureau of Land Management  
Original MIT submitted to OGD  
RECEIVED

AUG 25 2010

Carlsbad Field Office  
Carlsbad, N.M.

## 33. Indicate which items have been attached by placing a check in the appropriate boxes:

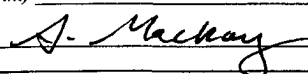
- ☐ Electrical/Mechanical Logs (1 full set req'd.)
 ☐ Geologic Report
 ☐ DST Report
 ☐ Directional Survey
- ☐ Sundry Notice for plugging and cement verification
 ☐ Core Analysis
 ☐ Other:

## 34. I hereby certify that the foregoing and attached information is complete and correct as determined from all available records (see attached instructions)\*

Name (please print) S Mackay

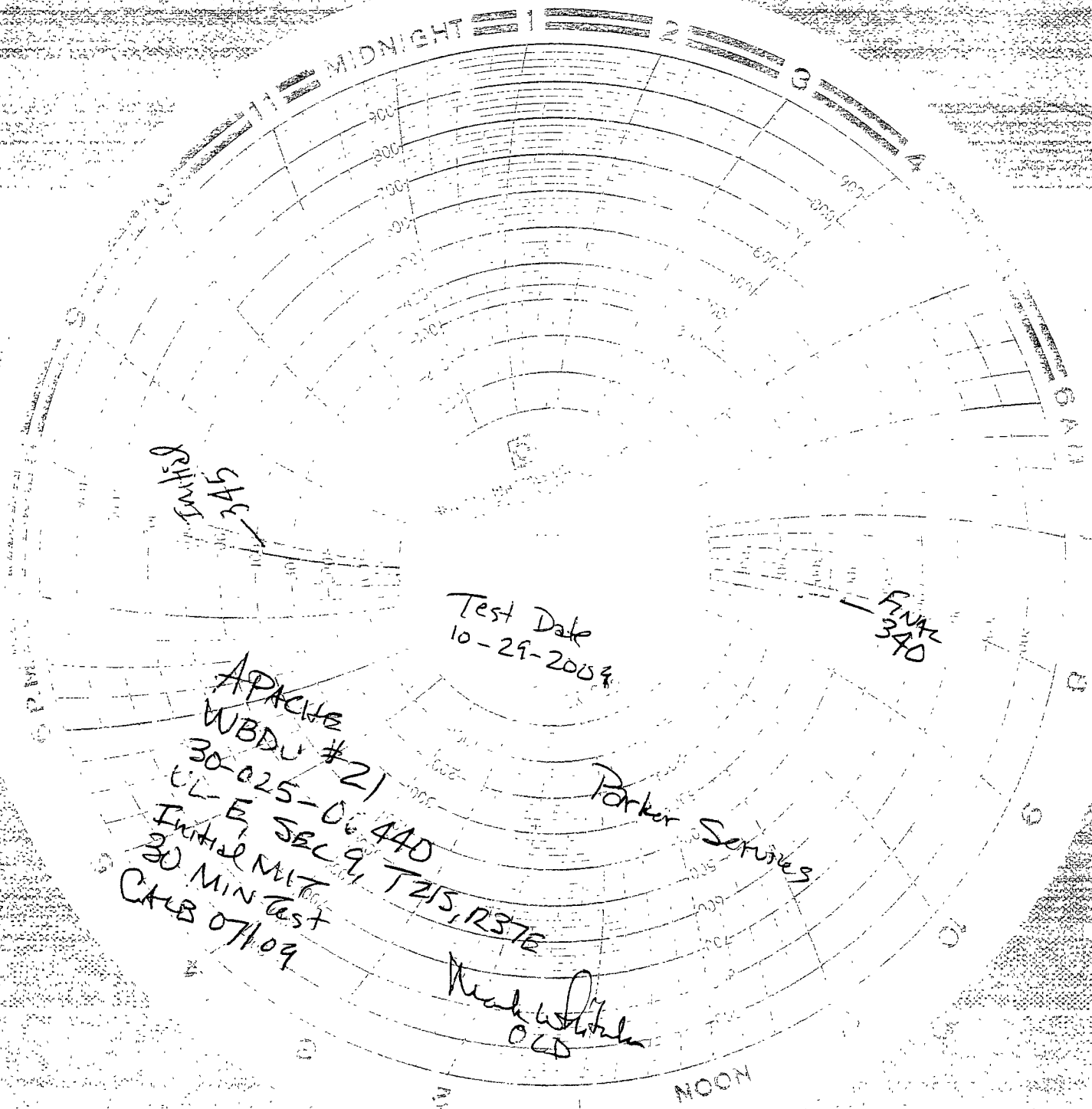
Title Engineering Tech

Signature



Date 03/05/2010

Title 18 U.S.C. Section 1001 and Title 43 U.S.C. Section 1212, make it a crime for any person knowingly and willfully to make to any department or agency of the United States any false, fictitious or fraudulent statements or representations as to any matter within its jurisdiction.



Initial  
345

Test Date  
10-29-2009

Final  
340

APACHE  
WBDU #21  
30-025-06440  
UL-E, SEC 9, TZ15, R37E  
Initial MIT  
30 MIN test  
CALS 07109

Parker Services

Michael White  
OLD

NOON