

DISTRICT I
1625 N FRENCH DR., HOBBS, NM 88240

DISTRICT II
1301 W. GRAND AVENUE, ARTESIA, NM 88210

DISTRICT III
1000 RIO BRAZOS RD., AZTEC, NM 87410

DISTRICT IV
11885 S. ST. FRANCIS DR., SANTA FE, NM 87505

State of New Mexico
Energy, Minerals and Natural Resources Department

OIL CONSERVATION DIVISION
11885 SOUTH ST. FRANCIS DR.
Santa Fe, New Mexico 87505

[Handwritten Signature]

Form C-102
Revised October 12, 2005
Submit to Appropriate District Office
State Lease - 4 Copies
Fee Lease - 3 Copies

WELL LOCATION AND ACREAGE DEDICATION PLAT

☐ AMENDED REPORT

API Number 30-025-39914	Pool Code 22900	Pool Name Eunice; Bli-Tu-Dri, North
Property Code 22503	Property Name NORTHEAST DRINKARD UNIT	Well Number 163
OGRID No. 873	Operator Name APACHE CORPORATION	Elevation 3480'

Surface Location

UL or lot No.	Section	Township	Range	Lot Idn	Feet from the	North/South line	Feet from the	East/West line	County
10	3	21-S	37-E		2650	NORTH	2030	EAST	LEA

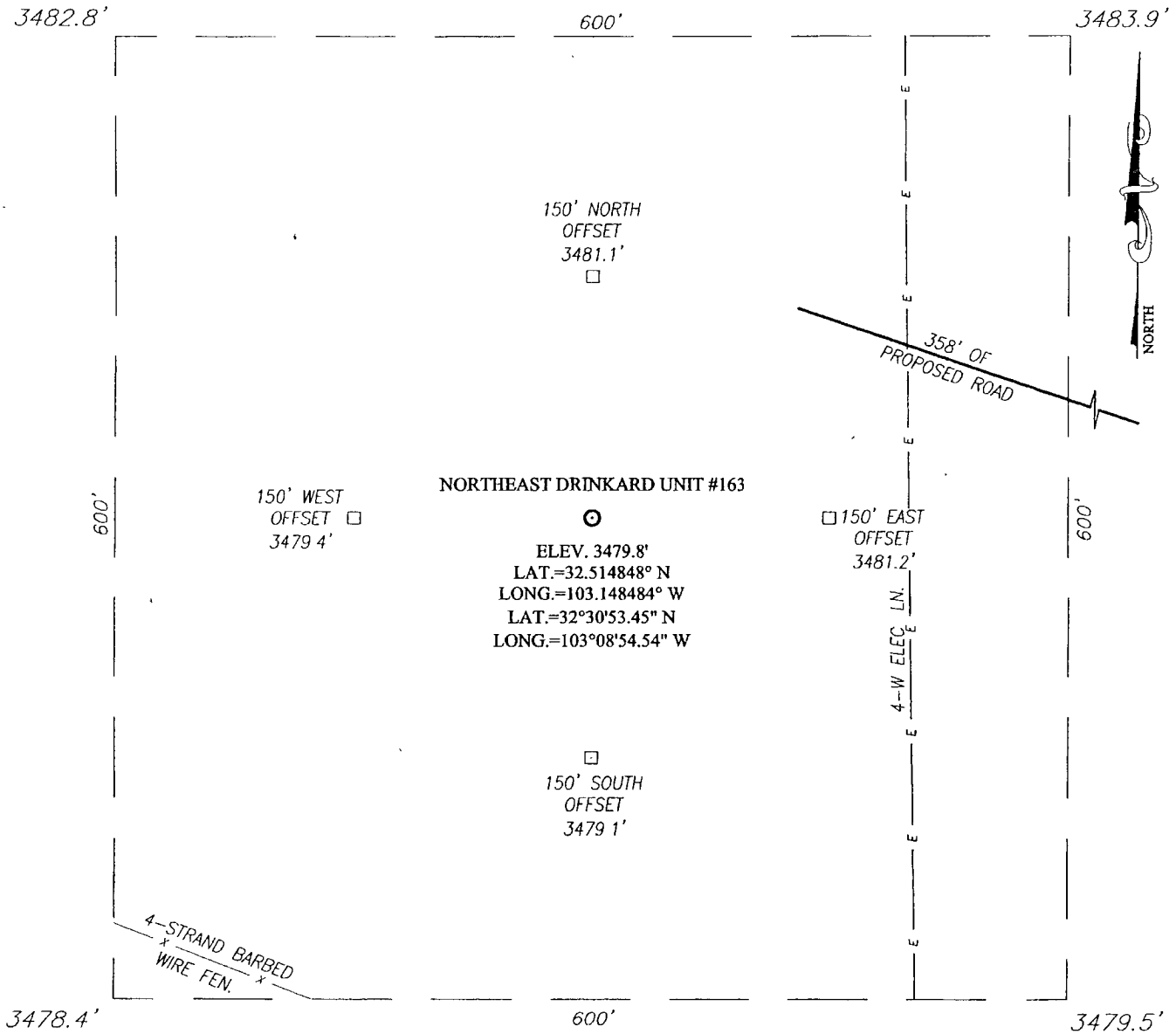
Bottom Hole Location If Different From Surface

UL or lot No.	Section	Township	Range	Lot Idn	Feet from the	North/South line	Feet from the	East/West line	County
Dedicated Acres 40	Joint or Infill	Consolidation Code	Order No.						

NO ALLOWABLE WILL BE ASSIGNED TO THIS COMPLETION UNTIL ALL INTERESTS HAVE BEEN CONSOLIDATED
OR A NON-STANDARD UNIT HAS BEEN APPROVED BY THE DIVISION

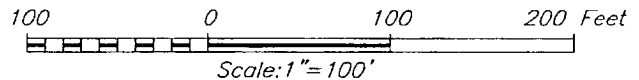
<p>GEODETIC COORDINATES NAD 27 NME SURFACE LOCATION</p> <p>Y=553044.5 N X=865241.0 E</p> <p>LAT.=32°51'48.48" N LONG.=103°14'48.48" W</p> <p>LAT.=32°30'53.45" N LONG.=103°08'54.54" W</p>		<p>OPERATOR CERTIFICATION</p> <p>I hereby certify that the information herein is true and complete to the best of my knowledge and belief, and that this organization either owns a working interest or unleased mineral interest in the land including the proposed bottom hole location or has a right to drill this well at this location pursuant to a contract with an owner of such mineral or working interest, or to a voluntary pooling agreement or a compulsory pooling order heretofore entered by the division</p> <p><i>[Signature]</i> 9/22/10 Signature Date Sorina L. Flores Printed Name</p>
	<p>SURVEYOR CERTIFICATION</p> <p>I hereby certify that the well location shown on this plat was plotted from field notes of actual surveys made by me or under my supervision, and that the same is true and correct to the best of my belief.</p> <p>RONALD J. EIDSON Date Surveyed Signature & Seal of Professional Surveyor 09/27/2010 Certificate No. 12641 DSS</p>	

SECTION 3, TOWNSHIP 21 SOUTH, RANGE 37 EAST, N.M.P.M.,
LEA COUNTY NEW MEXICO



DIRECTIONS TO LOCATION

FROM THE INTERSECTION CO. RD. #34 (HILL ROAD) AND ST. HWY. #207, GO NORTH-NORTHEAST ON ST. HWY. #207 APPROX. 1.4 MILES TO CATTLE GUARD #17. GO NORTHWEST APPROX. 0.25 MILES TO A "Y" IN ROAD. TAKE RIGHT FORK AND GO NORTH APPROX. 0.28 MILES VEER NORTHWEST AND GO APPROX 0.12 MILE. VEER NORTH AND GO APPROX. 0.2 MILES. TURN RIGHT AND GO EAST APPROX. 0.27 MILES TO A "Y" IN ROAD. VEER LEFT AND GO NORTHEAST APPROX. 0.13 MILES TO THE EXISTING NORTHEAST DRINKARD UNIT #125 WELL. FROM THE NORTHWEST CORNER OF THE EXISTING WELL PAD, FOLLOW PROPOSED ROAD SURVEY STAKES NORTHWEST APPROX. 358 FEET. THIS LOCATION STAKE IS APPROX. 184 FEET SOUTHWEST.



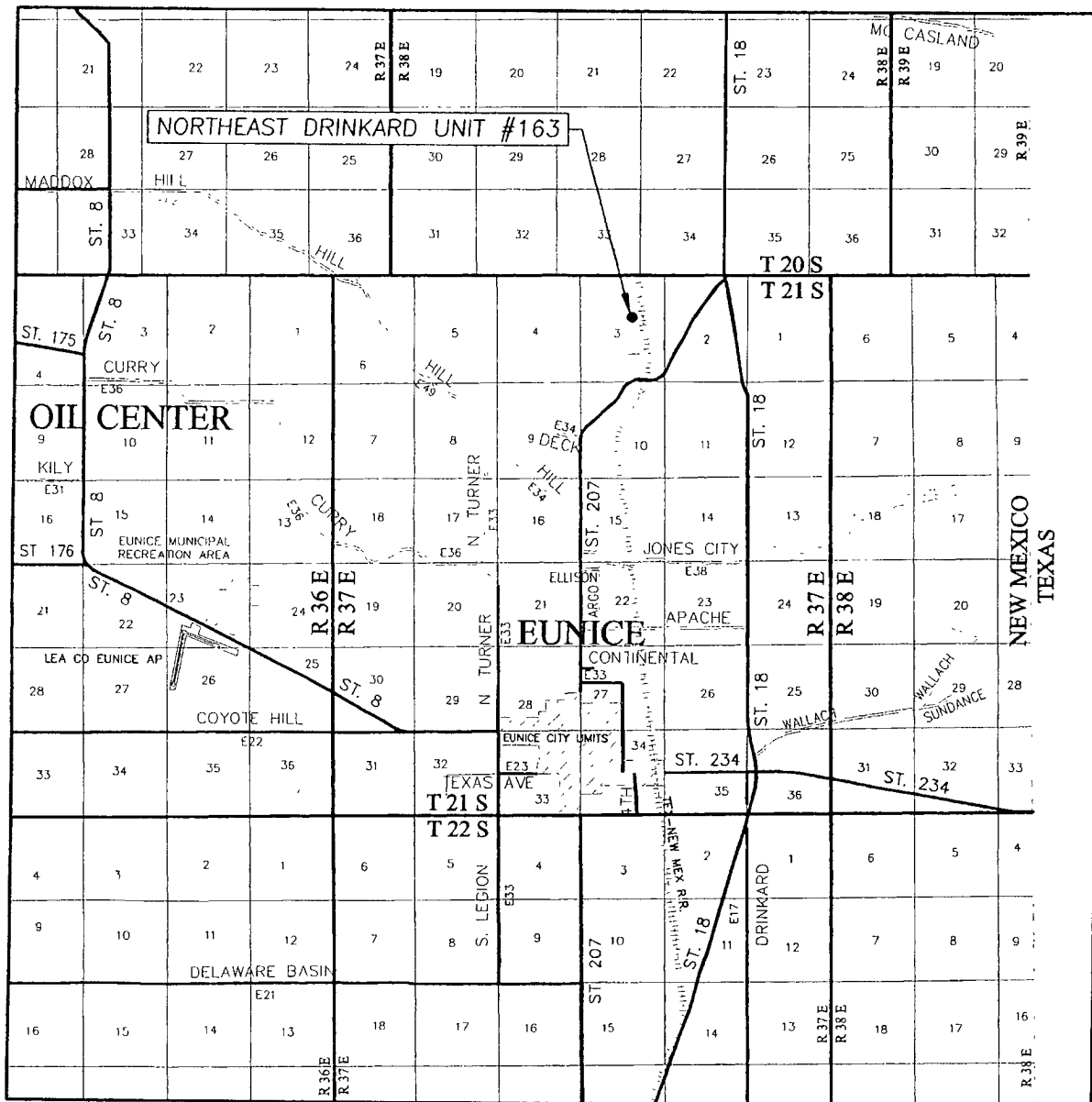
PROVIDING SURVEYING SERVICES
SINCE 1946
JOHN WEST SURVEYING COMPANY
412 N DAL PASO
HOBBS, N.M. 88240
(575) 393-3117

APACHE CORPORATION

NORTHEAST DRINKARD UNIT #163 WELL
LOCATED 2650 FEET FROM THE NORTH LINE
AND 2030 FEET FROM THE EAST LINE OF SECTION 3,
TOWNSHIP 21 SOUTH, RANGE 37 EAST, N.M.P.M.,
LEA COUNTY, NEW MEXICO.

Survey Date: 8/24/10	Sheet 1 of 1 Sheets
W.O. Number: 10.11.1267	Dr By: DSS
Date: 9/2/10	10111267
	Scale: 1"=100'

VICINITY MAP



SCALE: 1" = 2 MILES

SEC. 3 TWP. 21-S RGE. 37-E

SURVEY N.M.P.M.

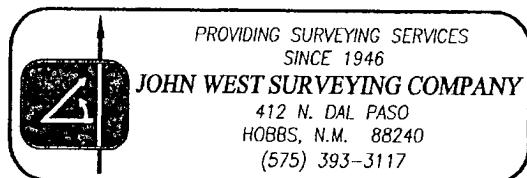
COUNTY LEA STATE NEW MEXICO

DESCRIPTION 2650' FNL & 2030' FEL

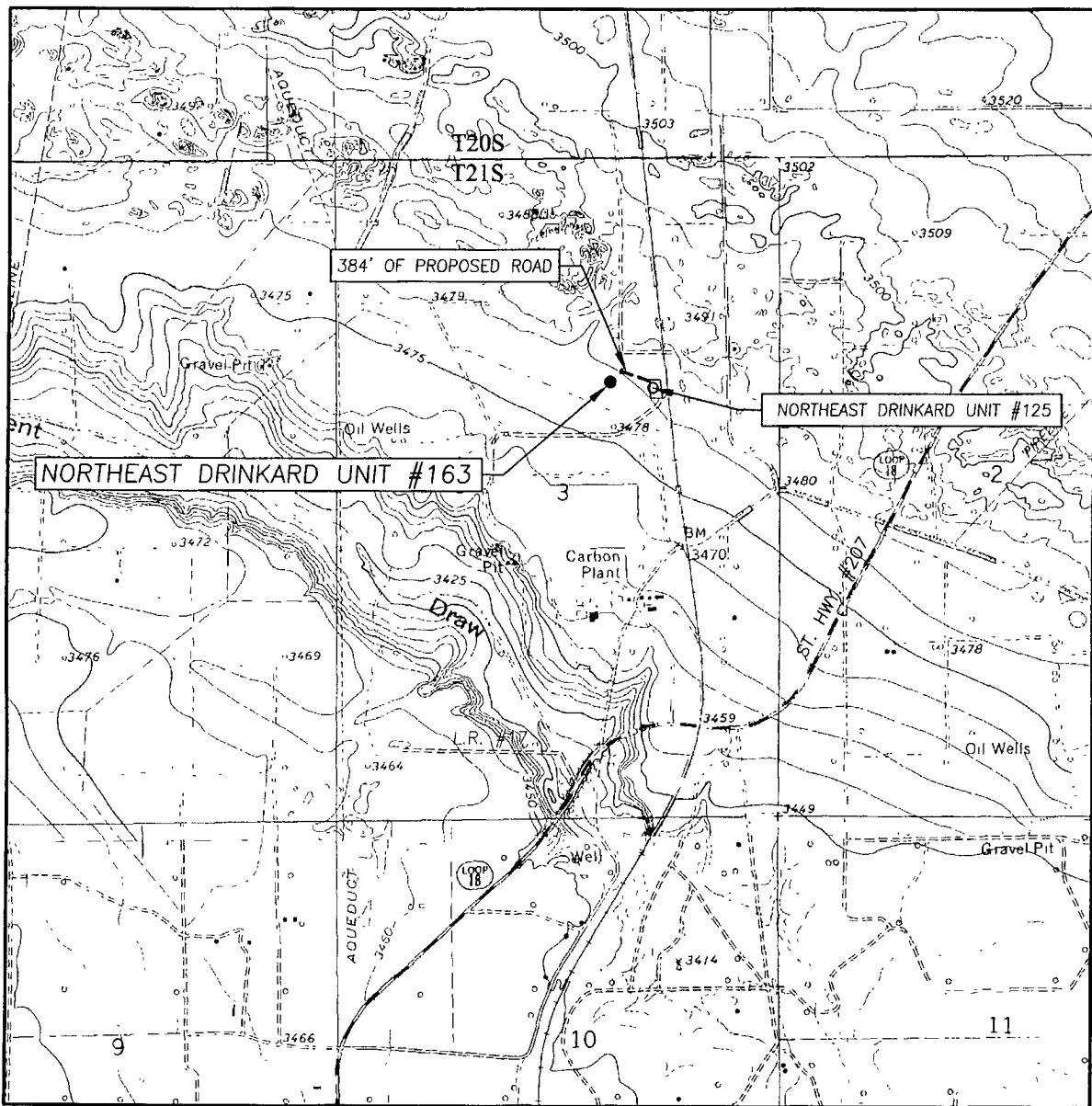
ELEVATION 3480'

OPERATOR APACHE CORPORATION

LEASE NORTHEAST DRINKARD UNIT



LOCATION VERIFICATION MAP



SCALE: 1" = 2000'

CONTOUR INTERVAL:
HOBBS SW, N.M. - 5'
EUNICE, N.M. - 10'

SEC. 3 TWP. 21-S RGE. 37-E

SURVEY N.M.P.M.

COUNTY LEA STATE NEW MEXICO

DESCRIPTION 2650' FNL & 2030' FEL

ELEVATION 3480'

OPERATOR APACHE CORPORATION

LEASE NORTHEAST DRINKARD UNIT

U.S.G.S. TOPOGRAPHIC MAP

HOBBS SW, N.M.

