

DISTRICT I
1625 N. FRENCH DR., HOBBS, NM 88240

DISTRICT II
1301 W. GRAND AVENUE, ARTESIA, NM 88210

DISTRICT III
1000 RIO BRAZOS RD., AZTEC, NM 87410

DISTRICT IV
11885 S. ST. FRANCIS DR., SANTA FE, NM 87505

State of New Mexico
Energy, Minerals and Natural Resources Department

OIL CONSERVATION DIVISION
11885 SOUTH ST. FRANCIS DR.
Santa Fe, New Mexico 87505

Form C-102

Revised October 12, 2005
Submit to Appropriate District Office
State Lease - 4 Copies
Fee Lease - 3 Copies

WELL LOCATION AND ACREAGE DEDICATION PLAT

☐ AMENDED REPORT

API Number 30-025-39917	Pool Code 22900	Pool Name Eunice; Bli-Tu-Dr, North
Property Code 22503	Property Name NORTHEAST DRINKARD UNIT	Well Number 167
OGRID No. 873	Operator Name APACHE CORPORATION	Elevation 3495'

Surface Location

UL or lot No. 5	Section 2	Township 21-S	Range 37-E	Lot Idn	Feet from the 2545	North/South line NORTH	Feet from the 660	East/West line WEST	County LEA
---------------------------	---------------------	-------------------------	----------------------	---------	------------------------------	----------------------------------	-----------------------------	-------------------------------	----------------------

Bottom Hole Location If Different From Surface

UL or lot No.	Section	Township	Range	Lot Idn	Feet from the	North/South line	Feet from the	East/West line	County
Dedicated Acres 40		Joint or Infill	Consolidation Code	Order No					

NO ALLOWABLE WILL BE ASSIGNED TO THIS COMPLETION UNTIL ALL INTERESTS HAVE BEEN CONSOLIDATED
OR A NON-STANDARD UNIT HAS BEEN APPROVED BY THE DIVISION

D4 LOT 4	C3 LOT 3	B2 LOT 2	A1 LOT 1	
	37.42 AC D5 LOT 5	37.32 AC C6 LOT 6	37.24 AC B7 LOT 7	37.14 AC A8 LOT 8
	660' 40.00 AC D12 LOT 12	40.00 AC C11 LOT 11	40.00 AC B10 LOT 10	40.00 AC A9 LOT 9
	40.00 AC E LOT 13	40.00 AC F LOT 14	40.00 AC G LOT 15	40.00 AC H LOT 16
40.00 AC L	40.00 AC K	40.00 AC J	40.00 AC I	
M	N	O	P	

GEODETIC COORDINATES
NAD 27 NME
SURFACE LOCATION

Y=553178.4 N
X=867929.3 E

LAT.=32°51'34" N
LONG.=103°13'54.8" W

LAT.=32°30'54.48" N
LONG.=103°08'23.13" W

SCALE: 1"=2000'

OPERATOR CERTIFICATION

I hereby certify that the information herein is true and complete to the best of my knowledge and belief, and that this organization either owns a working interest or unleased mineral interest in the land including the proposed bottom hole location or has a right to drill this well at this location pursuant to a contract with an owner of such mineral or working interest, or to a voluntary pooling agreement or a compulsory pooling order heretofore entered by the division.

Sorina L Flores 9/22/10
Signature Date

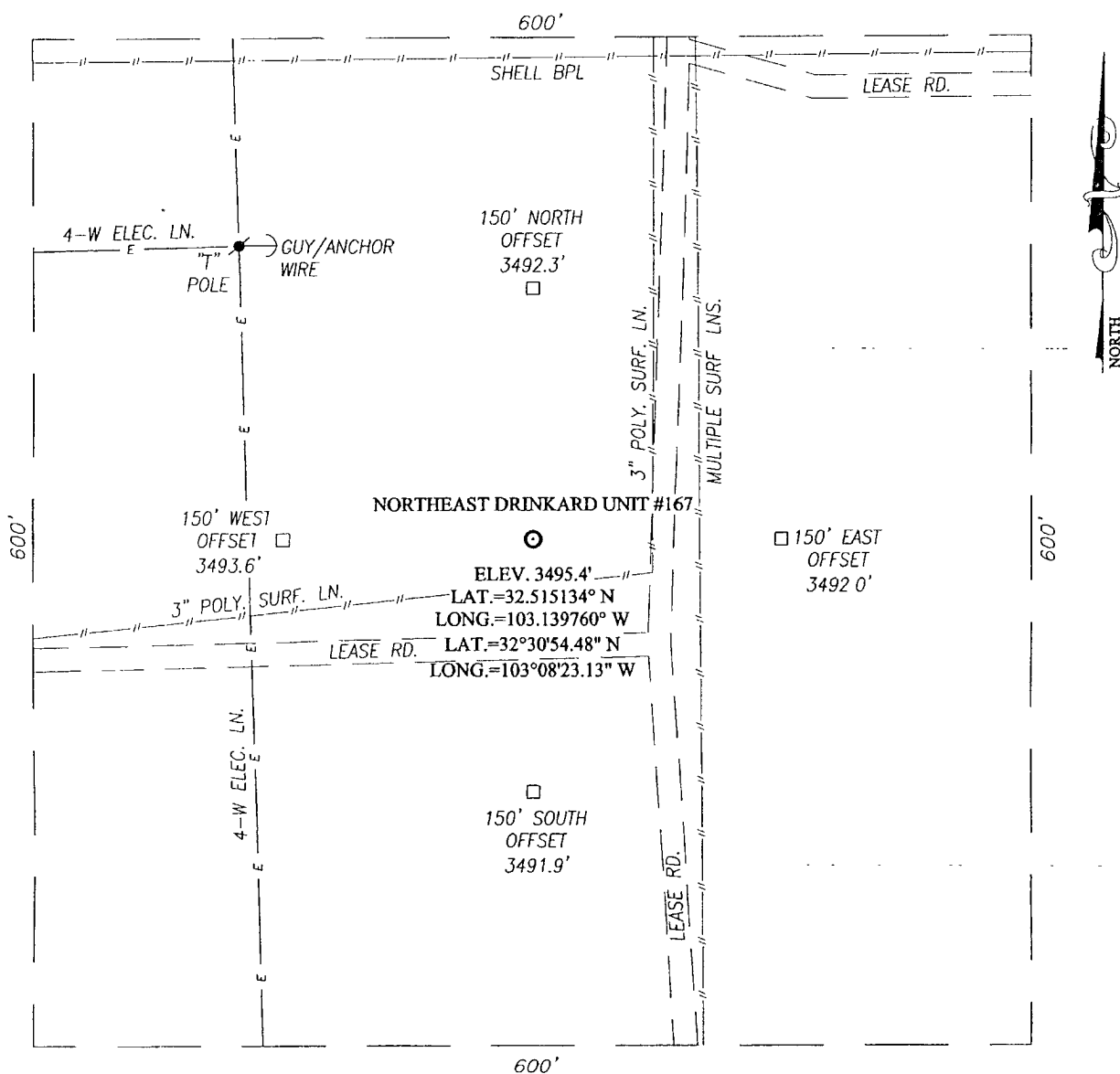
Sorina L. Flores
Printed Name

SURVEYOR CERTIFICATION

I hereby certify that the well location shown on this plat was plotted from field notes of actual surveys made by me or under my supervision, and that the same is true and correct to the best of my belief.

AUG 2010
Date Surveyed
Signature & Seal of Professional Surveyor
Professional Surveyor
Certificate No. 12641
RONALD J. EIDSON 3239

SECTION 2, TOWNSHIP 21 SOUTH, RANGE 37 EAST, N.M.P.M.,
LEA COUNTY NEW MEXICO



DIRECTIONS TO LOCATION

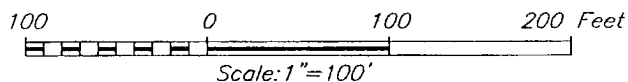
FROM THE INTERSECTION ST. HWY. #18 AND ST. HWY. #207,
GO SOUTHWEST ON ST. HWY. #207 APPROX. 1.0 MILES TO
CATTLE GUARD #22. TURN RIGHT AND GO NORTHWEST APPROX.
700 FEET. TURN RIGHT AND GO NORTH APPROX. 0.3 MILES.
THIS LOCATION STAKE IS APPROX. 75 FEET WEST OF LEASE
ROAD.



PROVIDING SURVEYING SERVICES
SINCE 1946

JOHN WEST SURVEYING COMPANY

412 N. DAL PASO
HOBBS, N.M. 88240
(575) 393-3117

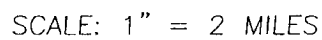


APACHE CORPORATION

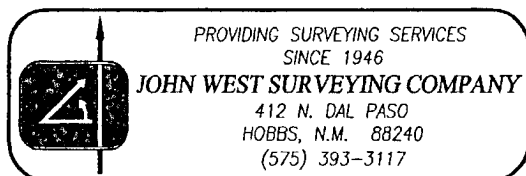
NORTHEAST DRINKARD UNIT #167 WELL
LOCATED 2545 FEET FROM THE NORTH LINE
AND 660 FEET FROM THE WEST LINE OF SECTION 2,
TOWNSHIP 21 SOUTH, RANGE 37 EAST, N.M.P.M.,
LEA COUNTY, NEW MEXICO.

Survey Date: 8/27/10	Sheet 1 of 1 Sheets
W.O. Number: 10.11.1263	Dr By: DSS
Date: 9/2/10	10111263
	Scale: 1"=100'

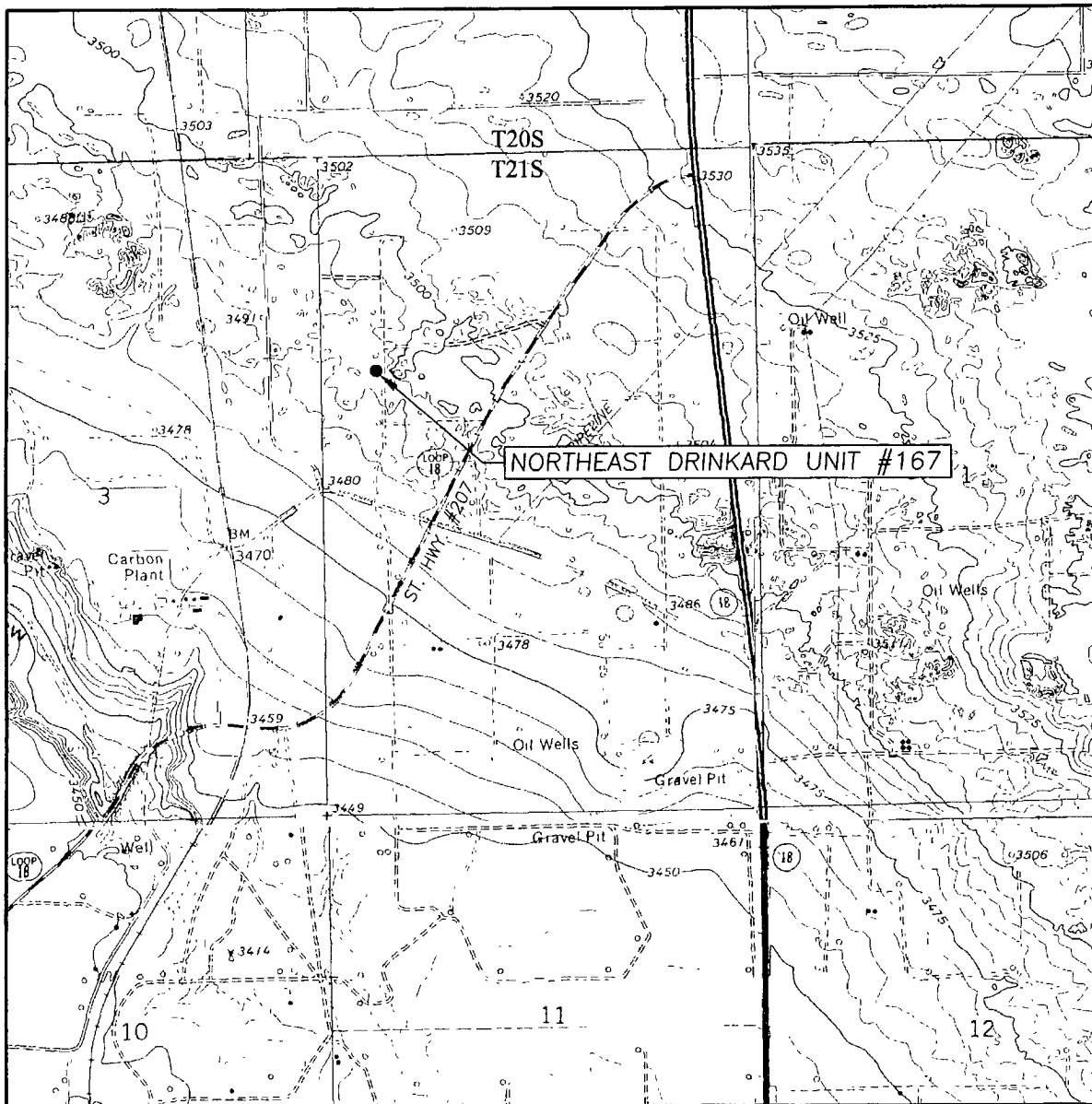
NORTH



SEC. 2 TWP. 21-S RGE. 37-E
SURVEY _____ N.M.P.M. _____
COUNTY LEA STATE NEW MEXICO
DESCRIPTION 2545' FNL & 660' FWL
ELEVATION _____ 3495' _____
OPERATOR APACHE CORPORATION
LEASE NORTHEAST DRINKARD UNIT



LOCATION VERIFICATION MAP



SCALE: 1" = 2000'

SEC. 2 TWP. 21-S RGE. 37-E

SURVEY N.M.P.M.

COUNTY LEA STATE NEW MEXICO

DESCRIPTION 2545' FNL & 660' FWL

ELEVATION 3495'

OPERATOR APACHE CORPORATION

LEASE NORTHEAST DRINKARD UNIT

U.S.G.S. TOPOGRAPHIC MAP

HOBBS SW, N.M.

CONTOUR INTERVAL:

EUNICE, N.M. - 10'

EUNICE NE, N.M. - 10'

HOBBS SW, N.M. - 5'

HOBBS SE, N.M. - 5'



PROVIDING SURVEYING SERVICES
SINCE 1946

JOHN WEST SURVEYING COMPANY

412 N. DAL PASO

HOBBS, N.M. 88240

(575) 393-3117