

DISTRICT I
1625 N FRENCH DR., HOBBS, NM 88240

DISTRICT II
1301 W. GRAND AVENUE, ARTESIA, NM 88210

DISTRICT III
1000 RIO BRAZOS RD., AZTEC, NM 87410

DISTRICT IV
11885 S. ST. FRANCIS DR., SANTA FE, NM 87505

State of New Mexico
Energy, Minerals and Natural Resources Department

OIL CONSERVATION DIVISION
11885 SOUTH ST. FRANCIS DR.
Santa Fe, New Mexico 87505

Form C-102

Revised October 12, 2005
Submit to Appropriate District Office
State Lease - 4 Copies
Fee Lease - 3 Copies

WELL LOCATION AND ACREAGE DEDICATION PLAT

☐ AMENDED REPORT

API Number 30-025-39918	Pool Code 22900	Pool Name Eunice; Bli - Tu - Dri, North
Property Code 22503	Property Name NORTHEAST DRINKARD UNIT	Well Number 168 168
OGRID No. 873	Operator Name APACHE CORPORATION	Elevation 3501'

Surface Location

UL or lot No.	Section	Township	Range	Lot Ida	Feet from the	North/South line	Feet from the	East/West line	County
5	2	21-S	37-E		1970	NORTH	1125	WEST	LEA

Bottom Hole Location If Different From Surface

UL or lot No.	Section	Township	Range	Lot Ida	Feet from the	North/South line	Feet from the	East/West line	County
Dedicated Acres 40		Joint or Infill	Consolidation Code	Order No.					

NO ALLOWABLE WILL BE ASSIGNED TO THIS COMPLETION UNTIL ALL INTERESTS HAVE BEEN CONSOLIDATED
OR A NON-STANDARD UNIT HAS BEEN APPROVED BY THE DIVISION

<p>GEODETIC COORDINATES NAD 27 NME SURFACE LOCATION</p> <p>Y=553758.6 N X=868387.5 E</p> <p>LAT.=32.516714' N LONG.=103.138252' W</p> <p>LAT.=32°31'00.17" N LONG.=103°08'17.71" W</p>	D4 LOT 4	C3 LOT 3	B2 LOT 2	A1 LOT 1
	37.42 AC D5 LOT 5	37.32 AC C6 LOT 6	37.24 AC B7 LOT 7	37.14 AC A8 LOT 8
	40.00 AC D12 LOT 12	40.00 AC C11 LOT 11	40.00 AC B10 LOT 10	40.00 AC A9 LOT 9
	40.00 AC E LOT 13	40.00 AC F LOT 14	40.00 AC G LOT 15	40.00 AC H LOT 16
	40.00 AC L	40.00 AC K	40.00 AC J	40.00 AC I
	40.00 AC M	40.00 AC N	40.00 AC O	40.00 AC P
	SCALE: 1"=2000'			
	D4 LOT 4 D5 LOT 5 D12 LOT 12 E LOT 13 L			
	C3 LOT 3 C6 LOT 6 C11 LOT 11 F LOT 14 K			
	B2 LOT 2 B7 LOT 7 B10 LOT 10 G LOT 15 J			
A1 LOT 1 A8 LOT 8 A9 LOT 9 H LOT 16 I				

OPERATOR CERTIFICATION

I hereby certify that the information herein is true and complete to the best of my knowledge and belief, and that this organization either owns a working interest or unleased mineral interest in the land including the proposed bottom hole location or has a right to drill this well at this location pursuant to a contract with an owner of such mineral or working interest, or to a voluntary pooling agreement or a compulsory pooling order heretofore entered by the division.

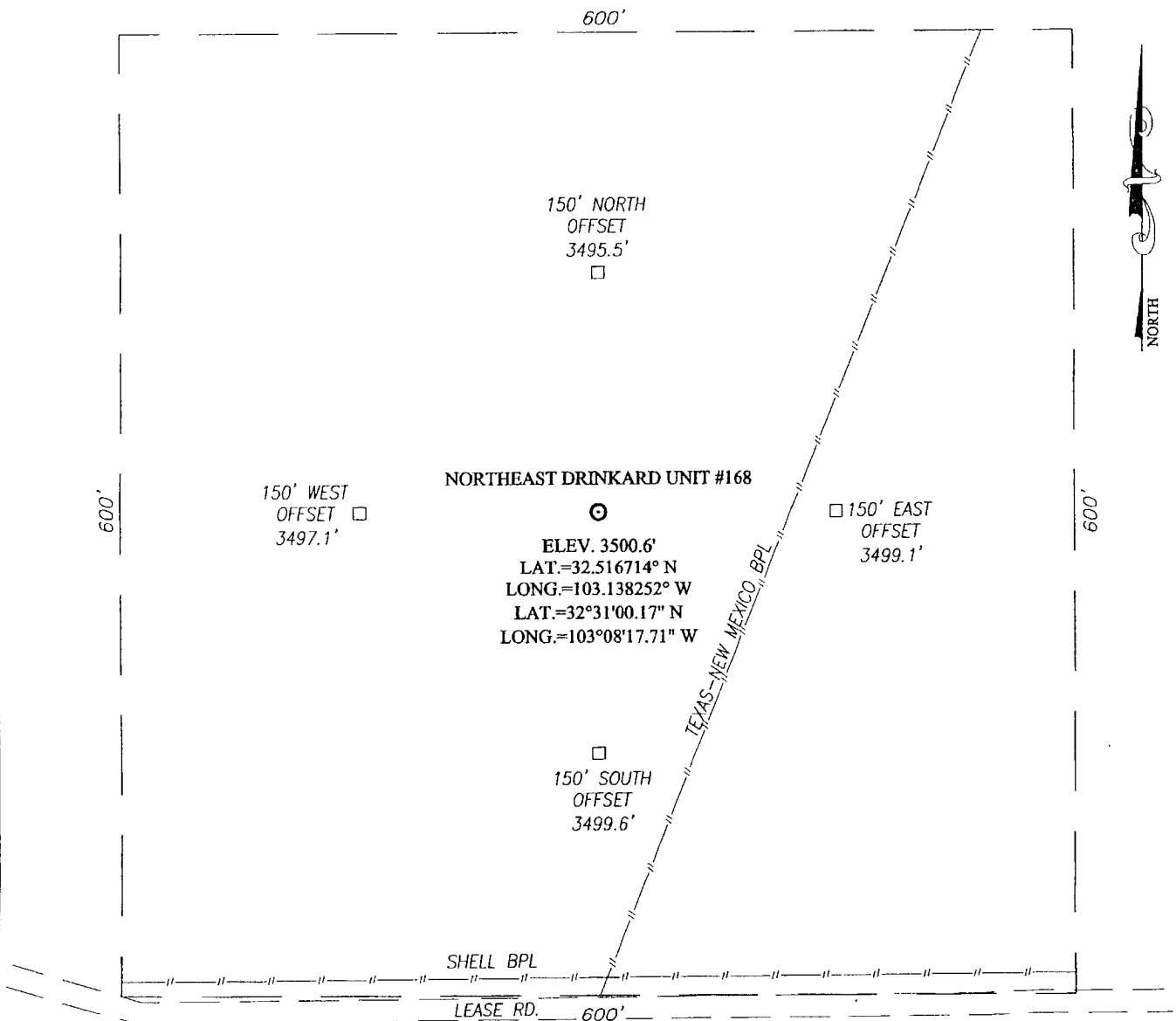
Sorina L. Flores 9/22/10
Signature Date
Sorina L. Flores
Printed Name

SURVEYOR CERTIFICATION

I hereby certify that the well location shown on this plat was plotted from field notes of actual surveys made by me or under my supervision, and that the same is true and correct to the best of my belief.

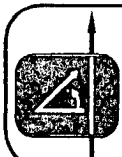
ALCUSTIDSON
Date Surveyed
Signature & Seal of Professional Surveyor
3239
RONALD J. EIDSON 09/27/2010
Certificate No. GARY G. EIDSON 12641
RONALD J. EIDSON 3239

SECTION 2, TOWNSHIP 21 SOUTH, RANGE 37 EAST, N.M.P.M.,
LEA COUNTY NEW MEXICO

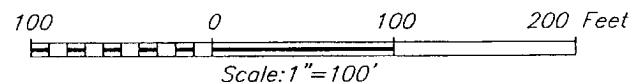


DIRECTIONS TO LOCATION

FROM THE INTERSECTION ST. HWY. #18 AND ST. HWY. #207, GO SOUTHWEST ON ST. HWY. #207 APPROX. 0.5 MILES TO CATTLE GUARD #26. TURN RIGHT AND GO WEST APPROX. 0.3 MILES. THIS LOCATION STAKE IS APPROX. 330 FEET NORTH OF LEASE ROAD.



PROVIDING SURVEYING SERVICES
SINCE 1946
JOHN WEST SURVEYING COMPANY
412 N. DAL PASO
HOBBS, N.M. 88240
(575) 393-3117

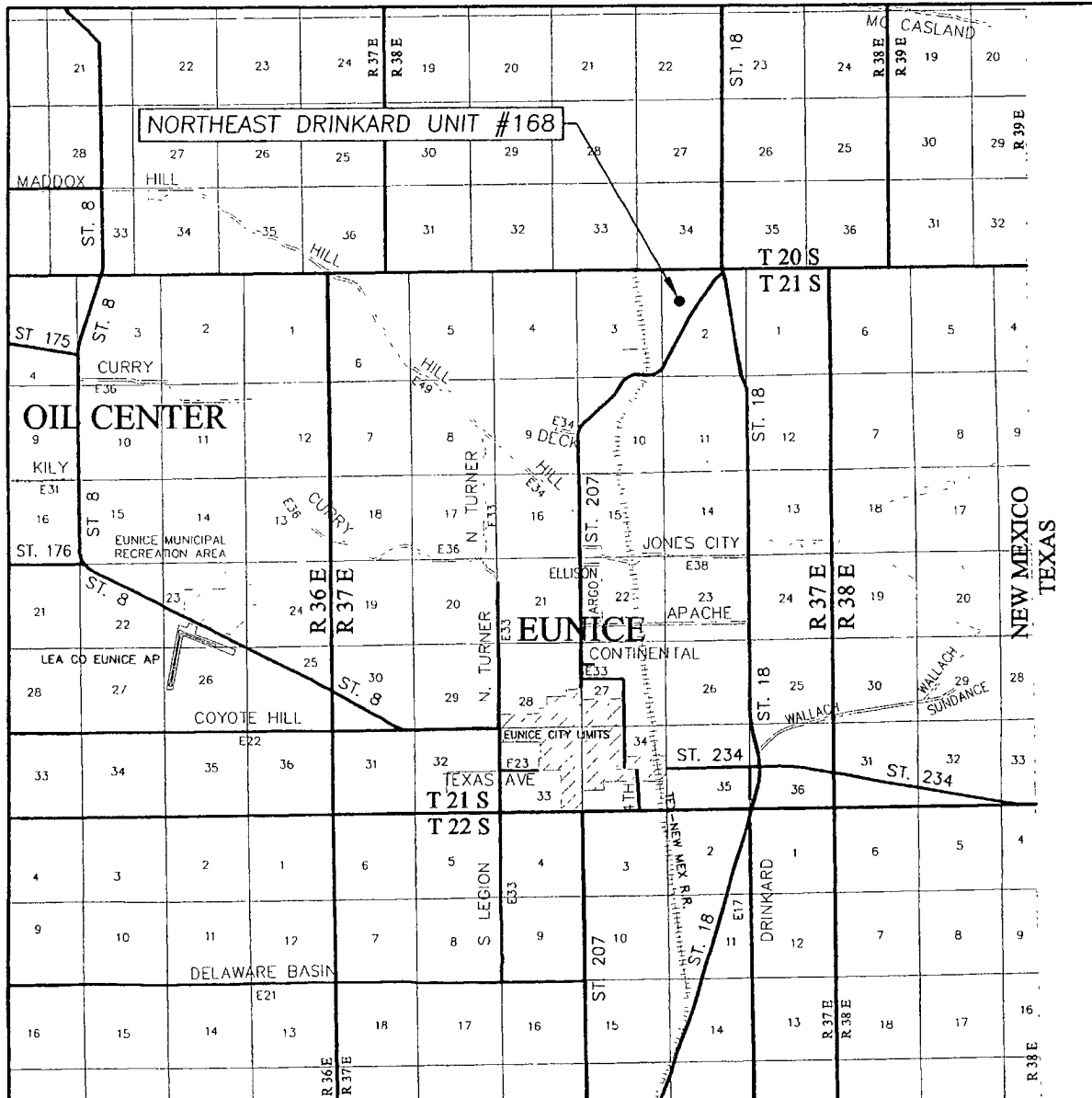


APACHE CORPORATION

NORTHEAST DRINKARD UNIT #168 WELL
LOCATED 1970 FEET FROM THE NORTH LINE
AND 1125 FEET FROM THE WEST LINE OF SECTION 2,
TOWNSHIP 21 SOUTH, RANGE 37 EAST, N.M.P.M.,
LEA COUNTY, NEW MEXICO.


Survey Date: 8/27/10	Sheet 1 of 1 Sheets
W.O. Number: 10.11.1262	Dr By: DSS
Date: 9/2/10	10111262
	Scale: 1"=100'

VICINITY MAP



SCALE: 1" = 2 MILES

SEC. 2 TWP. 21-S RGE. 37-E
 SURVEY N.M.P.M.
 COUNTY LEA STATE NEW MEXICO
 DESCRIPTION 1970' FNL & 1125' FWL
 ELEVATION 3501'
 OPERATOR APACHE CORPORATION
 LEASE NORTHEAST DRINKARD UNIT

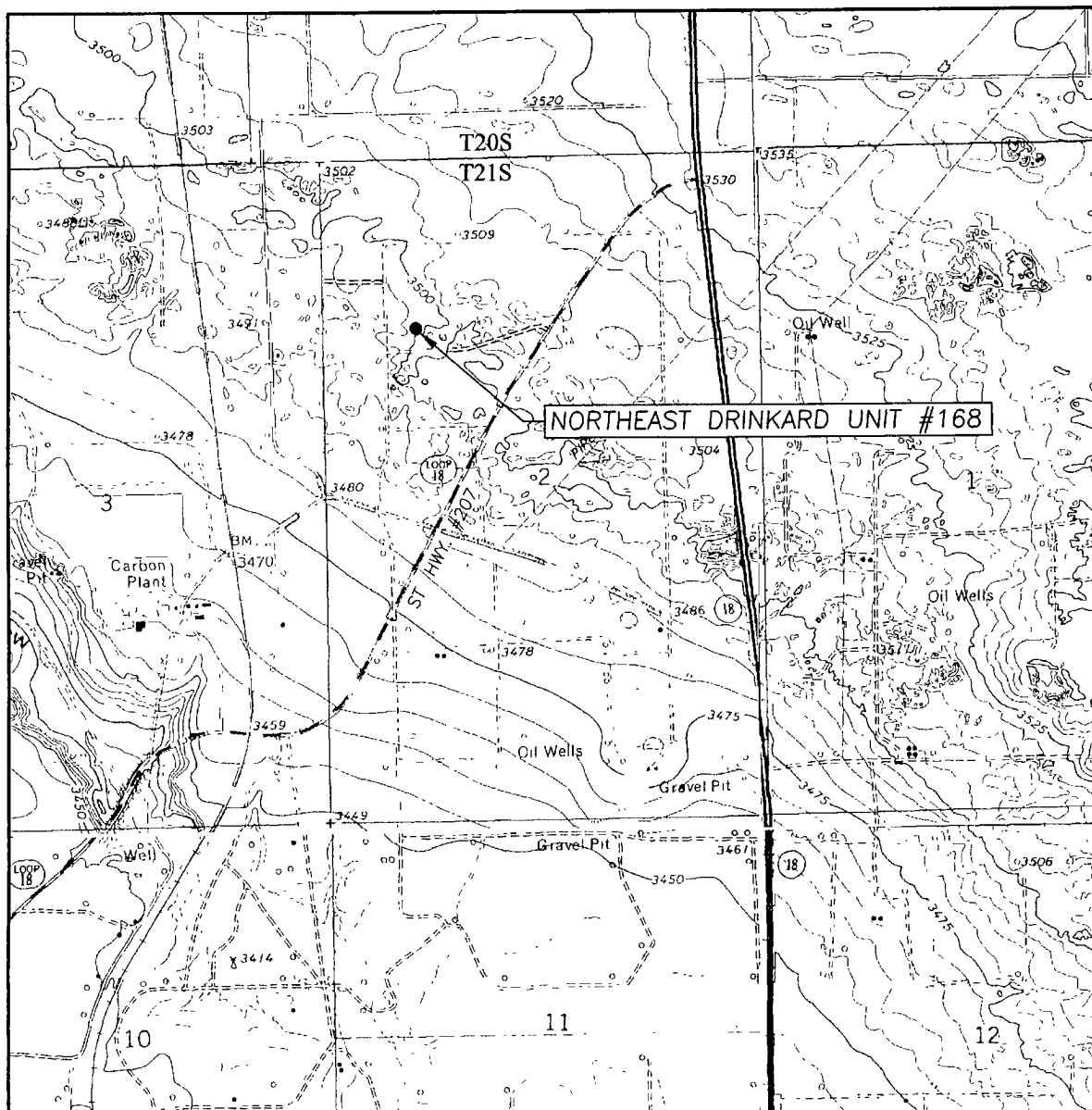


PROVIDING SURVEYING SERVICES
SINCE 1946

JOHN WEST SURVEYING COMPANY

412 N. DAL PASO
HOBBS, N.M. 88240
(575) 393-3117

LOCATION VERIFICATION MAP



SCALE: 1" = 2000'

SEC. 2 TWP. 21-S RGE. 37-E

SURVEY N.M.P.M

COUNTY LEA STATE NEW MEXICO

DESCRIPTION 1970' FNL & 1125' FWL

ELEVATION 3501'

OPERATOR APACHE CORPORATION

LEASE NORTHEAST DRINKARD UNIT

U.S.G.S. TOPOGRAPHIC MAP

HOBBS SW, N.M.

CONTOUR INTERVAL:

EUNICE, N.M. - 10'

EUNICE NE, N.M. - 10'

HOBBS SW, N.M. - 5'

HOBBS SE, N.M. - 5'

