

District I
1625 N. French Dr., Hobbs, NM 88240
District II
1301 W. Grand Avenue, Artesia, NM 88210
District III
1000 Rio Brazos Road, Aztec, NM 87410
District IV
1220 S. St. Francis Dr., Santa Fe, NM 87505

State of New Mexico
Energy Minerals and Natural Resources

Form C-101
June 16, 2008

RECEIVED

OCT 04 2010

HOBBSOCD

Oil Conservation Division
1220 South St. Francis Dr.
Santa Fe, NM 87505

Submit to appropriate District Office

AMENDED REPORT

APPLICATION FOR PERMIT TO DRILL, RE-ENTER, DEEPEN, PLUGBACK, OR ADD A ZONE

¹ Operator Name and Address CELERO ENERGY II, LP 400 W. Illinois, Suite 1601, Midland, TX 79701		² OGRID Number 247128
³ Property Code 30 3735		³ API Number 30 - 005 - 29155
⁵ Property Name ROCK QUEEN UNIT		⁶ Well No. 310
⁹ Proposed Pool 1 CAPROCK: QUEEN		¹⁰ Proposed Pool 2

7 Surface Location

UL or lot no. N	Section 24	Township 13 S	Range 31 E	Lot Idn	Feet from the 660	North/South line North S	Feet from the 2100 2100 W	East/West line East W	County Chaves
--------------------	---------------	------------------	---------------	---------	----------------------	-----------------------------	------------------------------	--------------------------	------------------

8 Proposed Bottom Hole Location If Different From Surface

UL or lot no.	Section	Township	Range	Lot Idn	Feet from the	North/South line	Feet from the	East/West line	County
---------------	---------	----------	-------	---------	---------------	------------------	---------------	----------------	--------

Additional Well Information

¹¹ Work Type Code N	¹² Well Type Code O	¹³ Cable/Rotary R	¹⁴ Lease Type Code S	¹⁵ Ground Level Elevation 4405'
¹⁶ Multiple N	¹⁷ Proposed Depth 3100'	¹⁸ Formation Queen	¹⁹ Contractor Union Drilling Inc	²⁰ Spud Date 9/30/2010

21 Proposed Casing and Cement Program

Hole Size	Casing Size	Casing weight/foot	Setting Depth	Sacks of Cement	Estimated TOC
11"	8-5/8"	24#	350'	135	Surface
7-7/8"	5-1/2"	15.5#	3100'	680	Surface

²² Describe the proposed program. If this application is to DEEPEN or PLUG BACK, give the data on the present productive zone and proposed new productive zone. Describe the blowout prevention program, if any. Use additional sheets if necessary.

1. Prepare surface location. Move in and rig up drilling rig. Install riser and bell nipple. Spud well.
2. Drill 11" surface hole to a minimum depth of 350'. Set 8-5/8" casing and cement to surface. Install & test BOP's.
3. Drill 7-7/8" production hole, 3100' TD. Evaluate logs to TD.
4. Set 5-1/2" to TD and cement to surface.
5. Place well on test.

Permit Expires 2 Years From Approval Date Unless Drilling Underway

²³ I hereby certify that the information given above is true and complete to the best of my knowledge and belief.

Signature:

Printed name:
Vickie A. Inman

Title:
Agent

E-mail Address:
Vickie A. Inman

Date:
9/22/2010

Phone:
432-682-4559

OIL CONSERVATION DIVISION

Approved by:

Title:
PETROLEUM ENGINEER

Approval Date: **OCT 06 2010**

Expiration Date:

CONDITION OF APPROVAL FOR APD'S

"Once the well is spud, to prevent ground water contamination through whole or partial conduits from the surface, the operator shall drill without interruption through the fresh water zone or zones and shall immediately set in cement the water protection string "

OK

RECEIVED

DISTRICT I
1625 N FRENCH DR., HOBBS, NM 88240

State of New Mexico
Energy, Minerals and Natural Resources Department

Form C-102
Revised October 12, 2005
Submit to Appropriate District Office
State Lease - 4 Copies
Fee Lease - 3 Copies

DISTRICT II
1301 W. GRAND AVENUE, ARTESIA, NM 88203

OCT 04 2010
HOBBS, NM

CONSERVATION DIVISION
1220 SOUTH ST. FRANCIS DR.
Santa Fe, New Mexico 87505

DISTRICT III
1000 Rio Brazos Rd., Aztec, NM 87410

DISTRICT IV
1220 S. ST. FRANCIS DR., SANTA FE, NM 87505

WELL LOCATION AND ACREAGE DEDICATION PLAT

AMENDED REPORT

API Number 30-005-29155	Pool Code 8559	Pool Name CAPROCK: QUEEN
Property Code 303735	Property Name ROCK QUEEN UNIT	
Well Number 310	Operator Name CELERO ENERGY II LP	
OGRID No. 247128	Elevation 4399'	

Surface Location

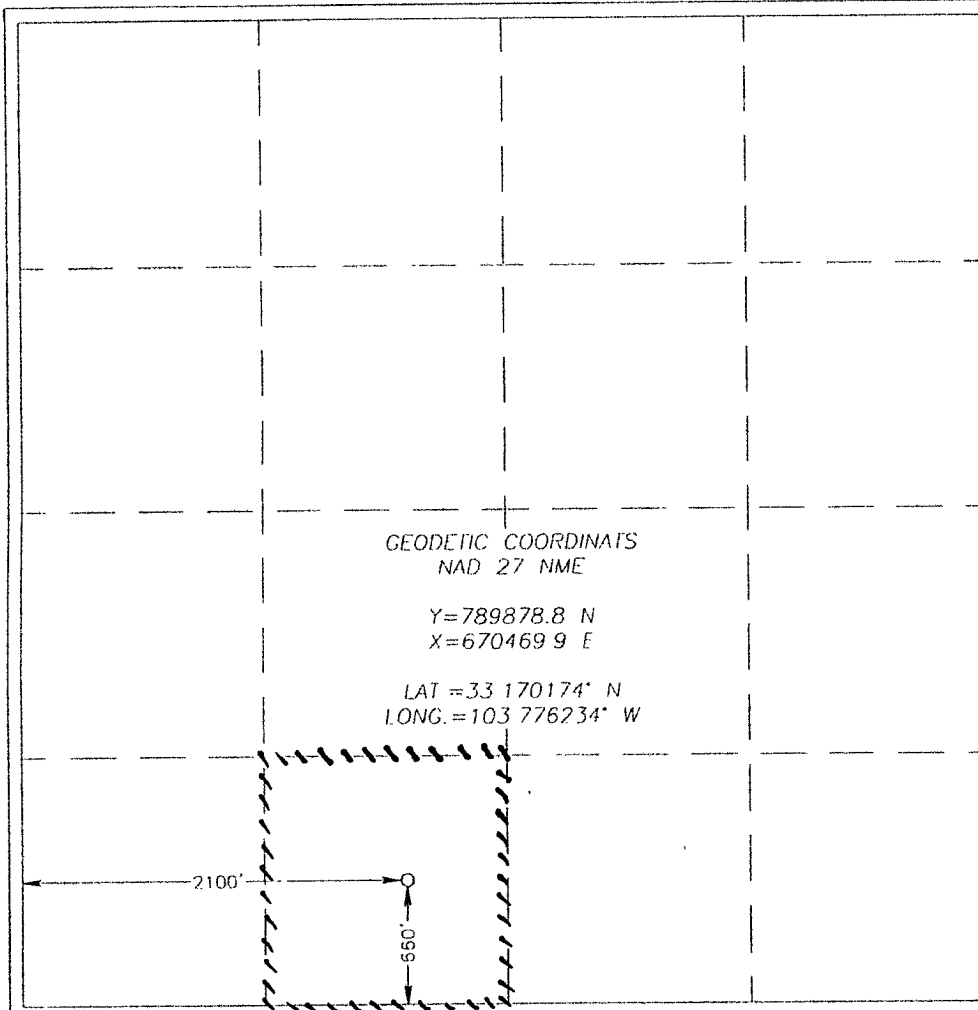
UL or lot No.	Section	Township	Range	Lot Idn	Feet from the	North/South line	Feet from the	East/EAST line	County
N	24	13-S	31-E		660	SOUTH	2100	EAST <input checked="" type="checkbox"/>	CHAVES

Bottom Hole Location If Different From Surface

UL or lot No.	Section	Township	Range	Lot Idn	Feet from the	North/South line	Feet from the	East/EAST line	County

Dedicated Acres 40	Joint or Infill	Consolidation Code	Order No.
------------------------------	-----------------	--------------------	-----------

NO ALLOWABLE WILL BE ASSIGNED TO THIS COMPLETION UNTIL ALL INTERESTS HAVE BEEN CONSOLIDATED OR A NON-STANDARD UNIT HAS BEEN APPROVED BY THE DIVISION



OPERATOR CERTIFICATION

I hereby certify that the information herein is true and complete to the best of my knowledge and belief, and that this organization either owns a working interest or unleased mineral interest in the land including the proposed bottom hole location or has a right to drill this well at this location pursuant to a contract with an owner of such mineral or working interest, or to a voluntary pooling agreement or a compulsory pooling order heretofore entered by the division.

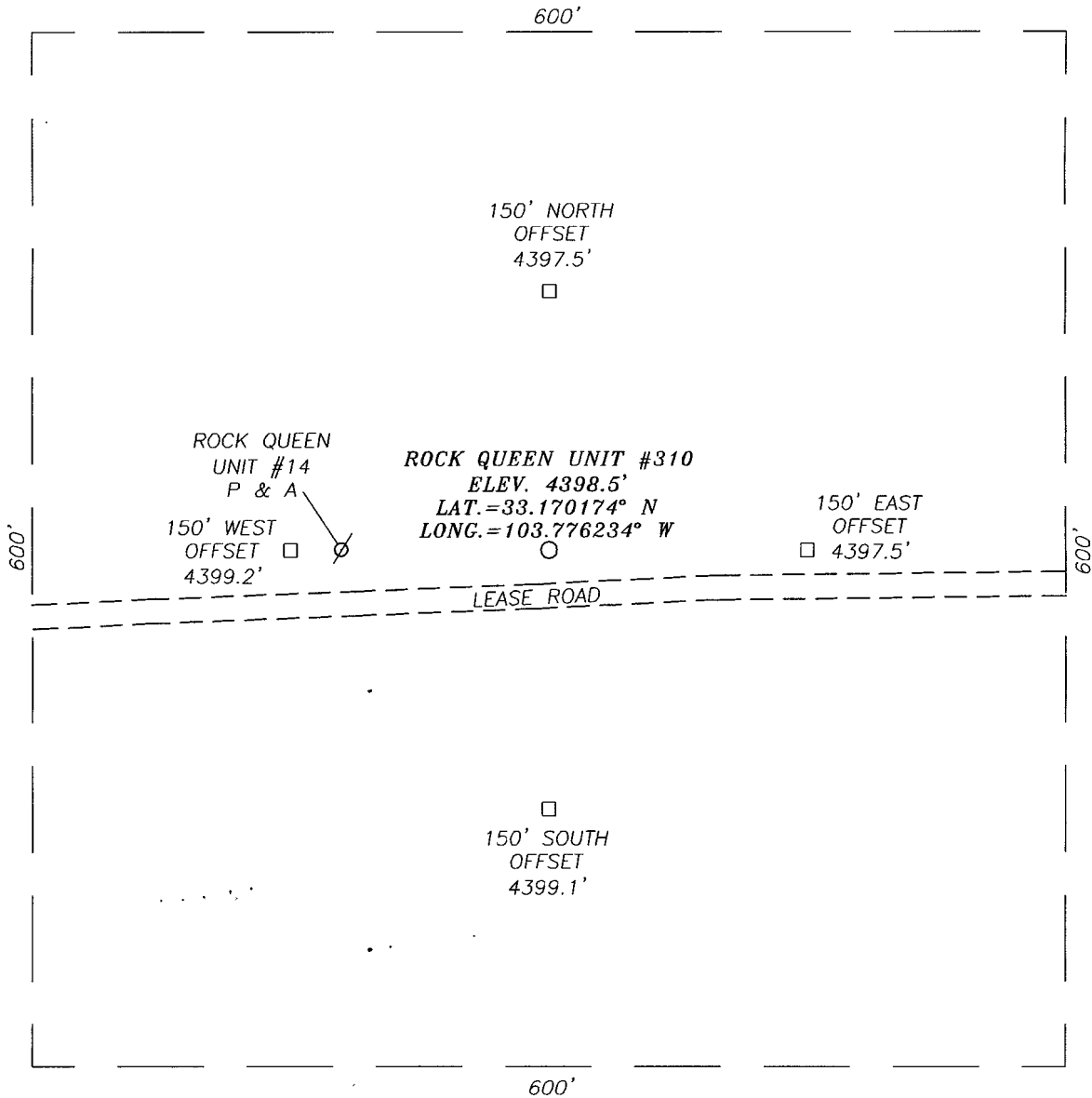
Vickie A. Inman 9/22/10
Signature Date
Vickie A. Inman, Agent
Printed Name

SURVEYOR CERTIFICATION

I hereby certify that the well location shown on this plat was plotted from field notes of actual surveys made by me or under my supervision, and that the same is true and correct to the best of my belief

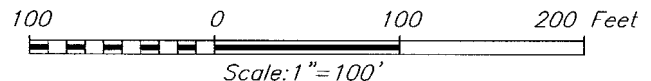
SEPT 24 2010
Date Surveyed
Signature & Seal of Professional Surveyor
RONALD J. EIDSON 3239
Ronald J. Eidson 9/24/2010
Certificate No. RONALD J. EIDSON 12641
RONALD J. EIDSON 3239

SECTION 24, TOWNSHIP 13 SOUTH, RANGE 31 EAST, N.M.P.M.,
 CHAVES COUNTY, NEW MEXICO



DIRECTIONS TO LOCATION

FROM THE INTERSECTION OF STATE HWY. #172 &
 PRISCILLA ROAD, GO SOUTH ON ST. HWY #172
 APPROX. 2.9 MILES. GO EAST APPROX. 1.4
 MILES. THE LOCATION STAKE IS APPROX. 25
 FEET NORTH



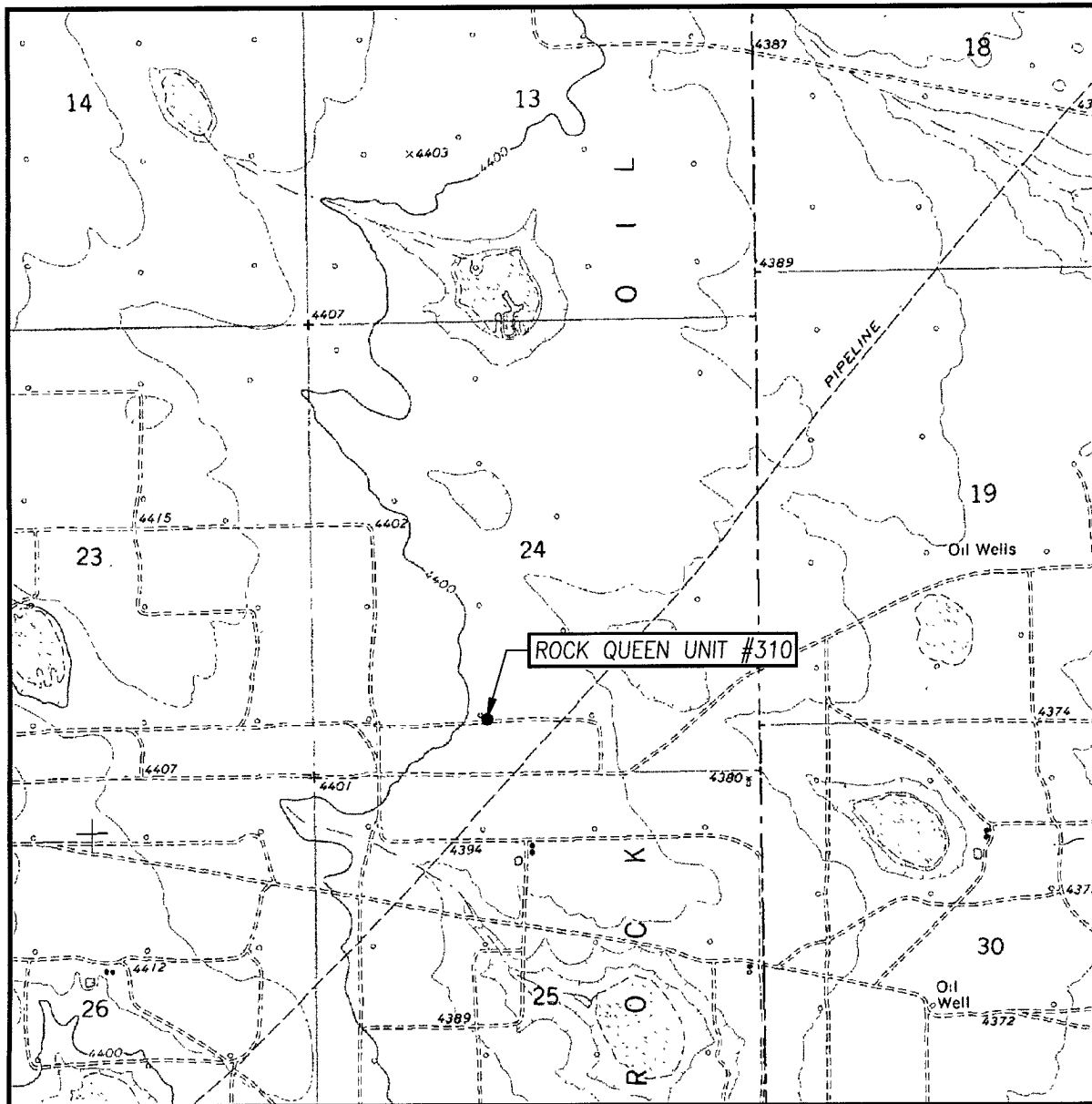
CELERO ENERGY II LP

ROCK QUEEN UNIT #310 WELL
 LOCATED 660 FEET FROM THE SOUTH LINE
 AND 2100 FEET FROM THE WEST LINE OF SECTION 24,
 TOWNSHIP 13 SOUTH, RANGE 31 EAST, N.M.P.M.,
 CHAVES COUNTY, NEW MEXICO.

Survey Date: 9/2/10		Sheet 1 of 1 Sheets	
W.O. Number: 10.11.1305	Dr By: LA	Rev 1:N/A	
Date: 9/10/10	10111305	Scale: 1"=100'	

PROVIDING SURVEYING SERVICES
 SINCE 1946
JOHN WEST SURVEYING COMPANY
 412 N. DAL PASO
 HOBBS, N.M. 88240
 (575) 393-3117

LOCATION VERIFICATION MAP



SCALE: 1" = 2000'

CONTOUR INTERVAL:
CAUDILL RANCH, N.M. - 10'

SEC. 24 TWP. 13-S RGE. 31-E

SURVEY N.M.P.M

COUNTY CHAVES STATE NEW MEXICO


DESCRIPTION 660' FSL & 2100' FEL

ELEVATION 4399'

OPERATOR CELERO ENERGY II LP

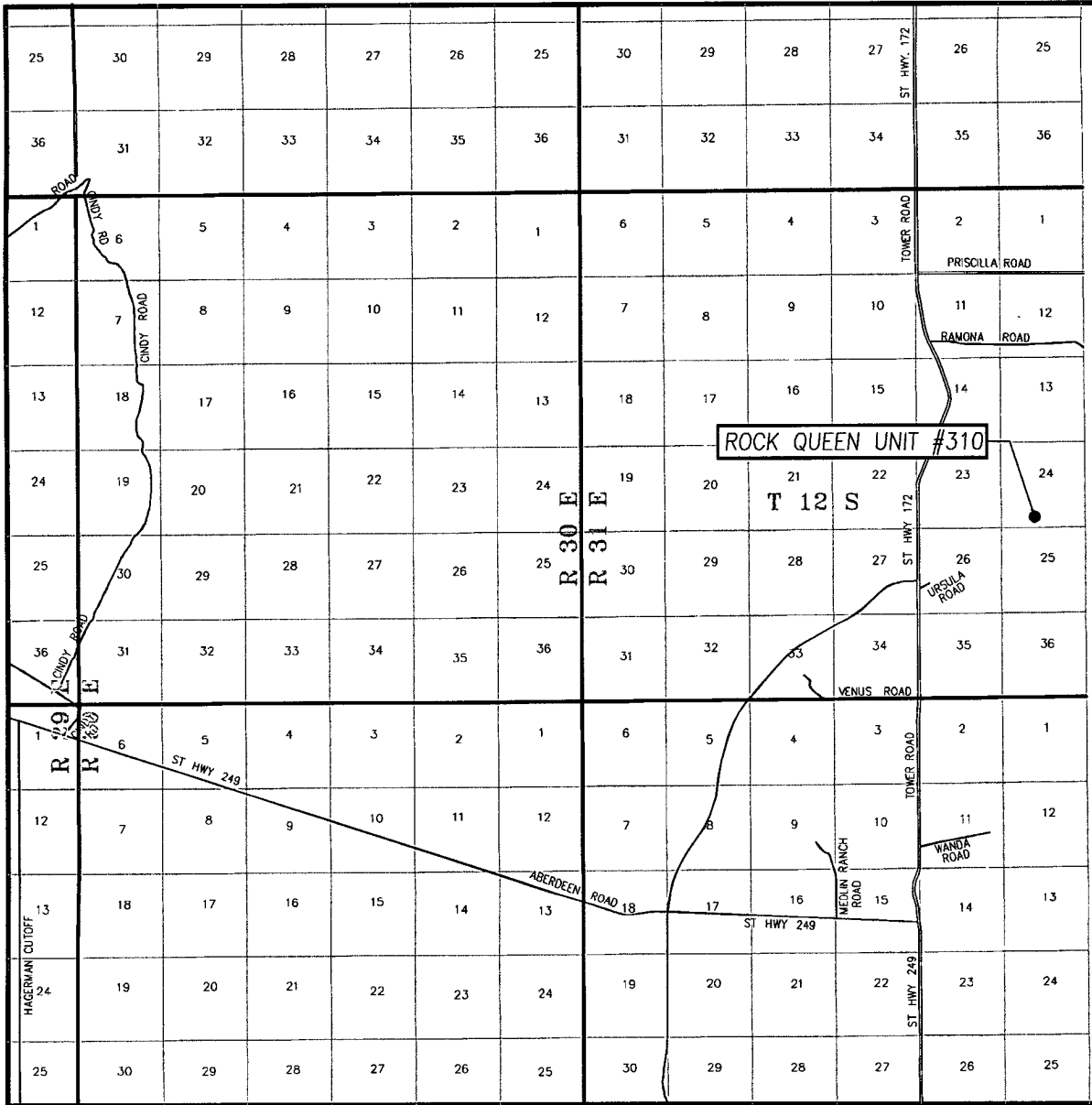
LEASE ROCK QUEEN UNIT

U.S.G.S. TOPOGRAPHIC MAP
CAUDILL RANCH, N.M.



PROVIDING SURVEYING SERVICES
SINCE 1946
JOHN WEST SURVEYING COMPANY
412 N. DAL PASO
HOBBS, N.M. 88240
(575) 393-3117

VICINITY MAP



8

SCALE 1"=2 MILES

SEC. 24 TWP. 13-S RGE. 31-E

SURVEY N.M.P.M.


COUNTY CHAVES STATE NEW MEXICO

DESCRIPTION 660' FSL & 2100' FWL

ELEVATION 4399'

OPERATOR CELERO ENERGY II LP

LEASE ROCK QUEEN UNIT

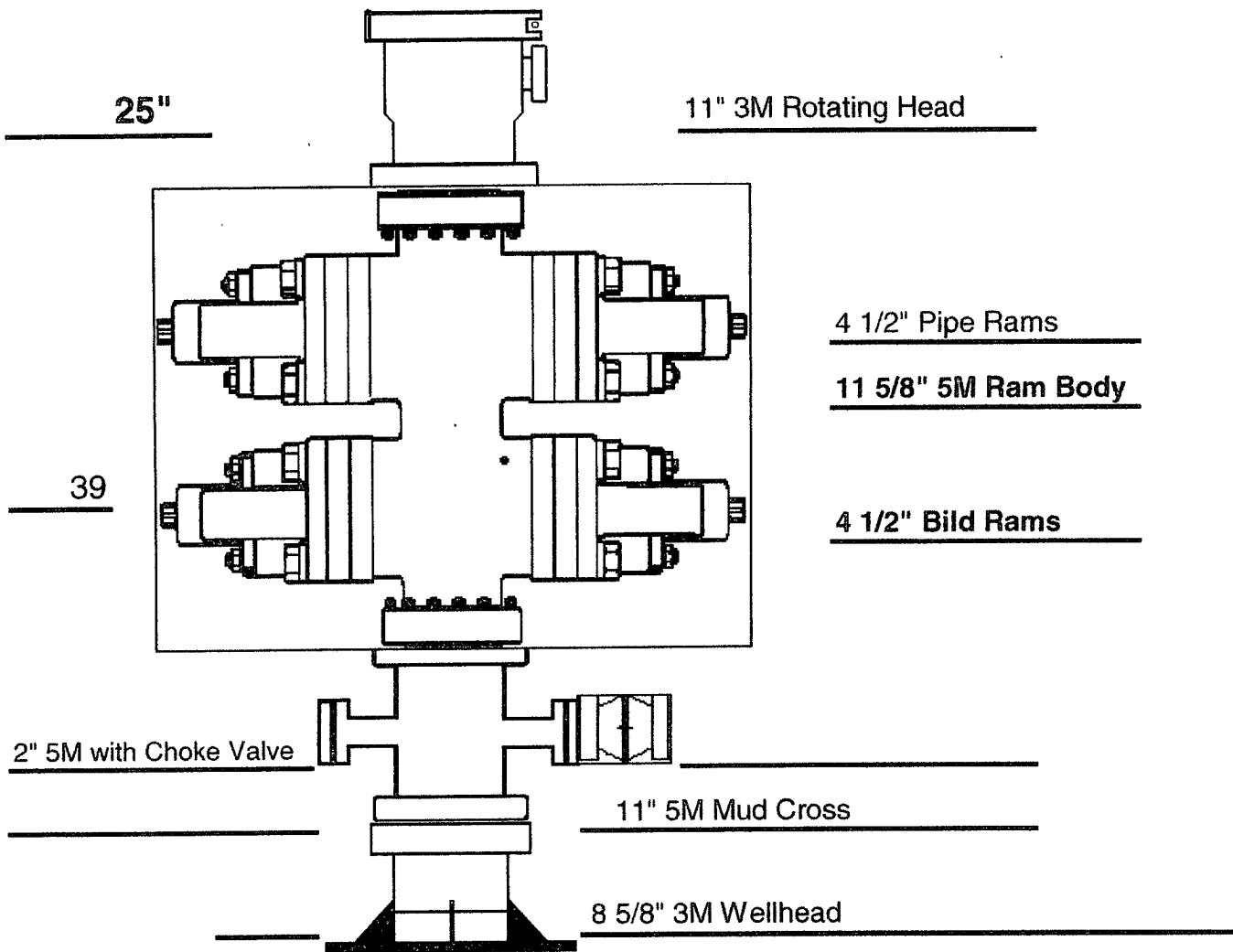


PROVIDING SURVEYING SERVICES
 SINCE 1946
JOHN WEST SURVEYING COMPANY
 412 N. DAL PASO
 HOBBS, N.M. 88240
 (575) 393-3117

UDI RIG 201 Surface - BOP

Length

Description



There is a 4" valve out of the mud cross flowing to gas buster

July 29, 2010
CELERO ENERGY
ROCK QUEEN PROJECT
Job Type: 5 1/2" CASING INSIDE OF 7 7/8" HOLE

Stephen W. Butts
Office: (575) 391-0091
Fax: (575) 391-0094
Cell: (575) 631-3151

SACKS

Lead 545 sks
175% Excess

CEMENT AND ADDITIVES

Class C 50/50 + 10% Bentonite + 0.25% R-38 + 5% Salt (BWOW)

Tall 135 sks
100% Excess

Class C 50/50 + 2% Bentonite + 0.25% R-38 + 5% Salt (BWOW)

	<u>Lead</u>	<u>Tall</u>
Density:	12.00 #/gal.	14.20 #/gal.
Yield:	2.30 cu.ft/sk	1.30 cu.ft/sk
Mixing Water:	13.01 gal/sk	5.91 gal/sk
Total Water Mix:	77.46 Bbls	9.85 Bbls
Slurry Volume:	102.46 Bbls	16.15 Bbls

Total Sacks: 680

Total Ft3: 1429

Total H2O: 187.8 Bbls

Hole Size: 7 7/8"

Total Depth: 3100'

Casing Size: 5 1/2"

Casing Depth: 3100'

Type of Plug: TRP
Size of Plug: 5 1/2"

July 29, 2010
CELERO ENERGY
ROCK QUEEN PROJECT
Job Type: 8 5/8" CASING INSIDE OF 11" HOLE

Stephen W. Butts
Office: (575) 391-0091
Fax: (575) 391-0094
Cell: (575) 631-3151

SACKS

Lead 135 sks

100% Excess

CEMENT AND ADDITIVES

Class C + 2% CACL2 + 0.125# Cello-flake + 0.25% R-38

	<u>Lead</u>
Density:	14.80 #/gal.
Yield:	1.35 cu.ft/sk
Mixing Water:	6.33 gal/sk
Total Water Mix:	20.36 Bbls
Slurry Volume:	32.37 Bbls

Total Sacks: 135 Total Ft3: 181.78 Total H2O: 20.36 Bbls

Hole Size: 11" Total Depth: 350'

Casing Size: 8 5/8" Casing Depth: 350' Type of Plug: TRP
Size of Plug: 8 5/8"