

Submit 1 Copy To Appropriate District Office
District I
1625 N French Dr., Hobbs, NM 88240
District II
1301 W. Grand Ave., Artesia, NM 88210
District III
1000 Rio Brazos Rd., Aztec, NM 87410
District IV
1220 S. St. Francis Dr., Santa Fe, NM 87505

State of New Mexico
Energy, Minerals and Natural Resources

Form C-103
October 13, 2009

OIL CONSERVATION DIVISION

RECEIVED

South St. Francis Dr.
Santa Fe, NM 87505

OCT 05 2010

SUNDRY NOTICES AND REPORTS ON WELLS (DO NOT USE THIS FORM FOR PROPOSALS TO DRILL OR TO DEEPEN OR PLUG BACK TO A DIFFERENT RESERVOIR. USE "APPLICATION FOR PERMIT" (FORM C-101) FOR SUCH PROPOSALS)		WELL API NO. 30-025-08008
1. Type of Well: Oil Well <input checked="" type="checkbox"/> Gas Well <input type="checkbox"/> Other <input checked="" type="checkbox"/>		5. Indicate Type of Lease STATE <input checked="" type="checkbox"/> FEE <input type="checkbox"/>
2. Name of Operator Paladin Energy Corp.		6. State Oil & Gas Lease No.
3. Address of Operator 10290 Monroe Dr., Suite 301, Dallas, Texas 75229		7. Lease Name or Unit Agreement Name New Mexico State BH NCT 1
4. Well Location Unit Letter F : 1980 feet from the North line and 1980 feet from the West line Section 11 Township 12-S Range 32-E NMPM Lea County		8. Well Number 2
11. Elevation (Show whether DR, RKB, RT, GR, etc.) 4366' GR		9. OGRID Number 164070
		10. Pool name or Wildcat Caprock Wolfcamp, East

12. Check Appropriate Box to Indicate Nature of Notice, Report or Other Data

NOTICE OF INTENTION TO:

PERFORM REMEDIAL WORK ☐ PLUG AND ABANDON ☐
TEMPORARILY ABANDON ☒ CHANGE PLANS ☐
PULL OR ALTER CASING ☐ MULTIPLE COMPL ☐
DOWNHOLE COMMINGLE ☐

OTHER: ☐

SUBSEQUENT REPORT OF:

REMEDIAL WORK ☐ ALTERING CASING ☐
COMMENCE DRILLING OPNS. ☐ P AND A ☐
CASING/CEMENT JOB ☐

OTHER: ☐

13. Describe proposed or completed operations. (Clearly state all pertinent details, and give pertinent dates, including estimated date of starting any proposed work). SEE RULE 19.15.7.14 NMAC. For Multiple Completions: Attach wellbore diagram of proposed completion or recompletion.

Previous Operations from 3/27/2008 to 4/4/2008

Tagged CIBP set at 8,625'. WIH and set cement retainer at 8,556'. Pumped 200 Sacks of class H cement and squeezed perforations from 8,431-8,600'. Stung out of retainer and pulled up, left tubing hanging with end of tubing at approximately 8,200'. Returned next day found tubing stuck. Free-pointed tubing and found tubing free above 6000'. Cut tubing at 5,955', possible collapsed casing at 6,000'. WBIH and latched onto tubing at 5,955', jarred and made repeated attempts to pull tubing for two days, could not retrieve any more tubing. Shut-in well.

Proposed T&A

T/A STATUS FOR ONE (1) YR. ONLY
R/U pulling unit. Set CIBP at 5,941'. Set 40' of cement on top of CIBP. Fill Casing with packer fluid, test 5-1/2" casing to 500# for 30 minutes. Record chart.

Condition of Approval: Notify OCD Hobbs office 24 hours prior to running MIT Test & Chart

Spud Date:

Rig Release Date:

I hereby certify that the information above is true and complete to the best of my knowledge and belief.

SIGNATURE

Michael Horn

Operations Manager

TITLE

paladinmid@suddenlink.net

DATE 10-5-2010

432-634-6599

Type or print name

E-mail address:

PHONE:

For State Use Only

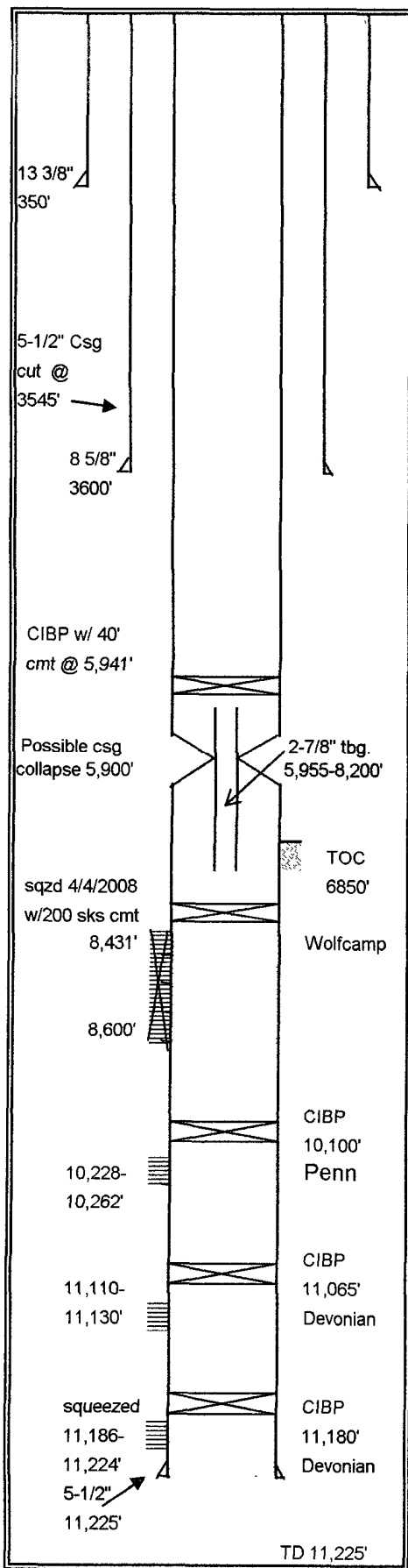
APPROVED BY:

TITLE

DATE 10-7-10

Conditions of Approval (if any):

Wellbore Schematic



Lease: <u>State BH NCT #1</u>	Well: <u>#2</u>	API # <u>30-025-08008</u>
Field: <u>East Caprock</u>	County: <u>Lea</u>	State <u>New Mexico</u>
Section <u>11</u>	Township <u>12-S</u>	Range <u>32-E</u>
Elev . GL <u>4366'</u>	Elev. DF <u></u>	Elev. KB <u></u>
Spudded <u></u>	Completed <u>3/23/1953</u>	1980' FN&WL

[illegible]

Prepared By: David Plaisance
Date: _____

PALADIN ENERGY CORP.

Well Servicing, Workover & Completion Record

LEASE	<u>State B H</u>	WELL NO	<u>2</u>	DATE(S)	<u>3/27/2008</u>
FIELD	<u>E Caprock</u>	COUNTY	<u>Lea</u>	STATE	<u>NM</u>
CONTRACTOR	<u>Joe's Well Ser</u>	SUPERVISOR	<u>Pete Stull</u>		
WORK SUMMARY	recompletion				

Road rig to location , move in and rig up pulling unit on matting board. ND WH LD horse head , unseat pump POW w/rods lay down on ground. LD 106 x 1" steel rods, 117 x 7/8" steel rods, 112 x 3/4" steel rods, 6 x 1-1/4" K Bars. 2-1/2" x 1-1/2" x 22' pump. NU BOP and rig to pull tbg. Release TAC, POW tally tbg out of hole. Pulled a total of (0268 jts 2-7/8' tbg. 258 jts,TAC, 7 jts. SN, perf jts, 1 jt BPMA. SWI SDFN

DAILY COSTS:

ROAD, LOCATIONS & DAMAGES

4000

400

LOGGING & PERFORATING

STIMULATION

TRUCKING & TRANSPORTATION

CEMENTING

COMPLETION FLUIDS

CONTRACT & COMPANY SERVICES

MISCELLANEOUS SUPPLIES

1005

OTHER

TULULARS

WELLHEAD EQUIPMENT

SUBSURFACE EQUIPMENT

ARTIFICIAL LIFT EQUIPMENT

SUCKER RODS

TANKS

PRESSURE VESSELS

FLOWLINES

INSTALLATION

FITINGS, VALVES, ETC.

METERS, LACT, ETC.

ELECTRICAL EQUIPMENT

5105

6105

WELL RECORD		
PULLED FROM WELL	EQUIPMENT	RUN IN WELL

PALADIN ENERGY CORP.

Well Servicing, Workover & Completion Record

LEASE	B H	WELL NO	2	DATE(S)	3/28/2008
FIELD	E Caprock	COUNTY	Lea	STATE	NM
CONTRACTOR	Joe's Well Ser	SUPERVISOR	Pete Stull		
WORK SUMMARY	recompletion				

Open well, RU tbg tester, PU SN RIW testing tbg to 7000# didn't split any jts. RD tester truck, POW w/tbg

DAILY COSTS:

ROAD, LOCATIONS & DAMAGES		TULULARS	
RIG COST	3000	WELLHEAD EQUIPMENT	
EQUIPMENT RENTAL		SUBSURFACE EQUIPMENT	
LOGGING & PERFORATING		ARTIFICIAL LIFT EQUIPMENT	
STIMULATION		SUCKER RODS	
TRUCKING & TRANSPORTATION		TANKS	
CEMENTING		PRESSURE VESSELS	
COMPLETION FLUIDS		FLOWLINES	
CONTRACT & COMPANY WERVICES		INSTALLATION	
MISCELLANEOUS SUPPLIES		FITINGS, VALVES, ETC.	
ENGR. & SUPERVISION	1005	METERS, LACT, ETC.	
OTHER	tbg tstr	ELECTRICAL EQUIPMENT	
	2300	TOTAL DAILY COST	6305
		CUMULATIVE COST	12410

WELL RECORD		
PULLED FROM WELL	EQUIPMENT	RUN IN WELL

PALADIN ENERGY CORP.

Well Servicing, Workover & Completion Record

LEASE	B H	WELL NO	2	DATE(S)	3/31/2008
FIELD	E Caprock	COUNTY	Lea	STATE	NM
CONTRACTOR	Joe's Well Ser	SUPERVISOR	Pete Stull		
WORK SUMMARY	recompletion				

Open well, RU cement trucks and 3 transports w/fresh water. PU cement retainer, RIW to 8556' pump volume of tbg plus 10 bbls total of 56 bbls, no pressure, set retainer. Unsting and sting back in ret. Load hole and have leak at surface. Pump into perf for injection rate no press pump 75 bbls no pressure, Mix and pump 100 sks of class "H" cmt no pressure, pump to bottom of perfs. Leave open and well pulling .8 bpm of water, for one hour took 41 bbls, of wtr. Mix and pump another 100 sx of class "H" cmt, 1800# pressure. Leave TBG shut in for 30 min,tbg at 1700# RD cmt trucks and transports, LD 10 jts of tbg. SWI SDFN

DAILY COSTS:

ROAD, LOCATIONS & DAMAGES		TULULARS	
RIG COST	3300	WELLHEAD EQUIPMENT	
EQUIPMENT RENTAL		SUBSURFACE EQUIPMENT	
LOGGING & PERFORATING		ARTIFICIAL LIFT EQUIPMENT	
STIMULATION		SUCKER RODS	
TRUCKING & TRANSPORTATION	2000	TANKS	
CEMENTING	10142	PRESSURE VESSELS	
COMPLETION FLUIDS		FLOWLINES	
CONTRACT & COMPANY WERVICES		INSTALLATION	
MISCELLANEOUS SUPPLIES		FITINGS, VALVES, ETC	
ENGR. & SUPERVISION	1145	METERS, LACT, ETC	
OTHER	2500	ELECTRICAL EQUIPMENT	
		TOTAL DAILY COST	19087
		CUMULATIVE COST	31447

WELL RECORD		
PULLED FROM WELL	EQUIPMENT	RUN IN WELL

PALADIN ENERGY CORP.

Well Servicing, Workover & Completion Record

LEASE	B H	WELL NO	2	DATE(S)	4/1/2008
FIELD	E Caprock	COUNTY	Lea	STATE	NM
CONTRACTOR	Joe's Well Ser	SUPERVISOR	Pete Stull		
WORK SUMMARY	recompletion				

Open well,. Try to run in hole w/tbg in derrick. Tag up immediately off slips. Stand back tbg. Try to pull tbg and tbg stuck. Pull several time to 100K . LD both doubles of tbg from derrick on ground. Dig out cellar with backhoe. Found a bad nipple in 8-5/8" well head spool. Replace nipple . Load hole and check that valve is open on 13-3/8" head.

SWI SDFN

DAILY COSTS:

ROAD, LOCATIONS & DAMAGES		TULULARS	
RIG COST	3300	WELLHEAD EQUIPMENT	
EQUIPMENT RENTAL	900	SUBSURFACE EQUIPMENT	
LOGGING & PERFORATING		ARTIFICIAL LIFT EQUIPMENT	
STIMULATION		SUCKER RODS	
TRUCKING & TRANSPORTATION	1200	TANKS	
CEMENTING		PRESSURE VESSELS	
COMPLETION FLUIDS		FLOWLINES	
CONTRACT & COMPANY WERVICES		INSTALLATION	
MISCELLANEOUS SUPPLIES		FITINGS, VALVES, ETC.	
ENGR. & SUPERVISION	1005	METERS, LACT, ETC.	
OTHER	rev hand	ELECTRICAL EQUIPMENT	
	2400	TOTAL DAILY COST	8805
		CUMULATIVE COST	50242

WELL RECORD

PULLED FROM WELL	EQUIPMENT	RUN IN WELL
------------------	-----------	-------------

PALADIN ENERGY CORP.

Well Servicing, Workover & Completion Record

LEASE	B H	WELL NO	2	DATE(S)	4/2/2008
FIELD	E Caprock	COUNTY	Lea	STATE	NM
CONTRACTOR	Joe's Well Ser	SUPERVISOR	Pete Stull		
WORK SUMMARY	recompletion				

Open well . RU WL truck to run free point. RIW to 6000' found tbg stuck 20%, pull up to 5955' and still stuck. Found tbg free 5940' . POW PU chemical cutter ran in well and made bottom cut at 6281' tbg cut but didn't fall free. POW PU another chemical cutter and RIW and made cut at 5933'. POW LD tools and RD WL truck. POW w/tbg LD cut off jt. PU overshot, bumper sub, jars and 5 3-1/2" DC's, had one bad pin wouldn't make up. RIW and latch onto fish w/overshot. Star jarring and jarred for six hours. Had pump truck load tbg for cuts. Pull 75k into slips
SWI SDFN

DAILY COSTS:

ROAD, LOCATIONS & DAMAGES		TULULARS	
RIG COST	4000	WELLHEAD EQUIPMENT	
EQUIPMENT RENTAL		SUBSURFACE EQUIPMENT	
LOGGING & PERFORATING	7776	ARTIFICIAL LIFT EQUIPMENT	
STIMULATION		SUCKER RODS	
TRUCKING & TRANSPORTATION	700	TANKS	
CEMENTING		PRESSURE VESSELS	
COMPLETION FLUIDS		FLOWLINES	
CONTRACT & COMPANY WERVICES		INSTALLATION	
MISCELLANEOUS SUPPLIES		FITINGS, VALVES, ETC.	
ENGR. & SUPERVISION	1005	METERS, LACT, ETC.	
OTHER	rev hand	ELECTRICAL EQUIPMENT	
	4945	TOTAL DAILY COST	18426
		CUMULATIVE COST	68668

WELL RECORD		
PULLED FROM WELL	EQUIPMENT	RUN IN WELL

PALADIN ENERGY CORP.

Well Servicing, Workover & Completion Record

LEASE	B H	WELL NO	2	DATE(S)	4/3/2008
FIELD	E Caprock	COUNTY	Lea	STATE	NM
CONTRACTOR	Joe's Well Ser	SUPERVISOR	Pete Stull		
WORK SUMMARY	recompletion				

Open well . Still had 75k in tension. Jared five hr, release overshoot and POW w/tbg. LD jars, PU another DC extension for overshoot, and an accelerator sub. RIW w/ overshoot, jars, 4 DC's, accelerator sub, 2 DC;s tag up and latch onto fish. Start jarring for 3 hrs. pull 75k tension into slips SWI SDFN

DAILY COSTS:

ROAD, LOCATIONS & DAMAGES

4000

50

LOGGING & PERFORATING

STIMULATION

TRUCKING & TRANSPORTATION

CEMENTING

COMPLETION FLUIDS

CONTRACT & COMPANY SERVICES

MISCELLANEOUS SUPPLIES

1005

rev hand

6580

TULULARS

WELLHEAD EQUIPMENT

SUBSURFACE EQUIPMENT

ARTIFICIAL LIFT EQUIPMENT

SUCKER RODS

TANKS

PRESSURE VESSELS

FLOWLINES

INSTALLATION

FITINGS, VALVES, ETC.

METERS, LACT, ETC.

ELECTRICAL EQUIPMENT

11635

80303

WELL RECORD		
PULLED FROM WELL	EQUIPMENT	RUN IN WELL

PALADIN ENERGY CORP.

Well Servicing, Workover & Completion Record

LEASE	B H	WELL NO	2	DATE(S)	4/4/2008
FIELD	E Caprock	COUNTY	Lea	STATE	NM
CONTRACTOR	Joe's Well Ser	SUPERVISOR	Pete Stull		
WORK SUMMARY	recompletion				

Open well, start jarring on stuck tubing. Jarred on tbg 5.5 hrs, released overshot POW w/tbg and BHA. LD 6 DC's, jars, accelerator, overshot and xovers. PU SN and run tbg in hole. ND BOP, NU WH. RD pulling unit move off location.

DAILY COSTS:

ROAD, LOCATIONS & DAMAGES		TULULARS	
RIG COST	3300	WELLHEAD EQUIPMENT	
EQUIPMENT RENTAL	50	SUBSURFACE EQUIPMENT	
LOGGING & PERFORATING		ARTIFICIAL LIFT EQUIPMENT	
STIMULATION		SUCKER RODS	
TRUCKING & TRANSPORTATION		TANKS	
CEMENTING		PRESSURE VESSELS	
COMPLETION FLUIDS		FLOWLINES	
CONTRACT & COMPANY SERVICES		INSTALLATION	
MISCELLANEOUS SUPPLIES		FITINGS, VALVES, ETC.	
ENGR. & SUPERVISION	1005	METERS, LACT, ETC.	
OTHER	1000	ELECTRICAL EQUIPMENT	
		TOTAL DAILY COST	5355
		CUMULATIVE COST	85658

WELL RECORD		
PULLED FROM WELL	EQUIPMENT	RUN IN WELL