

District I

1625 N. French Dr., Hobbs, NM 88240

District II

1301 W. Grand Avenue, Artesia, NM 88210

District III

1000 Rio Brazos Rd., Aztec, NM 87410

District IV

1220 S. St. Francis Dr., Santa Fe, NM 87505

RECEIVED

State of New Mexico

Energy, Minerals & Natural Resources Department

OCT 04 2010 OIL CONSERVATION DIVISION

HOBBSOCD 1220 South St. Francis Dr.

Santa Fe, NM 87505

Form C-102

Revised July 16, 2010

Submit one copy to appropriate

District Office

☐ AMENDED REPORT

WELL LOCATION AND ACREAGE DEDICATION PLAT

¹ API Number 30-025-34781	² Pool Code 13310	³ Pool Name CORBIN; WOLFCAMP, EAST
⁴ Property Code	⁵ Property Name HAWKEYE 30 STATE	⁶ Well Number 1
⁷ OGRID No. 256512	⁸ Operator Name CML EXPLORATION, LLC	⁹ Elevation 4086'

¹⁰ Surface Location

UL or lot no.	Section	Township	Range	Lot Idn	Feet from the	North/South line	Feet from the	East/West line	County
J	30	17S	34E		1980	SOUTH	1970	EAST	LEA

¹¹ Bottom Hole Location If Different From Surface

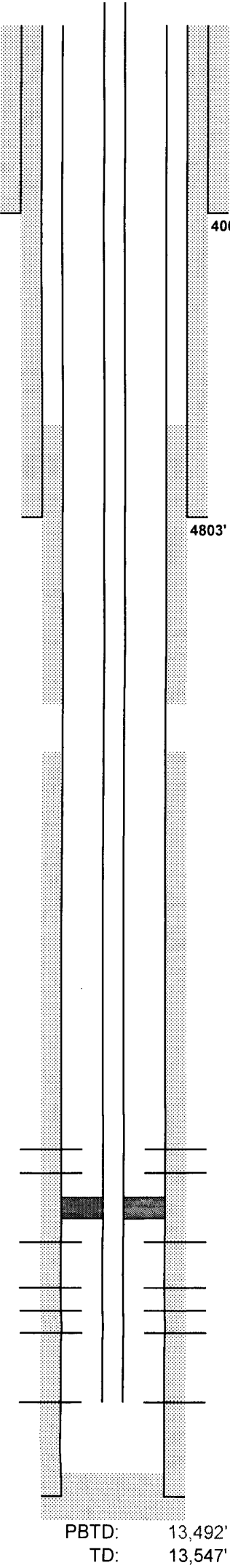
UL or lot no.	Section	Township	Range	Lot Idn	Feet from the	North/South line	Feet from the	East/West line	County

¹² Dedicated Acres 40	¹³ Joint or Infill	¹⁴ Consolidation Code	¹⁵ Order No.
-------------------------------------	-------------------------------	----------------------------------	-------------------------

No allowable will be assigned to this completion until all interests have been consolidated or a non-standard unit has been approved by the division.

¹⁶	¹⁷ OPERATOR CERTIFICATION I hereby certify that the information contained herein is true and complete to the best of my knowledge and belief, and that this organization either owns a working interest or unleased mineral interest in the land including the proposed bottom hole location or has a right to drill this well at this location pursuant to a contract with an owner of such a mineral or working interest, or to a voluntary pooling agreement or a compulsory pooling order heretofore entered by the division. Signature Date 9/29/10 Nolan von Roeder Printed Name vonroedern@cmlexp.com E-mail Address
	¹⁸ SURVEYOR CERTIFICATION I hereby certify that the well location shown on this plat was plotted from field notes of actual surveys made by me or under my supervision, and that the same is true and correct to the best of my belief.
	Date of Survey Signature and Seal of Professional Surveyor:

CML EXPLORATION, LLC



RKB 4103.5'
GL 4086'

Lease & Well No.: **Hawkeye 30 St # 1**

Well Category:
Area: **New Mexico**
Subarea: **Buckeye**
Legal Description: **API #30-025-34781**
1980' FSL, 1970' FEL, Sec 30, T-17-S, R-34-E
Lea County, NM

17½" hole
13 3/8" 48# J55
set @ 400'
400 sx cement

Spudded: **12/15/1999**
TD: **02/03/1999**
Completed: **02/25/2000**

Stimulation: 1/7/2010 Acidized all Morrow w/ 3000 gals
of 7.5% HCL Claysafe acid

11" hole
8 5/8" 32# J-55 & S80
set @ 4803'
1700 sx cement.
TOC = surface

Squeezed 5½" casing @ 9200' w/ 1070 sx, had circulation

5½" TOC = 4,000' Est.

Production Tbg
420 jts 2 7/8" 6.5# N-80 tbg

Strawn Perfs
12,484 - 94' 6 spf Squeezed w/ 100 sx cement

Morrow Perfs
13,137 - 43' 4 spf

13,246 - 52' 6 spf
13,260 - 80' 6 spf
13,294 - 300' 6 spf

13,452 - 70' 6 spf

5 1/2" 17# MAV 95/P110 @ 13,535'
Cmt'd w/ 1000 sks

PBTD: 13,492'
TD: 13,547'