

District I  
1625 N. French Dr., Hobbs, NM 88240  
District II  
1301 W. Grand Avenue, Artesia, NM 88210  
District III  
1000 Rio Brazos Road, Aztec, NM 87410  
District IV  
1220 S. St. Francis Dr., Santa Fe, NM 87505

State of New Mexico  
Minerals and Natural Resources  
**RECEIVED**  
APR 27 2010  
Oil Conservation Division  
1220 South St. Francis Dr.  
Santa Fe, NM 87505  
**HOBBSDO**

Form C-101  
May 27, 2004

Submit to appropriate District Office

☐ AMENDED REPORT

**APPLICATION FOR PERMIT TO DRILL, RE-ENTER, DEEPEN, PLUGBACK, OR ADD A ZONE**

<sup>1</sup> Operator Name and Address Kaiser-Francis Oil Company P. O. Box 21468, Tulsa, OK 74121-1468		<sup>2</sup> OGRID Number 012361
<sup>3</sup> Property Code 24635 5437		<sup>4</sup> Property Name Bell Lake Unit
<sup>5</sup> Proposed Pool 1 Bell Lake Delaware NE		<sup>6</sup> Well No. 20

**7 Surface Location**

UL or lot no. E	Section 32	Township 22S	Range 34E	Lot Idn -	Feet from the 1650	North/South line North	Feet from the 660	East/West line West	County Lea
--------------------	---------------	-----------------	--------------	--------------	-----------------------	---------------------------	----------------------	------------------------	---------------

**8 Proposed Bottom Hole Location If Different From Surface n/a**

UL or lot no.	Section	Township	Range	Lot Idn	Feet from the	North/South line	Feet from the	East/West line	County
---------------	---------	----------	-------	---------	---------------	------------------	---------------	----------------	--------

**Additional Well Information**

<sup>11</sup> Work Type Code P	<sup>12</sup> Well Type Code O	<sup>13</sup> Cable/Rotary R	<sup>14</sup> Lease Type Code S	<sup>15</sup> Ground Level Elevation 3424
<sup>16</sup> Multiple N	<sup>17</sup> Proposed Depth 13370	<sup>18</sup> Formation Delaware	<sup>19</sup> Contractor Unknown	<sup>20</sup> Spud Date 9/15/99
Depth to Groundwater		Distance from nearest fresh water well		Distance from nearest surface water
Pit: Liner: Synthetic <input type="checkbox"/> _____ mils thick Clay <input type="checkbox"/> Pit Volume: _____ bbls Drilling Method: _____				
Closed-Loop System <input type="checkbox"/> Fresh Water <input type="checkbox"/> Brine <input type="checkbox"/> Diesel/Oil-based <input type="checkbox"/> Gas/Air <input type="checkbox"/>				

**21 Proposed Casing and Cement Program**

Hole Size	Casing Size	Casing weight/foot	Setting Depth	Sacks of Cement	Estimated TOC
26	20	94	850	1000	Surface
17 1/2	13 3/8	61	2240	1150	Surface
12 1/4	9 5/8	40	5140	1670	Surface
8 3/4	7	26	12000	1755	5300
7 (1nr)	4 1/2	13.5	11805-13345	200	11805

<sup>22</sup> Describe the proposed program. If this application is to DEEPEN or PLUG BACK, give the data on the present productive zone and proposed new productive zone. Describe the blowout prevention program, if any. Use additional sheets if necessary.

1. MIRU WOR. NDWH. NUBOP. Release packer. POOH w/tbg & pkr.
2. MIRU WL. Set CIBP @ 12855' & dump 35' cmt on plug. RDMO WL.
3. RIH w/tbg. Spot mud pill from PBTDoto 9400'. Spot cmt plug from 12050' - 11750'.
4. Tag plug. Spot cmt plug from 9450'-9350'. Displace hole w/2% KCL.
5. Run CBL to confirm TOC. Test casing. Perf @ 8284-8296, 8316-8326 & 8402-8428.
6. Frac. Set CBP & perf @ 8082-8094 & 8098-8136. Frac.
7. Drill out CBP. Test well.

**Permit Expires 2 Years From Approval  
Date Unless Drilling Underway  
Plugback**

<sup>23</sup> I hereby certify that the information given above is true and complete to the best of my knowledge and belief. I further certify that the drilling pit will be constructed according to NMOCD guidelines <input type="checkbox"/> , a general permit <input type="checkbox"/> , or an (attached) alternative OCD-approved plan <input type="checkbox"/> .		<b>OIL CONSERVATION DIVISION</b>	
Printed name: Charlotte Van Valkenburg		Approved by:	
Title: Technical Coordinator		Title: PETROLEUM ENGINEER	
E-mail Address: Charlotv@kfoc.net		Approval Date: NOV 10 2010 Expiration Date:	
Date: 4/23/10	Phone: 918-491-4314	Conditions of Approval Attached <input type="checkbox"/>	

District I  
1625 N. French Dr., Hobbs, NM 88240  
District II  
1301 W. Grand Avenue, Artesia, NM 88210  
District III  
1000 Rio Brazos Rd., Aztec, NM 87410  
District IV  
1220 S. St. Francis Dr., Santa Fe, NM 87505

RECEIVED

APR 27 2010

HOBBS

State of New Mexico  
Energy, Minerals & Natural Resources Department  
OIL CONSERVATION DIVISION  
1220 South St. Francis Dr.  
Santa Fe, NM 87505

Form C-102  
Revised October 12, 2005  
Submit to Appropriate District Office  
State Lease - 4 Copies  
Fee Lease - 3 Copies

☐ AMENDED REPORT

### WELL LOCATION AND ACREAGE DEDICATION PLAT

'API Number <b>30-025-34629</b>	'Pool Code <b>97630</b> ✓	'Pool Name <b>Bell Lake Delaware NE</b>
'Property Code <b>5437-24635</b>	'Property Name <b>Bell Lake Unit</b>	'Well Number <b>20</b>
'OGRID No. <b>012361</b>	'Operator Name <b>Kaiser-Francis Oil Company</b>	'Elevation <b>3424 GL</b>

#### <sup>10</sup> Surface Location

UL or lot no.	Section	Township	Range	Lot Idn	Feet from the	North/South line	Feet from the	East/West line	County
E	32	22S	34E	-	1650	North	660	West	Lea

#### <sup>11</sup> Bottom Hole Location If Different From Surface n/a

UL or lot no.	Section	Township	Range	Lot Idn	Feet from the	North/South line	Feet from the	East/West line	County
"Dedicated Acres <b>40</b>	"Joint or Infill <b>N</b>	"Consolidation Code <b>-</b>	"Order No. <b>-</b>						

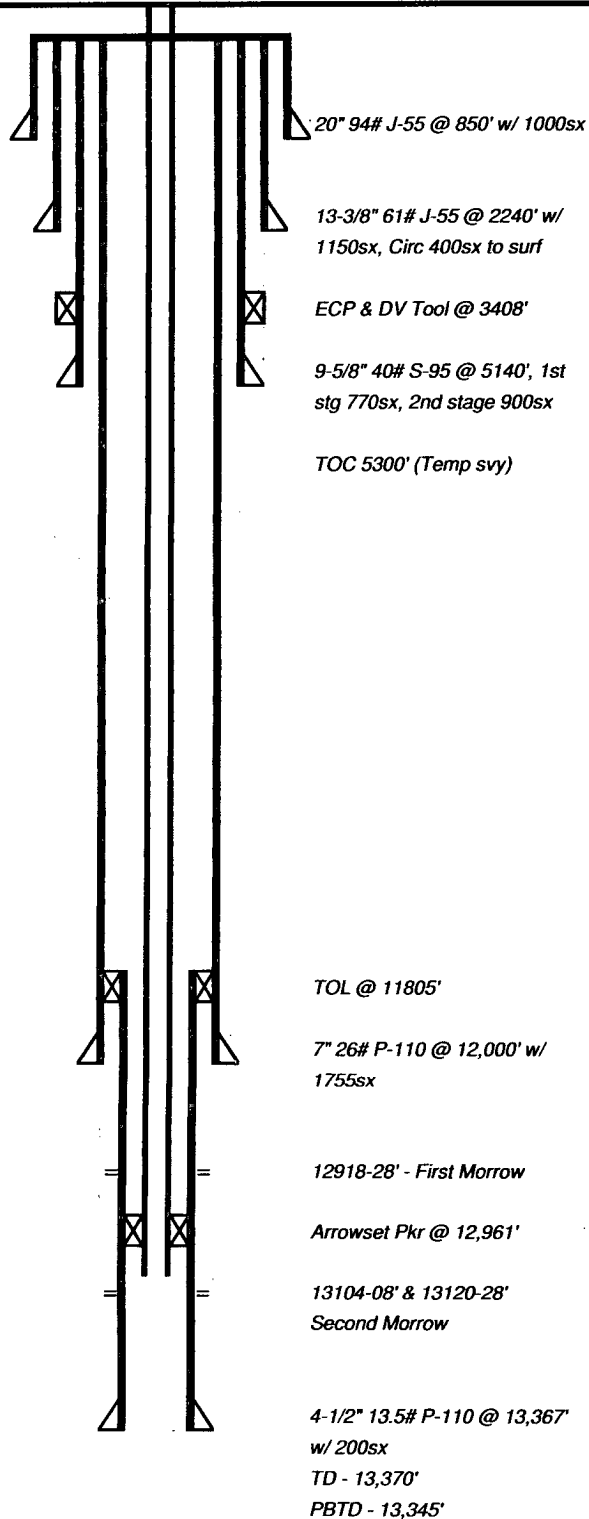
No allowable will be assigned to this completion until all interests have been consolidated or a non-standard unit has been approved by the division.

<div>16</div> <div>1650'</div> <div>660'</div> <div>32</div>	<div><sup>17</sup> OPERATOR CERTIFICATION I hereby certify that the information contained herein is true and complete to the best of my knowledge and belief, and that this organization either owns a working interest or unleased mineral interest in the land including the proposed bottom hole location or has a right to drill this well at this location pursuant to a contract with an owner of such a mineral or working interest, or to a voluntary pooling agreement or a compulsory pooling order heretofore entered by the division. <div>Signature: <i>Charlotte Van Valkenburg</i> Date: <b>4/23/10</b></div><div>Printed Name: <b>Charlotte Van Valkenburg</b></div></div>			
	<div><sup>18</sup> SURVEYOR CERTIFICATION I hereby certify that the well location shown on this plat was plotted from field notes of actual surveys made by me or under my supervision, and that the same is true and correct to the best of my belief. <div>Date of Survey: _____ Signature and Seal of Professional Surveyor: _____ Certificate Number: _____</div></div>			

**Kaiser-Francis (Devon)****Bell Lake Unit 20**

**Location:** 32 22S 34E - 1650' FNL 660' FWL  
**Field:** Bell Lake Delaware South  
**County:** Lea  
**State:** New Mexico  
**Elevation:** GL - 3429' KB - 3448'

**API:** 30-025-34629  
**Spud Date:** 9/15/99  
**Completed:** 12/5/99  
**Diagram Updated:** 4/7/10



**Tubing Desc:** P-110 AB Mod, Flow sub, 1 jnt, 1.81" R-nip w/ 1.76" no-go, 2 jnts, Packer, T-2 on-off w/ 1.81" F-nip, 2 jnts, 6' sub, 408 jnts, 4' sub

**Work History:**

**Completion** - RIH w/ mill on tbg, Drill cmt off Inr top, Clean to 13,345', RIH w/ bit & scraper to 13,319', Pickle pipe to 12,700', Disp w/ 3% KCl, Run GR, RAL & CCL from TD to TOL, Run PDK-100 from TD to TOL, RIH w/ TCP & pkr on WL, Set @ 12831' to perf 12,918-28', Test IH w/ tbg, Latch on-off tool, Tst pkr to 2000#, Swab down to 10,000', Drop bar, No change on tbg or csg, Fish bar, Drop bar, No change, Swab down, No entry, Rel pkr, POOH, Guns did not fire, Re-run TCP, pkr & tbg, Fire guns, Flow well, Rel guns, Chase 200' past perms, Run FBHP grad & 4 point

**12/30/06** - Blow down, Rel pkr, Pmp 30bbbls 2%, POOH w/ tbg & pkr, RIH w/ bit & scraper to 13,266', RIH w/ tbg, POOH LD, RIH w/ TCP on tbg, Space out, Set pkr @ 12,961', Swab down to 10,000', Drop bar, Perf 13,104-8' & 13,120-8', Swab, Well on vac after runs, No entry, Rel guns, Chase to 13,200', Acidize w/ 2000gal 7-1/2% & BS, AIR 3bpm @ 6400#, ISIP 5800#, Flow back 10bbl & died, Swab