

# RECEIVED

DISTRICT I  
1826 N. French Dr., Hobbs, NM 88240

DISTRICT II  
1301 W. Grand Ave., Artesia, NM 88210

DISTRICT III  
1000 Rio Brazos Rd., Aztec, NM 87410

DISTRICT IV  
1220 St. Francis Dr., Santa Fe, NM 87505

State of New Mexico  
Energy, Minerals and Natural Resources Department

OIL CONSERVATION DIVISION  
1220 South St. Francis Drive  
Santa Fe, NM 87505

MAR 17 2009

Form C-1021  
Revised October 12, 2005

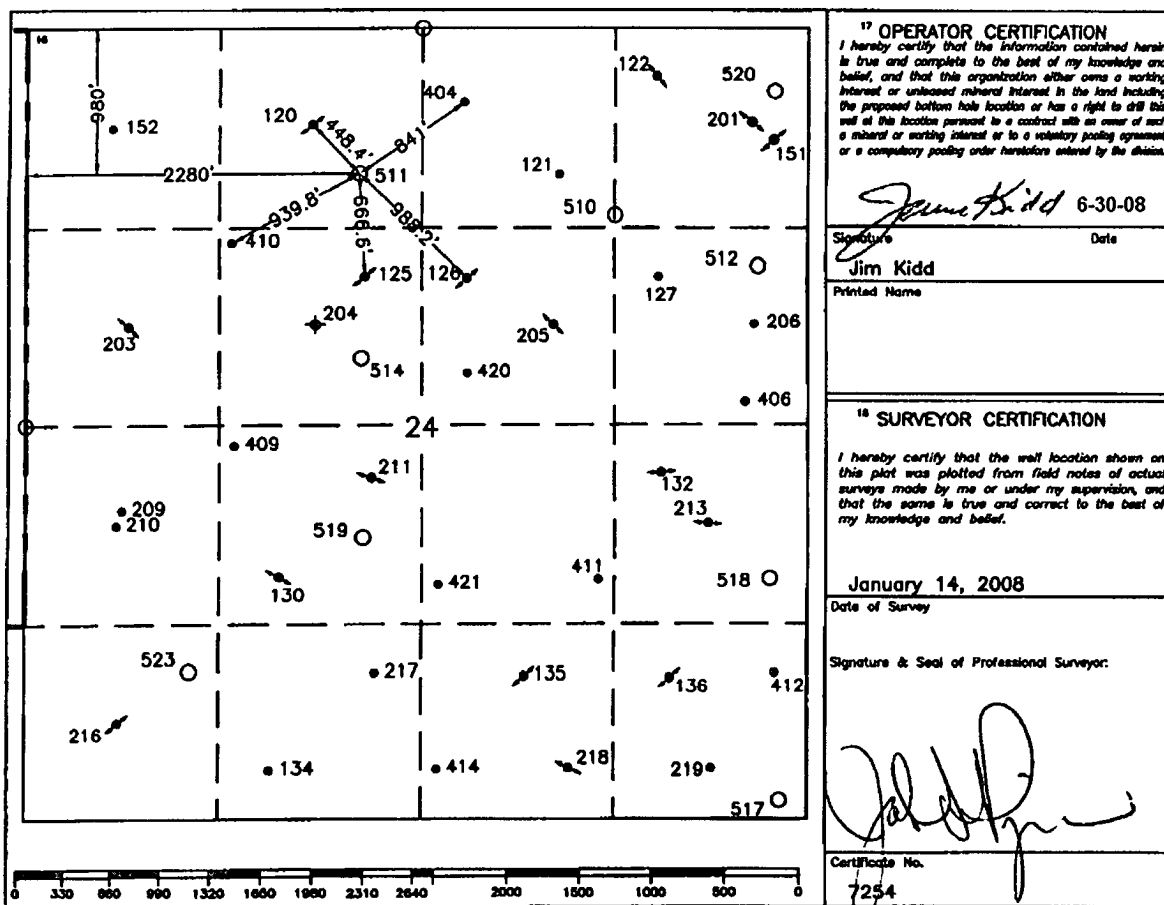
Submit to Appropriate District Office  
State Lease-4 copies  
Fee Lease-3 copies

## WELL LOCATION AND ACREAGE DEDICATION PLAT

☐ AMENDED REPORT

|   |                      |   |                      |  |                                  |
|---|----------------------|---|----------------------|--|----------------------------------|
| 1 API Number                                      |                      | 2 Pool Code<br><b>33820</b>                           |                      | 3 Pool Name<br><b>Jalmit; Langlie Mattix</b> |                                  |
| 4 Property Code                                   |                      | 5 Property Name<br><b>Cooper Jal Unit</b>             |                      |  | 6 Well Number<br><b>511</b>      |
| 7 OGRID No.<br><b>193003</b>                      |                      | 8 Operator Name<br><b>TORCH ENERGY SERVICES, INC.</b> |                      |  | 9 Elevation<br><b>3322'</b>      |
| 10 Surface Location                               |                      |   |                      |  |                                  |
| UL or lot no.<br><b>C</b>                         | Section<br><b>24</b> | Township<br><b>24-S</b>                               | Range<br><b>36-E</b> | Lot Idn<br><b>980'</b>                       | North/South line<br><b>North</b> |
|   |                      |   |                      | Feet from the<br><b>2280'</b>                | East/West line<br><b>West</b>    |
|   |                      |   |                      | County<br><b>Lea</b>                         |                                  |
| 11 Bottom Hole Location If Different From Surface |                      |   |                      |  |                                  |
| UL or lot no.                                     | Section              | Township  | Range                | Lot Idn                                      | Feet from the                    |
|   |                      |   |                      | North/South line                             | Feet from the                    |
|   |                      |   |                      | East/West line                               | County                           |
| 12 Dedicated Acres<br><b>40</b>                   |                      | 13 Joint or Infill                                    |                      | 14 Consolidation Code                        |                                  |
|   |                      |   |                      | 15 Order No.                                 |                                  |

NO ALLOWABLE WILL BE ASSIGNED TO THIS COMPLETION UNTIL ALL INTERESTS HAVE BEEN CONSOLIDATED  
OR A NON-STANDARD UNIT HAS BEEN APPROVED BY THE DIVISION.



17 OPERATOR CERTIFICATION  
I hereby certify that the information contained herein is true and complete to the best of my knowledge and belief, and that this organization either owns a working interest or unleased mineral interest in the land including the proposed bottom hole location or has a right to drill this well at this location pursuant to a contract with an owner of such a mineral or working interest or to a voluntary pooling agreement or a compulsory pooling order heretofore entered by the division.

*Jim Kidd* 6-30-08

Signature  
**Jim Kidd**

Printed Name

## 18 SURVEYOR CERTIFICATION

I hereby certify that the well location shown on this plat was plotted from field notes of actual surveys made by me or under my supervision, and that the same is true and correct to the best of my knowledge and belief.

January 14, 2008

Date of Survey

Signature & Seal of Professional Surveyor:

Certificate No.

7254

○ = Staked Location • = Producing Well ● = Injection Well ◇ = Water Supply Well ◆ = Plugged & Abandon Well  
⊙ = Found Section Corner, 2 or 3" Iron Pipe & GLO B.C. ○ = Found 1/4 Section Corner, 1" Iron Pipe & GLO B.C.

## ADDITIONAL INFORMATION ON THE LOCATION

|                                      |                      |                                     |                 |
|--------------------------------------|----------------------|-------------------------------------|-----------------|
| State Plane Coordinates              |                      |                                     |                 |
| Northing 440992.80 (1927= 440933.91) |                      | Easting 885680.18 (1927= 844493.58) |                 |
| Latitude 32°12'26.870"               |                      | Longitude 103°13'12.086"            |                 |
| Zone                                 | North American Datum | Combined Grid Factor                | Coordinate File |
| East                                 | 1983/86              | 0.99988612                          | Coop_Jal.Crd    |
| Drawing File                         |                      | Field Book                          |                 |
| Coop_Jal.Dwg                         |                      | Lea #24, Pg. 21                     |                 |