

UNITED STATES
DEPARTMENT OF THE INTERIOR
BUREAU OF LAND MANAGEMENT

RECEIVED

FORM APPROVED
OMB No. 1004-0135
Expires: January 31, 2004NOV 09 2010
SUNDRY NOTICES AND REPORTS ON WELLS
Do not use this form for proposals to drill or to re-enter an abandoned well. Use Form 3160-3 (APD) for such proposals.

SUBMIT IN TRIPLICATE - Other instructions on reverse side

1. Type of Well

☒ Oil Well ☐ Gas Well ☐ Other

2. Name of Operator

Mewbourne Oil Company 14744

3a. Address

PO Box 5270 Hobbs, NM 88241

3b. Phone No. (include area code)

575-393-5905

4. Location of Well (Footage, Sec., T, R., M., or Survey Description)

330' FSL & 380' FEL, Sec 8-T26S-R32E Unit Letter P (Surface)

330' FNL & 380' FEL, Sec 8-T26S-R32E Unit Letter A (BHL)

5. Lease Serial No.

NM-113967 (SL & BHL)

6. If Indian, Allottee or Tribe Name

7. If Unit or CA/Agreement, Name and/or No.

8. Well Name and No.

Red Hills West 8 Fed #1H

9. API Well No.

30-025-39902

10. Field and Pool, or Exploratory Area

Wildcat Bone Spring

11. County or Parish, State

Lea County, NM

12. CHECK APPROPRIATE BOX(ES) TO INDICATE NATURE OF NOTICE, REPORT, OR OTHER DATA

TYPE OF SUBMISSION

TYPE OF ACTION

☐ Notice of Intent☒ Subsequent Report☐ Final Abandonment Notice☐ Acidize☐ Alter Casing☐ Casing Repair☐ Change Plans☐ Convert to Injection☐ Deepen☐ Fracture Treat☐ New Construction☐ Plug and Abandon☐ Plug Back☐ Production (Start/Resume)☐ Reclamation☐ Recomplete☐ Temporarily Abandon☐ Water Disposal☐ Water Shut-Off☐ Well Integrity☐ Other Spud & Casing

3. Describe Proposed or Completed Operation (clearly state all pertinent details, including estimated starting date of any proposed work and approximate duration thereof. If the proposal is to deepen directionally or recompleate horizontally, give subsurface locations and measured and true vertical depths of all pertinent markers and zones. Attach the Bond under which the work will be performed or provide the Bond No. on file with BLM/BIA. Required subsequent reports shall be filed within 30 days following completion of the involved operations. If the operation results in a multiple completion or recompleation in a new interval, a Form 3160-4 shall be filed once testing has been completed. Final Abandonment Notices shall be filed only after all requirements, including reclamation, have been completed, and the operator has determined that the site is ready for final inspection.)

09/30/10..MI & spud 17 1/2" hole. TD hole at 1104'. Ran 1104' 13 3/8" 48# H40 ST&C csg. Cemented with 650 sks Class C (35:65:4) with additives. Mixed @ 12.5 #/g w/ 2.15 yd. Tail w/200 sks Class C w/2% CaCl2. Mixed @ 14.8 #/g w/ 1.34 yd. Plug down @ 12:00 pm 10/01/10. Circ 115 sks to pit. At 12:15 pm on 10/02/10, tested BOPE to 1500# & casing to 1250# for 30 mins, held OK. Chart & schematic attached. Drilled out with 12 1/4" bit.

10/11/10. TD'ed 12 1/4" hole @ 4802'. Ran 4802' 9 5/8" 36/40# K55/J55 LT&C Csg. Cemented with 1500 sks BJ Lite Class C (35:65:4) w/additives. Mixed @ 12.5 #/g w/ 2.03 yd. Tail w/400 Class C w/0.15% R3. Mixed @ 14.8 #/g w/ 1.33 yd. Plug down @ 7:00 am 10/12/10. Did not circ cmt. Slow rate lift pressure @ 935# @ 3 BPM. Plug down @ 7:00 pm 10/12/10. WOC. Ran temp survey indication TOC @ 300'. RIH with 1" pipe. Tag at 235'. Cmt in 1 stage with 100 sks Thixad Class H Mixed @ 14.6 #/g w/1.52 yd. Circ 7 sks cement to pit. WOC 18 hrs. 10/13/10 tested BOPE to 3000# & tested annular to 1500#. Chart & schematic attached. Drilled out with 8 3/4" bit.

14. I hereby certify that the foregoing is true and correct
Name (Printed/Typed)

Jackie Lathan

Title Hobbs Regulatory

Signature

Date 10/18/10

THIS SPACE FOR FEDERAL OR STATE OFFICE USE

Approved by (Signature)

Name: PETROLEUM ENGINEER
(Printed/Typed)

Title

NOV 10 2010

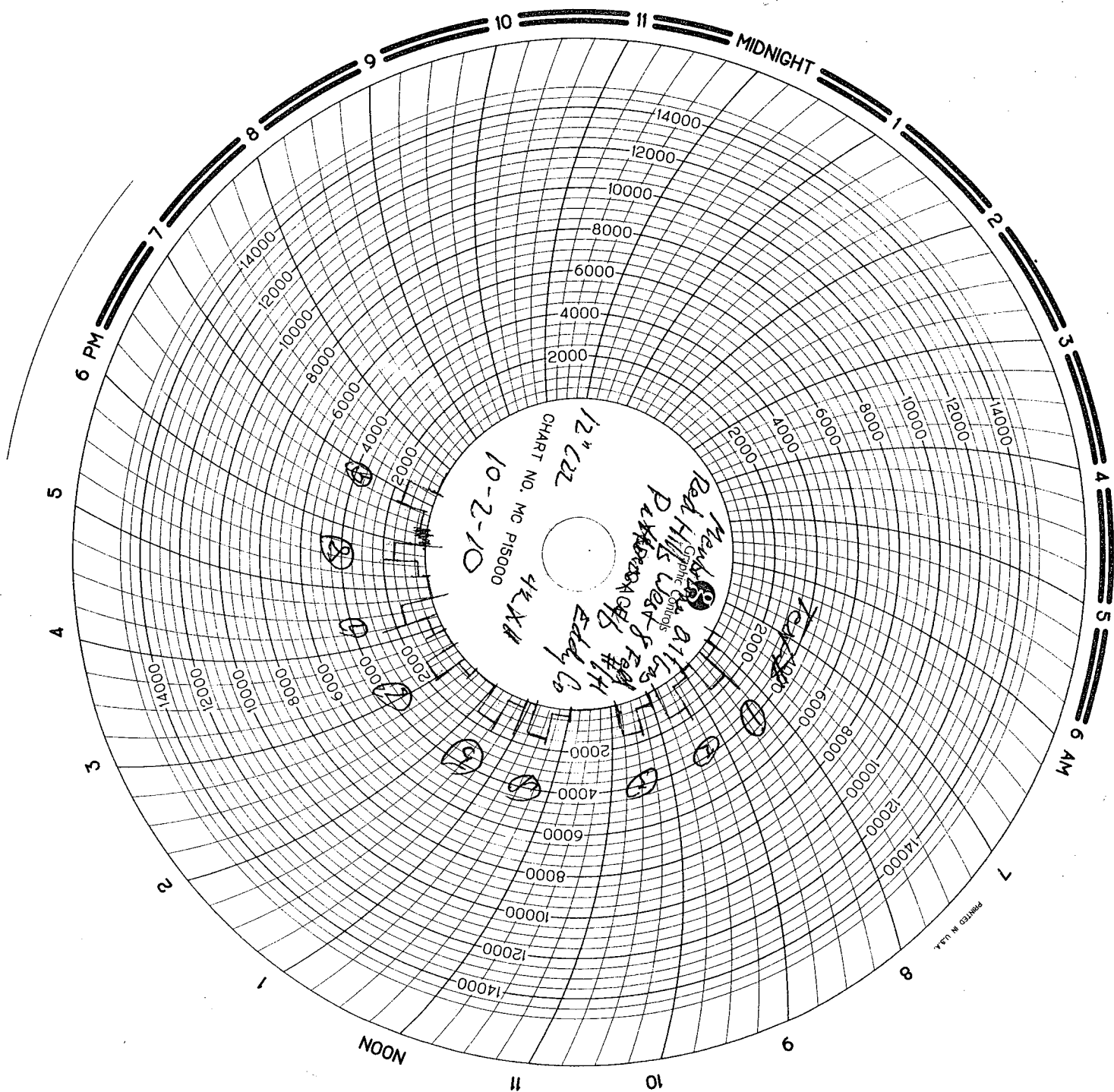
Conditions of approval, if any, are attached. Approval of this notice does not warrant or certify that the applicant holds legal or equitable title to those rights in the subject lease which would entitle the applicant to conduct operations thereon.

Office

Date

Title 18 U.S.C. Section 1001 and Title 43 U.S.C. Section 1212, make it a crime for any person knowingly and willfully to make to any department or agency of the United States any false, fictitious or fraudulent statements or representations as to any matter within its jurisdiction.

(Continued on next page)



MAN WELDING SERVICES, INC

Company Mewbame O/S Gas Date 10-2-10
Lease Red Hills West 8 Fed #1/H County Eddy
Drilling Contractor PAH 46 Plug & Drill Pipe Size 12" O.D. 4 1/2" X H

Accumulator Function Test - OO&GO#2

To Check - USABLE FLUID IN THE NITROGEN BOTTLES (III.A.2.c.i. or ii or iii)

- Make sure all rams and annular are open and if applicable HCR is closed.
- Ensure accumulator is pumped up to working pressure! **(Shut off all pumps)**
 1. Open HCR Valve. (If applicable)
 2. Close annular.
 3. Close **all** pipe rams.
 4. Open one set of the pipe rams to simulate closing the blind ram.
 5. For 3 ram stacks, open the annular to achieve the 50+ % safety factor. (5M and greater systems).
 6. **Record remaining pressure** 1400 psi. **Test Fails if pressure is lower than required.**
 - a. {950 psi for a 1500 psi system} b. {1200 psi for a 2000 & 3000 psi system }
 7. If annular is closed, open it at this time and close HCR.

To Check - PRECHARGE ON BOTTLES OR SPHERICAL (III.A.2.d.)

- Start with manifold pressure at, or above, maximum acceptable pre-charge pressure:
 - a. {800 psi for a 1500 psi system} b. {1100 psi for 2000 and 3000 psi system}
- 1. Open bleed line to the tank, slowly. (**gauge needle will drop at the lowest bottle pressure**)
 2. Close bleed line. Barely bump electric pump and see what pressure the needle jumps up to.
 3. **Record pressure drop** 1020 psi. **Test fails if pressure drops below minimum.**
- **Minimum:** a. {700 psi for a 1500 psi system} b. {900 psi for a 2000 & 3000 psi system}

To Check - THE CAPACITY OF THE ACCUMULATOR PUMPS (III.A.2.f.)

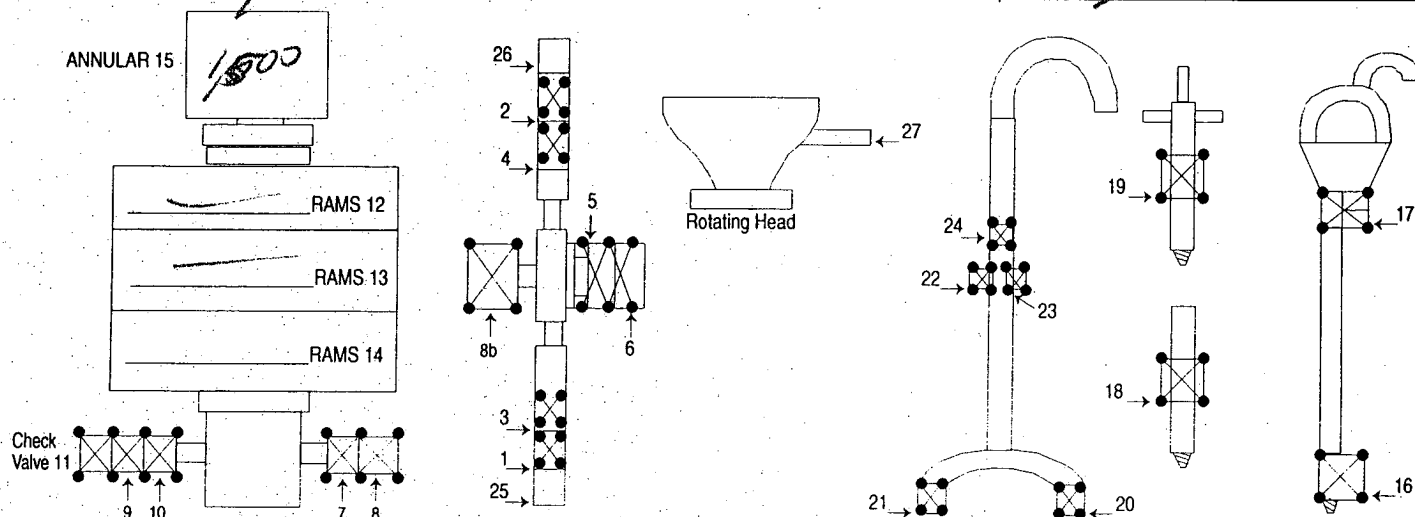
- Isolate the accumulator bottles or spherical from the pumps & manifold.
- Open the bleed off valve to the tank, {manifold psi should go to 0 psi} close bleed valve.
 1. Open the HCR valve, {if applicable}
 2. Close annular
 3. With **pumps** only, time how long it takes to regain the required manifold pressure.
 4. **Record elapsed time** 60 sec. **Test fails if it takes over 2 minutes:**
 - a. {950 psi for a 1500 psi system} b. {1200 psi for a 2000 & 3000 psi system}



INVOICE

B 1 1 7 0 7

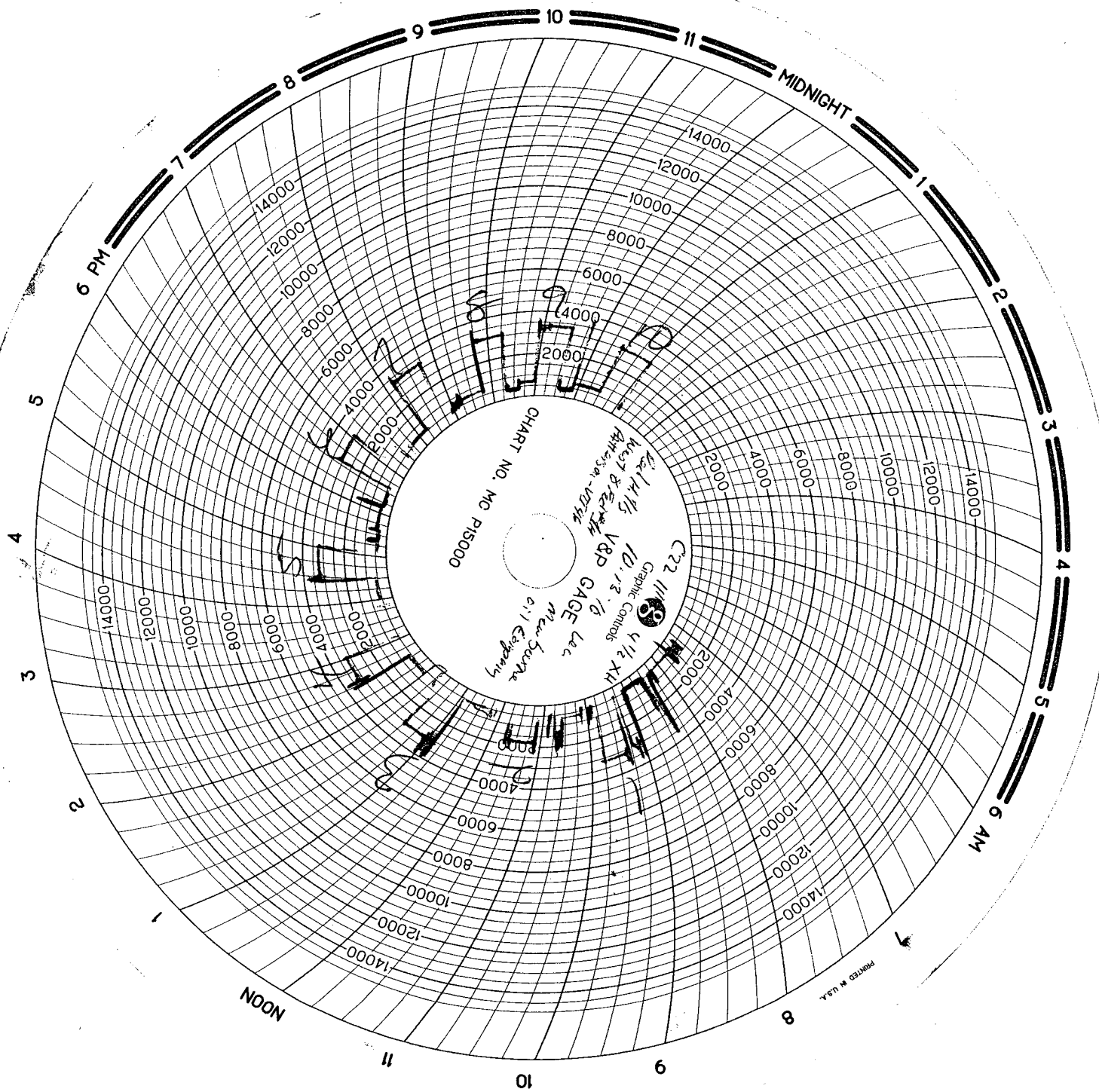
Company Mewbourne Oil & Gas Date 10-2-10 Start Time 6:00 ☒ am ☐ pm
Lease Red Hills West 8 Fed #1H County Eddy State NM
Company Man _____
Wellhead Vendor _____ Tester Sat Arantes
Drig. Contractor Pott 46 Rig # 46
Tool Pusher _____
Plug Type C22 Plug Size 12" Drill Pipe Size 4 1/2 x H
Casing Valve Opened yes Check Valve Open yes

[illegible]

8 HR@ \$1.150⁰⁰
5 HR@ 1.00⁰⁰ = 5.00⁰⁰
Mileage 110 @ \$1.22⁰⁰ = 134.20⁰⁰

MASTER PRINTERS 575.396.3661

SUB TOTAL 1810⁰⁰
TAX 100⁹¹
TOTAL 1910⁹¹



MAN WELDING SERVICES, INC

Company Membrane Drilling Date 10.17.10

Lease Red Hills West 8F 2nd County Lea

Drilling Contractor Patterson UT 46 Plug & Drill Pipe Size 62 11" 4 1/2 xH

Accumulator Function Test - OO&GO#2

To Check - USABLE FLUID IN THE NITROGEN BOTTLES (III.A.2.c.i. or ii or iii)

$$18" \times 7.7 = 138$$

- Make sure all rams and annular are open and if applicable HCR is closed.
- Ensure accumulator is pumped up to working pressure! (**Shut off all pumps**)
 $14 \times 36 \times 128 = 28096 \text{ gal} (36 = 7.7 \text{ gal per 1"})$
- ✓ 1. Open HCR Valve. (If applicable)
- ✓ 2. Close annular. $14 - 10 \text{ gal Bottles} = 70 \text{ gal}$
- ✓ 3. Close **all** pipe rams.
- 4. Open one set of the pipe rams to simulate closing the blind ram.
- 5. For 3 ram stacks, open the annular to achieve the 50+ % safety factor. (5M and greater systems).
- 6. **Record remaining pressure** 130 psi. **Test Fails if pressure is lower than required.**
- a. {950 psi for a 1500 psi system} b. {1200 psi for a 2000 & 3000 psi system}
- 7. If annular is closed, open it at this time and close HCR.

To Check - PRECHARGE ON BOTTLES OR SPHERICAL (III.A.2.d.)

~~PRECHARGE~~
750 PSI
LOW

- Start with manifold pressure at, or above, maximum acceptable pre-charge pressure:
a. {800 psi for a 1500 psi system} b. {1100 psi for 2000 and 3000 psi system}
- 1. Open bleed line to the tank, slowly: (**gauge needle will drop at the lowest bottle pressure**)
- 2. Close bleed line. Barely bump electric pump and see what pressure the needle jumps up to.
- 3. **Record pressure drop** 750 psi. **Test fails if pressure drops below minimum.**
- **Minimum:** a. {700 psi for a 1500 psi system} b. {900 psi for a 2000 & 3000 psi system}

To Check - THE CAPACITY OF THE ACCUMULATOR PUMPS (III.A.2.f.)

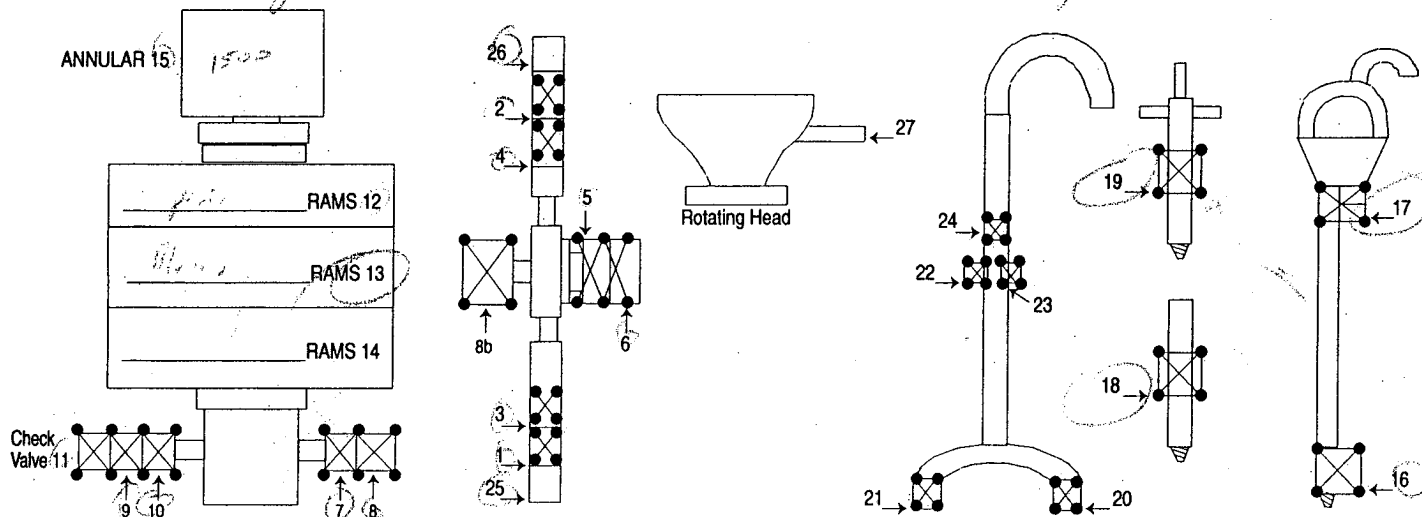
- Isolate the accumulator bottles or spherical from the pumps & manifold.
- Open the bleed off valve to the tank, {manifold psi should go to 0 psi} close bleed valve.
- ✓ 1. Open the HCR valve, {if applicable}
- ✓ 2. Close annular
- 3. With **pumps** only, time how long it takes to regain the required manifold pressure.
- 4. **Record elapsed time** 1:40 **Test fails if it takes over 2 minutes.**
- a. {950 psi for a 1500 psi system} b. {1200 psi for a 2000 & 3000 psi system}



INVOICE

NO B 1 1558

Company Newbome Oil Company Date 10-13-10 Start Time 8:00 ☒ am ☐ pm
Lease Red Hill, West 9A-2 #44 County Law State WV
Company Man DAVID B
Wellhead Vendor _____ Tester Chris C. Kelley, K
Drig. Contractor Potlison Rig # 46
Tool Pusher DOUB
Plug Type 122 Plug Size 11" Drill Pipe Size 6 1/2 844
Casing Valve Opened Yes Check Valve Open Yes

[illegible]

Mileage 188 @ 1.00

MASTER PRINTERS 575.396.3661

SUB TOTAL 1438
TAX 79.09
TOTAL 1517.09