

District I

1625 N. French Dr., Hobbs, NM 88240

District II

1301 W. Grand Ave., Artesia, NM 88210

District III

1000 Rio Brazos Rd., Aztec, NM 87410

District IV

1220 S. St. Francis Dr., Santa Fe, NM 87505

**RECEIVED**  
**NOV 17 2010**  
**HOBBSOCD**

OIL CONSERVATION DIVISION

1220 South St. Francis Dr.

Santa Fe, NM 87505

WELL API NO.

30-025-25708

5. Indicate Type of Lease

STATE ☒ FEE ☐

6. State Oil & Gas Lease No.

7. Lease Name or Unit Agreement Name  
CENTRAL VACUUM UNIT

8. Well Number 81

9. OGRID Number 4323

10. Pool name or Wildcat  
VACUUM GRAYBURG S/A

SUNDRY NOTICES AND REPORTS ON WELLS

(DO NOT USE THIS FORM FOR PROPOSALS TO DRILL OR TO DEEPEN OR PLUG BACK TO A DIFFERENT RESERVOIR. USE "APPLICATION FOR PERMIT" (FORM C-101) FOR SUCH PROPOSALS.)

1. Type of Well: Oil Well ☐ Gas Well ☐ Other INJECTOR

2. Name of Operator

CHEVRON U.S.A. INC.

3. Address of Operator

15 SMITH ROAD, MIDLAND, TEXAS 79705

4. Well Location

Unit Letter L: 1332 feet from the SOUTH line and 1310 feet from the WEST line

Section 36 Township 17-S Range 34-E NMPM County LEA

11. Elevation (Show whether DR, RKB, RT, GR, etc.)

12. Check Appropriate Box to Indicate Nature of Notice, Report or Other Data

NOTICE OF INTENTION TO:

PERFORM REMEDIAL WORK ☐ PLUG AND ABANDON ☐  
TEMPORARILY ABANDON ☐ CHANGE PLANS ☐  
PULL OR ALTER CASING ☐ MULTIPLE COMPL ☐  
DOWNHOLE COMMINGLE ☐

SUBSEQUENT REPORT OF:

REMEDIAL WORK ☐ ALTERING CASING ☐  
COMMENCE DRILLING OPNS. ☐ P AND A ☐  
CASING/CEMENT JOB ☐

OTHER: INTENT TO CLEANOUT, RE-PERF & ACIDIZE

OTHER:

13. Describe proposed or completed operations. (Clearly state all pertinent details, and give pertinent dates, including estimated date of starting any proposed work). SEE RULE 1103. For Multiple Completions: Attach wellbore diagram of proposed completion or recompletion.

CHEVRON U.S.A. INC. INTENDS TO CLEAN OUT FOR FILL/BLOCKAGE, AND ADD PAY IN THE UPPER SAN ANDRES FOR INCREASED INJECTION. THE WELL IS CURRENTLY SHUT-IN.

PLEASE FIND ATTACHED, THE INTENDED PROCEDURE, WELLBORE DIAGRAM, AND C-144 INFORMATION.

Spud Date:

Rig Release Date:

I hereby certify that the information above is true and complete to the best of my knowledge and belief.

SIGNATURE

Denise Pinkerton

TITLE

REGULATORY SPECIALIST

DATE 11-16-2010

Type or print name DENISE PINKERTON

E-mail address: leakejd@chevron.com

PHONE: 432-687-7375

**For State Use Only**

APPROVED BY:

[Signature]

TITLE

State Rep

DATE 11-23-10

Conditions of Approval (if any):

CVU No. 81  
API No. 30-025-25708  
Vacuum (Grayburg-San Andres) Field  
Lea County, NM

### Workover Procedure

1. Rig up well for flowback. If well is flowing back gas, flow well back until surface pressure is below 500 psi shut-in pressure. If well is flowing back water, flow well back until surface pressure is below 250 psi shut-in pressure.
2. Rig up pulling unit and kill well.
3. ND wellhead. NU BOP and annular. Release injection packer and POOH w/ 1 std tbg, PU left-hand set compression packer and RIH 1 std. Set compression packer and test pipe rams to lo/hi of 250psi and 500psi for 5 minutes each. Open pipe rams and close annular and test annular to lo/hi of 250psi and 500psi for 5 minutes.
4. TOH w/ 2-3/8" fiber line tubing (last reports show the injection tubing to be Rice Duo-line brand tbg).
5. TIH w/ 3 7/8" cone buster mill and 6 - 3 1/8" drill collars on 2 3/8" L-80 workstring.
6. Note: there may be casing problems at 4,320'. Upon tag, rig up reverse unit/power swivel and clean out to 4,741' (PBTD), POOH.
7. Dump 3,000# of 20/40 sand down csg.
8. RIH w/ 2 3/8" notched collar on 2 3/8" WS, tag up sand and wash to 4,460'. Circulate the hole clean and TOOH. Rig down reverse unit.
9. Rig up wireline truck. Rig up lubricator and test to 2000 psi. Get on depth with CRC wireline Services GR-DSCN-CCL log dated 3/27/79. Note: casing does not appear to have a short joint.
10. RIH w/ 2-1/2" perforating gun (undersized due to bad casing) and perforate the 4-1/2" casing w/ 2 JSPF as follows: 4412' - 22', then 4320' - 60'. Use maximum depth penetration charges. Rig down wireline truck.
11. PU 4-1/2" treating packer on 2-3/8" L-80 workstring, Hydrotest WS in hole to 5,500psi. Set packer at 4250'.
12. Request a P1000 pump from Petroplex for 10 bbl/min rate. Acidize San Andres perms 4320'-4422' w/ 5,000 gallons 20% NEFE HCl in one stage, **MAX PRESS=5,000psi**, pump at as high a rate as possible without exceeding 5,000psi. Shut in one hour and flow back load.
13. TOOH w/ workstring and packer.
14. TIH w/ 3 7/8" MT bit and 6 - 3 1/8" drill collars on 2 3/8" WS and C/O cmt/sand/fill to 4741' (PBTD), TOOH/LD WS.
15. TIH w/ 1.43" "F" profile nipple, 2-3/8" X 10' External Plastic Coated and Fiberlined tubing sub, 4-1/2" injection packer and re-run 2-3/8" fiber lined injection tubing (Hire out inspector for fiber lined tubing while running. Note profile size and type in Wellview tubing summary.)
16. Reverse circulate packer fluid around the annulus.

CVU 81 - Workover Procedure, page 2

17. Set packer at 4,260'.
18. Perform preliminary MIT test to 500psi for 30 min.
19. ND BOP. NU wellhead. Rig down pulling unit.
20. Perform MIT test. Contact ALCR with test results.
21. Place well on water injection for 2 weeks.
22. WAG well to CO2.

PTB 9/7/10

TJG 9/18/10

Contacts:

Petroleum Engineer – Paul Brown 432-687-7351  
Remedial Engineer – Ty Gill 432-853-3652  
Peak Packers – Sam Prieto 575-531-7704  
Petroplex Acidizing – Steve Pendelton 432-556-4211  
Baker Atlas – Doug Lunsford 432-559-0396  
Baker Petrolite – Tim Gray 575-910-9390  
Production Team Leader – Larry Ridenour 575-631-9110  
ALCR – Carlos Valenzuela 575-390-9615

**CURRENT  
WELLBORE DIAGRAM**

Created: 6/23/2005 By: GAA  
 Updated: 9/8/2008 By: Ncayce  
 Updated: 5/6/2009 By: PTB  
 Updated: 8/26/2009 By: Ncayce  
 Lease: Central Vacuum Unit  
 Surface Location: 1332 FSL & 1310 FWL  
 Bottomhole Location: Same  
 County: Lea St: NM  
 Current Status: Active Injector  
 Directions to Wellsite: Buckeye, New Mexico

Well No.: 81  
 Unit Ltr: L  
 Unit Ltr: L  
 St Lease: B-2146  
 Elevation: 3998' GL  
 Field: Vacuum  
 Sec: 36  
 Sec: 36  
 API: 30-025-25708  
 CHVNO: EP8748  
 TSHP/Range: 17S-34E  
 TSHP/Range:  
 Cost Center: BCT494500

**Surface Csg.**

Size: 13 3/8"  
 Wt.: 48#, H-40  
 Set @: 355'  
 Sxs cmt: 400  
 Circ: Yes  
 TOC: Surface  
 Hole Size: 17 1/2"

KB: 4010  
 DF: 4009  
 GL: 3998  
 Original Spud Date: 3/3/1979  
 Original Compl. Date: 4/5/1979

**Intermediate Csg. #1**

Size: 9 5/8"  
 Wt.: 32#, K-55  
 Set @: 1500'  
 Sxs cmt: 800  
 Circ: Yes  
 TOC: Surface  
 Hole Size: 12 1/4"

**Intermediate Csg. #2**

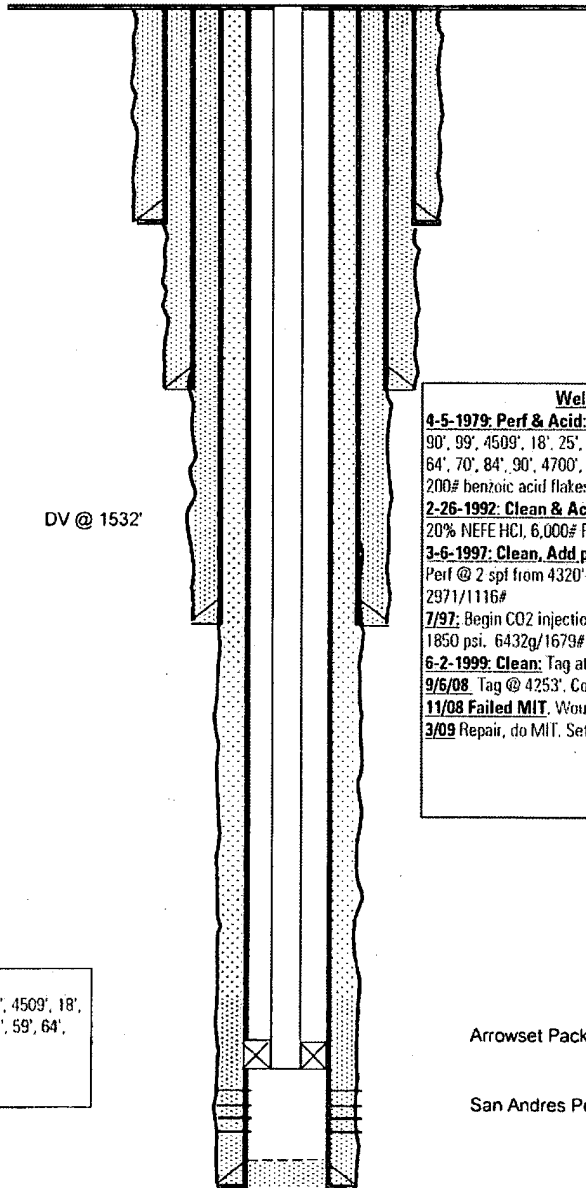
Size: 7"  
 Wt.: 23#, K-55  
 Set @: 2763 ft DV @ 1532'  
 Sxs cmt: 650  
 Circ: Yes  
 TOC: Surface  
 Hole Size: 8 3/4"

**Production Csg.**

Size: 4 1/2"  
 Wt.: 10.5#, K-55  
 Set @: 4800'  
 Sxs cmt: 800  
 Circ: Yes  
 TOC: Surface  
 Hole Size: 6 1/8"

**Perforation detail:**

4/5/1979: 4322', 30', 44', 51', 60', 4416', 18', 90', 99', 4509', 18', 25', 74', 79', 91', 97', 4604', 10', 18', 24', 34', 42', 48', 59', 64', 70', 84', 90', 4700', 05' (2 SPF)  
 3-6-1997: 4320'-4335'



**Well & Failure History**

4-5-1979: **Perf & Acid:** Add perfs @ 2 spf @ 4322', 30', 44', 51', 60', 4416', 18', 90', 99', 4509', 18', 25', 74', 79', 91', 97', 4604', 10', 18', 24', 34', 42', 48', 59', 64', 70', 84', 90', 4700', 05'. Acid with 7500 gls 15% NEA & 400# rock salt & 200# benzoic acid flakes.  
 2-26-1992: **Clean & Acid:** Cleaned with bailer to 4750'. Acid with 10,000 gls 20% NEFE HCl, 6,000# Rock salt, & 238 ball sealers. 2001/840#  
 3-6-1997: **Clean, Add perfs, & Acid:** Tag to 4333' and clean with bit to 4723'. Perf @ 2 spf from 4320'-4335'. Acid new perfs with 6,000 gls 15% NEFE HCl. 2971/1116#  
 7/97: Begin CO2 injection @ est. rate of 3610 mcf/d. Max allowed pressure is 1850 psi. 6432g/1679#  
 6-2-1999: **Clean:** Tag at 4352'. Clean 3 7/8" bit to 4741'. 1018/1700#  
 9/6/08: Tag @ 4253'. Couldn't get thru pkr. Pkr @ 4265'.  
 11/08 Failed MIT. Would not hold pressure during test. Repair due 2/16/09.  
 3/09 Repair, do MIT. Set pkr @ 4264'

Arrowset Packer @ 4264'

San Andres Perfs: 4320' - 4705'

PBTD: 4741' ft  
 TD: 4800 ft