

District I
1625 N. French Dr., Hobbs, NM 88240
District II
1301 W. Grand Avenue, Artesia, NM 88210
District III
1000 Rio Brazos Road, Aztec, NM 87410
District IV
1220 S. St. Francis Dr., Santa Fe, NM 87505

State of New Mexico
Energy Minerals and Natural Resources
RECEIVED
NOV 05 2010 Oil Conservation Division
1220 South St. Francis Dr.
HOBBSOCD Santa Fe, NM 87505

Form C-101
June 16, 2008

Submit to appropriate District Office

☐ AMENDED REPORT

APPLICATION FOR PERMIT TO DRILL, RE-ENTER, DEEPEN, PLUGBACK, OR ADD A ZONE

¹ Operator Name and Address B C Operating, Inc. P.O. Box 50820, Midland TX 79710		² OGRID Number 160825
³ Property Code 37360		⁴ API Number 30 -025-39243 39959
⁵ Property Name Tres Papalotes		⁶ Well No. 1
⁹ Proposed Pool 1 Wildcat Atok - Morrow		¹⁰ Proposed Pool 2 Wildcat Morrow

Surface Location									
UL or lot no.	Section	Township	Range	Lot Idn	Feet from the	North/South line	Feet from the	East/West line	County
F	32	14-S	34-E		1980	North	1980	West	Lea

8 Proposed Bottom Hole Location If Different From Surface									
UL or lot no.	Section	Township	Range	Lot Idn	Feet from the	North/South line	Feet from the	East/West line	County

¹¹ Work Type Code N	¹² Well Type Code G	¹³ Cable/Rotary R	¹⁴ Lease Type Code State	¹⁵ Ground Level Elevation 4140'
¹⁶ Multiple No	¹⁷ Proposed Depth 10,800'	¹⁸ Formation	¹⁹ Contractor TBA	²⁰ Spud Date 12-1-10

21 Proposed Casing and Cement Program

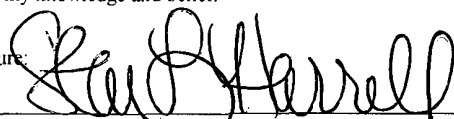
Hole Size	Casing Size	Casing weight/foot	Setting Depth	Sacks of Cement	Estimated TOC
17 1/2"	13 3/8"	48#	500'	430 sx	Surface
11"	8 5/8"	32#	4600'	800 sx	Surface
7 7/8"	5 1/2"	17#	10,800'	800 sx	Surface

²² Describe the proposed program. If this application is to DEEPEN or PLUG BACK, give the data on the present productive zone and proposed new productive zone. Describe the blowout prevention program, if any. Use additional sheets if necessary.

Mud Program: 0 to 430' 430' to 4600' 4600' to 10,800' Bope Program: A 5000# bope will be installed on
FW/Spud Mud Cut Brine Gel/Starch the 8 5/8" casing and test daily.
8.6 to 9.0 ppg 9.9 to 10.3 ppg 8.6 to 8.8 ppg

**Permit Expires 2 Years From Approval
Date Unless Drilling Underway**

²³ I hereby certify that the information given above is true and complete to the best of my knowledge and belief.

Signature: 

Printed name: Star L. Harrell

Title: Regulatory Analyst

E-mail Address: sharrell@blackoakres.com

Date: 11/4/10

Phone: (432) 684-9696 x 253

OIL CONSERVATION DIVISION

Approved by:

Title: **PETROLEUM ENGINEER**

Approval Date: **NOV 24 2010**

Expiration Date:

Oil Conservation Division

Conditions of approval : Approval for drilling/workover
ONLY-- CANNOT produce Downhole Commingled until
DHC is approved in Santa Fe.

District I
1625 N. French Dr., Hobbs, NM 88240
District II
1301 W. Grand Avenue, Artesia, NM 88210
District III
1000 Rio Brazos Rd., Aztec, NM 87410
District IV
1220 S. St. Francis Dr., Santa Fe, NM 87505

State of New Mexico
Energy, Minerals & Natural Resources Department
OIL CONSERVATION DIVISION
1220 South St. Francis Dr.
Santa Fe, NM 87505

RECEIVED

NOV 05 2010

HOBBSOCD

Form C-102
Revised July 16, 2010
Submit one copy to appropriate
District Office
☐ AMENDED REPORT

WELL LOCATION AND ACREAGE DEDICATION PLAT

¹ API Number 30-025-39243	² Pool Code 97799	³ Pool Name Wildcat Atoka Atoka
⁴ Property Code 37360	⁵ Property Name Tres Papalotes	⁶ Well Number 1
⁷ OGRID No. 160825	⁸ Operator Name BC Operating, Inc.	⁹ Elevation 4140'

¹⁰ Surface Location

UL or lot no. F	Section 32	Township 14 S	Range 34 E	Lot Idn	Feet from the 1980	North/South line North	Feet from the 1980	East/West line West	County Lea
--------------------	---------------	------------------	---------------	---------	-----------------------	---------------------------	-----------------------	------------------------	---------------

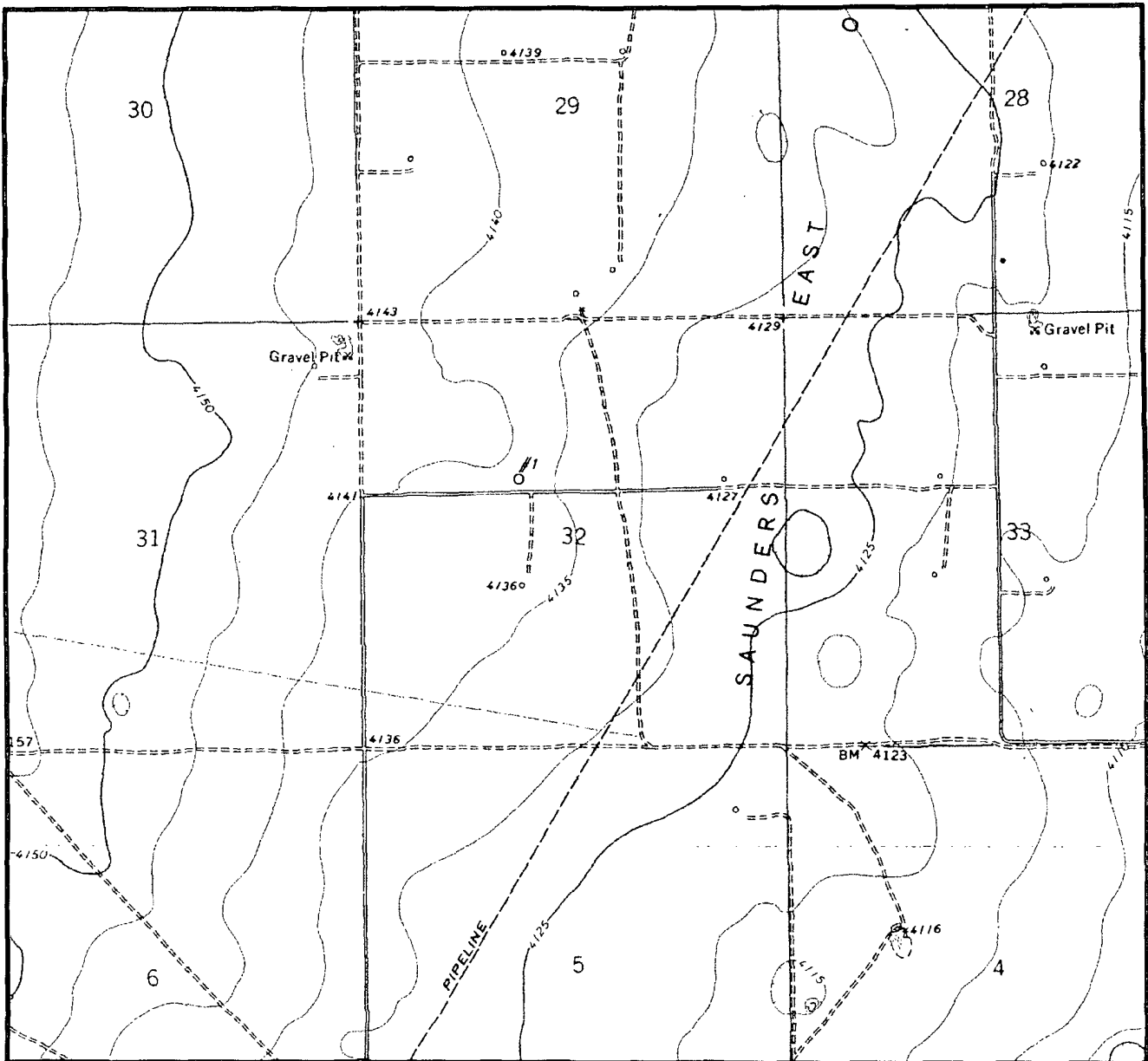
¹¹ Bottom Hole Location If Different From Surface

UL or lot no.	Section	Township	Range	Lot Idn	Feet from the	North/South line	Feet from the	East/West line	County
¹² Dedicated Acres 40	¹³ Joint or Infill	¹⁴ Consolidation Code	¹⁵ Order No.						

No allowable will be assigned to this completion until all interests have been consolidated or a non-standard unit has been approved by the division.

¹⁶	¹⁷ OPERATOR CERTIFICATION I hereby certify that the information contained herein is true and complete to the best of my knowledge and belief, and that this organization either owns a working interest or unleased mineral interest in the land including the proposed bottom hole location or has a right to drill this well at this location pursuant to a contract with an owner of such a mineral or working interest, or to a voluntary pooling agreement or a compulsory pooling order heretofore entered by the division. Signature _____ Date 11-4-10 Star L. Harrell Printed Name sharrell@blackoakres.com E-mail Address
	¹⁸ SURVEYOR CERTIFICATION I hereby certify that the well location shown on this plat was plotted from field notes of actual surveys made by me or under my supervision, and that the same is true and correct to the best of my belief. Date of Survey _____ Signature and Seal of Professional Surveyor: _____ Certificate Number _____

LOCATION & ELEVATION VERIFICATION MAP



SCALE : 1" = 2000'

CONTOUR INTERVAL 5'

SECTION 32 TWP 14-S RGE 34-E

SURVEY NEW MEXICO PRINCIPAL MERIDIAN

COUNTY LEA STATE NM

DESCRIPTION 1980' FNL & 1980' FWL

ELEVATION 4140'

OPERATOR BC OPERATING, INC.

LEASE #1 TRES PAPALOTES

U.S.G.S. TOPOGRAPHIC MAP

FORT RANCH QUADRANGLE, NEW MEXICO LEA CO.

SCALED LAT. LAT.: N 33.0627660

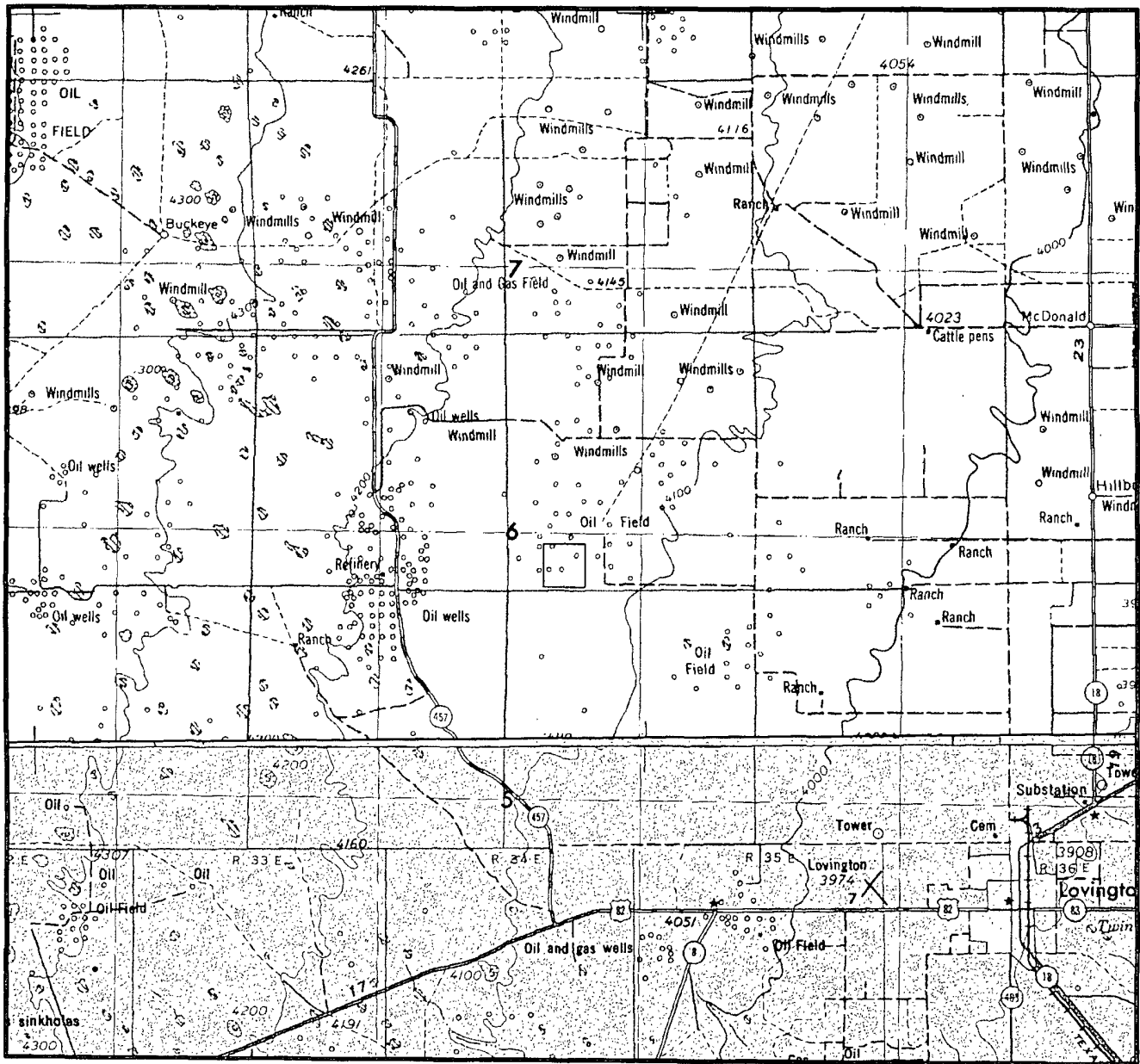
LONG. LONG.: W 103.5348518

TOPOGRAPHIC LAND SURVEYORS

Surveying & Mapping for the Oil & Gas Industry

2903 N. BIG SPRING
MIDLAND, TX. 79705
(800) 767-1653

VICINITY MAP



SECTION 32 TWP 14-S RGE 34-E

SURVEY NEW MEXICO PRINCIPAL MERIDIAN

COUNTY LEA STATE NM

DESCRIPTION 1980' FNL & 1980' FWL

OPERATOR BC OPERATING, INC

LEASE #1 TRES PAPALOTES

DISTANCE & DIRECTION FROM JCT. OF HIGHWAY 82 &

HIGHWAY 457 GO NORTHWEST \pm 9.0 MILES ON HIGHWAY

457 THENCE WEST \pm 3.5 ON LEASE ROAD THENCE NORTH

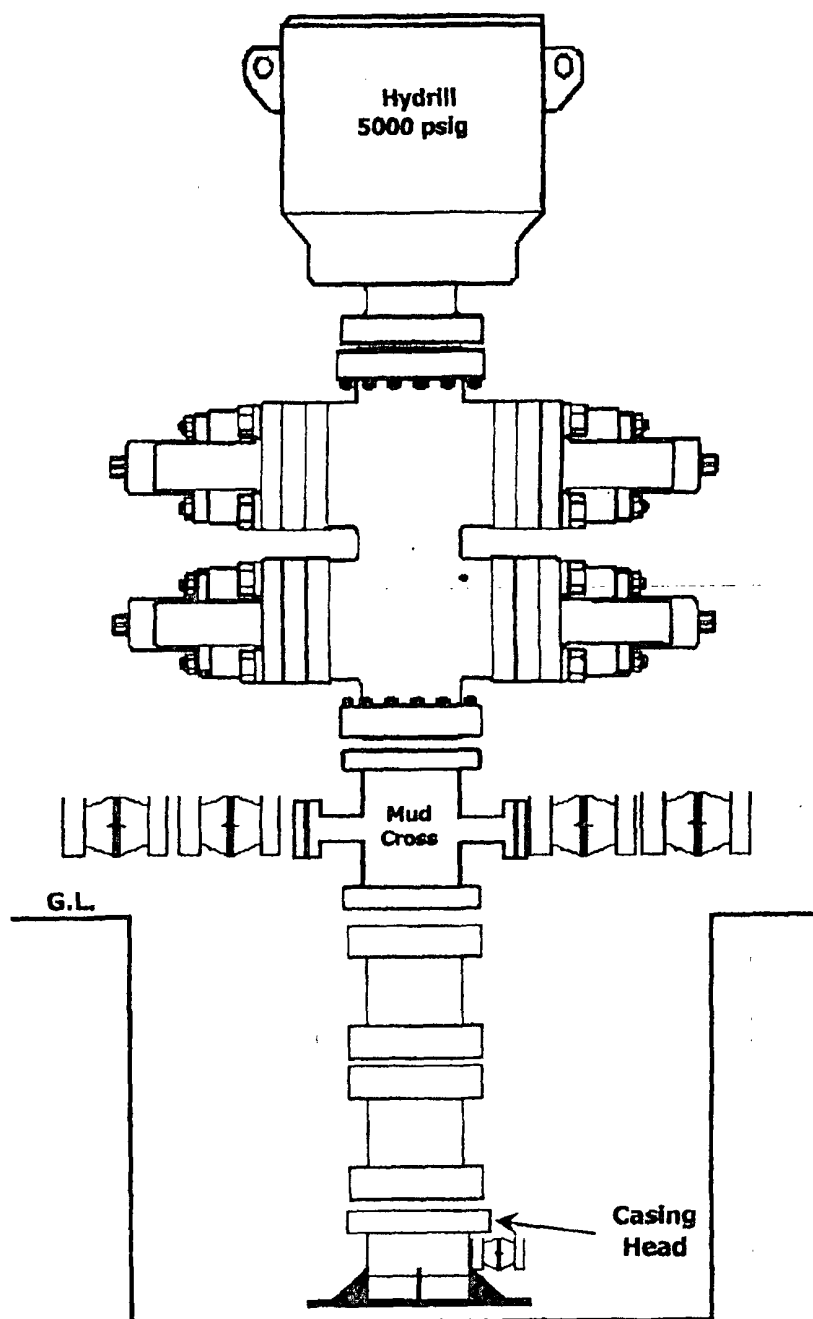
\pm 0.06 MILES THENCE EAST \pm 0.4 MILES TO A POINT

\pm 200' SOUTH OF LOCATION

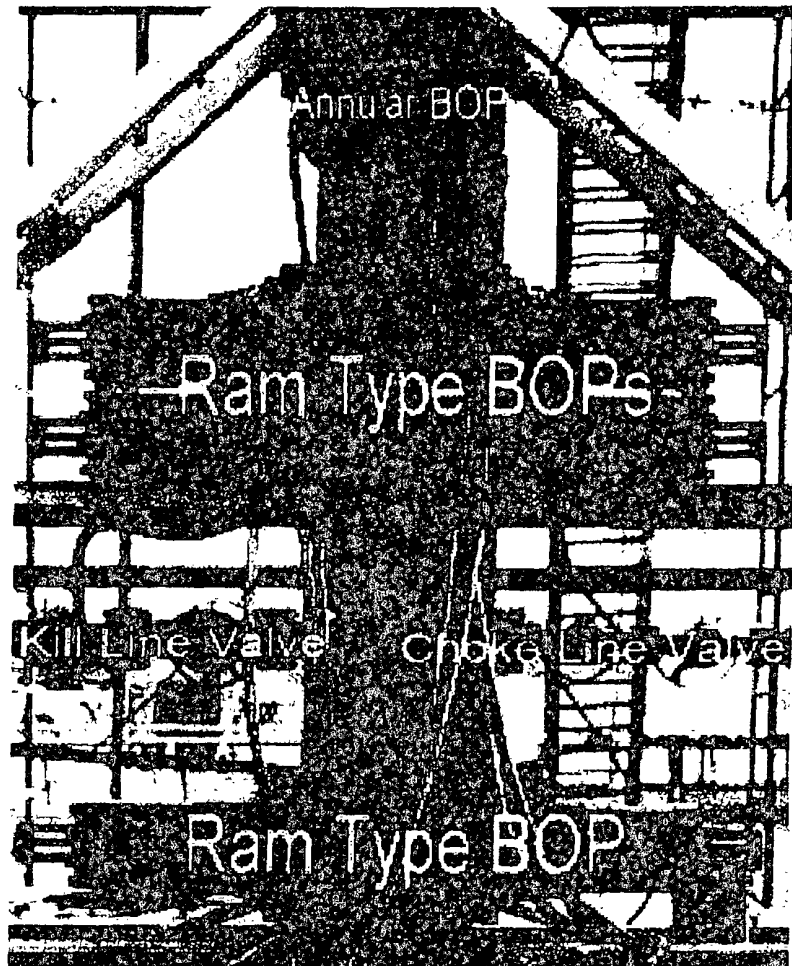
TOPOGRAPHIC LAND SURVEYORS

Surveying & Mapping for the Oil & Gas Industry

2903 N. BIG SPRING
MIDLAND, TX. 79705
(800) 767-1653



Example of Blowout Preventer
Tested to 5,000#



3 M Choke Manifold

