

District I
1625 N. French Dr., Hobbs, NM 88240

District II
1301 W. Grand Avenue, Artesia, NM 88210

District III
1000 Rio Brazos Road, Aztec, NM 87410

District IV
1220 S. St. Francis Dr., Santa Fe, NM 87505

State of New Mexico
Energy Minerals and Natural Resources

Form C-101
June 16, 2008

Oil Conservation Division
1220 South St. Francis Dr.
Santa Fe, NM 87505

Submit to appropriate District Office

☐ AMENDED REPORT

APPLICATION FOR PERMIT TO DRILL, RE-ENTER, DEEPEN, PLUGBACK, OR ADD A ZONE

¹ Operator Name and Address Yates Petroleum Corporation 105 South Fourth Street Artesia, NM 88210		² OGRID Number 025575 ✓
³ Property Code 34808 ✓	³ Property Name Indigo BHC State Com ✓	³ API Number 30 - 025 - 37086 ✓
⁹ Proposed Pool 1 Wildcat; Abo ✓		¹⁰ Proposed Pool 2

Surface Location

UL or lot no. D	Section 5	Township 12S	Range 35E	Lot Idn	Feet from the 660	North/South line North	Feet from the 660	East/West line West	County Lea ✓
--------------------	--------------	-----------------	--------------	---------	----------------------	---------------------------	----------------------	------------------------	-----------------

⁸ Proposed Bottom Hole Location If Different From Surface

UL or lot no.	Section	Township	Range	Lot Idn	Feet from the	North/South line	Feet from the	East/West line	County
---------------	---------	----------	-------	---------	---------------	------------------	---------------	----------------	--------

Additional Well Information

¹¹ Work Type Code P ✓	¹² Well Type Code O	¹³ Cable/Rotary N/A	¹⁴ Lease Type Code S ✓	¹⁵ Ground Level Elevation 4162' GL
¹⁶ Multiple N	¹⁷ Proposed Depth N/A	¹⁸ Formation Mississippian	¹⁹ Contractor N/A	²⁰ Spud Date N/A

²¹ Proposed Casing and Cement Program

Hole Size	Casing Size	Casing weight/foot	Setting Depth	Sacks of Cement	Estimated TOC
IN PLACE					

²² Describe the proposed program. If this application is to DEEPEN or PLUG BACK, give the data on the present productive zone and proposed new productive zone. Describe the blowout prevention program, if any. Use additional sheets if necessary.

Yates Petroleum Corporation plans to plugback and recompleat this well as follows: MIRU WSU. NU BOP. Release packer and TOH. Drill out and push remnants of composite plug originally set at 12,010' (and most recently found at 11,995') to at least 12,350'. Set a CIBP at 12,300' and dump 35' cement on top. Set a 2nd CIBP at 12,200' and dump 35' cement on top. Set a 3rd CIBP at 11,880' and dump 35' cement on top. Perforate Abo 9168'-9176' (16). Stimulate as needed.

**Permit Expires 2 Years From Approval
Date Unless Drilling Underway
Plugback**

²³ I hereby certify that the information given above is true and complete to the best of my knowledge and belief.

Signature:

Tina Huerta

Printed name: Tina Huerta

Title: Regulatory Compliance Supervisor

E-mail Address: tinah@yatespetroleum.com

Date: November 23, 2010

Phone: 575-748-4168

OIL CONSERVATION DIVISION

Approved by:

[Signature]

Title:

PETROLEUM ENGINEER

Approval Date: **NOV 30 2010**

Expiration Date:

Conditions of Approval Attached ☐

District I
1625 N. French Dr., Hobbs, NM 88240
District II
1301 W. Grand Avenue, Artesia, NM 88210
District III
1000 Rio Brazos Rd., Aztec, NM 87410
District IV
1220 S. St. Francis Dr., Santa Fe, NM 87505

State of New Mexico
Energy, Minerals & Natural Resources Department
OIL CONSERVATION DIVISION
1220 South St. Francis Dr.
Santa Fe, NM 87505

RECEIVED
NOV 29 2010
HOBBSDO

Form C-102
Revised July 16, 2010
Submit one copy to appropriate
District Office
☐ AMENDED REPORT

WELL LOCATION AND ACREAGE DEDICATION PLAT

¹ API Number 30-025-37086	² Pool Code 97019	³ Pool Name Wildcat; Abo
⁴ Property Code 34808	⁵ Property Name Indigo BHC State Com	⁶ Well Number 4
⁷ OGRID No. 025575	⁸ Operator Name Yates Petroleum Corporation	⁹ Elevation 4162'GL

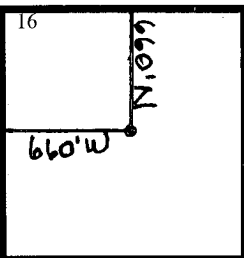
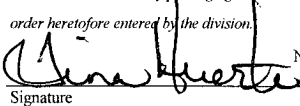
¹⁰ Surface Location

UL or lot no. D	Section 5	Township 12S	Range 35E	Lot Idn	Feet from the 660	North/South line North	Feet from the 660	East/West line West	County Lea
--------------------	--------------	-----------------	--------------	---------	----------------------	---------------------------	----------------------	------------------------	---------------

¹¹ Bottom Hole Location If Different From Surface

UL or lot no.	Section	Township	Range	Lot Idn	Feet from the	North/South line	Feet from the	East/West line	County
¹² Dedicated Acres 40	¹³ Joint or Infill	¹⁴ Consolidation Code	¹⁵ Order No.						

No allowable will be assigned to this completion until all interests have been consolidated or a non-standard unit has been approved by the division.

¹⁶ 				¹⁷ OPERATOR CERTIFICATION <i>I hereby certify that the information contained herein is true and complete to the best of my knowledge and belief, and that this organization either owns a working interest or unleased mineral interest in the land including the proposed bottom hole location or has a right to drill this well at this location pursuant to a contract with an owner of such a mineral or working interest, or to a voluntary pooling agreement or a compulsory pooling order heretofore entered by the division.</i>  Signature November 23, 2010 Date Tina Huerta Printed Name tinah@yatespetroleum.com E-mail Address
				¹⁸ SURVEYOR CERTIFICATION <i>I hereby certify that the well location shown on this plat was plotted from field notes of actual surveys made by me or under my supervision, and that the same is true and correct to the best of my belief.</i>
				Date of Survey Signature and Seal of Professional Surveyor: Certificate Number

Well Name: Indigo BHC State Com No. 4 Field: _____

Location: 660' FNL & 660' FWL Sec. 5-12S-35E Lea Co, NM

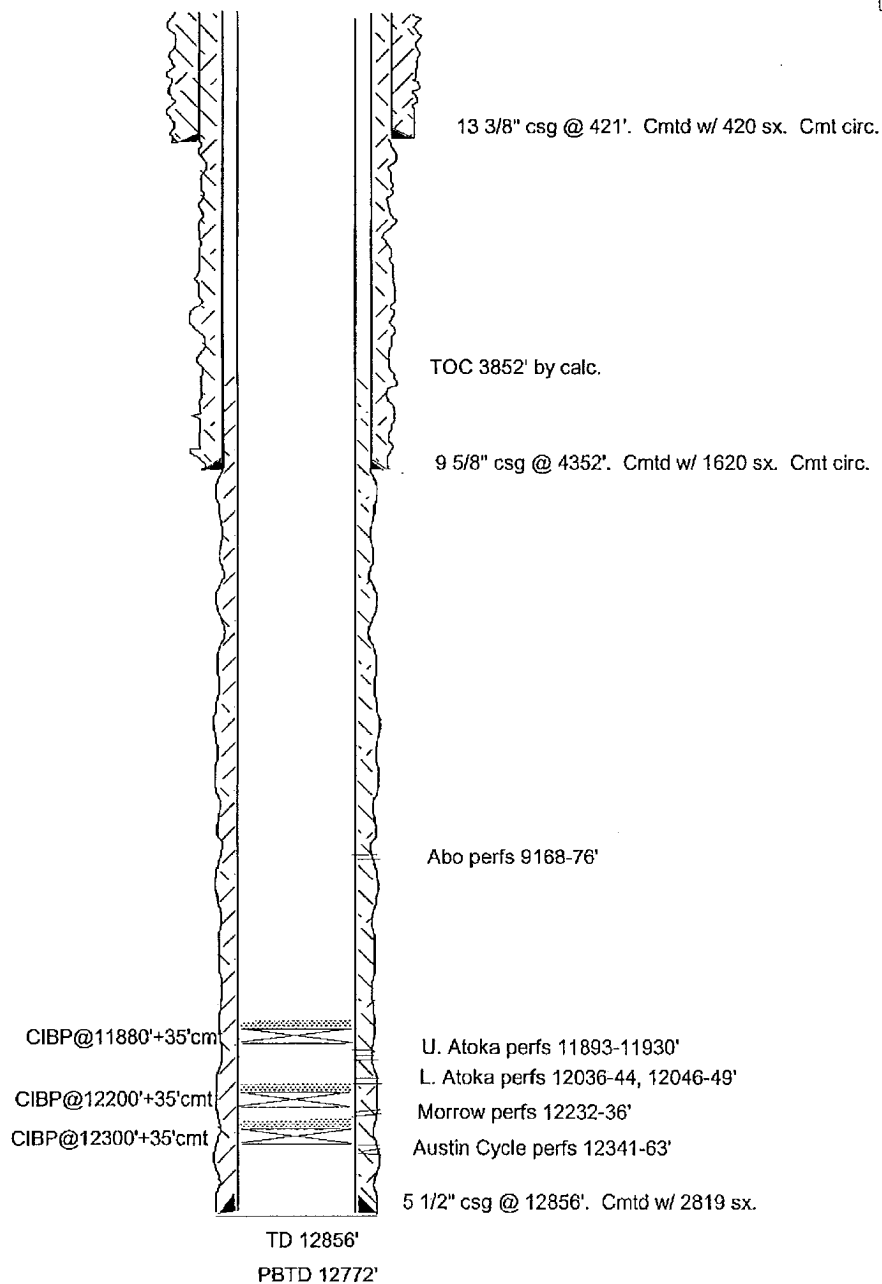
GL: 4162' Zero: _____ AGL: _____ KB: 4182.5'

Spud Date: 7/14/04 Completion Date: _____

Comments: _____

Casing Program	
Size/Wt/Grade/Conn	Depth Set
13 3/8" 48# H40	421'
9 5/8" 36 & 40# J55	4352'
5 1/2" 17# J55, L80, HCP110	12856'

PROPOSED CONFIGURATION

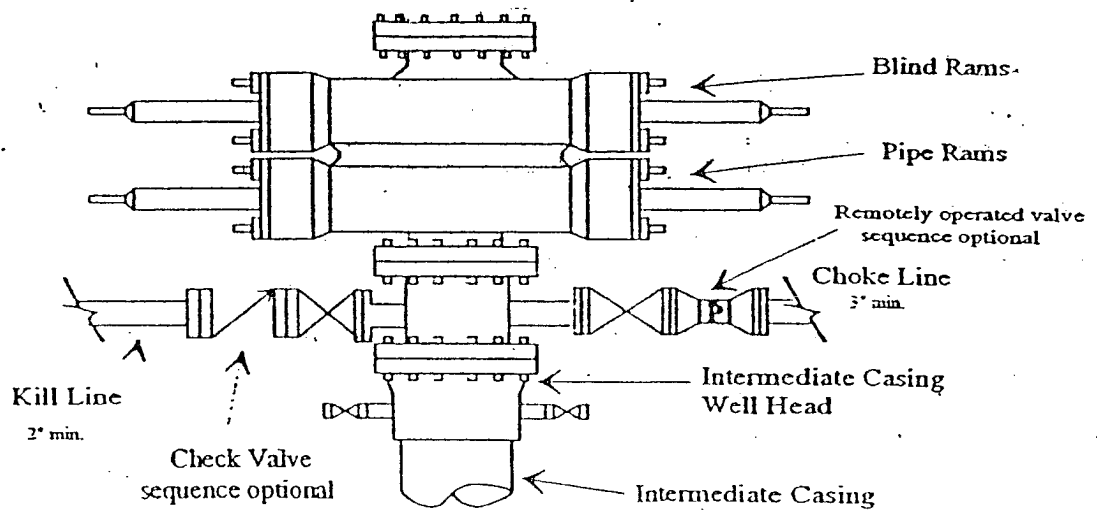


SKETCH NOT TO SCALE

DATE: 10/1/10 INDIGO4E

Yates Petroleum Corporation

Typical 3,000 psi Pressure System Schematic



Typical 3,000 psi choke manifold assembly with at least these minimum features

