

DISTRICT I
1625 N. French Dr., Hobbs, NM 88240

DISTRICT II
1301 W. Grand Avenue, Artesia, NM 88210

DISTRICT III
1000 Rio Brazos Rd., Aztec, NM 87410

DISTRICT IV
1220 S. St. Francis Dr., Santa Fe, NM 87505

RECEIVED

NOV 30 2010

HOBBSD

State of New Mexico
Energy, Minerals and Natural Resources Department

OIL CONSERVATION DIVISION

1220 South St. Francis Dr.
Santa Fe, New Mexico 87505

Form C-102

Revised July 16, 2010

Submit one copy to appropriate
District Office

WELL LOCATION AND ACREAGE DEDICATION PLAT

☐ AMENDED REPORT

API Number 30-025-39965	Pool Code 22900	Pool Name Eunice; Bli-Tu-Dr, North
Property Code 37346	Property Name WEST BLINEBRY DRINKARD UNIT	Well Number 131
OGRID No. 873	Operator Name APACHE CORPORATION	Elevation 3476'

Surface Location

UL or lot No. LOT 15	Section 4	Township 21 S	Range 37 E	Lot Idn	Feet from the 3630	North/South line SOUTH	Feet from the 2310	East/West line EAST	County LEA
--------------------------------	---------------------	-------------------------	----------------------	---------	------------------------------	----------------------------------	------------------------------	-------------------------------	----------------------

Bottom Hole Location If Different From Surface

UL or lot No.	Section	Township	Range	Lot Idn	Feet from the	North/South line	Feet from the	East/West line	County
Dedicated Acres 40	Joint or Infill	Consolidation Code	Order No.						

NO ALLOWABLE WILL BE ASSIGNED TO THIS COMPLETION UNTIL ALL INTERESTS HAVE BEEN CONSOLIDATED
OR A NON-STANDARD UNIT HAS BEEN APPROVED BY THE DIVISION

LOT 12	LOT 11	LOT 10	LOT 9
LOT 13	SURFACE LOCATION Lot - N 32°30'38.49" Long - W 103°10'01.11" NMSPCE- N 551487.214 E 900886.458 (NAD-83) SURFACE LOCATION Lot - N 32°30'38.05" Long - W 103°09'59.42" NMSPCE- N 551426.975 E 859702.636 (NAD-27) Nad 27 - 32.510569 103.166506	LOT 15	LOT 16
1/4 COR.			1/4 COR.

OPERATOR CERTIFICATION

I hereby certify that the information contained herein is true and complete to the best of my knowledge and belief, and that this organization either owns a working interest or unleased mineral interest in the land including the proposed bottom hole location or has a right to drill this well at this location pursuant to a contract with an owner of such a mineral or working interest, or to a voluntary pooling agreement or a compulsory pooling order heretofore entered by the division.

Sorina L. Flores 11/29/10
Signature Date

Sorina L. Flores
Printed Name

Sorina.L.Flores@apachecorp.com
Email Address

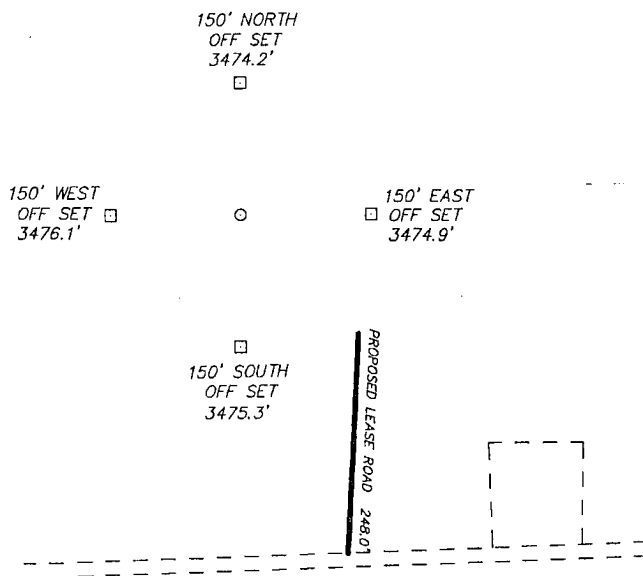
SURVEYOR CERTIFICATION

I hereby certify that the well location shown on this plat was plotted from field notes of actual surveys made by me or under my supervision, and that the same is true and correct to the best of my belief.

GARY L. JONES
Date Surveyed
Signature & Seal of Professional Surveyor
W. 103.166506 2757

Certificate No. Gary L. Jones 7977
BASIN SURVEYS 23757

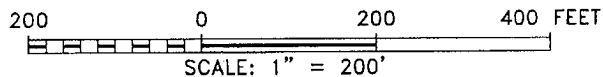
SECTION 4, TOWNSHIP 21 SOUTH, RANGE 37 EAST, N.M.P.M.,
LEA COUNTY, NEW MEXICO.



APACHE CORPORATION
WEST BLINEBRY DRINKARD UNIT #131
ELEV. - 3476'

Lat - N 32°30'38.49"
Long - W 103°10'01.11"
NMSPCE- N 551487.214
E 900886.458
(NAD-83)

Lat - N 32°30'38.05"
Long - W 103°09'59.42"
NMSPCE- N 551426.975
E 859702.636
(NAD-27)



Directions to Location:

FROM THE JUNCTION OF STATE HWY 207 AND CO.
RD. DECK, TO WEST 0.3 MILES; THENCE NORTH 0.5
MILES TO A CURVE GOING NORTH 0.7 MILES
TURNING EAST 0.1 MILES TO PROPOSED LEASE ROAD.

2H

APACHE CORPORATION

REF: WEST BLINEBRY DRINKARD UNIT #131 / WELL PAD TOPO

THE WEST BLINEBRY DRINKARD UNIT #131 LOCATED 3630'
FROM THE SOUTH LINE AND 2310' FROM THE EAST LINE OF
SECTION 4, TOWNSHIP 21 SOUTH, RANGE 37 EAST,
N.M.P.M., LEA COUNTY, NEW MEXICO.

BASIN SURVEYS P.O. BOX 1786 - HOBBS, NEW MEXICO

W.O. Number: 23757

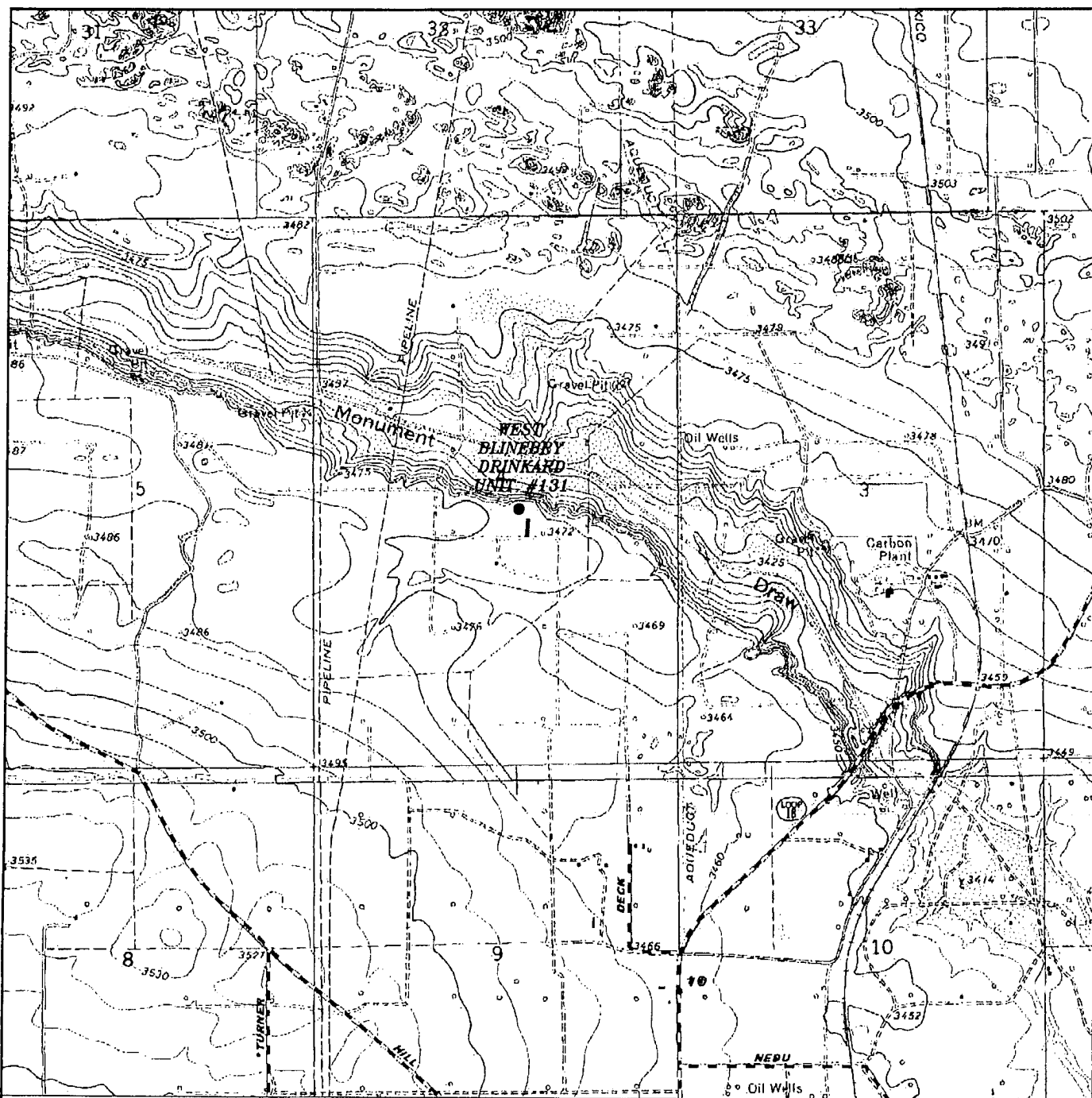
Drawn By: J. SMALL

Date: 11-24-2010

Disk: JMS 23757

Survey Date: 11-19-2010

Sheet 1 of 1 Sheets



WEST BLINEBRY DRINKARD UNIT #131

Located 3630' FSL and 2310' FEL

Section 4, Township 21 South, Range 37 East,
N.M.P.M., Lea County, New Mexico.

RH

basin
surveys

focused on excellence
in the oilfield

P.O. Box 1786
1120 N. West County Rd.
Hobbs, New Mexico 88241
(575) 393-7316 - Office
(575) 392-2206 - Fax
basinsurveys.com

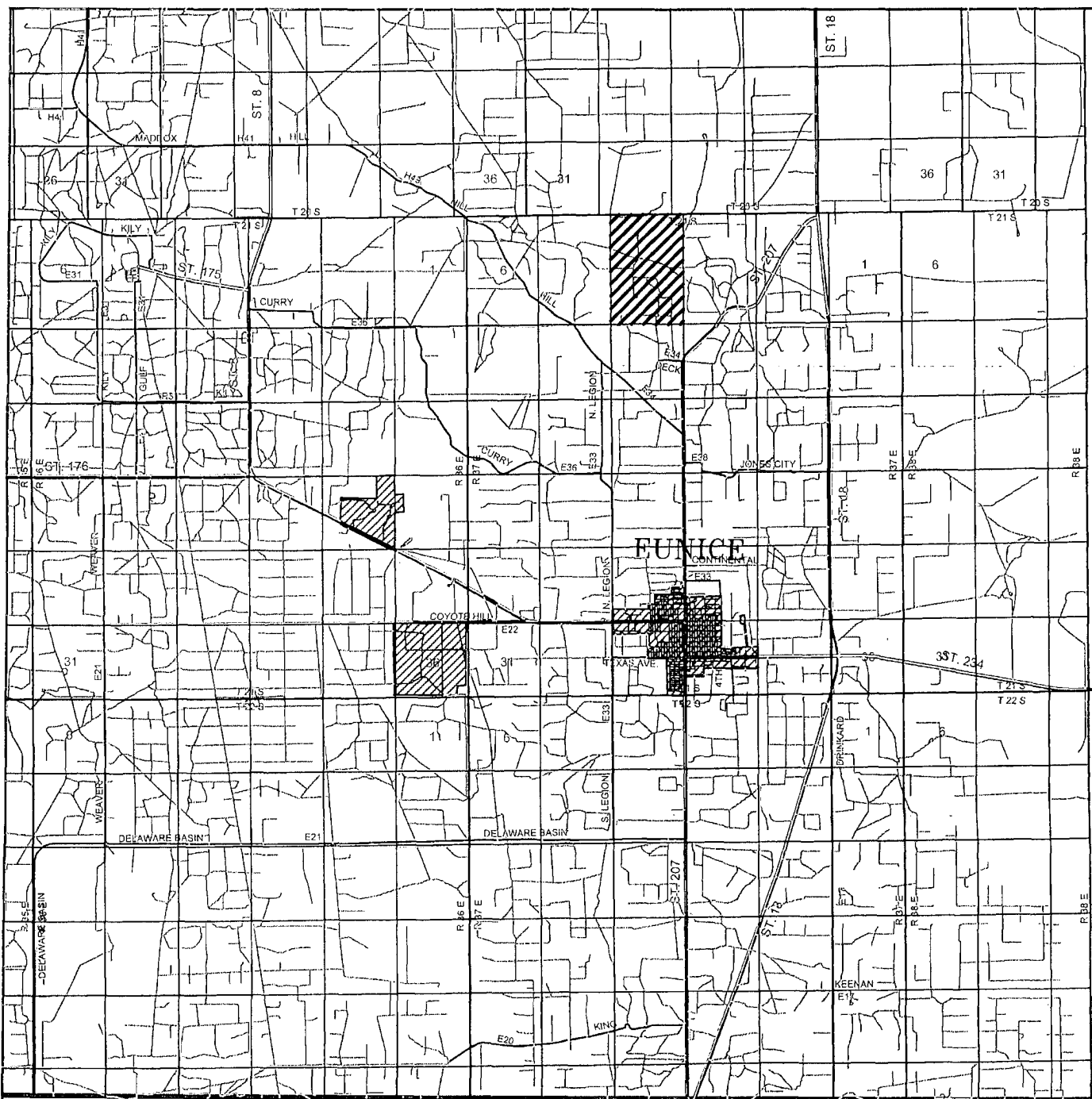
W.O. Number: JMS 23757

Survey Date: 11-19-2010

Scale: 1" = 2000'

Date: 11-24-2010

APACHE
CORPORATION

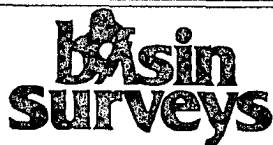


WEST BLINEBRY DRINKARD UNIT #131

Located 3630' FSL and 2310' FEL

Section 4, Township 21 South, Range 37 East,
N.M.P.M., Lea County, New Mexico.

24



focused on excellence
in the oilfield

P.O. Box 1786
1120 N. West County Rd.
Hobbs, New Mexico 88241
(575) 393-7316 - Office
(575) 392-2206 - Fax
basinsurveys.com

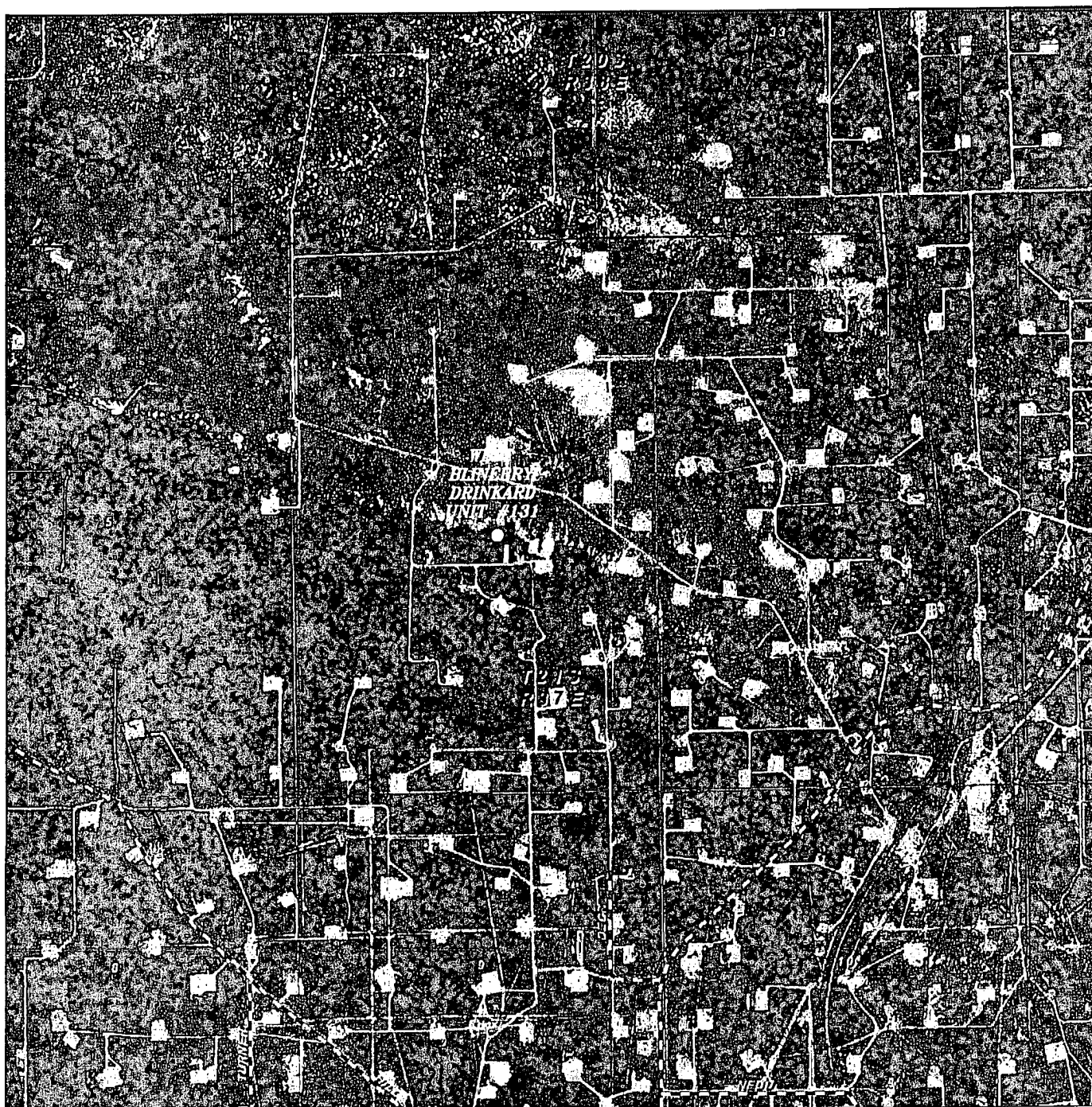
W.O. Number: JMS 23757

Survey Date: 11-19-2010

Scale: 1" = 2 Miles

Date: 11-24-2010

APACHE
CORPORATION



WEST BLINEBRY DRINKARD UNIT #131

Located 3630' FSL and 2310' FEL

Section 4, Township 21 South, Range 37 East,
N.M.P.M., Lea County, New Mexico.

RH

basin
surveys
focused on excellence
in the oilfield

P.O. Box 1786
1120 N. West County Rd.
Hobbs, New Mexico 88241
(575) 393-7316 - Office
(575) 392-2206 - Fax
basinsurveys.com

W.O. Number: JMS 23757

Scale: 1" = 2000'

YELLOW TINT - USA LAND
BLUE TINT - STATE LAND
NATURAL COLOR - FEE LAND

APACHE
CORPORATION