

Chevron



TA WELL DATA SHEET

RECEIVED

DEC 06 2010

HOBBSD

LEASE: EMSU WELL: 445

 LOC: 1980' F N L & 660' F W L SEC: 22
 TOWNSHIP: 21S CNTY: Lea
 RANGE: 36E UNIT: E ST: N.M.

(formerly: Arco State "J" #11)

FORM: Grayburg / San Andres

DATE:

GL: 3618'

STATUS: SI Producer

KB:

API NO: 30-025-04752

DF:

CHEVNO: FA 5892:01

Date Completed: 6/9/1936

Initial Production: 167 BOPD

Initial Formation: Grayburg

FROM: 3816' to 3872' / GOR 0

Completion Data

6/36 Drill to 3900', PB to 3872' w/ junk in hole. Complete naturally.

Subsequent Workover or Reconditioning:

9/39 Selectively perf 3787-3800' ACDZ w/ 500 gals.
 7/6/42 PB fr 3900' to 3820' to shut off water. ACDZ w/ 500 gals.
 6/44 Drilled cmt & struck iron @ 3870', angling off into formation. Stopped drilling. PB to 3812'. SQZD 3787-3800' w/ 50 SX cmt. TO cmt to 3890' & ACDZ w/ 1000 gals.
 2/46 PB to 3872' w/ 35 gals plastic.
 5/55 Pushed Guiberson stripper rubber to bottom of well.
 4/56 Recovered old stripper rubber.
 3/29/61 ACDZ w/ 500 gals.
 8/70 ACDZ w/ 1000 gals 15%.
 9/23/73 ACDZ w/ 1000 gals 15% HCl.
 2/84 Clean out to 3867' & tagged junk. Unable to CO deeper.
 6/16/87 Deepen to 3995'. Mill on junk 3870-3889' & drill from 3889-3995'. Log AWS CNL-CCL-GR (logger TD 3984'). RIH w/ prod tbg (landed @ 3821.17'). Test pump - 3 BOPD/ 108 bwpd/ 65 MCFGPD.
 7/3/90 Treat w/ 165 gals.
 12/1/90 Treat w/ 165 gals.
 4/23/01 POH w/100 jts 2-3/8" tbg. RIH w/7" CIBP, set @ 3718'. Circ hole w/pkr fld, run MIT @ 560# f/30 min w/no bleed off. Well TA'd.

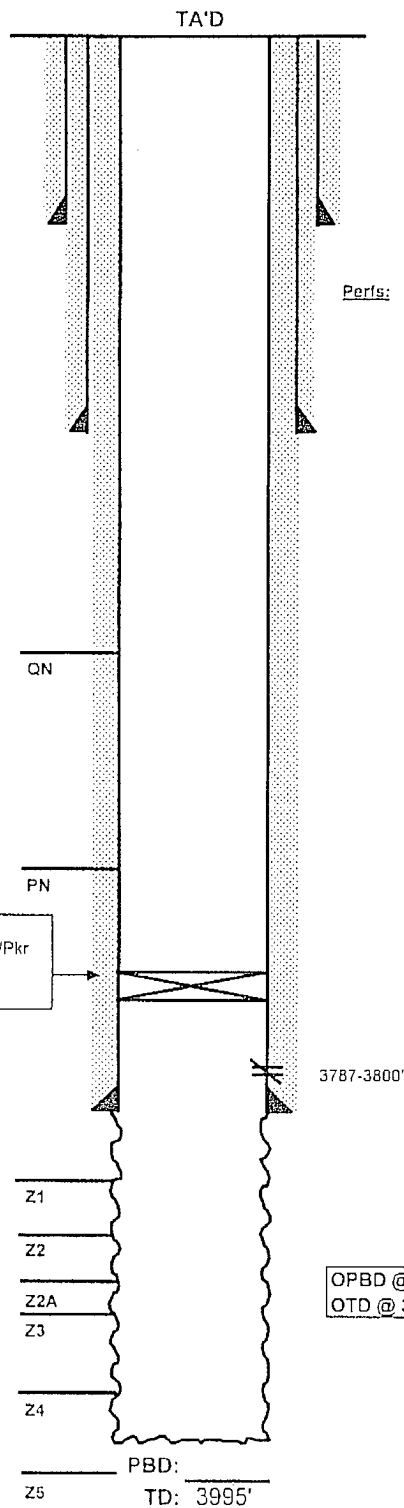
Additional Data:

T/Queen Formation @ 3524'
 T/Penrose Formation @ 3662'
 T/Grayburg Zone 1 @ 3846'
 T/Grayburg Zone 2 @ 3883'
 T/Grayburg Zone 2A @ 3918'
 T/Grayburg Zone 3 @ 3942'
 T/Grayburg Zone 4 @ 3978'
 T/Grayburg Zone 5 @ 4030'
 T/Grayburg Zone 6 @ 4063'
 T/San Andres Formation @ 4072'
 KB @ 3618'

 13" OD
 CSG
 Set @ 274' W/ 200 SX
 Cmt circ.? No
 TOC @ 24' by calc.

 9-5/8" OD
 36# CSG 8rd
 Set @ 1510' W/ 400 SX
 Cmt circ.? No
 TOC @ 10' by calc.

 7" OD
 24# CSG 10rd
 Set @ 3816' W/ 400 SX
 Cmt circ.? No
 TOC @ 1006' by calc.

 OCD TA-PROPOSAL
 Set CIBP @ 3718', Circ w/Pkr
 Fld.


FILE: EMSU445WB.XLS