

DISTRICT I
1625 N. French Dr., Hobbs, NM 88240
DISTRICT II
1301 W. Grand Ave., Artesia, NM 88210
DISTRICT III
1000 Rio Brazos Rd., Aztec, NM 87410
DISTRICT IV
1220 St. Francis Dr., Santa Fe, NM 87505

RECEIVED

DEC 06 2010

HOBBSOCD

State of New Mexico
Energy, Minerals and Natural Resources Department

OIL CONSERVATION DIVISION

1220 South St. Francis Drive
Santa Fe, NM 87505

Form C-102
Revised October 12, 2005

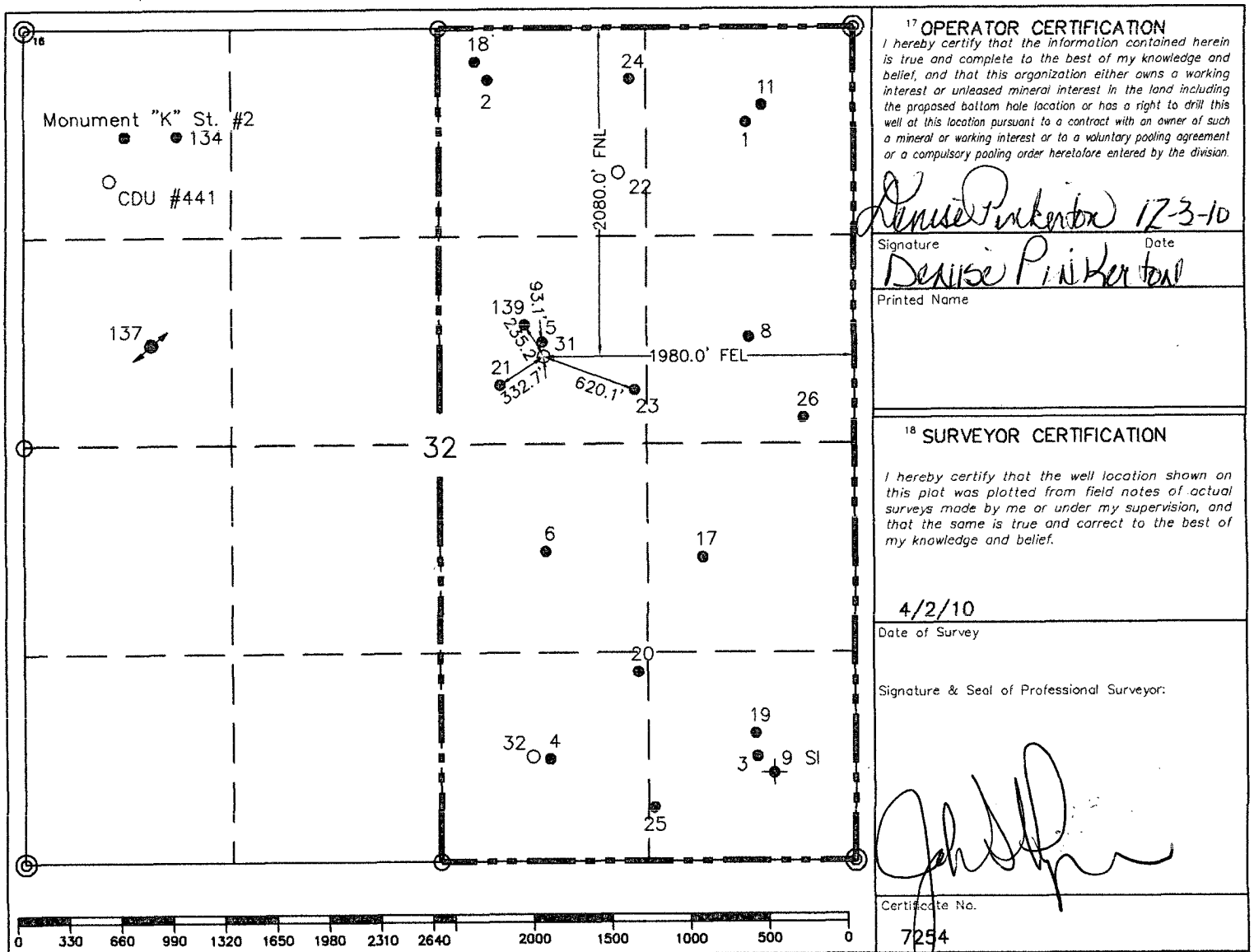
Submit to Appropriate District Office
State Lease-4 copies
Fee Lease-3 copies

☐ AMENDED REPORT

WELL LOCATION AND ACREAGE DEDICATION PLAT

¹ API Number 30-025-38972		² Pool Code 60240		³ Pool Name Jubb Oil & Gas					
⁴ Property Code 2690		⁵ Property Name W.T. McCOMACK							
⁶ Well Number 31		⁷ Operator Name CHEVRON USA							
⁸ OGRID No. 4323		⁹ Elevation 3459'							
¹⁰ Surface Location									
UL or lot no. G	Section 32	Township 21-S	Range 37-E	Lot Idn	Feet from the 2080'	North/South line North	Feet from the 1980'	East/West line East	County Lea
¹¹ Bottom Hole Location If Different From Surface									
UL or lot no.	Section	Township	Range	Lot Idn	Feet from the	North/South line	Feet from the	East/West line	County
¹² Dedicated Acres 40		¹³ Joint or Infill		¹⁴ Consolidation Code		¹⁵ Order No.			

NO ALLOWABLE WILL BE ASSIGNED TO THIS COMPLETION UNTIL ALL INTERESTS HAVE BEEN CONSOLIDATED
OR A NON-STANDARD UNIT HAS BEEN APPROVED BY THE DIVISION.



○ = Staked Location • = Producing Well ⊕ = Injection Well ⊙ = Water Supply Well ⊛ = Plugged & Abandon Well
⊙ = Found Section Corner, 2 or 3" Iron Pipe & GLO B.C. ○ = Found /4 Section Corner, 1" Iron Pipe & GLO B.C.

ADDITIONAL INFORMATION ON THE LOCATION

State Plane Coordinates			
Northing 524594.44 (1927 NAD= 524535.02)		Easting 896246.33 (1927 NAD= 855061.82)	
Latitude 32°26'12.919"		Longitude 103°10'58.679"	
Zone	North American Datum	Combined Grid Factor	Coordinate File
East	1983/HARN	0.999891401	Weatherly83E.crd
Drawing File		Field Book	
Chevron-Weatherly.Dwg		Lea #24, Pg. 44	