

District I  
1625 N. French Dr., Hobbs, NM 88240  
District II  
1301 W. Grand Avenue, Artesia, NM 88210  
District III  
1000 Rio Brazos Road, Aztec, NM 87410  
District IV  
1220 S. St. Francis Dr., Santa Fe, NM 87505

State of New Mexico  
Energy Minerals and Natural Resources

Oil Conservation Division  
1220 South St. Francis Dr.  
Santa Fe, NM 87505

RECEIVED  
DEC 06 2010  
HOBBSD

Form C-101  
June 16, 2008

Submit to appropriate District Office

☐ AMENDED REPORT

**APPLICATION FOR PERMIT TO DRILL, RE-ENTER, DEEPEN, PLUGBACK, OR ADD A ZONE**

<sup>1</sup> Operator Name and Address Pride Energy Company		<sup>2</sup> OGRID Number 151323
		<sup>3</sup> API Number 30 - 025-23655
<sup>4</sup> Property Code 303421	<sup>5</sup> Property Name New Mexico 87 State	<sup>6</sup> Well No. 1
<sup>9</sup> Proposed Pool 1 Wildcat Wolfcamp (pool code 97806)		<sup>10</sup> Proposed Pool 2

**7 Surface Location**

UL or lot no. K	Section 33	Township 14S	Range 34E	Lot Idn K	Feet from the 2086	North/South line South	Feet from the 1874	East/West line West	County Lea
--------------------	---------------	-----------------	--------------	--------------	-----------------------	---------------------------	-----------------------	------------------------	---------------

**8 Proposed Bottom Hole Location If Different From Surface**

UL or lot no.	Section	Township	Range	Lot Idn	Feet from the	North/South line	Feet from the	East/West line	County
---------------	---------	----------	-------	---------	---------------	------------------	---------------	----------------	--------

**Additional Well Information**

<sup>11</sup> Work Type Code P	<sup>12</sup> Well Type Code 0	<sup>13</sup> Cable/Rotary	<sup>14</sup> Lease Type Code S	<sup>15</sup> Ground Level Elevation 4,118
<sup>16</sup> Multiple N	<sup>17</sup> Proposed Depth 10,550	<sup>18</sup> Formation Wildcat Wolfcamp	<sup>19</sup> Contractor	<sup>20</sup> Spud Date 10/27/10

**21 Proposed Casing and Cement Program**

Hole Size	Casing Size	Casing weight/foot	Setting Depth	Sacks of Cement	Estimated TOC
17.5	13 3/8	48	445	450 SX	
11	8 5/8	24 & 32	4,538	500sx	
7 7/8	5 1/2	17 & 15.5	10,549	460sx	

<sup>22</sup> Describe the proposed program. If this application is to DEEPEN or PLUG BACK, give the data on the present productive zone and proposed new productive zone. Describe the blowout prevention program, if any. Use additional sheets if necessary.

- MIRU, ND wellhead, NU BOP, TIH w/ bit & scraper to PBTD 10,350'.
- Circulate & load hole w/ 2% KCL water, TOH w/ bit & scraper.
- RU wireline, run CBL from 10,350' up to 8,000'.
- Perforate Wolfcamp at 9,650-654=4'; 9,699-701=2'; 9,742-744=2'; total of 8', 3 spf, 24 holes, 0.42" hole size
- PU & TIH w/ 3 1/2" tubing frac string, set packer @ 9,550' pressure up on annulus to 500 # psi; install frac valve.
- Frac down 3 1/2" frac string, rig up manifold & flow back frac.
- Release packer, TOH w/ 3 1/2" frac string.
- TIH w/ 2 7/8" tubing w/ mud anchor, SN & TAC.
- RIH w/ downhole pump & rods.
- Set pumping unit & begin pumping.

**Permit Expires 2 Years From Approval  
Date Unless Drilling Underway**

<sup>23</sup> I hereby certify that the information given above is true and complete to the best of my knowledge and belief. <i>Matthew L. Pride</i>	OIL CONSERVATION DIVISION <i>Plugback</i>	
Printed name: Matthew L. Pride	Approved by: <i>[Signature]</i>	
Title: Pres. of Pride Production Co., Inc. General Partner of Pride Energy Co.	Title: <b>PETROLEUM ENGINEER</b>	
E-mail Address: Mattp@pride-energy.com	Approval Date: <b>DEC 16 2010</b>	Expiration Date:
Date: 11/24/10	Phone: (918) 524-9200	Conditions of Approval Attached <input type="checkbox"/>

**District I**  
1625 N. French Dr., Hobbs, NM 88240  
**District II**  
1301 W. Grand Avenue, Artesia, NM 88210  
**District III**  
1000 Rio Brazos Rd., Aztec, NM 87410  
**District IV**  
1220 S. St. Francis Dr., Santa Fe, NM 87505

State of New Mexico  
Energy, Minerals & Natural Resources Department  
OIL CONSERVATION DIVISION  
1220 South St. Francis Dr.  
Santa Fe, NM 87505

**RECEIVED**  
DEC 06 2010  
**HOBBSOCD**

Form C-102  
Revised July 16, 2010  
Submit one copy to appropriate  
District Office  
☐ AMENDED REPORT

**WELL LOCATION AND ACREAGE DEDICATION PLAT**

<sup>1</sup> API Number 30-025-23655	<sup>2</sup> Pool Code 97806	<sup>3</sup> Pool Name Wildcat Wolfcamp
<sup>4</sup> Property Code	<sup>5</sup> Property Name New Mexico 87 State	<sup>6</sup> Well Number 1
<sup>7</sup> OGRID No. 151323	<sup>8</sup> Operator Name Pride Energy Company	<sup>9</sup> Elevation 4,118 GR

<sup>10</sup> Surface Location

UL or lot no.	Section	Township	Range	Lot Idn	Feet from the	North/South line	Feet from the	East/West line	County
K	33	14S	34E	K	2086	South	1874	West	Lea

<sup>11</sup> Bottom Hole Location If Different From Surface

UL or lot no.	Section	Township	Range	Lot Idn	Feet from the	North/South line	Feet from the	East/West line	County
<sup>12</sup> Dedicated Acres 6.0	<sup>13</sup> Joint or Infill	<sup>14</sup> Consolidation Code		<sup>15</sup> Order No.					

No allowable will be assigned to this completion until all interests have been consolidated or a non-standard unit has been approved by the division.

<sup>16</sup> 	<sup>17</sup> <b>OPERATOR CERTIFICATION</b> <i>I hereby certify that the information contained herein is true and complete to the best of my knowledge and belief, and that this organization either owns a working interest or unleased mineral interest in the land including the proposed bottom hole location or has a right to drill this well at this location pursuant to a contract with an owner of such a mineral or working interest, or to a voluntary pooling agreement or a compulsory pooling order heretofore entered by the division.</i>  Matthew L. Pride      11/24/10 Signature      Date  Matthew L. Pride Printed Name  mattp@pride-energy.com E-mail Address
	<sup>18</sup> <b>SURVEYOR CERTIFICATION</b> <i>I hereby certify that the well location shown on this plat was plotted from field notes of actual surveys made by me or under my supervision, and that the same is true and correct to the best of my belief.</i>  Date of Survey Signature and Seal of Professional Surveyor:
	Certificate Number

NEW MEXICO OIL CONSERVATION COMMISSION  
WELL LOCATION AND ACREAGE DEDICATION PLAT

Form C-102  
Supersedes C-128  
Effective 1-1-65

All distances must be from the outer boundaries of the Section.

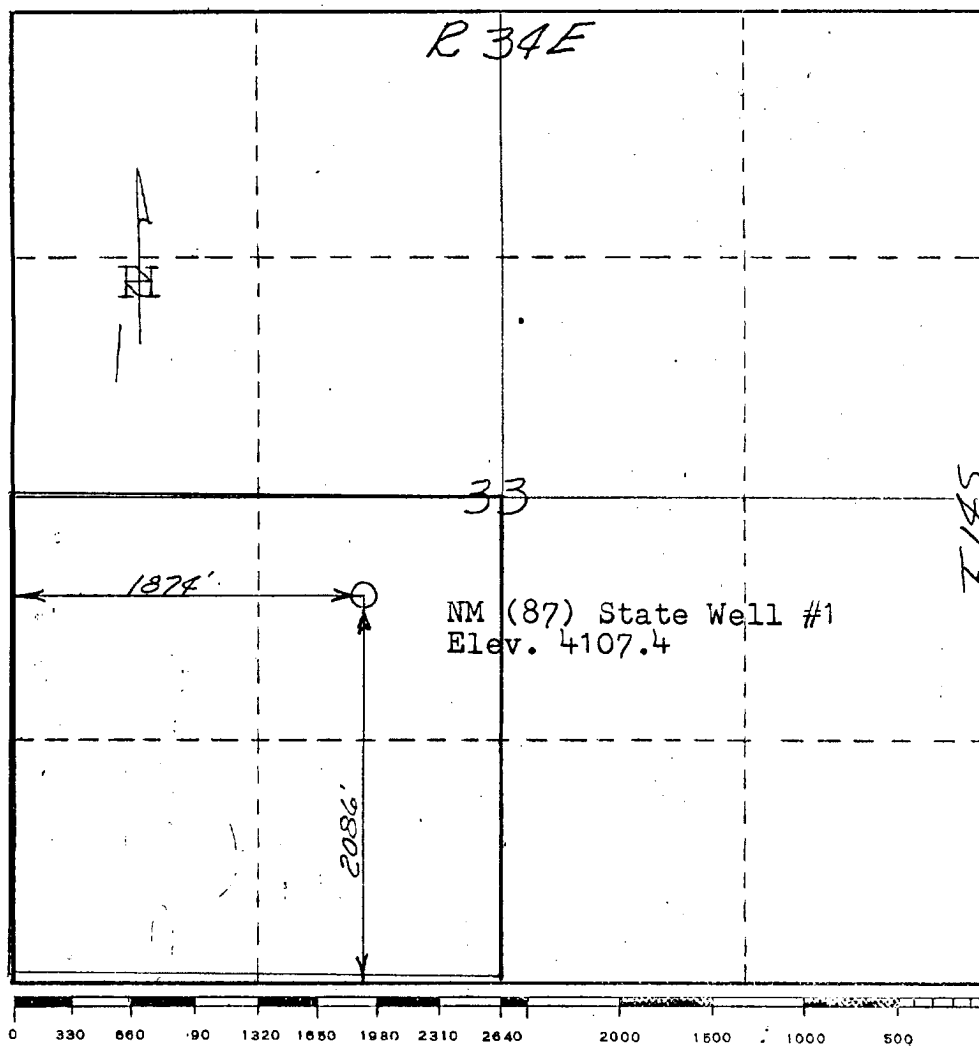
Operator <b>Lone Star Producing Co.</b>			Lease <b>NM (87) State</b>		Well No. <b>1</b>
Unit Letter <b>K</b>	Section <b>33</b>	Township <b>14 South</b>	Range <b>34 East</b>	County <b>Lea</b>	
Actual Footage Location of Well: <b>1874</b> feet from the <b>West</b> line and <b>2086</b> feet from the <b>South</b> line					
Ground Level Elev. <b>4107.4</b>	Producing Formation <b>Saunders Lime</b>		Pool <b>Tres Papalotes (Perm)</b>		Dedicated Acreage: <b>160</b> Acres

1. Outline the acreage dedicated to the subject well by colored pencil or hachure marks on the plat below.
2. If more than one lease is dedicated to the well, outline each and identify the ownership thereof (both as to working interest and royalty).
3. If more than one lease of different ownership is dedicated to the well, have the interests of all owners been consolidated by communitization, unitization, force-pooling, etc?

☐ Yes ☐ No If answer is "yes," type of consolidation **Not Applicable**

If answer is "no," list the owners and tract descriptions which have actually been consolidated. (Use reverse side of this form if necessary.)

No allowable will be assigned to the well until all interests have been consolidated (by communitization, unitization, forced-pooling, or otherwise) or until a non-standard unit, eliminating such interests, has been approved by the Commission.



CERTIFICATION

I hereby certify that the information contained herein is true and complete to the best of my knowledge and belief.

Name  
**E. C. Watson**  
Position  
**Asst. Dist. Prod. Supt.**  
Company  
**Lone Star Producing Company**  
Date  
**December 4, 1970**

I hereby certify that the well location shown on this plat was plotted from field notes of actual surveys made by me or under my supervision, and that the same is true and correct to the best of my knowledge and belief.

December 2, 1970

Date Surveyed  
**James T. Bridgforth**  
Registered Professional Engineer  
and/or Land Surveyor

NM No. 3510

Certificate No.