

RECEIVED

DISTRICT I
1625 N. French Dr., Hobbs, NM 88240

DISTRICT II
1301 W. Grand Avenue, Artesia, NM 88210

DISTRICT III
1000 Rio Brazos Rd., Aztec, NM 87410

DISTRICT IV
1220 S. St. Francis Dr., Santa Fe, NM 87505

State of New Mexico
Energy, Minerals and Natural Resources Department

Form C-102
Revised October 12, 2005

Submit to Appropriate District Office
State Lease - 4 Copies
Fee Lease - 3 Copies

DEC 13 2010

HOBBSON

CONSERVATION DIVISION

1220 South St. Francis Dr.
Santa Fe, New Mexico 87505

WELL LOCATION AND ACREAGE DEDICATION PLAT

☐ AMENDED REPORT

API Number 30-005-29139	Pool Code 97722	Pool Name Abo/Wolfcamp Wildcat
Property Code 37526	Property Name FRANKLIN "18" FEDERAL COM	Well Number 3
OGRID No. 162683	Operator Name CIMAREX ENERGY CO. OF COLORADO	Elevation 4449'

Surface Location

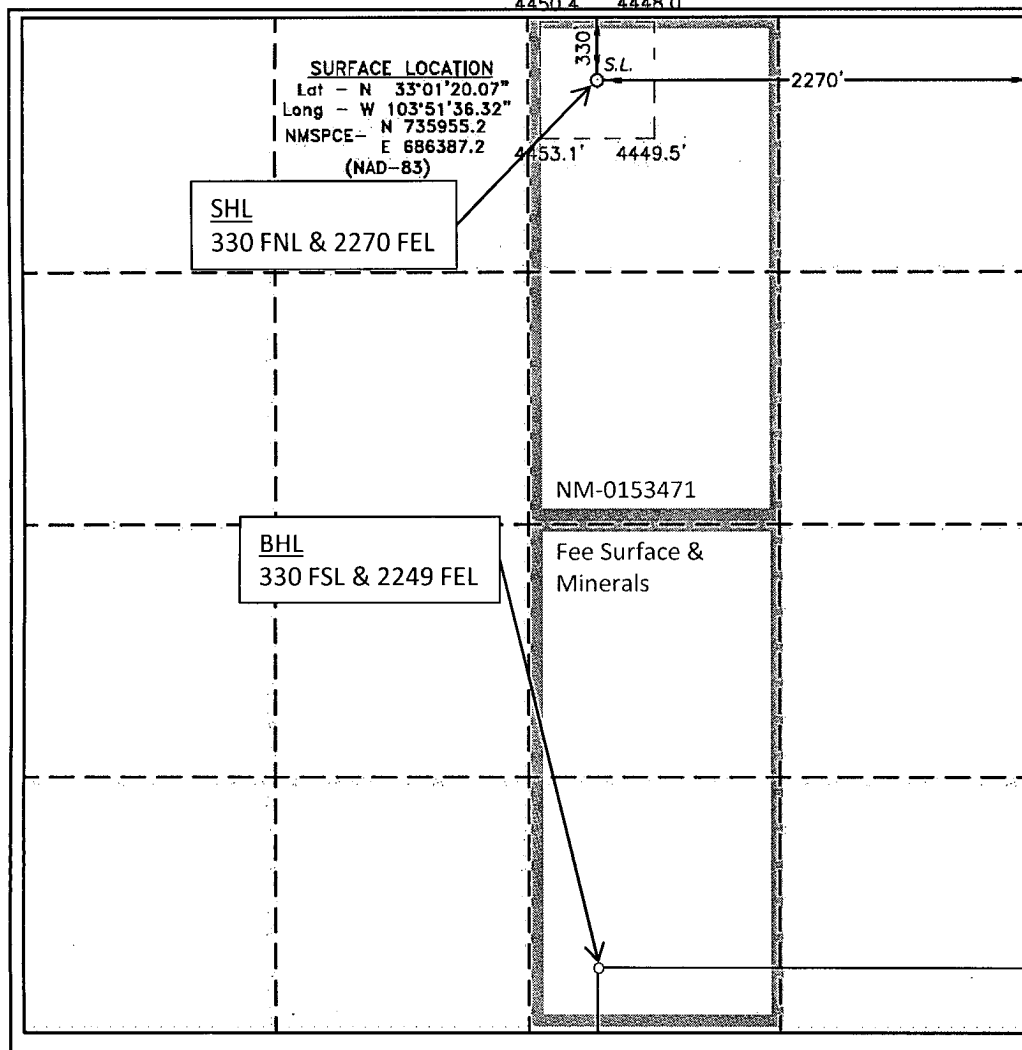
UL or lot No.	Section	Township	Range	Lot Idn	Feet from the	North/South line	Feet from the	East/West line	County
B	18	15 S	31 E		330	NORTH	2270	EAST	CHAVES

Bottom Hole Location If Different From Surface

UL or lot No.	Section	Township	Range	Lot Idn	Feet from the	North/South line	Feet from the	East/West line	County
O	18	15 S	31 E		330	SOUTH	2249	EAST	CHAVES

Dedicated Acres 160	Joint or Infill	Consolidation Code P	Order No.
------------------------	-----------------	-------------------------	-----------

NO ALLOWABLE WILL BE ASSIGNED TO THIS COMPLETION UNTIL ALL INTERESTS HAVE BEEN CONSOLIDATED
OR A NON-STANDARD UNIT HAS BEEN APPROVED BY THE DIVISION



OPERATOR CERTIFICATION	
I hereby certify that the information contained herein is true and complete to the best of my knowledge and belief, and that this organization either owns a working interest or unleased mineral interest in the land including the proposed bottom hole location pursuant to a contract with an owner of such a mineral or working interest, or to a voluntary pooling agreement or a compulsory pooling order heretofore entered by the division.	
Signature <i>Natalie Krueger</i>	Date 12/8/2010
Printed Name Natalie Krueger	
SURVEYOR CERTIFICATION	
I hereby certify that the well location shown on this plat was plotted from field notes of actual surveys made by me or under my supervision, and that the same is true and correct to the best of my belief.	
Date Surveyed NOVEMBER 16, 2010	
Signature & Seal of Professional Surveyor <i>Gary L. Jones</i>	
Certificate No. Gary L. Jones 7977	
BASIN SURVEYS	