

District I  
1625 N. French Dr., Hobbs, NM 88240  
District II  
1301 W. Grand Avenue, Artesia, NM 88210  
District III  
1000 Rio Brazos Road, Aztec, NM 87410  
District IV  
1220 S. St. Francis Dr., Santa Fe, NM 87505

State of New Mexico  
Energy Minerals and Natural Resources

Form C-101  
June 16, 2008

Oil Conservation Division  
1220 South St. Francis Dr.  
Santa Fe, NM 87505

Submit to appropriate District Office

☐ AMENDED REPORT

**APPLICATION FOR PERMIT TO DRILL, RE-ENTER, DEEPEN, PLUGBACK, OR ADD A ZONE**

<sup>1</sup> Operator Name and Address <b>PALADIN ENERGY CORP {164070}</b> <b>10290 Monroe Dr Ste 301, Dallas, TX 75229</b>		<sup>2</sup> OGRID Number <b>164070</b>
<sup>3</sup> Property Code <b>24985</b>	<sup>4</sup> Property Name <b>STATE EC C {24985}</b>	<sup>5</sup> API Number <b>30 - 025 - 39992</b>
<sup>9</sup> Proposed Pool 1 <b>CAPROCK;SAN ANDRES {9150}</b>		<sup>10</sup> Proposed Pool 2 <b>4</b>

<sup>7</sup> Surface Location

UL or lot no.	Section	Township	Range	Lot Idn	Feet from the	North/South line	Feet from the	East/West line	County
<b>G</b>	<b>11</b>	<b>12S</b>	<b>32E</b>		<b>1980</b>	<b>NORTH</b>	<b>1650</b>	<b>EAST</b>	<b>LEA</b>

<sup>8</sup> Proposed Bottom Hole Location If Different From Surface

UL or lot no.	Section	Township	Range	Lot Idn	Feet from the	North/South line	Feet from the	East/West line	County

Additional Well Information

<sup>11</sup> Work Type Code <b>N</b>	<sup>12</sup> Well Type Code <b>O</b>	<sup>13</sup> Cable/Rotary <b>R</b>	<sup>14</sup> Lease Type Code <b>S</b>	<sup>15</sup> Ground Level Elevation <b>4346</b>
<sup>16</sup> Multiple <b>NO</b>	<sup>17</sup> Proposed Depth <b>5000</b>	<sup>18</sup> Formation <b>SAN ANDRES</b>	<sup>19</sup> Contractor <b>Unknown</b>	<sup>20</sup> Spud Date <b>1st quarter 2011</b>

<sup>21</sup> Proposed Casing and Cement Program

Hole Size	Casing Size	Casing weight/foot	Setting Depth	Sacks of Cement	Estimated TOC
<b>12.25</b>	<b>9.625</b>	<b>40</b>	<b>400</b>	<b>365</b>	<b>0</b>
<b>7.875</b>	<b>5.5</b>	<b>17 &amp; 20</b>	<b>5000</b>	<b>700</b>	<b>0</b>

<sup>22</sup> Describe the proposed program. If this application is to DEEPEN or PLUG BACK, give the data on the present productive zone and proposed new productive zone. Describe the blowout prevention program, if any. Use additional sheets if necessary.

**BOP - Program will be submitted when rig type is determined**

**RECEIVED**

**DEC 23 2010**

**HOBBSOCD**

<sup>23</sup> I hereby certify that the information given above is true and complete to the best of my knowledge and belief.

Signature:

Printed name:

**Eddie Seay**

Title:

**Agent**

E-mail Address:

**seay04@leaco.net**

Date:

**12/20/2010**

Phone:

**575-390-2454**

OIL CONSERVATION DIVISION

Approved by:

Title:

**Geologist**

Approval Date:

**12/23/10**

Expiration Date:

**12/23/12**

Conditions of Approval Attached ☐

*12/23/10*

State of New Mexico

DISTRICT I

1625 N. FRENCH DR., HOBBS, NM 88240

Energy, Minerals and Natural Resources Department

Form C-102

DISTRICT II

1301 W. GRAND AVENUE, ARTESIA, NM 88210

OIL CONSERVATION DIVISION

1220 SOUTH ST. FRANCIS DR.  
Santa Fe, New Mexico 87505

Revised October 12, 2005

Submit to Appropriate District Office

State Lease - 4 Copies

Fee Lease - 3 Copies

DISTRICT III

1000 Rio Brazos Rd., Aztec, NM 87410

DISTRICT IV

1220 S. ST. FRANCIS DR., SANTA FE, NM 87505

WELL LOCATION AND ACREAGE DEDICATION PLAT

☐ AMENDED REPORT

API Number <b>30-025-38992</b>	Pool Code <b>9150</b>	Pool Name <b>CAPROCK, SAN ANDRES</b>
Property Code <b>24985</b>	Property Name <b>STATE ECC</b>	Well Number <b>4</b>
OGRID No. <b>164070</b>	Operator Name <b>PALADIN ENERGY CORPORATION</b>	Elevation <b>4346'</b>

Surface Location

UL or lot No.	Section	Township	Range	Lot Idn	Feet from the	North/South line	Feet from the	East/West line	County
<b>GH</b>	<b>11</b>	<b>12-S</b>	<b>32-E</b>		<b>1980</b>	<b>NORTH</b>	<b>1650</b>	<b>EAST</b>	<b>LEA</b>

Bottom Hole Location If Different From Surface

UL or lot No.	Section	Township	Range	Lot Idn	Feet from the	North/South line	Feet from the	East/West line	County

Dedicated Acres <b>40</b>	Joint or Infill	Consolidation Code	Order No.
------------------------------	-----------------	--------------------	-----------

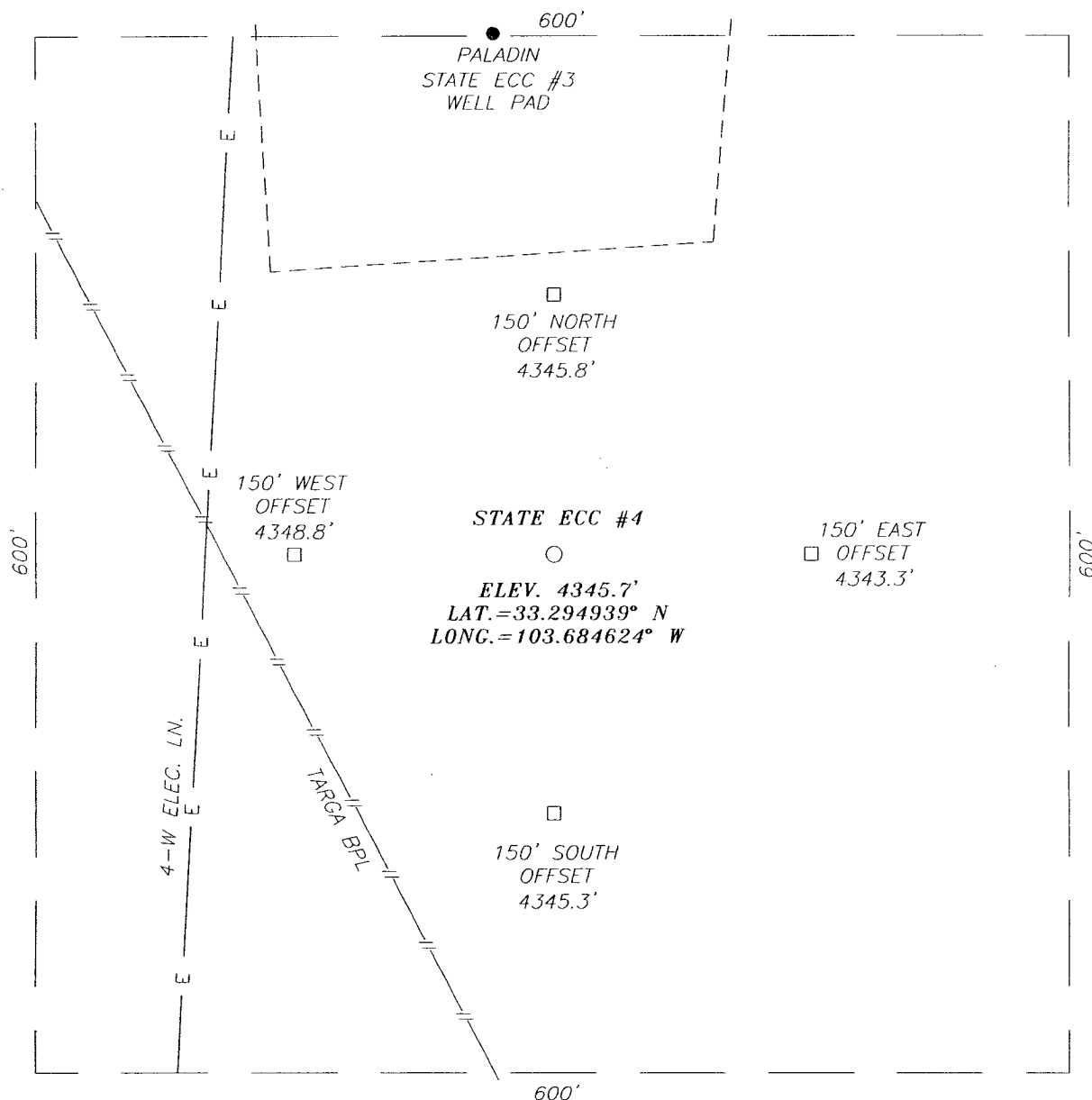
NO ALLOWABLE WILL BE ASSIGNED TO THIS COMPLETION UNTIL ALL INTERESTS HAVE BEEN CONSOLIDATED  
OR A NON-STANDARD UNIT HAS BEEN APPROVED BY THE DIVISION

<p>GEODETIC COORDINATES NAD 27 NME</p> <p>Y=835434.5 N X=698220.9 E</p> <p>LAT.=33.294939° N LONG.=103.684624° W</p>	<p><b>OPERATOR CERTIFICATION</b></p> <p>I hereby certify that the information herein is true and complete to the best of my knowledge and belief, and that this organization either owns a working interest or unleased mineral interest in the land including the proposed bottom hole location or has a right to drill this well at this location pursuant to a contract with an owner of such mineral or working interest, or to a voluntary pooling agreement or a compulsory pooling order heretofore entered by the division.</p> <p><i>[Signature]</i> <b>12/19/2010</b> Signature Date</p> <p><b>David Plaisance</b> Printed Name</p>
	<p><b>SURVEYOR CERTIFICATION</b></p> <p>I hereby certify that the well location shown on this plat was plotted from field notes of actual surveys made by me or under my supervision, and that the same is true and correct to the best of my belief.</p> <p>DECEMBER 6, 2010</p> <p>Date Surveyed LA</p> <p><i>[Signature]</i> Signature of Professional Surveyor</p> <p><b>RONALD J. EIDSON</b> REGISTERED PROFESSIONAL SURVEYOR NEW MEXICO 10.11.1774</p> <p>Certificate No. <b>GARY EIDSON 12641</b> 12641 3239</p>

# SECTION 11, TOWNSHIP 12 SOUTH, RANGE 32 EAST, N.M.P.M.,

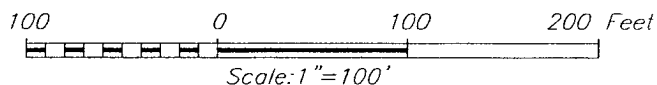
LEA COUNTY,

NEW MEXICO



## DIRECTIONS TO LOCATION

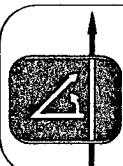
FROM THE INTERSECTION OF SOLDIER HILL RD. (T-158) AND AMERADA (T-159) GO SOUTH ON AMERADA APPROX. 0.9 MILES. GO 0.1 MILE WEST. THEN GO APPROX. 0.3 MILES SOUTH. THEN GO APPROX. 0.2 MILES. THEN GO EAST APPROX. 0.2 MILES. THEN GO APPROX. 0.2 MILES SOUTH. THE LOCATION STAKE IS APPROX. 315 FEET EAST.



## PALADIN ENERGY CORPORATION

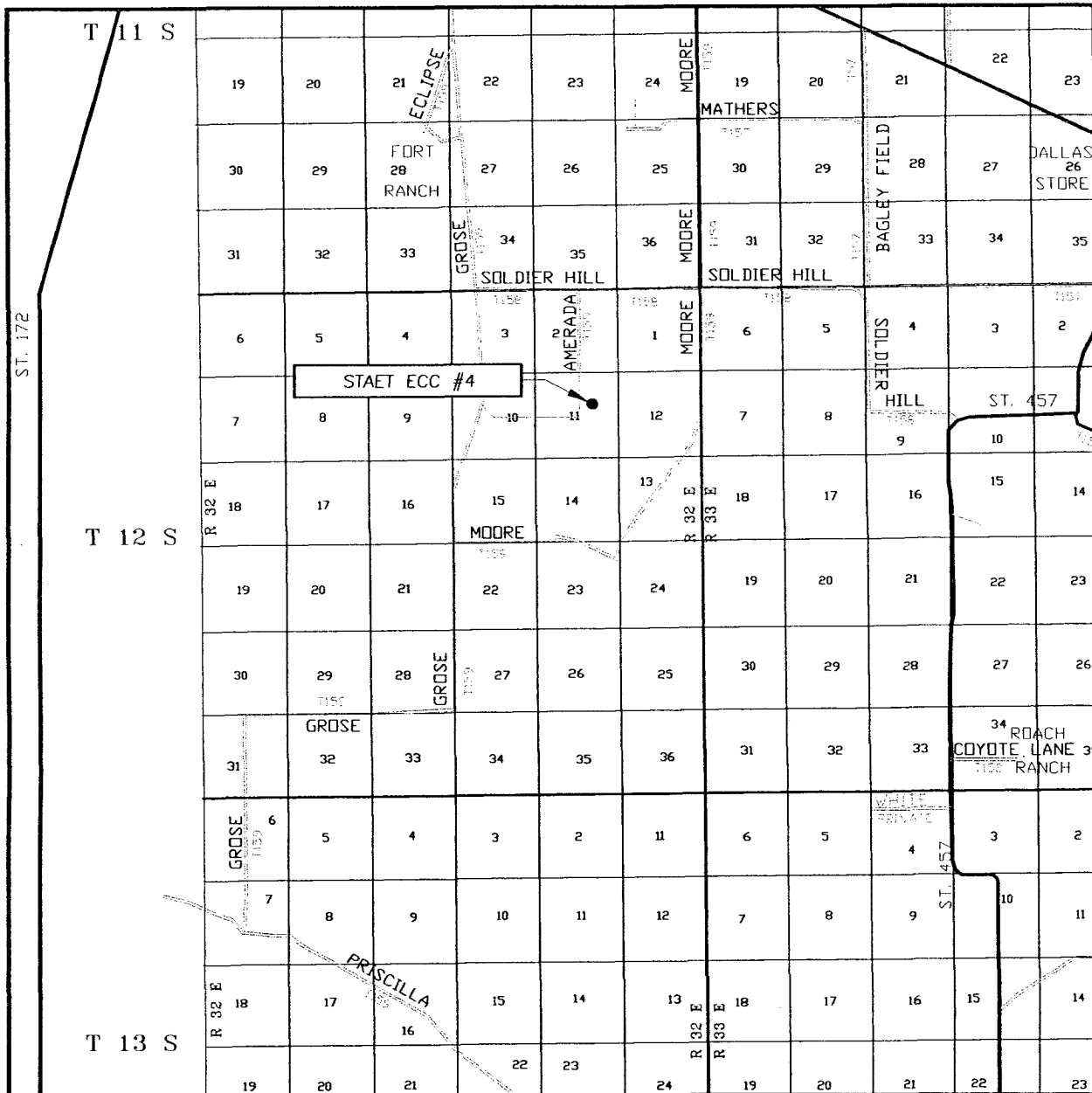
STATE ECC #4 WELL  
LOCATED 1980 FEET FROM THE NORTH LINE  
AND 1650 FEET FROM THE EAST LINE OF SECTION 11,  
TOWNSHIP 12 SOUTH, RANGE 32 EAST, N.M.P.M.,  
LEA COUNTY, NEW MEXICO.

Survey Date: 12/6/10	Sheet 1 of 1 Sheets
W.O. Number: 10.11.1774	Dr By: LA
Date: 12/14/10	Rev 1: N/A
10111774	Scale: 1"=100'



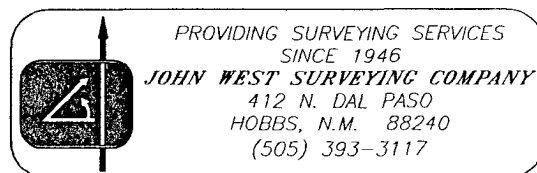
PROVIDING SURVEYING SERVICES  
SINCE 1946  
**JOHN WEST SURVEYING COMPANY**  
412 N. DAL PASO  
HOBBS, N.M. 88240  
(505) 393-3117

# VICINITY MAP

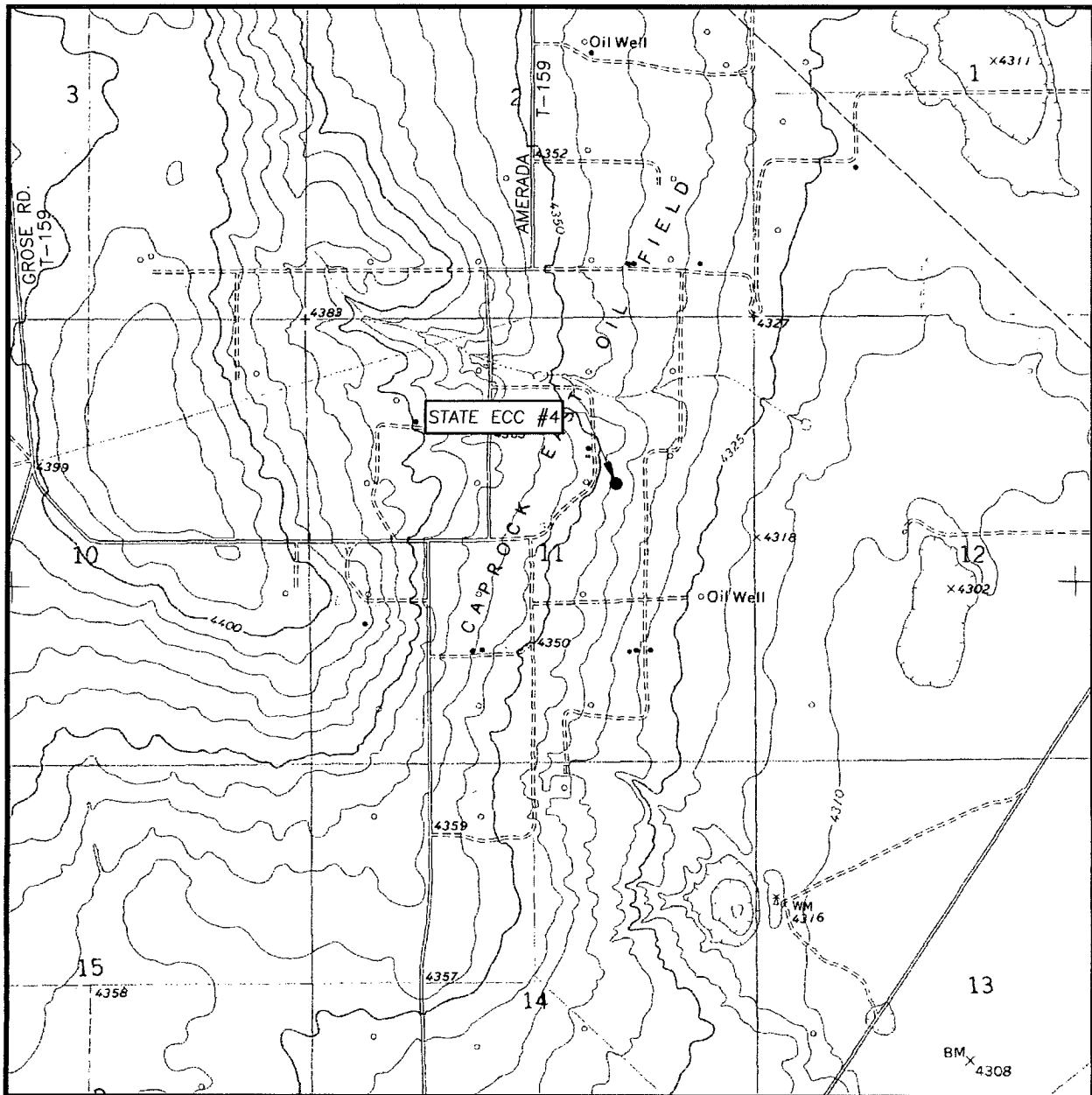


SCALE: 1" = 2 MILES

SEC. 11 TWP. 12-S RGE. 32-E  
 SURVEY N.M.P.M.  
 COUNTY LEA STATE NEW MEXICO  
 DESCRIPTION 1980' FNL & 1650' FEL  
 ELEVATION 4346'  
 OPERATOR PALADIN ENERGY CORPORATION  
 LEASE STATE ECC



# LOCATION VERIFICATION MAP



SCALE: 1" = 2000'

CONTOUR INTERVAL:  
SOLDIER HILL, N.M. - 5'

SEC. 11 TWP. 12-S RGE. 32-E

SURVEY N.M.P.M.

COUNTY LEA STATE NEW MEXICO

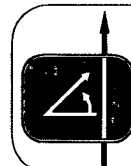
DESCRIPTION 1980' FNL & 1650' FEL

ELEVATION 4346'

OPERATOR PALADIN ENERGY CORPORATION

LEASE STATE ECC

U.S.G.S. TOPOGRAPHIC MAP  
SOLDIER HILL, N.M.



PROVIDING SURVEYING SERVICES  
SINCE 1946  
**JOHN WEST SURVEYING COMPANY**  
412 N. DAL PASO  
HOBBS, N.M. 88240  
(505) 393-3117