

DISTRICT I
1625 N. FRENCH DR., HOBBS, NM 88240

DISTRICT II
1301 W. GRAND AVENUE, ARTESIA, NM 88210

DISTRICT III
1000 RIO BRAZOS RD., AZTEC, NM 87410

DISTRICT IV
11885 S. ST. FRANCIS DR., SANTA FE, NM 87505

State of New Mexico
Energy, Minerals and Natural Resources Department

OIL CONSERVATION DIVISION
11885 SOUTH ST. FRANCIS DR.
Santa Fe, New Mexico 87505

Form C-102

Revised October 12, 2005
Submit to Appropriate District Office
State Lease - 4 Copies
Fee Lease - 3 Copies

WELL LOCATION AND ACREAGE DEDICATION PLAT

☐ AMENDED REPORT

API Number 30-025~40014	Pool Code 7900	Pool Name Brunson Drinkard - Abo Soeth
Property Code 306625	Property Name WALTER LYNCH	Well Number 14
OGRID No. 873	Operator Name APACHE CORPORATION	Elevation 3360'

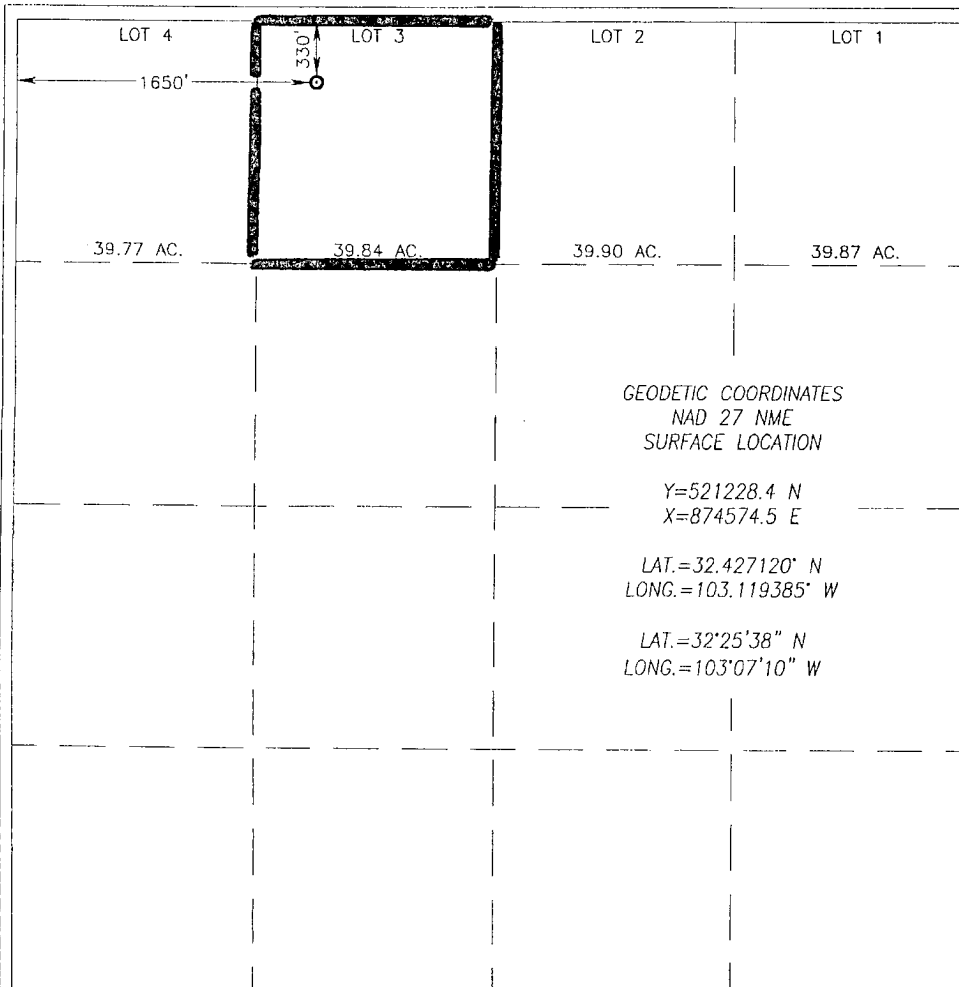
Surface Location

UL or lot No. C (3)	Section 1	Township 22-S	Range 37-E	Lot Idn	Feet from the 330	North/South line NORTH	Feet from the 1650	East/West line WEST	County LEA
------------------------	--------------	------------------	---------------	---------	----------------------	---------------------------	-----------------------	------------------------	---------------

Bottom Hole Location If Different From Surface

UL or lot No.	Section	Township	Range	Lot Idn	Feet from the	North/South line	Feet from the	East/West line	County
Dedicated Acres 39.84		Joint or Infill	Consolidation Code		Order No.				

NO ALLOWABLE WILL BE ASSIGNED TO THIS COMPLETION UNTIL ALL INTERESTS HAVE BEEN CONSOLIDATED
OR A NON-STANDARD UNIT HAS BEEN APPROVED BY THE DIVISION



OPERATOR CERTIFICATION

I hereby certify that the information herein is true and complete to the best of my knowledge and belief, and that this organization either owns a working interest or unleased mineral interest in the land including the proposed bottom hole location or has a right to drill this well at this location pursuant to a contract with an owner of such mineral or working interest, or to a voluntary pooling agreement or a compulsory pooling order heretofore entered by the division.

Nicki Brown 1/11/2011
Signature Date
Vicki Brown
Printed Name

SURVEYOR CERTIFICATION

I hereby certify that the well location shown on this plat was plotted from field notes of actual surveys made by me or under my supervision, and that the same is true and correct to the best of my belief.

DECEMBER 17, 2010

Date Surveyed DSS

Signature & Seal of Professional Surveyor
Ronald G. Eidson 12/17/2010
10.11.1846

Certificate No. GARY G. EIDSON 12641
RONALD G. EIDSON 3239

DISTRICT I
1625 N. FRENCH DR., HOBBS, NM 88240

State of New Mexico
Energy, Minerals and Natural Resources Department

Form C-102

DISTRICT II
1301 W. GRAND AVENUE, ARTESIA, NM 88210

OIL CONSERVATION DIVISION

Revised October 12, 2005

Submit to Appropriate District Office

State Lease - 4 Copies

Fee Lease - 3 Copies

DISTRICT III
1000 RIO BRAZOS RD., AZTEC, NM 87410

11885 SOUTH ST. FRANCIS DR.
Santa Fe, New Mexico 87505

DISTRICT IV
11885 S. ST. FRANCIS DR., SANTA FE, NM 87505

WELL LOCATION AND ACREAGE DEDICATION PLAT

☐ AMENDED REPORT

API Number 30-025-40014	Pool Code 60240	Pool Name Teeb D. 14 Gas (D14)
Property Code 306625	Property Name WALTER LYNCH	Well Number 14
OGRID No. 873	Operator Name APACHE CORPORATION	Elevation 3360'

Surface Location

UL or lot No. C (3)	Section 1	Township 22-S	Range 37-E	Lot Idn	Feet from the 330	North/South line NORTH	Feet from the 1650	East/West line WEST	County LEA
------------------------	--------------	------------------	---------------	---------	----------------------	---------------------------	-----------------------	------------------------	---------------

Bottom Hole Location If Different From Surface

UL or lot No.	Section	Township	Range	Lot Idn	Feet from the	North/South line	Feet from the	East/West line	County
Dedicated Acres 39.84	Joint or Infill	Consolidation Code	Order No.						

NO ALLOWABLE WILL BE ASSIGNED TO THIS COMPLETION UNTIL ALL INTERESTS HAVE BEEN CONSOLIDATED
OR A NON-STANDARD UNIT HAS BEEN APPROVED BY THE DIVISION

LOT 4 1650'	LOT 3 330'	LOT 2	LOT 1
39.77 AC.	39.84 AC.	39.90 AC.	39.87 AC.
GEODETTIC COORDINATES NAD 27 NME SURFACE LOCATION Y=521228.4 N X=874574.5 E LAT.=32.427120° N LONG.=103.119385° W LAT.=32°25'38" N LONG.=103°07'10" W			
OPERATOR CERTIFICATION I hereby certify that the information herein is true and complete to the best of my knowledge and belief, and that this organization either owns a working interest or unleased mineral interest in the land including the proposed bottom hole location or has a right to drill this well at this location pursuant to a contract with an owner of such mineral or working interest, or to a voluntary pooling agreement or a compulsory pooling order heretofore entered by the division. Vicki Brown 1/11/2011 Signature Date Vicki Brown Printed Name			
SURVEYOR CERTIFICATION I hereby certify that the well location shown on this plat was plotted from field notes of actual surveys made by me or under my supervision, and that the same is true and correct to the best of my belief. DECEMBER 17, 2010 Date Surveyed Signature & Seal of Professional Surveyor Professional Surveyor Certificate No. GARY G. EDSON 12641 RONALD J. EDSON 3239			

DISTRICT I
1625 N. FRENCH DR., HOBBS, NM 88240

State of New Mexico
Energy, Minerals and Natural Resources Department

Form C-102

Revised October 12, 2005

DISTRICT II
1301 W. GRAND AVENUE, ARTESIA, NM 88210

OIL CONSERVATION DIVISION

Submit to Appropriate District Office

State Lease - 4 Copies

Fee Lease - 3 Copies

DISTRICT III
1000 RIO BRAZOS RD., AZTEC, NM 87410

11885 SOUTH ST. FRANCIS DR.
Santa Fe, New Mexico 87505

DISTRICT IV
11885 S. ST. FRANCIS DR., SANTA FE, NM 87505

WELL LOCATION AND ACREAGE DEDICATION PLAT

☐ AMENDED REPORT

API Number 30-025-40014	Pool Code 6660	Pool Name Blinberry Dil & Gas (Oil)
Property Code 306625	Property Name WALTER LYNCH	Well Number 14
OGRID No. 873	Operator Name APACHE CORPORATION	Elevation 3360'

Surface Location

UL or lot No. C (3)	Section 1	Township 22-S	Range 37-E	Lot Idn	Feet from the 330	North/South line NORTH	Feet from the 1650	East/West line WEST	County LEA
------------------------	--------------	------------------	---------------	---------	----------------------	---------------------------	-----------------------	------------------------	---------------

Bottom Hole Location If Different From Surface

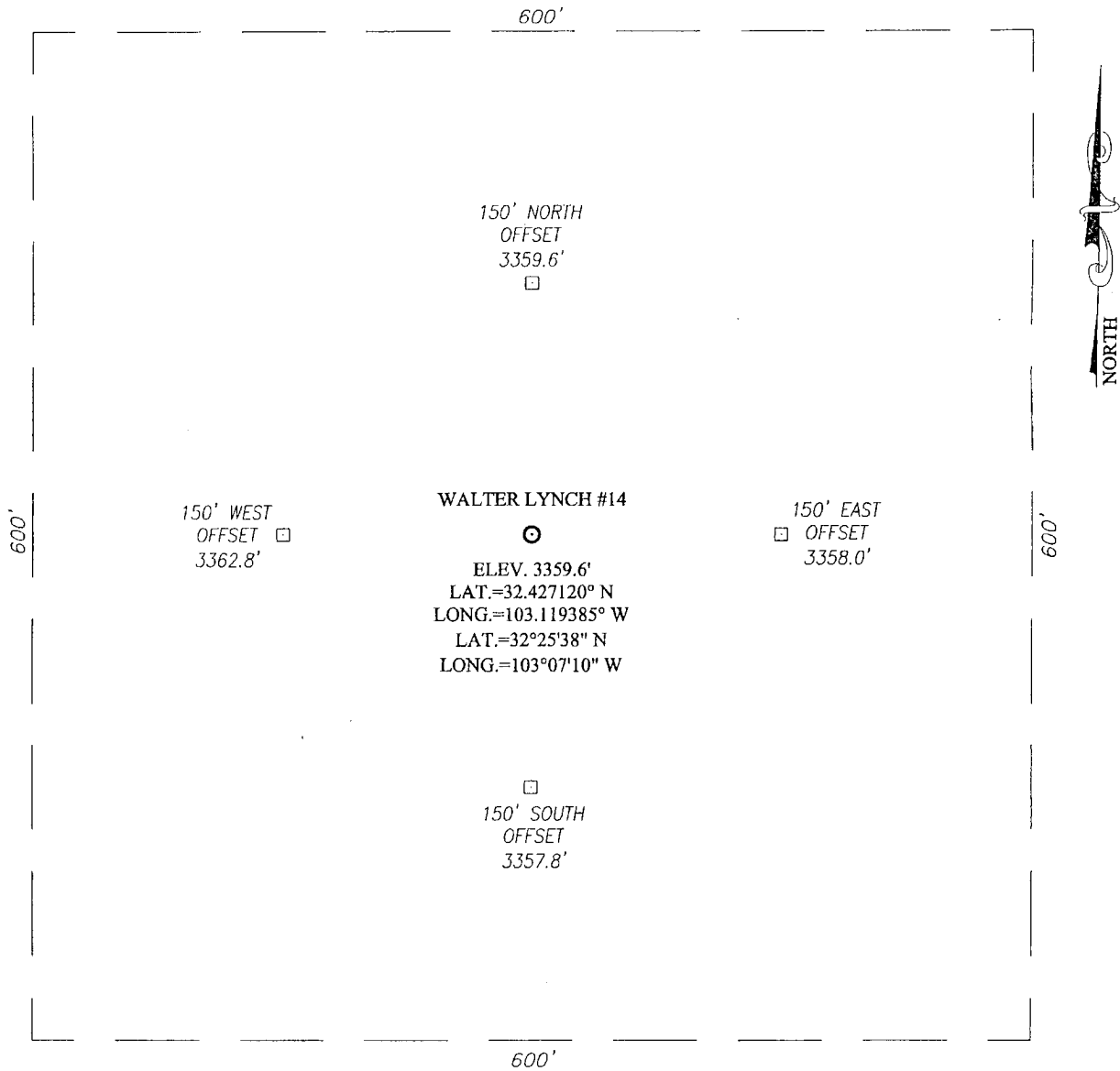
UL or lot No.	Section	Township	Range	Lot Idn	Feet from the	North/South line	Feet from the	East/West line	County
---------------	---------	----------	-------	---------	---------------	------------------	---------------	----------------	--------

Dedicated Acres 39.84	Joint or Infill	Consolidation Code	Order No.
--------------------------	-----------------	--------------------	-----------

NO ALLOWABLE WILL BE ASSIGNED TO THIS COMPLETION UNTIL ALL INTERESTS HAVE BEEN CONSOLIDATED
OR A NON-STANDARD UNIT HAS BEEN APPROVED BY THE DIVISION

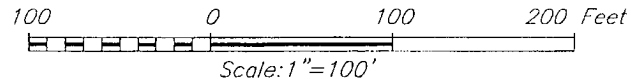
LOT 4	LOT 3	LOT 2	LOT 1
1650'	330'		
39.77 AC.	39.84 AC.	39.90 AC.	39.87 AC.
GEODETIC COORDINATES NAD 27 NME SURFACE LOCATION Y=521228.4 N X=874574.5 E LAT.=32.427120° N LONG.=103.119385° W LAT.=32°25'38" N LONG.=103°07'10" W			
OPERATOR CERTIFICATION I hereby certify that the information herein is true and complete to the best of my knowledge and belief, and that this organization either owns a working interest or unleased mineral interest in the land including the proposed bottom hole location or has a right to drill this well at this location pursuant to a contract with an owner of such mineral or working interest, or to a voluntary pooling agreement or a compulsory pooling order heretofore entered by the division. Vicki Brown 1/11/2011 Signature Date Vicki Brown Printed Name			
SURVEYOR CERTIFICATION I hereby certify that the well location shown on this plat was plotted from field notes of actual surveys made by me or under my supervision, and that the same is true and correct to the best of my belief. DECEMBER 17, 2010 Date Surveyed Signature & Seal of Professional Surveyor GARY G. EIDSON 10.11.1846 Certificate No. GARY G. EIDSON 12641 RONALD J. EIDSON 3239			

SECTION 1, TOWNSHIP 22 SOUTH, RANGE 37 EAST, N.M.P.M.,
LEA COUNTY NEW MEXICO



DIRECTIONS TO LOCATION

FROM THE INTERSECTION ST. HWY. #18 AND CO.
RD. #E17 (DRINKARD RD.), GO SOUTH ON CO.
RD. #E17 APPROX. 0.3 MILES. TURN LEFT AND
GO EAST ON EXISTING LEASE ROAD APPROX. 0.3
MILES. TURN LEFT AND GO NORTH APPROX. 0.2
MILES. TURN RIGHT AND GO EAST APPROX. 400
FEET. THIS LOCATION STAKE IS APPROX. 350
NORTH OF LEASE ROAD.



APACHE CORPORATION

WALTER LYNCH #14 WELL
LOCATED 330 FEET FROM THE NORTH LINE
AND 1650 FEET FROM THE WEST LINE OF SECTION 1,
TOWNSHIP 22 SOUTH, RANGE 37 EAST, N.M.P.M.,
LEA COUNTY, NEW MEXICO.

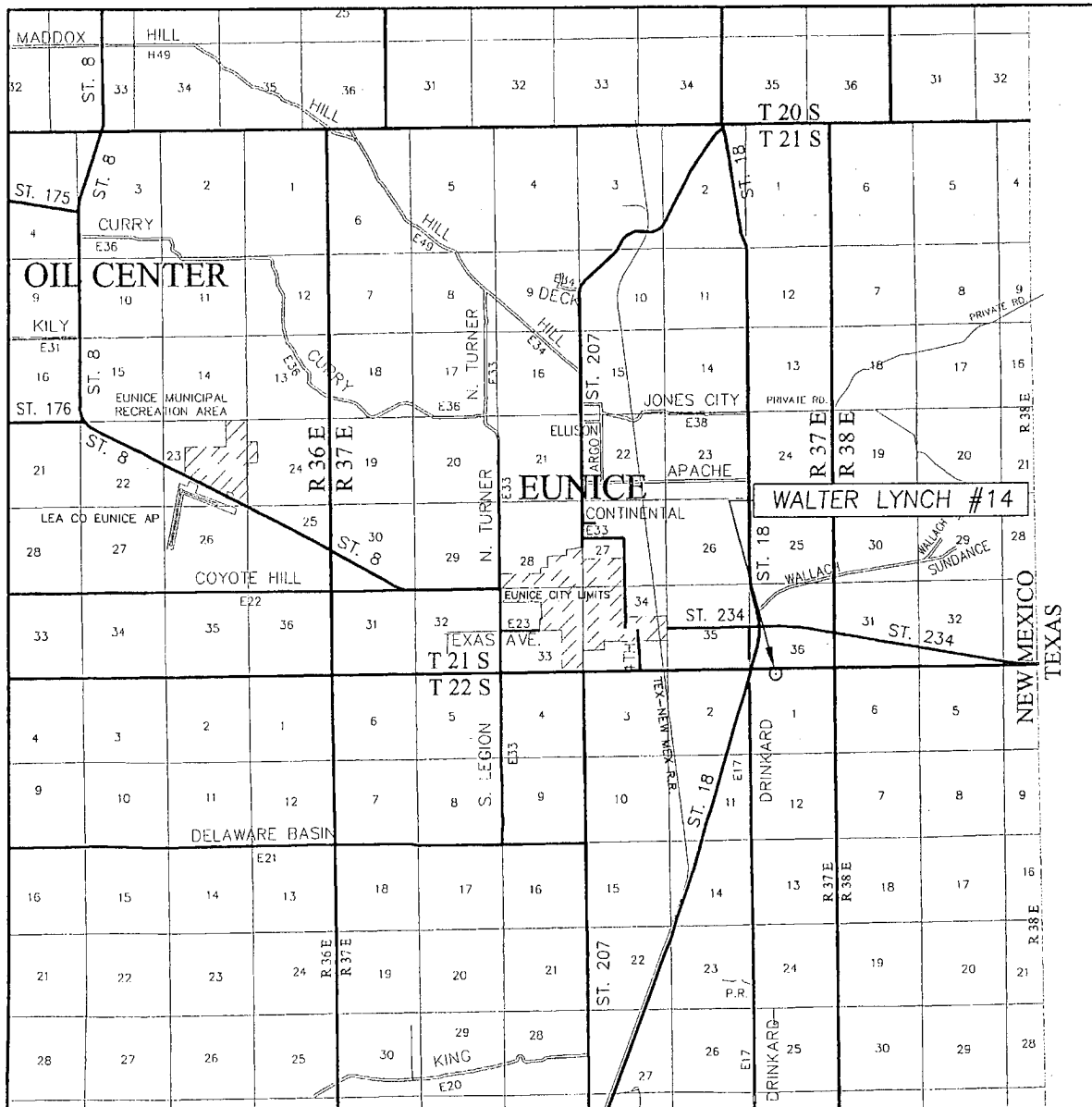
Survey Date: 12/17/10	Sheet 1 of 1 Sheets
W.O. Number: 10.11.1846	Dr By: DSS
Date: 1/3/11	10111846
	Scale: 1"=100'

PROVIDING SURVEYING SERVICES
SINCE 1946

JOHN WEST SURVEYING COMPANY


412 N. DAL PASO
HOBBS, N.M. 88240
(575) 393-3117

VICINITY MAP



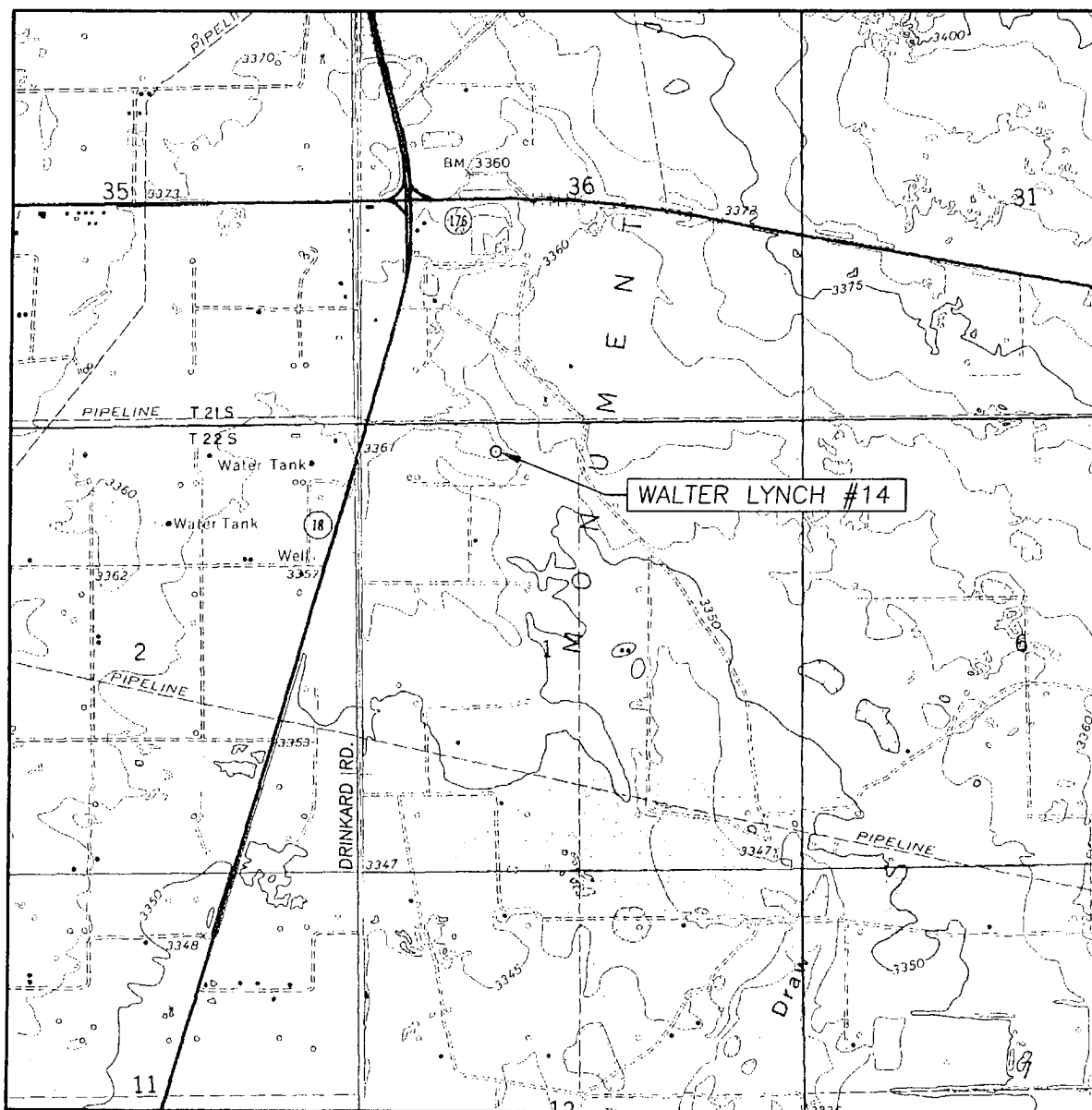
SCALE: 1" = 2 MILES

SEC. 1 TWP. 22-S RGE. 37-E
 SURVEY N.M.P.M.
 COUNTY LEA STATE NEW MEXICO
 DESCRIPTION 330' FNL & 1650' FWL
 ELEVATION 3,360'
 OPERATOR APACHE CORPORATION
 LEASE WALTER LYNCH



PROVIDING SURVEYING SERVICES
 SINCE 1946
JOHN WEST SURVEYING COMPANY
 412 N. DAL PASO
 HOBBS, N.M. 88240
 (575) 393-3117

LOCATION VERIFICATION MAP



SCALE: 1" = 2000'

CONTOUR INTERVAL:

EUNICE, N.M. - 10'

EUNICE NE, N.M. - 5'

SEC. 1 TWP. 22-S RGE. 37-E

SURVEY N.M.P.M.

COUNTY LEA STATE NEW MEXICO

DESCRIPTION 330' FNL & 1650' FWL

ELEVATION 3360'

OPERATOR APACHE CORPORATION

LEASE WALTER LYNCH

U.S.G.S. TOPOGRAPHIC MAP

EUNICE NE, N.M.

