

District I
1625 N. French Dr., Hobbs, NM 88240

District II
1301 W. Grand Avenue, Artesia, NM 88210

District III
1000 Rio Brazos Road, Aztec, NM 87410

District IV
1220 S. St. Francis Dr., Santa Fe, NM 87505

State of New Mexico
Energy Minerals and Natural Resources

Form C-101
June 16, 2008

Oil Conservation Division
1220 South St. Francis Dr.
Santa Fe, NM 87505

Submit to appropriate District Office

☐ AMENDED REPORT

APPLICATION FOR PERMIT TO DRILL, RE-ENTER, DEEPEN, PLUGBACK, OR ADD A ZONE

¹ Operator Name and Address Yates Petroleum Corporation 105 South Fourth Street Artesia, NM 88210		² OGRID Number 025575
³ Property Code 34501		³ API Number 30 - 025 - 36985
⁵ Property Name East Sand Springs BGE State Com		⁶ Well No. 9
⁹ Proposed Pool 1 sand springs Per Wildcat, Upper Penn		¹⁰ Proposed Pool 2

⁷ Surface Location

UL or lot no. D	Section 35	Township 10S	Range 34E	Lot Idn	Feet from the 1040	North/South line North	Feet from the 1040	East/West line West	County Lea
--------------------	---------------	-----------------	--------------	---------	-----------------------	---------------------------	-----------------------	------------------------	---------------

⁸ Proposed Bottom Hole Location If Different From Surface

UL or lot no.	Section	Township	Range	Lot Idn	Feet from the	North/South line	Feet from the	East/West line	County
---------------	---------	----------	-------	---------	---------------	------------------	---------------	----------------	--------

Additional Well Information

¹¹ Work Type Code P	¹² Well Type Code O	¹³ Cable/Rotary N/A	¹⁴ Lease Type Code S	¹⁵ Ground Level Elevation 4183'GL
¹⁶ Multiple N	¹⁷ Proposed Depth N/A	¹⁸ Formation Mississippian	¹⁹ Contractor N/A	²⁰ Spud Date N/A

²¹ Proposed Casing and Cement Program

Hole Size	Casing Size	Casing weight/foot	Setting Depth	Sacks of Cement	Estimated TOC
IN PLACE					

Describe the proposed program. If this application is to DEEPEN or PLUG BACK, give the data on the present productive zone and proposed new productive zone. Describe the blowout prevention program, if any. Use additional sheets if necessary.

Yates Petroleum Corporation plans to plugback and recompleate this well as follows: MIRU WSU. NU BOP. Release packer and TOH with tubing. Set a CIBP at 11,600' with 35' cement on top. Perforate Upper Penn 9972'-9979' (7) and 10,006'-10,015' (9). Stimulate as needed. Run appropriate production string and turn well to production.

Permit Expires 2 Years From Approval
Date Unless Drilling Underway
Plugback

²³ I hereby certify that the information given above is true and complete to the best of my knowledge and belief.

Signature:

Tina Huerta

Printed name: Tina Huerta

Title: Regulatory Compliance Supervisor

E-mail Address: tina@yatespetroleum.com

Date: January 6, 2011

Phone: 575-748-4168

OIL CONSERVATION DIVISION

Approved by:

[Signature]

Title:

PETROLEUM ENGINEER

Approval Date: JAN 18 2011

Expiration Date:

OCD CONDITION OF APPROVAL for Drilling:
Intent to drill ONLY --- CANNOT produce until the Non-Standard
Location has been approved by OCD Santa Fe office.

District I

1625 N. French Dr., Hobbs, NM 88240

District II

1301 W. Grand Avenue, Artesia, NM 88210

District III

1000 Rio Brazos Rd., Aztec, NM 87410

District IV

1220 S. St. Francis Dr., Santa Fe, NM 87505

State of New Mexico

Energy, Minerals & Natural Resources Department

OIL CONSERVATION DIVISION

1220 South St. Francis Dr.

Santa Fe, NM 87505

Form C-102

Revised July 16, 2010

Submit one copy to appropriate

District Office

☐ AMENDED REPORT

WELL LOCATION AND ACREAGE DEDICATION PLAT

¹ API Number 30-025-36985	² Pool Code 97487	³ Pool Name Sand springs Permian Wildcat Upper Penn
⁴ Property Code 34501	⁵ Property Name East Sand Springs BGE State Com	
⁷ OGRID No. 025575	⁸ Operator Name Yates Petroleum Corporation	⁶ Well Number 9
		⁹ Elevation 4183'GL

¹⁰ Surface Location

UL or lot no.	Section	Township	Range	Lot Idn	Feet from the	North/South line	Feet from the	East/West line	County
D	35	10S	34E		1040	North	1040	West	Lea

¹¹ Bottom Hole Location If Different From Surface

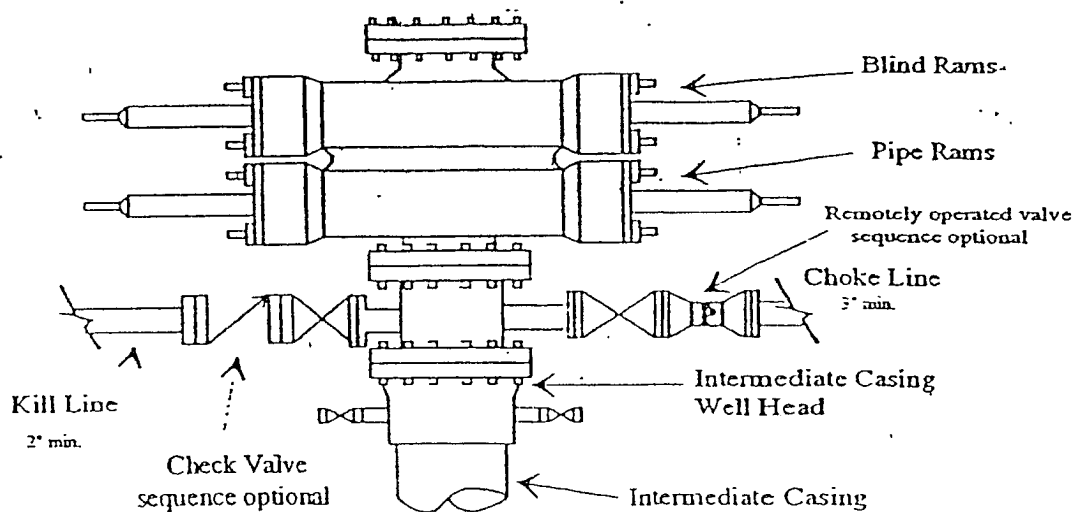
UL or lot no.	Section	Township	Range	Lot Idn	Feet from the	North/South line	Feet from the	East/West line	County
¹² Dedicated Acres 40	¹³ Joint or Infill	¹⁴ Consolidation Code		¹⁵ Order No.					

No allowable will be assigned to this completion until all interests have been consolidated or a non-standard unit has been approved by the division.

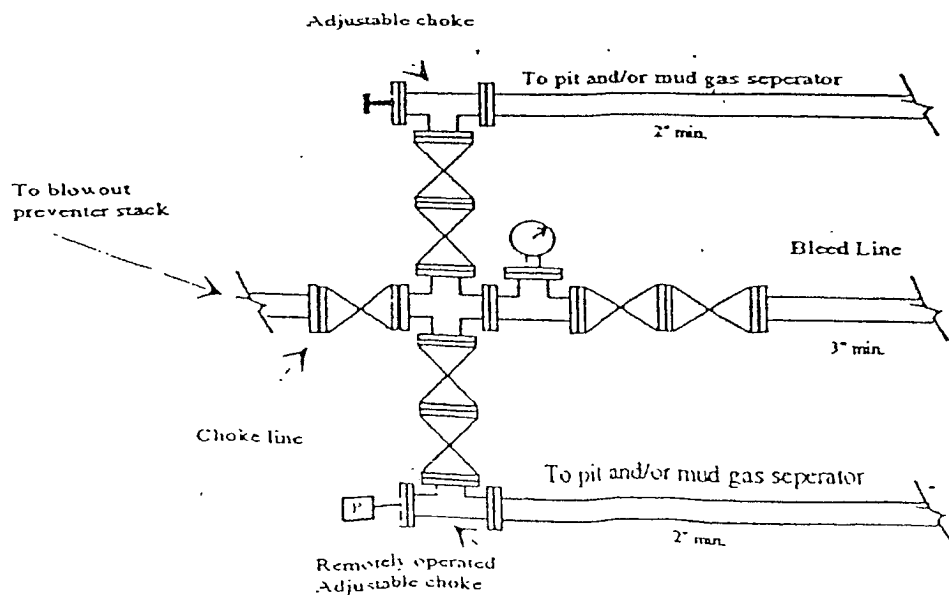
¹⁶ 				¹⁷ OPERATOR CERTIFICATION I hereby certify that the information contained herein is true and complete to the best of my knowledge and belief, and that this organization either owns a working interest or unleased mineral interest in the land including the proposed bottom hole location or has a right to drill this well at this location pursuant to a contract with an owner of such a mineral or working interest, or to a voluntary pooling agreement or a compulsory pooling order heretofore entered by the division. Signature Date January 6, 2011 Tina Huerta Printed Name tinah@yatespetroleum.com E-mail Address
				¹⁸ SURVEYOR CERTIFICATION I hereby certify that the well location shown on this plat was plotted from field notes of actual surveys made by me or under my supervision, and that the same is true and correct to the best of my belief. Date of Survey Signature and Seal of Professional Surveyor: Certificate Number

Yates Petroleum Corporation

Typical 3,000 psi Pressure System Schematic



Typical 3,000 psi choke manifold assembly with at least these minimum features



Well Name: East Sand Springs BGE St. Com. #9 Field: _____

Location: 1040' FNL & 1040' FWL Sec. 35-10S-34E Lea Co, NM

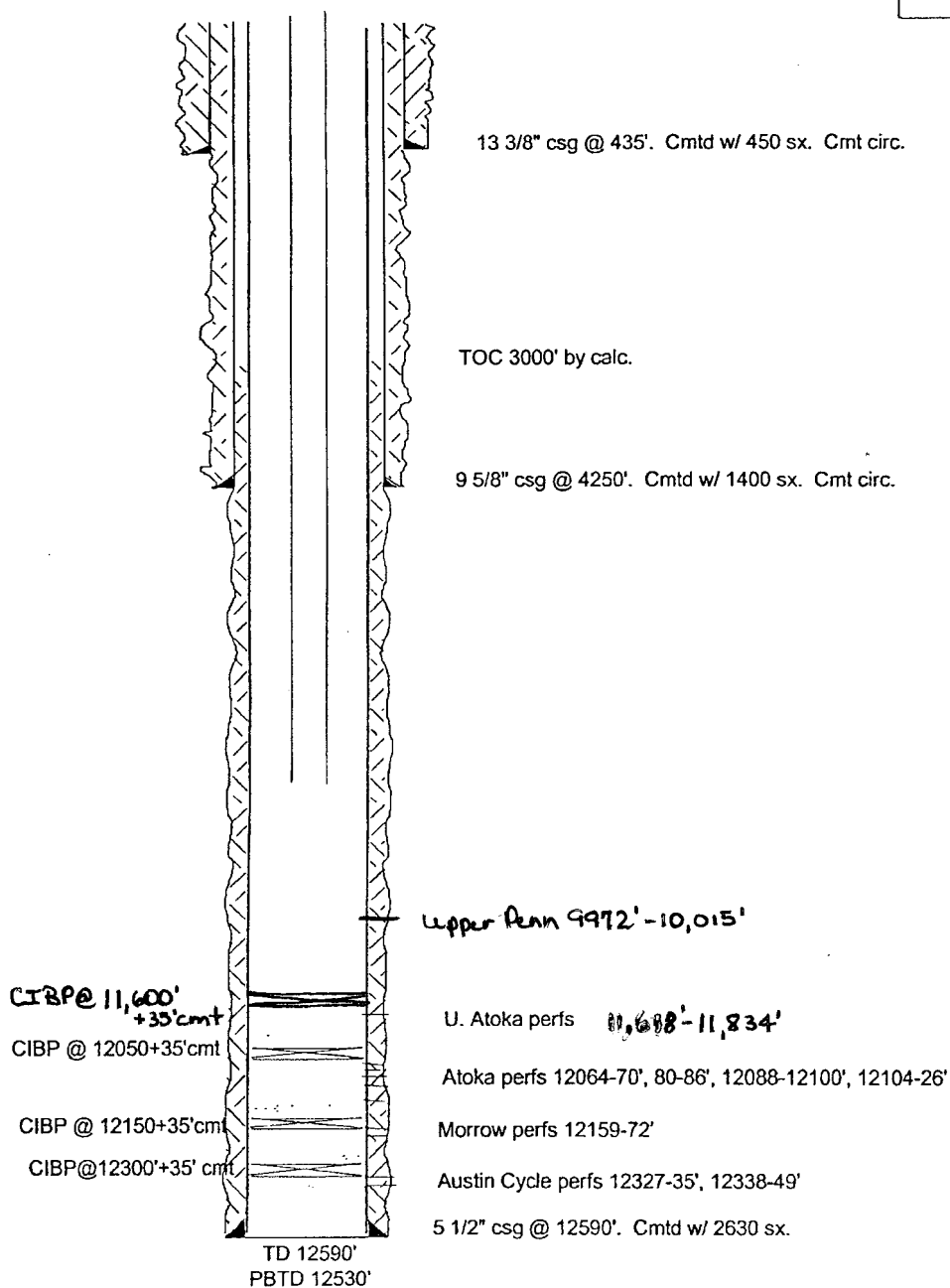
GL: 4183' Zero: _____ AGL: _____ KB: 4203.5'

Spud Date: 12-03-05 Completion Date: _____

Comments: _____

Casing Program	
Size/Wt/Grade/Conn	Depth Set
13 3/8" 48# HE	435'
9 5/8" 36 & 40#	4250'
5 1/2" 17# J55, L80, P110	12590'

PROPOSED CONFIGURATION



SKETCH NOT TO SCALE

DATE: 10/16/08 ESSU9E