

DISTRICT I  
1625 N. French Dr., Hobbs, NM 88240

DISTRICT II  
1301 W. Grand Avenue, Artesia, NM 88210

DISTRICT III  
1000 Rio Brazos Rd., Aztec, NM 87410

DISTRICT IV  
1220 S. St. Francis Dr., Santa Fe, NM 87505

State of New Mexico  
Energy, Minerals and Natural Resources Department

Form C-102  
Revised July 16, 2010

Submit one copy to appropriate  
District Office

**OIL CONSERVATION DIVISION**  
1220 South St. Francis Dr.  
Santa Fe, New Mexico 87505

**WELL LOCATION AND ACREAGE DEDICATION PLAT**

☐ AMENDED REPORT

API Number <b>30-025-40020</b>	Pool Code <b>33230</b>	Pool Name <b>House; Blinbry</b>
Property Code <b>303221</b>	Property Name <b>LUCKY STRIKE</b>	Well Number <b>3</b>
GRID No. <b>873</b>	Operator Name <b>APACHE CORPORATION</b>	Elevation <b>3576'</b>

**Surface Location**

UL or lot No.	Section	Township	Range	Lot Idn	Feet from the	North/South line	Feet from the	East/West line	County
<b>1</b>	<b>14</b>	<b>20 S</b>	<b>38 E</b>		<b>2310</b>	<b>SOUTH</b>	<b>330</b>	<b>EAST</b>	<b>LEA</b>

**Bottom Hole Location If Different From Surface**

UL or lot No.	Section	Township	Range	Lot Idn	Feet from the	North/South line	Feet from the	East/West line	County
Dedicated Acres <b>40</b>	Joint or Infill	Consolidation Code	Order No.						

NO ALLOWABLE WILL BE ASSIGNED TO THIS COMPLETION UNTIL ALL INTERESTS HAVE BEEN CONSOLIDATED  
OR A NON-STANDARD UNIT HAS BEEN APPROVED BY THE DIVISION

**OPERATOR CERTIFICATION**

I hereby certify that the information contained herein is true and complete to the best of my knowledge and belief, and that this organization either owns a working interest or unleased mineral interest in the land including the proposed bottom hole location or has a right to drill this well at this location pursuant to a contract with an owner of such a mineral or working interest, or to a voluntary pooling agreement or a compulsory pooling order heretofore entered by the division.

Sorina L. Flores 1/19/11  
Signature Date

Sorina L. Flores  
Printed Name

Sorina.Flores@apachecorp.com  
Email Address

**SURVEYOR CERTIFICATION**

I hereby certify that the well location shown on this plat was plotted from field notes of actual surveys made by me or under my supervision and that the same is true and correct to the best of my belief.

GARY L. JONES  
Date Surveyed  
Signature & Seal of Professional Surveyor  
7977

Certificate No. Gary L. Jones 7977

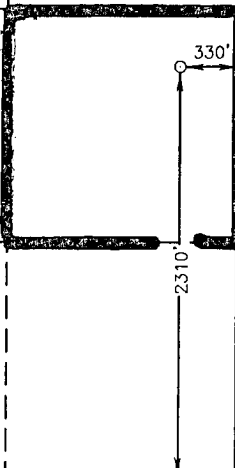
BASIN SURVEYS 24034

**SURFACE LOCATION**

Lat - N 32°34'19.823"  
Long - W 103°06'42.437"  
NMSPCE- N 574047.078  
E 917643.659  
(NAD-83)

**SURFACE LOCATION**

Lat - N 32°34'19.41"  
Long - W 103°06'40.73"  
NMSPCE- N 573988.126  
E 876461.226  
(NAD-27)



## DISTRICT I

1625 N. French Dr., Hobbs, NM 88240

## DISTRICT II

1301 W. Grand Avenue, Artesia, NM 88210

## DISTRICT III

1000 Rio Brazos Rd., Aztec, NM 87410

## DISTRICT IV

1220 S. St. Francis Dr., Santa Fe, NM 87505

State of New Mexico  
Energy, Minerals and Natural Resources Department

## OIL CONSERVATION DIVISION

1220 South St. Francis Dr.  
Santa Fe, New Mexico 87505

Form C-102

Revised July 16, 2010

Submit one copy to appropriate  
District Office

## WELL LOCATION AND ACREAGE DEDICATION PLAT

☐ AMENDED REPORT

API Number <b>30-025-40020</b>	Pool Code <b>78760</b>	Pool Name <b>House; Tubb</b>
Property Code <b>303221</b>	Property Name <b>LUCKY STRIKE</b>	Well Number <b>3</b>
OGRD No. <b>873</b>	Operator Name <b>APACHE CORPORATION</b>	Elevation <b>3576'</b>

## Surface Location

UL or lot No.	Section	Township	Range	Lot Idn	Feet from the	North/South line	Feet from the	East/West line	County
<b>1</b>	<b>14</b>	<b>20 S</b>	<b>38 E</b>		<b>2310</b>	<b>SOUTH</b>	<b>330</b>	<b>EAST</b>	<b>LEA</b>

## Bottom Hole Location If Different From Surface

UL or lot No.	Section	Township	Range	Lot Idn	Feet from the	North/South line	Feet from the	East/West line	County

Dedicated Acres <b>40</b>	Joint or Infill	Consolidation Code	Order No.
------------------------------	-----------------	--------------------	-----------

NO ALLOWABLE WILL BE ASSIGNED TO THIS COMPLETION UNTIL ALL INTERESTS HAVE BEEN CONSOLIDATED  
OR A NON-STANDARD UNIT HAS BEEN APPROVED BY THE DIVISION

## OPERATOR CERTIFICATION

I hereby certify that the information contained herein is true and complete to the best of my knowledge and belief, and that this organization either owns a working interest or unleased mineral interest in the land including the proposed bottom hole location or has a right to drill this well at this location pursuant to a contract with an owner of such a mineral or working interest, or to a voluntary pooling agreement or a compulsory pooling order heretofore entered by the division.

Sorina L. Flores 1/19/11  
Signature Date

Sorina L. Flores  
Printed Name

Sorina.L.flores@apachecorp.com  
Email Address

## SURVEYOR CERTIFICATION

I hereby certify that the well location shown on this plat was plotted from field notes of actual surveys made by me or under my supervision, and that the same is true and correct to the best of my belief.

GARY L. JONES  
Date Surveyed  
Signature & Seal of Professional Surveyor  
7977

Certificate No. Gary L. Jones 7977

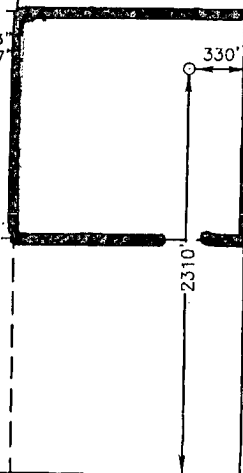
BASIN SURVEYS 24034

## SURFACE LOCATION

Lat - N 32°34'19.823"  
Long - W 103°06'42.437"  
NMSPCE- N 574047.078  
E 917643.659  
(NAD-83)

## SURFACE LOCATION

Lat - N 32°34'19.41"  
Long - W 103°06'40.73"  
NMSPCE- N 573988.126  
E 876461.226  
(NAD-27)



## DISTRICT I

1625 N. French Dr., Hobbs, NM 88240

## DISTRICT II

1301 W. Grand Avenue, Artesia, NM 88210

## DISTRICT III

1000 Rio Brazos Rd., Aztec, NM 87410

## DISTRICT IV

1220 S. St. Francis Dr., Santa Fe, NM 87505

State of New Mexico  
Energy, Minerals and Natural Resources Department

Form C-102

Revised July 16, 2010

Submit one copy to appropriate  
District Office

## OIL CONSERVATION DIVISION

1220 South St. Francis Dr.  
Santa Fe, New Mexico 87505

## WELL LOCATION AND ACREAGE DEDICATION PLAT

☐ AMENDED REPORT

API Number <b>30-025-40020</b>	Pool Code <b>33250</b>	Pool Name <b>House; Drinkard</b>
Property Code <b>303221</b>	Property Name <b>LUCKY STRIKE</b>	Well Number <b>3</b>
OGRID No. <b>873</b>	Operator Name <b>APACHE CORPORATION</b>	Elevation <b>3576'</b>

## Surface Location

UL or lot No.	Section	Township	Range	Lot Idn	Feet from the	North/South line	Feet from the	East/West line	County
<b>1</b>	<b>14</b>	<b>20 S</b>	<b>38 E</b>		<b>2310</b>	<b>SOUTH</b>	<b>330</b>	<b>EAST</b>	<b>LEA</b>

## Bottom Hole Location If Different From Surface

UL or lot No.	Section	Township	Range	Lot Idn	Feet from the	North/South line	Feet from the	East/West line	County

Dedicated Acres <b>40</b>	Joint or Infill	Consolidation Code	Order No.
------------------------------	-----------------	--------------------	-----------

NO ALLOWABLE WILL BE ASSIGNED TO THIS COMPLETION UNTIL ALL INTERESTS HAVE BEEN CONSOLIDATED  
OR A NON-STANDARD UNIT HAS BEEN APPROVED BY THE DIVISION

## OPERATOR CERTIFICATION

I hereby certify that the information contained herein is true and complete to the best of my knowledge and belief, and that this organization either owns a working interest or unleased mineral interest in the land including the proposed bottom hole location or has a right to drill this well at this location pursuant to a contract with an owner of such a mineral or working interest, or to a voluntary pooling agreement or a compulsory pooling order heretofore entered by the division.

**Sorina L. Flores** 1/19/11  
Signature Date

**Sorina L. Flores**  
Printed Name

**Sorina.Flores@apachecorp.com**  
Email Address

## SURVEYOR CERTIFICATION

I hereby certify that the well location shown on this plat was plotted from field notes of actual surveys made by me or under my supervision, and that the same is true and correct to the best of my belief.

**GARY L. JONES**  
Date Surveyed  
Signature & Seal of Professional Surveyor  
**NEW MEXICO**  
**Professional Surveyor**  
**7977**  
**W. O. Jones**

Certificate No. **Gary L. Jones 7977**

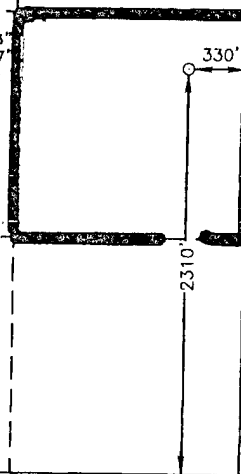
**BASIN SURVEYS 24034**

## SURFACE LOCATION

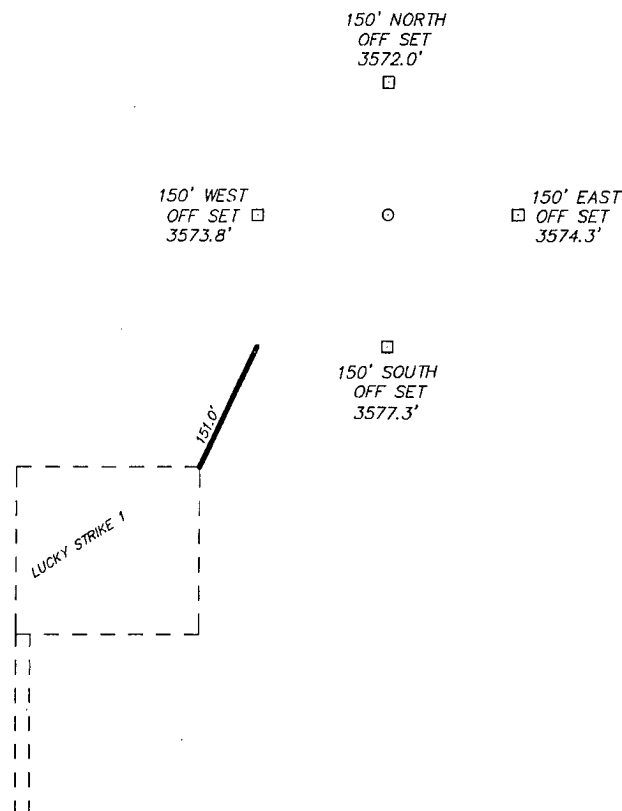
Lat - N 32°34'19.823"  
Long - W 103°06'42.437"  
NMSPC- N 574047.078  
E 917643.659  
(NAD-83)

## SURFACE LOCATION

Lat - N 32°34'19.41"  
Long - W 103°06'40.73"  
NMSPC- N 573988.126  
E 876461.226  
(NAD-27)



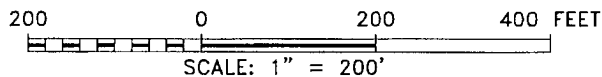
SECTION 14, TOWNSHIP 20 SOUTH, RANGE 38 EAST, N.M.P.M.,  
LEA COUNTY, NEW MEXICO.



APACHE CORPORATION  
LUCKY STRIKE #3  
ELEV. - 3576'

Lat - N 32°34'19.823"  
Long - W 103°06'42.437"  
NMSPCE- N 574047.078  
E 917643.659  
(NAD-83)

Lat - N 32°34'19.41"  
Long - W 103°06'40.73"  
NMSPCE- N 573988.126  
E 876461.226  
(NAD-27)



Directions to Location:

FROM THE JUNCTION OF THE EUNICE HWY AND  
McCASLAND, GO EAST ON McCASLAND FOR 0.9 MILES  
TO LEASE ROAD, ON LEASE ROAD GO NORTH 0.2  
MILES TO WELL PAD AND PROPOSED LEASE ROAD.

**BASIN SURVEYS** P.O. BOX 1786--HOBBS, NEW MEXICO

W.O. Number: 24034 Drawn By: J. SMALL

Date: 01-18-2011 Disk: JMS 24034

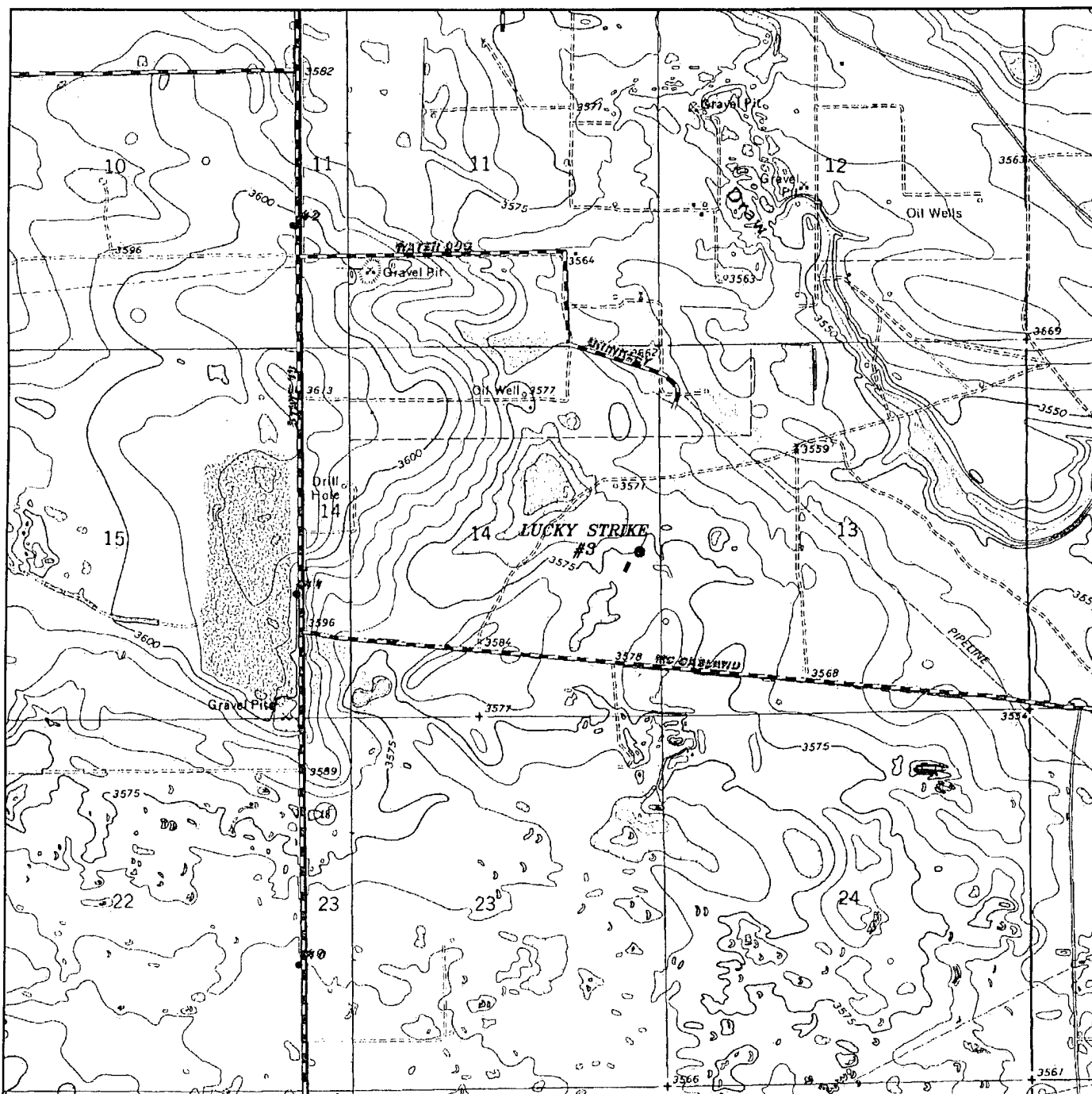
**APACHE CORPORATION**

REF: LUCKY STRIKE #3 / WELL PAD TOPO

THE LUCKY STRIKE #3 LOCATED 2310'

FROM THE SOUTH LINE AND 330' FROM THE EAST LINE OF  
SECTION 14, TOWNSHIP 20 SOUTH, RANGE 38 EAST,  
N.M.P.M., LEA COUNTY, NEW MEXICO.

Survey Date: 01-14-2011 Sheet 1 of 1 Sheets



LUCKY STRIKE #3

Located 2310' FSL and 330' FEL

Section 14, Township 20 South, Range 38 East,  
N.M.P.M., Lea County, New Mexico.



focused on excellence  
in the oilfield

P.O. Box 1786  
1120 N. West County Rd.  
Hobbs, New Mexico 88241  
(575) 393-7316 - Office  
(575) 392-2206 - Fax  
basinsurveys.com

W.O. Number: JMS 24034

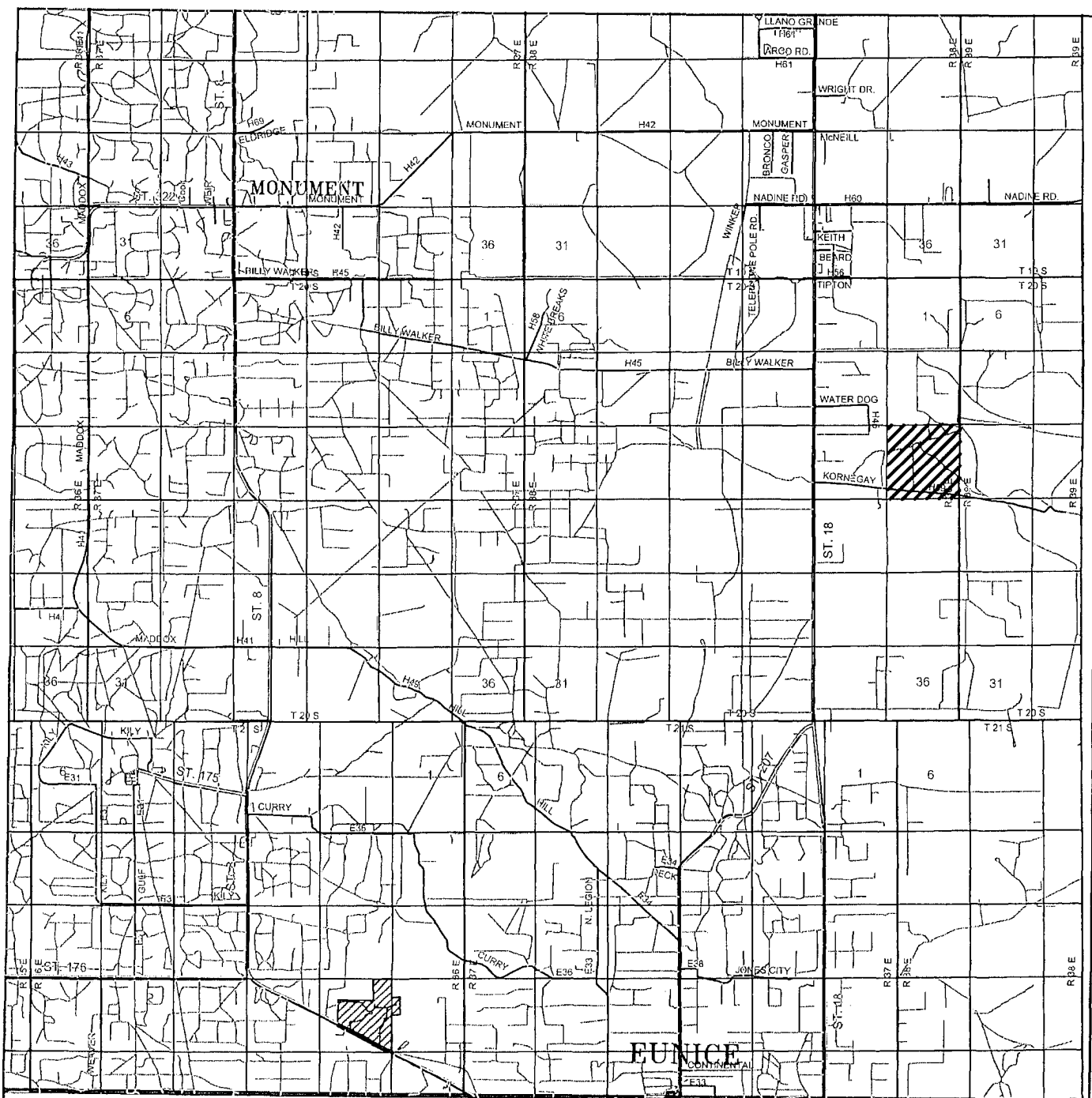
Survey Date: 01-14-2011

Scale: 1" = 2000'

Date: 01-18-2011



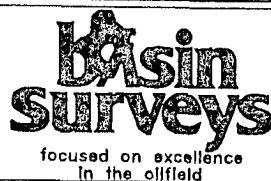
APACHE  
CORPORATION



### LUCKY STRIKE #3

Located 2310' FSL and 330' FEL

Section 14, Township 20 South, Range 38 East,  
N.M.P.M., Lea County, New Mexico.



P.O. Box 1786  
1120 N. West County Rd.  
Hobbs, New Mexico 88241  
(575) 393-7316 - Office  
(575) 392-2206 - Fax  
basinsurveys.com

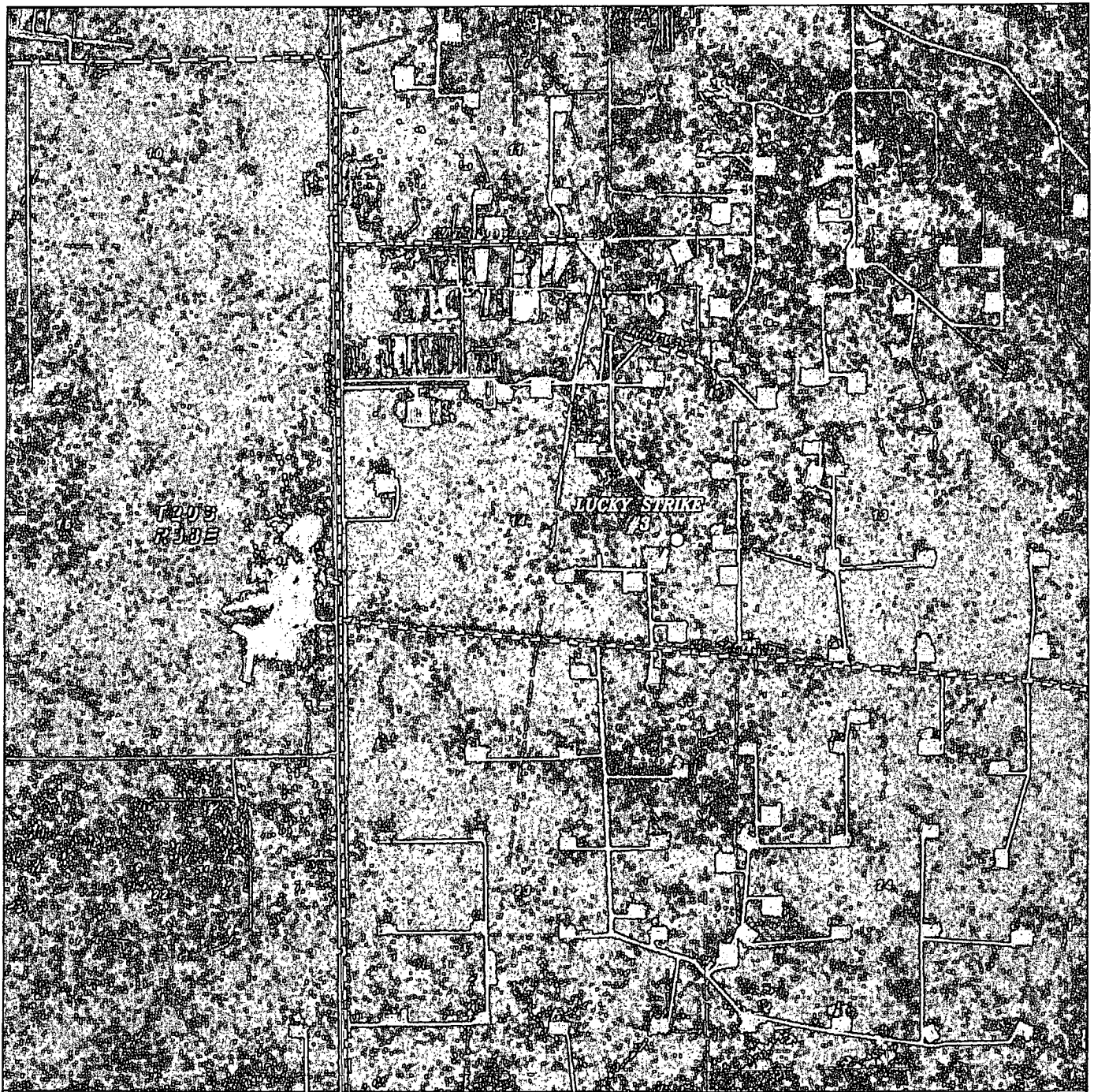
W.O. Number: JMS 24034

Survey Date: 01-14-2011

Scale: 1" = 2 Miles

Date: 01-18-2011

APACHE  
CORPORATION



### LUCKY STRIKE #3

Located 2310' FSL and 330' FEL

Section 14, Township 20 South, Range 38 East,  
N.M.P.M., Lea County, New Mexico.



P.O. Box 1786  
1120 N. West County Rd.  
Hobbs, New Mexico 88241  
(575) 393-7316 - Office  
(575) 392-2206 - Fax  
basinsurveys.com

W.O. Number: JMS 24034

Scale: 1" = 2000'

YELLOW TINT - USA LAND  
BLUE TINT - STATE LAND  
NATURAL COLOR - FEE LAND

APACHE  
CORPORATION