

DISTRICT I
1625 N. French Dr., Hobbs, NM 88240
DISTRICT II
1301 W. Grand Avenue, Artesia, NM 88210

DISTRICT III
1000 Rio Brazos Rd., Aztec, NM 87410

DISTRICT IV
1220 S. St. Francis Dr., Santa Fe, NM 87505

State of New Mexico
Energy, Minerals and Natural Resources Department

OIL CONSERVATION DIVISION
1220 South St. Francis Dr.
Santa Fe, New Mexico 87505

Form C-102
Revised July 16, 2010

Submit one copy to appropriate
District Office

WELL LOCATION AND ACREAGE DEDICATION PLAT

☐ AMENDED REPORT

API Number 30-025-40021	Pool Code 33230	Pool Name House; Blinbry
Property Code 303232	Property Name VICEROY	Well Number 3
OGRID No. 813	Operator Name APACHE CORPORATION	Elevation 3567'

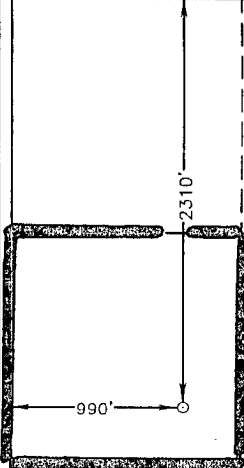
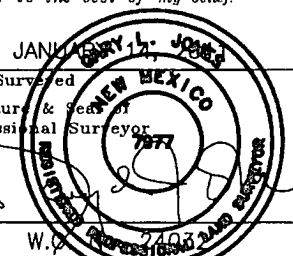
Surface Location

UL or lot No. E	Section 13	Township 20 S	Range 38 E	Lot Idn	Feet from the 2310	North/South line NORTH	Feet from the 990	East/West line WEST	County LEA
---------------------------	----------------------	-------------------------	----------------------	---------	------------------------------	----------------------------------	-----------------------------	-------------------------------	----------------------

Bottom Hole Location If Different From Surface

UL or lot No.	Section	Township	Range	Lot Idn	Feet from the	North/South line	Feet from the	East/West line	County
Dedicated Acres 40	Joint or Infill	Consolidation Code	Order No.						

NO ALLOWABLE WILL BE ASSIGNED TO THIS COMPLETION UNTIL ALL INTERESTS HAVE BEEN CONSOLIDATED
OR A NON-STANDARD UNIT HAS BEEN APPROVED BY THE DIVISION

	<p>SURFACE LOCATION Lat - N 32°34'26.594" Long - W 103°06'27.015" NMSPC - N 574746.496 E 918955.540 (NAD-83)</p> <p>SURFACE LOCATION Lat - N 32°34'26.18" Long - W 103°06'25.30" NMSPC - N 574687.641 E 877773.162 (NAD-27)</p>	<p>OPERATOR CERTIFICATION I hereby certify that the information contained herein is true and complete to the best of my knowledge and belief, and that this organization either owns a working interest or unleased mineral interest in the land including the proposed bottom hole location or has a right to drill this well at this location pursuant to a contract with an owner of such a mineral or working interest, or to a voluntary pooling agreement or a compulsory pooling order heretofore entered by the division.</p> <p><u>Sorina L. Flores</u> 1/19/11 Signature Date</p> <p><u>Sorina L. Flores</u> Printed Name</p> <p><u>Sorina.L.Flores@apachecorp.com</u> Email Address</p>
		<p>SURVEYOR CERTIFICATION I hereby certify that the well location shown on this plat was plotted from field notes of actual surveys made by me or under my supervision, and that the same is true and correct to the best of my belief.</p> <p></p> <p>Date Surveyed Signature & Seal of Professional Surveyor Certificate No. Gary L. Jones 7977 BASIN SURVEYS 24032</p>

DISTRICT I
1625 N. French Dr., Hobbs, NM 88240

DISTRICT II
1301 W. Grand Avenue, Artesia, NM 88210

DISTRICT III
1000 Rio Brazos Rd., Aztec, NM 87410

DISTRICT IV
1220 S. St. Francis Dr., Santa Fe, NM 87505

State of New Mexico
Energy, Minerals and Natural Resources Department

OIL CONSERVATION DIVISION
1220 South St. Francis Dr.
Santa Fe, New Mexico 87505

Form C-102
Revised July 16, 2010

Submit one copy to appropriate
District Office

WELL LOCATION AND ACREAGE DEDICATION PLAT

☐ AMENDED REPORT

API Number 30-025-40021	Pool Code 78760	Pool Name House; Tubb
Property Code 303232	Property Name VICEROY	Well Number 3
OGRID No. 813	Operator Name APACHE CORPORATION	Elevation 3567'

Surface Location

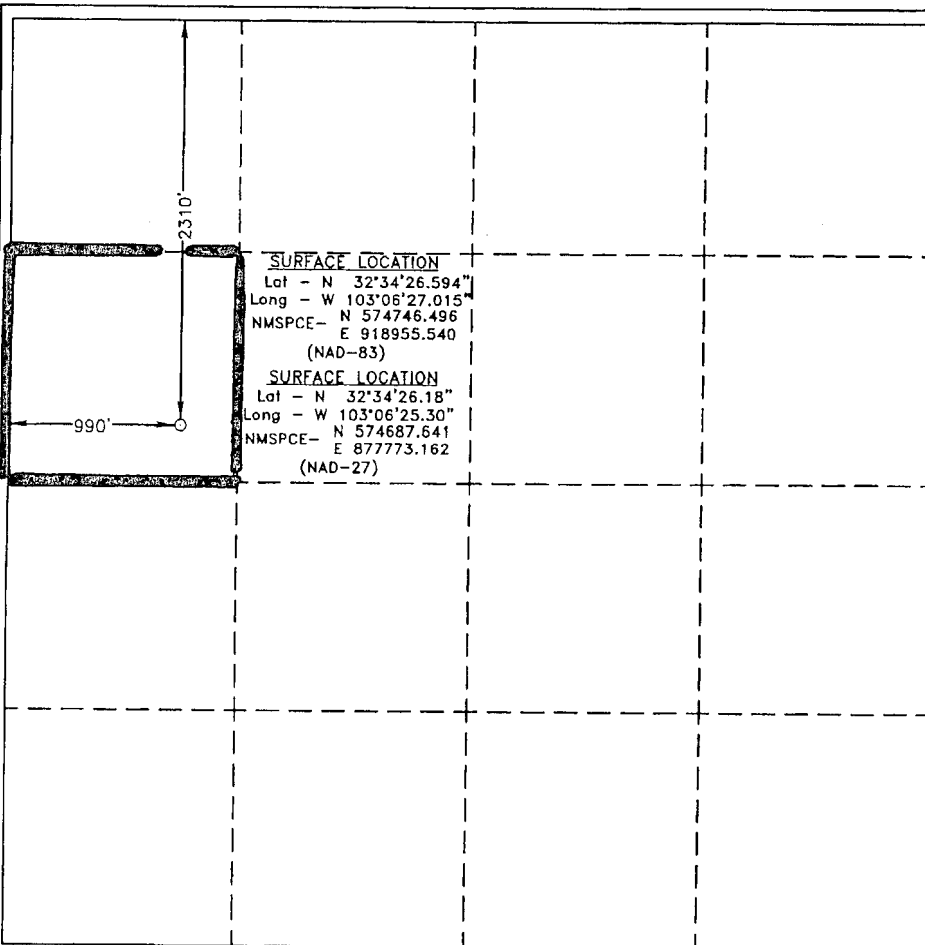
UL or lot No. E	Section 13	Township 20 S	Range 38 E	Lot Idn	Feet from the 2310	North/South line NORTH	Feet from the 990	East/West line WEST	County LEA
---------------------------	----------------------	-------------------------	----------------------	---------	------------------------------	----------------------------------	-----------------------------	-------------------------------	----------------------

Bottom Hole Location If Different From Surface

UL or lot No.	Section	Township	Range	Lot Idn	Feet from the	North/South line	Feet from the	East/West line	County
---------------	---------	----------	-------	---------	---------------	------------------	---------------	----------------	--------

Dedicated Acres 40	Joint or Infill	Consolidation Code	Order No.
------------------------------	-----------------	--------------------	-----------

NO ALLOWABLE WILL BE ASSIGNED TO THIS COMPLETION UNTIL ALL INTERESTS HAVE BEEN CONSOLIDATED
OR A NON-STANDARD UNIT HAS BEEN APPROVED BY THE DIVISION



OPERATOR CERTIFICATION

I hereby certify that the information contained herein is true and complete to the best of my knowledge and belief, and that this organization either owns a working interest or unleased mineral interest in the land including the proposed bottom hole location or has a right to drill this well at this location pursuant to a contract with an owner of such a mineral or working interest, or to a voluntary pooling agreement or a compulsory pooling order heretofore entered by the division.

Sorinah L. Flores 1/19/11
Signature Date

Sorinah L. Flores
Printed Name

Sorinah.Flores@apachecorp.com
Email Address

SURVEYOR CERTIFICATION

I hereby certify that the well location shown on this plat was plotted from field notes of actual surveys made by me or under my supervision and that the same is true and correct to the best of my belief.

JAN 19 2011
Date Surveyed

GARY L. JONES
Signature & Seal of Professional Surveyor

W. J. JONES
W. J. JONES

Certificate No. **Gary L. Jones 7977**

BASIN SURVEYS 24032

DISTRICT I
1025 N. French Dr., Hobbs, NM 88240

DISTRICT II
1301 W. Grand Avenue, Artesia, NM 88210

DISTRICT III
1000 Rio Brazos Rd., Aztec, NM 87410

DISTRICT IV
1220 S. St. Francis Dr., Santa Fe, NM 87505

State of New Mexico
Energy, Minerals and Natural Resources Department

Form C-102
Revised July 18, 2010

Submit one copy to appropriate
District Office

OIL CONSERVATION DIVISION
1220 South St. Francis Dr.
Santa Fe, New Mexico 87505

WELL LOCATION AND ACREAGE DEDICATION PLAT

☐ AMENDED REPORT

API Number 30-025-40021	Pool Code 33250	Pool Name House; Drinkard
Property Code 303232	Property Name VICEROY	Well Number 3
OGRID No. 873	Operator Name APACHE CORPORATION	Elevation 3567'

Surface Location

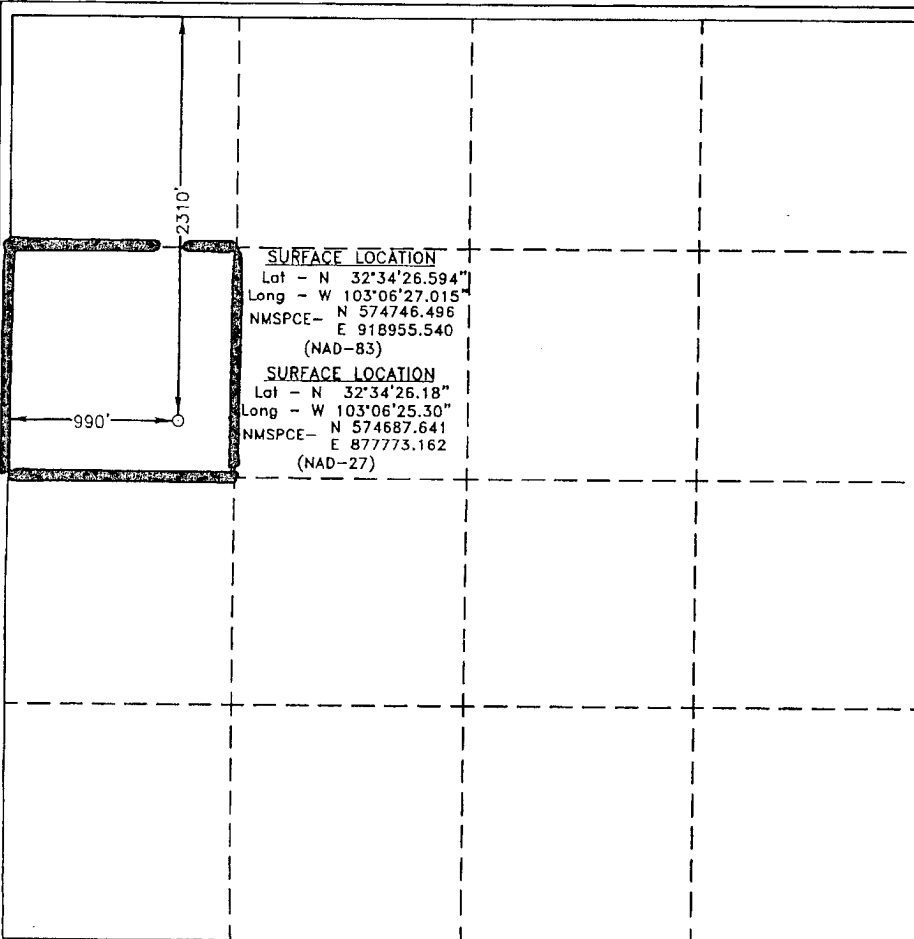
UL or lot No.	Section	Township	Range	Lot Idn	Feet from the	North/South line	Feet from the	East/West line	County
E	13	20 S	38 E		2310	NORTH	990	WEST	LEA

Bottom Hole Location If Different From Surface

UL or lot No.	Section	Township	Range	Lot Idn	Feet from the	North/South line	Feet from the	East/West line	County

Dedicated Acres 40	Joint or Infill	Consolidation Code	Order No.
------------------------------	-----------------	--------------------	-----------

NO ALLOWABLE WILL BE ASSIGNED TO THIS COMPLETION UNTIL ALL INTERESTS HAVE BEEN CONSOLIDATED
OR A NON-STANDARD UNIT HAS BEEN APPROVED BY THE DIVISION



OPERATOR CERTIFICATION

I hereby certify that the information contained herein is true and complete to the best of my knowledge and belief, and that this organization either owns a working interest or unleased mineral interest in the land including the proposed bottom hole location or has a right to drill this well at this location pursuant to a contract with an owner of such a mineral or working interest, or to a voluntary pooling agreement or a compulsory pooling order heretofore entered by the division.

Sorina L. Flores 1/19/11
Signature Date

Sorina L. Flores
Printed Name

Sorina.L.Flores@apachecorp.com
Email Address

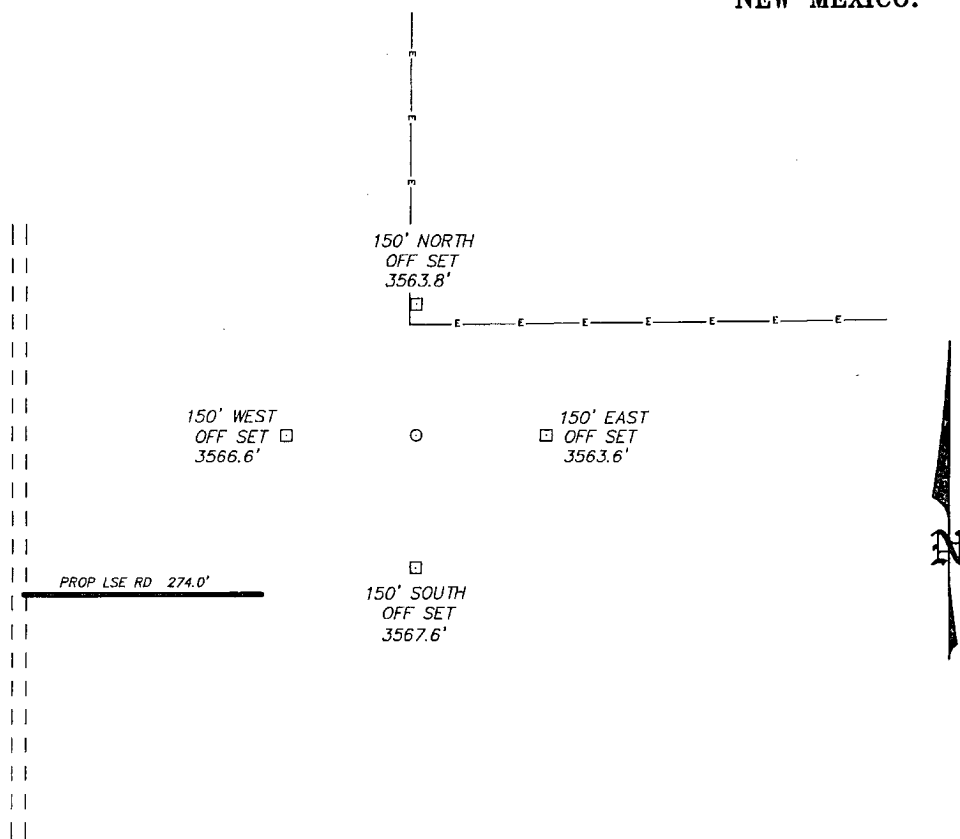
SURVEYOR CERTIFICATION

I hereby certify that the well location shown on this plat was plotted from field notes of actual surveys made by me or under my supervision, and that the same is true and correct to the best of my belief.

JANUARY 17, 2011
Date Surveyed
NEW MEXICO
 Signature & Seal of Professional Surveyor
7977
W. L. Jones
 Certificate No. Gary L. Jones 7977

BASIN SURVEYS 24032

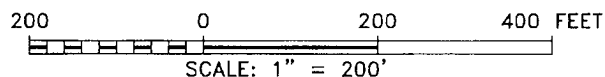
SECTION 13, TOWNSHIP 20 SOUTH, RANGE 38 EAST, N.M.P.M.,
LEA COUNTY, NEW MEXICO.



APACHE CORPORATION
VICEROY #3
ELEV. - 3567'

Lat - N 32°34'26.594"
Long - W 103°06'27.015"
NMSPCE- N 574746.496
E 918955.540
(NAD-83)

Lat - N 32°34'26.18"
Long - W 103°06'25.30"
NMSPCE- N 574687.641
E 877773.162
(NAD-27)



Directions to Location:

FROM THE JUNCTION OF THE EUNICE HWY AND McCASLAND, GO EAST ON McCASLAND FOR 1.1 MILES TO LEASE ROAD, ON LEASE ROAD GO NORTH 0.4 MILES TO PROPOSED LEASE ROAD.

APACHE CORPORATION

REF: VICEROY #3 / WELL PAD TOPO

THE VICEROY #3 LOCATED 2310'

FROM THE NORTH LINE AND 990' FROM THE WEST LINE OF
SECTION 13, TOWNSHIP 20 SOUTH, RANGE 38 EAST,

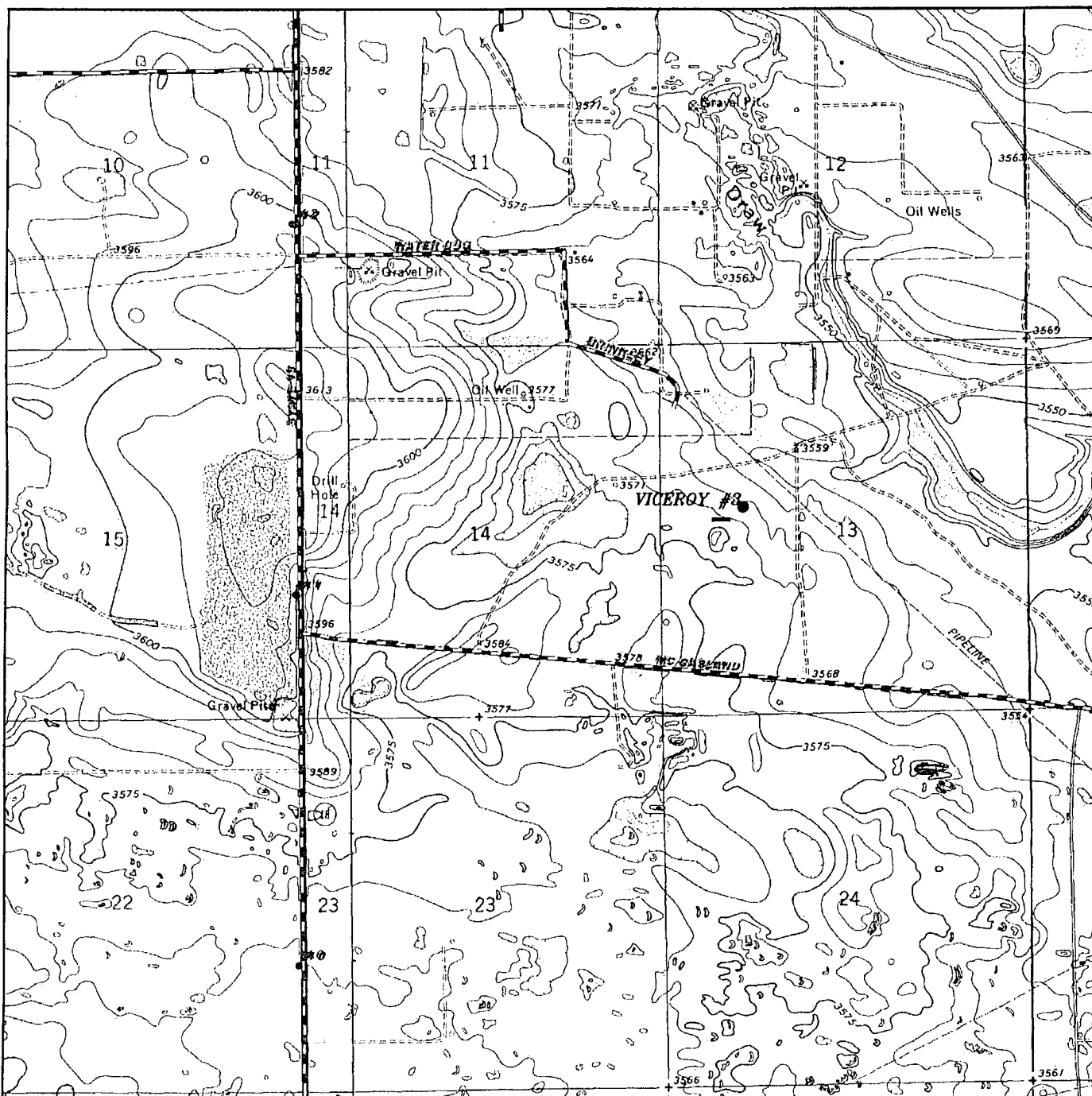
N.M.P.M., LEA COUNTY, NEW MEXICO.

BASIN SURVEYS P.O. BOX 1786-HOBBS, NEW MEXICO

W.O. Number: 24032 Drawn By: J. SMALL

Date: 01-18-2011 Disk: JMS 24032

Survey Date: 01-14-2011 Sheet 1 of 1 Sheets



VICEROY #3

Located 2310' FNL and 990' FWL

Section 13, Township 20 South, Range 38 East,
N.M.P.M., Lea County, New Mexico.



focused on excellence
in the oilfield

P.O. Box 1786
1120 N. West County Rd.
Hobbs, New Mexico 88241
(575) 393-7316 - Office
(575) 392-2206 - Fax
basinsurveys.com

W.O. Number: JMS 24032

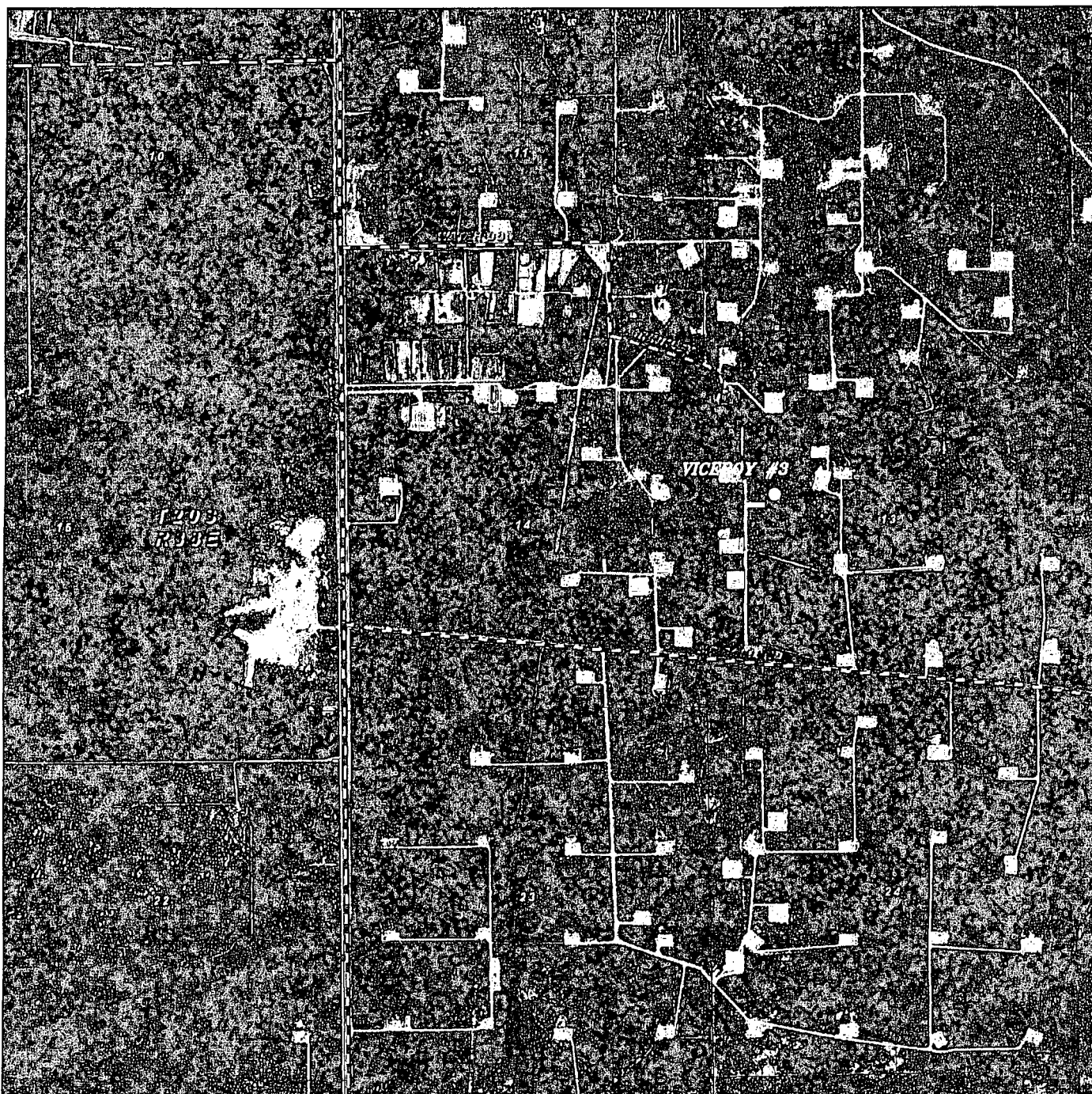
Survey Date: 01-14-2011

Scale: 1" = 2000'

Date: 01-18-2011

APACHE
CORPORATION

APACHE
CORPORATION



VICEROY #3
Located 2310' FNL and 990' FWL
Section 13, Township 20 South, Range 38 East,
N.M.P.M., Lea County, New Mexico.

basin
surveys
focused on excellence
in the oilfield

P.O. Box 1786
1120 N. West County Rd.
Hobbs, New Mexico 88241
(575) 393-7316 - Office
(575) 392-2206 - Fax
basinsurveys.com

W.O. Number: JMS 24032

Scale: 1" = 2000'

YELLOW TINT - USA LAND
BLUE TINT - STATE LAND
NATURAL COLOR - FEE LAND

APACHE
CORPORATION