

District I  
1625 N. French Dr., Hobbs, NM 88240

District II  
1301 W. Grand Avenue, Artesia, NM 88210

District III  
1000 Rio Brazos Road, Aztec, NM 87410

District IV  
1220 S. St. Francis Dr., Santa Fe, NM 87505

**RECEIVED** State of New Mexico  
Energy Minerals and Natural Resources

Form C-101  
June 16, 2008

FEB 07 2011

HOBBSDUCD

Oil Conservation Division  
1220 South St. Francis Dr.  
Santa Fe, NM 87505

Submit to appropriate District Office

☐ AMENDED REPORT

**APPLICATION FOR PERMIT TO DRILL, RE-ENTER, DEEPEN, PLUGBACK, OR ADD A ZONE**

<sup>1</sup> Operator Name and Address <b>CHI Operating, Inc.</b>		<sup>4</sup> OGRID Number <b>4378</b>
<sup>3</sup> Property Code <b>38471</b>		<sup>5</sup> API Number <b>30 - 025 - 07488</b>
<sup>2</sup> Property Name <b>H.D. McKinley</b>		<sup>6</sup> Well No. <b>6</b>
<sup>9</sup> Proposed Pool 1		<sup>10</sup> Proposed Pool 2

**7 Surface Location**

UL or lot no. <b>G</b>	Section <b>30</b>	Township <b>18S</b>	Range <b>38E</b>	Lot Idn	Feet from the <b>1980'</b>	North/South line <b>South</b>	Feet from the <b>1650'</b>	East/West line <b>East</b>	County <b>Lea</b>
---------------------------	----------------------	------------------------	---------------------	---------	-------------------------------	----------------------------------	-------------------------------	-------------------------------	----------------------

**8 Proposed Bottom Hole Location If Different From Surface**

UL or lot no.	Section	Township	Range	Lot Idn	Feet from the	North/South line	Feet from the	East/West line	County
---------------	---------	----------	-------	---------	---------------	------------------	---------------	----------------	--------

**Additional Well Information**

<sup>11</sup> Work Type Code <b>RE-Entry</b>	<sup>12</sup> Well Type Code <b>G</b>	<sup>13</sup> Cable/Rotary <b>R</b>	<sup>14</sup> Lease Type Code <b>R P</b>	<sup>15</sup> Ground Level Elevation <b>3652'</b>
<sup>16</sup> Multiple <b>N</b>	<sup>17</sup> Proposed Depth	<sup>18</sup> Formation	<sup>19</sup> Contractor	<sup>20</sup> Spud Date <b>ASAP</b>

**21 Proposed Casing and Cement Program**

Hole Size	Casing Size	Casing weight/foot	Setting Depth	Sacks of Cement	Estimated TOC
	<b>8 5/8"</b>	<b>32#</b>	<b>1974'</b>		
	<b>5 1/2"</b>	<b>17#</b>	<b>3160'</b>		

<sup>22</sup> Describe the proposed program. If this application is to DEEPEN or PLUG BACK, give the data on the present productive zone and proposed new productive zone. Describe the blowout prevention program, if any. Use additional sheets if necessary.

CHI Operating plans to re-enter the well and perf the  
Bygas zone  
Attached is the current wellbore and re-entry  
procedure.

**Permit Expires 2 Years From Approval**

**Date Unless Drilling Underway**

**Re-Entry**

<sup>23</sup> I hereby certify that the information given above is true and complete to the best of my knowledge and belief.

Signature:

**Pam Corbett**

Printed name:

**Pam Corbett**

Title:

**Regulatory Clerk**

E-mail Address:

**pamc@chienergyinc.com**

Date:

**1/12/11**

Phone:

**432 685-5001**

OIL CONSERVATION DIVISION

Approved by:

**[Signature]**

Title:

**PETROLEUM ENGINEER**

Approval Date:

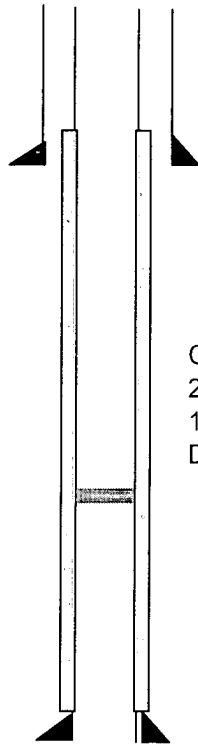
**FEB 10 2011**

Expiration Date:

Conditions of Approval Attached ☐

## HD McKinley 6 Re-Entry API 30-025-07488

Sec. 30-T18S-R38E  
1980' FSL & 1650' FEL



GR 3653'

8 5/8" 32# SS @ 1474'  
cmt at surface

CIBP @ 3100' w/5 sx cmt plug 3100'-3062'  
20 sx cmt plug 1542'-1374'  
10 sx cmt surface plug  
Dry hole marker

5 1/2" 17# SS @ 3160'  
cmt w/200sx

PBTD 3062'

### Re-Entry Procedure

MIRU unit, pipe racks and tally tubing. Clean pits and boxes.

NU BOP (7 1/16" - 3000#)

RU Reverse Unit with power swivel and steel workover pits. PU bit and DC's on 2 7/8 tubing.

Drill out plugs to approximately 3000'. Circulate hole.

RU cased hole logs to run CNL and radial bond log from PBTD to surface.

Perf Byers Gas interval as dictated by CNL w/casing guns @ 2760' - 2880'.

Acidize w/4000 gals 7 1/2% NeFe HCL.

Flow test and evaluate.

## DISTRICT I

1635 N. FRENCH DR., HOBBS, NM 88400

## DISTRICT II

1301 W. GRAND AVENUE, ARTESIA, NM 88210

## DISTRICT III

1000 Rio Brazos Rd., Aztec, NM 87410

## DISTRICT IV

1220 S. ST. FRANCIS DR., SANTA FE, NM 87505

State of New Mexico  
Energy, Minerals and Natural Resources DepartmentOIL CONSERVATION DIVISION  
1220 SOUTH ST. FRANCIS DR.  
Santa Fe, New Mexico 87505

Form C-102

Revised October 12, 2005

Submit to Appropriate District Office

State Lease - 4 Copies

For Lease - 3 Copies

## WELL LOCATION AND ACREAGE DEDICATION PLAT

☐ AMENDED REPORT

API Number <b>30-025-07488</b>	Pool Code <b>7220</b>	Pool Name <b>Bowers Seven Rivers</b>
Property Code <b>38471</b>	Property Name <b>H.D. MCKINLEY</b>	Well Number <b>6</b>
OGRID No. <b>04378</b>	Operator Name <b>CHI OPERATING</b>	Elevation <b>3652'</b>

## Surface Location

UL or lot No.	Section	Township	Range	Lot Idn	Feet from the	North/South line	Feet from the	East/West line	County
G	30	18-S	38-E		1980	NORTH	1650	EAST	LEA

## Bottom Hole Location If Different From Surface

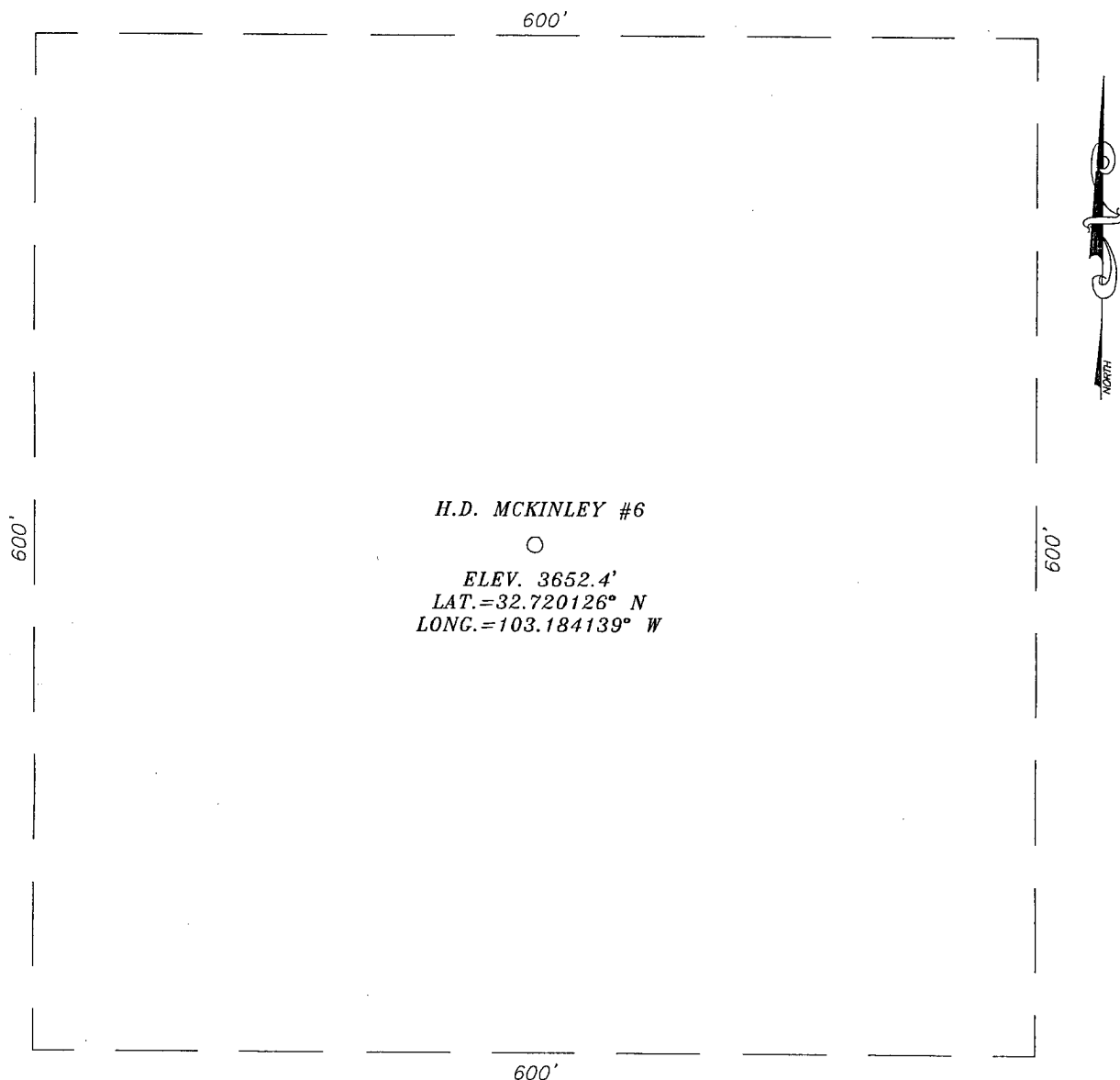
UL or lot No.	Section	Township	Range	Lot Idn	Feet from the	North/South line	Feet from the	East/West line	County

Dedicated Acres <b>40</b>	Joint or Infill	Consolidation Code	Order No.
------------------------------	-----------------	--------------------	-----------

NO ALLOWABLE WILL BE ASSIGNED TO THIS COMPLETION UNTIL ALL INTERESTS HAVE BEEN CONSOLIDATED  
OR A NON-STANDARD UNIT HAS BEEN APPROVED BY THE DIVISION

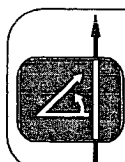
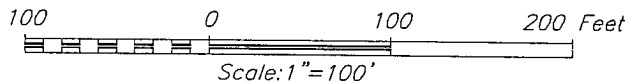
	<b>OPERATOR CERTIFICATION</b> I hereby certify that the information herein is true and complete to the best of my knowledge and belief, and that this organization either owns a working interest or unleased mineral interest in the land including the proposed bottom hole location or has a right to drill this well at this location pursuant to a contract with an owner of such mineral or working interest, or to a voluntary pooling agreement or a compulsory pooling order heretofore entered by the division. Signature: <u>Pam Corbett</u> Date: <u>1/24/11</u> Printed Name: <u>Pam Corbett</u>
	<b>SURVEYOR CERTIFICATION</b> I hereby certify that the well location shown on this plat was plotted from field notes of actual surveys made by me or under my supervision, and that the same is true and correct to the best of my belief. Date Surveyed: <u>JANUARY 19, 2011</u> LA Signature: <u>[Signature]</u> Professional Surveyor: <u>[Signature]</u> No. <u>1110126</u> Certified Professional
	GEODETIC COORDINATES NAD 27 NME Y=627609.2 N X=853441.7 E LAT.=32.720126° N LONG.=103.184139° W
	Date Surveyed: <u>JANUARY 19, 2011</u> LA Signature: <u>[Signature]</u> Professional Surveyor: <u>[Signature]</u> No. <u>1110126</u> Certified Professional

SECTION 30, TOWNSHIP 18 SOUTH, RANGE 38 EAST, N.M.P.M.,  
LEA COUNTY, NEW MEXICO



DIRECTIONS TO LOCATION

FROM THE INTERSECTION OF BENDER BLVD. & CARR ROAD, GO SOUTH ON CARR ROAD APPROX. 0.35 MILES. THIS WELL IS APPROX. 300 FEET EAST.



PROVIDING SURVEYING SERVICES  
SINCE 1946  
JOHN WEST SURVEYING COMPANY  
412 N. DAL PASO  
HOBBS, N.M. 88240  
(505) 393-3117

# CHI OPERATING

H.D. MCKINLEY #6 WELL  
LOCATED 1980 FEET FROM THE NORTH LINE  
AND 1650 FEET FROM THE EAST LINE OF SECTION 30,  
TOWNSHIP 18 SOUTH, RANGE 38 EAST, N.M.P.M.,  
LEA COUNTY, NEW MEXICO.

Survey Date: 1/19/11	Sheet 1 of 1 Sheets
W.O. Number: 11.11.0126	Dr By: LA
Date: 1/21/11	11110126
	Scale: 1"=100'

## VICINITY MAP



SCALE: 1" = 2 MILES

SEC. 30 TWP. 18-S RGE. 38-E

SURVEY \_\_\_\_\_ N.M.P.M.

COUNTY LEA STATE NEW MEXICO

DESCRIPTION 1980' FNL & 1650' FEL

ELEVATION 3652'

OPERATOR            CHI OPERATING

LEASE H.D. MCKINLEY

