

DISTRICT I
1625 N. FRENCH DR., HOBBS, NM 88240

RECEIVED

State of New Mexico
Energy, Minerals and Natural Resources Department

DISTRICT II
1301 W. GRAND AVENUE, ARTESIA, NM 88210

DISTRICT III
1000 Rio Brazos Rd., Aztec, NM 87410

OIL CONSERVATION DIVISION
1220 SOUTH ST. FRANCIS DR.
Santa Fe, New Mexico 87505

Form C-102
Revised October 12, 2005
Submit to Appropriate District Office
State Lease - 4 Copies
Fee Lease - 3 Copies

DISTRICT IV
1220 S. ST. FRANCIS DR., SANTA FE, NM 87505

WELL LOCATION AND ACREAGE DEDICATION PLAT

☐ AMENDED REPORT

API Number 30-025-39635	Pool Code 96764	Pool Name MONUMENT; ABO, SOUTHEAST
Property Code 306601	Property Name HANSEN STATE	Well Number 14
OGRID No. 873	Operator Name APACHE CORPORATION	Elevation 3541'

Surface Location

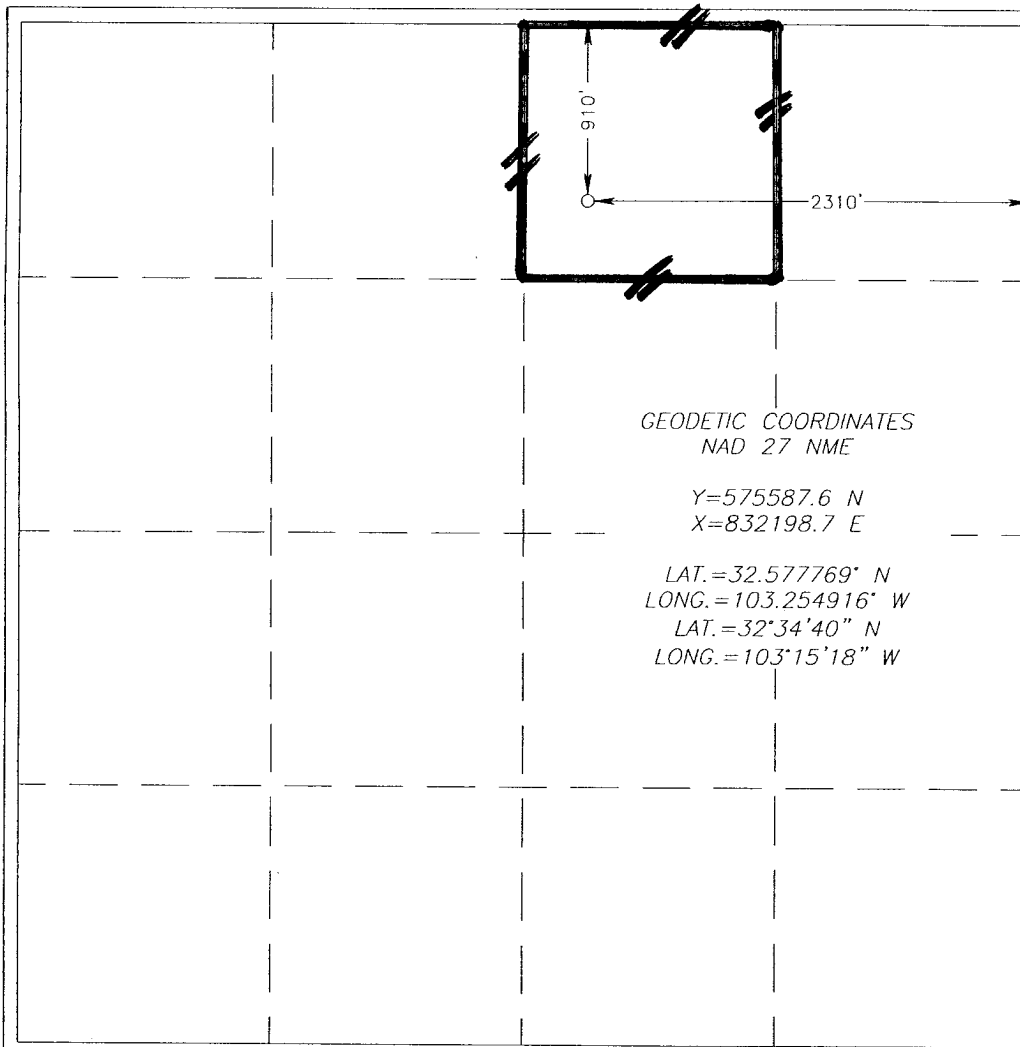
UL or lot No. B	Section 16	Township 20-S	Range 37-E	Lot Idn	Feet from the 910	North/South line NORTH	Feet from the 2310	East/West line EAST	County LEA
---------------------------	----------------------	-------------------------	----------------------	---------	-----------------------------	----------------------------------	------------------------------	-------------------------------	----------------------

Bottom Hole Location If Different From Surface

UL or lot No.	Section	Township	Range	Lot Idn	Feet from the	North/South line	Feet from the	East/West line	County
---------------	---------	----------	-------	---------	---------------	------------------	---------------	----------------	--------

Dedicated Acres 40	Joint or Infill	Consolidation Code	Order No.
------------------------------	-----------------	--------------------	-----------

NO ALLOWABLE WILL BE ASSIGNED TO THIS COMPLETION UNTIL ALL INTERESTS HAVE BEEN CONSOLIDATED
OR A NON-STANDARD UNIT HAS BEEN APPROVED BY THE DIVISION



OPERATOR CERTIFICATION

I hereby certify that the information herein is true and complete to the best of my knowledge and belief, and that this organization either owns a working interest or unleased mineral interest in the land including the proposed bottom hole location or has a right to drill this well at this location pursuant to a contract with an owner of such mineral or working interest, or to a voluntary pooling agreement or a compulsory pooling order heretofore entered by the division.

Reesa Holland 1/24/11
Signature Date

REESA HOLLAND
Printed Name

SURVEYOR CERTIFICATION

I hereby certify that the well location shown on this plat was plotted from field notes of actual surveys made by me or under my supervision, and that the same is true and correct to the best of my belief.

AUG 15 2010
Date Surveyed
Signature & Seal of Professional Surveyor
Ronald J. Eidson 3239
8/26/2010
Certificate No. **RONALD EIDSON** 3239