

# RECEIVED

DISTRICT I  
1625 N. FRENCH DR., HOBBS, NM 88240

OCT 14 2010

State of New Mexico  
Energy, Minerals and Natural Resources Department

DISTRICT II  
1301 W. GRAND AVENUE, ARTESIA, NM 88210

HOBBSOCD

OIL CONSERVATION DIVISION

11885 SOUTH ST. FRANCIS DR.  
Santa Fe, New Mexico 87505

DISTRICT III  
1000 RIO BRAZOS RD., AZTEC, NM 87410

Form C-102

Revised October 12, 2005  
Submit to Appropriate District Office  
State Lease - 4 Copies  
Fee Lease - 3 Copies

DISTRICT IV  
11885 S. ST. FRANCIS DR., SANTA FE, NM 87505

## WELL LOCATION AND ACREAGE DEDICATION PLAT

☐ AMENDED REPORT

API Number <b>30-025-39829</b>	Pool Code <b>50350</b>	Pool Name <b>PENROSE SKELLY; GRAYBURG</b>
Property Code <b>23103</b>	Property Name <b>ARGO</b>	Well Number <b>15</b>
OGRID No. <b>873</b>	Operator Name <b>APACHE CORPORATION</b>	Elevation <b>3426'</b>

### Surface Location

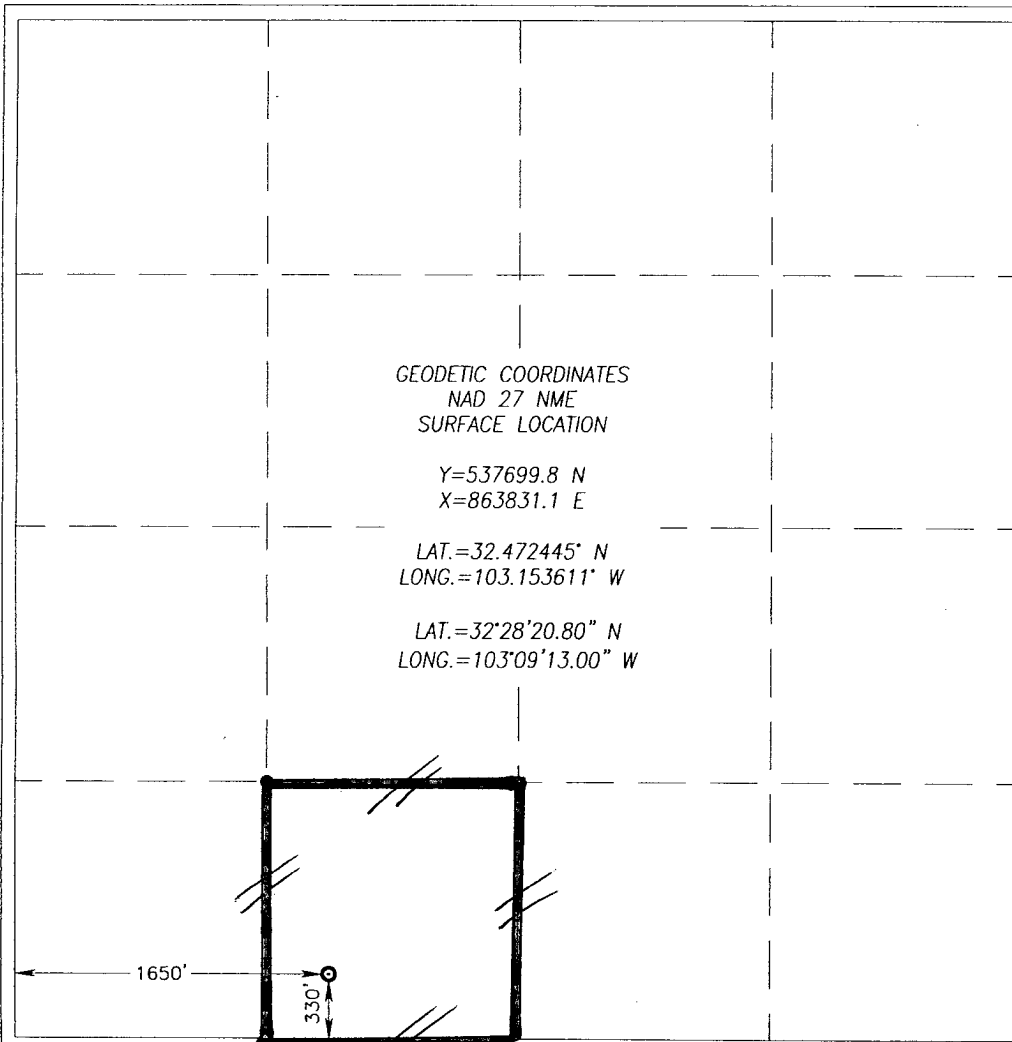
UL or lot No.	Section	Township	Range	Lot Idn	Feet from the	North/South line	Feet from the	East/West line	County
N	15	21-S	37-E		330	SOUTH	1650	WEST	LEA

### Bottom Hole Location If Different From Surface

UL or lot No.	Section	Township	Range	Lot Idn	Feet from the	North/South line	Feet from the	East/West line	County

Dedicated Acres <b>40</b>	Joint or Infill	Consolidation Code	Order No.
------------------------------	-----------------	--------------------	-----------

NO ALLOWABLE WILL BE ASSIGNED TO THIS COMPLETION UNTIL ALL INTERESTS HAVE BEEN CONSOLIDATED  
OR A NON-STANDARD UNIT HAS BEEN APPROVED BY THE DIVISION



### OPERATOR CERTIFICATION

I hereby certify that the information herein is true and complete to the best of my knowledge and belief, and that this organization either owns a working interest or unleased mineral interest in the land including the proposed bottom hole location or has a right to drill this well at this location pursuant to a contract with an owner of such mineral or working interest, or to a voluntary pooling agreement or a compulsory pooling order heretofore entered by the division.

**Reesa Holland** 10/12/10  
Signature Date  
**REESEA HOLLAND**  
Printed Name

### SURVEYOR CERTIFICATION

I hereby certify that the well location shown on this plat was plotted from field notes of actual surveys made by me or under my supervision, and that the same is true and correct to the best of my belief.

**RONALD J. EIDSON**  
JUNE 17 2010  
Date Surveyed  
Signature & Seal of 39 Professional Surveyor  
**Ronald J. Eidson** 06/23/2010  
10:14:0856

Certificate No. GARY G. EIDSON 12641  
RONALD J. EIDSON 3239