

DISTRICT I
1625 N. FRENCH DR., HOBBS, NM 88240

DISTRICT II
1301 W. GRAND AVENUE, ARTESIA, NM 88210

DISTRICT III
1000 Rio Brazos Rd., Aztec, NM 87410

DISTRICT IV
1220 S. ST. FRANCIS DR., SANTA FE, NM 87505

State of New Mexico
Energy, Minerals and Natural Resources Department

RECEIVED
NOV 23 2010
HOBBSOCD

Form C-102
Revised October 12, 2005
Submit to Appropriate District Office
State Lease - 4 Copies
Fee Lease - 3 Copies

OIL CONSERVATION DIVISION
1220 SOUTH ST. FRANCIS DR.
Santa Fe, New Mexico 87505

WELL LOCATION AND ACREAGE DEDICATION PLAT

☐ AMENDED REPORT

API Number 30-025-39848		Pool Code 22900	Pool Name EUNICE; BLINEBRY-TUBB-DRKD, NORTH
Property Code 35023	Property Name EAST BLINEBRY DRINKARD UNIT		Well Number 122
OGRID No. 873	Operator Name APACHE CORPORATION		Elevation 3474'

Surface Location

UL or lot No.	Section	Township	Range	Lot Idn	Feet from the	North/South line	Feet from the	East/West line	County
M	1	21-S	37-E		225	SOUTH	330	WEST	LEA

Bottom Hole Location If Different From Surface

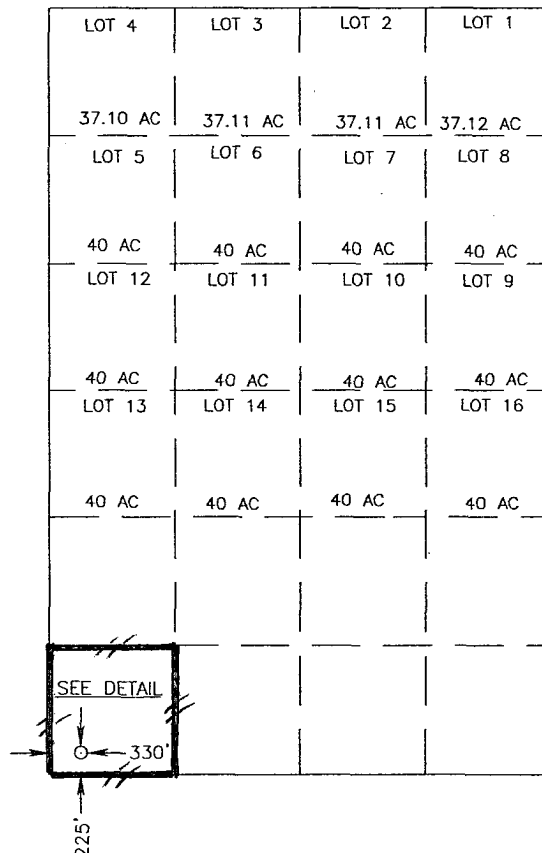
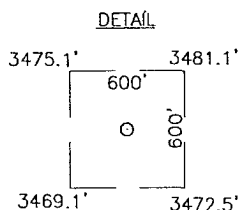
UL or lot No.	Section	Township	Range	Lot Idn	Feet from the	North/South line	Feet from the	East/West line	County
Dedicated Acres 40	Joint or Infill	Consolidation Code	Order No.						

NO ALLOWABLE WILL BE ASSIGNED TO THIS COMPLETION UNTIL ALL INTERESTS HAVE BEEN CONSOLIDATED
OR A NON-STANDARD UNIT HAS BEEN APPROVED BY THE DIVISION

GEODETIC COORDINATES
NAD 27 NME

Y=548180.4 N
X=872938.3 E

LAT.=32.501243° N
LONG.=103.123697° W
LAT. = 32°30'04.47" N
LONG. = 103°07'25.31" W



SCALE: 1" = 2000'

OPERATOR CERTIFICATION

I hereby certify that the information herein is true and complete to the best of my knowledge and belief, and that this organization either owns a working interest or unleased mineral interest in the land including the proposed bottom hole location or has a right to drill this well at this location pursuant to a contract with an owner of such mineral or working interest, or to a voluntary pooling agreement or a compulsory pooling order heretofore entered by the division.

Reesa Holland 11/1/10
Signature Date
REESEA HOLLAND
Printed Name

SURVEYOR CERTIFICATION

I hereby certify that the well location shown on this plat was plotted from field notes of actual surveys made by me or under my supervision, and that the same is true and correct to the best of my belief.

GARY G. EIDSON
FEBRUARY 18, 2010
Date Surveyed
Signature & Seal of **GARY G. EIDSON**
Professional Surveyor
Gary Eidson 2/25/10
10.1440230

Certificate No. **GARY EIDSON** 12641
RONALD J. EIDSON 3239