

DISTRICT I
1625 N. FRENCH DR., HOBBS, NM 88241

State of New Mexico

Energy, Minerals and Natural Resources Department

Form C-102

DISTRICT II
1301 W. GRAND AVENUE, ARTESIA, NM 88210

OIL CONSERVATION DIVISION
1220 SOUTH ST. FRANCIS DR.
Santa Fe, New Mexico 87505

Revised October 12, 2005
Submit to Appropriate District Office
State Lease - 4 Copies
Fee Lease - 3 Copies

DISTRICT III
1000 Rio Brazos Rd., Aztec, NM 87412

DISTRICT IV
1220 S. ST. FRANCIS DR., SANTA FE, NM 87505

WELL LOCATION AND ACREAGE DEDICATION PLAT

☐ AMENDED REPORT

API Number 30-025-39840	Pool Code 24580	Pool Name Flying M Abo
Property Code 38223	Property Name CROSSROADS STATE 22	Well Number 3H
OGRID No. 14187	Operator Name MARSHALL & WINSTON, INC.	Elevation 4371'

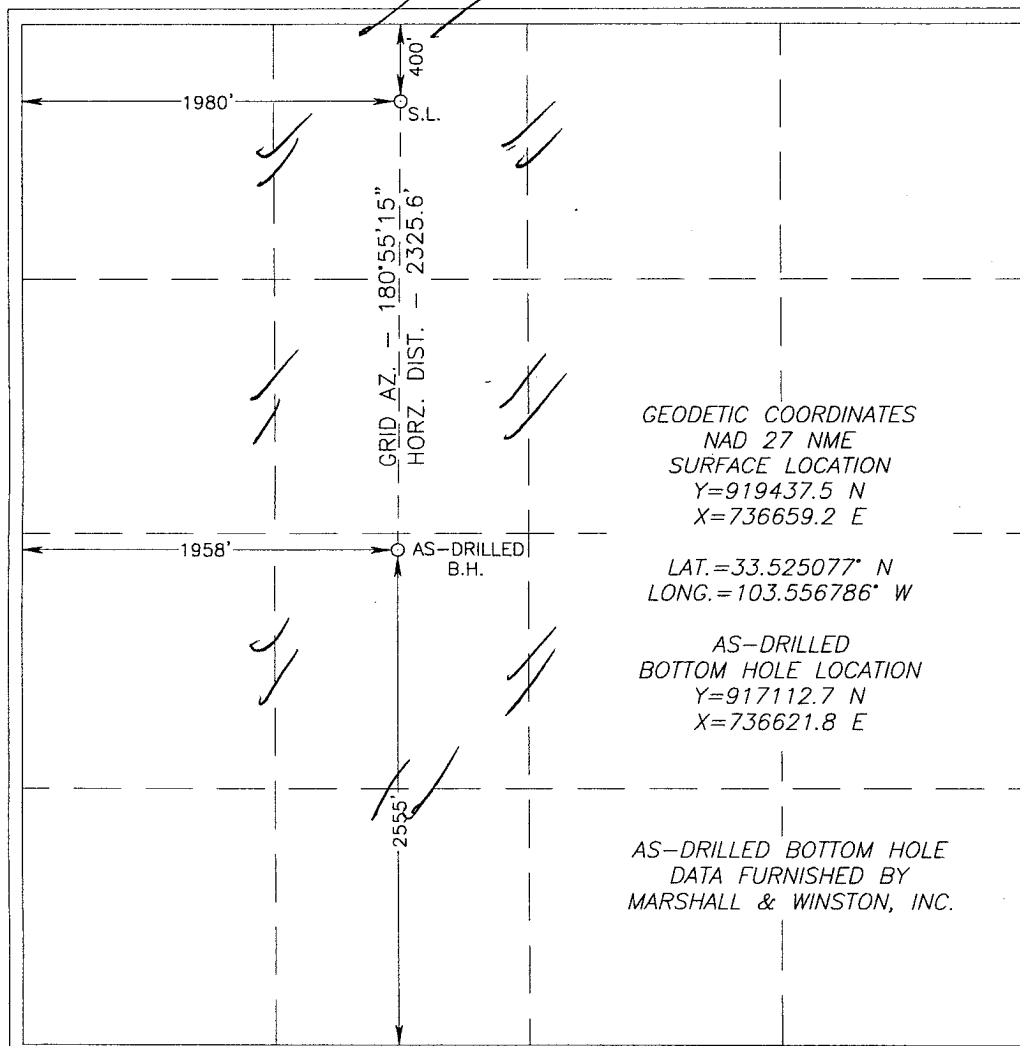
Surface Location

UL or lot No.	Section	Township	Range	Lot Idn	Feet from the	North/South line	Feet from the	East/West line	County
C	22	9-S	33-E		400	NORTH	1980	WEST	LEA

Bottom Hole Location If Different From Surface

UL or lot No.	Section	Township	Range	Lot Idn	Feet from the	North/South line	Feet from the	East/West line	County
K	22	9-S	33-E		2729 2555	N SOUTH	1984 1958	WEST	LEA
Dedicated Acres 120	Joint or Infill	Consolidation Code	Order No.						

NO ALLOWABLE WILL BE ASSIGNED TO THIS COMPLETION UNTIL ALL INTERESTS HAVE BEEN CONSOLIDATED
OR A NON-STANDARD UNIT HAS BEEN APPROVED BY THE DIVISION



OPERATOR CERTIFICATION

I hereby certify that the information herein is true and complete to the best of my knowledge and belief, and that this organization either owns a working interest or unleased mineral interest in the land including the proposed bottom hole location or has a right to drill this well at this location pursuant to a contract with an owner of such mineral or working interest, or to a voluntary pooling agreement or a compulsory pooling order heretofore entered by the division.

Vernon Dyer 2-22-11
Signature Date
VERNON D. DYER
Printed Name

SURVEYOR CERTIFICATION

I hereby certify that the well location shown on this plat was plotted from field notes of actual surveys made by me or under my supervision, and that the same is true and correct to the best of my belief.

JULY 14, 2010

Date Surveyed
Signature & Seal of Professional Surveyor
NEW MEXICO
RONALD EIDSON
11.13.0336
Certificate No. GARY EIDSON 12641
RONALD EIDSON 3239