

DISTRICT I
1625 N. FRENCH DR., HOBBBS, NM 88240

DISTRICT II
1301 W. GRAND AVENUE, ARTESIA, NM 88210

DISTRICT III
1000 Rio Brazos Rd., Aztec, NM 87410

DISTRICT IV
1220 S. ST. FRANCIS DR., SANTA FE, NM 87505

State of New Mexico

Energy, Minerals and Natural Resources Department

RECEIVED

OIL CONSERVATION DIVISION
MAR 14 2011 1220 SOUTH ST. FRANCIS DR.
Santa Fe, New Mexico 87505

Form C-102

Revised October 12, 2005

Submit to Appropriate District Office

State Lease - 4 Copies

Fee Lease - 3 Copies

WELL LOCATION AND ACREAGE DEDICATION PLAT

☐ AMENDED REPORT

API Number 30-025-39390	Pool Code 66660	Pool Name BLUEBRY OIL + GAS (OIL)
Property Code 31036	Property Name HAWK A-5	Well Number 4
OGRID No. 873	Operator Name APACHE CORPORATION	Elevation 3494'

Surface Location

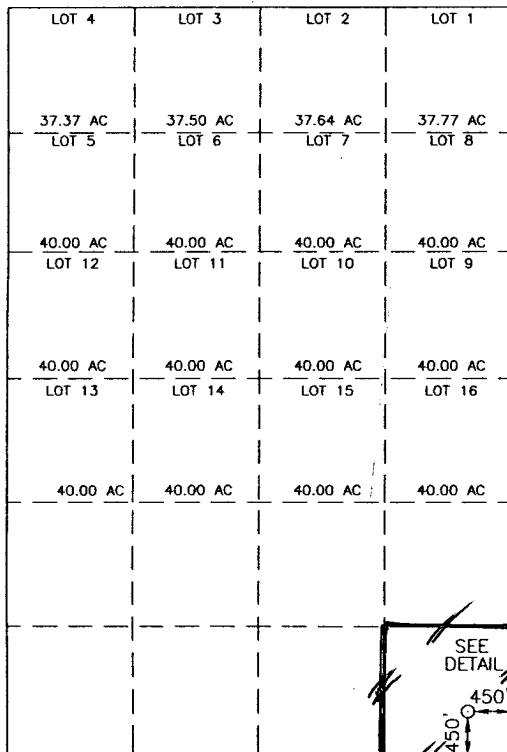
UL or lot No.	Section	Township	Range	Lot Idn	Feet from the	North/South line	Feet from the	East/West line	County
P	5	21-S	37-E		450	SOUTH	450	EAST	LEA

Bottom Hole Location If Different From Surface

UL or lot No.	Section	Township	Range	Lot Idn	Feet from the	North/South line	Feet from the	East/West line	County

Dedicated Acres 40	Joint or Infill	Consolidation Code	Order No. DHC-HOB-0437
------------------------------	-----------------	--------------------	----------------------------------

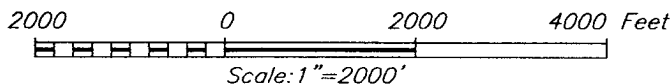
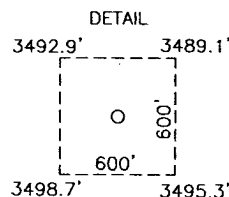
NO ALLOWABLE WILL BE ASSIGNED TO THIS COMPLETION UNTIL ALL INTERESTS HAVE BEEN CONSOLIDATED
OR A NON-STANDARD UNIT HAS BEEN APPROVED BY THE DIVISION



GEODETIC COORDINATES
NAD 27 NME

Y=548204.7 N
X=856325.1 E

LAT.=32°30'06.54" N
LONG.=103°10'39.26" W



OPERATOR CERTIFICATION

I hereby certify that the information herein is true and complete to the best of my knowledge and belief, and that this organization either owns a working interest or unleased mineral interest in the land including the proposed bottom hole location or has a right to drill this well at this location pursuant to a contract with an owner of such mineral or working interest, or to a voluntary pooling agreement or a compulsory pooling order heretofore entered by the division.

Reesa Holland 3/10/11
Signature Date
REESEA HOLLAND
Printed Name

SURVEYOR CERTIFICATION

I hereby certify that the well location shown on this plat was plotted from field notes of actual surveys made by me or under my supervision, and that the same is true and correct to the best of my belief.

JUNE 05, 2006

Date Surveyed _____ MR
Signature & Seal of
Professional Surveyor

Ronald J. Eidson 6/19/06
06.11.0941
NEW MEXICO
REGISTERED PROFESSIONAL

Certificate No. **GARY EIDSON** 12641
RONALD J. EIDSON 3239

DISTRICT I

1625 N. FRENCH DR., HOBBS, NM 88240

RECEIVED

State of New Mexico

Energy, Minerals and Natural Resources Department

Form C-102

Revised October 12, 2005

Submit to Appropriate District Office

State Lease - 4 Copies

Fee Lease - 3 Copies

DISTRICT II

1301 W. GRAND AVENUE, ARTESIA, NM 88210

DISTRICT III

1000 Rio Brazos Rd., Aztec, NM 87410

OIL CONSERVATION DIVISION

1220 SOUTH ST. FRANCIS DR.

Santa Fe, New Mexico 87505

DISTRICT IV

1220 S. ST. FRANCIS DR., SANTA FE, NM 87505

WELL LOCATION AND ACREAGE DEDICATION PLAT

☐ AMENDED REPORT

API Number 30-025-39390		Pool Code 60240	Pool Name TUBB OIL & GAS (OIL)
Property Code 31036	Property Name HAWK A-5		Well Number 4
OGRID No. 873	Operator Name APACHE CORPORATION		Elevation 3494'

Surface Location

UL or lot No.	Section	Township	Range	Lot Idn	Feet from the	North/South line	Feet from the	East/West line	County
P	5	21-S	37-E		450	SOUTH	450	EAST	LEA

Bottom Hole Location If Different From Surface

UL or lot No.	Section	Township	Range	Lot Idn	Feet from the	North/South line	Feet from the	East/West line	County

Dedicated Acres	Joint or Infill	Consolidation Code	Order No.
40			DHC-HOB-0437

NO ALLOWABLE WILL BE ASSIGNED TO THIS COMPLETION UNTIL ALL INTERESTS HAVE BEEN CONSOLIDATED
OR A NON-STANDARD UNIT HAS BEEN APPROVED BY THE DIVISION

LOT 4	LOT 3	LOT 2	LOT 1
37.37 AC LOT 5	37.50 AC LOT 6	37.64 AC LOT 7	37.77 AC LOT 8
40.00 AC LOT 12	40.00 AC LOT 11	40.00 AC LOT 10	40.00 AC LOT 9
40.00 AC LOT 13	40.00 AC LOT 14	40.00 AC LOT 15	40.00 AC LOT 16
40.00 AC	40.00 AC	40.00 AC	40.00 AC

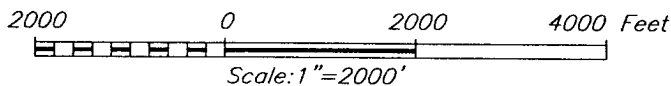
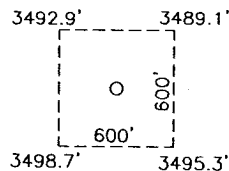
GEODETIC COORDINATES
NAD 27 NME

Y=548204.7 N

X=856325.1 E

LAT.=32°30'06.54" N
LONG.=103°10'39.26" W

DETAIL



OPERATOR CERTIFICATION

I hereby certify that the information herein is true and complete to the best of my knowledge and belief, and that this organization either owns a working interest or unleased mineral interest in the land including the proposed bottom hole location or has a right to drill this well at this location pursuant to a contract with an owner of such mineral or working interest, or to a voluntary pooling agreement or a compulsory pooling order heretofore entered by the division.

Reesa Holland 3/10/11
Signature Date

REESA HOLLAND
Printed Name

SURVEYOR CERTIFICATION

I hereby certify that the well location shown on this plat was plotted from field notes of actual surveys made by me or under my supervision, and that the same is true and correct to the best of my belief.

JUNE 05, 2006

Date Surveyed _____ MR
Signature & Seal of _____
Professional Surveyor

Ronald J. Eidson 6/19/06
06.11.0941

Certificate No. GARY EIDSON 12641
RONALD J. EIDSON 3239

DISTRICT I

1625 N. FRENCH DR., HOBBS, NM 88240

RECEIVED

State of New Mexico

Energy, Minerals and Natural Resources Department

Form C-102

Revised October 12, 2005

Submit to Appropriate District Office

State Lease - 4 Copies

Fee Lease - 3 Copies

DISTRICT II

1301 W. GRAND AVENUE, ARTESIA, NM 88210

OIL CONSERVATION DIVISION

1220 SOUTH ST. FRANCIS DR.

Santa Fe, New Mexico 87505

DISTRICT III

1000 Rio Brazos Rd., Aztec, NM 87410

DISTRICT IV

1220 S. ST. FRANCIS DR., SANTA FE, NM 87505

WELL LOCATION AND ACREAGE DEDICATION PLAT

☐ AMENDED REPORT

API Number 30-025-39390	Pool Code 19190	Pool Name DRINKARO
Property Code 31036	Property Name HAWK A-5	Well Number 4
OGRID No. 873	Operator Name APACHE CORPORATION	Elevation 3494'

Surface Location

UL or lot No.	Section	Township	Range	Lot Idn	Feet from the	North/South line	Feet from the	East/West line	County
P	5	21-S	37-E		450	SOUTH	450	EAST	LEA

Bottom Hole Location If Different From Surface

UL or lot No.	Section	Township	Range	Lot Idn	Feet from the	North/South line	Feet from the	East/West line	County

Dedicated Acres	Joint or Infill	Consolidation Code	Order No.
40			DHC-HOB-0437

NO ALLOWABLE WILL BE ASSIGNED TO THIS COMPLETION UNTIL ALL INTERESTS HAVE BEEN CONSOLIDATED
OR A NON-STANDARD UNIT HAS BEEN APPROVED BY THE DIVISION

LOT 4 37.37 AC LOT 5	LOT 3 37.50 AC LOT 6	LOT 2 37.64 AC LOT 7	LOT 1 37.77 AC LOT 8
40.00 AC LOT 12	40.00 AC LOT 11	40.00 AC LOT 10	40.00 AC LOT 9
40.00 AC LOT 13	40.00 AC LOT 14	40.00 AC LOT 15	40.00 AC LOT 16
40.00 AC	40.00 AC	40.00 AC	40.00 AC

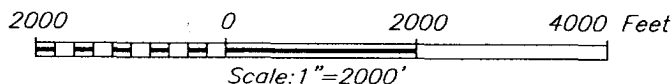
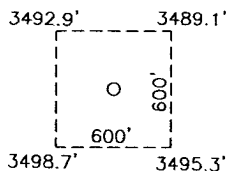
GEODETIC COORDINATES
NAD 27 NME

Y=548204.7 N

X=856325.1 E

LAT.=32°30'06.54" N
LONG.=103°10'39.26" W

DETAIL



OPERATOR CERTIFICATION

I hereby certify that the information herein is true and complete to the best of my knowledge and belief, and that this organization either owns a working interest or unleased mineral interest in the land including the proposed bottom hole location or has a right to drill this well at this location pursuant to a contract with an owner of such mineral or working interest, or to a voluntary pooling agreement or a compulsory pooling order heretofore entered by the division.

Reesa Holland 3/10/11
Signature Date

REESA HOLLAND
Printed Name

SURVEYOR CERTIFICATION

I hereby certify that the well location shown on this plat was plotted from field notes of actual surveys made by me or under my supervision, and that the same is true and correct to the best of my belief.

JUNE 05, 2006

Date Surveyed MR
Signature & Seal of Professional Surveyor

Ronald J. Eidson 6/19/06
06.11.0941

Certificate No. GARY EIDSON 12641
RONALD J. EIDSON 3239