

RECEIVED

MAR 21 2011

## DISTRICT I

1625 N. FRENCH DR., HOBBS, NM 88240

## DISTRICT II

1301 W. GRAND AVENUE, ARTESIA, NM 88210

## DISTRICT III

1000 RIO BRAZOS RD., AZTEC, NM 87410

## DISTRICT IV

11885 S. ST. FRANCIS DR., SANTA FE, NM 87505

State of New Mexico  
Energy, Minerals and Natural Resources Department

JW

Form C-102

Revised October 12, 2005

Submit to Appropriate District Office

State Lease - 4 Copies

Fee Lease - 3 Copies

## OIL CONSERVATION DIVISION

11885 SOUTH ST. FRANCIS DR.

Santa Fe, New Mexico 87505

## WELL LOCATION AND ACREAGE DEDICATION PLAT

☐ AMENDED REPORT

API Number <b>30-025-39966</b>	Pool Code <b>33230</b>	Pool Name <b>HOUSE; BLUEBRY</b>
Property Code <b>303228</b>	Property Name <b>RED TAG</b>	Well Number <b>4</b>
OGRID No. <b>873</b>	Operator Name <b>APACHE CORPORATION</b>	Elevation <b>3581'</b>

## Surface Location

UL or lot No.	Section	Township	Range	Lot Idn	Feet from the	North/South line	Feet from the	East/West line	County
K	2	20-S	38-E		1750	SOUTH	1650	WEST	LEA

## Bottom Hole Location If Different From Surface

UL or lot No.	Section	Township	Range	Lot Idn	Feet from the	North/South line	Feet from the	East/West line	County

Dedicated Acres <b>40</b>	Joint or Infill	Consolidation Code	Order No.
------------------------------	-----------------	--------------------	-----------

NO ALLOWABLE WILL BE ASSIGNED TO THIS COMPLETION UNTIL ALL INTERESTS HAVE BEEN CONSOLIDATED  
OR A NON-STANDARD UNIT HAS BEEN APPROVED BY THE DIVISION

LOT 4	LOT 3	LOT 2	LOT 1
39.73 AC.	39.77 AC.	39.79 AC.	39.83 AC.

GEODETTIC COORDINATES  
NAD 27 NME  
SURFACE LOCATION

Y=583980.5 N  
X=873048.2 E

LAT.=32.599626° N  
LONG.=103.122020° W

LAT.=32°35'58.65"N  
LONG.=103°07'19.27"W

1650'

1750'

**OPERATOR CERTIFICATION**

I hereby certify that the information herein is true and complete to the best of my knowledge and belief, and that this organization either owns a working interest or unleased mineral interest in the land including the proposed bottom hole location or has a right to drill this well at this location pursuant to a contract with an owner of such mineral or working interest, or to a voluntary pooling agreement or a compulsory pooling order heretofore entered by the division.

*Reesa Holland* 2/2/11  
Signature Date

**REESA HOLLAND**  
Printed Name

**SURVEYOR CERTIFICATION**

I hereby certify that the well location shown on this plat was plotted from field notes of actual surveys made by me or under my supervision, and that the same is true and correct to the best of my belief.

NOVEMBER 10, 2010

Date Surveyed

*Ronald J. Eidson*  
Signature & Seal of Professional Surveyor

**RONALD J. EIDSON**  
Professional Surveyor

Certificate No. 12641  
RONALD J. EIDSON 3239

RECEIVED

DISTRICT I  
1625 N. FRENCH DR., HOBBS, NM 88240

MAR 21 2011

State of New Mexico  
Energy, Minerals and Natural Resources Department

*[Handwritten Signature]*

Form C-102

Revised October 12, 2005

Submit to Appropriate District Office

State Lease - 4 Copies

Fee Lease - 3 Copies

DISTRICT II  
1301 W. GRAND AVENUE, ARTESIA, NM 88210

HOBBS

OIL CONSERVATION DIVISION

11885 SOUTH ST. FRANCIS DR.  
Santa Fe, New Mexico 87505

DISTRICT III  
1000 RIO BRAZOS RD., AZTEC, NM 87410

DISTRICT IV  
11885 S. ST. FRANCIS DR., SANTA FE, NM 87505

WELL LOCATION AND ACREAGE DEDICATION PLAT

☐ AMENDED REPORT

API Number <b>30-025-39966</b>	Pool Code <b>78760</b>	Pool Name <b>House; TubB</b>
Property Code <b>303228</b>	Property Name <b>RED TAG</b>	Well Number <b>4</b>
OGRID No. <b>873</b>	Operator Name <b>APACHE CORPORATION</b>	Elevation <b>3581'</b>

Surface Location

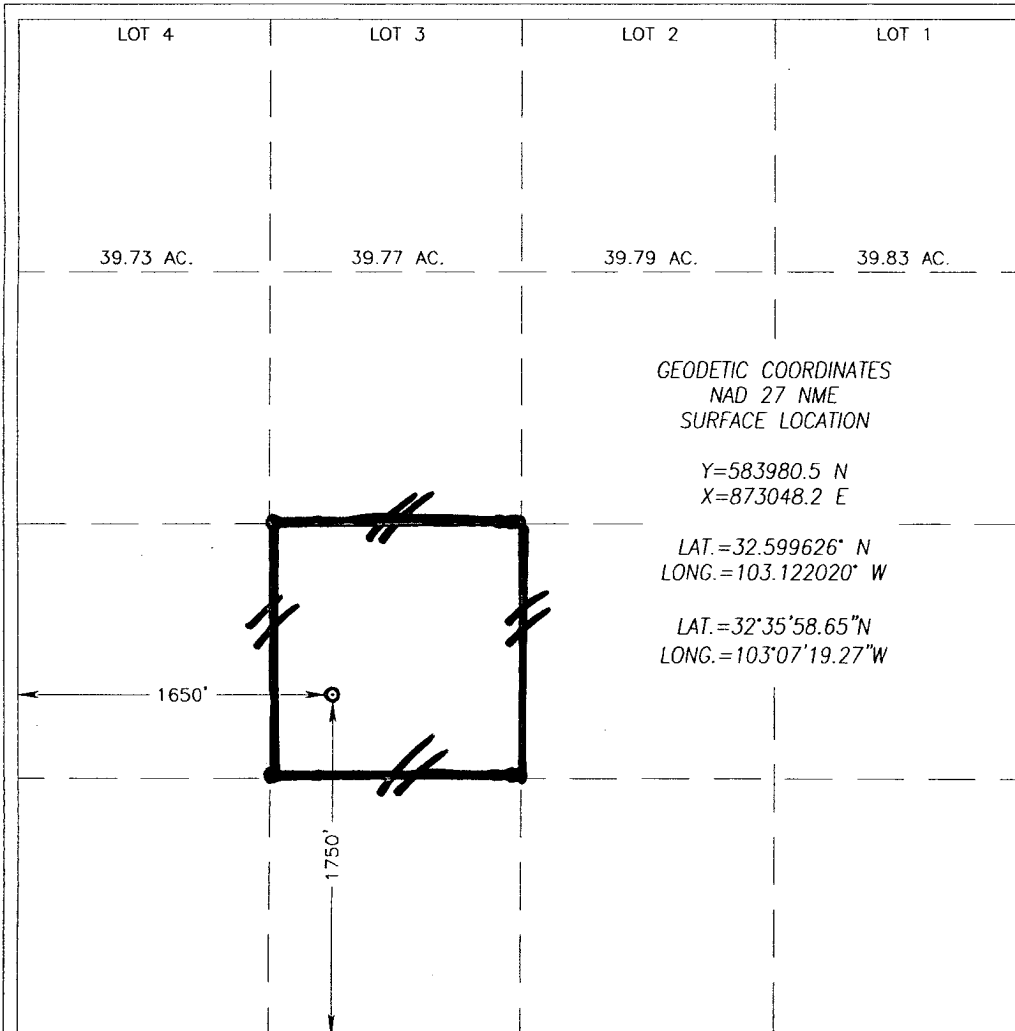
UL or lot No.	Section	Township	Range	Lot Idn	Feet from the	North/South line	Feet from the	East/West line	County
K	2	20-S	38-E		1750	SOUTH	1650	WEST	LEA

Bottom Hole Location If Different From Surface

UL or lot No.	Section	Township	Range	Lot Idn	Feet from the	North/South line	Feet from the	East/West line	County

Dedicated Acres <b>40</b>	Joint or Infill	Consolidation Code	Order No.
------------------------------	-----------------	--------------------	-----------

NO ALLOWABLE WILL BE ASSIGNED TO THIS COMPLETION UNTIL ALL INTERESTS HAVE BEEN CONSOLIDATED  
OR A NON-STANDARD UNIT HAS BEEN APPROVED BY THE DIVISION



OPERATOR CERTIFICATION

I hereby certify that the information herein is true and complete to the best of my knowledge and belief, and that this organization either owns a working interest or unleased mineral interest in the land including the proposed bottom hole location or has a right to drill this well at this location pursuant to a contract with an owner of such mineral or working interest, or to a voluntary pooling agreement or a compulsory pooling order heretofore entered by the division.

*[Signature]* **Reesa Holland** 3/2/11  
Signature Date  
**REESA HOLLAND**  
Printed Name

SURVEYOR CERTIFICATION

I hereby certify that the well location shown on this plat was plotted from field notes of actual surveys made by me or under my supervision, and that the same is true and correct to the best of my belief.

**RONALD J. EIDSON**  
NOVEMBER 9 2010  
Date Surveyed  
Signature & Seal of Professional Surveyor  
*[Signature]* **Ronald J. Eidson** 11/9/2010  
Certificate No. **GARY G. EIDSON 12641**  
**RONALD J. EIDSON 3239**

RECEIVED

DISTRICT I

1625 N. FRENCH DR., HOBBS, NM 88240

DISTRICT II

1301 W. GRAND AVENUE, ARTESIA, NM 88210

DISTRICT III

1000 RIO BRAZOS RD., AZTEC, NM 87410

DISTRICT IV

11885 S. ST. FRANCIS DR., SANTA FE, NM 87505

State of New Mexico  
Energy, Minerals and Natural Resources Department

*JW*

Form C-102

Revised October 12, 2005

Submit to Appropriate District Office

State Lease - 4 Copies

Fee Lease - 3 Copies

MAR 21 2011

HOBBS CO

OIL CONSERVATION DIVISION

11885 SOUTH ST. FRANCIS DR.  
Santa Fe, New Mexico 87505

WELL LOCATION AND ACREAGE DEDICATION PLAT

☐ AMENDED REPORT

API Number <b>30-025-39966</b>	Pool Code <b>33250</b>	Pool Name <b>HOUSE; DRINKARD</b>
Property Code <b>303228</b>	Property Name <b>RED TAG</b>	Well Number <b>4</b>
OGRID No. <b>873</b>	Operator Name <b>APACHE CORPORATION</b>	Elevation <b>3581'</b>

Surface Location

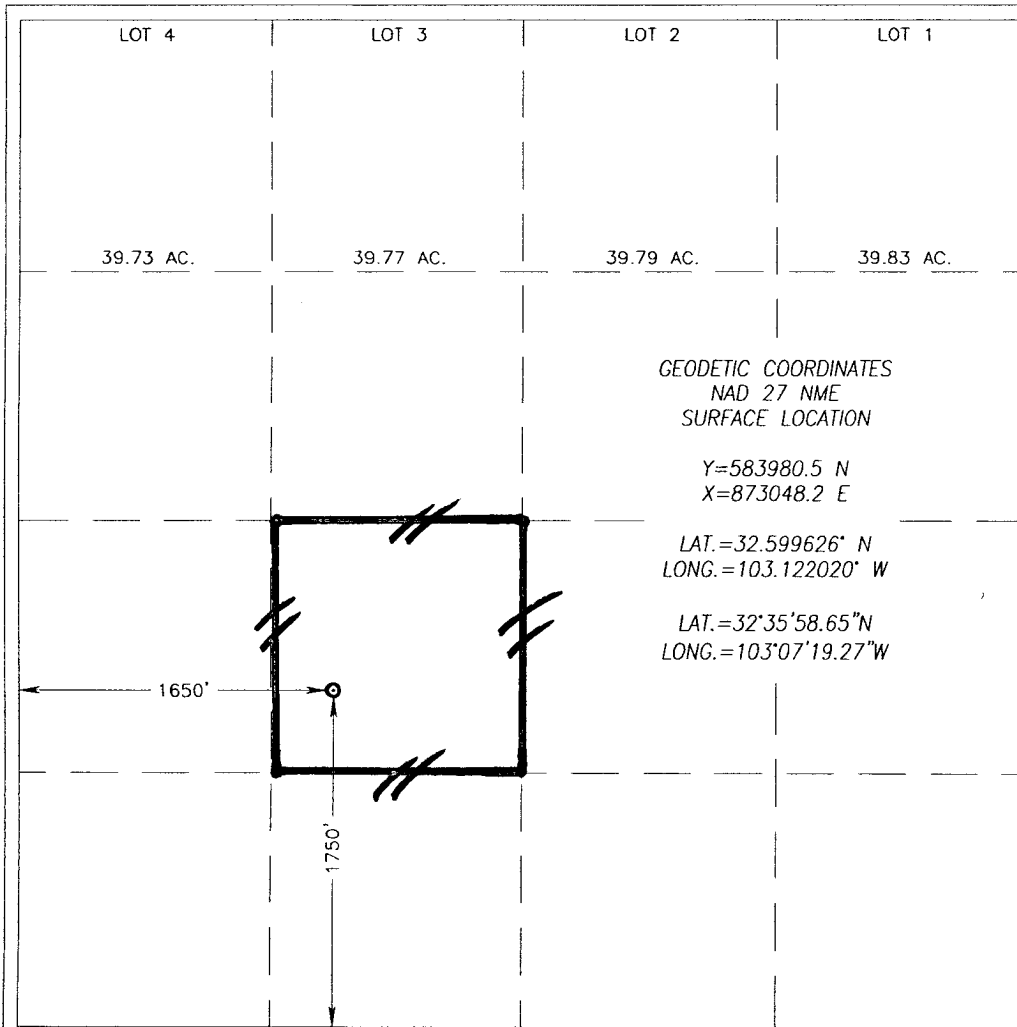
UL or lot No.	Section	Township	Range	Lot Idn	Feet from the	North/South line	Feet from the	East/West line	County
K	2	20-S	38-E		1750	SOUTH	1650	WEST	LEA

Bottom Hole Location If Different From Surface

UL or lot No.	Section	Township	Range	Lot Idn	Feet from the	North/South line	Feet from the	East/West line	County

Dedicated Acres <b>40</b>	Joint or Infill	Consolidation Code	Order No.
------------------------------	-----------------	--------------------	-----------

NO ALLOWABLE WILL BE ASSIGNED TO THIS COMPLETION UNTIL ALL INTERESTS HAVE BEEN CONSOLIDATED  
OR A NON-STANDARD UNIT HAS BEEN APPROVED BY THE DIVISION



OPERATOR CERTIFICATION

I hereby certify that the information herein is true and complete to the best of my knowledge and belief, and that this organization either owns a working interest or unleased mineral interest in the land including the proposed bottom hole location or has a right to drill this well at this location pursuant to a contract with an owner of such mineral or working interest, or to a voluntary pooling agreement or a compulsory pooling order heretofore entered by the division.

*Reesa Holland* 2/2/11  
Signature Date  
**REESEA HOLLAND**  
Printed Name

SURVEYOR CERTIFICATION

I hereby certify that the well location shown on this plat was plotted from field notes of actual surveys made by me or under my supervision, and that the same is true and correct to the best of my belief.

NOVEMBER 29 2010  
Date Surveyed  
Signature & Seal of Professional Surveyor  
3239  
Certificate No. **RONALD J. EIDSON** 12641  
RONALD J. EIDSON 3239