

District I
1625 N. French Dr., Hobbs, NM 88240
District II
1301 W. Grand Avenue, Artesia, NM 88210
District III
1000 Rio Brazos Road, Aztec, NM 87410
District IV
1220 S. St. Francis Dr., Santa Fe, NM 87505

RECEIVED

MAR 15 2011

HOBBSOCD

State of New Mexico
Energy Minerals and Natural Resources

Form C-101
June 16, 2008

Oil Conservation Division
1220 South St. Francis Dr.
Santa Fe, NM 87505

Submit to appropriate District Office

☐ AMENDED REPORT

APPLICATION FOR PERMIT TO DRILL, RE-ENTER, DEEPEN, PLUGBACK, OR ADD A ZONE

¹ Operator Name and Address Endeavor Energy Resources, LP 110 N. Marienfeld Suite 200 Midland, TX 79701		² OGRID Number 190595	
³ Property Code 31972		³ API Number 30 - 025- 34491	
⁴ Property Name State 18		⁵ Well No. 001	
⁶ Proposed Pool 1 Wildcat; Strawn Tatum Upper Penn (96786)		⁶ Proposed Pool 2 Wildcat; Cisto	

Surface Location

UL or lot no.	Section	Township	Range	Lot Idn	Feet from the	North/South line	Feet from the	East/West line	County
A	18	13S	36E		330	North	330	East	Lea

⁸ Proposed Bottom Hole Location If Different From Surface

UL or lot no.	Section	Township	Range	Lot Idn	Feet from the	North/South line	Feet from the	East/West line	County

Additional Well Information

¹¹ Work Type Code D	¹² Well Type Code O	¹³ Cable/Rotary R	¹⁴ Lease Type Code S	¹⁵ Ground Level Elevation 4005
¹⁶ Multiple N	¹⁷ Proposed Depth 11260	¹⁸ Formation Strawn	¹⁹ Contractor J&L Well Service	²⁰ Spud Date ASAP

²¹ Proposed Casing and Cement Program

Hole Size	Casing Size	Casing weight/foot	Setting Depth	Sacks of Cement	Estimated TOC
17 1/2"	13 3/8"	48	453	495	Surface-In Place
11"	8 5/8"	32	4502	1100	Surface-In Place
7 5/8"	4 1/2"	11.6	11260	735	7000'

²² Describe the proposed program. If this application is to DEEPEN or PLUG BACK, give the data on the present productive zone and proposed new productive zone.

Describe the blowout prevention program, if any. Use additional sheets if necessary.

Endeavor Proposes to drill out cement plugs from 5850ft to TD 11260 with fresh water.

Double Hydraulic BOP equipped with pipe and blind rams

4 1/2" casing will be set at TD 11260ft and cement brought back to approximately 7000ft

Enclosed ; C102, C144 CLEZ, Design, Operation, Closure Plan, BOP Diagram, Before and after well diagrams

Permit Expires 2 Years From Approved
Date Unless Drilling Underway

Deeper

²³ I hereby certify that the information given above is true and complete to the best of my knowledge and belief.

Signature:

Billy E. Prichard

Printed name: Billy E. Prichard

Title: Agent for Endeavor Energy Resources, LP

E-mail Address: billy@pwlle.net

Date: 3/11/11

Phone: 4329347680

OIL CONSERVATION DIVISION

Approved by:

PETROLEUM ENGINEER

Title:

Approval Date: MAR 24 2011

Expiration Date:

APD approved for Deepen & workover ONLY

Operator must be in compliance with Part 5.9(A) before you can produce this well.

See letter dated 03/23/11 from

Oil Conservation Division Santa Fe office.

District I

1625 N. French Dr., Hobbs, NM 88240

District II

1301 W. Grand Avenue, Artesia, NM 88210

District III

1000 Rio Brazos Rd., Aztec, NM 87410

District IV

1220 S. St. Francis Dr., Santa Fe, NM 87505

State of New Mexico

Energy, Minerals & Natural Resources Department

OIL CONSERVATION DIVISION

1220 South St. Francis Dr.

Santa Fe, NM 87505

Form C-102

Revised October 12, 2005

Submit to Appropriate District Office

State Lease - 4 Copies

Fee Lease - 3 Copies

☐ AMENDED REPORT

WELL LOCATION AND ACREAGE DEDICATION PLAT

¹ API Number 30-025-34491		² Pool Code 96786	³ Pool Name Wildcat; Strawn
⁴ Property Code	⁵ Property Name State 18		⁶ Well Number 001
⁷ OGRID No. 190595	⁸ Operator Name Endeavor Energy Resources, L.P.		⁹ Elevation 4005

¹⁰ Surface Location

UL or lot no.	Section	Township	Range	Lot Idn	Feet from the	North/South line	Feet from the	East/West line	County
A	18	13S	36E		330	North	330	East	Lea

¹¹ Bottom Hole Location If Different From Surface

UL or lot no.	Section	Township	Range	Lot Idn	Feet from the	North/South line	Feet from the	East/West line	County
---------------	---------	----------	-------	---------	---------------	------------------	---------------	----------------	--------

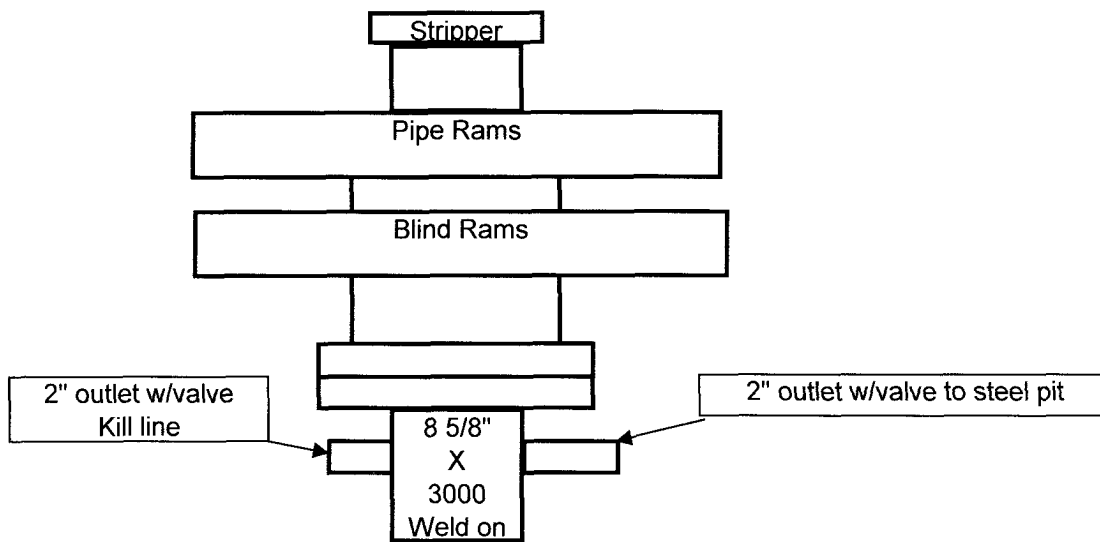
¹² Dedicated Acres 40	¹³ Joint or Infill	¹⁴ Consolidation Code	¹⁵ Order No.
-------------------------------------	-------------------------------	----------------------------------	-------------------------

No allowable will be assigned to this completion until all interests have been consolidated or a non-standard unit has been approved by the division.

¹⁶ 	¹⁷ OPERATOR CERTIFICATION I hereby certify that the information contained herein is true and complete to the best of my knowledge and belief, and that this organization either owns a working interest or unleased mineral interest in the land including the proposed bottom hole location or has a right to drill this well at this location pursuant to a contract with an owner of such a mineral or working interest, or to a voluntary pooling agreement or a compulsory pooling order heretofore entered by the division. <i>Billy E. Prichard</i> 3/11/11 Signature Date Billy E. Prichard Printed Name
	¹⁸ SURVEYOR CERTIFICATION I hereby certify that the well location shown on this plat was plotted from field notes of actual surveys made by me or under my supervision, and that the same is true and correct to the best of my belief. Date of Survey Signature and Seal of Professional Surveyor:
	Certificate Number

Endeavor Energy
State 18 # 001
API 30-025-34491

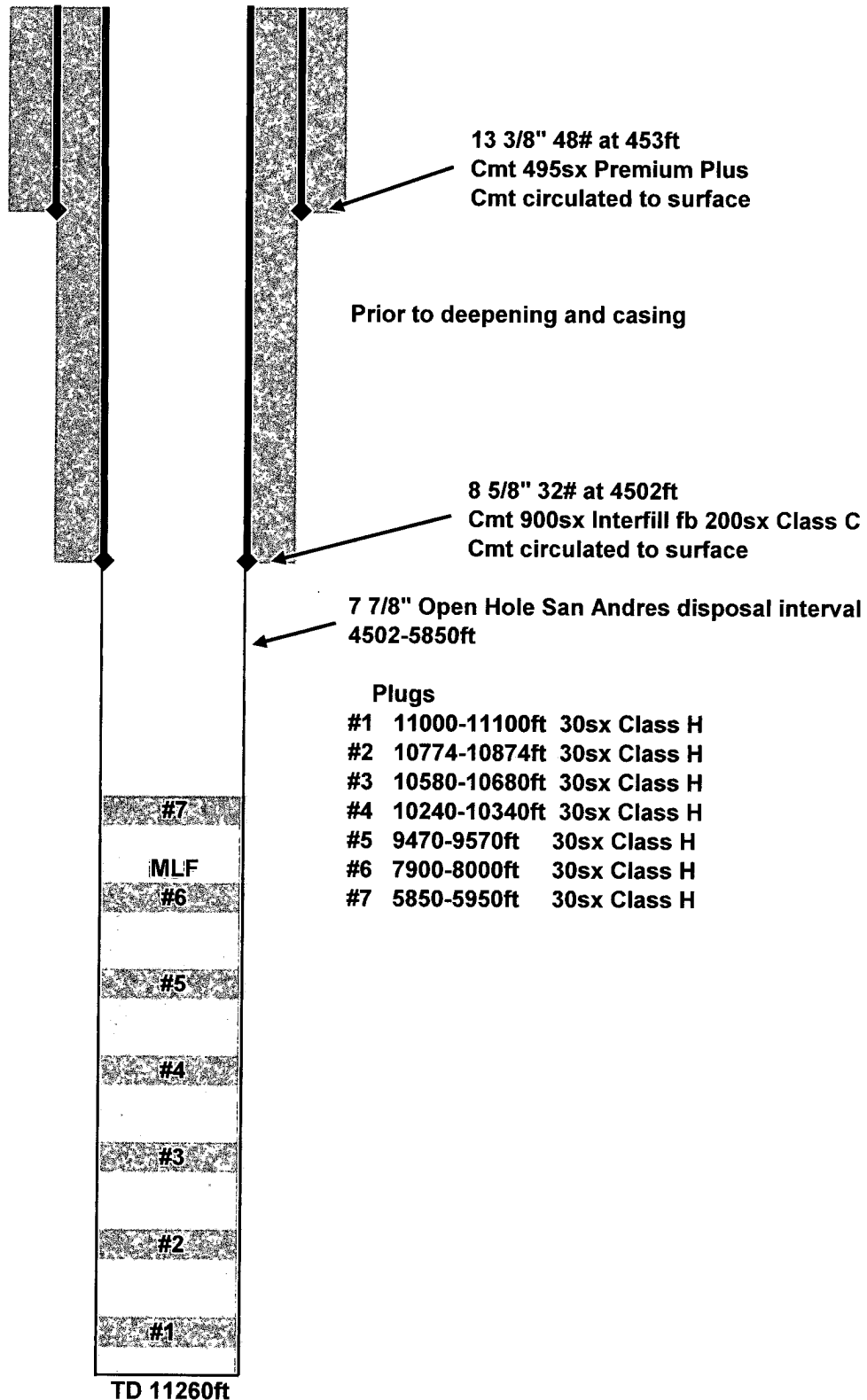
8" x 3000 Hydraulic Double BOP



BEP

www.pwllc.net

Endeavor Energy Resources
State 18 # 1
API # 30-025-34491
330 FNL x 330 FEL
Section 18, T13S, R36E
Lea County, New Mexico



Endeavor Energy Resources
State 18 # 1
API # 30-025-34491
330 FNL x 330 FEL
Section 18, T13S, R36E
Lea County, New Mexico

