

DISTRICT I
1625 N. French Dr., Hobbs, NM 88240

DISTRICT II
1301 W. Grand Avenue, Artesia, NM 88210

DISTRICT III
1000 Rio Brazos Rd., Aztec, NM 87410

DISTRICT IV
1220 S. St. Francis Dr., Santa Fe, NM 87505

State of New Mexico
Energy, Minerals and Natural Resources Department

Form C-102
Revised October 12, 2005

Submit to Appropriate District Office
State Lease - 4 Copies
Fee Lease - 3 Copies

OIL CONSERVATION DIVISION
1220 South St. Francis Dr.
Santa Fe, New Mexico 87505

02 2008

AMENDED REPORT

WELL LOCATION AND ACREAGE

| | | |
|----------------------------|---------------------------------------|----------------------------------|
| API Number 30-025-34015 | Pool Code 97741 | Well Name Wildcat Bone Spring |
| Property Code 37281 | Property Name REDBULL "35" FEDERAL | Well Number 1 |
| OGRID No. 190595 | Operator Name ENDEAVOR | Elevation 3323' |

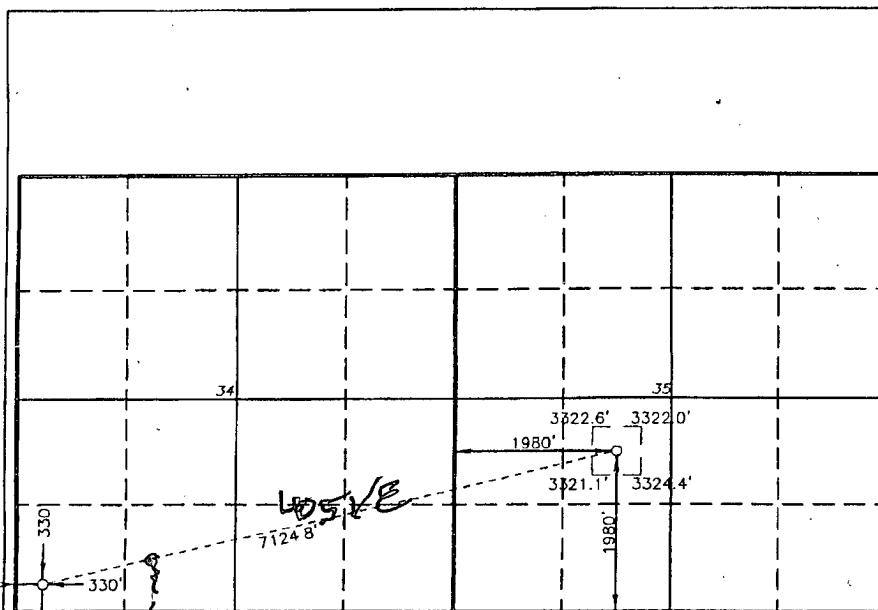
Surface Location

| UL or lot No. | Section | Township | Range | Lot Idn | Feet from the | North/South line | Feet from the | East/West line | County |
|---------------|---------|----------|-------|---------|---------------|------------------|---------------|----------------|--------|
| K | 35 | 25 S | 33 E | | 1980 | SOUTH | 1980 | WEST | LEA |

Bottom Hole Location If Different From Surface

| UL or lot No. | Section | Township | Range | Lot Idn | Feet from the | North/South line | Feet from the | East/West line | County |
|---------------------------|-----------------|--------------------|------------------|---------|---------------|------------------|---------------|----------------|--------|
| M | 34 | 25 S | 33 E | | 330 | SOUTH | 330 | WEST | LEA |
| Dedicated Acres 240.00 | Joint or Infill | Consolidation Code | Order No. 770 | 4051/E | | | | | |

NO ALLOWABLE WILL BE ASSIGNED TO THIS COMPLETION UNTIL ALL INTERESTS HAVE BEEN CONSOLIDATED
OR A NON-STANDARD UNIT HAS BEEN APPROVED BY THE DIVISION



BOTTOM HOLE LOCATION
Lat - N32°04'50.4"
Long - W103°34'03.5"
SPC- N.: 393929.22
E.: 778484.83
(NAD-83)

SURFACE LOCATION
Lat - N32°05'06.65"
Long - W103°32'42.95"
SPC- N.: 395617.2
E.: 785406.8
(NAD-83)

1" = 2000'

OPERATOR CERTIFICATION

I hereby certify that the information contained herein is true and complete to the best of my knowledge and belief, and that this organization either owns a working interest or undivided mineral interest in the land including the proposed bottom hole location pursuant to a contract with an owner of such a mineral or working interest, or to a voluntary pooling agreement or a compulsory pooling order heretofore entered by the division.

Nash J. Duvall, Jr. 6-16-2008
Signature Date

Nash J. Duvall, Jr.
Printed Name

SURVEYOR CERTIFICATION

I hereby certify that the well location shown on this plat was plotted from field notes of actual surveys made by me or under my supervision, and that the same is true and correct to the best of my belief.

FEBRUARY 19, 2008

Date Surveyed
Signature & Seal
Professional Surveyor

Gary L. Jones
Professional Surveyor
W.O. 7977

Certificate No. Gary L. Jones 7977

BASIN SURVEYS

MAR 28 2008