

30-025-40097

RECEIVED

MAR 28 2011

COG Operating LLC
Hydrogen Sulfide Drilling Operation Plan HOBBSOCD**I. HYDROGEN SULFIDE TRAINING**

All personnel, whether regularly assigned, contracted, or employed on an unscheduled basis, will receive training from a qualified instructor in the following areas prior to commencing drilling operations on this well:

1. The hazards and characteristics of hydrogen sulfide (H₂S)
2. The proper use and maintenance of personal protective equipment and life support systems.
3. The proper use of H₂S detectors, alarms, warning systems, briefing areas, evacuation procedures, and prevailing winds.
4. The proper techniques for first aid and rescue procedures.

In addition, supervisory personnel will be trained in the following areas:

1. The effects of H₂S on metal components. If high tensile tubular are to be used, personnel will be trained in their special maintenance requirements.
2. Corrective action and shut-in procedures when drilling or reworking a well and blowout prevention and well control procedures.
3. The contents and requirements of the H₂S Drilling Operations Plan and Public Protection Plan.

There will be an initial training session just prior to encountering a known or probable H₂S zone (within 3 days or 500 feet) and weekly H₂S and well control drills for all personnel in each crew. The initial training session shall include a review of the site specific H₂S Drilling Operations Plan and the Public Protection Plan. **The concentrations of H₂S of wells in this area from surface to TD are low enough that a contingency plan is not required.**

II. H2S SAFETY EQUIPMENT AND SYSTEMS

Note: All H2S safety equipment and systems will be installed, tested, and operational when drilling reaches a depth of 500 feet above, or three days prior to penetrating the first zone containing or reasonable expected to contain H2S.

1. Well Control Equipment:

- A. Flare line.
- B. Choke manifold.
- C. Blind rams and pipe rams to accommodate all pipe sizes with properly sized closing unit.
- D. Auxiliary equipment may include if applicable: annular preventer & rotating head.

2. Protective equipment for essential personnel:

- A. Mark II Survive air 30-minute units located in the doghouse and at briefing areas, as indicated on well site diagram.

3. H2S detection and monitoring equipment:

- A. 1 portable H2S monitors positioned on location for best coverage and response. These units have warning lights and audible sirens when H2S levels of 20 PPM are reached.

4. Visual warning systems:

- A. Wind direction indicators as shown on well site diagram (Exhibit #8).
- B. Caution/Danger signs (Exhibit #7) shall be posted on roads providing direct access to location. Signs will be painted a high visibility yellow with black lettering of sufficient size to be readable at a reasonable distance from the immediate location. Bilingual signs will be used, when appropriate. See example attached.

5. Mud program:

- A. The mud program has been designed to minimize the volume of H2S circulated to surface. Proper mud weight, safe drilling practices, and the use of H2S scavengers will minimize hazards when penetrating H2S bearing zones.

6. Metallurgy:

- A. All drill strings, casings, tubing, wellhead, blowout preventer, drilling spool, kill lines, choke manifold and lines, and valves shall be suitable for H₂S service.
- B. All elastomers used for packing and seals shall be H₂S trim.

7. Communication:

- A. Radio communications in company vehicles including cellular telephone and 2-way radio.
- B. Land line (telephone) communication at Office.

8. Well testing:

- A. Drill stem testing will be performed with a minimum number of personnel in the immediate vicinity, which are necessary to safely and adequately conduct the test. The drill stem testing will be conducted during daylight hours and formation fluids will not be flowed to the surface. All drill-stem-testing operations conducted in an H₂S environment will use the closed chamber method of testing.
- B. There will be no drill stem testing.

EXHIBIT #7

WARNING
YOU ARE ENTERING AN H₂S
AUTHORIZED PERSONNEL ONLY

- 1. BEARDS OR CONTACT LENSES NOT ALLOWED
- 2. HARD HATS REQUIRED
- 3. SMOKING IN DESIGNATED AREAS ONLY
- 4. BE WIND CONSCIOUS AT ALL TIMES
- 5. CHECK WITH COG OPERATING FOREMAN AT

COG OPERATING LLC
1-432-683-7443
1-575-746-2010

EDDY COUNTY EMERGENCY NUMBERS

ARTESIA FIRE DEPT. 575-746-5050
ARTESIA POLICE DEPT. 575-746-5000
EDDY CO. SHERIFF DEPT. 575-746-9888

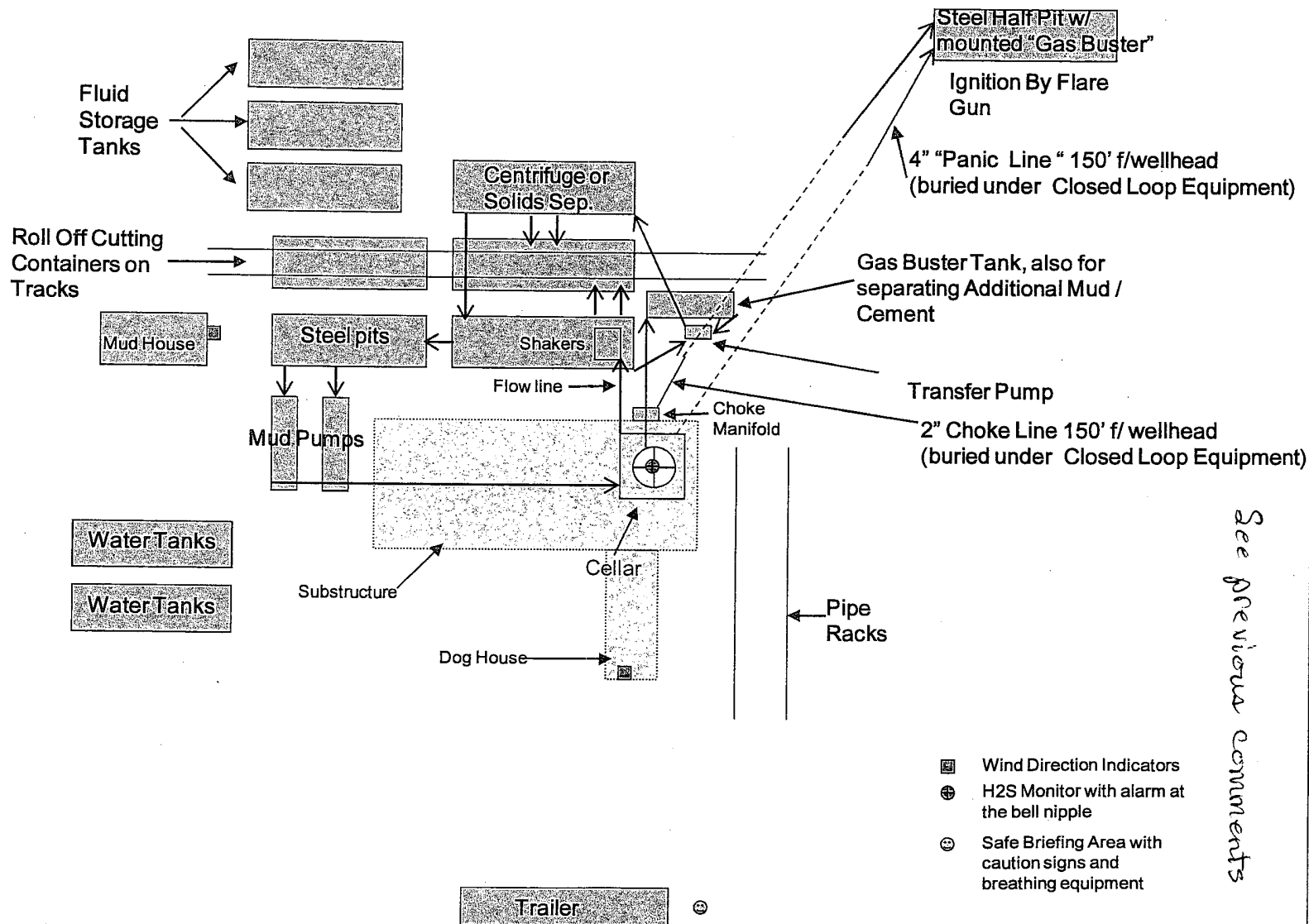
LEA COUNTY EMERGENCY NUMBERS

HOBBS FIRE DEPT. 575-397-9308
HOBBS POLICE DEPT. 575-397-9285
LEA CO. SHERIFF DEPT. 575-396-1196

COG Operating LLC

EXHIBIT 8

Drilling Location - H2S Safety Equipment Diagram



MAR 28 2011

HOBBSCOCD

Surface Use Plan
COG Operating, LLC
B C Federal #60
SHL: 1305' FNL & 915' FWL, Unit D
BHL: 1650' FNL & 990' FWL, Unit E
Section 20, T-17-S, R-32-E
Lea County, New Mexico

SURFACE USE AND OPERATING PLAN

1. Existing & Proposed Access Roads

- A. The well site survey and elevation plat for the proposed well is shown in Exhibit #1. It was staked by John West Engineering, Hobbs, NM.
- B. All roads to the location are shown in the topographic map Exhibit #2. The existing lease roads are illustrated and are adequate for travel during drilling and production operations. Upgrading existing roads prior to drilling the well will be done where necessary.
- C. Directions to Location: From the intersection of U.S. Hwy #82 and Eddy Co. Rd. #224 (Ripple Rd.), go Southeast approx 1.0 mile. Veer Right and go South approx 0.4 miles. Turn Left and go East approx 1.1 miles. Turn Left and go North-Northeast approx 0.25 miles. This location is approx 260 feet Northwest of Lease Road. See Vicinity Map, Exhibit #3
- D. Routine grading and maintenance of existing roads will be conducted as necessary to maintain their condition as long as any operations continue on this lease.

2. Proposed Access Road:

Exhibit #4 shows that 177' of new access road will be required for this location. If any road is required it will be constructed as follows:

- A. The maximum width of the running surface will be 14'. The road will be crowned, ditched and constructed of 6" rolled and compacted caliche. Ditches will be at 3:1 slope and 4 feet wide. Water will be diverted where necessary to avoid ponding, prevent erosion, maintain good drainage, and to be consistent with local drainage patterns.
- B. The average grade will be less than 1%.
- C. No turnouts are planned.
- D. No culverts, cattleguard, gates, low water crossings or fence cuts are necessary.
- E. Surfacing material will consist of native caliche. Caliche will be obtained from the nearest BLM approved caliche pit or reserve pit area.

3. Location of Existing Well:

Exhibit #5 shows all existing wells within a one-mile radius of this well.

As shown on this plat there are numerous wells producing from the San Andres and Yeso formations.

4. Location of Existing and/or Proposed Facilities:

- A. COG Operating LLC does operate a production facility on this lease.
- B. If the well is productive, contemplated facilities will be as follows:
 - 1) Production will be sent to the BC Federal tank battery located at the BC Federal #1 well location at 330' FNL & 1575' FWL, Section 20, T17S, R32E, Unit C. The facility location is shown in Exhibit #5.
 - 2) The tank battery and facilities including all flow lines and piping will be installed according to API specifications.
 - 3) Any additional caliche will be obtained from a BLM approved caliche pit. Any additional construction materials will be purchased from contractors.
 - 4) Proposed flow lines, will follow an archaeologically approved route to the BC Federal tank battery located at the BC Federal #1 well location at 330' FNL & 1575' FWL, Section 20, T17S, R32E, Unit C. The flowline will be SDR 7 3" poly line laid on the surface and will be approximately 2235' in length.
 - 5) It will be necessary to run electric power if this well is productive. Power will be provided by CVE and they will submit a separate plan and ROW for service to the well location.
 - 6) If the well is productive, rehabilitation plans will include the following:
 - a) The original topsoil from the well site will be returned to the location, and the site will be re-contoured as close as possible to the original site.

5. Location and Type of Water Supply:

The well will be drilled with combination brine and fresh water mud system as outlined in the drilling program. The water will be obtained from commercial water stations in the area and hauled to location by transport truck over the existing and proposed access roads shown in Exhibit #2. If a commercial fresh water source is nearby, fast line may be laid along existing road ROW's and fresh water pumped to the well. No water well will be drilled on the location.

6. Source of Construction Materials:

All caliche required for construction of the drill pad and proposed new access road (approximately 2500 cubic yards) will be obtained from a BLM approved caliche pit or the reserve pit.

7. Methods of Handling Water Disposal:

- A. The well will be drilled utilizing a closed loop mud system. Drill cuttings will be held in roll-off style mud boxes and taken to an NMOCD approved disposal site.
- B. Drilling fluids will be contained in steel mud pits.
- C. Water produced from the well during completion will be held temporarily in steel tanks and then taken to an NMOCD approved commercial disposal facility.
- D. Garbage and trash produced during drilling or completion operations will be collected in a trash bin and hauled to an approved landfill. No toxic waste or hazardous chemicals will be produced by this operation.
- E. After the rig is moved out and the well is either completed or abandoned, all waste materials will be cleaned up within 30 days. In the event of a dry hole only a dry hole marker will remain.

8. Ancillary Facilities:

No airstrip, campsite or other facilities will be built as a result of the operation on this well.

9. Well Site Layout:

- A. The drill pad layout, with elevations staked by John West Engineering, is shown in Exhibit #4. Dimensions of the pad and pits are shown on Exhibit #6. V door direction is Southeast. Topsoil, if available, will be stockpiled per BLM specifications. Because the pad is almost level no major cuts will be required.
- B. Exhibit #6 also shows the proposed orientation of closed loop system and access road. No permanent living facilities are planned, but a temporary foreman/toolpusher's trailer will be on location during the drilling operations.

10. Plans for Restoration of the Surface:

- A. The location and road will be rehabilitated as recommended by the BLM.
- B. Upon completion of proposed operations, if the well is completed, the reserve pit area will be closed as outlined in Section 4.6 above within the same prescribed time. Any additional caliche required for facilities will be obtained from a BLM approved caliche pit. Topsoil removed from the drill site will be used to re-contour the pit area to its original natural level and re-seeded as per BLM specifications.

11. Surface Ownership:

- A. The surface is owned by the U.S. Government and is administered by the Bureau of Land Management. The surface is multiple uses with the primary uses of the region for grazing of livestock and the production of oil and gas.
- B. The surface tenant for this site is Olane Caswell, 1702 Gillham, Brownfield, TX 79316.
- C. The proposed road routes and surface location will be restored as directed by the BLM.

12. Other Information:

- A. The area around the well site is grassland and the topsoil is sandy. The vegetation is moderately sparse with native prairie grasses, some mesquite and shinnery oak. No wildlife was observed but it is likely that mule deer, rabbits, coyotes and rodents traverse the area.
- B. There is no permanent or live water in the immediate area.
- C. There are no dwellings within 2 miles of this location.
- D. If needed, a Cultural Resources Examination is being prepared by Southern New Mexico Archaeological Services, Inc. P.O. Box 1, Bent New Mexico, 88314, phone # 505-671-4797 and the results will be forwarded to your office in the near future. Otherwise, **COG will be participating in the Permian Basin MOA Program.**

13. Bond Coverage: *RA*

STATEWIDE NMB
Bond Coverage is ~~Nationwide~~ Bond # 000215

14. Lessee's and Operator's Representative:

The COG Operating LLC representative responsible for assuring compliance with the surface use plan is as follows:

John Coffman,
Drilling Superintendent
COG Operating LLC
550 W. Texas, Suite 1300
Midland, TX 79701
Phone (432) 683-7443 (office)
(432) 631-9762 (cell)

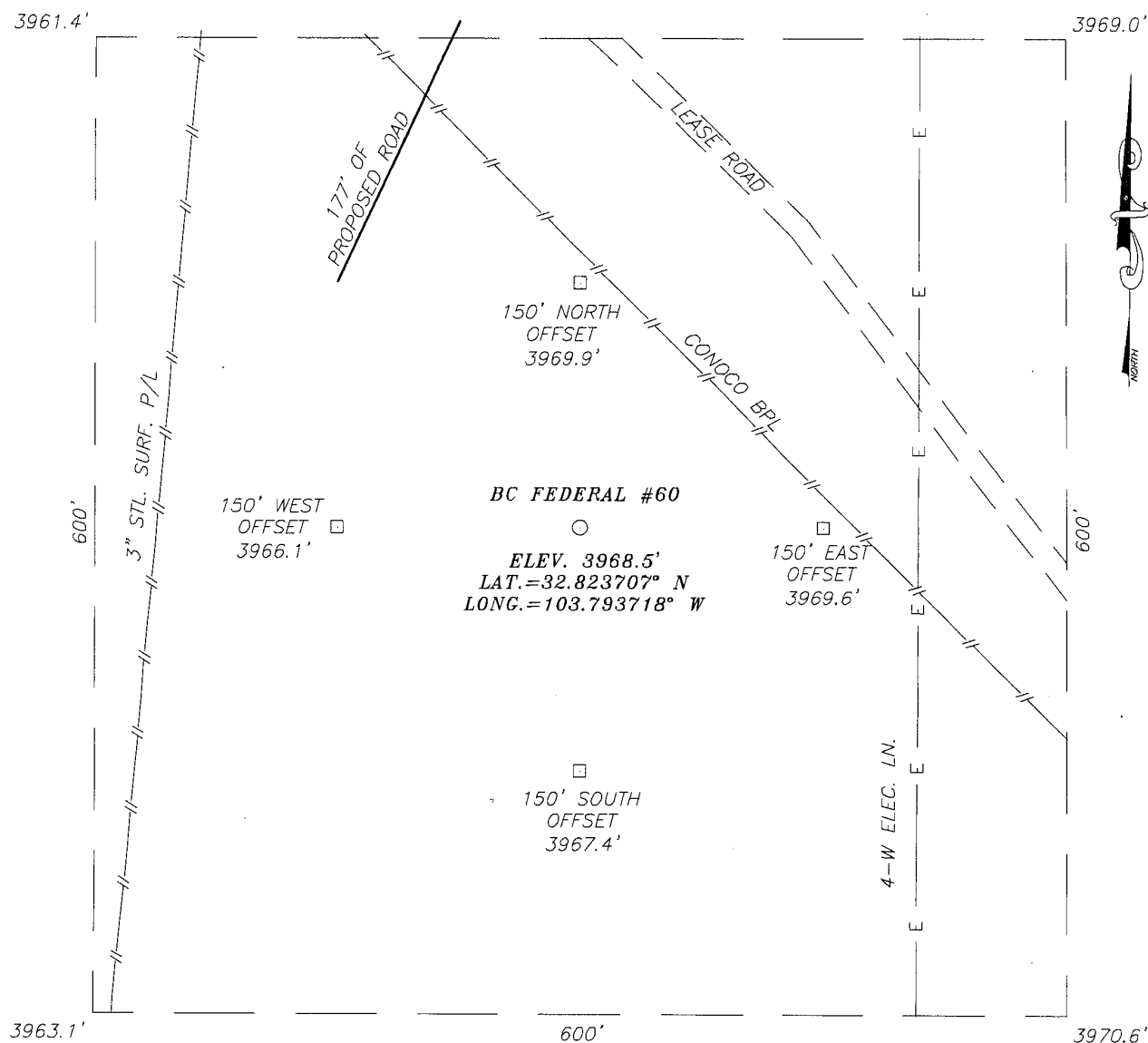
Erick Nelson.
Division Operations Manager
COG Operating LLC
550 W. Texas, Suite 1300
Midland, TX 79701
Phone (505) 746-2210 (office)
(432) 238-7591 (cell)

I hereby certify that I, or persons under my direct supervision, have inspected the drill site and access road proposed herein; that I am familiar with the conditions that presently exist; that I have full knowledge of State and Federal laws applicable to this operation; that the statements made in this APD package are, to the best of my knowledge, true and correct; and that the work associated with the operations proposed herein will be performed in conformity with this APD package and the terms and conditions under which it is approved. I also certify that I, or COG Operating, LLC, am responsible for the operations conducted under this application. These statements are subject to the provisions of 18 U.S.C. 1001 for the filing of false statements. Executed this 15th day of November, 2010.

Signed: Carl Bird

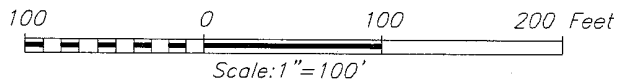
Printed Name: Carl Bird
Position: Drilling Engineer
Address: 550 W. Texas, Suite 1300, Midland, Texas 79701
Telephone: (432) 683-7443
Field Representative (if not above signatory): Same
E-mail: cbird@conchoresources.com

SECTION 20, TOWNSHIP 17 SOUTH, RANGE 32 EAST, N.M.P.M.,
 LEA COUNTY, NEW MEXICO



DIRECTIONS TO LOCATION

FROM THE INTERSECTION OF U.S. HWY. #82 AND EDDY CO. RD. #224 (RIPPLE ROAD), GO SOUTHEAST APPROX. 1.0 MILES. VEER RIGHT AND GO SOUTH APPROX. 0.4 MILES. TURN LEFT AND GO EAST APPROX. 1.1 MILES. TURN LEFT AND GO NORTH-NORTHEAST APPROX. 0.25 MILES. THE LOCATION IS APPROX. 260 FEET NORTHWEST OF LEASE ROAD.



COG OPERATING, LLC

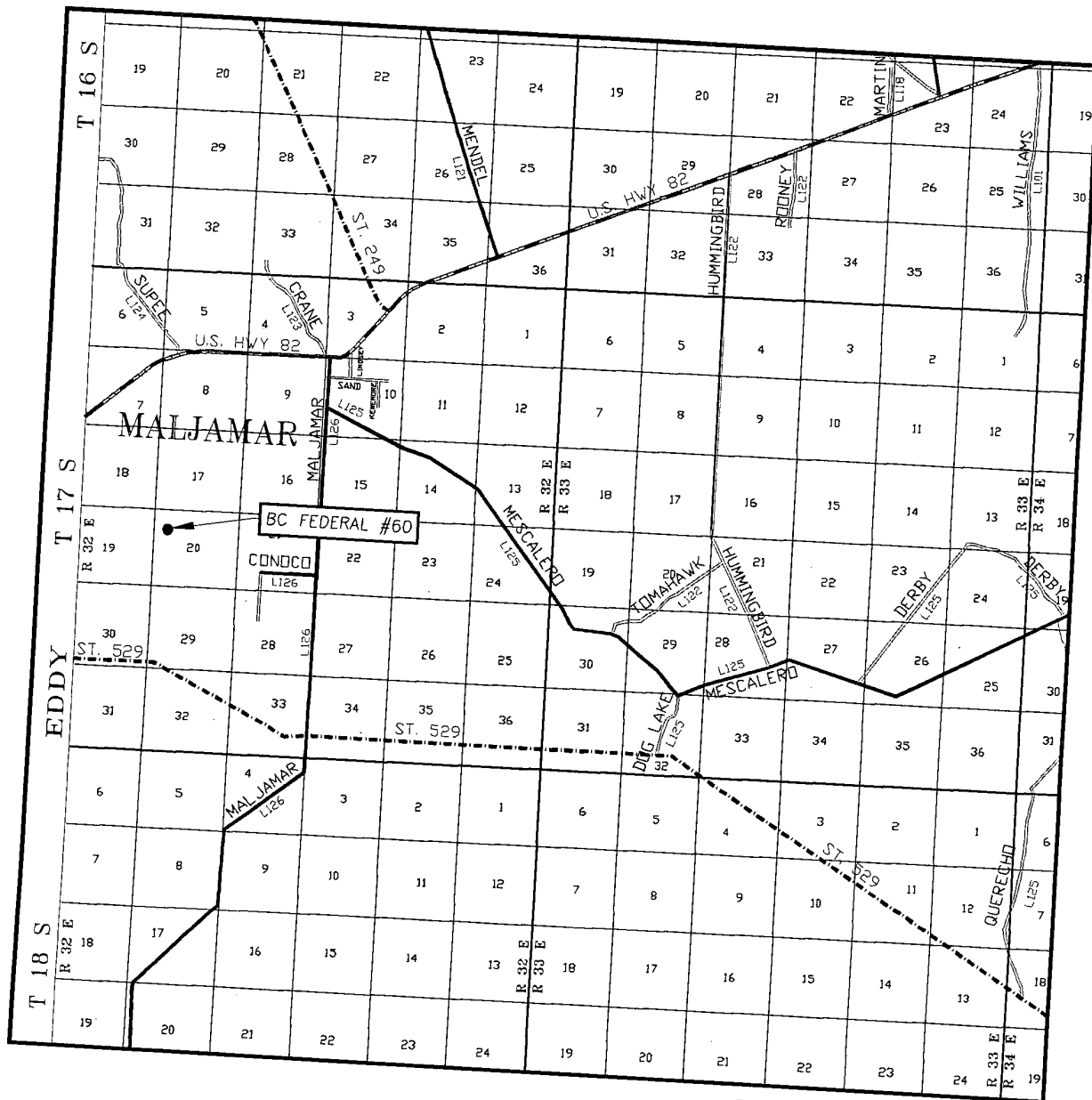
BC FEDERAL #60 WELL
 LOCATED 1305 FEET FROM THE NORTH LINE
 AND 915 FEET FROM THE WEST LINE OF SECTION 20,
 TOWNSHIP 17 SOUTH, RANGE 32 EAST, N.M.P.M.,
 LEA COUNTY, NEW MEXICO.

Survey Date: 10/18/10	Sheet 1 of 1 Sheets
W.O. Number: 10.11.0938	Dr By: LA
Date: 10/27/10	10110938
	Scale: 1"=100'



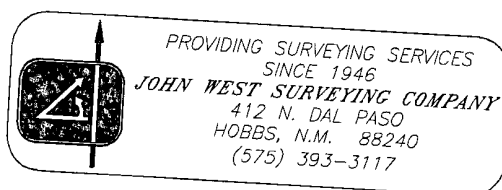
PROVIDING SURVEYING SERVICES
 SINCE 1946
JOHN WEST SURVEYING COMPANY
 412 N. DAL PASO
 HOBBS, N.M. 88240
 (575) 393-3117

VICINITY MAP

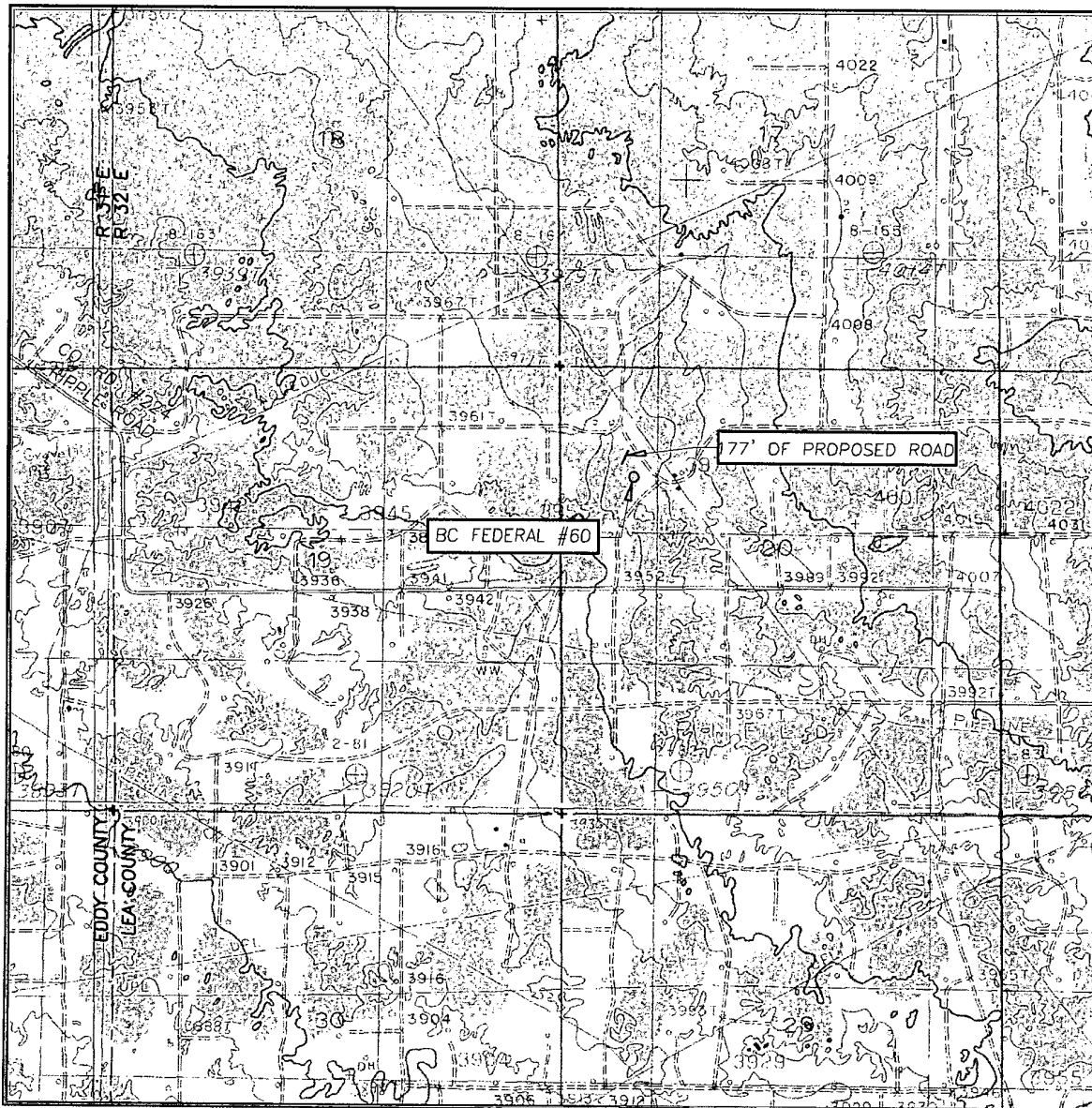


SCALE: 1" = 2 MILES

SEC. 20 TWP. 17-S RGE. 32-E
 SURVEY N.M.P.M.
 COUNTY LEA STATE NEW MEXICO
 DESCRIPTION 1305' FNL & 915' FWL
 ELEVATION 3968'
 OPERATOR COG OPERATING, LLC
 LEASE BC FEDERAL



LOCATION VERIFICATION MAP



SCALE: 1" = 2000'

CONTOUR INTERVAL:
MALJAMAR, N.M. - 10'

SEC. 20 TWP. 17-S RGE. 32-E

SURVEY _____ N.M.P.M.

COUNTY LEA STATE NEW MEXICO

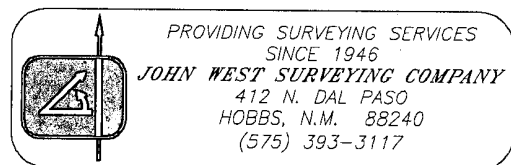
DESCRIPTION 1305' FNL & 915' FWL

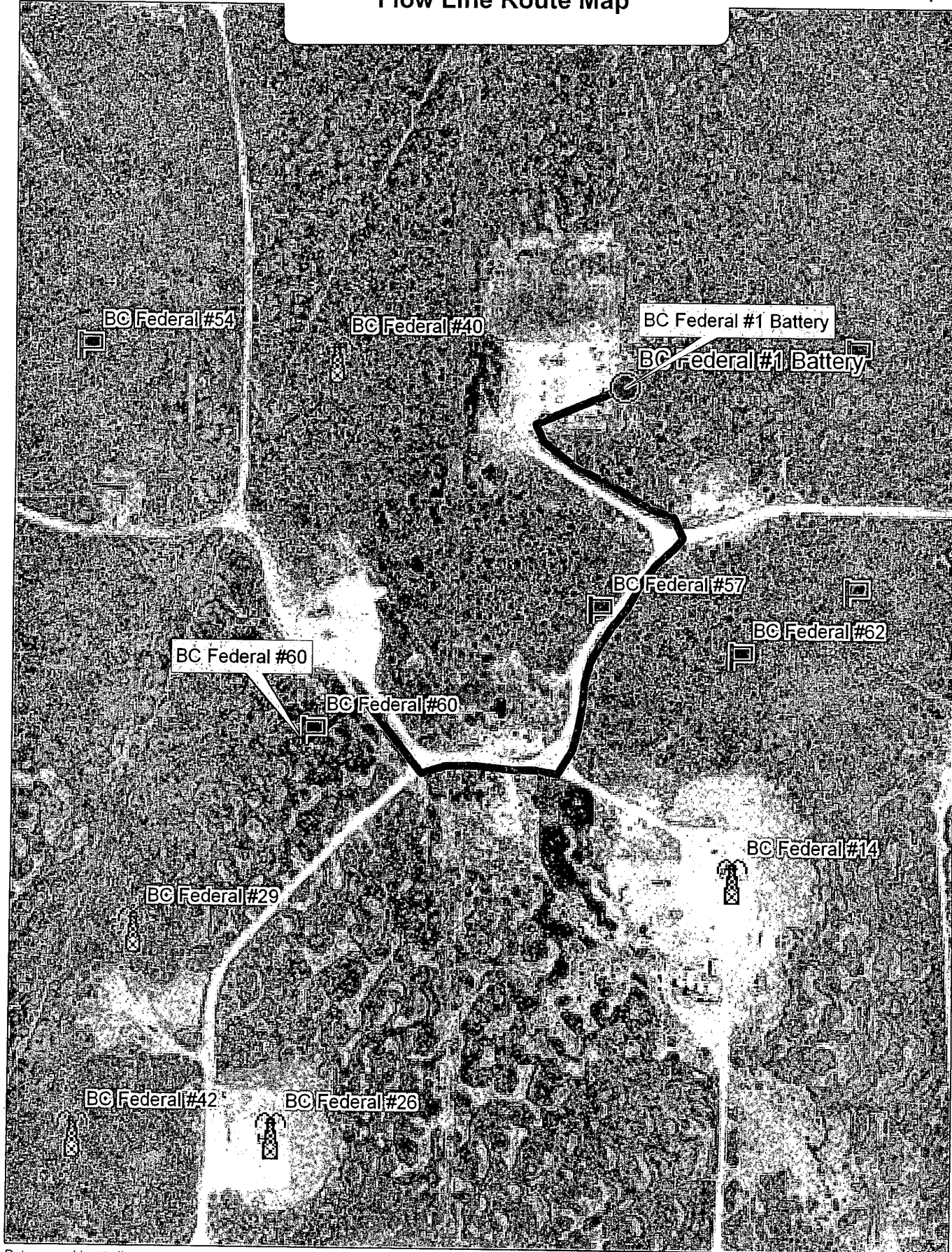
ELEVATION 3968'

OPERATOR COG OPERATING, LLC

LEASE BC FEDERAL

U.S.G.S. TOPOGRAPHIC MAP
MALJAMAR, N.M.

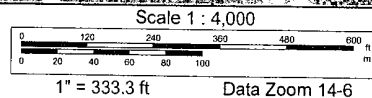




Data use subject to license.

© DeLorme. XMap® 7.

www.delorme.com



Offset Wells to BC Federal #60

API#	Operator	County	Legal	Lease	Well#	Date Issued	Permitted Depth	Permit TVD	Images	Doc	Total Depth	Well Type	Well Status	Permit#
30-025-39928	COG OPERATING LLC	LEA	S:20, T:17S, R:32E	GC FEDERAL	42	9/30/2010	6,900		Yes	link	6,900	PO	Active Permit	TEMP1861612420
30-025-39913	COG OPERATING LLC	LEA	S:20, T:17S, R:32E	BC FEDERAL	65	9/17/2010	7,000		Yes	link	7,000	PO	Active Permit	TEMP342624690
30-025-39856	COG OPERATING LLC	LEA	S:20, T:17S, R:32E	BC FEDERAL	58	7/29/2010	7,000		Yes	link	7,000	PO	Active Permit	TEMP778848719
30-025-39857	COG OPERATING LLC	LEA	S:20, T:17S, R:32E	BC FEDERAL	63	7/29/2010	7,000		Yes	link	7,000	PO	Active Permit	TEMP1892833057
30-025-39858	COG OPERATING LLC	LEA	S:20, T:17S, R:32E	GC FEDERAL	43	7/29/2010	7,159	7,100	Yes	link	7,159	PO	Active Permit	TEMP1922643520
30-025-39697	COG OPERATING LLC	LEA	S:20, T:17S, R:32E	GC FEDERAL	37	2/11/2010	7,127	7,100	Yes	link	7,127	PO	Active Permit	TEMP2071368208
30-025-39626	COG OPERATING LLC	LEA	S:20, T:17S, R:32E	GC FEDERAL	40	12/24/2009	7,144	7,100	Yes	link	7,144	PO	Active Permit	TEMP562800386
30-025-39624	COG OPERATING LLC	LEA	S:19, T:17S, R:32E	BC FEDERAL	52	12/22/2009	7,117	7,160	Yes	link	7,117	PO	Active Permit	TEMP281219397
30-025-39625	COG OPERATING LLC	LEA	S:20, T:17S, R:32E	BC FEDERAL	54	12/22/2009	7,000		Yes	link	7,000	PO	Active Permit	TEMP1757160506
30-025-39612	COG OPERATING LLC	LEA	S:20, T:17S, R:32E	BC FEDERAL	53	12/4/2009	7,100		Yes	link	7,100	PO	Active Permit	TEMP914263798
30-025-39544	COG OPERATING LLC	LEA	S:20, T:17S, R:32E	BC FEDERAL	55	10/2/2009	7,000		Yes	link	7,000	PO	Active Permit	TEMP704627628
30-025-39543	COG OPERATING LLC	LEA	S:19, T:17S, R:32E	BC FEDERAL	47	10/2/2009	6,900		Yes	link	6,900	PO	Active Permit	TEMP678628988
30-025-39515	COG OPERATING LLC	LEA	S:20, T:17S, R:32E	GC FEDERAL	39	8/23/2009	7,000		Yes	link	7,020	O	Active Permit	TEMP1263446901
30-025-39611	COG OPERATING LLC	LEA	S:19, T:17S, R:32E	BC FEDERAL	46	8/14/2009	3,967		Yes	link	3,967	PO	Active Permit	TEMP269250618
30-025-39497	COG OPERATING LLC	LEA	S:20, T:17S, R:32E	BC FEDERAL	57	8/12/2009	7,000		Yes	link	7,000	PO	Active Permit	TEMP913062814
30-025-39498	COG OPERATING LLC	LEA	S:19, T:17S, R:32E	GC FEDERAL	54	8/12/2009	7,100		Yes	link	7,100	PO	Active Permit	TEMP1680738159
30-025-39476	COG OPERATING LLC	LEA	S:20, T:17S, R:32E	GC FEDERAL	63	7/23/2009	7,019	7,000	Yes	link	7,019	PO	Active Permit	TEMP1850343327
30-025-39472	COG OPERATING LLC	LEA	S:20, T:17S, R:32E	GC FEDERAL	41	7/22/2009	7,100		Yes	link	7,123	O	Active Permit	TEMP254749392
30-025-39475	COG OPERATING LLC	LEA	S:20, T:17S, R:32E	GC FEDERAL	62	7/22/2009	7,137	7,100	Yes	link	7,137	PO	Active Permit	TEMP1481001204
30-025-39471	COG OPERATING LLC	LEA	S:20, T:17S, R:32E	GC FEDERAL	38	7/22/2009	7,138	7,100	Yes	link	7,129	O	Active Permit	TEMP962979159
30-025-39469	COG OPERATING LLC	LEA	S:19, T:17S, R:32E	BC FEDERAL	51	7/20/2009	6,900		Yes	link	6,900	PO	Active Permit	TEMP423382244
30-025-39468	COG OPERATING LLC	LEA	S:19, T:17S, R:32E	BC FEDERAL	50	7/17/2009	6,900		Yes	link	6,920	O	Active Permit	TEMP206526192
30-025-39467	COG OPERATING LLC	LEA	S:19, T:17S, R:32E	BC FEDERAL	49	7/16/2009	7,037	7,000	Yes	link	7,037	PO	Active Permit	TEMP773835908
30-025-39474	COG OPERATING LLC	LEA	S:19, T:17S, R:32E	GC FEDERAL	56	7/16/2009	7,030	7,000	Yes	link	7,030	PO	Active Permit	TEMP773940142
30-025-39416	COG OPERATING LLC	LEA	S:20, T:17S, R:32E	BC FEDERAL	42	5/20/2009	7,000		Yes	link	7,006	O	Active Permit	TEMP1193997056
30-025-39415	COG OPERATING LLC	LEA	S:20, T:17S, R:32E	BC FEDERAL	41	5/20/2009	7,013	7,000	Yes	link	7,050	O	Active Permit	TEMP2046430932

30-025-39414	COG OPERATING LLC	LEA	S:20, T:17S, R:32E	BC FEDERAL	40	5/19/2009	7,000		Yes	link	7,036	O	Active Permit	TEMP720222835
30-025-39422	COG OPERATING LLC	LEA	S:19, T:17S, R:32E	G C FEDERAL	37	5/19/2009	6,900		Yes	link	6,925	O	Active Permit	TEMP1588474770
30-025-39421	COG OPERATING LLC	LEA	S:19, T:17S, R:32E	G C FEDERAL	35	5/19/2009	6,900		Yes	link	6,900	PO	Active Permit	TEMP133600763
30-025-39418	COG OPERATING LLC	LEA	S:19, T:17S, R:32E	BC FEDERAL	44	5/19/2009	7,000		Yes	link	7,000	PO	Active Permit	TEMP962267815
30-025-39419	COG OPERATING LLC	LEA	S:19, T:17S, R:32E	BC FEDERAL	45	5/19/2009	7,013	7,000	Yes	link	7,034	O	Active Permit	TEMP1061129939
30-025-39417	COG OPERATING LLC	LEA	S:20, T:17S, R:32E	BC FEDERAL	43	5/19/2009	7,000		Yes	link	7,010	O	Active Permit	TEMP960606207
30-025-39470	COG OPERATING LLC	LEA	S:20, T:17S, R:32E	BC FEDERAL	59	5/7/2009	7,100		Yes	link	7,100	PO	Active Permit	TEMP437053396
30-025-39473	COG OPERATING LLC	LEA	S:20, T:17S, R:32E	G C FEDERAL	45	3/6/2009	7,127	7,100	Yes	link	7,134	O	Active Permit	TEMP1610221069
30-025-39269	COG OPERATING LLC	LEA	S:20, T:17S, R:32E	G C FEDERAL	23	11/17/2008	7,029	7,000	Yes	link	7,035	O	Active Permit	TEMP1650840424
30-025-39272	COG OPERATING LLC	LEA	S:20, T:17S, R:32E	G C FEDERAL	30	11/17/2008	7,100		Yes	link	7,016	O	Active Permit	TEMP1861288742
30-025-39267	COG OPERATING LLC	LEA	S:20, T:17S, R:32E	G C FEDERAL	21	11/17/2008	7,000		Yes	link	7,038	O	Active Permit	TEMP457092114
30-025-39270	COG OPERATING LLC	LEA	S:20, T:17S, R:32E	G C FEDERAL	32	11/17/2008	7,121	7,100	Yes	link	7,136	O	Active Permit	TEMP647835779
30-025-39268	COG OPERATING LLC	LEA	S:20, T:17S, R:32E	G C FEDERAL	22	11/17/2008	7,000		Yes	link	7,015	O	Active Permit	TEMP486122460
30-025-39264	COG OPERATING LLC	LEA	S:20, T:17S, R:32E	G C FEDERAL	27	11/13/2008	7,100		Yes	link	7,103	O	Active Permit	TEMP560444403
30-025-39266	COG OPERATING LLC	LEA	S:20, T:17S, R:32E	G C FEDERAL	31	11/13/2008	7,100		Yes	link	7,123	O	Active Permit	TEMP1435730061
30-025-39262	COG OPERATING LLC	LEA	S:20, T:17S, R:32E	G C FEDERAL	24	11/13/2008	7,027	7,000	Yes	link	7,045	O	Active Permit	TEMP106440933
30-025-39261	COG OPERATING LLC	LEA	S:20, T:17S, R:32E	G C FEDERAL	20	11/13/2008	7,000		Yes	link	7,020	O	Active Permit	TEMP915113969
30-025-39263	COG OPERATING LLC	LEA	S:20, T:17S, R:32E	G C FEDERAL	25	11/13/2008	7,000		Yes	link	7,010	O	Active Permit	TEMP1396235185
30-025-39265	COG OPERATING LLC	LEA	S:20, T:17S, R:32E	G C FEDERAL	29	11/13/2008	7,120	7,100	Yes	link	7,114	O	Active Permit	TEMP1070757344
30-025-39282	COG OPERATING LLC	LEA	S:20, T:17S, R:32E	G C FEDERAL	26	11/13/2008	7,100		Yes	link	7,035	O	Active Permit	TEMP1901374924
30-025-39323	COG OPERATING LLC	LEA	S:20, T:17S, R:32E	G C FEDERAL	28	11/13/2008	7,100		Yes	link	7,100	PO	Active Permit	TEMP579827007
30-025-39162	COG OPERATING LLC	LEA	S:19, T:17S, R:32E	G C FEDERAL	19	8/22/2008	7,100		Yes	link	7,022	O	Active Permit	TEMP732619990
30-025-39113	COG. OPERATING, L.L.C. or COG OPERATING LLC	LEA	S:19, T:17S, R:32E	G C FEDERAL	18	8/19/2008	7,000		Yes	link	7,050	O	Active Permit	TEMP1121428476
30-025-39109	COG. OPERATING, L.L.C. or COG OPERATING LLC	LEA	S:19, T:17S, R:32E	G C FEDERAL	13	8/19/2008	6,900		Yes	link	6,922	O	Active Permit	TEMP937620837
30-025-39111	COG OPERATING L.L.C. or COG OPERATING LLC	LEA	S:19, T:17S, R:32E	G C FEDERAL	15	8/19/2008	7,000		Yes	link	7,037	O	Active Permit	TEMP734673321
30-025-39110	COG OPERATING L.L.C. or COG OPERATING LLC	LEA	S:19, T:17S, R:32E	G C FEDERAL	14	8/19/2008	6,900		Yes	link	7,025	O	Active Permit	TEMP1323695931
	COG OPERATING													

30-025-39107	L L C or COG OPERATING LLC	LEA	S:21, T:17S, R:32E	M C FEDERAL	35	8/8/2008	7,022	7,000	Yes	link	7,050	O	Active Permit	TEMP1595953344
30-025-38993	COG OPERATING LLC	LEA	S:19, T:17S, R:32E	G C FEDERAL	10	6/17/2008	6,800		Yes	link	6,805	O	Active Permit	TEMP1896878906
30-025-38992	COG OPERATING LLC	LEA	S:19, T:17S, R:32E	BC FEDERAL	36	6/13/2008	6,800		Yes	link	6,918	O	Active Permit	TEMP1125053629
30-025-38994	COG OPERATING LLC	LEA	S:19, T:17S, R:32E	G C FEDERAL	11	6/13/2008	6,800		Yes	link	6,817	O	Active Permit	TEMP1116399800
30-025-38842	COG OPERATING LLC	LEA	S:19, T:17S, R:32E	GC FEDERAL	8	4/1/2008	7,250		Yes	link	6,815	O	Active Permit	TEMP1020968955
30-025-38904	COG OPERATING LLC	LEA	S:19, T:17S, R:32E	BC FEDERAL	20	3/26/2008	7,200		Yes	link	7,020	O	Active Permit	TEMP121098942
30-025-38814	COG OPERATING LLC	LEA	S:20, T:17S, R:32E	BC FEDERAL	29	3/7/2008	7,200		Yes	link	7,041	O	Active Permit	TEMP741824707
30-025-38741	COG OPERATING LLC	LEA	S:19, T:17S, R:32E	BC FEDERAL	22	2/2/2008	7,200		Yes	link	7,040	O	Active Permit	TEMP1958266845
30-025-38742	COG OPERATING LLC	LEA	S:19, T:17S, R:32E	BC FEDERAL	23	2/1/2008	7,250		Yes	link	-7,250	PO	Active Permit	TEMP1783345657
30-025-38743	COG OPERATING LLC	LEA	S:19, T:17S, R:32E	BC FEDERAL	24	2/1/2008	7,200		Yes	link	6,926	O	Active Permit	TEMP2120580483
30-025-38744	COG OPERATING LLC	LEA	S:20, T:17S, R:32E	BC FEDERAL	25	2/1/2008	7,250		Yes	link	7,024	O	Active Permit	TEMP87324888
30-025-38745	COG OPERATING LLC	LEA	S:20, T:17S, R:32E	BC FEDERAL	26	2/1/2008	7,250		Yes	link	7,000	O	Active Permit	TEMP2102159644
30-025-38746	COG OPERATING LLC	LEA	S:20, T:17S, R:32E	BC FEDERAL	28	2/1/2008	7,300		Yes	link	7,033	O	Active Permit	TEMP1634582970
30-025-38742	COG OPERATING LLC	LEA	S:19, T:17S, R:32E	BC FEDERAL	023	2/1/2008	7,250		Yes	link	7,250	PO	Active Permit	TEMP161962920
30-025-38724	COG OPERATING LLC	LEA	S:19, T:17S, R:32E	BC FEDERAL	16	1/25/2008	7,200		Yes	link	7,200	PO	Active Permit	TEMP331256724
30-025-38726	COG OPERATING LLC	LEA	S:19, T:17S, R:32E	BC FEDERAL	21	1/25/2008	7,200		Yes	link	7,200	PO	Active Permit	TEMP312664015
30-025-38727	COG OPERATING LLC	LEA	S:20, T:17S, R:32E	BC FEDERAL	27	1/25/2008	7,300		Yes	link	7,300	PO	Active Permit	TEMP691287581
30-025-38713	COG OPERATING LLC	LEA	S:20, T:17S, R:32E	BC FEDERAL	31	1/21/2008	7,200		Yes	link	7,025	O	Active Permit	TEMP1749808713
30-025-38714	COG OPERATING LLC	LEA	S:20, T:17S, R:32E	BC FEDERAL	33	1/21/2008	7,200		Yes	link	7,200	PO	Active Permit	TEMP1397188814
30-025-38829	COG OPERATING LLC	LEA	S:20, T:17S, R:32E	BC FEDERAL	32	1/21/2008	7,200		Yes	link	6,900	O	Active Permit	TEMP99021850
30-025-38539	COG OPERATING LLC	LEA	S:20, T:17S, R:32E	BC FEDERAL	15	9/5/2007	7,000		Yes	link	7,015	O	Active Permit	TEMP1141514866
30-025-38545	COG OPERATING LLC	LEA	S:20, T:17S, R:32E	GC FEDERAL	6	9/3/2007	7,100		Yes	link	7,100	PO	Active Permit	TEMP1290772446
30-025-38366	COG OPERATING LLC	LEA	S:20, T:17S, R:32E	BC FEDERAL	14	3/29/2007	7,000		Yes	link	6,985	O	Active Permit	TEMP889433513
30-025-38164	COG OPERATING LLC	LEA	S:19, T:17S, R:32E	BC FEDERAL	013	10/31/2006	6,700		No	link	6,700	O	Active Permit	TEMP1135781705
30-025-36194	MACK ENERGY CORPORATION or MACK ENERGY CORP	LEA	S:20, T:17S, R:32E	BC FEDERAL	8	2/27/2003	7,000		No	link	7,060	O	Active	TEMP2050392132
30-025-36194	MACK ENERGY CORPORATION or MACK ENERGY CORP	LEA	S:20, T:17S, R:32E	BC FEDERAL	008	2/4/2003	7,000		No	link	7,060	O	Active	TEMP359362235
	MACK ENERGY			BC										

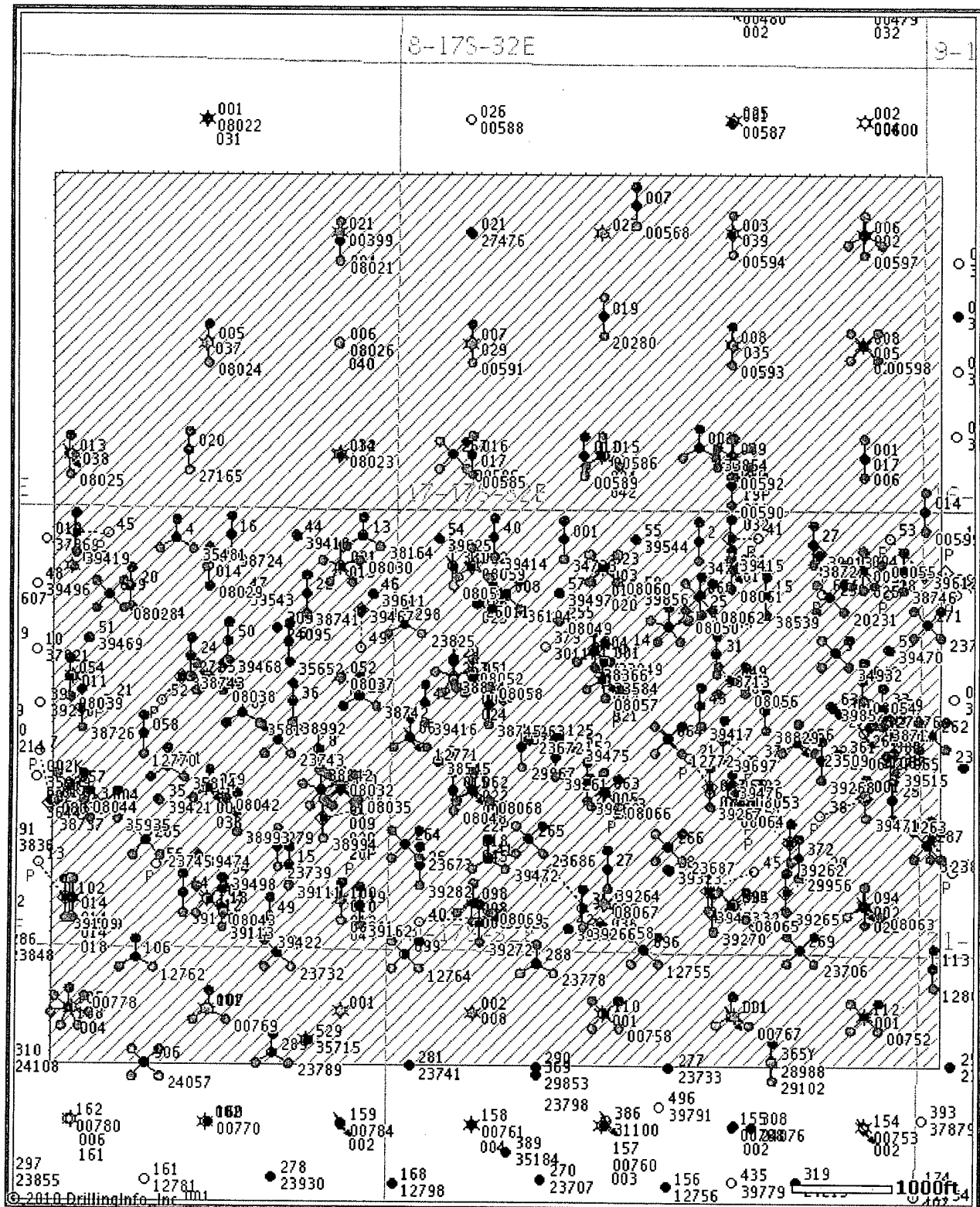
30-025-36194	CORP	LEA	S:20, T:17S, R:32E	FEDERAL	008	1/31/2003			No	link	7,060	O	Active	TEMP139286391
30-025-08065	CONOCOPHILLIPS COMPANY	LEA	S:20, T:17S, R:32E	MCA UNIT	095	1/1/2003	0		No	link	0	O	Active	TEMP1599864275
30-025-00596	CONOCOPHILLIPS COMPANY	LEA	S:17, T:17S, R:32E	MCA UNIT	267	1/1/2003	0		No	link	5,405	O	Pumping	TEMP1827047527
30-025-00598	CONOCOPHILLIPS COMPANY	LEA	S:17, T:17S, R:32E	MCA UNIT	008	1/1/2003	0		No	link	0	O	Pumping	TEMP1720856831
30-025-00767	CONOCOPHILLIPS COMPANY	LEA	S:29, T:17S, R:32E	MCA UNIT	111	1/1/2003	0		No	link	4,072	I	Injection Well	TEMP802741854
30-025-00769	CONOCOPHILLIPS COMPANY	LEA	S:30, T:17S, R:32E	MCA UNIT	107	1/1/2003			No	link		I	Plugged	TEMP910856295
30-025-00783	CONOCOPHILLIPS COMPANY	LEA	S:30, T:17S, R:32E	MCA UNIT	108	1/1/2003	0		No	link	3,963	O	Pumping	TEMP1641494456
30-025-08028	CONOCOPHILLIPS COMPANY	LEA	S:19, T:17S, R:32E	MCA UNIT	019	1/1/2003	0		No	link	0	O	Pumping	TEMP2019406653
30-025-08029	CONOCOPHILLIPS COMPANY	LEA	S:19, T:17S, R:32E	MCA UNIT	020	1/1/2003			No	link		PI	Temporarily Abandoned	TEMP2006236413
30-025-08030	CONOCOPHILLIPS COMPANY	LEA	S:19, T:17S, R:32E	MCA UNIT	021	1/1/2003	0		No	link	0	O	Pumping	TEMP2046635048
30-025-08035	CONOCOPHILLIPS COMPANY	LEA	S:19, T:17S, R:32E	MCA UNIT	060	1/1/2003	0		No	link	3,970	O	Shut-in	TEMP1803858492
30-025-08038	CONOCOPHILLIPS COMPANY	LEA	S:19, T:17S, R:32E	MCA UNIT	053	1/1/2003			No	link		PO	Temporarily Abandoned	TEMP1916205170
30-025-08039	CONOCOPHILLIPS COMPANY	LEA	S:19, T:17S, R:32E	MCA UNIT	054	1/1/2003			No	link		PI	Temporarily Abandoned	TEMP1941213849
30-025-08041	CONOCOPHILLIPS COMPANY	LEA	S:19, T:17S, R:32E	MCA UNIT	100	1/1/2003			No	link		PI	Injection Well	TEMP1020598508
30-025-08042	CONOCOPHILLIPS COMPANY	LEA	S:19, T:17S, R:32E	MCA UNIT	059	1/1/2003			No	link	3,984	I	Injection Well	TEMP982123618
30-025-08044	CONOCOPHILLIPS COMPANY	LEA	S:19, T:17S, R:32E	MCA UNIT	057	1/1/2003	0		No	link	3,974	PO	Temporarily Abandoned	TEMP1267992051
30-025-08050	CONOCOPHILLIPS COMPANY	LEA	S:20, T:17S, R:32E	MCA UNIT	257	1/1/2003			No	link	5,500	PO	Temporarily Abandoned	TEMP1473447964
30-025-08051	CONOCOPHILLIPS COMPANY	LEA	S:20, T:17S, R:32E	MCA UNIT	331	1/1/2003	0		No	link	5,370	I	Injection Well	TEMP1348789320
30-025-08052	CONOCOPHILLIPS COMPANY	LEA	S:20, T:17S, R:32E	MCA UNIT	253	1/1/2003			No	link	5,350	PO	Temporarily Abandoned	TEMP1722765251
30-025-08054	CONOCOPHILLIPS COMPANY	LEA	S:20, T:17S, R:32E	MCA UNIT	048	1/1/2003			No	link		PI	Injection Well	TEMP1585409894
30-025-08058	CONOCOPHILLIPS COMPANY	LEA	S:20, T:17S, R:32E	MCA UNIT	051	1/1/2003			No	link	0	O	Temporarily Abandoned	TEMP1559246968
30-025-08060	CONOCOPHILLIPS COMPANY	LEA	S:20, T:17S, R:32E	MCA UNIT	023	1/1/2003			No	link		O	Flowing	TEMP2067811561
30-025-08061	CONOCOPHILLIPS COMPANY	LEA	S:20, T:17S, R:32E	MCA UNIT	024	1/1/2003			No	link	0	I	Injection Well	TEMP2093974486
30-025-08062	CONOCOPHILLIPS COMPANY	LEA	S:20, T:17S, R:32E	MCA UNIT	066	1/1/2003	0		No	link	0	O	Pumping	TEMP1825035005
30-025-08063	CONOCOPHILLIPS COMPANY	LEA	S:20, T:17S, R:32E	MCA UNIT	094	1/1/2003	0		No	link	0	I	Injection Well	TEMP1851197931
30-025-12579	CONOCOPHILLIPS COMPANY	LEA	S:19, T:17S, R:32E	MCA UNIT	102	1/1/2003			No	link		PI	Injection Well	TEMP1574563471
30-025-12755	CONOCOPHILLIPS COMPANY	LEA	S:20, T:17S, R:32E	MCA UNIT	096	1/1/2003	0		No	link	4,048	O	Active	TEMP1529221230
30-025-12762	CONOCOPHILLIPS COMPANY	LEA	S:30, T:17S, R:32E	MCA UNIT	106	1/1/2003			No	link		PI	Injection Well	TEMP1503058305
	CONOCOPHILLIPS													

30-025-12764	COMPANY	LEA	S:19, T:17S, R:32E	MCA UNIT	099	1/1/2003			No	link		PO	Temporarily Abandoned	TEMP1733522896
30-025-12771	CONOCOPHILLIPS COMPANY	LEA	S:20, T:17S, R:32E	MCA UNIT	061	1/1/2003			No	link	4,024	I	Injection Well	TEMP1593089547
30-025-12772	CONOCOPHILLIPS COMPANY	LEA	S:20, T:17S, R:32E	MCA UNIT	064	1/1/2003			No	link		O	Plugged and Abandoned	TEMP1960909496
30-025-12804	CONOCOPHILLIPS COMPANY	LEA	S:28, T:17S, R:32E	MCA UNIT	113	1/1/2003	0		No	link	4,072	O	Pumping	TEMP955560620
30-025-23673	CONOCOPHILLIPS COMPANY	LEA	S:19, T:17S, R:32E	MCA UNIT	264	1/1/2003	0		No	link	0	O	Active	TEMP180602882
30-025-23686	CONOCOPHILLIPS COMPANY	LEA	S:20, T:17S, R:32E	MCA UNIT	265	1/1/2003	0		No	link	0	O	Pumping	TEMP187217066
30-025-23687	CONOCOPHILLIPS COMPANY	LEA	S:20, T:17S, R:32E	MCA UNIT	266	1/1/2003	0		No	link	0	O	Active	TEMP44090476
30-025-23706	CONOCOPHILLIPS COMPANY	LEA	S:20, T:17S, R:32E	MCA UNIT	269	1/1/2003	0		No	link	0	O	Pumping	TEMP299178996
30-025-23715	CONOCOPHILLIPS COMPANY	LEA	S:20, T:17S, R:32E	MCA UNIT	271	1/1/2003			No	link	4,121	O	Pumping	TEMP232617437
30-025-23732	CONOCOPHILLIPS COMPANY	LEA	S:19, T:17S, R:32E	MCA UNIT	276	1/1/2003	0		No	link	4,025	O	Pumping	TEMP2132231549
30-025-23743	CONOCOPHILLIPS COMPANY	LEA	S:19, T:17S, R:32E	MCA UNIT	283	1/1/2003			No	link	4,075	O	Pumping	TEMP1929853628
30-025-23745	CONOCOPHILLIPS COMPANY	LEA	S:19, T:17S, R:32E	MCA UNIT	285	1/1/2003	0		No	link	4,060	O	Pumping	TEMP2068747981
30-025-23789	CONOCOPHILLIPS COMPANY	LEA	S:30, T:17S, R:32E	MCA UNIT	289	1/1/2003			No	link	4,025	PO	Temporarily Abandoned	TEMP1799423750
30-025-23807	CONOCOPHILLIPS COMPANY	LEA	S:20, T:17S, R:32E	MCA UNIT	287	1/1/2003			No	link	4,120	O	Active	TEMP1581655873
30-025-23825	CONOCOPHILLIPS COMPANY	LEA	S:19, T:17S, R:32E	MCA UNIT	298	1/1/2003			No	link	4,082	PI	Injection Well	TEMP1384388722
30-025-24057	CONOCOPHILLIPS COMPANY	LEA	S:30, T:17S, R:32E	MCA UNIT	306	1/1/2003	0		No	link	4,020	O	Pumping	TEMP1968052804
30-025-29102	CONOCOPHILLIPS COMPANY	LEA	S:29, T:17S, R:32E	MCA UNIT	365Y	1/1/2003	0		No	link	2,110	O	Pumping	TEMP480982980
30-025-29956	CONOCOPHILLIPS COMPANY	LEA	S:20, T:17S, R:32E	MCA UNIT	372	1/1/2003	0		No	link	4,301	O	Pumping	TEMP368157842
30-025-29967	CONOCOPHILLIPS COMPANY	LEA	S:20, T:17S, R:32E	MCA UNIT	374	1/1/2003	0		No	link	4,200	O	Active	TEMP517825164
30-025-00589	CONOCOPHILLIPS COMPANY	LEA	S:17, T:17S, R:32E	MITCHELL B	011	1/1/2003	0		No	link	5,382	O	Pumping	TEMP384332620
30-025-00590	CONOCOPHILLIPS COMPANY	LEA	S:17, T:17S, R:32E	MITCHELL B	010	1/1/2003	0		No	link	0	O	Pumping	TEMP410495545
30-025-08025	CONOCOPHILLIPS COMPANY	LEA	S:18, T:17S, R:32E	MITCHELL B	013	1/1/2003			No	link		I	Temporarily Abandoned	TEMP1717487559
30-025-08048	CONOCOPHILLIPS COMPANY	LEA	S:20, T:17S, R:32E	MITCHELL B	015	1/1/2003	0		No	link	0	O	Active	TEMP1743650484
30-025-27165	CONOCOPHILLIPS COMPANY	LEA	S:18, T:17S, R:32E	MITCHELL B	020	1/1/2003	0		No	link	4,200	O	Pumping	TEMP1854842916
30-025-33584	CONOCOPHILLIPS COMPANY	LEA	S:20, T:17S, R:32E	ELVIS	001	1/1/2003			No	link	13,900	O	Pumping	TEMP724908205
30-025-33854	CONOCOPHILLIPS COMPANY	LEA	S:17, T:17S, R:32E	ELVIS	002	1/1/2003			No	link	14,000	O	Pumping	TEMP751071130
30-025-33949	CONOCOPHILLIPS COMPANY	LEA	S:20, T:17S, R:32E	ELVIS	004	1/1/2003			No	link	12,100	O	Active	TEMP480592653
30-025-08055	CONOCOPHILLIPS COMPANY	LEA	S:20, T:17S, R:32E	MITCHELL A	004	1/1/2003			No	link	4,129	G	Temporarily Abandoned	TEMP607584505
	MACK ENERGY													

30-025-35935	CORPORATION or MACK ENERGY CORP	LEA	S:19, T:17S, R:32E	GC FEDERAL	004	5/3/2002			No	link	7,028	O	Active	TMP0000000012288
30-025-35935	MACK ENERGY CORP	LEA	S:19, T:17S, R:32E	GC FEDERAL	004	4/30/2002			No	link	7,028	O	Active	TEMP1031476489
30-025-35814	MACK ENERGY CORPORATION or MACK ENERGY CORP	LEA	S:19, T:17S, R:32E	GC FEDERAL	001	11/29/2001			No	link	7,085	O	Pumping	TEMP1642498006
30-025-35813	MACK ENERGY CORPORATION or MACK ENERGY CORP	LEA	S:19, T:17S, R:32E	BC FEDERAL	007	11/28/2001			No	link	6,590	O	Active	TEMP1734513133
30-025-35813	MACK ENERGY CORP	LEA	S:19, T:17S, R:32E	BC FEDERAL	007	10/31/2001			No	link	6,590	O	Active	TEMP1233775605
30-025-35814	MACK ENERGY CORP	LEA	S:19, T:17S, R:32E	GC FEDERAL	001	10/31/2001			No	link	7,085	O	Pumping	TEMP1143374938
30-025-35652	MACK ENERGY CORP	LEA	S:19, T:17S, R:32E	BC FEDERAL	6	8/2/2001	6,000		Yes	link	7,562	O	Pumping	TEMP1941188934
30-025-35481	MACK ENERGY CORP	LEA	S:19, T:17S, R:32E	BC FEDERAL	004	2/23/2001			No	link	5,600	O	Pumping	TEMP947828571
30-025-08057	CONOCO, INC.	LEA	S:20, T:17S, R:32E	MCA UNIT	050	5/3/2000			No	link		I	Temporarily Abandoned	TEMP1778985407
30-025-08066	CONOCO, INC.	LEA	S:20, T:17S, R:32E	MCA UNIT	063	4/27/2000			No	link	4,027	O	Temporarily Abandoned	TEMP1555061547
30-025-00758	CONOCO, INC.	LEA	S:29, T:17S, R:32E	MCA UNIT	110	4/24/2000			No	link		O	Temporarily Abandoned	TEMP572660046
30-025-34932	MACK ENERGY CORP	LEA	S:20, T:17S, R:32E	BC FEDERAL	003	1/13/2000			No	link	7,028	O	Pumping	TEMP932318355
30-025-34713	MACK ENERGY CORP	LEA	S:20, T:17S, R:32E	BC FEDERAL	002	9/22/1999			No	link	7,055	O	Pumping	TEMP1278714958
30-025-34733	MACK ENERGY CORP	LEA	S:20, T:17S, R:32E	BC FEDERAL	001	9/21/1999			No	link	5,900	O	Pumping	TEMP1514566034
30-025-08064	CONOCO, INC.	LEA	S:20, T:17S, R:32E	MCA UNIT	065	12/15/1998	0		No	link	0	I	Injection Well	TEMP1878250623
30-015-29152	DEVON ENERGY PRODUCTION COMPANY, LP	EDDY	S:20, T:17S, R:32E	TURNER B	125	3/24/1998			No	link		PO	Unknown	TEMP1678126835
30-025-35715	I & W INC	LEA	S:30, T:17S, R:32E	BRINE STATION	529	5/5/1997			No	link		G	Active	TEMP1206687960
30-025-08053	CONOCO, INC.	LEA	S:20, T:17S, R:32E	MCA UNIT	303	9/5/1996			No	link	13,965	I	Injection Well	TEMP1901720306
30-025-08056	CONOCO, INC.	LEA	S:20, T:17S, R:32E	MCA UNIT	049	8/17/1996	0		No	link	0	O	Pumping	TEMP2016375478
30-025-00752	CONOCO, INC.	LEA	S:29, T:17S, R:32E	MCA UNIT	112	8/14/1996			No	link	4,072	O	Pumping	TEMP1792314060
30-025-20231	CONOCO, INC.	LEA	S:20, T:17S, R:32E	MCA UNIT	258	7/25/1996			No	link	5,445	O	Pumping	TEMP1615228516
30-025-08032	CONOCO, INC.	LEA	S:19, T:17S, R:32E	MCA UNIT	259	7/23/1996			No	link		O	Pumping	TEMP940232805
30-025-08043	CONOCO, INC.	LEA	S:19, T:17S, R:32E	MCA UNIT	101	9/26/1995			No	link		O	Pumping	TEMP837120100
30-025-23660	CONOCO, INC.	LEA	S:21, T:17S, R:32E	MCA UNIT	262	9/14/1995			No	link	4,130	I	Pumping	TEMP566268744
30-025-00568	CONOCO, INC.	LEA	S:17, T:17S, R:32E	MCA UNIT	007	1/25/1990			No	link		O	Active	TEMP1865831748
30-025-00597	CONOCO, INC.	LEA	S:17, T:17S, R:32E	MCA UNIT	006	1/25/1990			No	link		O	Active	TEMP760110144
30-025-00591	CONOCO, INC.	LEA	S:17, T:17S, R:32E	MITCHELL B	007	10/25/1989			No	link	4,336	O	Active	TEMP964796559
30-025-00593	CONOCO, INC.	LEA	S:17, T:17S, R:32E	MITCHELL B	008	10/25/1989			No	link	4,200	O	Active	TEMP1067139766
30-025-08024	CONOCO, INC.	LEA	S:18, T:17S, R:32E	MITCHELL B	005	10/25/1989			No	link	4,200	O	Active	TEMP1226101238
30-025-12770	CONOCO, INC.	LEA	S:19, T:17S, R:32E	MCA UNIT	058	1/1/1970			No	link		O	Active	TEMP480077612
	STEVENS OPERATING CORPORATION or HANAGAN			PRE-										

30-025-26011	PETROLEUM CORP	LEA	S:20, T:17S, R:32E	ONGARD WELL	358	1/1/1970			No	link		PO	Active Permit	TEMP201405038
30-025-27476	STEVENS OPERATING CORPORATION or HANAGAN PETROLEUM CORP	LEA	S:17, T:17S, R:32E	PRE- ONGARD WELL	021	1/1/1970			No	link		PO	Active Permit	TEMP127421764

Offset Wells to BC Federal #60



© 2010 Drilling Info, Inc. All rights reserved. All data and information is provided "As Is" and subject to the [DI subscription agreement](#).