

30-025-40088 RECEIVED

COG Operating LLC

MAR 28 2011

HOBSOCD

Hydrogen Sulfide Drilling Operation Plan

I. HYDROGEN SULFIDE TRAINING

All personnel, whether regularly assigned, contracted, or employed on an unscheduled basis, will receive training from a qualified instructor in the following areas prior to commencing drilling operations on this well:

1. The hazards and characteristics of hydrogen sulfide (H₂S)
2. The proper use and maintenance of personal protective equipment and life support systems.
3. The proper use of H₂S detectors, alarms, warning systems, briefing areas, evacuation procedures, and prevailing winds.
4. The proper techniques for first aid and rescue procedures.

In addition, supervisory personnel will be trained in the following areas:

1. The effects of H₂S on metal components. If high tensile tubular are to be used, personnel will be trained in their special maintenance requirements.
2. Corrective action and shut-in procedures when drilling or reworking a well and blowout prevention and well control procedures.
3. The contents and requirements of the H₂S Drilling Operations Plan and Public Protection Plan.

There will be an initial training session just prior to encountering a known or probable H₂S zone (within 3 days or 500 feet) and weekly H₂S and well control drills for all personnel in each crew. The initial training session shall include a review of the site specific H₂S Drilling Operations Plan and the Public Protection Plan. **The concentrations of H₂S of wells in this area from surface to TD are low enough that a contingency plan is not required.**

II. H2S SAFETY EQUIPMENT AND SYSTEMS

Note: All H2S safety equipment and systems will be installed, tested, and operational when drilling reaches a depth of 500 feet above, or three days prior to penetrating the first zone containing or reasonable expected to contain H2S.

1. Well Control Equipment:

- A. Flare line.
- B. Choke manifold.
- C. Blind rams and pipe rams to accommodate all pipe sizes with properly sized closing unit.
- D. Auxiliary equipment may include if applicable: annular preventer & rotating head.

2. Protective equipment for essential personnel:

- A. Mark II Survive air 30-minute units located in the doghouse and at briefing areas, as indicated on well site diagram.

3. H2S detection and monitoring equipment:

- A. 1 portable H2S monitors positioned on location for best coverage and response. These units have warning lights and audible sirens when H2S levels of 20 PPM are reached.

4. Visual warning systems:

- A. Wind direction indicators as shown on well site diagram (Exhibit #8).
- B. Caution/Danger signs (Exhibit #7) shall be posted on roads providing direct access to location. Signs will be painted a high visibility yellow with black lettering of sufficient size to be readable at a reasonable distance from the immediate location. Bilingual signs will be used, when appropriate. See example attached.

5. Mud program:

- A. The mud program has been designed to minimize the volume of H2S circulated to surface. Proper mud weight, safe drilling practices, and the use of H2S scavengers will minimize hazards when penetrating H2S bearing zones.

6. Metallurgy:

- A. All drill strings, casings, tubing, wellhead, blowout preventer, drilling spool, kill lines, choke manifold and lines, and valves shall be suitable for H₂S service.
- B. All elastomers used for packing and seals shall be H₂S trim.

7. Communication:

- A. Radio communications in company vehicles including cellular telephone and 2-way radio.
- B. Land line (telephone) communication at Office.

8. Well testing:

- A. Drill stem testing will be performed with a minimum number of personnel in the immediate vicinity, which are necessary to safely and adequately conduct the test. The drill stem testing will be conducted during daylight hours and formation fluids will not be flowed to the surface. All drill-stem-testing operations conducted in an H₂S environment will use the closed chamber method of testing.
- B. There will be no drill stem testing.

EXHIBIT #7

WARNING
YOU ARE ENTERING AN H₂S
AUTHORIZED PERSONNEL ONLY

- 1. BEARDS OR CONTACT LENSES NOT ALLOWED
- 2. HARD HATS REQUIRED
- 3. SMOKING IN DESIGNATED AREAS ONLY
- 4. BE WIND CONSCIOUS AT ALL TIMES
- 5. CHECK WITH COG OPERATING FOREMAN AT

COG OPERATING LLC
1-432-683-7443
1-575-746-2010

EDDY COUNTY EMERGENCY NUMBERS

ARTESIA FIRE DEPT. 575-746-5050
ARTESIA POLICE DEPT. 575-746-5000
EDDY CO. SHERIFF DEPT. 575-746-9888

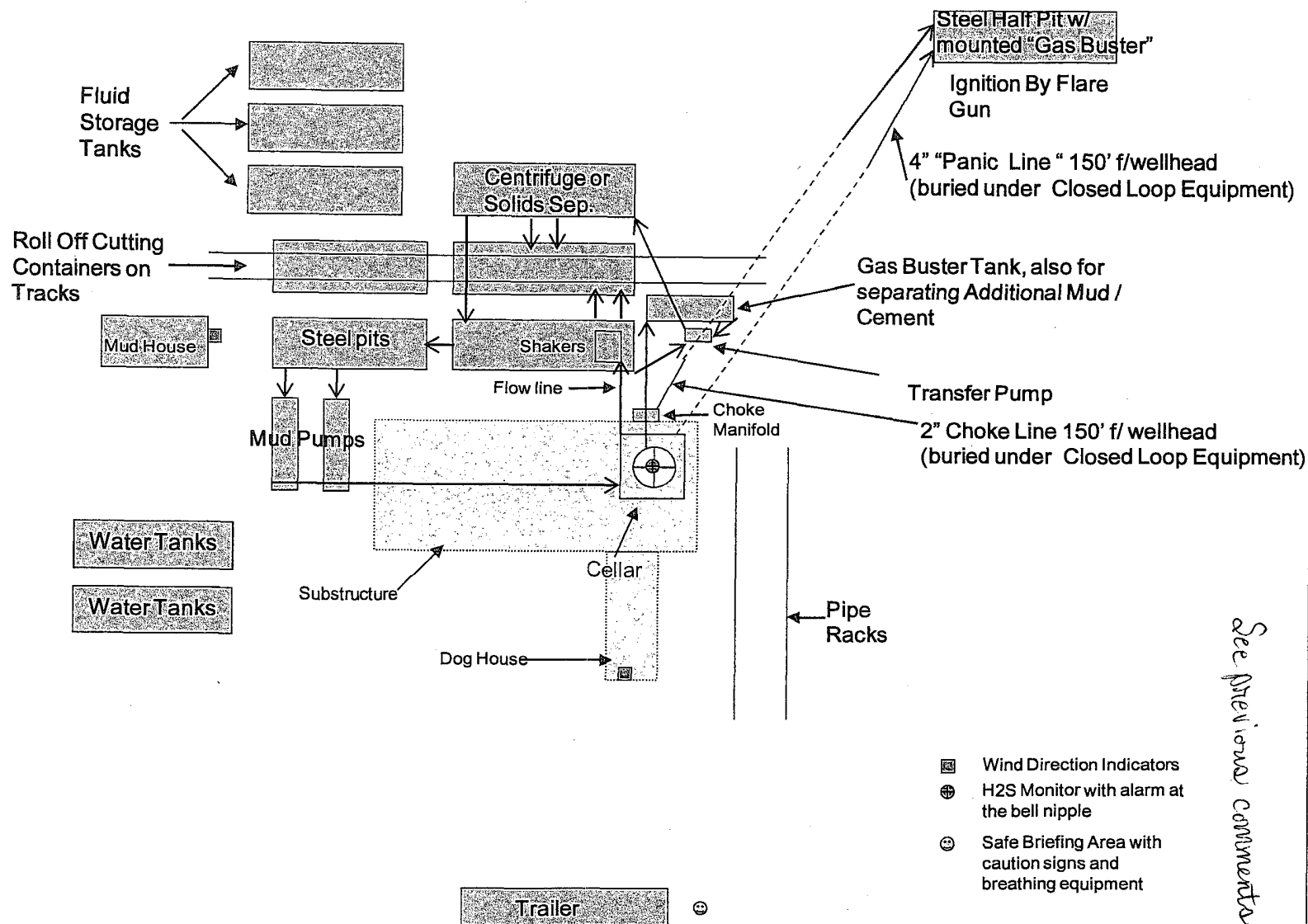
LEA COUNTY EMERGENCY NUMBERS

HOBBS FIRE DEPT. 575-397-9308
HOBBS POLICE DEPT. 575-397-9285
LEA CO. SHERIFF DEPT. 575-396-1196

COG Operating LLC

EXHIBIT 8

Drilling Location - H2S Safety Equipment Diagram



RECEIVED
MAR 28 2011
HOBBSOCD

SURFACE USE AND OPERATING PLAN

1. Existing & Proposed Access Roads

- A. The well site survey and elevation plat for the proposed well is shown in Exhibit #1. It was staked by John West Engineering, Hobbs, NM.
- B. All roads to the location are shown in the topographic map Exhibit #2. The existing lease roads are illustrated and are adequate for travel during drilling and production operations. Upgrading existing roads prior to drilling the well will be done where necessary.
- C. Directions to Location: From the intersection of Co. Rd. #L126 (Maljamar Road) and Co. Rd. #L126 (Conoco Road), go West on Conoco Road approx 2.0 miles. Turn Right & go North approx 0.5 miles. Veer Right & go Northeast approx 0.3 miles. This location stake is approx 350 feet South of Lease Road. See Vicinity Map, Exhibit #3.
- D. Routine grading and maintenance of existing roads will be conducted as necessary to maintain their condition as long as any operations continue on this lease. Roads will be maintained according to specifications in section 2A of this Surface Use and Operating Plan.

2. Proposed Access Road:

Exhibit #4 shows that 0' of new access road will be required for this location. If any road is required it will be constructed as follows:

- A. The maximum width of the running surface will be 14'. The road will be crowned, ditched and constructed of 6" rolled and compacted caliche. Ditches will be at 3:1 slope and 4 feet wide. Water will be diverted where necessary to avoid ponding, prevent erosion, maintain good drainage, and to be consistent with local drainage patterns.
- B. The average grade will be less than 1%.
- C. No turnouts are planned.
- D. No culverts, cattleguard, gates, low water crossings or fence cuts are necessary.

- E. Surfacing material will consist of native caliche. Caliche will be obtained from the actual well site if available. If not available onsite, caliche will be hauled from the nearest BLM caliche pit.

3. Location of Existing Well:

Exhibit #5 shows all existing wells within a one-mile radius of this well.

As shown on this plat there are numerous wells producing from the San Andres and Yeso formations.

4. Location of Existing and/or Proposed Facilities:

- A. COG Operating LLC does operate a production facility on this lease.
- B. If the well is productive, contemplated facilities will be as follows:
 - 1) Production will be sent to the B C Federal tank battery located at the B C Federal #1 well location at 330 FNL & 1575 FWL, Section 20, T17S, R32E, UL C. The facility location is shown in Exhibit #5.
 - 2) The tank battery and facilities including all flow lines and piping will be installed according to API specifications.
 - 3) Any additional caliche will be obtained from the actual well site. If caliche does not exist or is not plentiful from the well site, the caliche will be hauled from a BLM approved caliche pit. Any additional construction materials will be purchased from contractors.
 - 4) Proposed flow lines, will follow an archaeologically approved route to the B C Federal tank battery located at the B C Federal #1 well location at 330 FNL & 1575 FWL, Section 20, T17S, R32E, UL C. The facility location is shown in Exhibit #5. The flowline will be SDR 7 3" poly line laid on the surface, and will be approximately 1281' in length with max pressure 100 psi. Flowlines will be no more than 11' from the paralleling road.
 - 5) It will be necessary to run electric power if this well is productive. Power will be provided by CVE and they will submit a separate plan and ROW for service to the well location.
 - 6) If the well is productive, rehabilitation plans will include the following:
 - a) The original topsoil from the well site will be returned to the location, and the site will be re-contoured as close as possible to the original site.

5. Location and Type of Water Supply:

The well will be drilled with combination brine and fresh water mud system as outlined in the drilling program. The water will be obtained from commercial water stations in the area and hauled to location by transport truck over the existing and proposed access roads shown in Exhibit #2. If a commercial fresh water source is nearby, fast line may be laid along existing road ROW's and fresh water pumped to the well. No water well will be drilled on the location.

6. Source of Construction Materials and Location "Turn-Over" Procedure:

Obtaining caliche: The primary way of obtaining caliche to build locations and roads will be by "turning over" the location. This means, caliche will be obtained from the actual well sight. A caliche permit will be obtained from BLM prior to pushing up any caliche. 2400 cu. Yards is max amount of caliche needed for pad and roads. Amount will vary for each pad. The procedure below has been approved by BLM personnel:

- A. The top 6 inches of topsoil is pushed off and stockpiled along the side of the location.**
- B. An approximate 120' X 120' area is used within the proposed well site to remove caliche.**
- C. Subsoil is removed and piled along side the 120' by 120' area within the pad site.**
- D. When caliche is found, material will be stock piled within the pad site to build the location and road.**
- E. Then subsoil is pushed back in the hole and caliche is spread accordingly across entire location and road.**
- F. Once well is drilled, the stock piled top soil will be used for interim reclamation and spread along areas where caliche is picked up and the location size is reduced. Neither caliche or subsoil will be stock piled outside of the well pad. Topsoil will be stockpiled along the edge of the pad as depicted in attached plat.**

In the event that no caliche is found onsite, caliche will be hauled in from a BLM approved caliche pit.

7. Methods of Handling Water Disposal:

- A. The well will be drilled utilizing a closed loop mud system. Drill cuttings will be held in roll-off style mud boxes and taken to an NMOCD approved disposal site.
- B. Drilling fluids will be contained in steel mud pits.
- C. Water produced from the well during completion will be held temporarily in steel tanks and then taken to an NMOCD approved commercial disposal facility.
- D. Garbage and trash produced during drilling or completion operations will be collected in a trash bin and hauled to an approved landfill. No toxic waste or hazardous chemicals will be produced by this operation.
- E. After the rig is moved out and the well is either completed or abandoned, all waste materials will be cleaned up within 30 days. In the event of a dry hole only a dry hole marker will remain.

8. Ancillary Facilities:

No airstrip, campsite or other facilities will be built as a result of the operation on this well.

9. Well Site Layout:

- A. The drill pad layout, with elevations staked by John West Engineering, is shown in Exhibit #4. Dimensions of the pad and pits are shown on Exhibit #6. . V door direction is East. Topsoil, if available, will be stockpiled per BLM specifications. Because the pad is almost level no major cuts will be required.
- B. Exhibit #6 also shows the proposed orientation of closed loop system and access road. No permanent living facilities are planned, but a temporary foreman/toolpusher's trailer will be on location during the drilling operations.

10. Plans for Restoration of the Surface:

- A. Interim Reclamation will take place after the well has been completed. The pad will be downsized by reclaiming the areas not needed for production operations. The portions of the pad that are not needed for production operations will be re-contoured to its original state as much as possible. The caliche that is removed will be reused to either build another pad site or for road repairs within the lease. The stockpiled topsoil will then be spread out reclaimed area and reseeded with a BLM approved seed mixture. In the event that the well must be worked over or maintained, it may be necessary to drive, park, and/or operate machinery on reclaimed land. This area will be repaired or reclaimed after work is complete.
- B. Final Reclamation: Upon plugging and abandoning the well, All caliche for well pad and lease road will be removed and surface will be recountoured to reflect its surroundings as much as possible. Caliche will be recycled for road repair or reused for another well pad within the lease. If any topsoil remains, it will be spread out and the area will be re-seeded with a BLM approved mixture and re-vegetated as per BLM orders.

11. Surface Ownership:

- A. The surface is owned by the U.S. Government and is administered by the Bureau of Land Management. The surface is multiple uses with the primary uses of the region for grazing of livestock and the production of oil and gas.
- B. The surface tenant for this site is Olane Caswell, 1702 Gillham, Brownfield, TX 79316.
- C. The proposed road routes and surface location will be restored as directed by the BLM

12. Other Information:

- A. The area around the well site is grassland and the topsoil is sandy. The vegetation is moderately sparse with native prairie grasses, some mesquite and shinnery oak. No wildlife was observed but it is likely that mule deer, rabbits, coyotes and rodents traverse the area.
- B. There is no permanent or live water in the immediate area.
- C. There are no dwellings within 2 miles of this location.

Surface Use Plan
COG Operating, LLC
B C Federal 62
SHL: 1105' FNL & 2015' FWL, Unit C
BHL: 1650' FNL & 2310' FWL, Unit F
Section 20, T-17-S, R-32-E
Lea County, New Mexico

- D. If needed, a Cultural Resources Examination is being prepared by Southern New Mexico Archaeological Services, Inc. P.O. Box 1, Bent New Mexico, 88314, phone # 505-671-4797 and the results will be forwarded to your office in the near future. Otherwise, **COG will be participating in the Permian Basin MOA Program.**

13. Bond Coverage:

Bond Coverage is ~~Nationwide~~ ^{STATEWIDE NMB} Bond # 000215

14. Lessee's and Operator's Representative:

The COG Operating LLC representative responsible for assuring compliance with the surface use plan is as follows:

John Coffman,

Drilling Superintendent

COG Operating LLC

550 W. Texas, Suite 1300

Midland, TX 79701

Phone (432) 683-7443 (office)

(432) 631-9762 (cell)

Erick Nelson.

Division Operations Manager

COG Operating LLC

550 W. Texas, Suite 1300

Midland, TX 79701

Phone (505) 746-2210 (office)

(432) 238-7591 (cell)

Surface Use Plan
COG Operating, LLC
B C Federal 62
SHL: 1105' FNL & 2015' FWL, Unit C
BHL: 1650' FNL & 2310' FWL, Unit F
Section 20, T-17-S, R-32-E
Lea County, New Mexico

I hereby certify that I, or persons under my direct supervision, have inspected the drill site and access road proposed herein; that I am familiar with the conditions that presently exist; that I have full knowledge of State and Federal laws applicable to this operation; that the statements made in this APD package are, to the best of my knowledge, true and correct; and that the work associated with the operations proposed herein will be performed in conformity with this APD package and the terms and conditions under which it is approved. I also certify that I, or COG Operating, LLC, am responsible for the operations conducted under this application. These statements are subject to the provisions of 18 U.S.C. 1001 for the filing of false statements. Executed this 29th day of December, 2010.

Signed: Carl Bird

Printed Name: Carl Bird

Position: Drilling Engineer

Address: 550 W. Texas, Suite 1300, Midland, Texas 79701

Telephone: (432) 683-7443

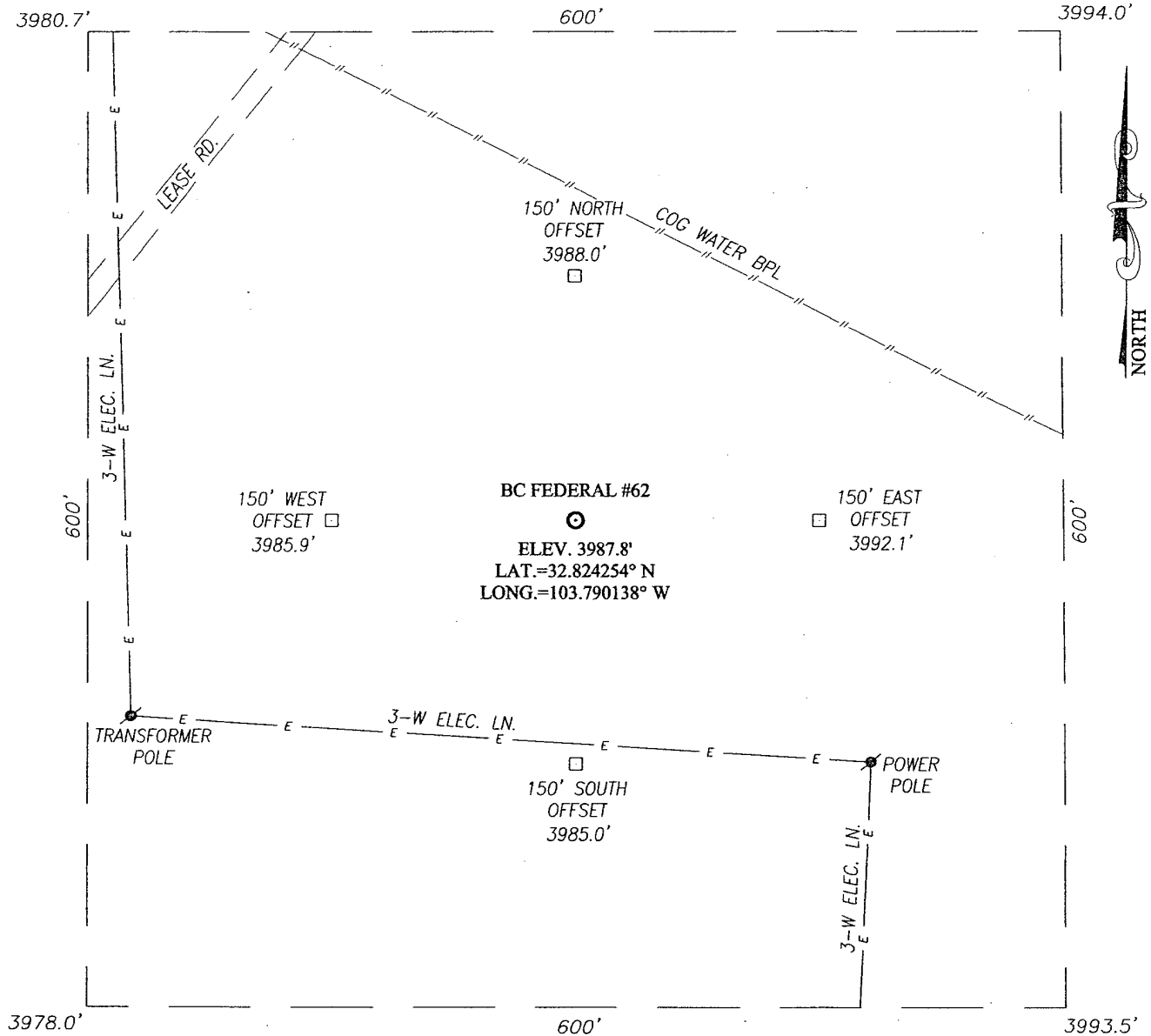
Field Representative (if not above signatory): Same

E-mail: cbird@conchoresources.com

SECTION 20, TOWNSHIP 17 SOUTH, RANGE 32 EAST, N.M.P.M.

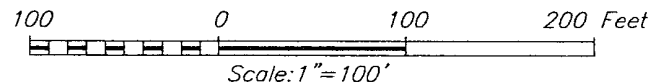
LEA COUNTY

NEW MEXICO



DIRECTIONS TO LOCATION

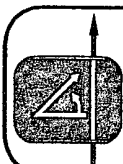
FROM THE INTERSECTION OF CO. RD. #L126 (MALJAMAR ROAD) AND CO. RD. #L126 (CONOCO ROAD), GO WEST ON CONOCO ROAD APPROX. 2.0 MILES. TURN RIGHT AND GO NORTH APPROX. 0.5 MILES. VEER RIGHT AND GO NORTHEAST APPROX. 0.3 MILES. THIS LOCATION STAKE IS APPROX. 350 SOUTH OF LEASE ROAD.



COG OPERATING, LLC

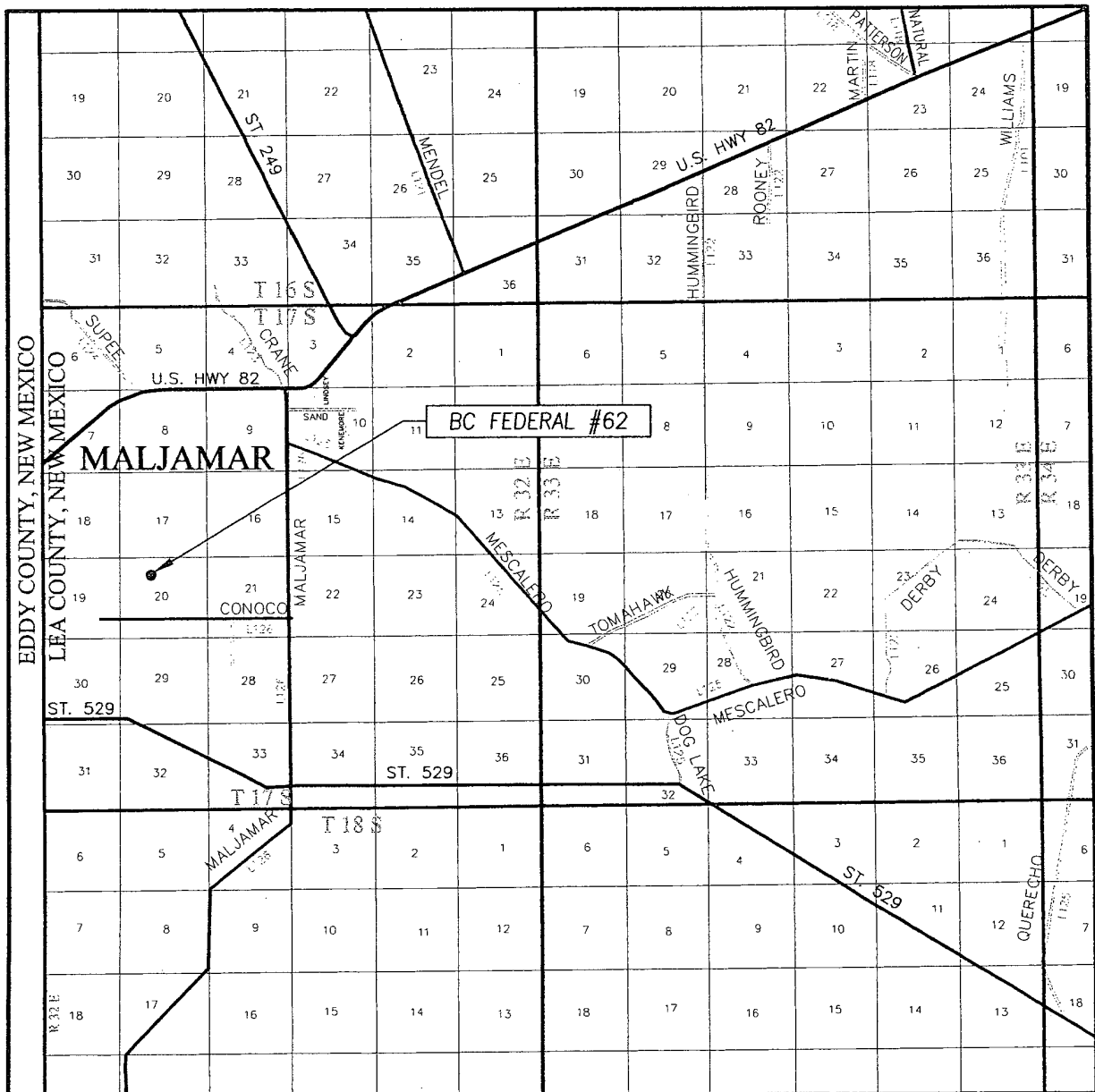
BC FEDERAL #62 WELL
LOCATED 1105 FEET FROM THE NORTH LINE
AND 2015 FEET FROM THE WEST LINE OF SECTION 20,
TOWNSHIP 17 SOUTH, RANGE 32 EAST, N.M.P.M.,
LEA COUNTY, NEW MEXICO

Survey Date: 8/27/10	Sheet 1 of 1 Sheets
W.O. Number: 10.11.1006	Dr By: DSS
Date: 9/2/10	Rev 1: .
10.11.1006	Scale: 1"=100'



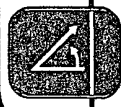
PROVIDING SURVEYING SERVICES
SINCE 1946
JOHN WEST SURVEYING COMPANY
412 N. DAL PASO
HOBBS, N.M. 88240
(575) 393-3117

VICINITY MAP



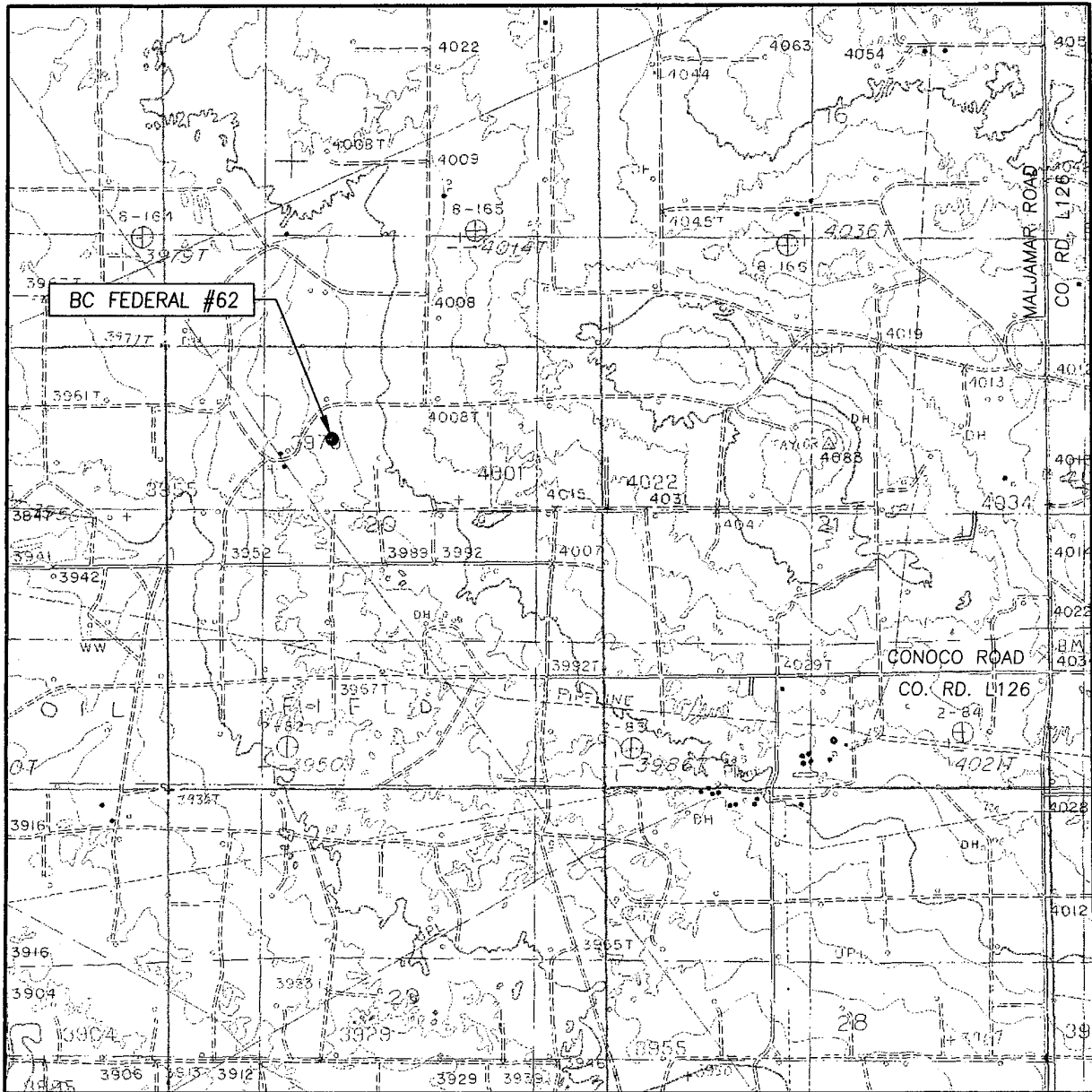
SCALE: 1" = 2 MILES

SEC. 20 TWP. 17-S RGE. 32-E
 SURVEY N.M.P.M.
 COUNTY LEA STATE NEW MEXICO
 DESCRIPTION 1105' FNL & 2015' FWL
 ELEVATION 3988'
 OPERATOR COG OPERATING, LLC
 LEASE BC FEDERAL



PROVIDING SURVEYING SERVICES
 SINCE 1946
JOHN WEST SURVEYING COMPANY
 412 N. DAL PASO
 HOBBS, N.M. 88240
 (575) 393-3117

LOCATION VERIFICATION MAP



SCALE: 1" = 2000'

CONTOUR INTERVAL:
MALJAMAR, N.M. - 10'

SEC. 20 TWP. 17-S RGE. 32-E

SURVEY N.M.P.M.

COUNTY LEA STATE NEW MEXICO


DESCRIPTION 1105' FNL & 2015' FWL

ELEVATION 3988'

OPERATOR COG OPERATING, INC.

LEASE BC FEDERAL

U.S.G.S. TOPOGRAPHIC MAP
MALJAMAR, N.M.



PROVIDING SURVEYING SERVICES
SINCE 1946
JOHN WEST SURVEYING COMPANY
412 N. DAL PASO
HOBBS, N.M. 88240
(575) 393-3117

Offset Wells to B C Federal #62

API#	Operator	County	Legal	Lease	Well#	Date Issued	Permitted Depth	Permit TVD	Images	Doc	Total Depth	Well Type	Well Status	TD Source	Permit#
30-025-39856	COG OPERATING LLC	LEA	S:20, T:17S, R:32E	BC FEDERAL	58	7/29/2010	7,000		Yes	link	7,000	PO	Active Permit	Permit	TEMP778848719
30-025-39857	COG OPERATING LLC	LEA	S:20, T:17S, R:32E	BC FEDERAL	63	7/29/2010	7,000		Yes	link	7,000	PO	Active Permit	Permit	TEMP1892833057
30-025-39858	COG OPERATING LLC	LEA	S:20, T:17S, R:32E	GC FEDERAL	43	7/29/2010	7,159	7,100	Yes	link	7,159	PO	Active Permit	Permit	TEMP1922643520
30-025-39835	COG OPERATING LLC	LEA	S:16, T:17S, R:32E	EDWARD STATE	009	7/21/2010	7,000		Yes	link	7,000	PO	Active Permit	Permit	TEMP90782903
30-025-39817	CIMAREX ENERGY CO. OF COLORADO	LEA	S:16, T:17S, R:32E	JG STATE	003	7/7/2010	7,100		Yes	link	7,100	PO	Active Permit	Permit	TEMP717413741
30-025-39798	CIMAREX ENERGY CO. OF COLORADO	LEA	S:16, T:17S, R:32E	JG STATE	04	6/21/2010	7,100		Yes	link	7,100	PO	Active Permit	Permit	TEMP1819920561
30-025-39683	COG OPERATING LLC	LEA	S:16, T:17S, R:32E	EDWARD STATE	011	2/16/2010	7,000		Yes	link	7,000	PO	Active Permit	Permit	TEMP1707461541
30-025-39697	COG OPERATING LLC	LEA	S:20, T:17S, R:32E	GC FEDERAL	37	2/11/2010	7,127	7,100	Yes	link	7,127	PO	Active Permit	Permit	TEMP2071368208
30-025-39626	COG OPERATING LLC	LEA	S:20, T:17S, R:32E	GC FEDERAL	40	12/24/2009	7,144	7,100	Yes	link	7,144	PO	Active Permit	Permit	TEMP562800386
30-025-39624	COG OPERATING LLC	LEA	S:19, T:17S, R:32E	BC FEDERAL	52	12/22/2009	7,117	7,160	Yes	link	7,117	PO	Active Permit	Permit	TEMP281219397
30-025-39625	COG OPERATING LLC	LEA	S:20, T:17S, R:32E	BC FEDERAL	54	12/22/2009	7,000		Yes	link	7,000	PO	Active Permit	Permit	TEMP1757160506
30-025-39612	COG OPERATING LLC	LEA	S:20, T:17S, R:32E	BC FEDERAL	53	12/4/2009	7,100		Yes	link	7,100	PO	Active Permit	Permit	TEMP914263798
30-025-39544	COG OPERATING LLC	LEA	S:20, T:17S, R:32E	BC FEDERAL	55	10/2/2009	7,000		Yes	link	7,000	PO	Active Permit	Permit	TEMP704627628
30-025-39543	COG OPERATING LLC	LEA	S:19, T:17S, R:32E	BC FEDERAL	47	10/2/2009	6,900		Yes	link	6,900	PO	Active Permit	Permit	TEMP678628988
30-025-39507	COG OPERATING LLC	LEA	S:21, T:17S, R:32E	MC FEDERAL	44	8/23/2009	7,000		Yes	link	7,000	PO	Active Permit	Permit	TEMP158533572
30-025-39515	COG OPERATING LLC	LEA	S:20, T:17S, R:32E	GC FEDERAL	39	8/23/2009	7,000		Yes	link	7,020	O	Active Permit	Completion	TEMP1263446901
30-025-39611	COG OPERATING LLC	LEA	S:19, T:17S, R:32E	BC FEDERAL	46	8/14/2009	3,967		Yes	link	3,967	PO	Active Permit	Permit	TEMP269250618
30-025-39500	COG OPERATING LLC	LEA	S:21, T:17S, R:32E	M C FEDERAL	66	8/12/2009	7,200		Yes	link	7,200	PO	Active Permit	Permit	TEMP734772617
30-025-39497	COG OPERATING LLC	LEA	S:20, T:17S, R:32E	BC FEDERAL	57	8/12/2009	7,000		Yes	link	7,000	PO	Active Permit	Permit	TEMP913062814
30-025-39498	COG OPERATING LLC	LEA	S:19, T:17S, R:32E	GC FEDERAL	54	8/12/2009	7,100		Yes	link	7,100	PO	Active Permit	Permit	TEMP1680738159
30-025-39476	COG OPERATING LLC	LEA	S:20, T:17S, R:32E	GC FEDERAL	63	7/23/2009	7,019	7,000	Yes	link	7,019	PO	Active Permit	Permit	TEMP1850343327
30-025-39472	COG OPERATING LLC	LEA	S:20, T:17S, R:32E	GC FEDERAL	41	7/22/2009	7,100		Yes	link	7,123	O	Active Permit	Completion	TEMP254749392
30-025-39475	COG OPERATING LLC	LEA	S:20, T:17S, R:32E	GC FEDERAL	62	7/22/2009	7,137	7,100	Yes	link	7,137	PO	Active Permit	Permit	TEMP1481001204
30-025-39471	COG OPERATING LLC	LEA	S:20, T:17S, R:32E	GC FEDERAL	38	7/22/2009	7,138	7,100	Yes	link	7,129	O	Active Permit	Completion	TEMP962979159
30-025-39468	COG OPERATING LLC	LEA	S:19, T:17S, R:32E	BC FEDERAL	50	7/17/2009	6,900		Yes	link	6,920	O	Active Permit	Completion	TEMP206526192
30-025-39467	COG OPERATING LLC	LEA	S:19, T:17S, R:32E	BC FEDERAL	49	7/16/2009	7,037	7,000	Yes	link	7,037	PO	Active Permit	Permit	TEMP773835908
	COG OPERATING			GC											

30-025-39474	LLC	LEA	S:19, T:17S, R:32E	FEDERAL	56	7/16/2009	7,030	7,000	Yes	link	7,030	PO	Active Permit	Permit	TEMP773940142
30-025-39416	COG OPERATING LLC	LEA	S:20, T:17S, R:32E	BC FEDERAL	42	5/20/2009	7,000		Yes	link	7,006	O	Active Permit	Completion	TEMP1193997056
30-025-39415	COG OPERATING LLC	LEA	S:20, T:17S, R:32E	BC FEDERAL	41	5/20/2009	7,013	7,000	Yes	link	7,050	O	Active Permit	Completion	TEMP2046430932
30-025-39425	COG OPERATING LLC	LEA	S:21, T:17S, R:32E	MC FEDERAL	42	5/20/2009	7,050		Yes	link	7,050	PO	Active Permit	Permit	TEMP1264162096
30-025-39414	COG OPERATING LLC	LEA	S:20, T:17S, R:32E	BC FEDERAL	40	5/19/2009	7,000		Yes	link	7,036	O	Active Permit	Completion	TEMP720222835
30-025-39423	COG OPERATING LLC	LEA	S:21, T:17S, R:32E	MC FEDERAL	40	5/19/2009	7,013	7,000	Yes	link	7,013	PO	Active Permit	Permit	TEMP121036354
30-025-39422	COG OPERATING LLC	LEA	S:19, T:17S, R:32E	GC FEDERAL	37	5/19/2009	6,900		Yes	link	6,925	O	Active Permit	Completion	TEMP1588474770
30-025-39418	COG OPERATING LLC	LEA	S:19, T:17S, R:32E	BC FEDERAL	44	5/19/2009	7,000		Yes	link	7,000	PO	Active Permit	Permit	TEMP962267815
30-025-39417	COG OPERATING LLC	LEA	S:20, T:17S, R:32E	BC FEDERAL	43	5/19/2009	7,000		Yes	link	7,010	O	Active Permit	Completion	TEMP960606207
30-025-39470	COG OPERATING LLC	LEA	S:20, T:17S, R:32E	BC FEDERAL	59	5/7/2009	7,100		Yes	link	7,100	PO	Active Permit	Permit	TEMP437053396
30-025-39473	COG OPERATING LLC	LEA	S:20, T:17S, R:32E	GC FEDERAL	45	3/6/2009	7,127	7,100	Yes	link	7,134	O	Active Permit	Completion	TEMP1610221069
30-025-39292	COG OPERATING LLC	LEA	S:21, T:17S, R:32E	MC FEDERAL	38	12/4/2008	7,000		Yes	link	7,035	O	Active Permit	Completion	TEMP1425686257
30-025-39269	COG OPERATING LLC	LEA	S:20, T:17S, R:32E	GC FEDERAL	23	11/17/2008	7,029	7,000	Yes	link	7,035	O	Active Permit	Completion	TEMP1650840424
30-025-39272	COG OPERATING LLC	LEA	S:20, T:17S, R:32E	GC FEDERAL	30	11/17/2008	7,100		Yes	link	7,016	O	Active Permit	Completion	TEMP1861288742
30-025-39267	COG OPERATING LLC	LEA	S:20, T:17S, R:32E	GC FEDERAL	21	11/17/2008	7,000		Yes	link	7,000	PO	Active Permit	Permit	TEMP457092114
30-025-39270	COG OPERATING LLC	LEA	S:20, T:17S, R:32E	GC FEDERAL	32	11/17/2008	7,121	7,100	Yes	link	7,136	O	Active Permit	Completion	TEMP647835779
30-025-39268	COG OPERATING LLC	LEA	S:20, T:17S, R:32E	GC FEDERAL	22	11/17/2008	7,000		Yes	link	7,015	O	Active Permit	Completion	TEMP486122460
30-025-39264	COG OPERATING LLC	LEA	S:20, T:17S, R:32E	GC FEDERAL	27	11/13/2008	7,100		Yes	link	7,103	O	Active Permit	Completion	TEMP560444403
30-025-39266	COG OPERATING LLC	LEA	S:20, T:17S, R:32E	GC FEDERAL	31	11/13/2008	7,100		Yes	link	7,123	O	Active Permit	Completion	TEMP1435730061
30-025-39262	COG OPERATING LLC	LEA	S:20, T:17S, R:32E	GC FEDERAL	24	11/13/2008	7,027	7,000	Yes	link	7,045	O	Active Permit	Completion	TEMP106440933
30-025-39261	COG OPERATING LLC	LEA	S:20, T:17S, R:32E	GC FEDERAL	20	11/13/2008	7,000		Yes	link	7,020	O	Active Permit	Completion	TEMP915113969
30-025-39263	COG OPERATING LLC	LEA	S:20, T:17S, R:32E	GC FEDERAL	25	11/13/2008	7,000		Yes	link	7,010	O	Active Permit	Completion	TEMP1396235185
30-025-39265	COG OPERATING LLC	LEA	S:20, T:17S, R:32E	GC FEDERAL	29	11/13/2008	7,120	7,100	Yes	link	7,114	O	Active Permit	Completion	TEMP1070757344
30-025-39282	COG OPERATING LLC	LEA	S:20, T:17S, R:32E	GC FEDERAL	26	11/13/2008	7,100		Yes	link	7,035	O	Active Permit	Completion	TEMP1901374924
30-025-39323	COG OPERATING LLC	LEA	S:20, T:17S, R:32E	GC FEDERAL	28	11/13/2008	7,100		Yes	link	7,100	PO	Active Permit	Permit	TEMP579827007
30-025-39162	COG OPERATING LLC	LEA	S:19, T:17S, R:32E	GC FEDERAL	19	8/22/2008	7,100		Yes	link	7,022	O	Active Permit	Completion	TEMP732619990
30-025-39163	COG. OPERATING, L.L.C. or COG OPERATING LLC	LEA	S:21, T:17S, R:32E	MC FEDERAL	36	8/22/2008	7,012	7,000	Yes	link	7,012	PO	Active Permit	Permit	TEMP376947698
30-025-39113	COG. OPERATING, L.L.C. or COG OPERATING LLC	LEA	S:19, T:17S, R:32E	GC FEDERAL	18	8/19/2008	7,000		Yes	link	7,050	O	Active Permit	Completion	TEMP1121428476
30-025-39111	COG OPERATING L L C or COG OPERATING LLC	LEA	S:19, T:17S, R:32E	GC FEDERAL	15	8/19/2008	7,000		Yes	link	7,037	O	Active Permit	Completion	TEMP734673321

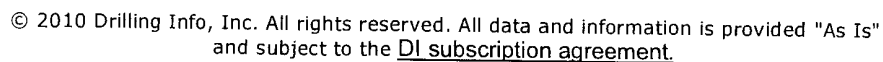
30-025-39110	COG OPERATING LLC or COG OPERATING LLC	LEA	S:19, T:17S, R:32E	GC FEDERAL	14	8/19/2008	6,900		Yes	link	7,025	O	Active Permit	Completion	TEMP1323695931
30-025-39107	COG OPERATING LLC or COG OPERATING LLC	LEA	S:21, T:17S, R:32E	MC FEDERAL	35	8/8/2008	7,022	7,000	Yes	link	7,050	O	Active Permit	Completion	TEMP1595953344
30-025-39019	COG OPERATING LLC	LEA	S:16, T:17S, R:32E	EDWARD STATE	007	7/10/2008			Yes	link	6,960	O	Active Permit	Completion	TEMP861348505
30-025-38993	COG OPERATING LLC	LEA	S:19, T:17S, R:32E	GC FEDERAL	10	6/17/2008	6,800		Yes	link	6,805	O	Active Permit	Completion	TEMP1896878906
30-025-38992	COG OPERATING LLC	LEA	S:19, T:17S, R:32E	BC FEDERAL	36	6/13/2008	6,800		Yes	link	6,918	O	Active Permit	Completion	TEMP1125053629
30-025-38994	COG OPERATING LLC	LEA	S:19, T:17S, R:32E	GC FEDERAL	11	6/13/2008	6,800		Yes	link	6,817	O	Active Permit	Completion	TEMP1116399800
30-025-38842	COG OPERATING LLC	LEA	S:19, T:17S, R:32E	GC FEDERAL	8	4/1/2008	7,250		Yes	link	6,815	O	Active Permit	Completion	TEMP1020968955
30-025-38835	COG OPERATING LLC	LEA	S:21, T:17S, R:32E	MC FEDERAL	302519	3/26/2008	7,300		Yes	link	7,055	O	Active Permit	Completion	TEMP1546954227
30-025-38814	COG OPERATING LLC	LEA	S:20, T:17S, R:32E	BC FEDERAL	29	3/7/2008	7,200		Yes	link	7,041	O	Active Permit	Completion	TEMP741824707
30-025-38815	COG OPERATING LLC	LEA	S:21, T:17S, R:32E	MC FEDERAL	21	3/7/2008	7,400		Yes	link	7,020	O	Active Permit	Completion	TEMP1242078539
30-025-38741	COG OPERATING LLC	LEA	S:19, T:17S, R:32E	BC FEDERAL	22	2/2/2008	7,200		Yes	link	7,040	O	Active Permit	Completion	TEMP1958266845
30-025-38739	COG OPERATING LLC	LEA	S:21, T:17S, R:32E	MC FEDERAL	16	2/1/2008	7,300		Yes	link	7,021	O	Active Permit	Completion	TEMP806592438
30-025-38742	COG OPERATING LLC	LEA	S:19, T:17S, R:32E	BC FEDERAL	23	2/1/2008	7,250		Yes	link	7,250	PO	Active Permit	Permit	TEMP1783345657
30-025-38743	COG OPERATING LLC	LEA	S:19, T:17S, R:32E	BC FEDERAL	24	2/1/2008	7,200		Yes	link	6,926	O	Active Permit	Completion	TEMP2120580483
30-025-38744	COG OPERATING LLC	LEA	S:20, T:17S, R:32E	BC FEDERAL	25	2/1/2008	7,250		Yes	link	7,024	O	Active Permit	Completion	TEMP87324888
30-025-38745	COG OPERATING LLC	LEA	S:20, T:17S, R:32E	BC FEDERAL	26	2/1/2008	7,250		Yes	link	7,000	O	Active Permit	Completion	TEMP2102159644
30-025-38746	COG OPERATING LLC	LEA	S:20, T:17S, R:32E	BC FEDERAL	28	2/1/2008	7,300		Yes	link	7,033	O	Active Permit	Completion	TEMP1634582970
30-025-38742	COG OPERATING LLC	LEA	S:19, T:17S, R:32E	BC FEDERAL	023	2/1/2008	7,250		Yes	link	7,250	PO	Active Permit	Permit	TEMP161962920
30-025-38724	COG OPERATING LLC	LEA	S:19, T:17S, R:32E	BC FEDERAL	16	1/25/2008	7,200		Yes	link	7,200	PO	Active Permit	Permit	TEMP331256724
30-025-38727	COG OPERATING LLC	LEA	S:20, T:17S, R:32E	BC FEDERAL	27	1/25/2008	7,300		Yes	link	7,300	PO	Active Permit	Permit	TEMP691287581
30-025-38713	COG OPERATING LLC	LEA	S:20, T:17S, R:32E	BC FEDERAL	31	1/21/2008	7,200		Yes	link	7,025	O	Active Permit	Completion	TEMP1749808713
30-025-38714	COG OPERATING LLC	LEA	S:20, T:17S, R:32E	BC FEDERAL	33	1/21/2008	7,200		Yes	link	7,200	PO	Active Permit	Permit	TEMP1397188814
30-025-38717	COG OPERATING LLC	LEA	S:21, T:17S, R:32E	MC FEDERAL	24	1/21/2008	7,400		Yes	link	7,042	O	Active Permit	Completion	TEMP1766771602
30-025-38829	COG OPERATING LLC	LEA	S:20, T:17S, R:32E	BC FEDERAL	32	1/21/2008	7,200		Yes	link	6,900	O	Active Permit	Completion	TEMP99021850
30-025-38703	COG OPERATING LLC	LEA	S:21, T:17S, R:32E	MC FEDERAL	20	1/11/2008	7,400		Yes	link	7,400	PO	Active Permit	Permit	TEMP124059230
30-025-38621	COG OPERATING LLC	LEA	S:16, T:17S, R:32E	EDWARD STATE	005	11/29/2007	7,000		Yes	link	7,040	O	Active	Completion	TEMP1539290662
30-025-38539	COG OPERATING LLC	LEA	S:20, T:17S, R:32E	BC FEDERAL	15	9/5/2007	7,000		Yes	link	7,015	O	Active Permit	Completion	TEMP1141514866
30-025-38545	COG OPERATING LLC	LEA	S:20, T:17S, R:32E	GC FEDERAL	6	9/3/2007	7,100		Yes	link	7,100	PO	Active Permit	Permit	TEMP1290772446
30-025-38366	COG OPERATING LLC	LEA	S:20, T:17S, R:32E	BC FEDERAL	14	3/29/2007	7,000		Yes	link	6,985	O	Active Permit	Completion	TEMP889433513

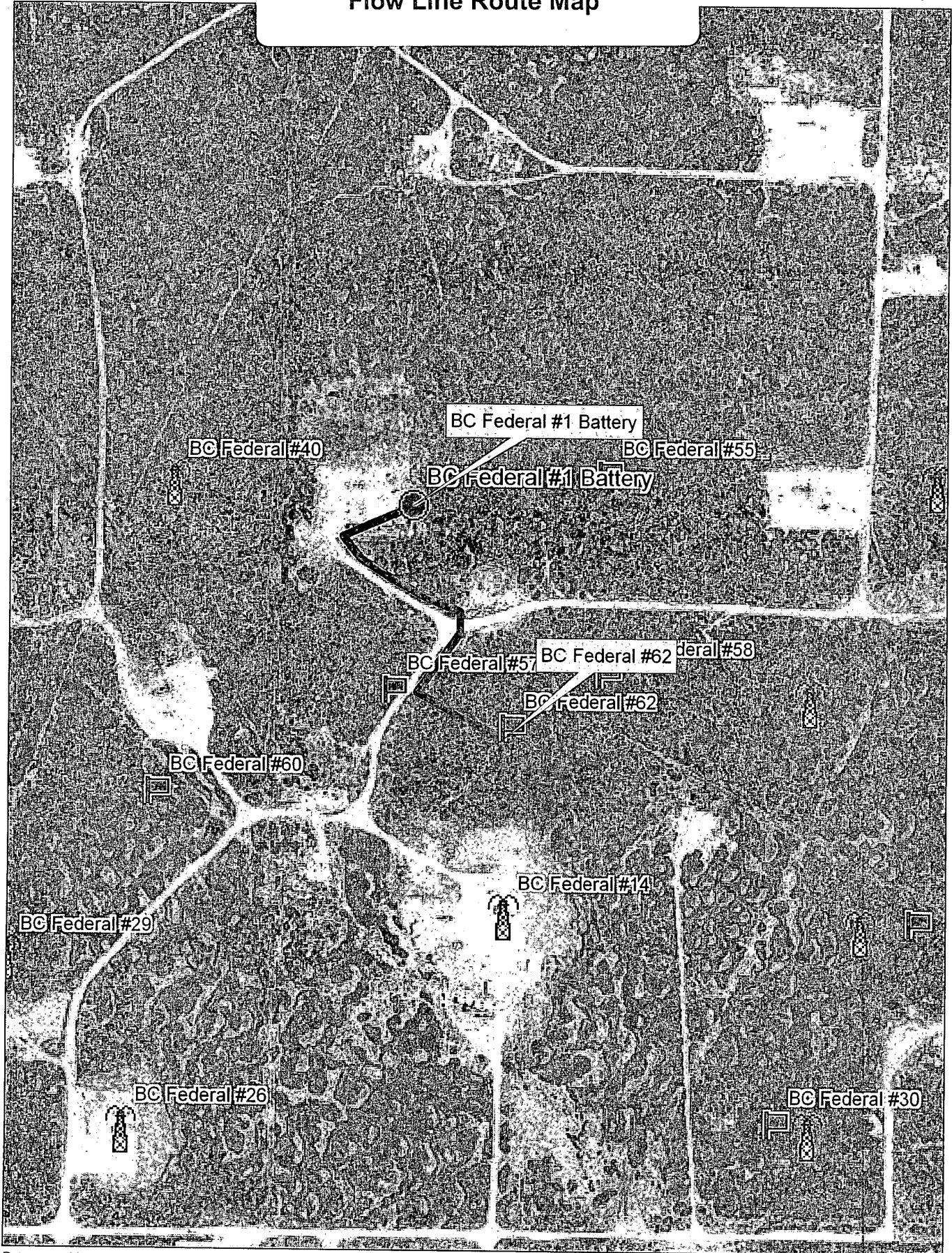
30-025-38164	COG OPERATING LLC	LEA	S:19, T:17S, R:32E	BC FEDERAL	013	10/31/2006	6,700	No	link	6,700	O	Active Permit	Permit	TEMP1135781705
30-025-36194	MACK ENERGY CORPORATION or MACK ENERGY CORP	LEA	S:20, T:17S, R:32E	BC FEDERAL	8	2/27/2003	7,000	No	link	7,060	O	Active	Completion	TEMP2050392132
30-025-36194	MACK ENERGY CORPORATION or MACK ENERGY CORP	LEA	S:20, T:17S, R:32E	BC FEDERAL	008	2/4/2003	7,000	No	link	7,060	O	Active	Completion	TEMP359362235
30-025-36194	MACK ENERGY CORP	LEA	S:20, T:17S, R:32E	BC FEDERAL	008	1/31/2003		No	link	7,060	O	Active	Completion	TEMP139286391
30-025-08065	CONOCOPHILLIPS COMPANY	LEA	S:20, T:17S, R:32E	MCA UNIT	095	1/1/2003	0	No	link	0	O	Active	Permit	TEMP1599864275
30-025-00618	CONOCOPHILLIPS COMPANY	LEA	S:21, T:17S, R:32E	BAISH A	003	1/1/2003		No	link		O	Pumping		TEMP481799974
30-025-20568	CONOCOPHILLIPS COMPANY	LEA	S:21, T:17S, R:32E	BAISH A	012	1/1/2003		No	link		O	Pumping		TEMP1807259935
30-025-00579	CONOCOPHILLIPS COMPANY	LEA	S:16, T:17S, R:32E	MCA UNIT	013	1/1/2003		No	link		O	Pumping		TEMP1316485737
30-025-00580	CONOCOPHILLIPS COMPANY	LEA	S:16, T:17S, R:32E	MCA UNIT	005	1/1/2003		No	link		O	Pumping		TEMP1521941649
30-025-00596	CONOCOPHILLIPS COMPANY	LEA	S:17, T:17S, R:32E	MCA UNIT	267	1/1/2003	0	No	link	5,405	O	Pumping	WellLog	TEMP1827047527
30-025-00598	CONOCOPHILLIPS COMPANY	LEA	S:17, T:17S, R:32E	MCA UNIT	008	1/1/2003	0	No	link	0	O	Pumping	Permit	TEMP1720856831
30-025-00606	CONOCOPHILLIPS COMPANY	LEA	S:21, T:17S, R:32E	MCA UNIT	047	1/1/2003	0	No	link	0	O	Pumping	Permit	TEMP667029593
30-025-00607	CONOCOPHILLIPS COMPANY	LEA	S:21, T:17S, R:32E	MCA UNIT	026	1/1/2003		No	link		PI	Injection Well		TEMP654332879
30-025-00608	CONOCOPHILLIPS COMPANY	LEA	S:21, T:17S, R:32E	MCA UNIT	093	1/1/2003	0	No	link	0	O	Pumping	Permit	TEMP541601452
30-025-00610	CONOCOPHILLIPS COMPANY	LEA	S:21, T:17S, R:32E	MCA UNIT	067	1/1/2003	0	No	link	4,125	I	Injection Well	WellLog	TEMP788610246
30-025-00733	CONOCOPHILLIPS COMPANY	LEA	S:28, T:17S, R:32E	MCA UNIT	114	1/1/2003		No	link	4,071	O	Injection Well	Completion	TEMP1322522293
30-025-00767	CONOCOPHILLIPS COMPANY	LEA	S:29, T:17S, R:32E	MCA UNIT	111	1/1/2003	0	No	link	4,072	I	Injection Well	WellLog	TEMP802741854
30-025-00769	CONOCOPHILLIPS COMPANY	LEA	S:30, T:17S, R:32E	MCA UNIT	107	1/1/2003		No	link		I	Plugged		TEMP910856295
30-025-08029	CONOCOPHILLIPS COMPANY	LEA	S:19, T:17S, R:32E	MCA UNIT	020	1/1/2003		No	link		PI	Temporarily Abandoned		TEMP2006236413
30-025-08030	CONOCOPHILLIPS COMPANY	LEA	S:19, T:17S, R:32E	MCA UNIT	021	1/1/2003	0	No	link	0	O	Pumping	Permit	TEMP2046635048
30-025-08035	CONOCOPHILLIPS COMPANY	LEA	S:19, T:17S, R:32E	MCA UNIT	060	1/1/2003	0	No	link	3,970	O	Shut-in	WellLog	TEMP1803858492
30-025-08038	CONOCOPHILLIPS COMPANY	LEA	S:19, T:17S, R:32E	MCA UNIT	053	1/1/2003		No	link		PO	Temporarily Abandoned		TEMP1916205170
30-025-08041	CONOCOPHILLIPS COMPANY	LEA	S:19, T:17S, R:32E	MCA UNIT	100	1/1/2003		No	link		PI	Injection Well		TEMP1020598508
30-025-08042	CONOCOPHILLIPS COMPANY	LEA	S:19, T:17S, R:32E	MCA UNIT	059	1/1/2003		No	link	3,984	I	Injection Well	WellLog	TEMP982123618
30-025-08050	CONOCOPHILLIPS COMPANY	LEA	S:20, T:17S, R:32E	MCA UNIT	257	1/1/2003		No	link	5,500	PO	Temporarily Abandoned	WellLog	TEMP1473447964
30-025-08051	CONOCOPHILLIPS COMPANY	LEA	S:20, T:17S, R:32E	MCA UNIT	331	1/1/2003	0	No	link	5,370	I	Injection Well	WellLog	TEMP1348789320
30-025-08052	CONOCOPHILLIPS COMPANY	LEA	S:20, T:17S, R:32E	MCA UNIT	253	1/1/2003		No	link	5,350	PO	Temporarily Abandoned	WellLog	TEMP1722765251
30-025-08054	CONOCOPHILLIPS COMPANY	LEA	S:20, T:17S, R:32E	MCA UNIT	048	1/1/2003		No	link		PI	Injection Well		TEMP1585409894

30-025-08058	CONOCOPHILLIPS COMPANY	LEA	S:20, T:17S, R:32E	MCA UNIT	051	1/1/2003		No	link	0	O	Temporarily Abandoned	Plugging	TEMP1559246968
30-025-08060	CONOCOPHILLIPS COMPANY	LEA	S:20, T:17S, R:32E	MCA UNIT	023	1/1/2003		No	link		O	Flowing		TEMP2067811561
30-025-08061	CONOCOPHILLIPS COMPANY	LEA	S:20, T:17S, R:32E	MCA UNIT	024	1/1/2003		No	link	0	I	Injection Well	Plugging	TEMP2093974486
30-025-08062	CONOCOPHILLIPS COMPANY	LEA	S:20, T:17S, R:32E	MCA UNIT	066	1/1/2003	0	No	link	0	O	Pumping	Permit	TEMP1825035005
30-025-08063	CONOCOPHILLIPS COMPANY	LEA	S:20, T:17S, R:32E	MCA UNIT	094	1/1/2003	0	No	link	0	I	Injection Well	Permit	TEMP1851197931
30-025-12755	CONOCOPHILLIPS COMPANY	LEA	S:20, T:17S, R:32E	MCA UNIT	096	1/1/2003	0	No	link	4,048	O	Active	WellLog	TEMP1529221230
30-025-12764	CONOCOPHILLIPS COMPANY	LEA	S:19, T:17S, R:32E	MCA UNIT	099	1/1/2003		No	link		PO	Temporarily Abandoned		TEMP1733522896
30-025-12771	CONOCOPHILLIPS COMPANY	LEA	S:20, T:17S, R:32E	MCA UNIT	061	1/1/2003		No	link	4,024	I	Injection Well	Plugging	TEMP1593089547
30-025-12772	CONOCOPHILLIPS COMPANY	LEA	S:20, T:17S, R:32E	MCA UNIT	064	1/1/2003		No	link		O	Plugged and Abandoned		TEMP1960909496
30-025-12804	CONOCOPHILLIPS COMPANY	LEA	S:28, T:17S, R:32E	MCA UNIT	113	1/1/2003	0	No	link	4,072	O	Pumping	WellLog	TEMP955560620
30-025-23673	CONOCOPHILLIPS COMPANY	LEA	S:19, T:17S, R:32E	MCA UNIT	264	1/1/2003	0	No	link	0	O	Active	Permit	TEMP180602882
30-025-23686	CONOCOPHILLIPS COMPANY	LEA	S:20, T:17S, R:32E	MCA UNIT	265	1/1/2003	0	No	link	0	O	Pumping	Permit	TEMP187217066
30-025-23687	CONOCOPHILLIPS COMPANY	LEA	S:20, T:17S, R:32E	MCA UNIT	266	1/1/2003	0	No	link	0	O	Active	Permit	TEMP44090476
30-025-23706	CONOCOPHILLIPS COMPANY	LEA	S:20, T:17S, R:32E	MCA UNIT	269	1/1/2003	0	No	link	0	O	Pumping	Permit	TEMP299178996
30-025-23715	CONOCOPHILLIPS COMPANY	LEA	S:20, T:17S, R:32E	MCA UNIT	271	1/1/2003		No	link	4,121	O	Pumping	WellLog	TEMP232617437
30-025-23732	CONOCOPHILLIPS COMPANY	LEA	S:19, T:17S, R:32E	MCA UNIT	276	1/1/2003	0	No	link	4,025	O	Pumping	WellLog	TEMP2132231549
30-025-23743	CONOCOPHILLIPS COMPANY	LEA	S:19, T:17S, R:32E	MCA UNIT	283	1/1/2003		No	link	4,075	O	Pumping	Completion	TEMP1929853628
30-025-23807	CONOCOPHILLIPS COMPANY	LEA	S:20, T:17S, R:32E	MCA UNIT	287	1/1/2003		No	link	4,120	O	Active	Completion	TEMP1581655873
30-025-23825	CONOCOPHILLIPS COMPANY	LEA	S:19, T:17S, R:32E	MCA UNIT	298	1/1/2003		No	link	4,082	PI	Injection Well	WellLog	TEMP1384388722
30-025-29956	CONOCOPHILLIPS COMPANY	LEA	S:20, T:17S, R:32E	MCA UNIT	372	1/1/2003	0	No	link	4,301	O	Pumping	WellLog	TEMP368157842
30-025-29967	CONOCOPHILLIPS COMPANY	LEA	S:20, T:17S, R:32E	MCA UNIT	374	1/1/2003	0	No	link	4,200	O	Active	WellLog	TEMP517825164
30-025-00589	CONOCOPHILLIPS COMPANY	LEA	S:17, T:17S, R:32E	MITCHELL B	011	1/1/2003	0	No	link	5,382	O	Pumping	WellLog	TEMP384332620
30-025-00590	CONOCOPHILLIPS COMPANY	LEA	S:17, T:17S, R:32E	MITCHELL B	010	1/1/2003	0	No	link	0	O	Pumping	Permit	TEMP410495545
30-025-08048	CONOCOPHILLIPS COMPANY	LEA	S:20, T:17S, R:32E	MITCHELL B	015	1/1/2003	0	No	link	0	O	Active	Permit	TEMP1743650484
30-025-27165	CONOCOPHILLIPS COMPANY	LEA	S:18, T:17S, R:32E	MITCHELL B	020	1/1/2003	0	No	link	4,200	O	Pumping	WellLog	TEMP1854842916
30-025-00751	CONOCOPHILLIPS COMPANY	LEA	S:28, T:17S, R:32E	QUEEN B	036	1/1/2003		No	link	10,005	O	Temporarily Abandoned	Completion	TEMP624124774
30-025-33584	CONOCOPHILLIPS COMPANY	LEA	S:20, T:17S, R:32E	ELVIS	001	1/1/2003		No	link	13,900	O	Pumping	Completion	TEMP724908205
30-025-33854	CONOCOPHILLIPS COMPANY	LEA	S:17, T:17S, R:32E	ELVIS	002	1/1/2003		No	link	14,000	O	Pumping	Completion	TEMP751071130
30-025-33949	CONOCOPHILLIPS COMPANY	LEA	S:20, T:17S, R:32E	ELVIS	004	1/1/2003		No	link	12,100	O	Active	Completion	TEMP480592653
30-025-08055	CONOCOPHILLIPS COMPANY	LEA	S:20, T:17S, R:32E	MITCHELL A	004	1/1/2003		No	link	4,129	G	Temporarily Abandoned	Completion	TEMP607584505

30-025-00751	CONOCOPHILLIPS COMPANY	LEA	S:28, T:17S, R:32E	QUEEN B	036	12/31/2002			No	link	10,005	O	Temporarily Abandoned	Completion	TEMP196946921
30-025-35814	MACK ENERGY CORPORATION or MACK ENERGY CORP	LEA	S:19, T:17S, R:32E	GC FEDERAL	001	11/29/2001			No	link	7,085	O	Pumping	Completion	TEMP1642498006
30-025-35813	MACK ENERGY CORPORATION or MACK ENERGY CORP	LEA	S:19, T:17S, R:32E	BC FEDERAL	007	11/28/2001			No	link	6,590	O	Active	WellLog	TEMP1734513133
30-025-35813	MACK ENERGY CORP	LEA	S:19, T:17S, R:32E	BC FEDERAL	007	10/31/2001			No	link	6,590	O	Active	WellLog	TEMP1233775605
30-025-35814	MACK ENERGY CORP	LEA	S:19, T:17S, R:32E	GC FEDERAL	001	10/31/2001			No	link	7,085	O	Pumping	Completion	TEMP1143374938
30-025-35652	MACK ENERGY CORP	LEA	S:19, T:17S, R:32E	BC FEDERAL	6	8/2/2001	6,000		Yes	link	7,562	O	Pumping	Completion	TEMP1941188934
30-025-35481	MACK ENERGY CORP	LEA	S:19, T:17S, R:32E	BC FEDERAL	004	2/23/2001			No	link	5,600	O	Pumping	WellLog	TEMP947828571
30-025-08057	CONOCO, INC.	LEA	S:20, T:17S, R:32E	MCA UNIT	050	5/3/2000			No	link		I	Temporarily Abandoned		TEMP1778985407
30-025-08066	CONOCO, INC.	LEA	S:20, T:17S, R:32E	MCA UNIT	063	4/27/2000			No	link	4,027	O	Temporarily Abandoned	Completion	TEMP1555061547
30-025-00758	CONOCO, INC.	LEA	S:29, T:17S, R:32E	MCA UNIT	110	4/24/2000			No	link		O	Temporarily Abandoned		TEMP572660046
30-025-34933	MACK ENERGY CORP	LEA	S:21, T:17S, R:32E	MC FEDERAL	004	2/17/2000			No	link	5,982	O	Pumping	Completion	TEMP946554064
30-025-34932	MACK ENERGY CORP	LEA	S:20, T:17S, R:32E	BC FEDERAL	003	1/13/2000			No	link	7,028	O	Pumping	Completion	TEMP932318355
30-025-34713	MACK ENERGY CORP	LEA	S:20, T:17S, R:32E	BC FEDERAL	002	9/22/1999			No	link	7,055	O	Pumping	Completion	TEMP1278714958
30-025-34733	MACK ENERGY CORP	LEA	S:20, T:17S, R:32E	BC FEDERAL	001	9/21/1999			No	link	5,900	O	Pumping	Completion	TEMP1514566034
30-025-08064	CONOCO, INC.	LEA	S:20, T:17S, R:32E	MCA UNIT	065	12/15/1998	0		No	link	0	I	Injection Well	Permit	TEMP1878250623
30-015-29152	DEVON ENERGY PRODUCTION COMPANY, LP	EDDY	S:20, T:17S, R:32E	TURNER B	125	3/24/1998			No	link		PO	Unknown		TEMP1678126835
30-025-35715	I & W INC	LEA	S:30, T:17S, R:32E	BRINE STATION	529	5/5/1997			No	link		G	Active		TEMP1206687960
30-025-08053	CONOCO, INC.	LEA	S:20, T:17S, R:32E	MCA UNIT	303	9/5/1996			No	link	13,965	I	Injection Well	WellLog	TEMP1901720306
30-025-08056	CONOCO, INC.	LEA	S:20, T:17S, R:32E	MCA UNIT	049	8/17/1996	0		No	link	0	O	Pumping	Permit	TEMP2016375478
30-025-00752	CONOCO, INC.	LEA	S:29, T:17S, R:32E	MCA UNIT	112	8/14/1996			No	link	4,072	O	Pumping	WellLog	TEMP1792314060
30-025-20231	CONOCO, INC.	LEA	S:20, T:17S, R:32E	MCA UNIT	258	7/25/1996			No	link	5,445	O	Pumping	WellLog	TEMP1615228516
30-025-08032	CONOCO, INC.	LEA	S:19, T:17S, R:32E	MCA UNIT	259	7/23/1996			No	link		O	Pumping		TEMP940232805
30-025-08043	CONOCO, INC.	LEA	S:19, T:17S, R:32E	MCA UNIT	101	9/26/1995			No	link		O	Pumping		TEMP837120100
30-025-23660	CONOCO, INC.	LEA	S:21, T:17S, R:32E	MCA UNIT	262	9/14/1995			No	link	4,130	I	Pumping	WellLog	TEMP566268744
30-025-00577	MACK ENERGY CORP	LEA	S:16, T:17S, R:32E	EDWARD STATE	003	9/28/1994			No	link		G	Active		TEMP1977055591
30-025-00568	CONOCO, INC.	LEA	S:17, T:17S, R:32E	MCA UNIT	007	1/25/1990			No	link		O	Active		TEMP1865831748
30-025-00597	CONOCO, INC.	LEA	S:17, T:17S, R:32E	MCA UNIT	006	1/25/1990			No	link		O	Active		TEMP760110144
30-025-00591	CONOCO, INC.	LEA	S:17, T:17S, R:32E	MITCHELL B	007	10/25/1989			No	link	4,336	O	Active	WellLog	TEMP964796559
30-025-00593	CONOCO, INC.	LEA	S:17, T:17S, R:32E	MITCHELL B	008	10/25/1989			No	link	4,200	O	Active	WellLog	TEMP1067139766
30-025-08024	CONOCO, INC.	LEA	S:18, T:17S, R:32E	MITCHELL B	005	10/25/1989			No	link	4,200	O	Active	WellLog	TEMP1226101238
30-025-26011	STEVENS OPERATING CORPORATION or HANAGAN PETROLEUM CORP	LEA	S:20, T:17S, R:32E	PRE-ONGARD WELL	358	1/1/1970			No	link		PO	Active Permit		TEMP201405038
	STEVENS														

30-025-27476	OPERATING CORPORATION or HANAGAN PETROLEUM CORP	LEA	S:17, T:17S, R:32E	PRE-ONGARD WELL	021	1/1/1970		No	link	PO	Active Permit	TEMP127421764
--------------	---	-----	--------------------	-----------------	-----	----------	--	----	------	----	---------------	---------------





Data use subject to license.

© DeLorme. XMap® 7.

www.delorme.com

