

DISTRICT I  
1625 N. FRENCH DR., HOHHS, NM 88240

DISTRICT II  
1301 W. GRAND AVENUE, ARTESIA, NM 88210

DISTRICT III  
1000 RIO BRAZOS RD., AZTEC, NM 87410

DISTRICT IV  
11885 S. ST. FRANCIS DR., SANTA FE, NM 87505

State of New Mexico  
Energy, Minerals and Natural Resources Department

OIL CONSERVATION DIVISION  
11885 SOUTH ST. FRANCIS DR.  
Santa Fe, New Mexico 87505

Form C-102  
Revised October 12, 2005  
Submit to Appropriate District Office  
State Lease - 4 Copies  
Fee Lease - 3 Copies

WELL LOCATION AND ACREAGE DEDICATION PLAT

☐ AMENDED REPORT

API Number 30-025 40100	Pool Code 60240	Pool Name Tubb Oil & Gas (Oil)
Property Code 306629	Property Name WILLIAM TURNER	Well Number 13
OGRID No. 873	Operator Name APACHE CORPORATION	Elevation 3469'

Surface Location

UL or lot No. J	Section 29	Township 21-S	Range 37-E	Lot Idn	Feet from the 1380	North/South line SOUTH	Feet from the 1332	East/West line EAST	County LEA
--------------------	---------------	------------------	---------------	---------	-----------------------	---------------------------	-----------------------	------------------------	---------------

Bottom Hole Location If Different From Surface

UL or lot No.	Section	Township	Range	Lot Idn	Feet from the	North/South line	Feet from the	East/West line	County
Dedicated Acres 40	Joint or Infill	Consolidation Code	Order No. NSL-6351						

NO ALLOWABLE WILL BE ASSIGNED TO THIS COMPLETION UNTIL ALL INTERESTS HAVE BEEN CONSOLIDATED  
OR A NON-STANDARD UNIT HAS BEEN APPROVED BY THE DIVISION

<p>GEODETIC COORDINATES NAD 27 NME SURFACE LOCATION  Y=527999.4 N X=855675.2 E  LAT.=32.446304° N LONG.=103.180388° W  LAT.=32°26'47"N LONG.=103°10'49"W</p>				<p>OPERATOR CERTIFICATION  I hereby certify that the information herein is true and complete to the best of my knowledge and belief, and that this organization either owns a working interest or unleased mineral interest in the land including the proposed bottom hole location or has a right to drill this well at this location pursuant to a contract with an owner of such mineral or working interest, or to a voluntary pooling agreement or a compulsory pooling order heretofore entered by the division.</p> <p><i>Vicki Brown</i> 3/31/11 Signature Date Vicki Brown Printed Name</p>	
<p>SURVEYOR CERTIFICATION  I hereby certify that the well location shown on this plat was plotted from field notes of actual surveys made by me or under my supervision, and that the same is true and correct to the best of my belief.</p> <p>DECEMBER 22, 2010</p> <p>Date Surveyed DSS Signature &amp; Seal of Professional Surveyor <i>Gary G. Gibson</i> 12/22/2010 Cert. State No. GARY G. GIBSON 12641 RQMALD S. GIBSON 3239</p>					

DISTRICT I  
1625 N. FRENCH DR., HOBBS, NM 88240

DISTRICT II  
1301 W. GRAND AVENUE, ARTESIA, NM 88210

DISTRICT III  
1000 RIO BRAZOS RD., AZTEC, NM 87410

DISTRICT IV  
11885 S. ST. FRANCIS DR., SANTA FE, NM 87505

State of New Mexico  
Energy, Minerals and Natural Resources Department

OIL CONSERVATION DIVISION  
11885 SOUTH ST. FRANCIS DR.  
Santa Fe, New Mexico 87505

Form C-102  
Revised October 12, 2005  
Submit to Appropriate District Office  
State Lease - 4 Copies  
Fee Lease - 3 Copies

WELL LOCATION AND ACREAGE DEDICATION PLAT

☐ AMENDED REPORT

API Number <b>30-025 40100</b>	Pool Code <b>66660</b>	Pool Name <b>Blinebry Oil &amp; Gas (Oil)</b>
Property Code <b>306629</b>	Property Name <b>WILLIAM TURNER</b>	Well Number <b>13</b>
OGRID No. <b>873</b>	Operator Name <b>APACHE CORPORATION</b>	Elevation <b>3469'</b>

Surface Location

UT. or lot No. <b>J</b>	Section <b>29</b>	Township <b>21-S</b>	Range <b>37-E</b>	Lot Idn	Feet from the <b>1380</b>	North/South line <b>SOUTH</b>	Feet from the <b>1332</b>	East/West line <b>EAST</b>	County <b>LEA</b>
----------------------------	----------------------	-------------------------	----------------------	---------	------------------------------	----------------------------------	------------------------------	-------------------------------	----------------------

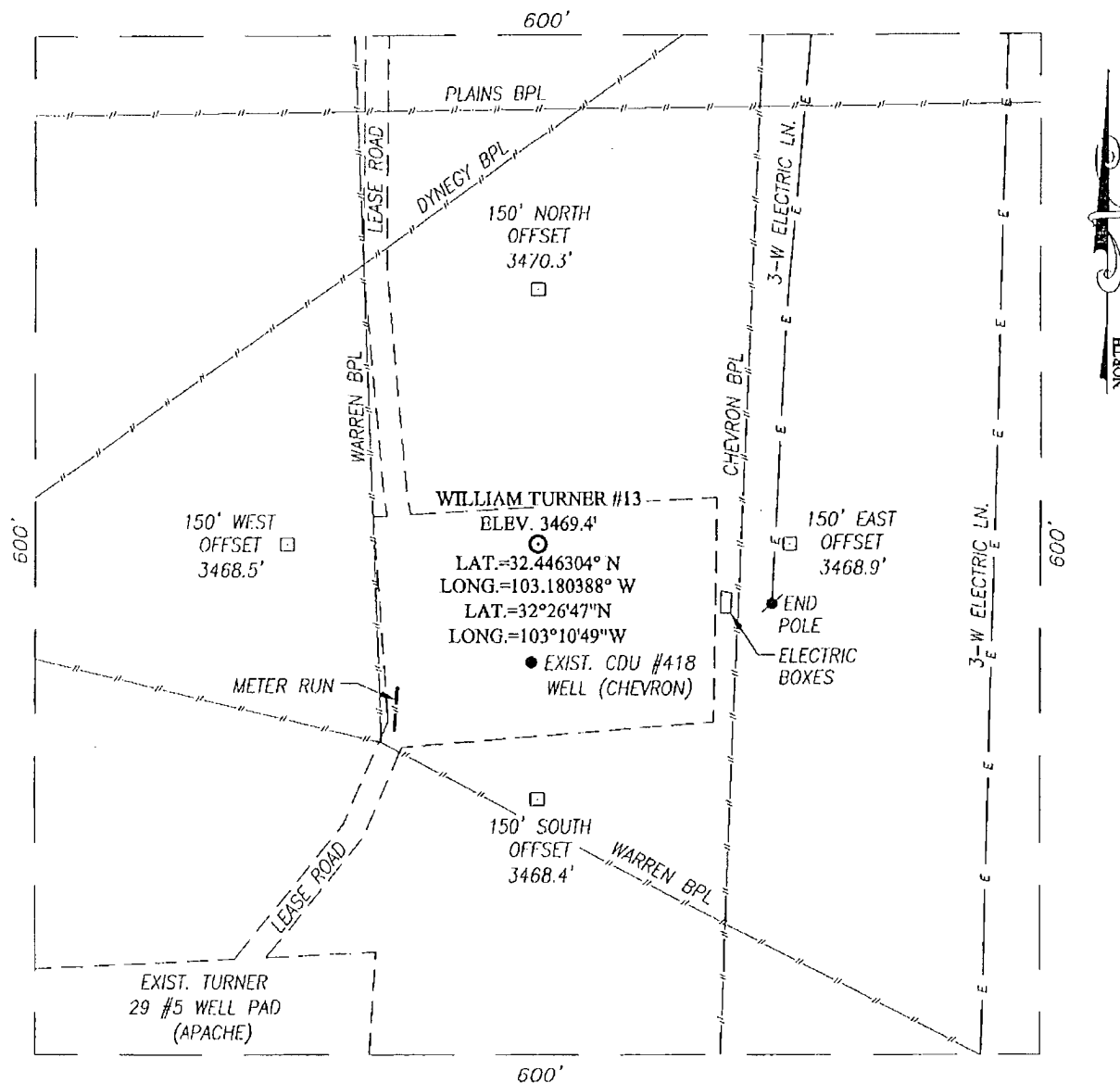
Bottom Hole Location If Different From Surface

UL or lot No.	Section	Township	Range	Lot Idn	Feet from the	North/South line	Feet from the	East/West line	County
Dedicated Acres <b>40</b>	Joint or Infill	Consolidation Code	Order No. <b>NSL-6351</b>						

NO ALLOWABLE WILL BE ASSIGNED TO THIS COMPLETION UNTIL ALL INTERESTS HAVE BEEN CONSOLIDATED  
OR A NON-STANDARD UNIT HAS BEEN APPROVED BY THE DIVISION

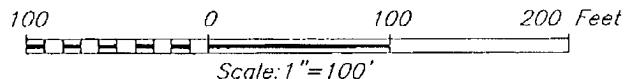
<p>GEODETIC COORDINATES NAD 27 NME SURFACE LOCATION</p> <p>Y=527999.4 N X=855675.2 E</p> <p>LAT.=32.446304° N LONG.=103.180388° W</p> <p>LAT.=32°26'47"N LONG.=103°10'49"W</p>	<p>OPERATOR CERTIFICATION</p> <p>I hereby certify that the information herein is true and complete to the best of my knowledge and belief, and that this organization either owns a working interest or unleased mineral interest in the land including the proposed bottom hole location or has a right to drill this well at this location pursuant to a contract with an owner of such mineral or working interest, or to a voluntary pooling agreement or a compulsory pooling order heretofore entered by the division.</p> <p><i>Vicki Brown</i> 3/3/11 Signature Date <b>VICKI BROWN</b> Printed Name</p> <p>SURVEYOR CERTIFICATION</p> <p>I hereby certify that the well location shown on this plat was plotted from field notes of actual surveys made by me or under my supervision, and that the same is true and correct to the best of my belief.</p> <p>DECEMBER 22, 2010</p> <p>Date Surveyed Signature &amp; Seal of Professional Surveyor <i>Ronald J. Edison</i> 10/11/2011 10-11-1842</p> <p>Certificate No. GARY O. EDISON 12641 RONALD J. EDISON 3239</p>
--	---

SECTION 29, TOWNSHIP 21 SOUTH, RANGE 37 EAST, N.M.P.M.,  
LEA COUNTY NEW MEXICO



DIRECTIONS TO LOCATION

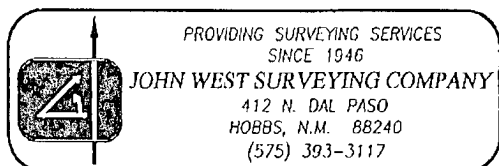
FROM THE INTERSECTION ST. HWY. #8 AND CO. RD. #E33 (TURNER RD.), GO NORTH ON CO. RD. #E33 APPROX. 0.4 MILES. TURN LEFT AND GO WEST APPROX. 0.25 MILES. TURN LEFT AND GO SOUTH APPROX. 0.1 MILE. THIS LOCATION IS APPROX. 100 FEET EAST ON THE EXISTING CHEVRON CDU #418 WELL PAD.



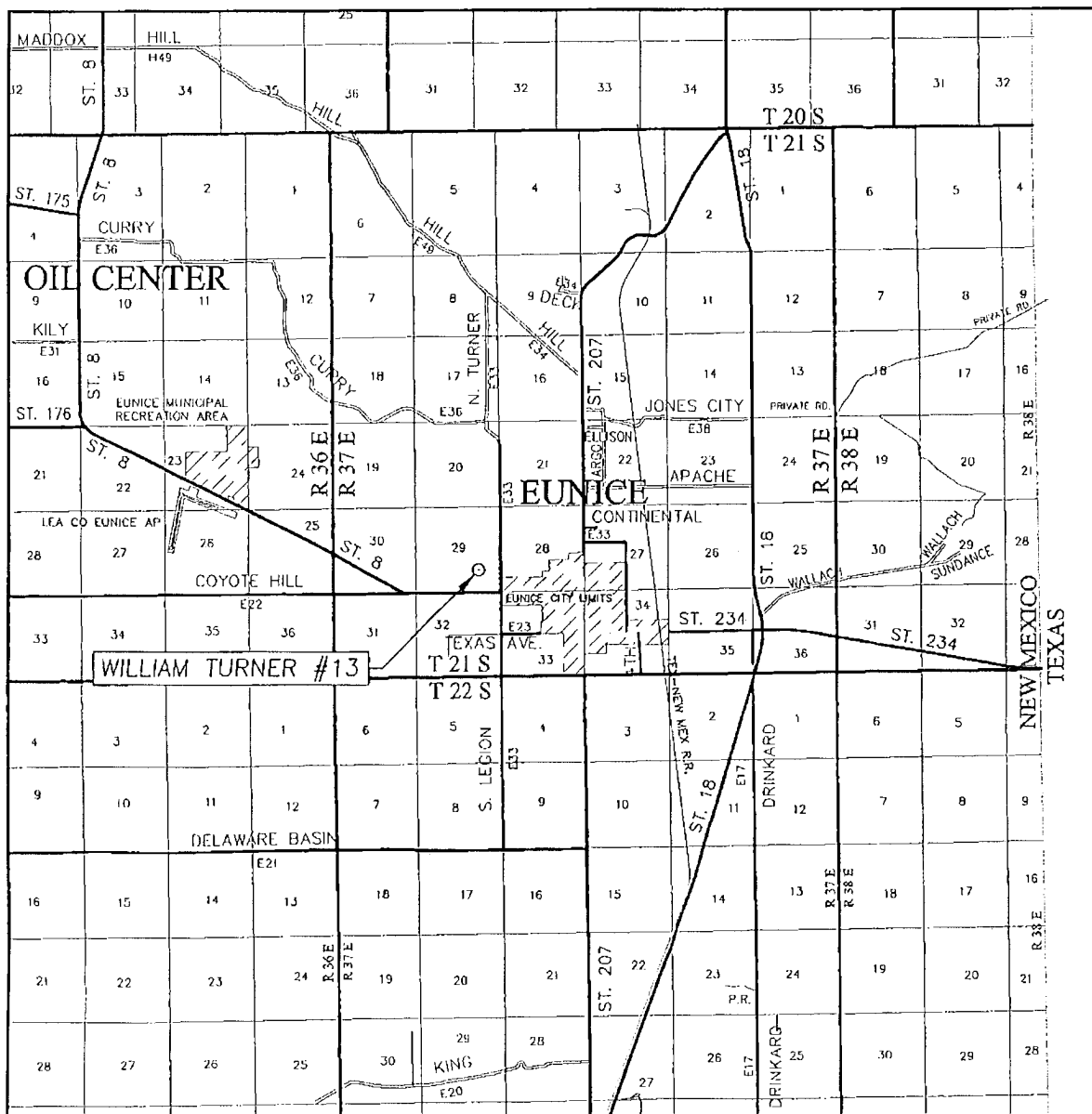
APACHE CORPORATION

WILLIAM TURNER #13 WELL  
LOCATED 1380 FEET FROM THE SOUTH LINE  
AND 1332 FEET FROM THE EAST LINE OF SECTION 29,  
TOWNSHIP 21 SOUTH, RANGE 37 EAST, N.M.P.M.,  
LEA COUNTY, NEW MEXICO.

Survey Date: 12/22/10	Sheet 1 of 1 Sheets
W.O. Number: 10.11.1841	Dr By: DSS
Date: 1/4/10	10111841
	Scale: 1"=100'



**North**



SEC. 29 TWP. 21-S RGE. 37-E

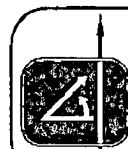
COUNTY LEA STATE NEW MEXICO

DESCRIPTION 1380' FSL & 1332' FEL

ELEVATION 3469'

OPERATOR APACHE CORPORATION

LEASE WILLIAM TURNER

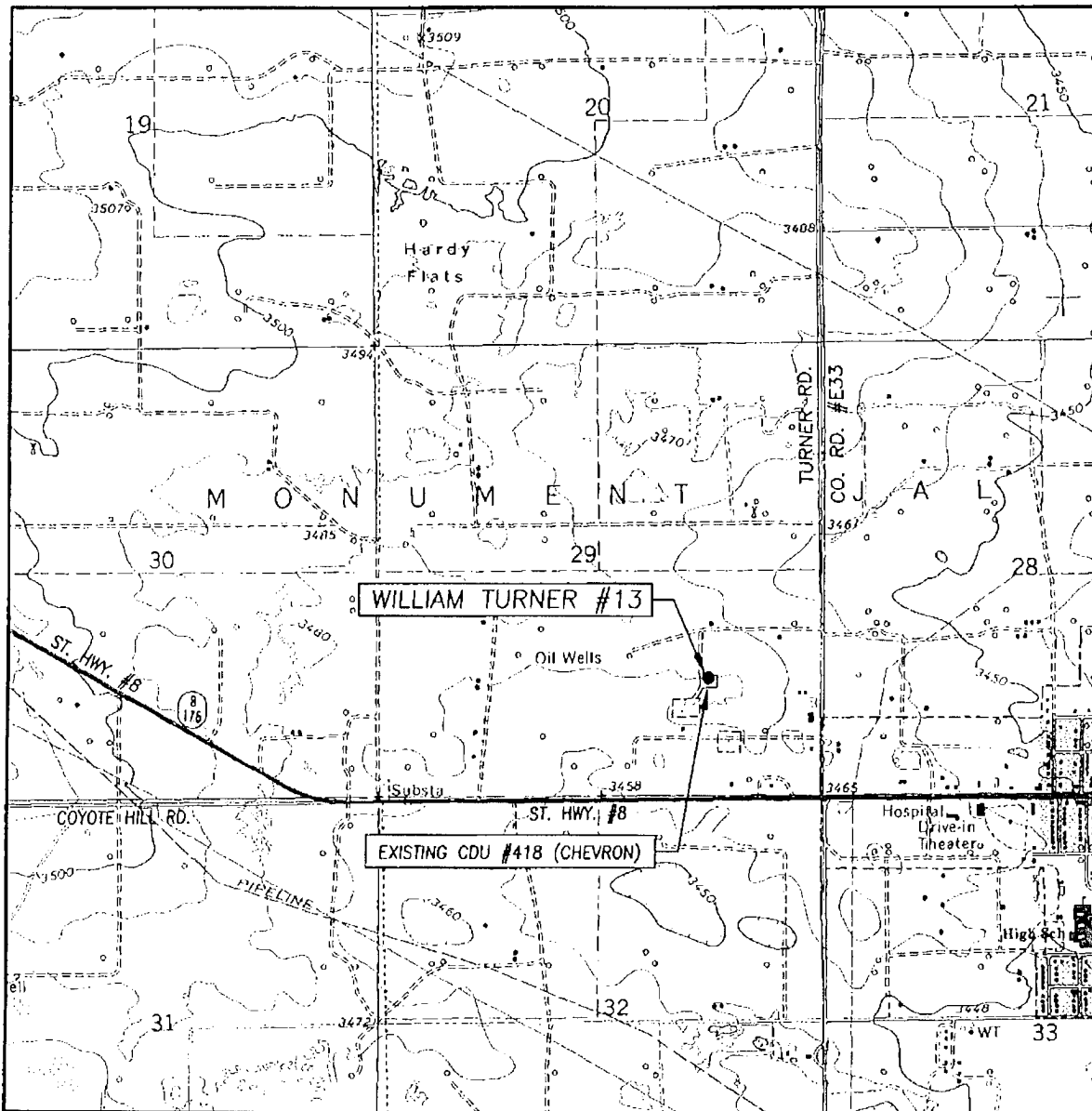


PROVIDING SURVEYING SERVICES  
SINCE 1946

JOHN WEST SURVEYING COMPANY

412 N. DAL PASO  
HOBBS, N.M. 88240  
(575) 393-3117

# LOCATION VERIFICATION MAP



SCALE: 1" = 2000'

CONTOUR INTERVAL:  
EUNICE, N.M. -- 10'

SEC. 29 TWP. 21-S RGE. 37-E

SURVEY N.M.P.M.

COUNTY LEA STATE NEW MEXICO

DESCRIPTION 1380' FSL & 1332' FEL

ELEVATION 3469'

OPERATOR APACHE CORPORATION

LEASE WILLIAM TURNER

U.S.G.S. TOPOGRAPHIC MAP

EUNICE, N.M.

