

BL

DISTRICT I
1625 N. French Dr., Hobbs, NM 88240

DISTRICT II
1301 W. Grand Avenue, Artesia, NM 86210

DISTRICT III
1000 Rio Brazos Rd., Aztec, NM 87410

DISTRICT IV
1220 S. St. Francis Dr., Santa Fe, NM 87505

State of New Mexico
Energy, Minerals and Natural Resources Department

Form C-102
Revised July 10, 2010

Submit one copy to appropriate
District Office

OIL CONSERVATION DIVISION
1220 South St. Francis Dr.
Santa Fe, New Mexico 87505

WELL LOCATION AND ACREAGE DEDICATION PLAT

☐ AMENDED REPORT

API Number 30-025-401D2	Pool Code 2603971019	Pool Name Wildcat; Group 6 A6D
Property Code 38561	Property Name DOS	Well Number 1H
OGRID No. 873	Operator Name APACHE CORPORATION	Elevation 4144'

Surface Location

UL or lot No.	Section	Township	Range	Lot Idn	Feet from the	North/South line	Feet from the	East/West line	County
M	29	14 S	34 E		430	SOUTH	330	WEST	LEA

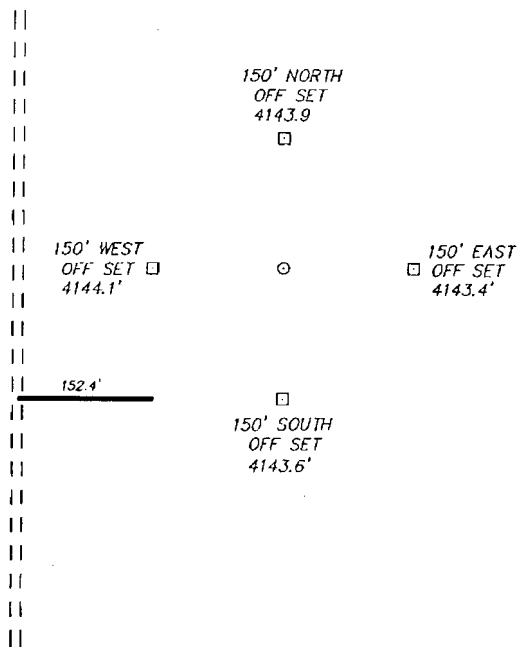
Bottom Hole Location If Different From Surface

UL or lot No.	Section	Township	Range	Lot Idn	Feet from the	North/South line	Feet from the	East/West line	County
P	29	14 S	34 E		430	SOUTH	330	EAST	LEA
Dedicated Acres 160	Joint or Infill	Consolidation Code	Order No.						

NO ALLOWABLE WILL BE ASSIGNED TO THIS COMPLETION UNTIL ALL INTERESTS HAVE BEEN CONSOLIDATED
OR A NON-STANDARD UNIT HAS BEEN APPROVED BY THE DIVISION

<p>SURFACE LOCATION Lat - N 33°04'10.22" Long - W 103°32'26.70" NMSPC - N 753740.678 E 784137.078 (NAD-83)</p> <p>SURFACE LOCATION Lat - N 33°04'09.78" Long - W 103°32'24.88" NMSPC - N 753674.306 E 742960.137 (NAD-27)</p>		<p>PROPOSED BOTTOM HOLE LOCATION Lat - N 33°04'10.26" Long - W 103°31'32.35" NMSPC - N 753780.037 E 788762.114 (NAD-83)</p> <p>PROPOSED BOTTOM HOLE LOCATION Lat - N 33°04'09.83" Long - W 103°31'30.53" NMSPC - N 753713.623 E 747585.219 (NAD-27)</p>	
<p>33.069386 103.540244</p>		<p>33.069397 103.525147</p>	
<p>OPERATOR CERTIFICATION I hereby certify that the information contained herein is true and complete to the best of my knowledge and belief, and that this organization either owns a working interest or unleased mineral interest in the land including the proposed bottom hole location or has a right to drill this well at this location pursuant to a contract with an owner of such a mineral or working interest, or to a voluntary pooling agreement or a compulsory pooling order heretofore entered by the Division.</p> <p>Sorina L. Flores 3/30/11 Signature Date Sorina L. Flores Printed Name sorina.flores@apachecorp.com Email Address</p>		<p>SURVEYOR CERTIFICATION I hereby certify that the well location shown on this plat was plotted from field notes of actual surveys made by me or under my supervision and that the same is true and correct to the best of my belief.</p> <p>GARY L. JONES Date Surveyed Signature & Seal of Professional Surveyor Certificate No. Gary L. Jones 7977 BASIN SURVYS 24376</p>	

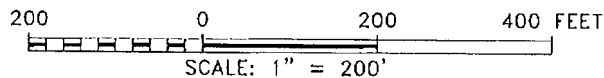
SECTION 29, TOWNSHIP 14 SOUTH, RANGE 34 EAST, N.M.P.M.,
LEA COUNTY, NEW MEXICO.



APACHE CORPORATION
DOS #1H
ELEV. - 4144'

Lat - N 33°04'10.22"
Long - W 103°32'26.70"
NMSPCE- N 753740.678
E 784137.078
(NAD-83)

Lat - N 33°04'09.79"
Long - W 103°32'24.88"
NMSPCE- N 753674.306
E 742960.137
(NAD-27)



Directions to Location:

FROM THE JUNCTION OF STATE HWY 457 AND
WARREN, GO EAST ON LEASE ROAD FOR 1.5 MILES
TO LEASE ROAD, ON LEASE ROAD GO SOUTH 1.0
MILES TURNING EAST 1.9 MILES TO LEASE ROAD, ON
LEASE ROAD GO NORTH 2.1 MILES TO PROPOSED
LEASE ROAD.

APACHE CORPORATION

REF: DOS #1H / WELL PAD TOPO

THE DOS #1H LOCATED 430'

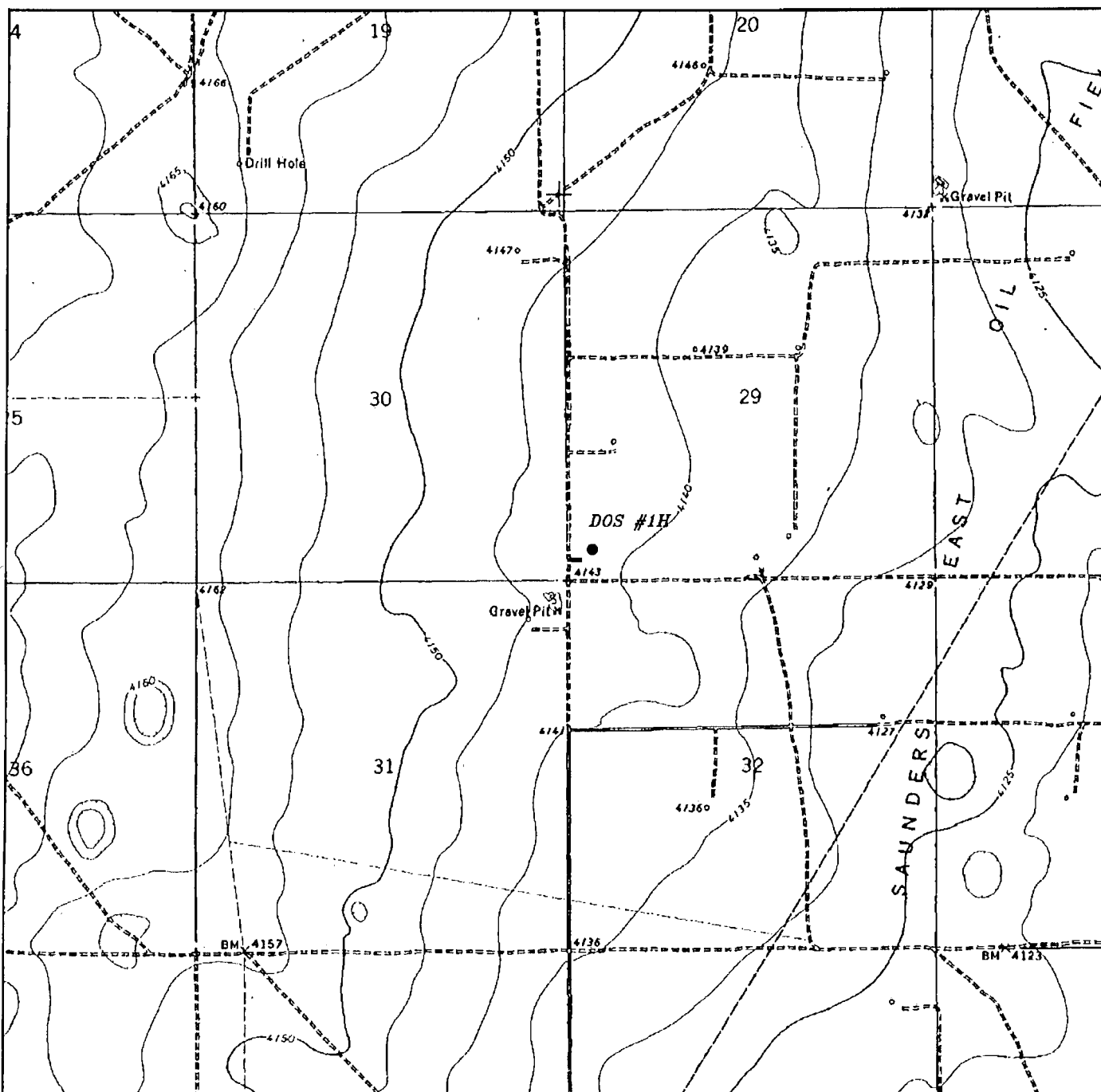
FROM THE SOUTH LINE AND 330' FROM THE WEST LINE OF
SECTION 29, TOWNSHIP 14 SOUTH, RANGE 34 EAST,
N.M.P.M., LEA COUNTY, NEW MEXICO.

BASIN SURVEYS P.O. BOX 1786--HOBBS, NEW MEXICO

W.O. Number: 24376 Drawn By: J. SMALL

Date: 03-29-2011 Disk: JMS 24376

Survey Date: 03-28-2011 Sheet 1 of 1 Sheets



DOS #1H

Located 430' FSL and 330' FWL

Section 29, Township 14 South, Range 34 East,
N.M.P.M., Lea County, New Mexico.

basin
surveys

focused on excellence
in the oilfield

P.O. Box 1786
1120 N. West County Rd.
Hobbs, New Mexico 88241
(575) 393-7316 - Office
(575) 392-2206 - Fax
basinsurveys.com

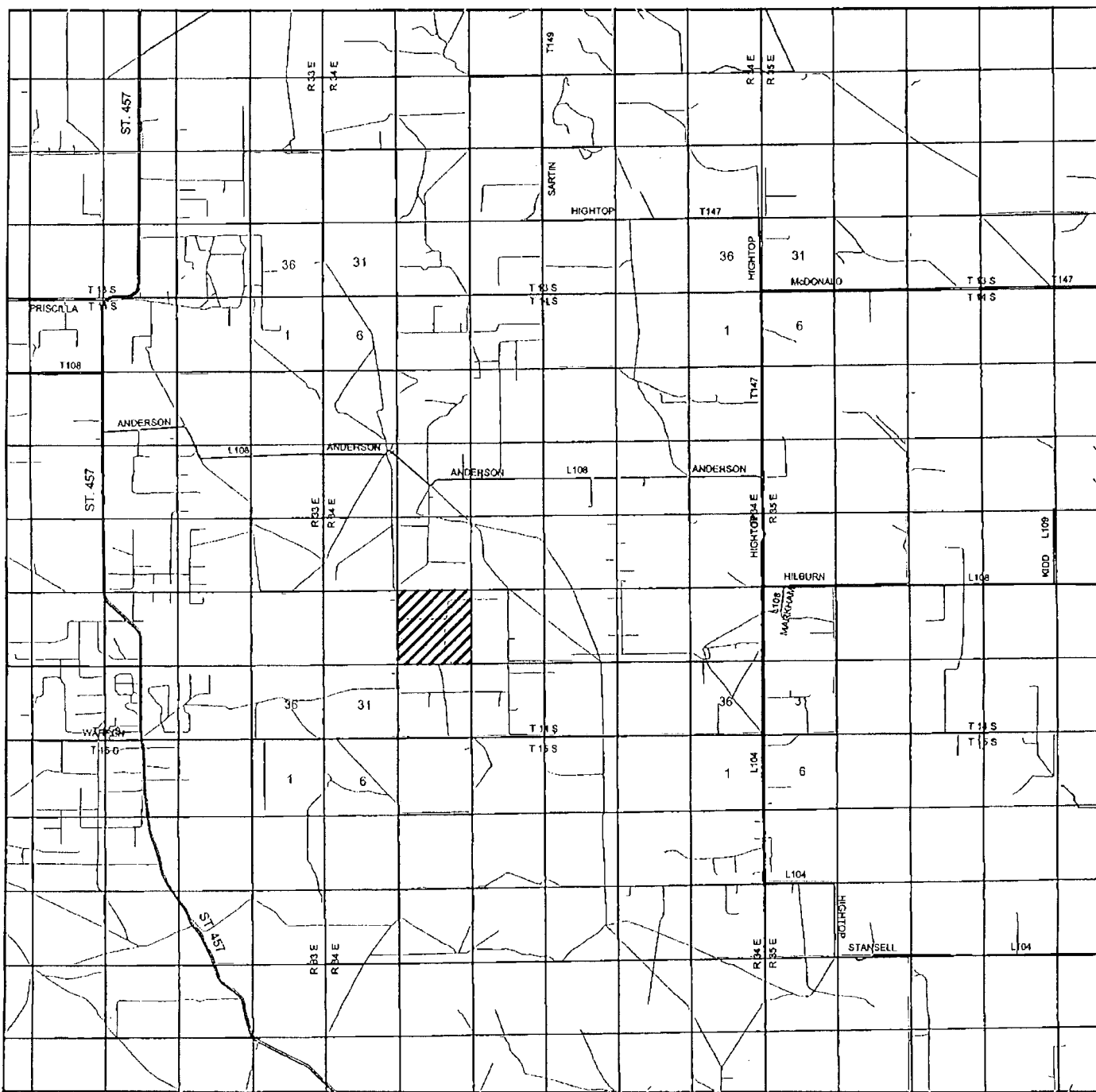
W.O. Number: JMS 24376

Survey Date: 03-28-2011

Scale: 1" = 2000'

Date: 03-29-2011

APACHE
CORPORATION



DOS #1H

Located 430' FSL and 330' FWL

Section 29, Township 14 South, Range 34 East,
N.M.P.M., Lea County, New Mexico.

basin
surveys

focused on excellence
in the oilfield

P.O. Box 1786
1120 N. West County Rd.
Hobbs, New Mexico 88241
(575) 393-7316 - Office
(575) 392-2206 - Fax
basinsurveys.com

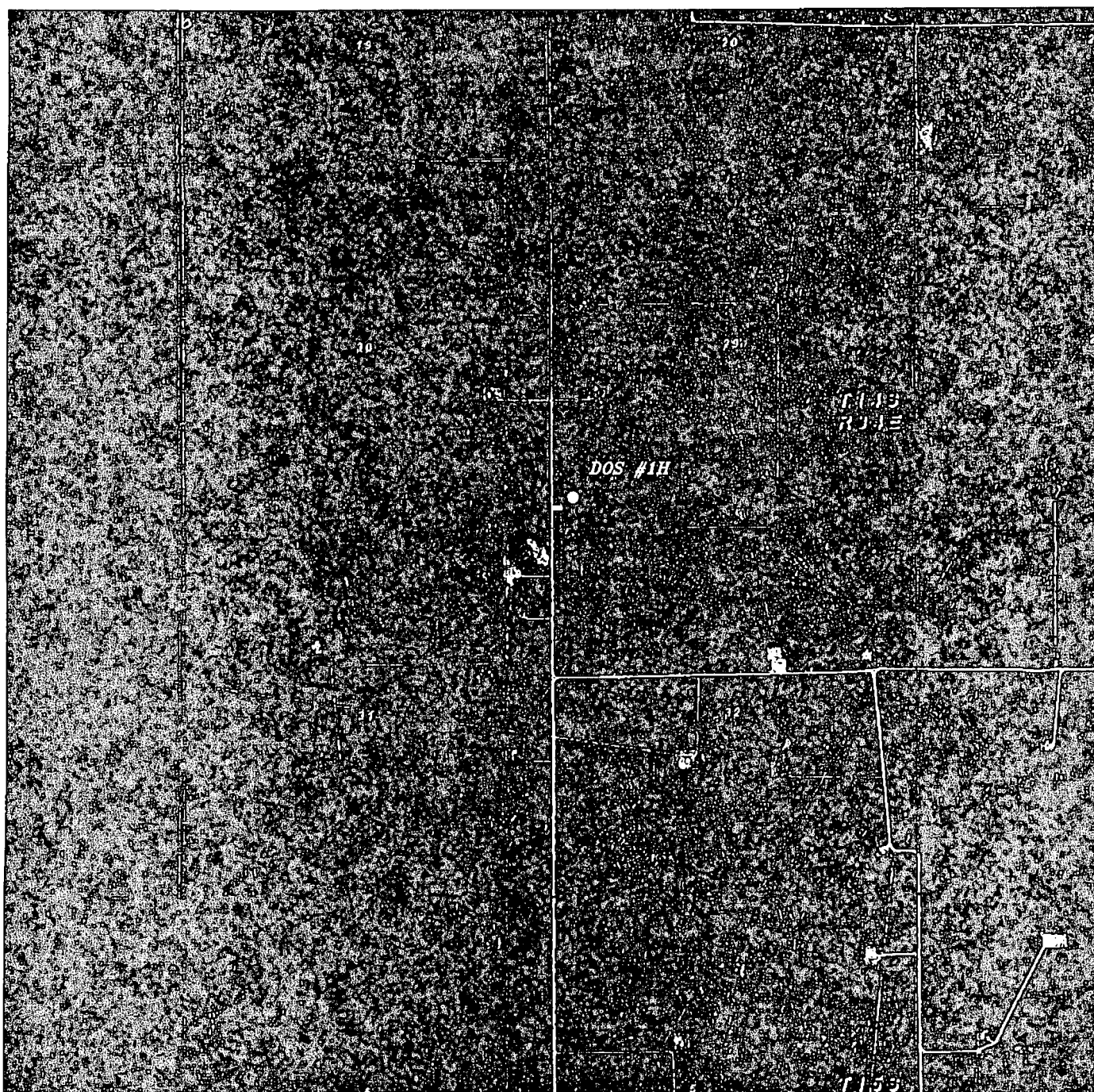
W.O. Number: JMS 24376

Survey Date: 03-28-2011

Scale: 1" = 2 Miles

Date: 03-29-2011

APACHE
CORPORATION



DOS #1H

Located 430' FSL and 330' FWL

Section 29, Township 14 South, Range 34 East,
N.M.P.M., Lea County, New Mexico.

basin
surveys
focused on excellence
in the oilfield

P.O. Box 1786
1120 N. West County Rd.
Hobbs, New Mexico 88241
(575) 393-7316 - Office
(575) 392-2206 - Fax
basinsurveys.com

W.O. Number: JMS 24376

Scale: 1" = 2000'

YELLOW TINT - USA LAND
BLUE TINT - STATE LAND
NATURAL COLOR - FEE LAND

APACHE
CORPORATION