

DISTRICT I

1625 N. French Dr., Hobbs, NM 88240

State of New Mexico

Energy, Minerals and Natural Resources Department

Form C-101

Revised March 17, 1999

Instructions on back

Submit to appropriate District Office

DISTRICT II

811 South First, Artesia, NM 88210

OIL CONSERVATION DIVISION

PO BOX 2088

Santa Fe, NM 87504-2088

State Lease - 6 Copies

Fee Lease - 5 Copies

DISTRICT III

1000 Rio Brazos Rd., Aztec, NM 87410

DISTRICT IV

2040 South Pacheco, Santa Fe, NM 87501

☐ AMENDED REPORT

APPLICATION FOR PERMIT TO DRILL, RE-ENTER, DEEPEN, PLUGBACK, OR ADD A ZONE

Operator Name and Address Yates Petroleum Corporation 105 South Fourth Street Artesia, New Mexico 88210		OGRID Number 025575
		API Number 30- 025- 36619
Property Code 29586	Property Name Dotson BAN	Well No. 1

7 Surface Location

UL or lot no.	Section	Township	Range	Lot Idn	Feet from the	North/South Line	Feet from the	East/West Line	County
F	17	15S	35E		1650'	North	1980'	West	Lea

8 Proposed Bottom Hole Location If Different From Surface

UL or lot no.	Section	Township	Range	Lot Idn	Feet from the	North/South Line	Feet from the	East/West Line	County
Proposed Pool 1 Wildcat Mississippian					Proposed Pool 2				

Work Type Code N	Well Type Code G	Cable/Rotary R	Lease Type Code P	Ground Level Elevation 4022'
Multiple No	Proposed Depth 13,450'	Formation Mississippian	Contractor Not Determined	Spud Date ASAP

21 Proposed Casing and Cement Program

Hole Size	Casing Size	Casing weight/feet	Setting Depth	Sacks of Cement	Estimated TOC
17 1/2"	13 3/8"	48#	400'	400 sx	Surface
12 1/4"	9 5/8"	36 & 40#	6200'	1700 sx	Surface
8 3/4"	5 1/2"	17# & 20#	13,450'	950 sx	TOC-9100'

22 Describe the proposed program. If this application is to DEEPEN or PLUG BACK give the data on the present productive zone and proposed new productive zone. Describe the blowout prevention program, if any. Use additional sheets if necessary.

Yates Petroleum Corporation proposes to drill and test the Mississippian and intermediate formations. Approximately 400' of surface casing will be set and cement circulated. Intermediate casing will be set at 6200' and cemented and circulated to surface. If commercial, production casing will be run and cemented, will perforate and stimulate as needed for production.

MUD PROGRAM: 0-400' FW/Gel/Paper; 400'-6200' FW going to Brine; 6200'-11600' Cut Brine w/Sweeps; 11600'-13450' Salt Gel/Starch/Driscap.

BOPE PROGRAM: A 5000# BOPE will be installed on the 9 5/8" casing and tested daily for operational.

23 I hereby certify that the information given above is true and complete to the best of my knowledge and belief. Signature: <i>Clifton R. May</i>		OIL CONSERVATION DIVISION	
Printed name: Clifton R. May		Approved by: <i>Paul F. Kuyt</i>	
Title: Regulatory Agent/Land Department		Title: PETROLEUM ENGINEER	
Date: 02/27/04	email: debbiec@ypcnm.com	Approval Date: MAR 03 2004	Expiration Date:
Phone: (505) 748-1471		Conditions of Approval Attached <input type="checkbox"/>	

Permit Expires 1 Year From Approval
Date Unless Drilling Underway

DISTRICT I
1626 N. French Dr., Hobbs, NM 88240
DISTRICT II
511 South First, Artesia, NM 88210

DISTRICT III
1000 Rio Brazos Rd., Aztec, NM 87410

DISTRICT IV
2040 South Pacheco, Santa Fe, NM 87505

State of New Mexico
Energy, Minerals and Natural Resources Department

Form C-102
Revised March 17, 1999
Instruction on back
Submit to Appropriate District Office
State Lease - 4 Copies
Fee Lease - 3 Copies

OIL CONSERVATION DIVISION
P.O. Box 2088
Santa Fe, New Mexico 87504-2088

☐ AMENDED REPORT

WELL LOCATION AND ACREAGE DEDICATION PLAT

API Number 30-025-36619	Pool Code 97172	Pool Name Wildcat Mississippian
Property Code 025575-29586	Property Name DOTSON "BAN"	Well Number 1
OGRID No. 25575	Operator Name YATES PETROLEUM CORPORATION	Elevation 4022

Surface Location

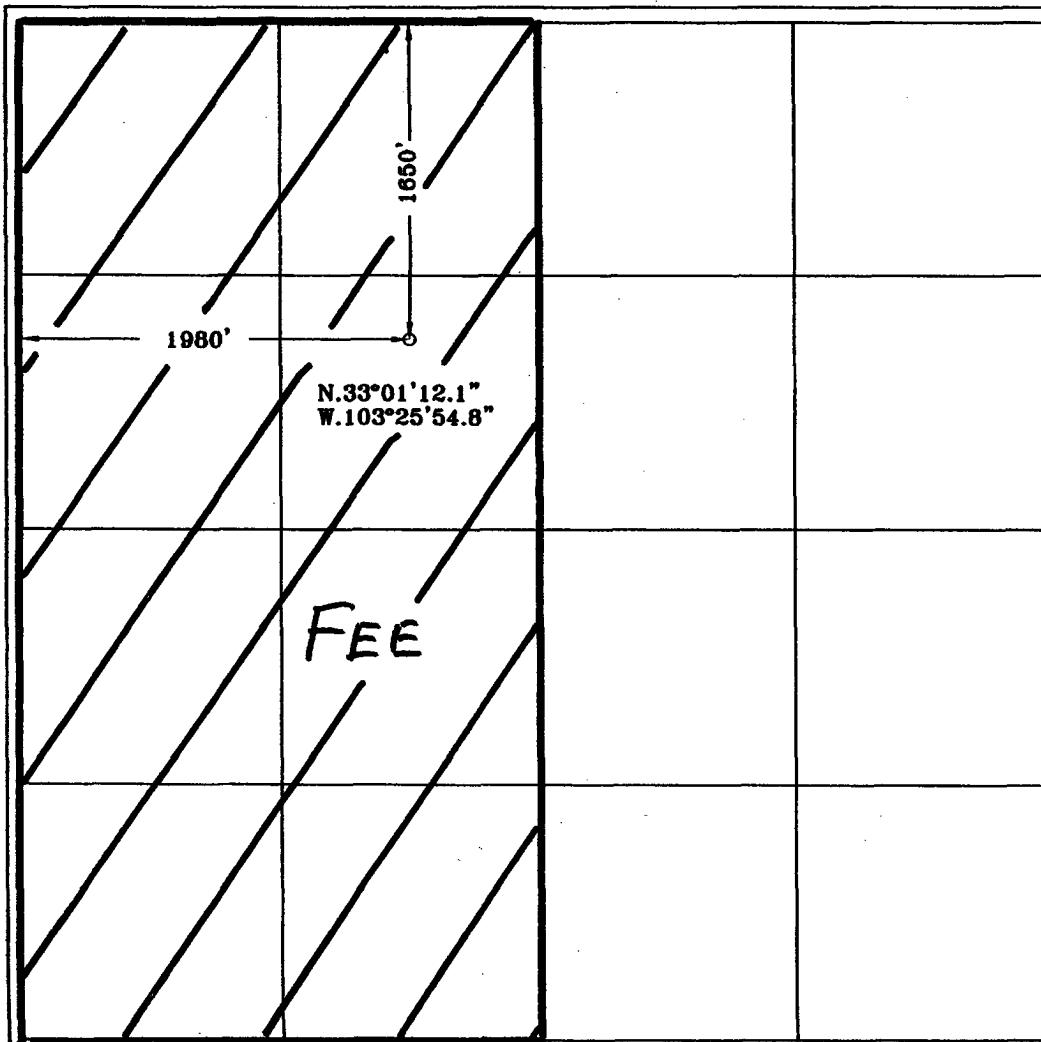
UL or lot No.	Section	Township	Range	Lot Idn	Feet from the	North/South line	Feet from the	East/West line	County
F	17	15S	35E		1650	NORTH	1980	WEST	LEA

Bottom Hole Location If Different From Surface

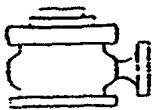
UL or lot No.	Section	Township	Range	Lot Idn	Feet from the	North/South line	Feet from the	East/West line	County

Dedicated Acres 320	Joint or Infill	Consolidation Code	Order No.
-------------------------------	-----------------	--------------------	-----------

NO ALLOWABLE WILL BE ASSIGNED TO THIS COMPLETION UNTIL ALL INTERESTS HAVE BEEN CONSOLIDATED
OR A NON-STANDARD UNIT HAS BEEN APPROVED BY THE DIVISION



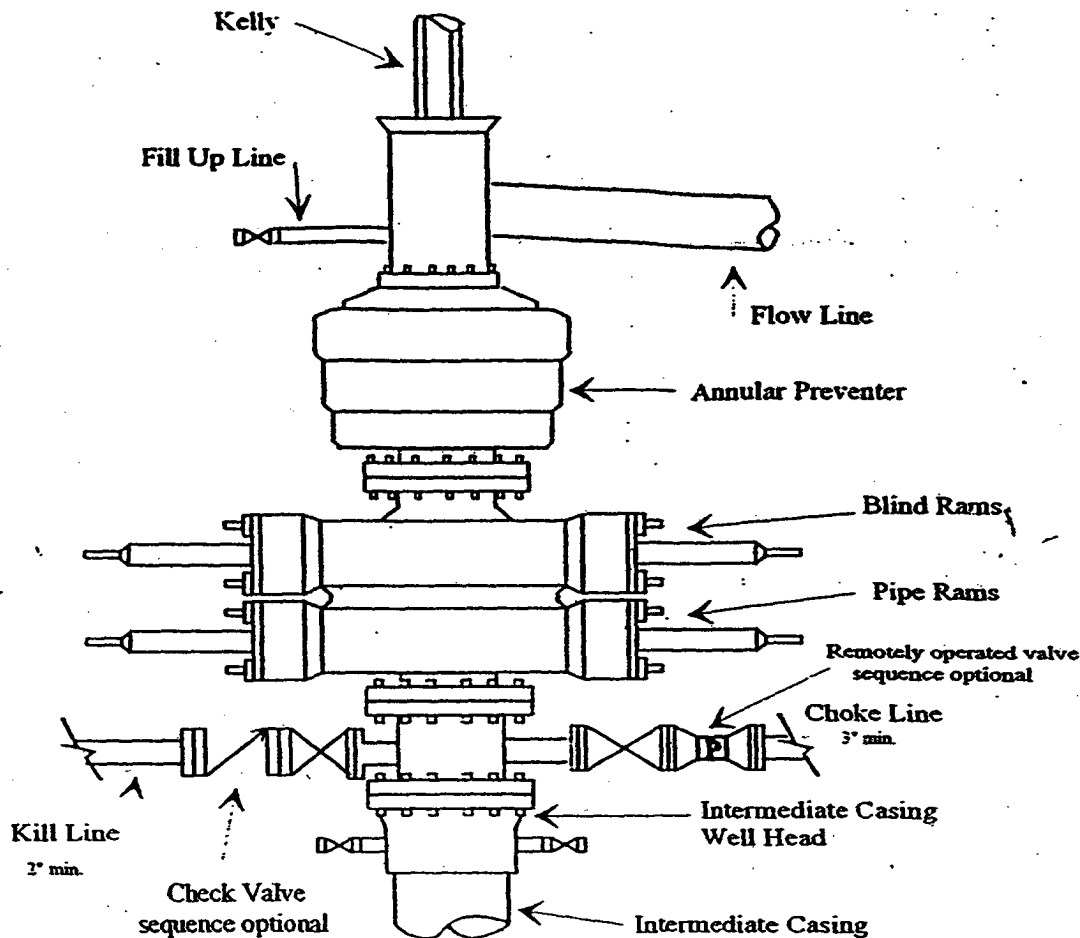
OPERATOR CERTIFICATION	
I hereby certify the the information contained herein is true and complete to the best of my knowledge and belief.	
Clofton R. May	
Signature	
Clofton R. May	
Printed Name	
Regulatory Agent	
Title	
3/5/02	
Date	
SURVEYOR CERTIFICATION	
I hereby certify that the well location shown on this plat was plotted from field notes of actual surveys made by me or under my supervision, and that the same is true and correct to the best of my belief.	
2/28/2002	
Date Surveyed	
Signature & Seal of Professional Surveyor	
HELMUTH JOHNS	
NEW MEXICO	
3640	
Certificate No. 1123456789	
DOTSON - 1 - L-140	
GENERAL SURVEYING COMPANY	



Yates Petroleum Corporation

BOP-4

Typical 5,000 psi Pressure System Schematic Annular with Double Ram Preventer Stack



Typical 5,000 psi choke manifold assembly with at least these minimum features

