

UNITED STATES
DEPARTMENT OF THE INTERIOR
BUREAU OF LAND MANAGEMENT

FORM APPROVED
OMB NO. 1004-0137
Expires July 31, 2010

RECEIVED

SUNDRY NOTICES AND REPORTS ON WELLS APR 04 2011

Do not use this form for proposals to drill or to re-enter an abandoned well. Use Form 3160-3 (APD) for such proposals.

SUBMIT IN TRIPLICATE - Other instructions on page 2

1. Type of Well

☒ Oil Well ☐ Gas Well ☐ Other

2. Name of Operator

EOG Resources Inc.

3a. Address

P.O. Box 2267 Midland, Texas 79702

3b. Phone No. (include area code)

432-686-3689

4. Location of Well (Footage, Sec., T., R., M., or Survey Description)

50' FNL & 440' FWL, U/L D (SHL)

330' FSL & 440' FWL, U/L M (BHL)

Sec 23, T25S, R33E

5. Lease Serial No.

NM 108503

6. If Indian, Allottee or Tribe Name

7. If Unit or CA/Agreement, Name and/or No.

8. Well Name and No.

Caballo 23 Federal 1H

9. API Well No.

30-025-40050

10. Field and Pool, or Exploratory Area

Red Hills; Bone Spring

11. County or Parish, State

Lea

NM

12. CHECK APPROPRIATE BOX(ES) TO INDICATE NATURE OF NOTICE, REPORT, OR OTHER DATA

TYPE OF SUBMISSION

☒ Notice of Intent

☐ Subsequent Report

☐ Final Abandonment Notice

TYPE OF ACTION

☐ Acidize

☐ Alter Casing

☐ Casing Repair

☒ Change Plans

☐ Convert to Injection

☐ Deepen

☐ Fracture Treat

☐ New Construction

☐ Plug and Abandon

☐ Plug Back

☐ Production (Start/Resume)

☐ Reclamation

☐ Recomplete

☐ Temporarily Abandon

☐ Water Disposal

☐ Water Shut-Off

☐ Well Integrity

☐ Other

13. Describe Proposed or Completed Operation (clearly state all pertinent details, including estimated starting date of any proposed work and approximate duration thereof. If the proposal is to deepen directionally or recompleat horizontally, give subsurface locations and measured and true vertical depths of all pertinent markers and zones. Attach the Bond under which the work will be performed or provide the Bond No. on file with BLM/BIA. Required subsequent reports shall be filed within 30 days following completion of the involved operations. If the operation results in a multiple completion or recompleat in a new interval, a Form 3160-4 shall be filed once testing has been completed. Final Abandonment Notices shall be filed only after all requirements, including reclamation, have been completed, and the operator has determined that the final site is ready for final inspection.)

EOG Resources requests the following changes be made in the casing design for Caballo 23 Federal 1H:

from: 17-1/2" bit - 13-3/8" casing
12-1/4" bit - 9-5/8" casing
8-3/4" bit - 5-1/2" casing

to: 14-3/4" bit - 11-3/4" casing
11" bit - 8-5/8" casing
7-7/8" bit - 5-1/2" casing

Detailed information attached.

SEE ATTACHED FOR
CONDITIONS OF APPROVAL

14. I hereby certify that the foregoing is true and correct

Name (Printed/Typed)

Stan Wagner

Title Regulatory Analyst

Signature

Date 3/28/2011

APPROVED

THIS SPACE FOR FEDERAL OR STATE OFFICE USE

Approved by

Title

MAR 30 2011

Conditions of approval, if any, are attached. Approval of this notice does not warrant or certify that the applicant holds legal or equitable title to those rights in the subject lease which would entitle the applicant to conduct operations thereon.

Office

WESLEY W. INGRAM
PETROLEUM ENGINEER

Title 18 U.S.C. Section 1001, and Title 43 U.S.C. Section 1212, makes it a crime for any person knowingly and willfully to make to any department or agency of the United States any false, fictitious or fraudulent statements or representations as to any matter within its jurisdiction.

APR 05 2011

PETROLEUM ENGINEER

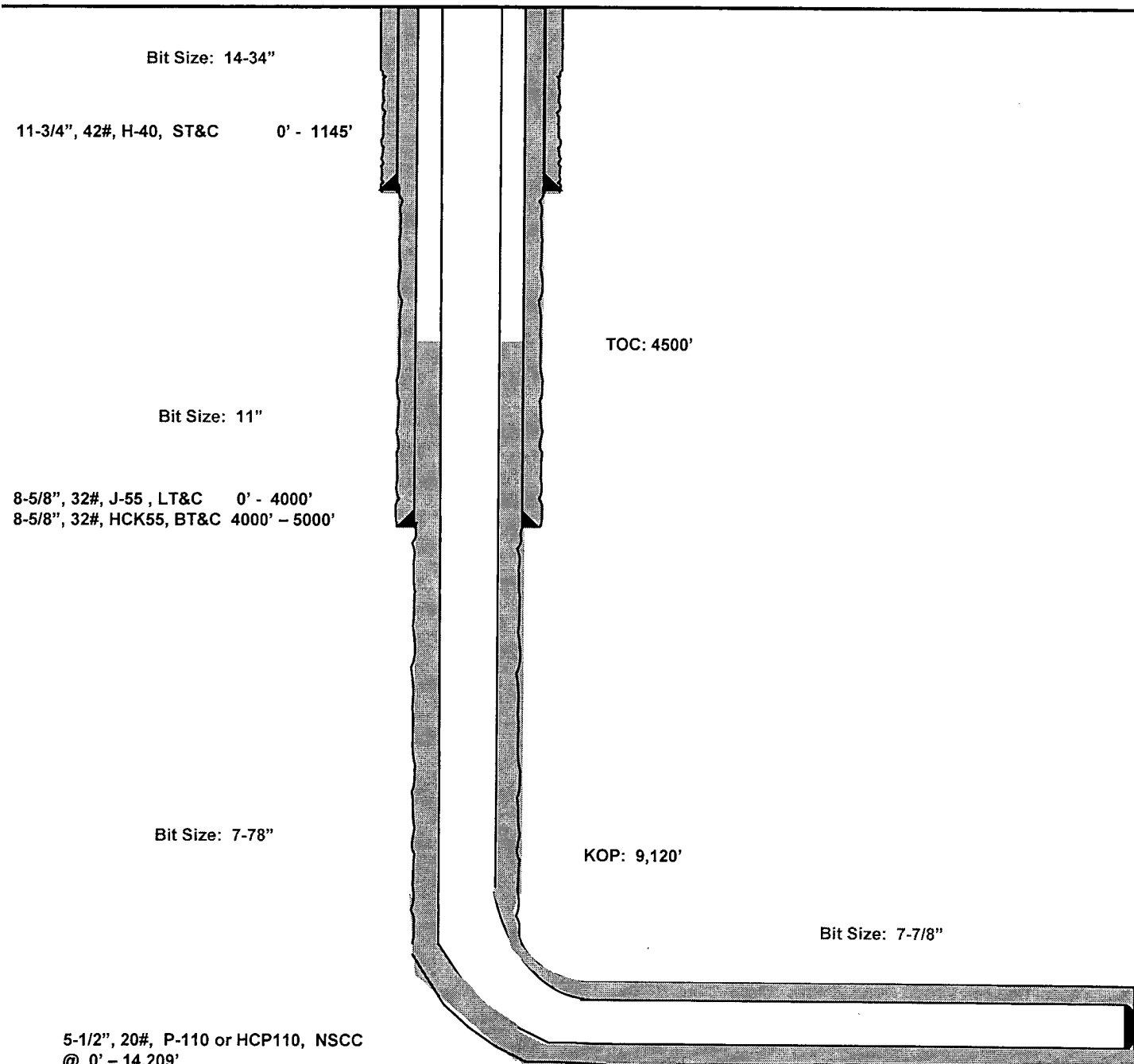
Caballo 23 Federal #1H
Red Hills
Lea County, New Mexico

50' FNL
440' FWL
Section 23
T-25-S, R-33-E

Proposed Wellbore

API: 30-025-

KB: 3,372.5'
GL: 3,342.5'



Lateral: 14,209' MD, 9,450' TVD

BH Location: 330' FSL & 440' FWL
Section 23
T-25-S, R-33-E

EOG RESOURCES, INC.
CABALLO 23 FEDERAL NO. 1H
REVISED 3/28/2011 FOR SUNDRY NOTICE

RECEIVED
APR 04 2011
HOBBSOCD

1. GEOLOGIC NAME OF SURFACE FORMATION:

Permian

2. ESTIMATED TOPS OF IMPORTANT GEOLOGICAL MARKERS:

Rustler	1,080'
Top of Salt	1,450'
Base of Salt	4,780'
Delaware	5,020'
Cherry Canyon	6,050'
Bone Spring Lime	9,210'

This well will be drilled as a non-pilot well.

3. ESTIMATED DEPTHS OF ANTICIPATED FRESH WATER, OIL OR GAS:

Upper Permian Sands	0- 400'	Fresh Water
Cherry Canyon	6,050'	Oil
Bone Spring Lime	9,210'	Oil

No other Formations are expected to give up oil, gas or fresh water in measurable quantities. Surface fresh water sands will be protected by setting 11.75" casing at 1,180' and circulating cement back to surface.

4. CASING PROGRAM - NEW

Hole Size	Interval	Csg OD	Weight	Grade	Conn	DF _{min} Collapse	DF _{min} Burst	DF _{min} Tension
14.75"	0 – 1180'	11.750"	42#	H40	STC	1.10	1.25	1.60
11.00"	0 - 4000'	8.625"	32#	J55	LTC	1.10	1.25	1.60
11.00"	4000'-5000'	8.625"	32#	HCK55	BTC	1.10	1.25	1.60
7.875"	0'-14,209'	5.5"	20#	P110 or HCP110	NSCC	1.10	1.25	1.60

EOG RESOURCES, INC.
CABALLO 23 FEDERAL NO. 1H
REVISED 3/28/2011 FOR SUNDRY NOTICE

Cementing Program:

Depth	No. Sacks	Wt. lb/gal	Yld Ft ³ /ft	Slurry Description
1,180'	300	13.5	1.73	Lead: Class C + 4.0% Bentonite + 0.6% CD-32 + 0.5% CaCl ₂ + 0.25 lb/sk Cello-Flake
	200	14.8	1.34	Tail: Class C + 0.6% FL-62 + 0.25 lb/sk Cello-Flake + 0.2% Sodium Metasilicate
5,000'	700	12.7	2.22	Lead: Class 'C' + 1.50% R-3 + 0.25 lb/sk Cello-Flake + 2.0% Sodium Metasilicate + 10% Salt + 0.005 lb/sk Static Free
	200	14.8	1.32	Tail: Class 'C' + 0.25 lb/sk Cello Flake + 0.005 lb/sk Static Free
14,209'	150	10.8	3.67	Lead: 60:40:0 Class 'C' + 15.00 lb/sk BA-90 + 4.00% MPA-5 + 3.00% SMS + 5.00% A-10 + 1.00% BA-10A + 0.80% ASA-301 + 2.90% R-21 + 8.00 lb/sk LCM-1 + 0.005 lb/sk Static Free
	400	11.8	2.38	Middle: 50:50:10 Class 'H' + 0.80% FL-52 + 0.45% ASA-301 + 0.40% SMS + 2.00% Salt + 3.00 lb/sx LCM-1 + 0.20% R-21 + 0.25 lb/sk Cello Flake + 0.005 lb/sk Static Free
	900	14.2	1.28	Tail: 50:50:2 Class 'H' + 0.65% FL-52 + 0.20% CD-32 + 0.15% SMS + 2.00% Salt + 0.10% R-3 + 0.005 lb/sk Static Free

Note: Cement volumes based on bit size plus at least 25% excess in the open hole plus 10% excess in the cased-hole overlap section.

5. MINIMUM SPECIFICATIONS FOR PRESSURE CONTROL:

(SEE EXHIBIT #1)

The blowout preventer equipment (BOP) shown in Exhibit #1 will consist of a double ram-type (10,000 psi WP) preventer and an annular preventer (5000-psi WP). Units will be hydraulically operated and the ram-type will be equipped with blind rams on bottom and drill pipe rams on top. All BOP's and accessory equipment will be tested in accordance with Onshore Oil & Gas order No. 2.

Even though 10,000 psi BOPE will be utilized, 3000 psi BOPE is adequate for this application. Due to the 3000 psi BOPE requirement no FIT test(s) are planned.

Before drilling out of the surface casing, the ram-type BOP and accessory equipment will be tested to 3000/ 250 psig and the annular preventer to 2500/ 250 psig.

Before drilling out of the intermediate casing, the ram-type BOP and accessory equipment will be tested to 3000/ 250 psig and the annular preventer to 2500/ 250 psig.

EOG RESOURCES, INC.
CABALLO 23 FEDERAL NO. 1H
REVISED 3/28/2011 FOR SUNDRY NOTICE

Pipe rams will be operationally checked each 24-hour period. Blind rams will be operationally checked on each trip out of the hole. These checks will be noted on the daily tour sheets.

Hydraulically operated choke will not be installed prior to the setting and cementing of the intermediate casing string, but will be installed prior to drilling out of the intermediate casing shoe.

6. TYPES AND CHARACTERISTICS OF THE PROPOSED MUD SYSTEM:

The applicable depths and properties of the drilling fluid systems are as follows:

Depth	Type	Weight (ppg)	Viscosity	Water Loss
0 – 1,180'	Fresh water + Gel	8.6-8.8	28-34	N/c
1,180' – 5,000'	Saturated Brine water	10.0-10.2	28-34	N/c
5,000' – 14,209'	Cut Brine Water	9.1 – 9.5	28-34	N/c

Sufficient mud materials to maintain mud properties and meet minimum lost circulation and weight increase requirements will be kept at the wellsite at all times.

7. AUXILIARY WELL CONTROL AND MONITORING EQUIPMENT:

- (A) A kelly cock will be kept in the drill string at all times.
- (B) A full opening drill pipe-stabbing valve (inside BOP) with proper drill pipe connections will be on the rig floor at all times.
- (C) A mud logging unit will be continuously monitoring drill penetration rate and hydrocarbon shows from intermediate casing point to TD.
- (D) H₂S monitoring and detection equipment will be utilized from surface casing point to TD.

8. LOGGING, TESTING AND CORING PROGRAM:

Open-hole logs are not planned for this well.

EOG RESOURCES, INC.
CABALLO 23 FEDERAL NO. 1H
REVISED 3/28/2011 FOR SUNDRY NOTICE

**9. ABNORMAL CONDITIONS, PRESSURES, TEMPERATURES AND
POTENTIAL HAZARDS:**

The estimated bottom hole temperature (BHT) at TD is 156 degrees F with an estimated maximum bottom-hole pressure (BHP) at TD of 4115 psig. No hydrogen sulfide or other hazardous gases or fluids have been encountered, reported or are known to exist at this depth in this area. No major loss circulation zones have been reported in offsetting wells.

10. ANTICIPATED STARTING DATE AND DURATION OF OPERATIONS:

The drilling operation should be finished in approximately one month. If the well is productive, an additional 90-120 days will be required for completion and testing before a decision is made to install permanent facilities.

EXHIBIT 1

EOG Resources
10,000 PSI BOPE

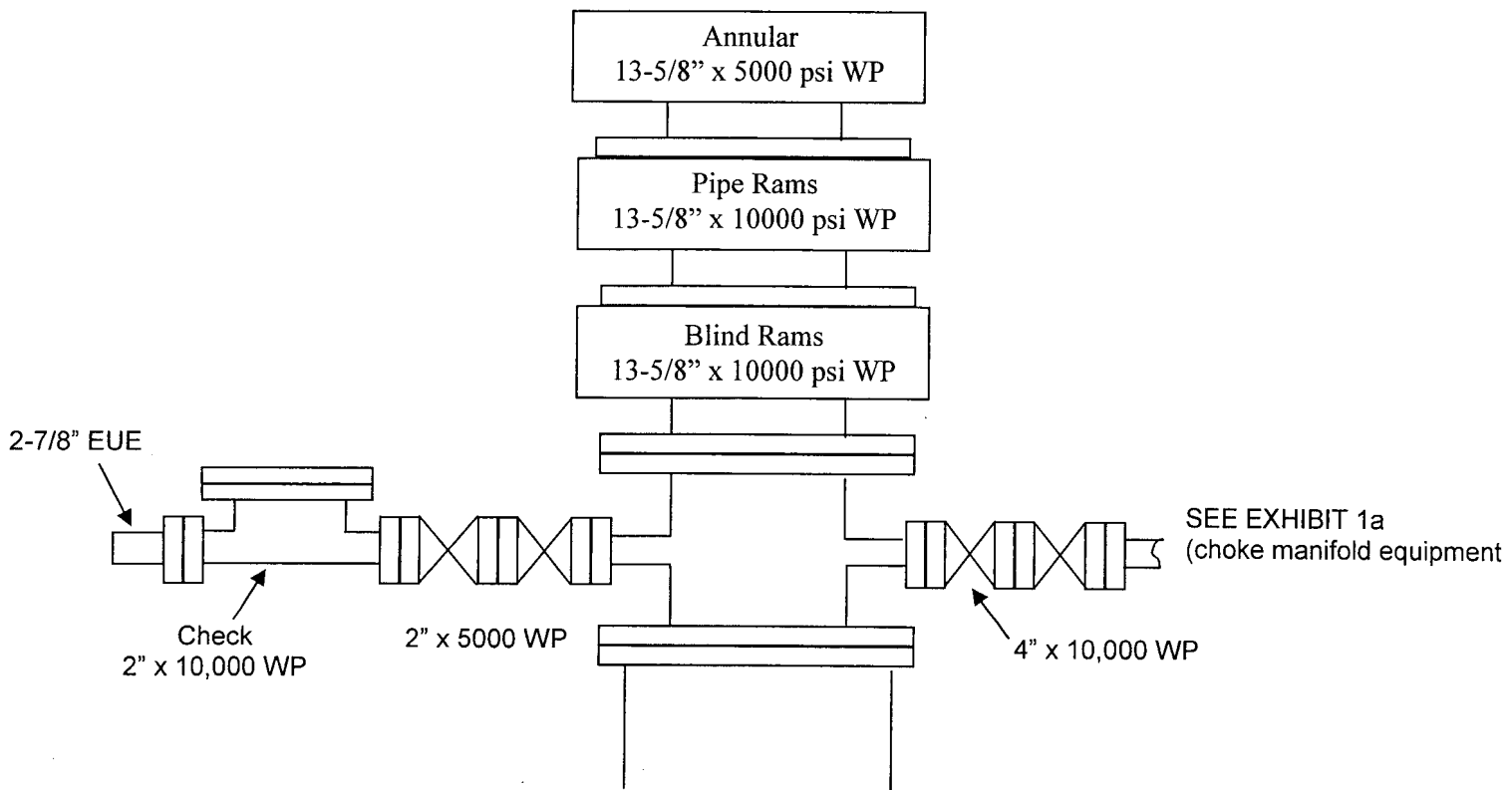
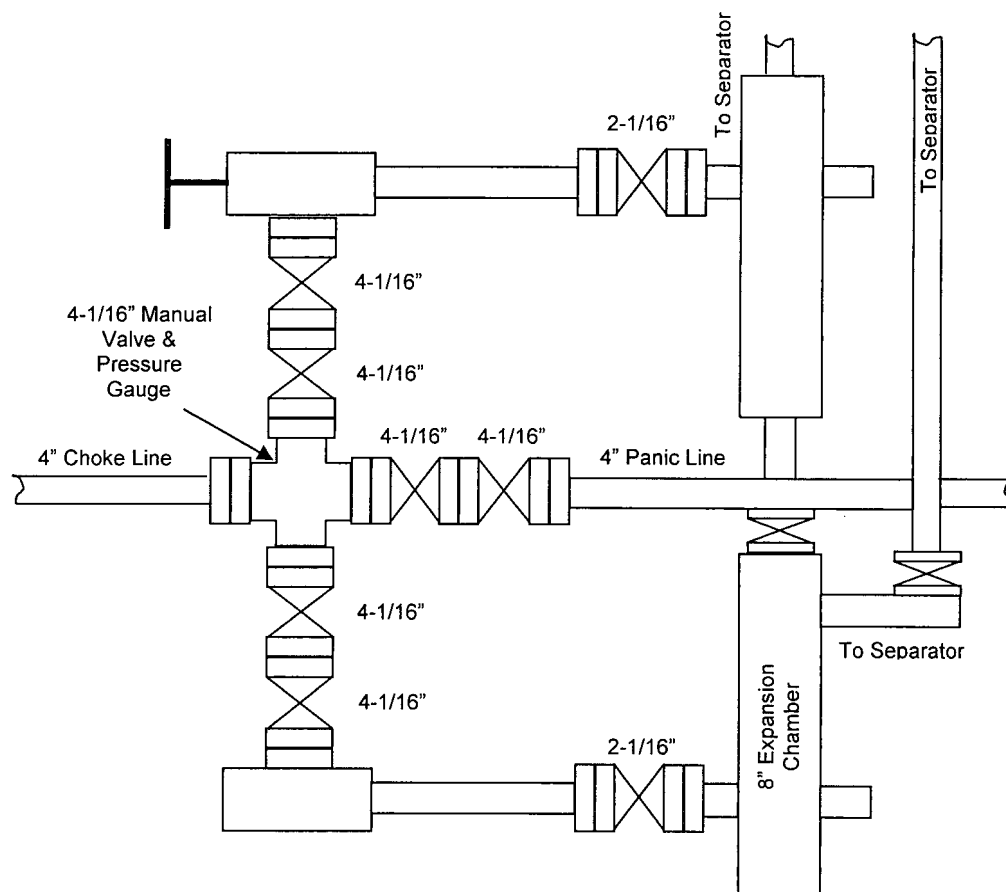


EXHIBIT 1a
EOG Resources, Inc.
10M Choke Manifold Equipment



RECEIVED

APR 04 2011

HOBBSOCD

**PECOS DISTRICT
CONDITIONS OF APPROVAL**

OPERATOR'S NAME:	EOG RESOURCES, INC
LEASE NO.:	NM108503
WELL NAME & NO.:	1H-CABALLO 23 FEDERAL
SURFACE HOLE FOOTAGE:	0050' FNL & 0440' FWL
BOTTOM HOLE FOOTAGE	0330' FSL & 0440' FWL
LOCATION:	Section 23, T. 25 S., R. 33 E., NMPM
COUNTY:	Lea County, New Mexico

I. DRILLING

A. DRILLING OPERATIONS REQUIREMENTS

The BLM is to be notified a minimum of 4 hours in advance for a representative to witness:

- a. Spudding well
- b. Setting and/or Cementing of all casing strings
- c. BOPE tests

☒ **Lea County**

Call the Hobbs Field Station, 414 West Taylor, Hobbs NM 88240,
(575) 393-3612

1. **Although Hydrogen Sulfide has not been reported in this section, it is always a possible hazard. It has been reported in the section to the northeast and the section to the southwest. If Hydrogen Sulfide is encountered, please report measured amounts and formations to the BLM.**
2. **Unless the production casing has been run and cemented or the well has been properly plugged, the drilling rig shall not be removed from over the hole without prior approval. If the drilling rig is removed without approval – an Incident of Non-Compliance will be written and will be a "Major" violation.**
3. Floor controls are required for 3M or Greater systems. These controls will be on the rig floor, unobstructed, readily accessible to the driller and will be operational at all times during drilling and/or completion activities. Rig floor is defined as the area immediately around the rotary table; the area immediately above the substructure on which the draw works are located, this does not include the dog house or stairway area.
4. **The record of the drilling rate along with the GR/N well log run from TD to surface (horizontal well – vertical portion of hole) will be submitted to the BLM office as well as all other logs run on the borehole 30 days from completion. If available, a digital copy of the logs is to be submitted in addition to the paper copies. The Rustler top and top and bottom of Salt are to be recorded on the Completion Report.**

5. Operator to submit mud-logging report regarding penetration rate, shows and any lithology information gathered.

B. CASING

Changes to the approved APD casing and cement program require submitting a sundry and receiving approval prior to work. Failure to obtain approval prior to work will result in an Incident of Non-Compliance being issued.

Centralizers required on surface casing per Onshore Order 2.III.B.1.f.

Wait on cement (WOC) time prior to drilling out for a primary cement job will be a minimum 18 hours for a water basin, 24 hours in the potash area, or 500 pounds compressive strength, whichever is greater for all casing strings. DURING THIS WOC TIME, NO DRILL PIPE, ETC. SHALL BE RUN IN THE HOLE. Provide compressive strengths including hours to reach required 500 pounds compressive strength prior to cementing each casing string. See individual casing strings for details regarding lead cement slurry requirements.

No pea gravel permitted for remedial or fall back remedial without prior authorization from the BLM engineer.

**Possible water and brine flows in the Salado, Castile and Delaware Mountain groups.
Possible lost circulation in the Castile and Delaware Mountain groups.**

1. The 11-3/4 inch surface casing shall be set at approximately 1180 feet (a minimum of 25 feet into the Rustler Anhydrite and above the salt) and cemented to the surface. If salt is encountered, set casing shoe 25 feet above the top of salt.
 - a. If cement does not circulate to the surface, the appropriate BLM office shall be notified and a temperature survey utilizing an electronic type temperature survey with surface log readout will be used or a cement bond log shall be run to verify the top of the cement. Temperature survey will be run a minimum of six hours after pumping cement and ideally between 8-10 hours after completing the cement job.
 - b. **Wait on cement (WOC) time for a primary cement job is to include the lead cement slurry.**
 - c. Wait on cement (WOC) time for a remedial job will be a minimum of 4 hours after bringing cement to surface or 500 pounds compressive strength, whichever is greater.
 - d. If cement falls back, remedial cementing will be done prior to drilling out that string.
2. The minimum required fill of cement behind the 8-5/8 inch intermediate casing is:
 - ☒ Cement to surface. If cement does not circulate see B.1.a, c-d above. **Casing to be set within the base of the Castile or the Lamar limestone.**

Centralizers required on horizontal leg, must be type for horizontal service and minimum of one every other joint.

3. The minimum required fill of cement behind the 5-1/2 inch production casing is:

☒ Cement should tie-back at least 500 feet into previous casing string. Operator shall provide method of verification.

4. If hardband drill pipe is rotated inside casing, returns will be monitored for metal. If metal is found in samples, drill pipe will be pulled and rubber protectors which have a larger diameter than the tool joints of the drill pipe will be installed prior to continuing drilling operations.

C. PRESSURE CONTROL

1. All blowout preventer (BOP) and related equipment (BOPE) shall comply with well control requirements as described in Onshore Oil and Gas Order No. 2 and API RP 53 Sec. 17.

2. Minimum working pressure of the blowout preventer (BOP) and related equipment (BOPE) required for drilling below the surface casing shoe shall be **3000 (3M)** psi.

a. **For surface casing only:** If the BOP/BOPE is to be tested against casing, the wait on cement (WOC) time for that casing is to be met (see WOC statement at start of casing section). Independent service company required.

3. The appropriate BLM office shall be notified a minimum of 4 hours in advance for a representative to witness the tests.

a. In a water basin, for all casing strings utilizing slips, these are to be set as soon as the crew and rig are ready and any fallback cement remediation has been done. The casing cut-off and BOP installation can be initiated four hours after installing the slips, which will be approximately six hours after bumping the plug. For those casing strings not using slips or where the float does not hold, the minimum wait time before cut-off is eight hours after bumping the plug or when the cement reaches 500 psi compressive strength (including lead when specified), whichever is greater. BOP/BOPE testing can begin after the above conditions are satisfied.

b. The tests shall be done by an independent service company utilizing a test plug **not a cup or J-packer**. The operator also has the option of utilizing an independent tester to test without a plug (i.e. against the casing) pursuant to Onshore Order 2 with the pressure not to exceed 70% of the burst rating for the casing. Any test against the casing must meet the WOC time for water basin (18 hours) or potash (24 hours) or 500 pounds compressive strength, whichever is greater, prior to initiating the test (see casing segment as lead cement may be critical item).

c. The results of the test shall be reported to the appropriate BLM office.

- d. All tests are required to be recorded on a calibrated test chart. **A copy of the BOP/BOPE test chart and a copy of independent service company test will be submitted to the appropriate BLM office.**
- e. The BOP/BOPE test shall include a low pressure test from 250 to 300 psi. The test will be held for a minimum of 10 minutes if test is done with a test plug and 30 minutes without a test plug.

D. DRILL STEM TEST

If drill stem tests are performed, Onshore Order 2.III.D shall be followed.

E. WASTE MATERIAL AND FLUIDS

All waste (i.e. drilling fluids, trash, salts, chemicals, sewage, gray water, etc.) created as a result of drilling operations and completion operations shall be safely contained and disposed of properly at a waste disposal facility. No waste material or fluid shall be disposed of on the well location or surrounding area.

Porto-johns and trash containers will be on-location during fracturing operations or any other crew-intensive operations.

WWI 033011