

RECEIVED

APR 04 2011
HOBBSD

HALLIBURTON

Cementing Job Summary

The Road to Excellence Starts with Safety

Sold To #: 342870		Ship To #: 2806353		Quote #:		Sales Order #: 7626750	
Customer: COG OPERATING LLC - EBUS				Customer Rep: Williams, Benny			
Well Name: Taylor D		Well #: 2		API/UWI #: 30-025-39399			
Field: MALJAMAR		City (SAP): MALJAMAR		County/Parish: Lea		State: New Mexico	
Contractor: Silver Oak		Rig/Platform Name/Num: 8					
Job Purpose: Cement Surface Casing							
Well Type: Development Well				Job Type: Cement Surface Casing			
Sales Person: BOGARDUS, PETER				Srcv Supervisor: HOYT, MICHAEL		MBU ID Emp #: 358390	
Job Personnel							
HES Emp Name	Exp Hrs	Emp #	HES Emp Name	Exp Hrs	Emp #	HES Emp Name	Exp Hrs
Ballard, Michael	7.5	445143	ELLIOTT, ISAAC M	7.5	436989	HOYT, MICHAEL Lee	7.5
Muniz, Manuel	7.5	478085	SMITH, EUGENE Alan	7.5	421084		
Equipment							
HES Unit #	Distance-1 way	HES Unit #	Distance-1 way	HES Unit #	Distance-1 way	HES Unit #	Distance-1 way
10565348	50 mile	10822511	50 mile	10867529	50 mile	10897825	50 mile
10899554	50 mile	11038558	50 mile	11041104	50 mile		
Job Hours							
Date	On Location Hours	Operating Hours	Date	On Location Hours	Operating Hours	Date	On Location Hours
09-11-2010	7.5	3					
TOTAL		Total is the sum of each column separately					
Job				Job Times			
Formation Name				Date	Time	Time Zone	
Formation Depth (MD)	Top	Bottom		Called Out	11 - Sep - 2010	08:00	MST
Form Type	BHST			On Location	11 - Sep - 2010	12:00	MST
Job depth MD	650. ft	Job Depth TVD	650. ft	Job Started	11 - Sep - 2010	16:50	MST
Water Depth		Wk Ht Above Floor	4. ft	Job Completed	11 - Sep - 2010	17:51	MST
Perforation Depth (MD)	From	To		Departed Loc	11 - Sep - 2010	19:30	MST
Well Data							
Description	New / Used	Max pressure psig	Size in	ID in	Weight lbm/ft	Thread	Grade
17-1/2" Open Hole				17.5			
Surface Casing	Unknown		13.375	12.715	48.		
Sales/Rental/3 rd Party (HES)							
Description	Qty	Qty uom	Depth	Supplier			
PLUG,CMTG,TOP,WOODN,TWO CUP TY,13 3/8	1	EA					
SUGAR, GRANULATED, IMPERIAL	200	LB					
RHODAMINE RED LIQ DYE (2)	2	LB					
Tools and Accessories							
Type	Size	Qty	Make	Depth	Type	Size	Qty
Guide Shoe					Packer		
Float Shoe					Bridge Plug		
Float Collar					Retainer		
Insert Float							
Stage Tool							
Miscellaneous Materials							
Gelling Agt		Conc		Surfactant		Conc	
Treatment Fld		Conc		Inhibitor		Conc	
Acid Type		Qty	Conc	Sand Type		Size	Qty

Fluid Data									
Stage/Plug #: 1									
Fluid #	Stage Type	Fluid Name	Qty	Qty uom	Mixing Density lbm/gal	Yield ft ³ /sk	Mix Fluid Gal/sk	Rate bbl/min	Total Mix Fluid Gal/sk
1	Precede Cement with 20 bbl Fresh Water			bbl	.	.0	.0	.0	
2	Premium Plus	CMT - PREMIUM PLUS CEMENT (100012205)	350.0	sacks	13.5	1.75	9.18		9.18
	94 lbm	CMT - PREMIUM PLUS - CLASS C REG OR TYPE III, BULK (100012205)							
	2 %	CALCIUM CHLORIDE - FLAKE, 50 LB SK (100078105)							
	4 %	BENTONITE, BULK (100003682)							
	0.125 lbm	POLY-E-FLAKE (101216940)							
	9.181 Gal	FRESH WATER							
3	Premium Plus	CMT - PREMIUM PLUS CEMENT (100012205)	200.0	sacks	14.8	1.35	6.39		6.39
	94 lbm	CMT - PREMIUM PLUS - CLASS C REG OR TYPE III, BULK (100012205)							
	2 %	CALCIUM CHLORIDE - FLAKE, 50 LB SK (100078105)							
	6.387 Gal	FRESH WATER							
Calculated Values		Pressures		Volumes					
Displacement	99	Shut In: Instant		Lost Returns		Cement Slurry	157	Pad	
Top Of Cement		5 Min		Cement Returns	49	Actual Displacement	99	Treatment	
Frac Gradient		15 Min		Spacers	20	Load and Breakdown		Total Job	276
Rates									
Circulating	5	Mixing	6	Displacement	6	Avg. Job	6		
Cement Left In Pipe	Amount	40 ft	Reason	Shoe Joint					
Frac Ring # 1 @	ID	Frac ring # 2 @	ID	Frac Ring # 3 @	ID	Frac Ring # 4 @	ID		
The Information Stated Herein Is Correct				Customer Representative Signature					

The Road to Excellence Starts with Safety

Sold To #: 342870	Ship To #: 2806353	Quote #:	Sales Order #: 7626750
Customer: COG OPERATING LLC - EBUS		Customer Rep: Williams, Benny	
Well Name: Taylor D		Well #: 2	API/UWI #: 30-025-39399
Field: MALJAMAR	City (SAP): MALJAMAR	County/Parish: Lea	State: New Mexico
Legal Description:			
Lat: N 0 deg. OR N 0 deg. 0 min. 0 secs.		Long: E 0 deg. OR E 0 deg. 0 min. 0 secs.	
Contractor: Silver Oak		Rig/Platform Name/Num: 8	
Job Purpose: Cement Surface Casing			Ticket Amount:
Well Type: Development Well		Job Type: Cement Surface Casing	
Sales Person: BOGARDUS, PETER		Srvc Supervisor: HOYT, MICHAEL	MBU ID Emp #: 358390

Activity Description	Date/Time	Cht #	Rate bbl/ min	Volume bbl		Pressure psig		Comments
				Stage	Total	Tubing	Casing	
Call Out	09/11/2010 08:00							
Safety Meeting - Service Center or other Site	09/11/2010 09:30							
Depart from Service Center or Other Site	09/11/2010 10:30							
Arrive at Location from Service Center	09/11/2010 12:00							RIG CREW WAS STILL DRILLING UPON ARRIVAL
Safety Meeting - Assessment of Location	09/11/2010 12:15							
Safety Meeting - Pre Rig-Up	09/11/2010 12:30							
Rig-Up Equipment	09/11/2010 12:45							
Rig-Up Completed	09/11/2010 13:30							
Safety Meeting - Pre Job	09/11/2010 16:15							
Start Job	09/11/2010 16:40							
Test Lines	09/11/2010 16:48		1	3		2500.0		TEST LINES TO 2,500 PSI
Pump Spacer 1	09/11/2010 16:50		2	20			185.0	FRESH WATER
Pump Lead Cement	09/11/2010 16:55		6	109			228.0	MIX AND PUMP 350 SACKS OF P+ C WITH 2% CACL, 4% BENTONITE, .125# POLY-E-FLAKE, @ 13.5PPG, 1.75 YIELD, 9.18 WATER
Pump Tail Cement	09/11/2010 17:14		6	48			300.0	MIX AND PUMP 200 SACKS OF P+ C WITH 2% CACL, @ 14.8 PPG, 1.35 YIELD, 6.39 WATER.

Sold To # : 342870

Ship To # :2806353

Quote # :

Sales Order # : 7626750

SUMMIT Version: 7.20.130

Saturday, September 11, 2010 06:16:00

Activity Description	Date/Time	Cht #	Rate bbl/ min	Volume bbl		Pressure psig		Comments
				Stage	Total	Tubing	Casing	
Drop Top Plug	09/11/2010 17:24							
Clean Lines	09/11/2010 17:25							
Pump Displacement	09/11/2010 17:25		6	99			290.0	FRESH WATER
Slow Rate	09/11/2010 17:44		2.5		85		225.0	
Bump Plug	09/11/2010 17:50		2.5		99		650.0	
End Job	09/11/2010 17:51							CIRCULATED 49 BBLS/ 157 SACKS OF CEMENT TO THE PIT
Safety Meeting - Pre Rig-Down	09/11/2010 18:00							
Rig-Down Equipment	09/11/2010 18:15							
Rig-Down Completed	09/11/2010 19:00							
Safety Meeting - Departing Location	09/11/2010 19:15							
Depart Location for Service Center or Other Site	09/11/2010 19:30							THANK YOU, MICHAEL HOYT AND CREW

HALLIBURTON

RECEIVED

APR 04 2011

HOBBSOCD

COG OPERATING LLC - EBUS

Taylor D 2
MALJAMAR
Lea County , New Mexico

Cement Intermediate Casing

13-Sep-2010

Job Site Documents

The Road to Excellence Starts with Safety

Sold To #: 342870	Ship To #: 2806353	Quote #:	Sales Order #: 7626753
Customer: COG OPERATING LLC - EBUS		Customer Rep: Williams, Benny	
Well Name: Taylor D	Well #: 2	API/UWI #:	
Field: MALJAMAR	City (SAP): MALJAMAR	County/Parish: Lea	State: New Mexico
Legal Description:			
Lat:		Long:	
Contractor: Silver Oak		Rig/Platform Name/Num: 8	
Job Purpose: Cement Intermediate Casing			Ticket Amount:
Well Type: Development Well		Job Type: Cement Intermediate Casing	
Sales Person: BOGARDUS, PETER		Srvs Supervisor: BROWN, RONALD	MBU ID Emp #: 431152

Activity Description	Date/Time	Cht #	Rate bbl/ min	Volume bbl		Pressure psig		Comments
				Stage	Total	Tubing	Casing	
Call Out	09/13/2010 10:00							ALL TIMES DOCUMENTED IN MST
Pre-Convoy Safety Meeting	09/13/2010 10:45							DISCUSSED ROUTE TO BE TAKEN AS WELL AS CONTINGENCY PLAN IN THE EVENT OF AN INCIDENT OR ACCIDENT
Depart from Service Center or Other Site	09/13/2010 11:00							
Arrive at Location from Service Center	09/13/2010 12:00							RIG PULLING DRILL PIPE
Assessment Of Location Safety Meeting	09/13/2010 12:10							DISCUSSED WHERE ALL HES EQUIPMENT WILL BE SPOTTED AND WHERE IRON AND HOSES WILL BE RUN
Pre-Rig Up Safety Meeting	09/13/2010 12:20							DISCUSSED POTENTIAL HAZARDS ASSOCIATED WITH RIGGING UP SUCH AS LINE OF FIRE AND TRIPPING HAZARDS
Rig-Up Equipment	09/13/2010 12:30							
Rig-Up Completed	09/13/2010 13:30							
Arrive at Location from Service Center	09/13/2010 13:30							BULK EQUIPMENT ARRIVED ON LOCATION.

Sold To #: 342870

Ship To #: 2806353

Quote #:

Sales Order #:

7626753

SUMMIT Version: 7.20.130

Monday, September 13, 2010 06:46:00

Activity Description	Date/Time	Cht #	Rate bbl/ min	Volume bbl		Pressure psig		Comments
				Stage	Total	Tubing	Casing	
Pre-Job Safety Meeting	09/13/2010 15:30							DISCUSSED SAFETY ISSUES RELATED TO THE JOB AS WELL AS HES JOB PROCEDURES AND CUSTOMER/THIRD PARTY PROCEDURES
Start Job	09/13/2010 16:02							
Test Lines	09/13/2010 16:05		3		3		2100.0	TESTED HES IRON TO 2100 PSI. TEST HELD WITH NO LEAKS AT UNIONS.
Pump Spacer 1	09/13/2010 16:06		3		20		60.0	PUMPED 20 BBL FRESH WATER SPACER WITH WG-19 GELLING AGENT
Pump Lead Cement	09/13/2010 16:12		6		174		175.0	PUMPED 400 SKS/174 BBL CLASS C PREMIUM PLUS CEMENT AT 12.8 PPG.
Pump Tail Cement	09/13/2010 16:44		6		48		270.0	PUMPED 200 SKS/48 BBL CLASS C PREMIUM PLUS CEMENT AT 14.8 PPG.
Shutdown	09/13/2010 16:53							SHUTDOWN TO DROP TOP PLUG.
Drop Plug	09/13/2010 16:54							
Pump Displacement	09/13/2010 16:55		6		128		550.0	PUMPED 128 BBL FRESH WATER TO DISPLACE TOP PLUG. CIRCULATED 61 BBL/140 SKS TO PIT
Bump Plug	09/13/2010 17:19						1100.0	LANDED TOP PLUG AT 550 PSI AND PRESSURED UP TO 1100 PSI
Check Floats	09/13/2010 17:20							FLOATS HELD. 1 BBL BACK TO TANKS.
End Job	09/13/2010 17:21							THANK YOU, RON AND CREW!!

Activity Description	Date/Time	Cht #	Rate bbl/ min	Volume bbl		Pressure psig		Comments
				Stage	Total	Tubing	Casing	
Pre-Rig Down Safety Meeting	09/13/2010 17:30							DISCUSSED POTENTIAL HAZARDS ASSOCIATED WITH RIGGING DOWN SUCH AS USING THE BUDDY SYSTEM AND PINCH POINTS
Rig-Down Equipment	09/13/2010 17:40							
Rig-Down Completed	09/13/2010 18:40							
Pre-Convoy Safety Meeting	09/13/2010 18:45							DISCUSSED ROUTE TO BE TAKEN AS WELL AS CONTINGENCY PLAN IN THE EVENT OF AN INCIDENT OR ACCIDENT
Depart Location for Service Center or Other Site	09/13/2010 19:00							
Arrive at Location from Other Job or Site	09/13/2010 20:00							

The Road to Excellence Starts with Safety

Sold To #: 342870	Ship To #: 2806353	Quote #:	Sales Order #: 7626753
Customer: COG OPERATING LLC - EBUS		Customer Rep: Williams, Benny	
Well Name: Taylor D	Well #: 2	API/UWI #:	
Field: MALJAMAR	City (SAP): MALJAMAR	County/Parish: Lea	State: New Mexico
Contractor: Silver Oak	Rig/Platform Name/Num: 8		
Job Purpose: Cement Intermediate Casing			
Well Type: Development Well	Job Type: Cement Intermediate Casing		
Sales Person: BOGARDUS, PETER	Srv Supervisor: BROWN, RONALD	MBU ID Emp #: 431152	

Job Personnel

HES Emp Name	Exp Hrs	Emp #	HES Emp Name	Exp Hrs	Emp #	HES Emp Name	Exp Hrs	Emp #
BELMUDEZ, JOHNNY Jesse	6.5	448541	BROWN, RONALD H	7	431152	HARDY, WILLIAM P	7	453192
HERNANDEZ, ART	6.5	441124						

Equipment

HES Unit #	Distance-1 way	HES Unit #	Distance-1 way	HES Unit #	Distance-1 way	HES Unit #	Distance-1 way
10628750C	50 mile	10830674	50 mile	10897827	50 mile	10960809	50 mile
10960827	50 mile	10989687	50 mile	11041170	50 mile		

Job Hours

Date	On Location Hours	Operating Hours	Date	On Location Hours	Operating Hours	Date	On Location Hours	Operating Hours
09/13/2010	7	3.5						

TOTAL Total is the sum of each column separately

Job

Job Times

Formation Name	Formation Depth (MD)	Top	Bottom	Called Out	Date	Time	Time Zone
Form Type				On Location	13 - Sep - 2010	10:00	MST
Job depth MD	2150. ft			Job Started	13 - Sep - 2010	12:00	MST
Water Depth				Job Completed	13 - Sep - 2010	16:02	MST
Perforation Depth (MD)	From	To		Job Completed	13 - Sep - 2010	17:21	MST
				Departed Loc	13 - Sep - 2010	19:00	MST

Well Data

Description	New / Used	Max pressure psig	Size in	ID in	Weight lbm/ft	Thread	Grade	Top MD ft	Bottom MD ft	Top TVD ft	Bottom TVD ft
11" Open Hole				11.				800.	2150.		
Intermediate Casing	Unknown		8.625	7.921	32.				2150.		
Surface Casing	Unknown		13.375	12.715	48.				800.		

Sales/Rental/3rd Party (HES)

Description	Qty	Qty uom	Depth	Supplier
PLUG,CMTG, TOP, 8 5/8, HWE, 7.20 MIN/8.09 MA	1	EA		
SUGAR, GRANULATED, IMPERIAL	250	LB		
RHODAMINE RED LIQ DYE (2)	2	LB		

Tools and Accessories

Type	Size	Qty	Make	Depth	Type	Size	Qty	Make	Depth	Type	Size	Qty	Make
Guide Shoe					Packer					Top Plug			
Float Shoe					Bridge Plug					Bottom Plug			
Float Collar					Retainer					SSR plug set			
Insert Float										Plug Container			
Stage Tool										Centralizers			

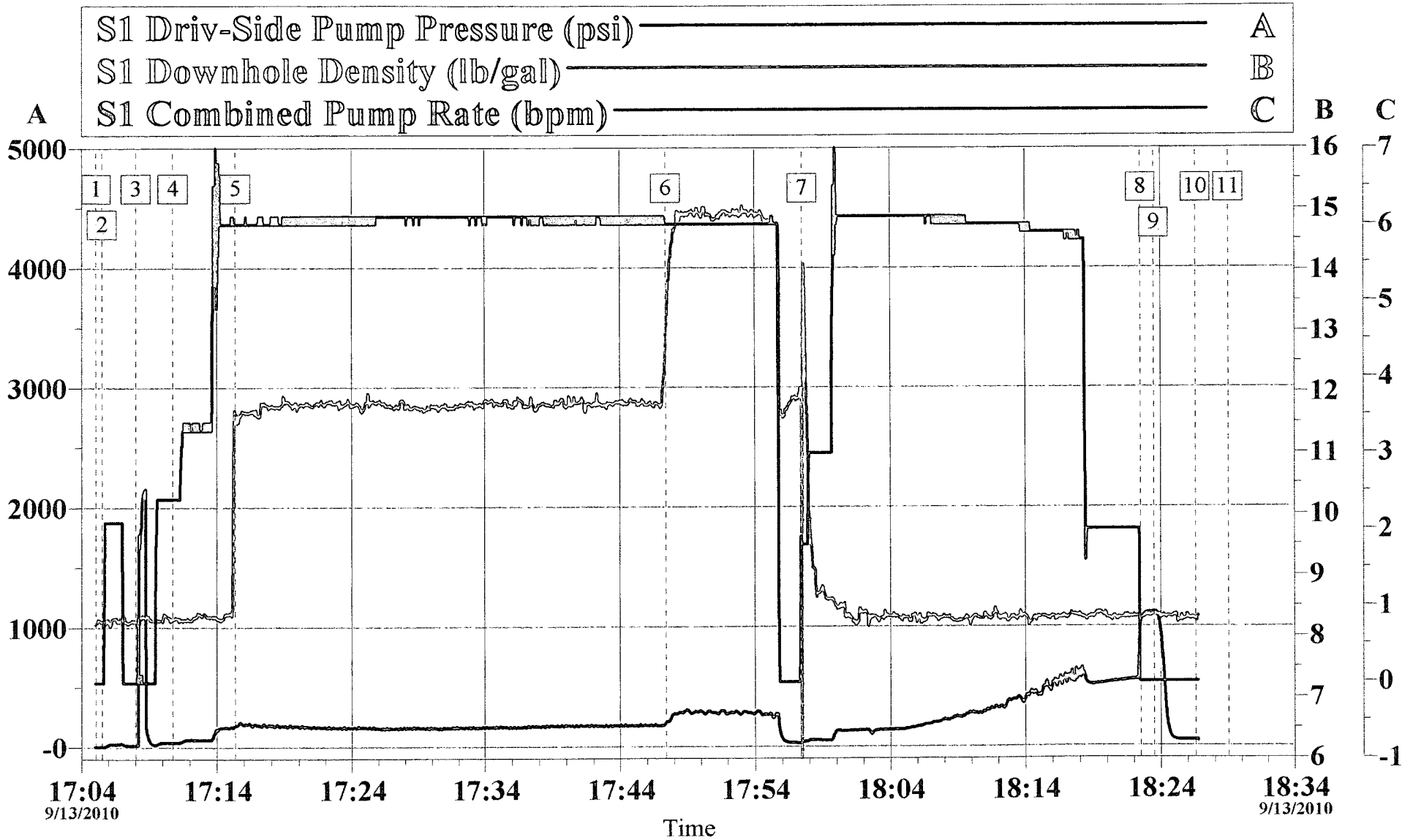
Miscellaneous Materials

Gelling Agt	Conc	Surfactant	Conc	Acid Type	Qty	Conc	%
Treatment Fld	Conc	Inhibitor	Conc	Sand Type	Size	Qty	

Fluid Data									
Stage/Plug #: 1									
Fluid #	Stage Type	Fluid Name	Qty	Qty uom	Mixing Density lbm/gal	Yield ft ³ /sk	Mix Fluid Gal/sk	Rate bbl/min	Total Mix Fluid Gal/sk
1	Precede Cement with 20 bbl Gelled Water		20.00	bbl	.	.0	.0	.0	
	2.5 ppb	WG-19, 50 LB BAG (100003638)							
2	Premium Plus 50/50 Poz (10% total gel)	POZ PREMIUM PLUS 50/50 - SBM (14239)	400.0	sacks	11.8	2.44	13.51		13.51
	8 %	BENTONITE, BULK (100003682)							
	5 %	SALT, BULK (100003695)							
	5 lbm	GILSONITE, BULK (100003700)							
	0.125 lbm	POLY-E-FLAKE (101216940)							
	13.512 Gal	FRESH WATER							
3	PREMIUM PLUS	CMT - PREMIUM PLUS CEMENT (100012205)	200.0	sacks	14.8	1.35	6.39		6.39
	94 lbm	CMT - PREMIUM PLUS - CLASS C REG OR TYPE III, BULK (100012205)							
	2 %	CALCIUM CHLORIDE - FLAKE, 50 LB SK (100078105)							
	6.387 Gal	FRESH WATER							
Calculated Values		Pressures		Volumes					
Displacement		Shut In: Instant		Lost Returns		Cement Slurry		Pad	
Top Of Cement		5 Min		Cement Returns		Actual Displacement		Treatment	
Frac Gradient		15 Min		Spacers		Load and Breakdown		Total Job	
Rates									
Circulating		Mixing		Displacement		Avg. Job			
Cement Left In Pipe		Amount	40 ft	Reason	Shoe Joint				
Frac Ring # 1 @	ID	Frac ring # 2 @	ID	Frac Ring # 3 @	ID	Frac Ring # 4 @	ID		
The Information Stated Herein Is Correct				Customer Representative Signature					

COG OPERATING LLC - EBUS
TAYLOR D # 2
CEMENT INTERMEDIATE CASING

09/13/2010



Customer:
Well Description:

Job Date: 13-Sep-2010
UWI:

Sales Order #: 7626753

OptiCem v6.4.6
13-Sep-10 18:37