

DISTRICT I  
1625 N. French Dr., Hobbs, NM 88240

DISTRICT II  
1301 W. Grand Ave., Artesia, NM 88210

DISTRICT III  
1000 Rio Brazos Rd., Aztec, NM 87410

DISTRICT IV  
1220 St. Francis Dr., Santa Fe, NM 87505

State of New Mexico  
Geology, Minerals and Natural Resources Department

Form C-102  
Revised October 12, 2005

Submit to Appropriate District Office  
State Lease-4 copies  
Fee Lease-3 copies

RECEIVED

MAR 29 2011

HOBBS

OIL CONSERVATION DIVISION

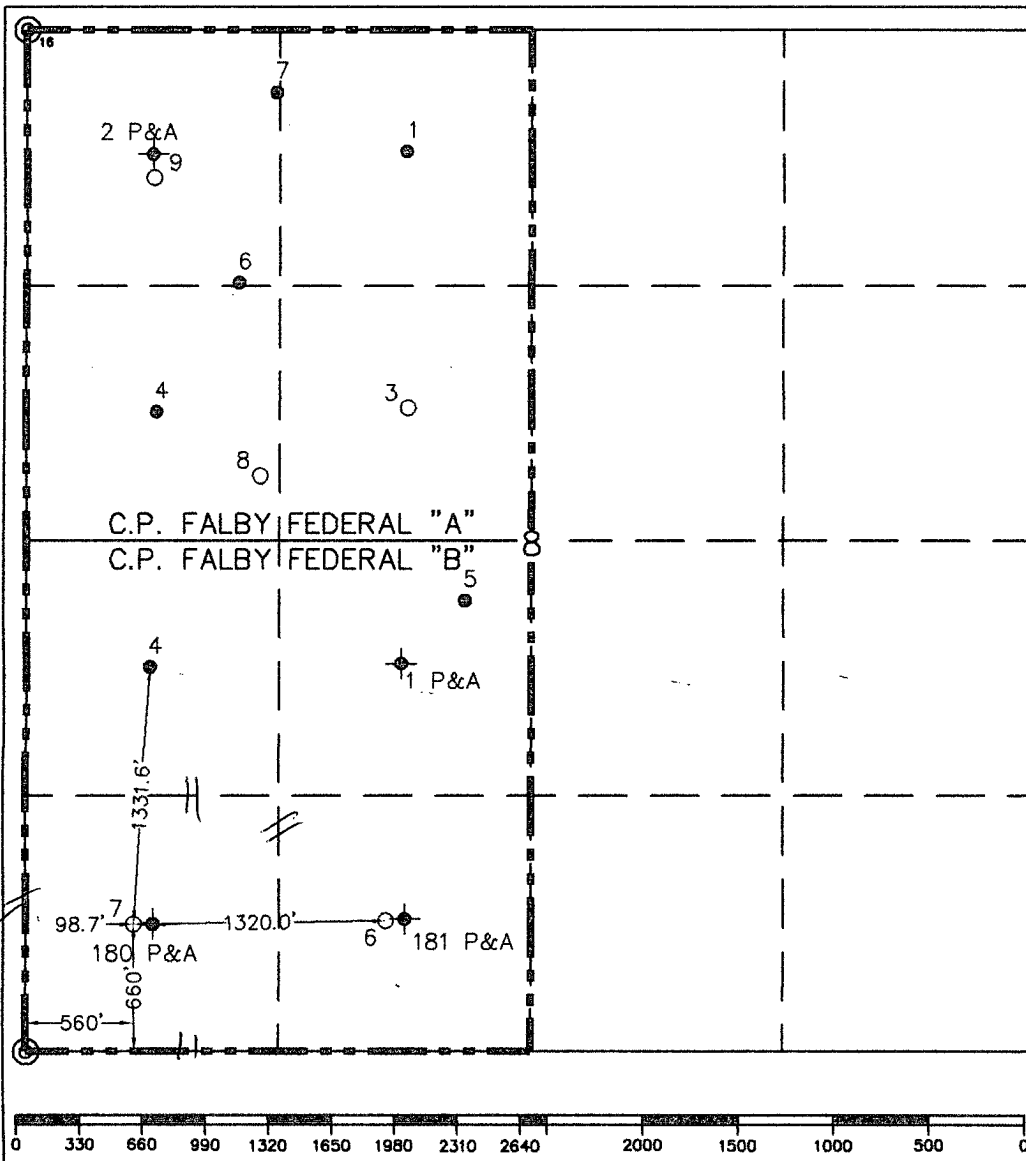
1220 South St. Francis Drive  
Santa Fe, NM 87505

★ ☒ AMENDED REPORT

WELL LOCATION AND ACREAGE DEDICATION PLAT

1 API Number 30-025-39982		2 Pool Code 6660		3 Pool Name Blindung Oil & Gas			
4 Property Code 30033		5 Property Name C.P. FALBY FEDERAL B		6 Well Number 7			
7 OGRID No. 4323		8 Operator Name CHEVRON USA, INC.		9 Elevation 3410' ★			
10 Surface Location							
UL or lot no. M	Section 8	Township 22-S	Range 37-E	Lot Idn 660'	Feet from the North/South line South 560'	East/West line West	County Lea
11 Bottom Hole Location If Different From Surface							
UL or lot no.	Section	Township	Range	Lot Idn	Feet from the North/South line	Feet from the	East/West line County
12 Dedicated Acres 40		13 Joint or Infill		14 Consolidation Code		15 Order No.	

NO ALLOWABLE WILL BE ASSIGNED TO THIS COMPLETION UNTIL ALL INTERESTS HAVE BEEN CONSOLIDATED  
OR A NON-STANDARD UNIT HAS BEEN APPROVED BY THE DIVISION.



17 OPERATOR CERTIFICATION

I hereby certify that the information contained herein is true and complete to the best of my knowledge and belief, and that this organization either owns a working interest or unleased mineral interest in the land including the proposed bottom hole location or has a right to drill this well at this location pursuant to a contract with an owner of such a mineral or working interest or to a voluntary pooling agreement or a compulsory pooling order heretofore entered by the division.

Signature: Denise Pinkerton  
Date: 3/28/11

Printed Name: DENISE PINKERTON

18 SURVEYOR CERTIFICATION

I hereby certify that the well location shown on this plat was plotted from field notes of actual surveys made by me or under my supervision, and that the same is true and correct to the best of my knowledge and belief.

4/2 & 10/10

Date of Survey

Signature & Seal of Professional Surveyor:

Signature: [Handwritten Signature]  
Certificate No.: 7254

○ = Staked Location • = Producing Well ⊕ = Injection Well ⊕ = Water Supply Well ⊕ = Plugged & Abandon Well  
⊕ = Found Section Corner, 2 or 3" Iron Pipe & GLO B.C. ○ = Found 1/4 Section Corner, 1" Iron Pipe & GLO B.C.

ADDITIONAL INFORMATION ON THE LOCATION

State Plane Coordinates			
Northing 511459.80 (1927 NAD= 511400.45)		Easting 893645.62 (1927 NAD= 852460.79)	
Latitude 32°24'03.244"		Longitude 103°11'30.658"	
Zone	North American Datum	Combined Grid Factor	Coordinate File
East	1983/HARN	0.999888168	Weatherly83E.crd
Drawing File	Field Book		
Weatherly83E.Dwg	Lea #24, Pg. 45 Revised: 3/24/11 by GMR		

APR 06 2011