

STATE OF NEW MEXICO  
ENERGY AND MINERALS DEPARTMENT

OIL CONSERVATION DIVISION  
P. O. BOX 2088  
SANTA FE, NEW MEXICO 375

RECEIVED

APR 05 2011

Form C-102  
Revised 10-1-79

All distances must be from the outer boundaries of the Section.

HOBBSSOCD

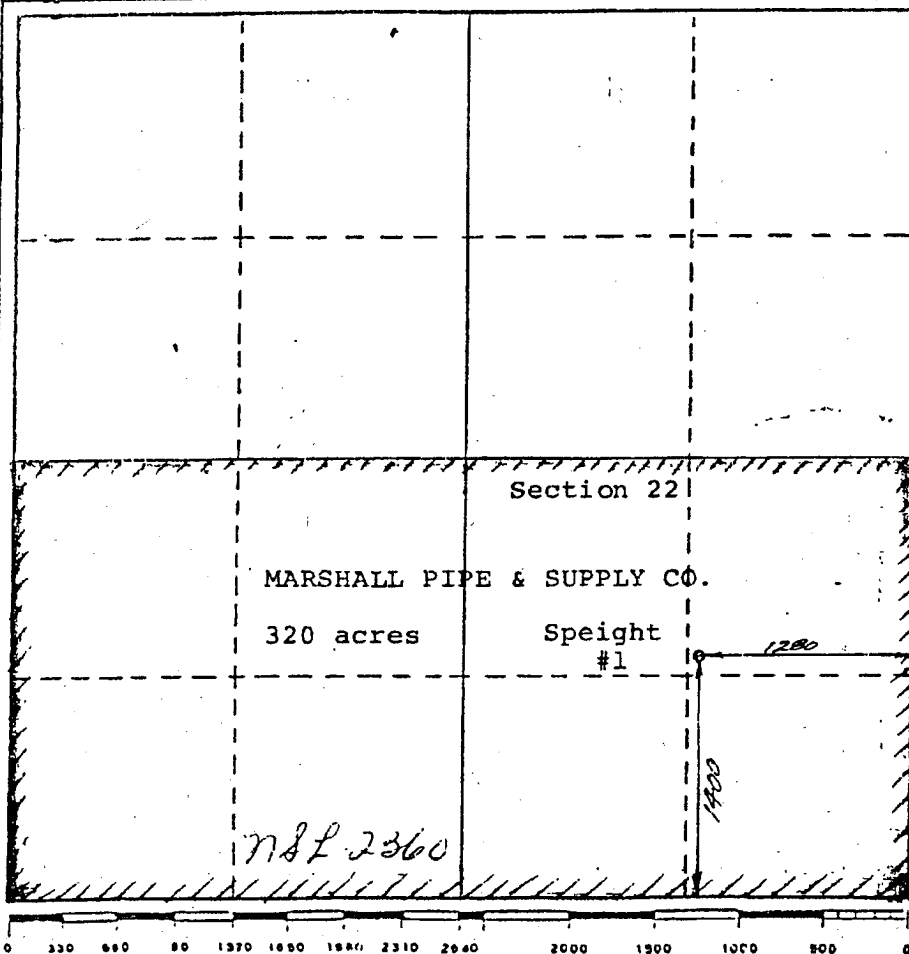
Operator <b>Marshall Pipe &amp; Supply Co.</b>			Lease <b>Speight</b>		Well No. <b>1</b>
Unit Letter <b>I</b>	Section <b>22</b>	Township <b>2 South</b>	Range <b>29 East</b>	County <b>Roosevelt</b>	
Actual Footage Location of Well: <b>1400</b> feet from the <b>South</b> line and <b>1280</b> feet from the <b>East</b> line					
Ground Level Elev. <b>4388</b>	Producing Formation	Pool <b>Penn</b>	Dedicated Acreage: <b>320</b> Acres		

1. Outline the acreage dedicated to the subject well by colored pencil or hachure marks on the plat below.
2. If more than one lease is dedicated to the well, outline each and identify the ownership thereof (both as to working interest and royalty).
3. If more than one lease of different ownership is dedicated to the well, have the interests of all owners been consolidated by communitization, unitization, force-pooling, etc?

☒ Yes ☐ No If answer is "yes," type of consolidation Communitization

If answer is "no," list the owners and tract descriptions which have actually been consolidated. (Use reverse side of this form if necessary.)

No allowable will be assigned to the well until all interests have been consolidated (by communitization, unitization, forced-pooling, or otherwise) or until a non-standard unit, eliminating such interests, has been approved by the Division.



CERTIFICATION

I hereby certify that the information contained herein is true and complete to the best of my knowledge and belief.

Name **J. W. Marshall**

Position **Partner/ OPERATOR**

Company **MARSHALL PIPE & SUPPLY CO.**

Date **July 2nd, 1987**

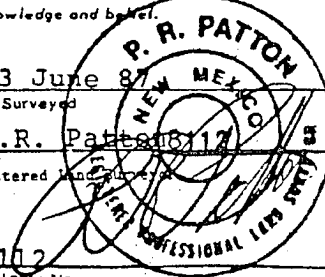
I hereby certify that the well location shown on this plat was plotted from field notes of actual surveys made by me or under my supervision, and that the same is true and correct to the best of my knowledge and belief.

**23 June 87**  
Date Surveyed

**P.R. Patton**

Registered Land Surveyor

**8112**  
Certificate No.



STATE OF NEW MEXICO  
ENERGY AND MINERALS DEPARTMENT

OIL CONSERVATION DIVISION  
P. O. BOX 2088  
SANTA FE, NEW MEXICO 87501

RECEIVED

Form C-102  
Revised 10-1-79

APR 05 2011

All distances must be from the outer boundaries of the Section.

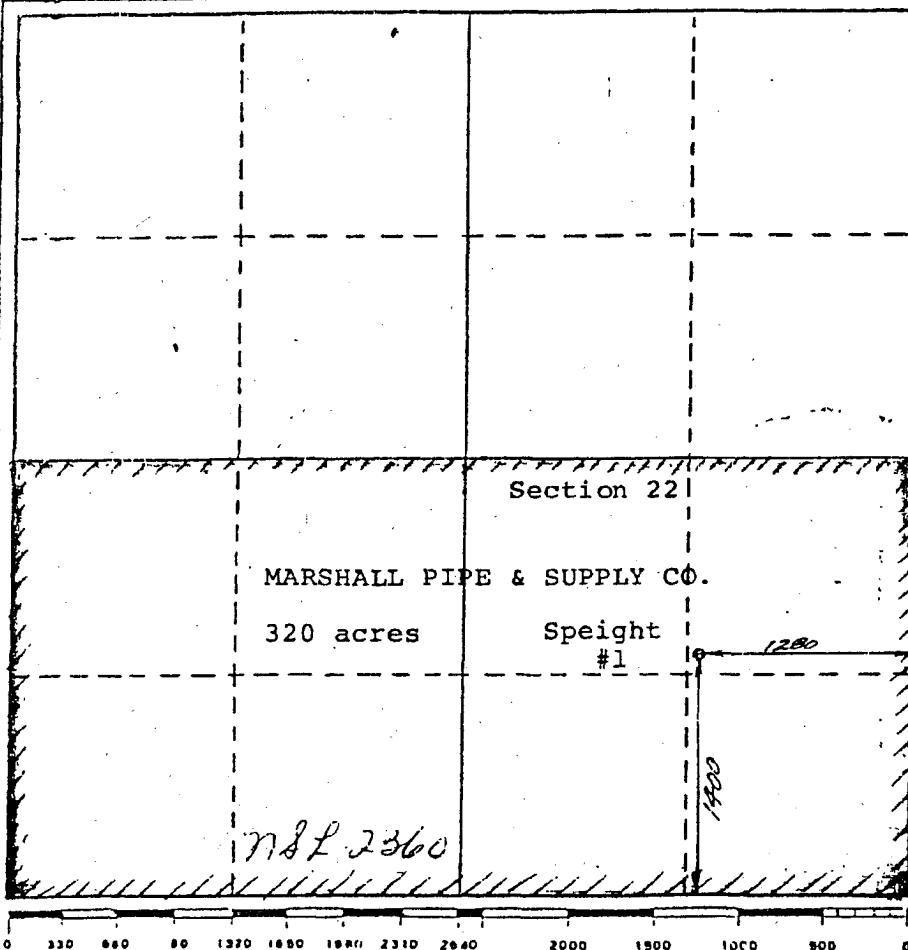
Operator <b>Marshall Pipe &amp; Supply Co.</b>			Lease <b>Speight</b>		Well No. <b>1</b>
Unit Letter <b>I</b>	Section <b>22</b>	Township <b>2 South</b>	Range <b>29 East</b>	County <b>Roosevelt</b>	
Actual Footage Location of Well: <b>1400</b> feet from the <b>South</b> line and <b>1280</b> feet from the <b>East</b> line					
Ground Level Elev. <b>4388</b>	Producing Formation		Pool <b>montoya</b>	Dedicated Acreage: <b>320</b> Acres	

- Outline the acreage dedicated to the subject well by colored pencil or hachure marks on the plat below.
- If more than one lease is dedicated to the well, outline each and identify the ownership thereof (both as to working interest and royalty).
- If more than one lease of different ownership is dedicated to the well, have the interests of all owners been consolidated by communitization, unitization, force-pooling, etc?

☒ Yes ☐ No If answer is "yes," type of consolidation Communitization

If answer is "no," list the owners and tract descriptions which have actually been consolidated. (Use reverse side of this form if necessary.)

No allowable will be assigned to the well until all interests have been consolidated (by communitization, unitization, forced-pooling, or otherwise) or until a non-standard unit, eliminating such interests, has been approved by the Division.



CERTIFICATION

I hereby certify that the information contained herein is true and complete to the best of my knowledge and belief.

Name **J. W. Marshall**

Position **Partner/ OPERATOR**

Company **MARSHALL PIPE & SUPPLY CO.**

Date **July 2nd, 1987**

I hereby certify that the well location shown on this plat was plotted from field notes of actual surveys made by me or under my supervision, and that the same is true and correct to the best of my knowledge and belief.

**23 June 87**  
Date Surveyed

**P.R. Patton**

Registered Professional Land Surveyor

**8112**  
Certificate No.

