

DISTRICT I
1625 N. FRENCH DR., HOBBS, NM 88240

State of New Mexico
Energy, Minerals and Natural Resources Department

RECEIVED

APR 07 2011

Form C-102

DISTRICT II
1301 W. GRAND AVENUE, ARTESIA, NM 88210

OIL CONSERVATION DIVISION

11885 SOUTH ST. FRANCIS DR.
Santa Fe, New Mexico 87505

Revised October 12, 2005
Submit to Appropriate District Office
State Lease - 4 Copies
Fee Lease - 3 Copies

DISTRICT III
1000 RIO BRAZOS RD., AZTEC, NM 87410

DISTRICT IV
11885 S. ST. FRANCIS DR., SANTA FE, NM 87505

WELL LOCATION AND ACREAGE DEDICATION PLAT

☐ AMENDED REPORT

API Number 30-025-39732	Pool Code 66660	Pool Name BLUEBRY OIL + GAS (OIL)
Property Code 22879	Property Name OWEN "B"	Well Number 13
OGRID No. 873	Operator Name APACHE CORPORATION	Elevation 3443'

Surface Location

UL or lot No.	Section	Township	Range	Lot Idn	Feet from the	North/South line	Feet from the	East/West line	County
N	34	21-S	37-E		1120	SOUTH	1650	WEST	LEA

Bottom Hole Location If Different From Surface

UL or lot No.	Section	Township	Range	Lot Idn	Feet from the	North/South line	Feet from the	East/West line	County
N	34	21-S	37-E		1287	SOUTH	1378	WEST	LEA
Dedicated Acres 40	Joint or Infill	Consolidation Code	Order No. DHC-HOB-0413						

NO ALLOWABLE WILL BE ASSIGNED TO THIS COMPLETION UNTIL ALL INTERESTS HAVE BEEN CONSOLIDATED
OR A NON-STANDARD UNIT HAS BEEN APPROVED BY THE DIVISION

<p>GEODETIC COORDINATES NAD 27 NME SURFACE HOLE LOCATION Y=522546.3 N X=863989.9 E</p> <p>LAT.=32.431068° N LONG.=104.153635° W</p> <p>LAT.=32° 25' 51.84" N LONG.=103° 09' 13.09" W</p> <p>GRID. AZ. = 371°39'00" HORZ. DIST. 371.5'</p> <p>1378' 1650'</p> <p>1287' 1120'</p> <p>BH</p> <p>S.L.</p> <p>BOTTOM HOLE LOCATION Y=522732.4 N X=863668.6 E</p>	<p>OPERATOR CERTIFICATION</p> <p>I hereby certify that the information herein is true and complete to the best of my knowledge and belief, and that this organization either owns a working interest or unleased mineral interest in the land including the proposed bottom hole location or has a right to drill this well at this location pursuant to a contract with an owner of such mineral or working interest, or to a voluntary pooling agreement or a compulsory pooling order heretofore entered by the division.</p> <p><i>Reesa Holland</i> 4/5/11 Signature Date REESEA HOLLAND Printed Name</p> <p>SURVEYOR CERTIFICATION</p> <p>I hereby certify that the well location shown on this plat was plotted from field notes of actual surveys made by me or under my supervision, and that the same is true and correct to the best of my belief.</p> <p>JANUARY 20, 2010 NEW MEXICO Date Surveyed Signature & Seal of Professional Surveyor 3239 <i>Ronald J. Eidson</i> 01/25/2010 Certificate No. GARY C. EIDSON 12841 RONALD J. EIDSON 3239</p>
---	--

DISTRICT I
1625 N. FRENCH DR., HOBBS, NM 88240

DISTRICT II
1301 W. GRAND AVENUE, ARTESIA, NM 88210

DISTRICT III
1000 RIO BRAZOS RD., AZTEC, NM 87410

DISTRICT IV
11885 S. ST. FRANCIS DR., SANTA FE, NM 87505

State of New Mexico
Energy, Minerals and Natural Resources Department

OIL CONSERVATION DIVISION
11885 SOUTH ST. FRANCIS DR.
Santa Fe, New Mexico 87505

RECEIVED
APR 07 2011
HOBBSOCD

Form C-102
Revised October 12, 2005
Submit to Appropriate District Office
State Lease - 4 Copies
Fee Lease - 3 Copies

WELL LOCATION AND ACREAGE DEDICATION PLAT

☐ AMENDED REPORT

API Number 30-025-39732	Pool Code 602 40	Pool Name TUBB OIL & GAS (OIL)
Property Code 22879	Property Name OWEN "B"	Well Number 13
OGRID No. 873	Operator Name APACHE CORPORATION	Elevation 3443'

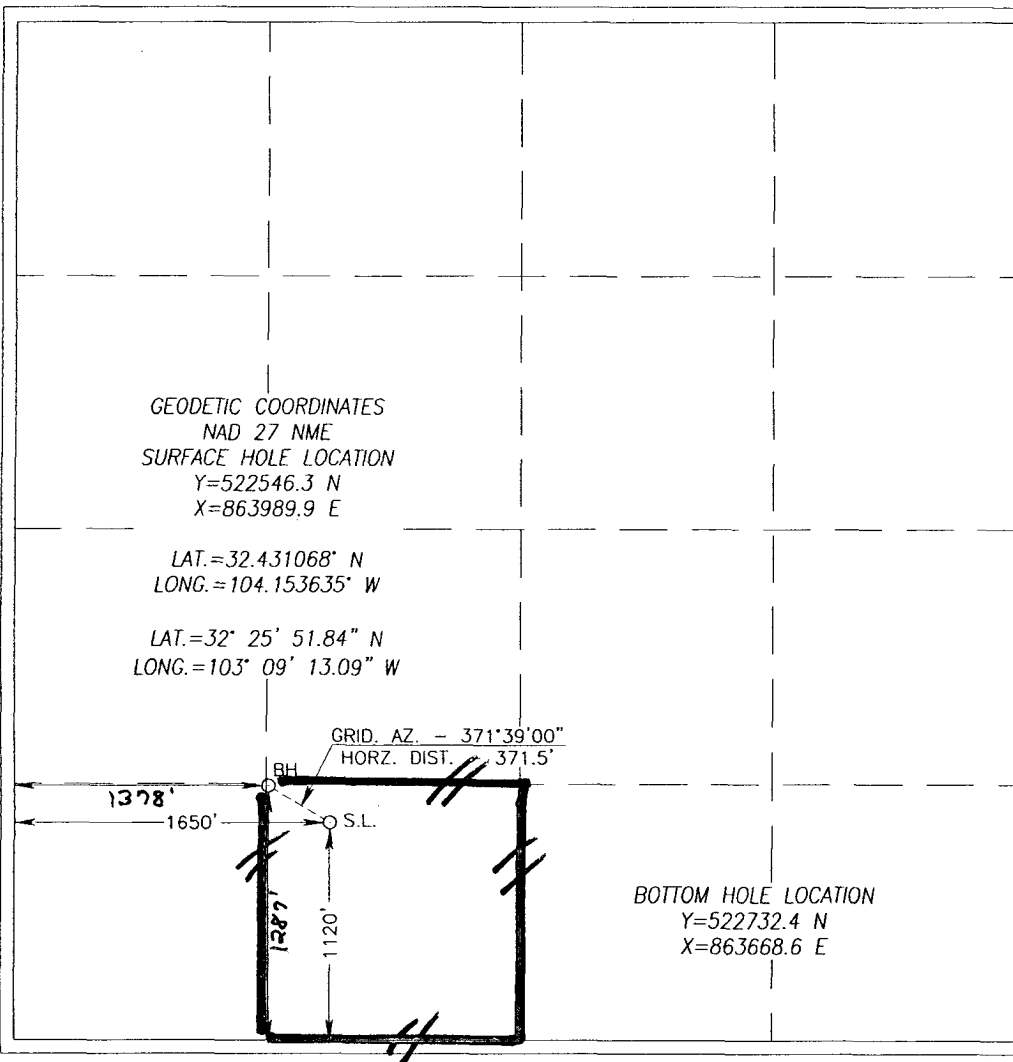
Surface Location

UL or lot No.	Section	Township	Range	Lot Idn	Feet from the	North/South line	Feet from the	East/West line	County
N	34	21-S	37-E		1120	SOUTH	1650	WEST	LEA

Bottom Hole Location If Different From Surface

UL or lot No.	Section	Township	Range	Lot Idn	Feet from the	North/South line	Feet from the	East/West line	County
N	34	21-S	37-E		1287	SOUTH	1378	WEST	LEA
Dedicated Acres 40	Joint or Infill	Consolidation Code	Order No. DHC-HOB-0413						

NO ALLOWABLE WILL BE ASSIGNED TO THIS COMPLETION UNTIL ALL INTERESTS HAVE BEEN CONSOLIDATED
OR A NON-STANDARD UNIT HAS BEEN APPROVED BY THE DIVISION



OPERATOR CERTIFICATION

I hereby certify that the information herein is true and complete to the best of my knowledge and belief, and that this organization either owns a working interest or unleased mineral interest in the land including the proposed bottom hole location or has a right to drill this well at this location pursuant to a contract with an owner of such mineral or working interest, or to a voluntary pooling agreement or a compulsory pooling order heretofore entered by the division.

Reese Holland 4/5/11
Signature Date

REESA HOWARD
Printed Name

SURVEYOR CERTIFICATION

I hereby certify that the well location shown on this plat was plotted from field notes of actual surveys made by me or under my supervision, and that the same is true and correct to the best of my belief.

Date Surveyed
Signature & Seal of 239
Professional Surveyor

Ronald J. Eidson 01/25/2010
10.11.003.6

Certificate No. GARY G. EIDSON 12641
RONALD J. EIDSON 3239

RECEIVED

APR 07 2011

HOBBSDC

Form C-102

Revised October 12, 2005

Submit to Appropriate District Office

State Lease - 4 Copies

Fee Lease - 3 Copies

DISTRICT I
1625 N. FRENCH DR., HOBBS, NM 88240

DISTRICT II
1301 W. GRAND AVENUE, ARTESIA, NM 88210

DISTRICT III
1000 RIO BRAZOS RD., AZTEC, NM 87410

DISTRICT IV
11885 S. ST. FRANCIS DR., SANTA FE, NM 87505

State of New Mexico
Energy, Minerals and Natural Resources Department

OIL CONSERVATION DIVISION
11885 SOUTH ST. FRANCIS DR.
Santa Fe, New Mexico 87505

WELL LOCATION AND ACREAGE DEDICATION PLAT

☐ AMENDED REPORT

API Number 30-025-39732	Pool Code 19190	Pool Name DRINKARD
Property Code 22879	Property Name OWEN "B"	Well Number 13
OGRID No. 873	Operator Name APACHE CORPORATION	Elevation 3443'

Surface Location

UL or lot No.	Section	Township	Range	Lot Idn	Feet from the	North/South line	Feet from the	East/West line	County
N	34	21-S	37-E		1120	SOUTH	1650	WEST	LEA

Bottom Hole Location If Different From Surface

UL or lot No.	Section	Township	Range	Lot Idn	Feet from the	North/South line	Feet from the	East/West line	County
N	34	21-S	37-E		1287	SOUTH	1378	WEST	LEA
Dedicated Acres 40	Joint or Infill	Consolidation Code	Order No. DHC-HOB-0412						

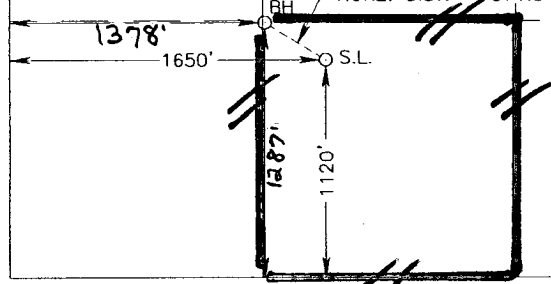
NO ALLOWABLE WILL BE ASSIGNED TO THIS COMPLETION UNTIL ALL INTERESTS HAVE BEEN CONSOLIDATED
OR A NON-STANDARD UNIT HAS BEEN APPROVED BY THE DIVISION

GEODETIC COORDINATES
NAD 27 NME
SURFACE HOLE LOCATION
Y=522546.3 N
X=863989.9 E

LAT.=32.431068° N
LONG.=104.153635° W

LAT.=32° 25' 51.84" N
LONG.=103° 09' 13.09" W

GRID. AZ. - 371°39'00"
HORZ. DIST. - 371.5'



BOTTOM HOLE LOCATION
Y=522732.4 N
X=863668.6 E

OPERATOR CERTIFICATION

I hereby certify that the information herein is true and complete to the best of my knowledge and belief, and that this organization either owns a working interest or unleased mineral interest in the land including the proposed bottom hole location or has a right to drill this well at this location pursuant to a contract with an owner of such mineral or working interest, or to a voluntary pooling agreement or a compulsory pooling order heretofore entered by the division.

Reesa Holland 4/5/11
Signature Date

REESEA HOLLAND
Printed Name

SURVEYOR CERTIFICATION

I hereby certify that the well location shown on this plat was plotted from field notes of actual surveys made by me or under my supervision, and that the same is true and correct to the best of my belief.

Date Surveyed: **JANUARY 20, 2010**
Signature & Seal of Professional Surveyor **0239**

Ronald J. Eidson 01/23/2010
10111200160

Certificate No. **GARY G. EIDSON 12841**
RONALD J. EIDSON 3239

DISTRICT I
1625 N. FRENCH DR., HOBBS, NM 88240

DISTRICT II
1301 W. GRAND AVENUE, ARTESIA, NM 88210

DISTRICT III
1000 RIO BRAZOS RD., AZTEC, NM 87410

DISTRICT IV
11885 S. ST. FRANCIS DR., SANTA FE, NM 87505

State of New Mexico
Energy, Minerals and Natural Resources Department

OIL CONSERVATION DIVISION
11885 SOUTH ST. FRANCIS DR.
Santa Fe, New Mexico 87505

RECEIVED

APR 07 2011

HOBBSUCD

Form C-102

Revised October 12, 2005

Submit to Appropriate District Office

State Lease - 4 Copies

Fee Lease - 3 Copies

WELL LOCATION AND ACREAGE DEDICATION PLAT

☐ AMENDED REPORT

API Number 30-025-39732	Pool Code 62700	Pool Name WANTZ; ABO
Property Code 22879	Property Name OWEN "B"	Well Number 13
OGRID No. 873	Operator Name APACHE CORPORATION	Elevation 3443'

Surface Location

UL or lot No.	Section	Township	Range	Lot Idn	Feet from the	North/South line	Feet from the	East/West line	County
N	34	21-S	37-E		1120	SOUTH	1650	WEST	LEA

Bottom Hole Location If Different From Surface

UL or lot No.	Section	Township	Range	Lot Idn	Feet from the	North/South line	Feet from the	East/West line	County
N	34	21-S	37-E		1287	SOUTH	1378	WEST	LEA
Dedicated Acres 40	Joint or Infill	Consolidation Code	Order No. DHC-HOB-0412						

NO ALLOWABLE WILL BE ASSIGNED TO THIS COMPLETION UNTIL ALL INTERESTS HAVE BEEN CONSOLIDATED
OR A NON-STANDARD UNIT HAS BEEN APPROVED BY THE DIVISION

<p>GEODETIC COORDINATES NAD 27 NME SURFACE HOLE LOCATION Y=522546.3 N X=863989.9 E</p> <p>LAT.=32.431068° N LONG.=104.153635° W</p> <p>LAT.=32° 25' 51.84" N LONG.=103° 09' 13.09" W</p> <p>GRID. AZ. - 371°39'00" HORZ. DIST. - 371.5'</p> <p>1378' 1650'</p> <p>1287' 1120'</p> <p>BOTTOM HOLE LOCATION Y=522732.4 N X=863668.6 E</p>	<p>OPERATOR CERTIFICATION</p> <p>I hereby certify that the information herein is true and complete to the best of my knowledge and belief, and that this organization either owns a working interest or unleased mineral interest in the land including the proposed bottom hole location or has a right to drill this well at this location pursuant to a contract with an owner of such mineral or working interest, or to a voluntary pooling agreement or a compulsory pooling order heretofore entered by the division.</p> <p><i>Reesa Holland</i> 4/5/11 Signature Date REESEA HOLLAND Printed Name</p> <p>SURVEYOR CERTIFICATION</p> <p>I hereby certify that the well location shown on this plat was plotted from field notes of actual surveys made by me or under my supervision, and that the same is true and correct to the best of my belief.</p> <p>RONALD J. EIDSON JANUARY 2010 Date Surveyed Signature & Seal Professional Surveyor DSS <i>Ronald J. Eidson</i> 10/27/2010 10.11.0016</p> <p>Certificate No. GARY G. EIDSON 12641 RONALD J. EIDSON 3239</p>
---	---