

District I  
1625 N. French Dr., Hobbs, NM 88240  
District II  
1301 W. Grand Avenue, Artesia, NM 88210  
District III  
1000 Rio Brazos Rd., Aztec, NM 87410  
District IV  
1220 S. St. Francis Dr., Santa Fe, NM 87505

**RECEIVED**  
State of New Mexico  
Energy, Minerals & Natural Resources  
Oil Conservation Division  
1220 South St. Francis Dr.  
Santa Fe, NM 87505  
**APR 12 2011**  
**HOBBS, NM**

Form C-104  
Revised October 15, 2009

Submit one copy to appropriate District Office

AMENDED REPORT

**I. REQUEST FOR ALLOWABLE AND AUTHORIZATION TO TRANSPORT**

<sup>1</sup> Operator name and Address <b>COG Operating LLC</b> 550 West Texas Ave, Suite 100 Midland, TX 79701		<sup>2</sup> OGRID Number 229137
		<sup>3</sup> Reason for Filing Code/ Effective Date NW effective 3/23/11
<sup>4</sup> API Number 30 - 025 - 39838	<sup>5</sup> Pool Name Maljamar; Yeso, West	<sup>6</sup> Pool Code 44500
<sup>7</sup> Property Code 302516	<sup>8</sup> Property Name Leaker CC State	<sup>9</sup> Well Number 24

**II. <sup>10</sup> Surface Location**

Ul or lot no.	Section	Township	Range	Lot Idn	Feet from the	North/South Line	Feet from the	East/West line	County
B	16	17S	32E		990	North	2310	East	Lea

**<sup>11</sup> Bottom Hole Location**

Ul or lot no.	Section	Township	Range	Lot Idn	Feet from the	North/South line	Feet from the	East/West line	County
<sup>12</sup> Lse Code S	<sup>13</sup> Producing Method Code P	<sup>14</sup> Gas Connection Date 3/23/11	<sup>15</sup> C-129 Permit Number	<sup>16</sup> C-129 Effective Date	<sup>17</sup> C-129 Expiration Date				

**III. Oil and Gas Transporters**

<sup>18</sup> Transporter OGRID	<sup>19</sup> Transporter Name and Address	<sup>20</sup> O/G/W
15694	Navajo Refining Co.	O
024650	Frontier Energy Services	G

**IV. Well Completion Data**

<sup>21</sup> Spud Date 2/20/11	<sup>22</sup> Ready Date 3/23/11	<sup>23</sup> TD 7035	<sup>24</sup> PBTB 6975	<sup>25</sup> Perforations 5530 - 6770	<sup>26</sup> DHC, MC
<sup>27</sup> Hole Size	<sup>28</sup> Casing & Tubing Size	<sup>29</sup> Depth Set	<sup>30</sup> Sacks Cement		
17-1/2	13-3/8	655	550		
11	8-5/8	2158	600		
7-7/8	5-1/2	7020	1150		
	2-7/8 tbg	6657			

**V. Well Test Data**

<sup>31</sup> Date New Oil 3/28/11	<sup>32</sup> Gas Delivery Date 3/28/11	<sup>33</sup> Test Date 4/3/11	<sup>34</sup> Test Length 24 hrs	<sup>35</sup> Tbg. Pressure 70	<sup>36</sup> Csg. Pressure 70
<sup>37</sup> Choke Size	<sup>38</sup> Oil 120	<sup>39</sup> Water 431	<sup>40</sup> Gas 161	<sup>41</sup> Test Method P	

<sup>42</sup> I hereby certify that the rules of the Oil Conservation Division have been complied with and that the information given above is true and complete to the best of my knowledge and belief.  
Signature: *Netha Aaron*  
Printed name: Netha Aaron  
Title: Regulatory Analyst  
E-mail Address: oaaron@conchoresources.com  
Date: 4/5/11

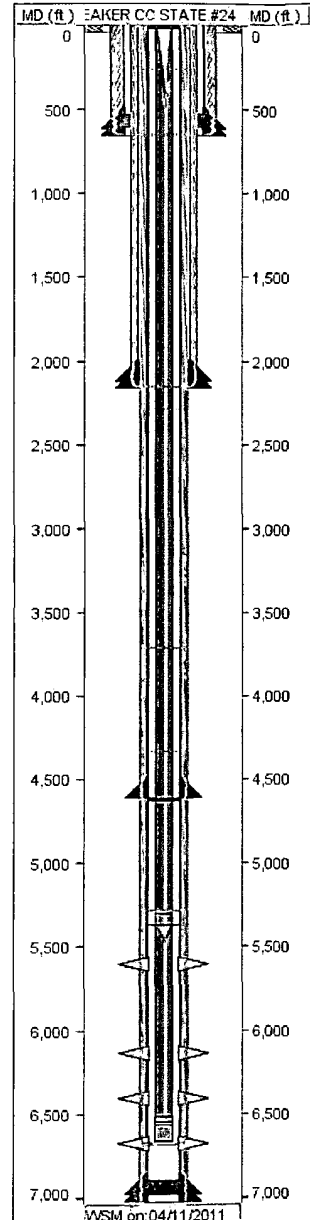
OIL CONSERVATION DIVISION  
Approved by: *[Signature]*  
Title: PETROLEUM ENGINEER  
Approval Date: APR 19 2011  
Phone: 432-818-2319

Well ID: 30-025-39838

Well Name: LEAKER CC STATE #24

Event#: 3.00

Report Dates: 04/11/2011



### PIPE SPECIFICATION

STRING NAME	SECTION NAME	JOINT COUNT	START DEPTH	END DEPTH	LENGTH	OD SIZE	ID SIZE	WT GRDNT	GRD	CONN
SURFACE	GUIDE SHOE		653.83	655.00	1.17					
SURFACE	CASING	1	613.68	653.83	40.15	13.38	12.71	48.0	H-40	STC
SURFACE	FLOAT COLLAR		613.68	613.68	0.00					
SURFACE	CASING	15	-4.26	613.68	617.94	13.38	12.71	48.0	H-40	STC
PRODUCTION	GUIDE SHOE		7018.54	7020.00	1.46					
PRODUCTION	CASING	1	6976.55	7018.54	41.99	5.50	4.89	17.0	L-80	LTC
PRODUCTION	FLOAT COLLAR		6975.30	6976.55	1.25					
PRODUCTION	CASING	56	4624.85	6975.30	2350.45	5.50	4.89	17.0	L-80	LTC
PRODUCTION	MARKER JOINT	1	4609.70	4624.85	15.15	5.50	4.89	17.0	L-80	LTC
PRODUCTION	CASING	110	17.20	4609.70	4592.50	5.50	4.89	17.0	L-80	LTC
PRODUCTION	LANDING COLLAR	1	-5.68	17.20	22.88	5.50	4.89	17.0	L-80	LTC
TUBING	BULL PLUG		6656.96	6657.34	0.38	2.88				8RD
TUBING	MUD ANCHOR	3	6559.39	6656.96	97.57	2.88		6.5	J55	8RD
TUBING	DESANDER		6540.29	6559.39	19.10	2.88				8RD
TUBING	PUMP BARREL		6510.84	6540.29	29.45	2.88				8RD
TUBING	TUBING	35	5372.13	6510.84	1138.71	2.88		6.5	J55	8RD
TUBING	TUBING ANCHOR		5369.13	5372.13	3.00	5.50				8RD
TUBING	TUBING	2	5304.04	5369.13	65.09	2.88		6.5	J55	8RD
TUBING	MARKER JOINT		5302.04	5304.04	2.00	2.88		6.5	J55	8RD
TUBING	TUBING	163	0.00	5302.04	5302.04	2.88		6.5	J55	8RD
INTERMEDIATE	GUIDE SHOE		2156.50	2158.00	1.50					
INTERMEDIATE	CASING	1	2116.96	2156.50	39.54	8.63	7.92	32.0	J-55	ST&C
INTERMEDIATE	FLOAT COLLAR		2115.46	2116.96	1.50					
INTERMEDIATE	CASING	52	17.76	2115.46	2119.61	8.63	7.92	32.0	J-55	ST&C

### CEMENTING

STRING NAME	STAGE #	LEAD TOP (est) (ft)	LEAD TOP (ver) (ft)	TAIL TOP (est) (ft)	TAIL TOP (ver) (ft)
CONDUCTOR	1				
SURFACE	1				
PRODUCTION	1				
INTERMEDIATE	1	0.0	0.0	1164.0	

### BHA STRING

DRILL EQUIP CODE	DESCRIPTION	LENGTH	OD SIZE	ID SIZE

### PERFORATION

ZONE	JOB REPORT DATE	ZONE NAME	TOP DEPTH	BOTTOM DEPTH	HOLE SIZE	PEN SIZE	SQUEEZED
1	03/18/2011	BLINBRY	6570.00	6770.00			
2	03/18/2011	BLINEBRY	6300.00	6500.00	0.41		N

Well ID: 30-025-39838

Well Name: LEAKER CC STATE #24

Event#: 3.00

Report Dates: 04/11/2011

PERFORATION							
ZONE	JOB REPORT DATE	ZONE NAME	TOP DEPTH	BOTTOM DEPTH	HOLE SIZE	PEN SIZE	SQUEEZED
3	03/18/2011	BLINEBRY	6030.00	6230.00			N
4	03/18/2011	PADDOCK	5530.00	5680.00			N