

RECEIVED

APR 21 2011

HOBBSOCD

DISTRICT I
1625 N. FRENCH DR., HOBBS, NM 88240

DISTRICT II
1301 W. GRAND AVENUE, ARTESIA, NM 88210

DISTRICT III
1000 RIO BRAZOS RD., AZITEC, NM 87410

DISTRICT IV
11885 S. ST. FRANCIS DR., SANTA FE, NM 87505

State of New Mexico
Energy, Minerals and Natural Resources Department

OIL CONSERVATION DIVISION
11885 SOUTH ST. FRANCIS DR.
Santa Fe, New Mexico 87505

Form C-102
Revised October 12, 2005
Submit to Appropriate District Office
State Lease - 4 Copies
Fee Lease - 3 Copies

WELL LOCATION AND ACREAGE DEDICATION PLAT

☐ AMENDED REPORT

API Number 30-025-40118	Pool Code 19190	Pool Name Drinkard
Property Code 306607	Property Name MARK OWEN	Well Number 28
OGRID No. 873	Operator Name APACHE CORPORATION	Elevation 3381'

Surface Location

UL or lot No. M	Section 35	Township 21-S	Range 37-E	Lot Idn	Feet from the 1310	North/South line SOUTH	Feet from the 467	East/West line WEST	County LEA
---------------------------	----------------------	-------------------------	----------------------	---------	------------------------------	----------------------------------	-----------------------------	-------------------------------	----------------------

Bottom Hole Location If Different From Surface

UL or lot No.	Section	Township	Range	Lot Idn	Feet from the	North/South line	Feet from the	East/West line	County
Dedicated Acres 40	Joint or Infill	Consolidation Code	Order No. NSL-6348-A; NSP-1935-B; SD-200409-C						

NO ALLOWABLE WILL BE ASSIGNED TO THIS COMPLETION UNTIL ALL INTERESTS HAVE BEEN CONSOLIDATED
OR A NON-STANDARD UNIT HAS BEEN APPROVED BY THE DIVISION

	<p>GEODETIC COORDINATES NAD 27 NME</p> <p>Y=522782.3 N X=868093.2 E</p> <p>LAT.=32.431591° N LONG.=104.140330° W</p> <p>LAT.=32°25'54" N LONG.=103°08'25" W</p>		<p>OPERATOR CERTIFICATION</p> <p>I hereby certify that the information herein is true and complete to the best of my knowledge and belief, and that this organization either owns a working interest or unleased mineral interest in the land including the proposed bottom hole location or has a right to drill this well at this location pursuant to a contract with an owner of such mineral or working interest, or to a voluntary pooling agreement or a compulsory pooling order heretofore entered by the division.</p> <p><i>Sorina L. Flores</i> 4/19/11 Signature Date</p> <p>Sorina L. Flores Printed Name</p>
	<p>SURVEYOR CERTIFICATION</p> <p>I hereby certify that the well location shown on this plat was plotted from field notes of actual surveys made by me or under my supervision, and that the same is true and correct to the best of my belief.</p> <p>DECEMBER 22, 2010</p> <p>Date Surveyed DSS</p> <p>Signature of Professional Surveyor <i>Ronald J. Eidson</i> 04/07/2011 Professional Surveyor No. 1011842</p>		<p>Certificate No. CARY EIDSON 12041 RONALD J. EIDSON 3239</p>

APR 21 2011

RECEIVED

gm

DISTRICT I
1625 N. FRENCH DR., HOBBS, NM 88240

APR 21 2011

State of New Mexico
Energy, Minerals and Natural Resources Department

Form C-102

Revised October 12, 2005

Submit to Appropriate District Office

State Lease - 4 Copies

Fee Lease - 3 Copies

DISTRICT II
1301 W. GRAND AVENUE, ARTESIA, NM 88210

HOBBSUCD

OIL CONSERVATION DIVISION

11885 SOUTH ST. FRANCIS DR.

Santa Fe, New Mexico 87505

DISTRICT III
1000 RIO BRAZOS RD., AZTEC, NM 87410

DISTRICT IV
11885 S. ST. FRANCIS DR., SANTA FE, NM 87505

WELL LOCATION AND ACREAGE DEDICATION PLAT

☐ AMENDED REPORT

API Number 30-025-46116	Pool Code 72480	Pool Name Blinbry Oil & Gas (Pro Gas)
Property Code 306607	Property Name MARK OWEN	Well Number 28
OGRID No. 873	Operator Name APACHE CORPORATION	Elevation 3381'

Surface Location

UL or lot No.	Section	Township	Range	Lot Ida	Feet from the	North/South line	Feet from the	East/West line	County
M	35	21-S	37-E		1310	SOUTH	467	WEST	LEA

Bottom Hole Location If Different From Surface

UL or lot No.	Section	Township	Range	Lot Ida	Feet from the	North/South line	Feet from the	East/West line	County
Dedicated Acres 120	Joint or Infill	Consolidation Code	Order No. NSL-6348-A; NSP-1935-B; SD-200409-C						

NO ALLOWABLE WILL BE ASSIGNED TO THIS COMPLETION UNTIL ALL INTERESTS HAVE BEEN CONSOLIDATED
OR A NON-STANDARD UNIT HAS BEEN APPROVED BY THE DIVISION

	<p>GEODETIC COORDINATES NAD 27 NME</p> <p>Y=522782.3 N X=868093.2 E</p> <p>LAT.=32.431591° N LONG.=104.140330° W</p> <p>LAT.=32°25'54" N LONG.=103°08'25" W</p>	<p>OPERATOR CERTIFICATION</p> <p>I hereby certify that the information herein is true and complete to the best of my knowledge and belief, and that this organization either owns a working interest or unleased mineral interest in the land including the proposed bottom hole location or has a right to drill this well at this location pursuant to a contract with an owner of such mineral or working interest, or to a voluntary pooling agreement or a compulsory pooling order heretofore entered by the division.</p> <p><i>Sarina Flores</i> 4/19/11 Signature Date</p> <p>Sarina L. Flores Printed Name</p>
		<p>SURVEYOR CERTIFICATION</p> <p>I hereby certify that the well location shown on this plat was plotted from field notes of actual surveys made by me or under my supervision, and that the same is true and correct to the best of my belief.</p> <p>DECEMBER 22, 2010</p> <p>Date Surveyed DSS</p> <p>Signature & Seal of Professional Surveyor <i>Ronald J. Eidson</i> 4/07/2011 10.11/18425</p> <p>Certificate No. GARY G. EIDSON 12641 RONALD J. EIDSON 3239</p>

APR 21 2011

RECEIVED

FW

DISTRICT I
1625 N. FRENCH DR., HOBBS, NM 88240

APR 21 2011

State of New Mexico
Energy, Minerals and Natural Resources Department

DISTRICT II
1301 W. GRAND AVENUE, ARTESIA, NM 88210

HOBBS

OIL CONSERVATION DIVISION

DISTRICT III
1000 RIO BRAZOS RD., AZTEC, NM 87410

11885 SOUTH ST. FRANCIS DR.
Santa Fe, New Mexico 87505

Form C-102

Revised October 12, 2005

Submit to Appropriate District Office

State Lease - 4 Copies

Fee Lease - 3 Copies

DISTRICT IV
11885 S. ST. FRANCIS DR., SANTA FE, NM 87505

WELL LOCATION AND ACREAGE DEDICATION PLAT

☐ AMENDED REPORT

API Number 30-025-40116	Pool Code 86440	Pool Name Tubb Oil and Gas (Pro Gas)
Property Code 306607	Property Name MARK OWEN	Well Number 28
OGRID No. 873	Operator Name APACHE CORPORATION	Elevation 3381'

Surface Location

UL or lot No.	Section	Township	Range	Lot Idn	Feet from the	North/South line	Feet from the	East/West line	County
M	35	21-S	37-E		1310	SOUTH	467	WEST	LEA

Bottom Hole Location If Different From Surface

UL or lot No.	Section	Township	Range	Lot Idn	Feet from the	North/South line	Feet from the	East/West line	County

Dedicated Acres 160	Joint or Infill	Consolidation Code	Order No. NSL-6348-A; NSP-1935-B; SD-200409-C
-------------------------------	-----------------	--------------------	---

NO ALLOWABLE WILL BE ASSIGNED TO THIS COMPLETION UNTIL ALL INTERESTS HAVE BEEN CONSOLIDATED
OR A NON-STANDARD UNIT HAS BEEN APPROVED BY THE DIVISION

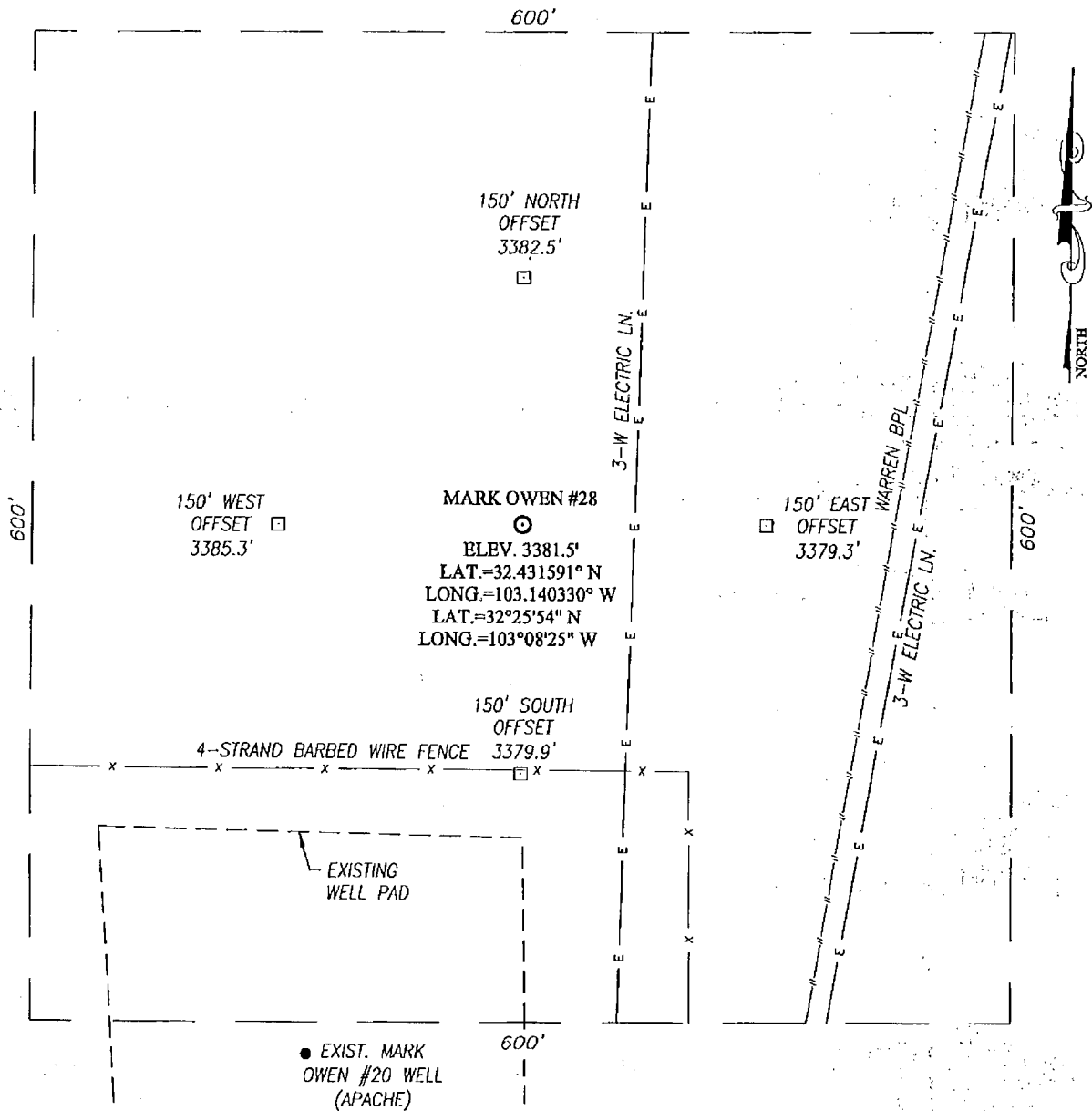
	<p>GEODETIC COORDINATES NAD 27 NME</p> <p>Y=522782.3 N X=868093.2 E</p> <p>LAT.=32.431591° N LONG.=104.140330° W</p> <p>LAT.=32°25'54" N LONG.=103°08'25" W</p>	<p>OPERATOR CERTIFICATION</p> <p>I hereby certify that the information herein is true and complete to the best of my knowledge and belief, and that this organization either owns a working interest or unleased mineral interest in the land including the proposed bottom hole location or has a right to drill this well at this location pursuant to a contract with an owner of such mineral or working interest, or to a voluntary pooling agreement or a compulsory pooling order heretofore entered by the division.</p> <p><i>Sorina L. Flores</i> 4/19/11 Signature Date</p> <p>Sorina L. Flores Printed Name</p>
	<p>SURVEYOR CERTIFICATION</p> <p>I hereby certify that the well location shown on this plat was plotted from field notes of actual surveys made by me or under my supervision, and that the same is true and correct to the best of my belief.</p> <p>DECEMBER 22, 2010</p> <p>Date Surveyed DSS</p> <p>Signature & Seal of Professional Surveyor</p> <p><i>Ronald J. Eidson</i> 01/07/2011 RONALD J. EIDSON 12841 PROFESSIONAL SURVEYOR 3239</p>	

APR 21 2011

SECTION 35, TOWNSHIP 21 SOUTH, RANGE 37 EAST, N.M.P.M.,

LEA COUNTY,

NEW MEXICO



DIRECTIONS TO LOCATION

FROM THE ST. HWY. #18 AND ST. HWY. #234
(TEXAS RD.), GO WEST ON ST. HWY. #234 APPROX.
1.0 MILE. TURN LEFT AND GO SOUTH APPROX. 0.1
MILE TO THE EXISTING MARK OWEN #1 WELL. THIS
LOCATION STAKE IS APPROX. 700 FEET SOUTHWEST
OF EXISTING WELL.



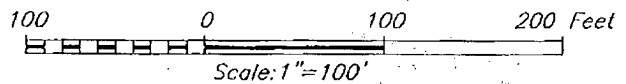
PROVIDING SURVEYING SERVICES
SINCE 1946

JOHN WEST SURVEYING COMPANY

412 N. DAL PASO

HOBBS, N.M. 88240

(575) 393-3117



APACHE CORPORATION

MARK OWEN #28 WELL
LOCATED 1310 FEET FROM THE SOUTH LINE
AND 467 FEET FROM THE WEST LINE OF SECTION 35,
TOWNSHIP 21 SOUTH, RANGE 37 EAST, N.M.P.M.,
LEA COUNTY, NEW MEXICO.

Survey Date: 12/22/10

Sheet 1 of 1 Sheets

W.O. Number: 10.11.1842

Dr By: DSS

Rev 1:

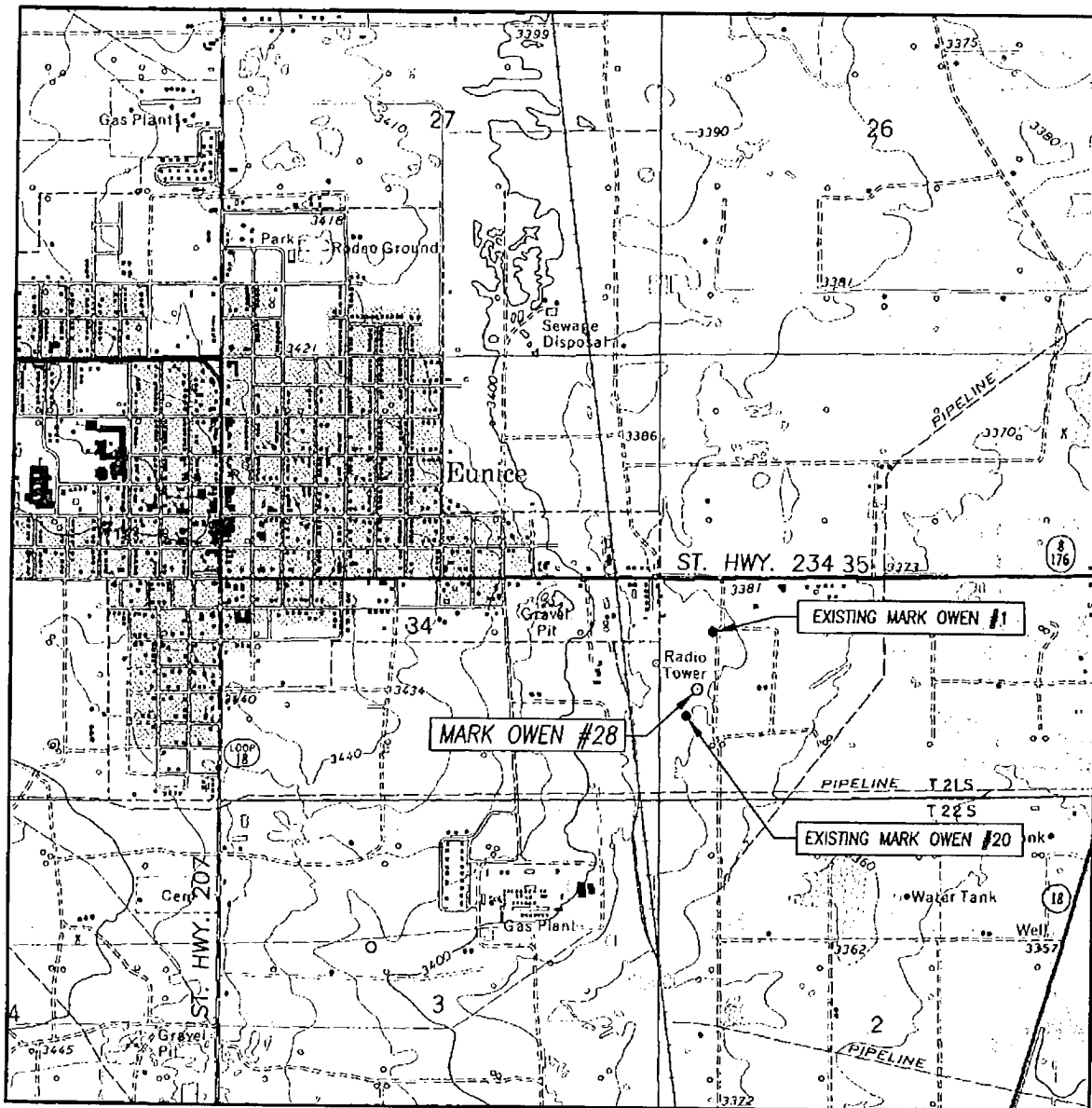
Date: 1/5/10

Disk:

10111842

Scale: 1"=100'

LOCATION VERIFICATION MAP



SCALE: 1" = 2000'

CONTOUR INTERVAL:
EUNICE, N.M. - 10'

SEC. 35 TWP. 21-S RGE. 37-E

SURVEY N.M.P.M.

COUNTY LEA STATE NEW MEXICO

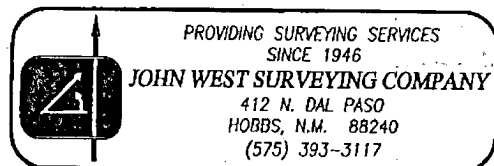
DESCRIPTION 1310' FSL & 467' FWL

ELEVATION 3381'

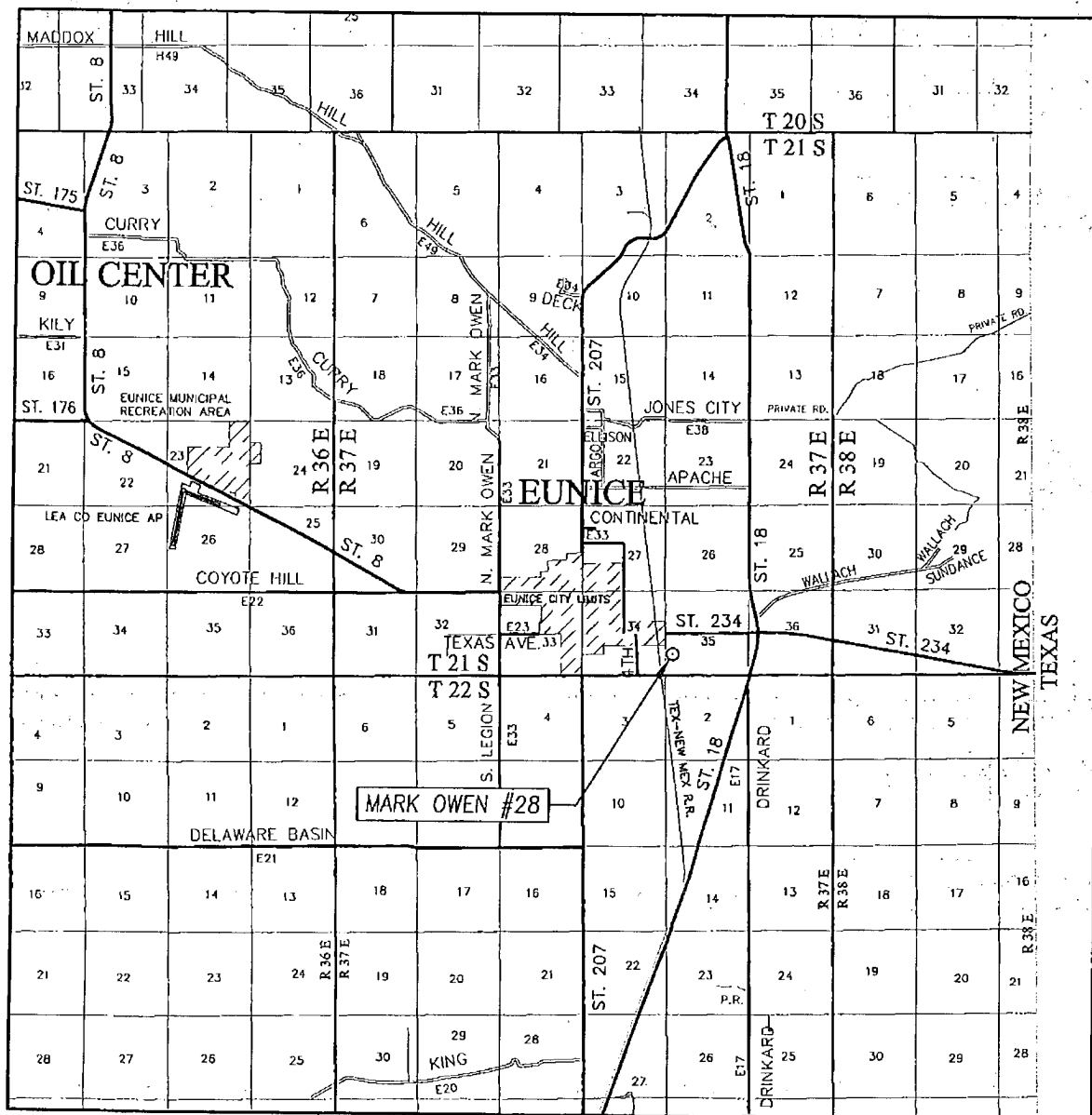
OPERATOR APACHE CORPORATION

LEASE MARK OWEN

U.S.G.S. TOPOGRAPHIC MAP
EUNICE, N.M.



VICINITY MAP



SCALE: 1" = 2 MILES

SEC. 35 TWP. 21-S RGE. 37-E
 SURVEY N.M.P.M.
 COUNTY LEA STATE NEW MEXICO
 DESCRIPTION 1310' FSL & 467' FWL
 ELEVATION 3381'
 OPERATOR APACHE CORPORATION
 LEASE MARK OWEN

