

RECEIVED

JW

DISTRICT I
1625 N. FRENCH DR., HOBBS, NM 88240

APR 21 2011

State of New Mexico
Energy, Minerals and Natural Resources Department

Form C-102

Revised October 12, 2005

Submit to Appropriate District Office

State Lease - 4 Copies

Pec Lease - 3 Copies

DISTRICT II
1301 W. GRAND AVENUE, ARTESIA, NM 88210

HOBBSOCD

OIL CONSERVATION DIVISION

11885 SOUTH ST. FRANCIS DR.
Santa Fe, New Mexico 87505

DISTRICT III
1000 RIO BRAZOS RD., AZTEC, NM 87410

DISTRICT IV
11885 S. ST. FRANCIS DR., SANTA FE, NM 87505

WELL LOCATION AND ACREAGE DEDICATION PLAT

☐ AMENDED REPORT

API Number 30-025-40117	Pool Code 19190	Pool Name DrinKard
Property Code 306607	Property Name MARK OWEN	Well Number 29
OGRID No. 873	Operator Name APACHE CORPORATION	Elevation 3574'

Surface Location

UL or lot No. K	Section 35	Township 21-S	Range 37-E	Lot Idn	Feet from the 2173	North/South line SOUTH	Feet from the 1330	East/West line WEST	County LEA
---------------------------	----------------------	-------------------------	----------------------	---------	------------------------------	----------------------------------	------------------------------	-------------------------------	----------------------

Bottom Hole Location If Different From Surface

UL or lot No.	Section	Township	Range	Lot Idn	Feet from the	North/South line	Feet from the	East/West line	County
Dedicated Acres 40	Joint or Infill	Consolidation Code	Order No. NSL-6348-A ; NSP-1935-B ; SD-200409-C						

NO ALLOWABLE WILL BE ASSIGNED TO THIS COMPLETION UNTIL ALL INTERESTS HAVE BEEN CONSOLIDATED
OR A NON-STANDARD UNIT HAS BEEN APPROVED BY THE DIVISION

	<p>GEODETIC COORDINATES NAD 27 NME</p> <p>Y=523656.6 N X=868946.4 E</p> <p>LAT.=32.433968° N LONG.=104.137534° W</p> <p>LAT.=32°26'02" N LONG.=103°08'15" W</p>	<p>OPERATOR CERTIFICATION</p> <p>I hereby certify that the information herein is true and complete to the best of my knowledge and belief, and that this organization either owns a working interest or unleased mineral interest in the land including the proposed bottom hole location or has a right to drill this well at this location pursuant to a contract with an owner of such mineral or working interest, or to a voluntary pooling agreement or a compulsory pooling order heretofore entered by the division.</p> <p><i>Sorina L. Flores</i> 4/19/11 Signature Date Sorina L. Flores Printed Name</p>
	<p>SURVEYOR CERTIFICATION</p> <p>I hereby certify that the well location shown on this plat was plotted from field notes of actual surveys made by me or under my supervision, and that the same is true and correct to the best of my belief.</p> <p>DECEMBER 22, 2010</p> <p>Date Surveyed DSS</p> <p>Signature & Seal of Professional Surveyor <i>Small E. Eidson</i> 01/07/2011 NEW MEXICO 10.11.1843</p>	
	<p>Certificate No. GARY O. EIDSON 12841 PROFESSIONAL SURVEYOR EIDSON 3239</p>	

APR 21 2011

RECEIVED

APR 21 2011

State of New Mexico

Energy, Minerals and Natural Resources Department

Form C-102

Revised October 12, 2005

Submit to Appropriate District Office

State Lease - 4 Copies

Pool Lease - 3 Copies

DISTRICT I

1625 N. FRENCH DR., HOBBS, NM 88240

HOBBSDCD

DISTRICT II

1301 W. GRAND AVENUE, ARTESIA, NM 88210

OIL CONSERVATION DIVISION

11885 SOUTH ST. FRANCIS DR.

Santa Fe, New Mexico 87505

DISTRICT III

1000 RIO BRAZOS RD., AZTEC, NM 87410

DISTRICT IV

11885 S. ST. FRANCIS DR., SANTA FE, NM 87505

WELL LOCATION AND ACREAGE DEDICATION PLAT

☐ AMENDED REPORT

API Number 30-025-40117	Pool Code 6660	Pool Name Blinebry Oil and Gas (oil)
Property Code 306607	Property Name MARK OWEN	Well Number 29
OGRID No. 873	Operator Name APACHE CORPORATION	Elevation 3574'

Surface Location

UL or lot No.	Section	Township	Range	Lot Ida	Feet from the	North/South line	Feet from the	East/West line	County
K	35	21-S	37-E		2173	SOUTH	1330	WEST	LEA

Bottom Hole Location If Different From Surface

UL or lot No.	Section	Township	Range	Lot Ida	Feet from the	North/South line	Feet from the	East/West line	County
Dedicated Acres 40	Joint or Infill	Consolidation Code	Order No. NSL-6348-A ; NSP-1935-B ; SD-200409-C						

NO ALLOWABLE WILL BE ASSIGNED TO THIS COMPLETION UNTIL ALL INTERESTS HAVE BEEN CONSOLIDATED
OR A NON-STANDARD UNIT HAS BEEN APPROVED BY THE DIVISION

	<p>GEODETIC COORDINATES NAD 27 NME</p> <p>Y=523656.6 N X=868946.4 E</p> <p>LAT.=32.433968° N LONG.=104.137534° W</p> <p>LAT.=32°26'02" N LONG.=103°08'15" W</p>	<p>OPERATOR CERTIFICATION</p> <p>I hereby certify that the information herein is true and complete to the best of my knowledge and belief, and that this organization either owns a working interest or unleased mineral interest in the land including the proposed bottom hole location or has a right to drill this well at this location pursuant to a contract with an owner of such mineral or working interest, or to a voluntary pooling agreement or a compulsory pooling order heretofore entered by the division.</p> <p><i>Sorina L. Flores</i> 4/19/11 Signature Date</p> <p>Sorina L. Flores Printed Name</p>
		<p>SURVEYOR CERTIFICATION</p> <p>I hereby certify that the well location shown on this plat was plotted from field notes of actual surveys made by me or under my supervision, and that the same is true and correct to the best of my belief.</p> <p>DECEMBER 22, 2010</p> <p>Date Surveyed DSS</p> <p>Signature of Professional Surveyor <i>Ronald J. Eidson</i> 01/07/2011 Professional Surveyor No. 117843</p> <p>Certificate No. GARY O. EIDSON 12841 RONALD J. EIDSON 3239</p>

APR 21 2011

RECEIVED

APR 21 2011

DISTRICT I
1625 N. FRENCH DR., HOBBS, NM 88240

HOBBSOCO

State of New Mexico
Energy, Minerals and Natural Resources Department

DISTRICT II
1301 W. GRAND AVENUE, ARTESIA, NM 88210

OIL CONSERVATION DIVISION
11885 SOUTH ST. FRANCIS DR.
Santa Fe, New Mexico 87505

DISTRICT III
1000 RIO BRAZOS RD., AZTEC, NM 87410

DISTRICT IV
11885 S. ST. FRANCIS DR., SANTA FE, NM 87505

Form C-102

Revised October 12, 2005
Submit to Appropriate District Office
State Lease - 4 Copies
Fee Lease - 3 Copies

WELL LOCATION AND ACREAGE DEDICATION PLAT

☐ AMENDED REPORT

API Number 30-025-40117	Pool Code 86440	Pool Name Tubb Oil and Gas (Pro Gas)
Property Code 306607	Property Name MARK OWEN	Well Number 29
OGRID No. 873	Operator Name APACHE CORPORATION	Elevation 3574'

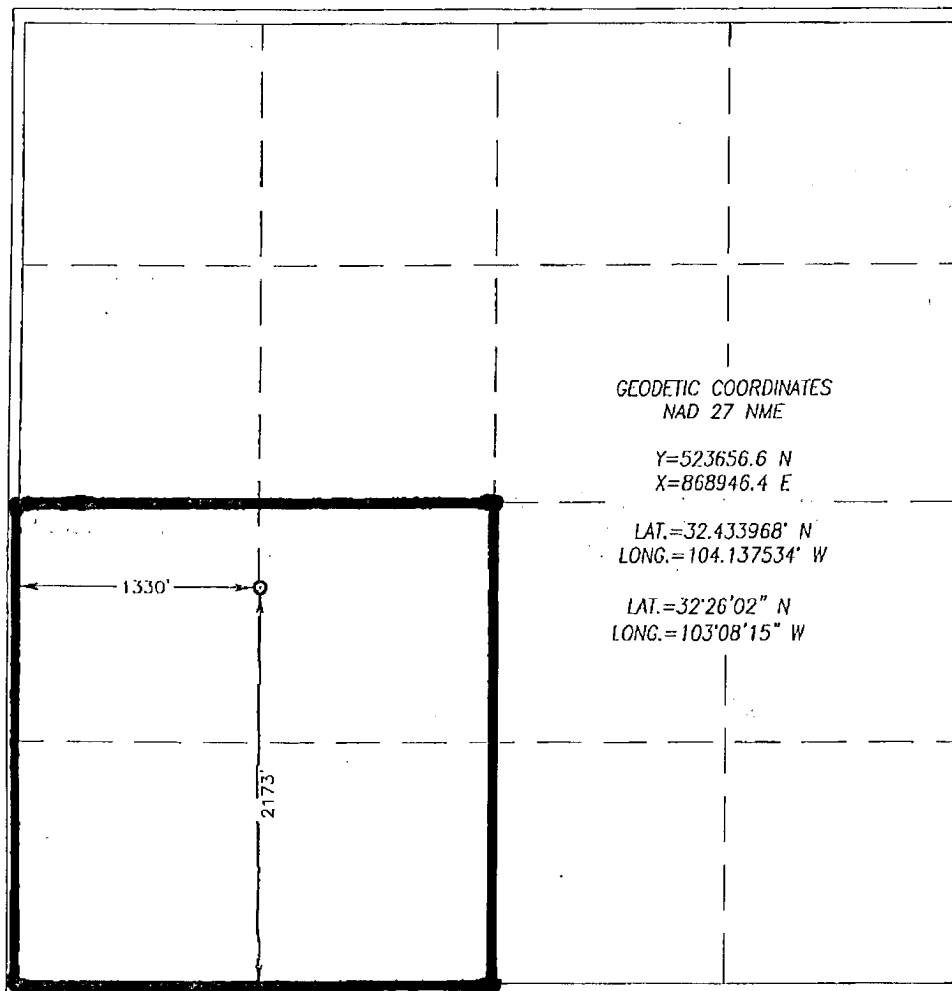
Surface Location

UL or lot No. K	Section 35	Township 21-S	Range 37-E	Lot Idn	Feet from the 2173	North/South line SOUTH	Feet from the 1330	East/West line WEST	County LEA
---------------------------	----------------------	-------------------------	----------------------	---------	------------------------------	----------------------------------	------------------------------	-------------------------------	----------------------

Bottom Hole Location If Different From Surface

UL or lot No.	Section	Township	Range	Lot Idn	Feet from the	North/South line	Feet from the	East/West line	County
Dedicated Acres 160	Joint or Infill	Consolidation Code	Order No. NSL-6348-A; NSP-1935-B; SD-200409-C						

NO ALLOWABLE WELL BE ASSIGNED TO THIS COMPLETION UNTIL ALL INTERESTS HAVE BEEN CONSOLIDATED
OR A NON-STANDARD UNIT HAS BEEN APPROVED BY THE DIVISION



OPERATOR CERTIFICATION

I hereby certify that the information herein is true and complete to the best of my knowledge and belief, and that this organization either owns a working interest or unleased mineral interest in the land including the proposed bottom hole location or has a right to drill this well at this location pursuant to a contract with an owner of such mineral or working interest, or to a voluntary pooling agreement or a compulsory pooling order heretofore entered by the division.

Sorina L. Flores 4/19/11
Signature Date
Sorina L. Flores
Printed Name

SURVEYOR CERTIFICATION

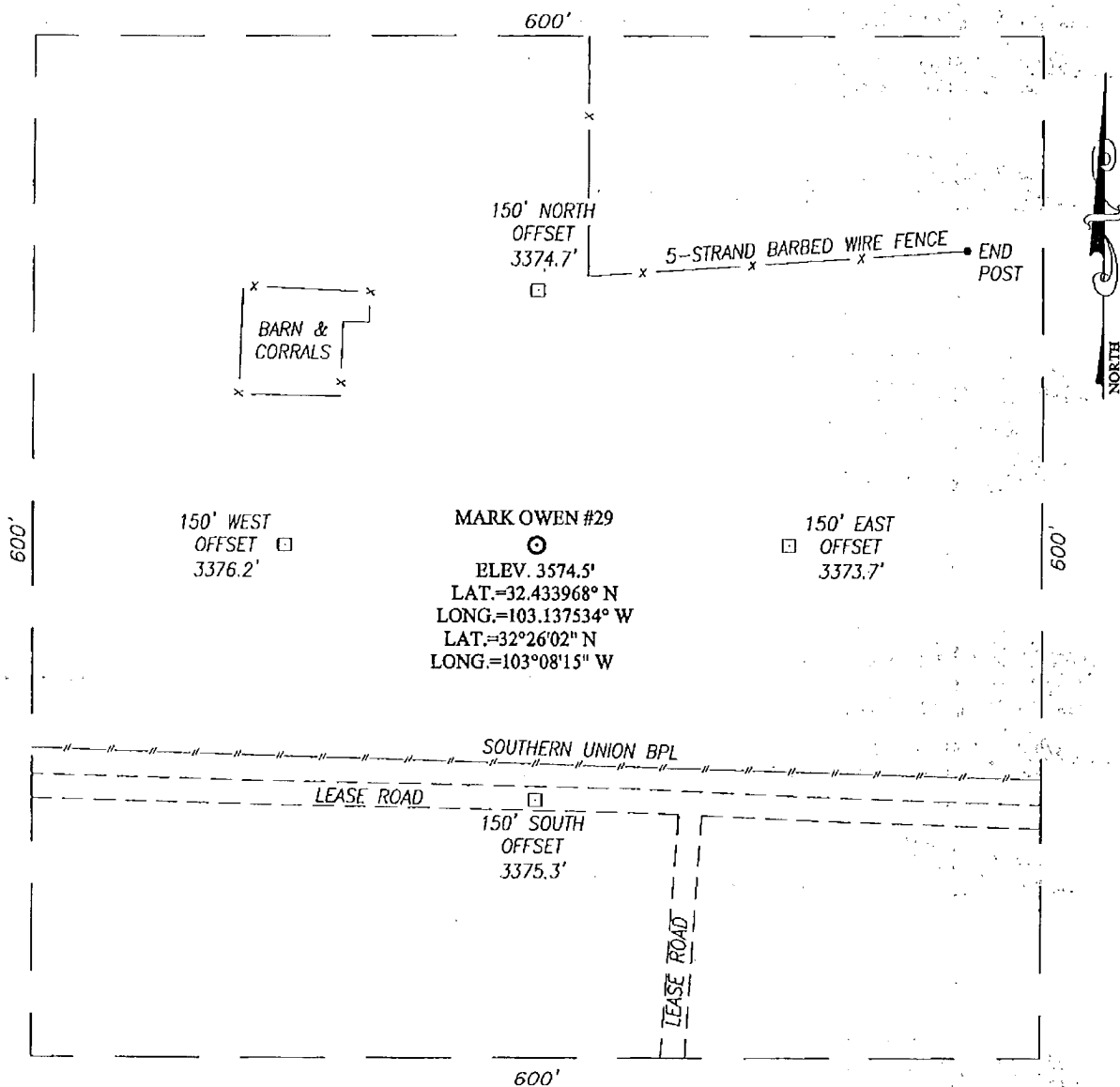
I hereby certify that the well location shown on this plat was plotted from field notes of actual surveys made by me or under my supervision, and that the same is true and correct to the best of my belief.

DECEMBER 22, 2010

Date Surveyed	DSS
Signature of Professional Surveyor	
<i>Gary O. Eidson</i> 01/07/2011	
Certificate No. GARY O. EIDSON 12641	NON-MEASUREMENT EIDSON 3239

APR 21 2011

SECTION 35, TOWNSHIP 21 SOUTH, RANGE 37 EAST, N.M.P.M.,
LEA COUNTY, NEW MEXICO

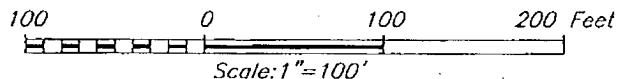


DIRECTIONS TO LOCATION

FROM THE ST. HWY. #18 AND ST. HWY. #234
(TEXAS RD.), GO WEST ON ST. HWY. #234 APPROX.
1.0 MILE. TURN LEFT AND GO SOUTH APPROX. 0.1
MILE. TURN LEFT AND GO EAST APPROX. 0.1 MILE.
THIS LOCATION STAKE IS APPROX. 145 FEET NORTH
OF LEASE ROAD.



PROVIDING SURVEYING SERVICES
SINCE 1946
JOHN WEST SURVEYING COMPANY
412 N. DAL PASO
HOBBS, N.M. 88240
(575) 393-3117

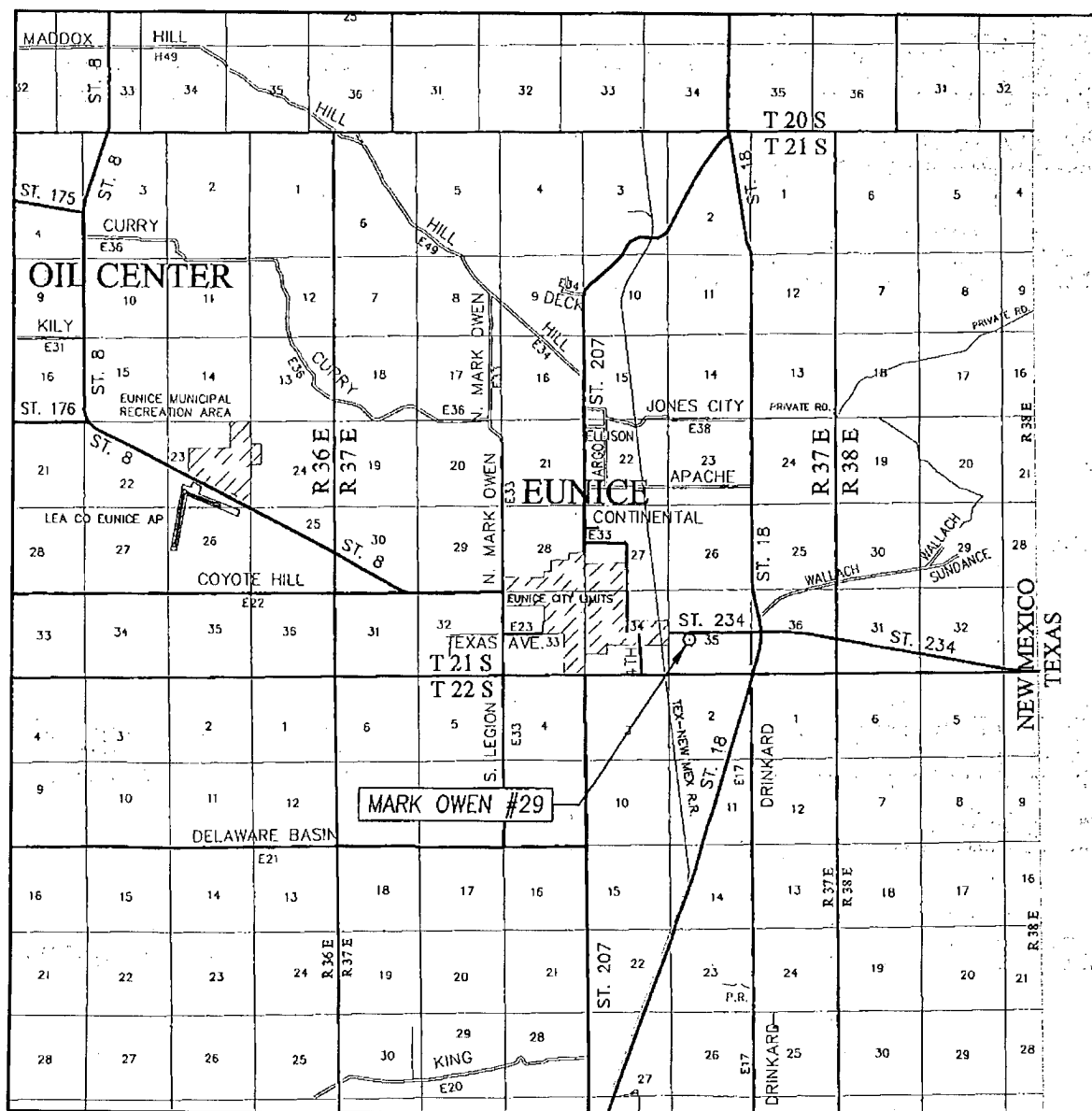


APACHE CORPORATION

MARK OWEN #29 WELL
LOCATED 2173 FEET FROM THE SOUTH LINE
AND 1330 FEET FROM THE WEST LINE OF SECTION 35,
TOWNSHIP 21 SOUTH, RANGE 37 EAST, N.M.P.M.,
LEA COUNTY, NEW MEXICO.

Survey Date: 12/22/10	Sheet 1 of 1 Sheets
W.O. Number: 10.11.1843	Dr By: DSS
Date: 1/5/10	Rev 1:
Disk:	10111843
Scale: 1"=100'	

VICINITY MAP



SCALE: 1" = 2 MILES

SEC. 35 TWP. 21-S RGE. 37-E

SURVEY N.M.P.M.

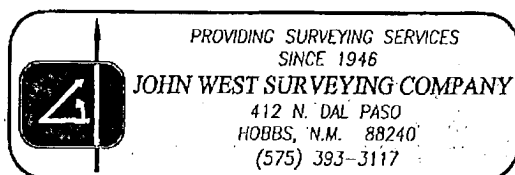
COUNTY LEA STATE NEW MEXICO

DESCRIPTION 2173' FSL & 1330' FWL

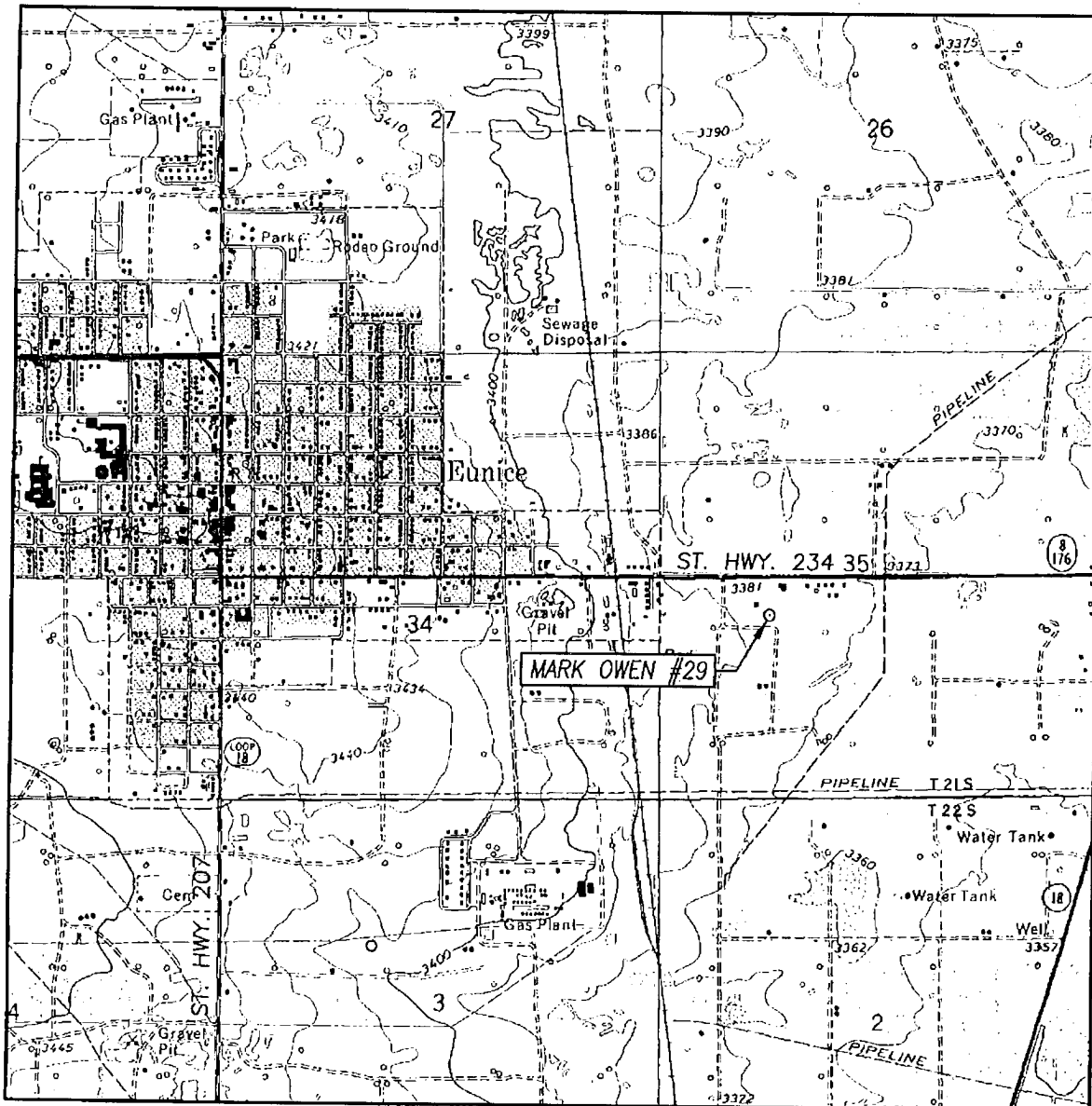
ELEVATION 3574'

OPERATOR APACHE CORPORATION

LEASE MARK OWEN



LOCATION VERIFICATION MAP



SCALE: 1" = 2000'

CONTOUR INTERVAL:
EUNICE, N.M. - 10'

SEC. 35 TWP. 21-S RGE. 37-E

SURVEY N.M.P.M.

COUNTY LEA STATE NEW MEXICO

DESCRIPTION 2173' FSL & 1330' FWL

ELEVATION 3574'

OPERATOR APACHE CORPORATION

LEASE MARK OWEN

U.S.G.S. TOPOGRAPHIC MAP
EUNICE, N.M.

